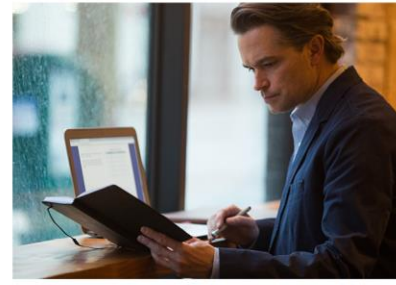


Community Benefits & Impacts Advisory Group

CBI: Economic Impact, CBRE

Seventh CBIAG Meeting

April 20, 2023



CBI: Economic Impact, Community Based Renewable Energy + Development

April 20, 2023, 1-4 p.m. PT

For a Better Meeting Experience



Spanish or ASL?

- Navigate to "Interpretation" at the bottom of Zoom
- Select "ASL" under Watch or "Spanish" under Audio
- If the interpretation icon is missing, try the "More" icon



Use Gallery View (icon at top right) when in group discussion



For technical support, chat "Tag G-D / E Source" as recipient, and send your message



- Questions are welcome at any time
- Please mute until speaking
- Speak by clicking the "Raise Hand" in the tool bar

Agenda

TIMING	TOPIC
1 p.m.	Land Acknowledgement Presenters, purpose & objectives Check In
1:15 p.m.	Closing the Loop from Last Meeting
1:30 p.m.	Clean Energy Plan Update
2:00 p.m.	CBI: Economic Impact
2:30 p.m.	Break
2:45 p.m.	Community Based Renewable Energy + Development
3:30 p.m.	DSP Updates
3:45 p.m.	Public Comment
3:50 p.m.	Summary and Next Steps

Land Acknowledgement

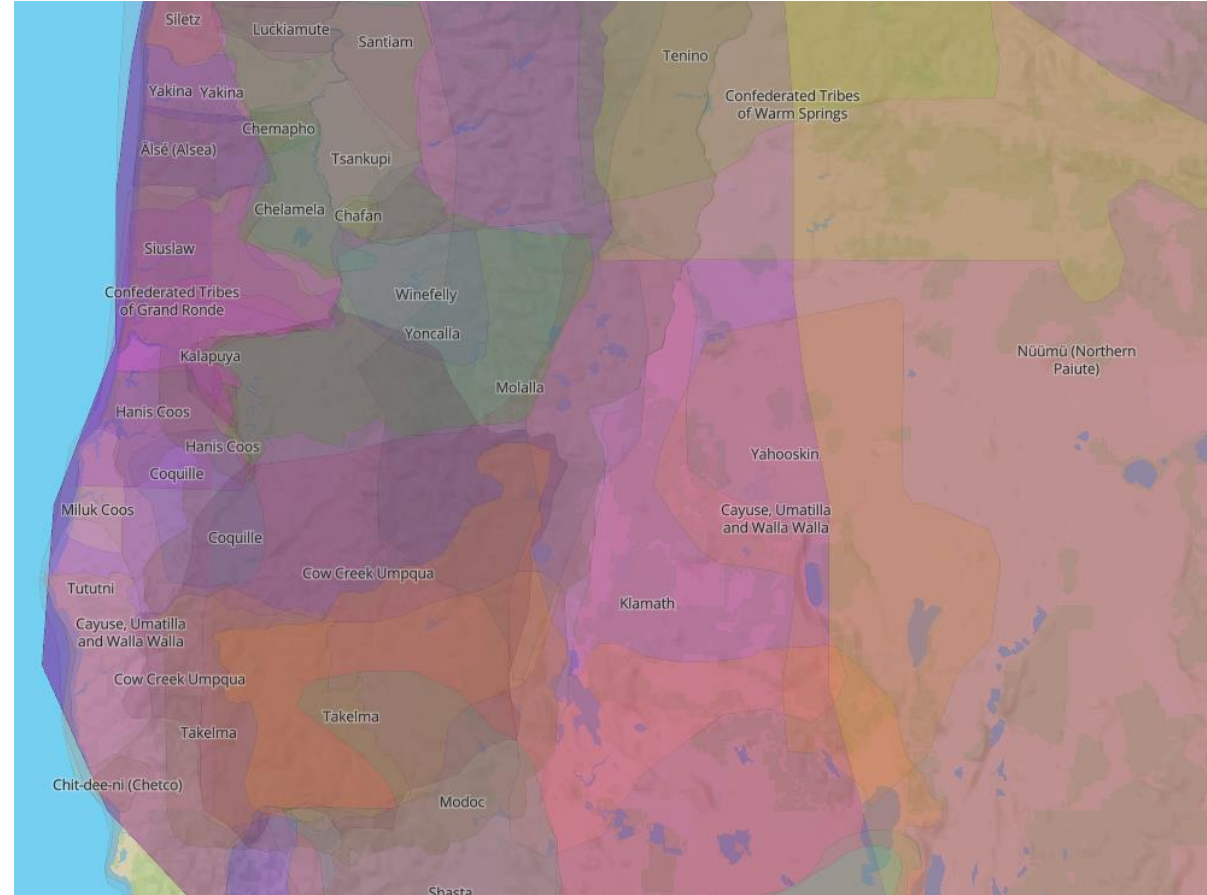
We are meeting online from various locations within the United States.

To learn about the original stewards of the land where you are now, this is a wonderful resource:



Native Land Digital

<https://native-land.ca>



By acknowledging Indigenous peoples and tribes, their traditional homeland ties are renewed and reaffirmed.

PacifiCorp Presenters



Stephanie Meeks
Regulatory Manager



Ryan Harvey
Community Renewables
Program Manager



Christina Medina
PacifiCorp Manager,
Stakeholder Policy &
Engagement



Lee Elder
PacifiCorp Load
Forecasting Manager



Ian Hoogendam
Distribution
System Planning
Manager



Lisa Markus
E Source Managing Director
& Facilitator



Jeff Brown
Hydro South
Director

Shauna Thomas
PacifiCorp
T & D Program
Specialist

RDI Strengthens Rural People, Places, & Economies in the Pacific Northwest

A Private Nonprofit Serving Rural:

- Oregon
- Washington
- Idaho
- Northern California

www.rdiinc.org

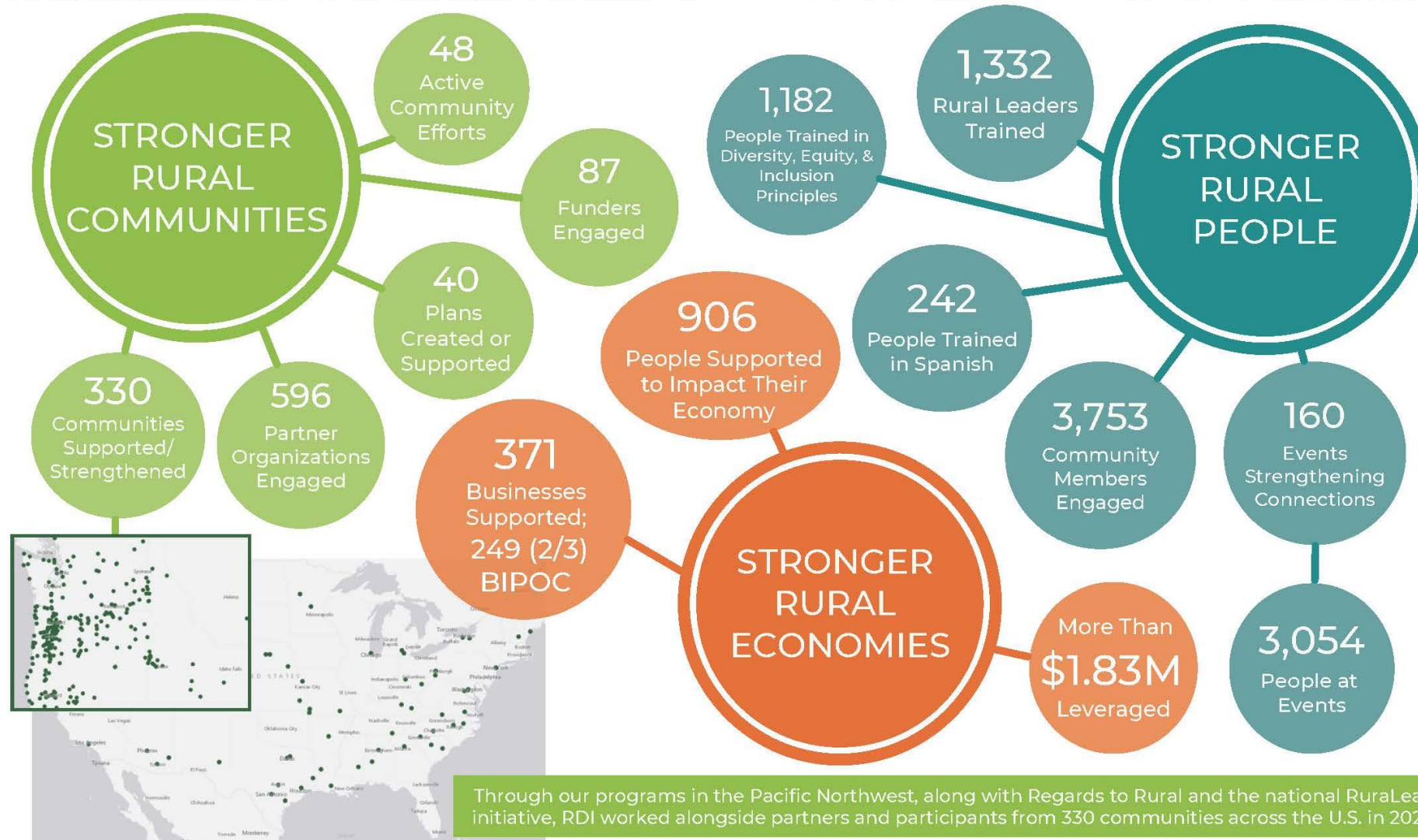


What We Do



- Develop Networks of Rural Leaders
- Revitalize Rural Economies
- Elevate Rural Voices and Priorities
- Improve Access to Resources

RURAL DEVELOPMENT INITIATIVES 2022 IMPACT REPORT



Let's Talk Rural

- Resourceful
- Resilient
- Capacity-poor
- Diverse
- Isolated
- Relationship-rich



Community Benefits & Impacts Advisory Group (CBIAG) Purpose

Focus on equity and a clean energy future in Oregon in accordance with [HB 2021](#)

Today's Objectives

1. Continue to create shared understanding of Community Benefit Indicators: Economic Impacts
2. Explore Community Based Renewable Energy + Development
3. Updates on Clean Energy Plan filing
4. Distribution System Planning Updates

What areas of economic improvement
would you like to see in your
community?

Reflecting on the March 16 Meeting

Five CBIAG members representing four organizations participated online

CBIAG Attendees	
Alma Pinto	Community Energy Project
Sherrie Villmark	Community Energy Project
Xitlali Torres	Klamath and Lake Community Action Services
Tim Lynch	Multnomah County
Drew Farmer	Oregon Coast Community Action

Our goals:

1. Continue to create shared understanding of Community Benefit Indicators: Environmental Impact
2. Engage you on utility and individual actions to creating a clean energy future
3. Reengage you on charter development

Main themes:

- Excitement about having access to a PacifiCorp feedback aggregation tool.
- Is energy efficiency factored into the Environmental Impact CBI?
- How do the CBIs make a difference at the community level?
- Can PacifiCorp use Zoom across stakeholder venues to increase accessibility?

Clean Energy Plan Update

CEP Update

Clean Energy Plan (CEP) filing extension:

- Timing: May 2023 with a possible addendum of the PacifiCorp's 2023 Integrated Resource Plan (IRP) recognizing one filing influences the other
- Purpose: gather additional stakeholder feedback and address challenges
 - Multi-state system
 - Load growth in Oregon
 - 10% requirement for small-scale renewable that equals ~800MWs

Providing your feedback:

Clean Energy Plan Engagement Series 2nd Meeting

**Friday, April 28, 2023, from
1:00 PM - 4:00 PM (PST)**

Delivers expanded learning opportunities and fostering deeper understanding of the complex challenges

Virtual and Recorded

Agenda for this second session include:

- Preview to PacifiCorp's Clean Energy Plan to open discussions on the compliance pathways to 100% zero emission by 2040
- Overview of the additional elements in the plan regarding community benefit indicators, resiliency, community based renewable energy, and stakeholder engagement

CBI: Economic Impacts

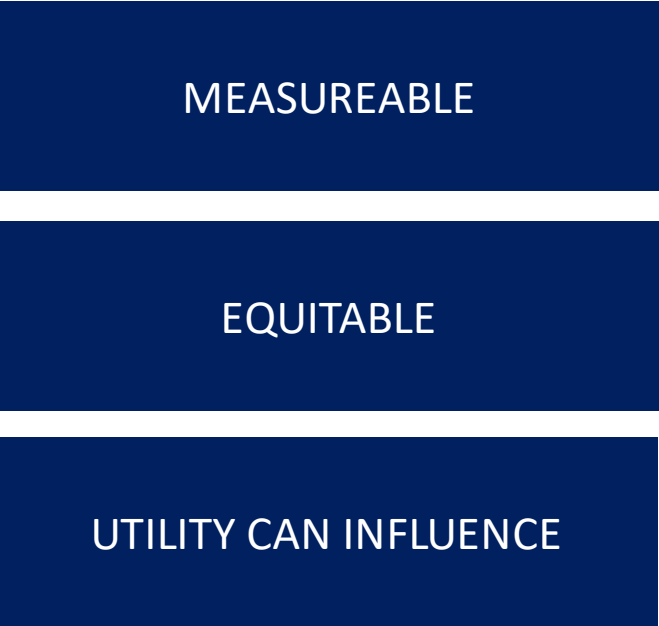
PacifiCorp needs to name a CBI in these five following topic areas:

Energy Equity	Resiliency	Health & Community Well-Being	Environmental Impacts	Economic Impacts
Proposed CBIs				
Energy Burden # Households	Outages + Duration	Disconnections	Renewable Energy + Emission Reduction	Community-focused Efforts and Investments

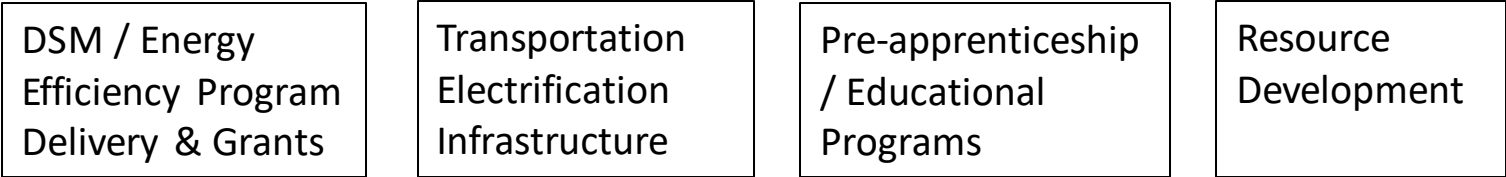
Economic Impacts

Economic Impacts: Economic impacts begin when an organization spends money. This creates ripple effects in the economy through the spending of local businesses in the supply chain and the household spending of people earning income from those businesses.

CBI Qualities



Community-focused efforts and investments:



Potential Economic Impact CBI: Increase Community-focused Efforts

Demand-side Management (DSM) / Energy Efficiency / Program Delivery & Grants

Potential Metric: Headcount of women, minority and disabled staff supporting DSM program delivery in Oregon by census tract

Background: PacifiCorp planning work with the Energy Trust of Oregon (ETO) to document the headcount of DSM program delivery throughout Oregon. Of note, DSM program delivery relies on implementers within communities to install energy efficiency measures

Potential Metric:

- Number of workshops related to energy program delivery in Oregon by community
- Grants to Community Based Organizations for Energy Efficiency outreach

Background: As part of DSM program delivery, ETO conducts vendor training programs and provides grants to CBOs to conduct energy outreach activities within their service area.

Potential Economic Impact CBI: Increase Community-focused Efforts

Electric Vehicle Infrastructure

Potential Metric: Public charging stations or ports in Oregon service area supported by PacifiCorp.

Background: Over the last four years, PacifiCorp has supported transportation electrification projects through an electric mobility grant program which has awarded more than \$4.5 million to communities to enable innovative clean transportation projects. This support continues to grow through rebate programs, energy provider-owned programs and more.

Pre-apprenticeship/ Educational Programs

Potential Metric: Number of participants in pre-apprenticeship/educational programs by community

Background: PacifiCorp's apprenticeship programs include:

- Sea Grant/PacifiCorp partnership for supporting K-12 education and local community college training
- STEAM and STEM program support

Potential Economic Impact CBI: Increase Community-focused Efforts

Resource Development

Potential Metric: Number of local and state workers employed during resource construction and/or total spend provided by a diversity business

Background: Workforce reporting is required for PacifiCorp contracted and owned resources acquired through the regulated 2022 RFP in all states. This is a new process and data is currently being collected by the Company

Regarding workforce data, reporting details the following for each energy supply facility contracted through the 2022 RFP and built in Oregon:

- The number of local and state workers employed during construction of the facility
- Diverse business expenditures report. Diversity spend is the portion of the total spend provided by a diversity business including women, minority, disabled and veteran-owned business suppliers and contractors. Does not include lease, real estate and utility spend figures

Is there anything else we
should consider?

Break

Community-Based Renewable Energy

What is Community-Based Renewable Energy (CBRE)?

Allows community ownership of a renewable energy source that promotes climate resiliency and broader benefits. In Oregon, CBREs have three components:

RENEWABLE ENERGY RESOURCE(S)



- Solar, wind, or other renewable energy
- Microgrids, storage systems
- Demand response

CONNECTS TO THE GRID



Interconnects to power company distribution or transmission assets

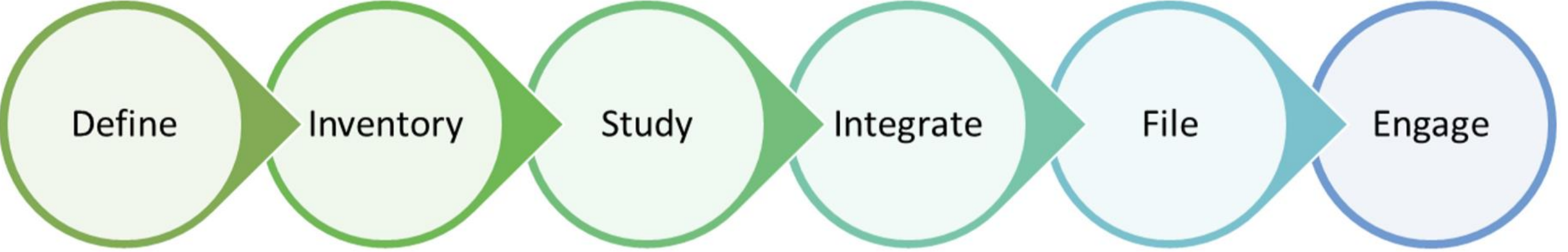
BENEFITS OR OWNED BY THE COMMUNITY



- Includes Community benefits agreements, ownership, or other form of direct benefit
- Benefits may include increased local resilience, community stability, local jobs or economic development

Source: HB 2021 Legislation

CBRE Development Plan



CBRE Requirements
in CEP: Outline requirements, interdependencies and sequence

Inventory of current programs
and projects and how they align with the CBRE requirements

CBRE “Potential Study”
Develop initial view of potential CBRE impact within Service Area

CBREs in the IRP Process:
Work with IRP modeling team to incorporate a “CBRE Portfolio” into the IRP model to meet the requirements to “model offsetting fossil fuels with CBREs”

Prepare CEP filing with interim CBRE Potential Study and Proposed Next Steps/Action Plan

CBRE Content in CEP Engagement Series: Actively engage with CBIAG, Tribal and CEP Stakeholders on CBRE opportunities, approaches, potential measurements, etc. and update the Initial CBRE Action Plan as appropriate.

Inventory Informs “Potential Study”

DRAFT FOR DISCUSSION ONLY

1) **Group 1:** Total ~ 92 MW

- a) Community Solar: Customers participate in offsite solar for a monthly bill reduction. Total 65 MW.
- b) Blue Sky Program: Long-running voluntary renewables add-on. Total 4.3 MW
- c) Energy Trust-Identified Opportunities: Small hydro + Community-focused solar. Total ~ 23 MW

2) **Group 2 - Small Scale, Community-Based Solar + Storage projects:** Total ~ 3.5 MW

- a. Based on experience from the PacifiCorp’s Community Battery Storage Pilot program and OR Dept. Of Energy Community Renewable Energy Project grant funding requests.
- b. This portion of the potential reflects the possibility for small-scale, community-based solar + storage opportunities.
- c. These may include opportunities like “resilience hubs”, small solar connected micro-grids or other community-focused renewable opportunities.

Inventory Informs “Potential Study”

DRAFT FOR DISCUSSION ONLY

1) **Group 1:** Total ~ 92 MW

- a) Community Solar: Customers participate in offsite solar for a monthly bill reduction. Total 65 MW.
- b) Blue Sky Program: Long-running voluntary renewables add-on. Total 4.3 MW
- c) Energy Trust-Identified Opportunities: Small hydro + Community-focused solar. Total ~ 23 MW

2) **Group 2 - Small Scale, Community-Based Solar + Storage projects:** Total ~ 3.5 MW

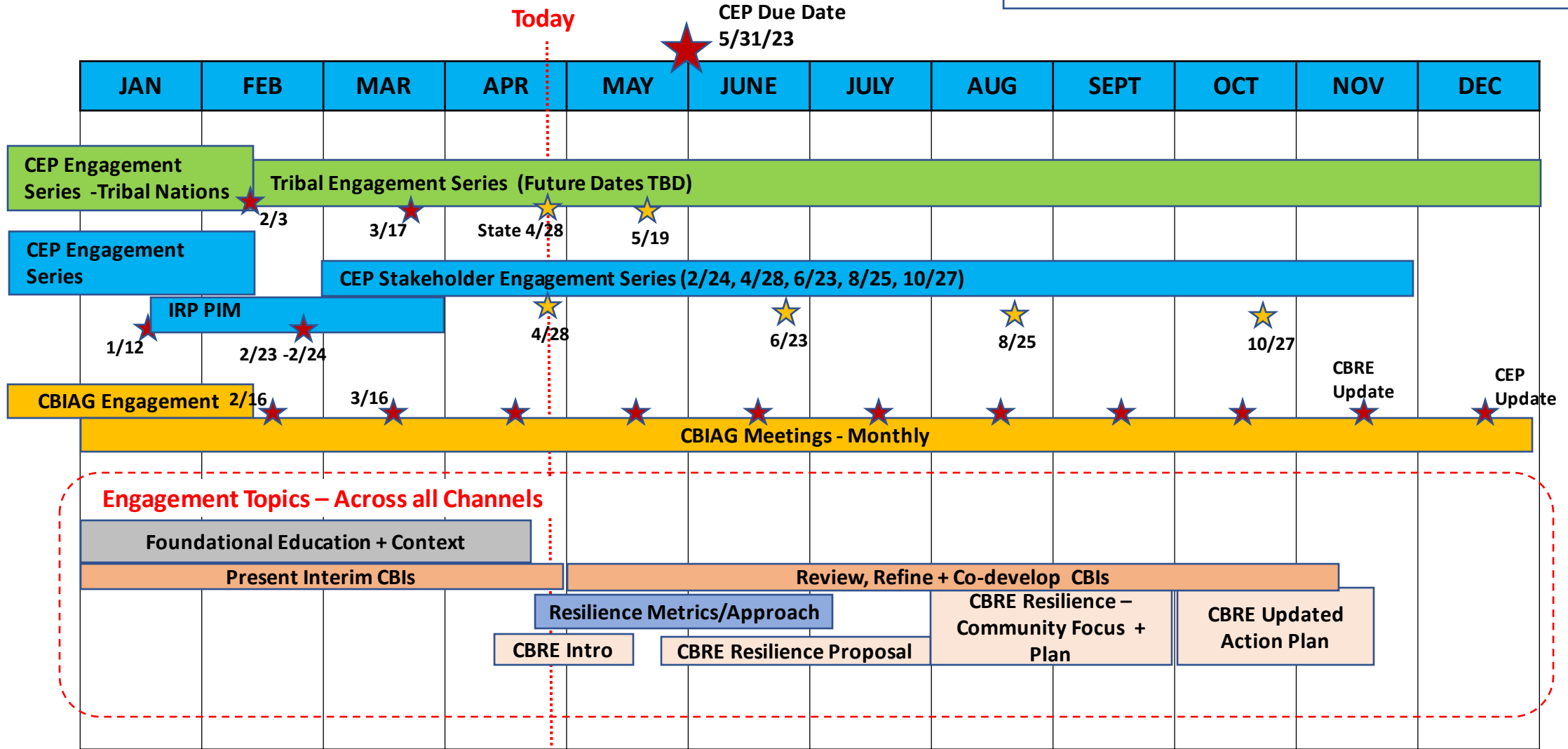
- a. Based on experience from the PacifiCorp’s Community Battery Storage Pilot program and OR Dept. Of Energy Community Renewable Energy Project grant funding requests.
- b. This portion of the potential reflects the possibility for small-scale, community-based solar + storage opportunities.
- c. These may include opportunities like “resilience hubs”, small solar connected micro-grids or other community-focused renewable opportunities.

CBRE Next Steps

- Continue to refine the Initial CBRE “Potential Study”.
- Work with IRP Modeling team to complete CBRE Portfolio in IRP model to highlight potential costs/benefits and “(d) Examine the costs and opportunities of offsetting energy generated from fossil fuels with community-based renewable energy.”
- Provide introduction to CBREs, outline plan and timeline for stakeholder input and capture any initial feedback on CBRE approach.
- Prepare and file the Initial CEP on May 31, 2023.
- Prepare initial CBRE Action Plan items including key discussion topics for soliciting community and stakeholder input for next CEP Engagement meetings.
- Actively engage with Stakeholders throughout the CEP Engagement series to gather input on CBRE opportunities, approaches, potential measurements, etc. and update the Initial CBRE Action Plan as appropriate.

CEP Engagement Calendar

DRAFT FOR DISCUSSION ONLY



Questions & Comments

Is there anything else
we should consider?

DSP Update

Distribution System Planning (DSP) Workshop Update

Modern DSP requires engaging with local communities to collaborate on solutions for identified grid needs.

2023 Study Areas:

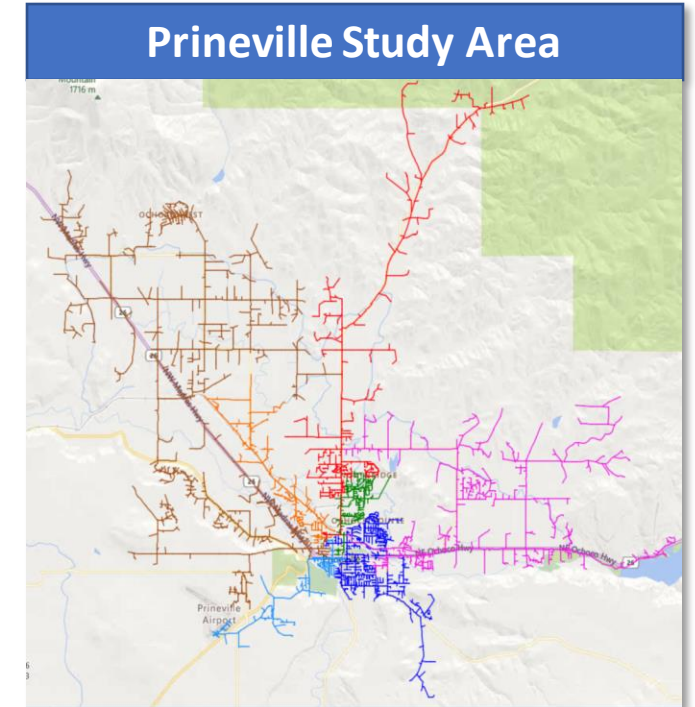
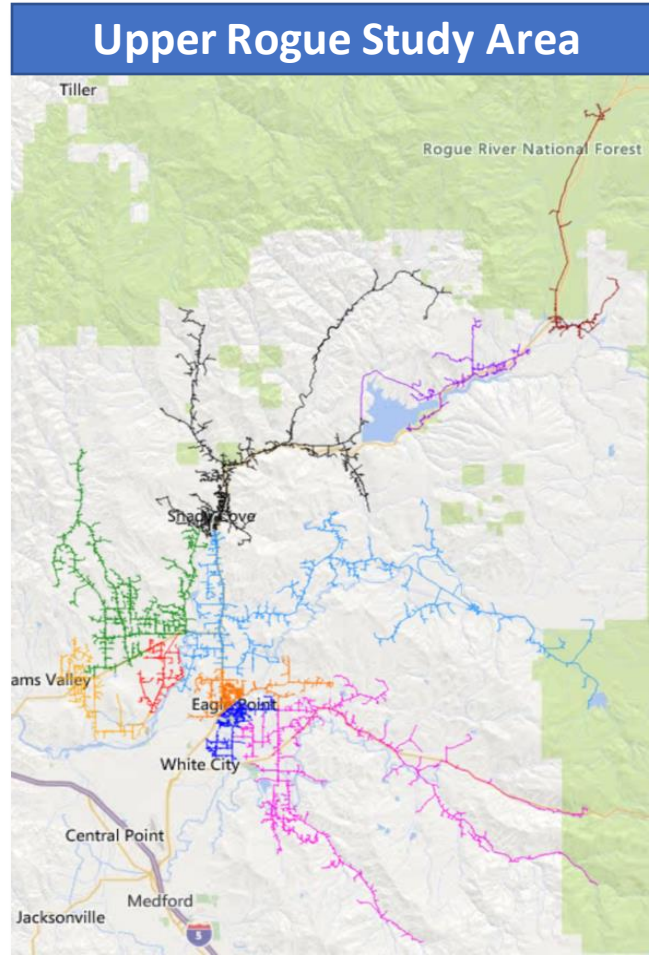
- Prineville
- Medford (Upper Rogue)

Local engagement series was held:

- Prineville - April 17
- Medford - April 19

Agenda:

- Utility Overview
- DSP Planning Overview
- DSP Study Area Selection Process
- Load Forecasting
- DSP Engagement
- Wrap Up Open Discussion



Public Comment

Check Out

What was your biggest takeaway from today's conversation?

CBIAG Calendar

May 18 (online)

[Oregon Community Benefits and Impacts Advisory Group](#)

June 15 (hybrid)

2316 South Sixth St., Suite C
Klamath Falls, OR 97601



July 15 (online)

[Oregon Community Benefits and Impacts Advisory Group](#)

PacifiCorp Stakeholder Engagement

Clean Energy Plan Engagement Series

- June 28

Tribal Engagement Series

- May 19

For more information:

[Oregon Clean Energy Plan Updated Engagement Strategy](#)

Email comments to:

ORCBIAG@pacificorp.com

Appendix

Requirements HB 2021 and UM 2225

Utilities are required to:“(d) Examine the **costs** and **opportunities** of offsetting energy generated from fossil fuels with community-based renewable energy”

Source: HB 2021 Section 4.4(d)



Community Lens Acquisition Targets

The First CEP should include:

- A potential study that identifies opportunities for community-based renewable energy projects (CBREs) developed in coordination with communities ... with input from stakeholders and Staff.
The potential study should... identify acquisition targets (annual MW/MWh)... balance costs, risks and community impacts (using CBIs)... include action plan...
- Explanation of how utility’s plan for future CBREs complies with the state's goal for community-based renewable energy projects provided in ORS 469A.210 and explain how the CBRE targets align with this strategy



Opportunities Considered within Community Lens Potential Studies

Opportunities for CBRE actions, including distributed resources and their resiliency benefits, should be developed in coordination with communities that are served by the utility, including environmental justice communities, and with input from stakeholders and Staff. (Need to reference other processes)



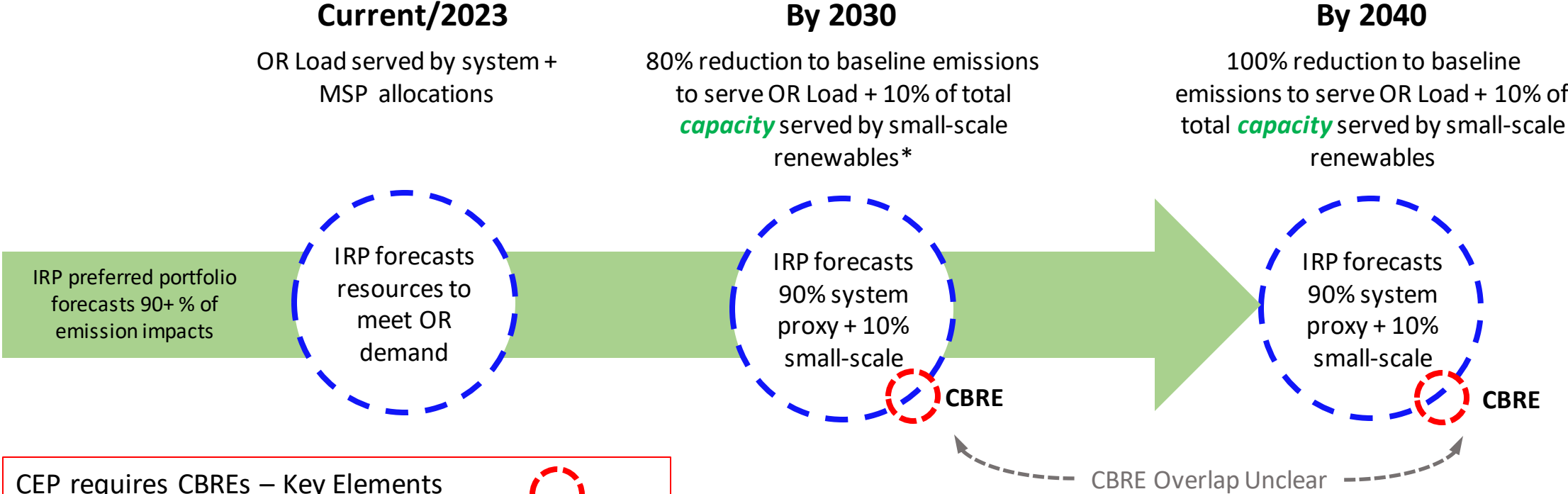
Off-setting Fossil Fuels with CBREs

For the first CEP

- The utility should incorporate the CBRE acquisition targets into IRP portfolio modeling...
- If system-wide benefits exist for a potential CBRE, the utility should quantify those benefits in a manner consistent with the IRP when evaluating the opportunity for inclusion in the first CEP.


Key Guidelines from UM 2225 for CBREs (Community Lens section of CEP proceedings - Order 22-390)

Community Based Renewable Energy in context of CEP



CEP requires CBREs – Key Elements

- No regulatory/legal targets
- “Potential Study” in CEP #1, Explain how CBREs might be used to offset fossil fuel use
- Focus - Community participation, resilience, equity
- Open ended definitions – Utility to develop approach with input from communities/stakeholders

 **CBRE**

* Small-scale renewables must be RPS eligible

Inventory of Potential CBRE Projects

CBRE Programs/Channels (Existing or New)	Existing/Operational	Future Potential
Community Solar Program (Existing Company Program)	Two operational projects (~ 0.5 MW capacity)	51 identified opportunities - 65 MW Total
Blue Sky Program (Existing Company Program)	128 projects over past 16 yrs. (10.7 MW total capacity)	4.3 MW Total
Energy Trust of Oregon (ETO)-Identified Opportunities	ETO delivers all energy efficiency programs for PacifiCorp in Oregon and provides technical and financial assistance to development of renewable projects.	Small irrigation: – 17 MW Total Small, community-focused solar: 5.6 MW Total
Community Resiliency Battery Storage Pilot (Company Pilot started in 2018)	20 communities expressed interest, 10 completed technical assessments, 2 project grants approved. Zero installed MW.	Potential is included in “Group 2” of CBRE Potential Study
ODOE CREP Grants (New State Grant Program)	<u>Round 1 (July 2022)</u> : 17 projects applied, 4 approved for funding <u>Round 2 (February 2023)</u> : 3 projects applied	Potential is included in “Group 2” of CBRE Potential Study
PacifiCorp Opportunities (Informal input directly from communities)		Potential is included in “Group 2” of CBRE Potential Study

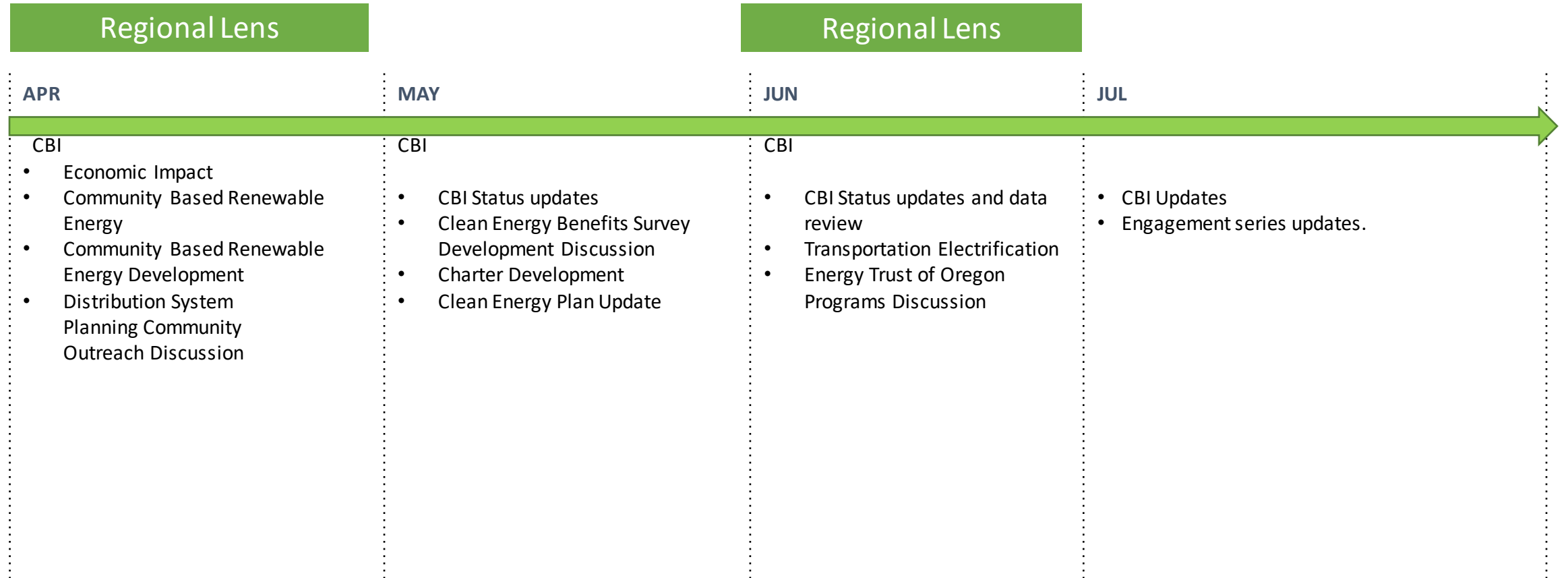
Energy Equity or Health & Community Well-being: Energy Efficiency

Potential CBI: Increase Participation in Company Energy and Efficiency Programs and Billing Assistance Programs

Potential Metric: Number and total incentives for households and businesses who participate in energy efficiency and billing assistance programs by census tract

Background: PacifiCorp supports several existing programs designed to lower customer energy costs and reduce energy burden. These include the Home Energy Savings Program, Wattsmart Business Program, Home Energy Report Program, Solar for Homes Program, Low-Income Discount (LID) and the Low-Income Bill Assistance Program.

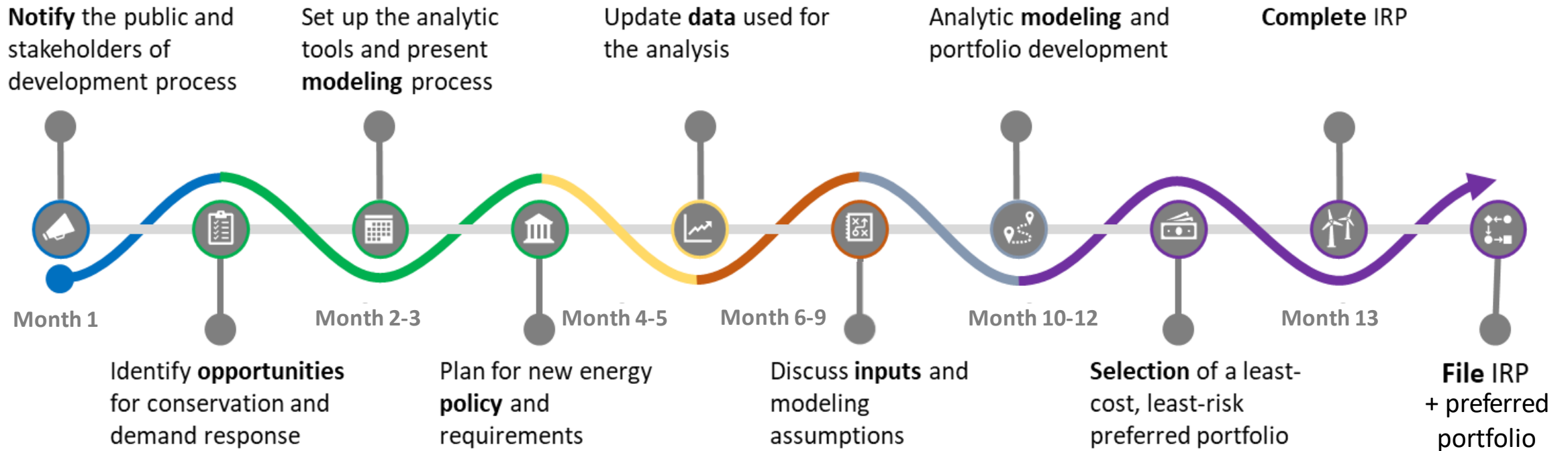
Proposed Upcoming CBIAG Topics and Meetings



Oregon Proposed Interim CBIs

Customer Benefit Indicator Category	Interim Customer Benefit Indicators	Interim Customer Benefit Indicator Metrics	Purpose
Rulemaking Language	Outcomes	How we Measure Outcomes	Why
Resiliency (System and Community)	<p>Reduce frequency and duration of energy outages</p> <p>Improve resiliency of vulnerable communities during energy outages</p>	<p>Metric of Energy Not Served (ENS) from IRP portfolios</p> <p>SAIDI, SAIFI, and CAIDI at area level including major events</p>	SAIDI, SAIFI and CAIDI scores show how reliable and resilient areas of PacifiCorp's system are. Producing these metrics for Census Tracts will demonstrate how reliable and resilient our system at the community level.
Health and Community Well-being	Decrease number of residential disconnections	Number of residential customer disconnections	Access to energy affects the provision and sustainability of basic human needs. Disconnections could be the result of a customer's decision whether to pay utility bills or pay for other basic needs like paying rent, buying food, or purchasing prescription drugs. Tracking disconnections by Census Tract provides an indicator of how communities may be struggling with their basic needs.
Environmental Impacts	Increase energy from non-emitting resources and reduce CO2 emissions to meet HB 2021 targets	<p>Percent of renewable and non-emitting resources serving Oregon retail customers</p> <p>Amount of emissions associated with Oregon retail sales</p>	Reduce fossil fuel resources and increase renewable and non-emitting resources that currently power Oregon's grid, thereby leading to increased environmental benefits, while maintaining system reliability and on-demand service to customers.
Energy Equity (Distributional and Intergenerational Equity)	Decrease number of households experiencing high energy burden	<p>Energy burden by census tract</p> <p>Energy burden for low-income customers, bill assistance participants and Tribal members</p>	Energy equity is concept that all member of society should be able to afford and have access to a necessary and basic amount of energy. Energy burdened households spend a disproportionate amount of their income on home energy costs. Tracking energy burden by Census Tract provides an indicator of energy equity for communities in PacifiCorp's Oregon service territory.
Economic Impacts	Increase community-focused efforts and investments	TBD	The purpose of this CBI is to focus investments so that communities more equitably receive benefits. Impacts from these investments will have positive implications on communities.

Overview of PacifiCorp's IRP Development Process



PacifiCorp seeks, receives, and incorporates public feedback throughout the IRP development cycle

Learn more about PacifiCorp's IRPs at: www.pacificorp.com/irp

Community-Based Renewable Energy Requirements

Utilities are required to:“(d) Examine the **costs** and **opportunities** of offsetting energy generated from fossil fuels with community-based renewable energy”

Source: HB 2021 Section 4.4(d)



Community Lens Acquisition Targets

The First CEP should include:

- A potential study that identifies opportunities for community-based renewable energy projects (CBREs) developed in coordination with communities ... with input from stakeholders and Staff.
The potential study should... identify acquisition targets (annual MW/MWh)... balance costs, risks and community impacts (using CBIs)... include action plan...
- Explanation of how utility’s plan for future CBREs complies with the state's goal for community-based renewable energy projects provided in ORS 469A.210 and explain how the CBRE targets align with this strategy



Opportunities Considered within Community Lens Potential Studies

Opportunities for CBRE actions, including distributed resources and their resiliency benefits, should be developed in coordination with communities that are served by the utility, including environmental justice communities, and with input from stakeholders and Staff. (Need to reference other processes)



Off-setting Fossil Fuels with CBREs

For the first CEP

- The utility should incorporate the CBRE acquisition targets into IRP portfolio modeling...
- If system-wide benefits exist for a potential CBRE, the utility should quantify those benefits in a manner consistent with the IRP when evaluating the opportunity for inclusion in the first CEP.

Key Guidelines from UM 2225 for CBREs (Community Lens section of CEP proceedings - Order 22-390)