

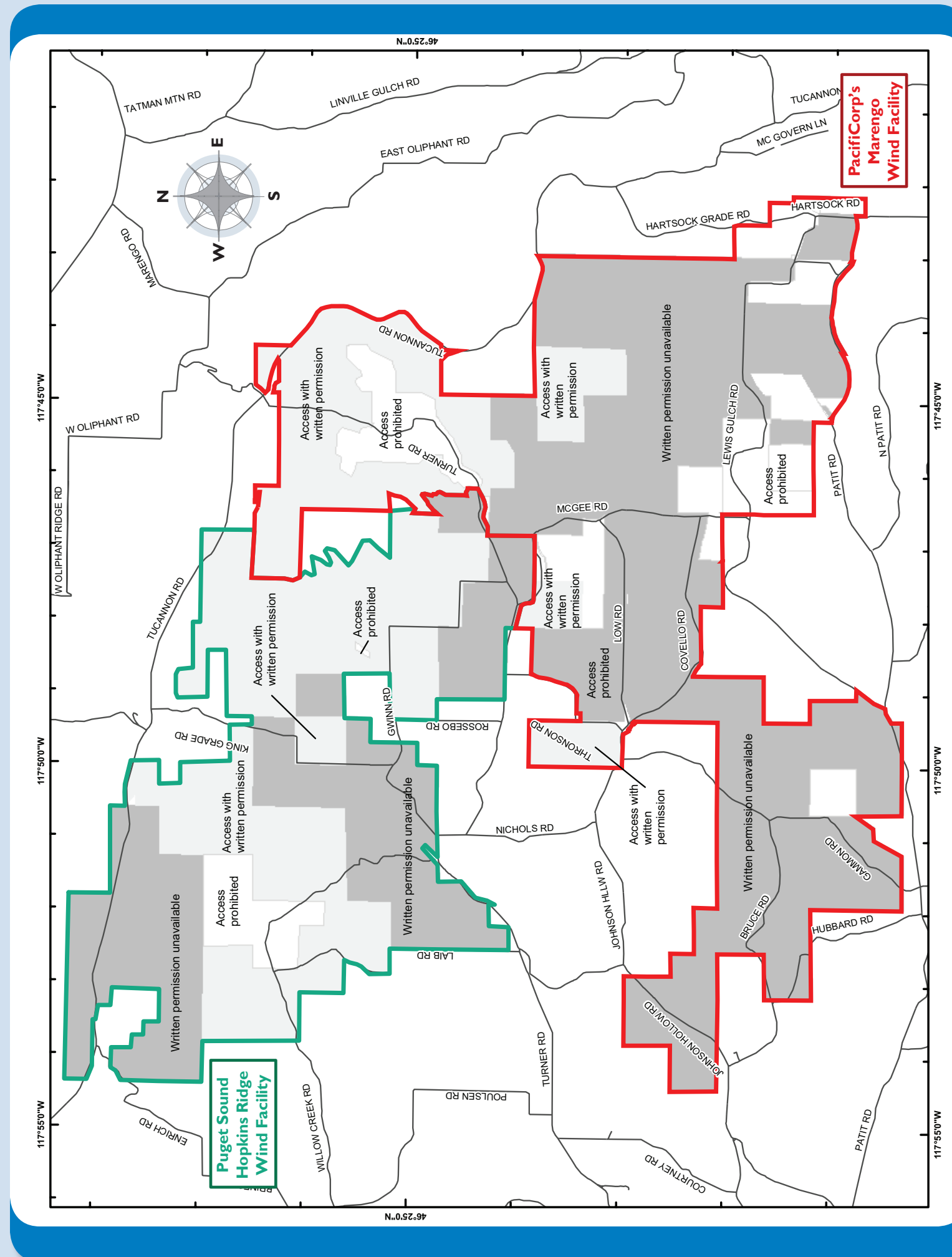
Marengo Wind Facility/
Hopkins Ridge Wind Facility

ACCESS RULES

Violation of any of the rules that follow will result in loss of all access privileges and possibly trespassing violations.

1. **NO HUNTING** during wind turbine construction periods or posted closure periods.
2. **NO ACCESS** of any kind within 300 feet of the wind turbines, buildings or substations.
3. **NO ACCESS** of any kind within 1,000 feet (333 yards) of the wind turbines from the 3rd Sunday of November through the 3rd Sunday of February due to potential icing conditions.
4. **NO POINTING OR SHOOTING OF ANY WEAPON** at a target of any kind with people, wind turbines, overhead power lines, splice boxes, J-boxes, maintenance vehicles, signs, maintenance facilities, or substation in your scope of view. NO shooting from vehicles, across roads, or from any maintained portion of wind facility access roads.
5. **NO VEHICLE TRAFFIC** of any kind on Lessors' property except on normally traveled COUNTY roads. Driving on wind-turbine access roads is not allowed. This includes operation of OFF-ROAD VEHICLES (ORVs) and ALL-TERRAIN VEHICLES (ATVs).
6. **NO HORSES OR PACK ANIMALS** are allowed on Lessors' property unless previously authorized.
7. **DO NOT BLOCK ACCESS** gates or entrances.
8. All hunters must abide by Washington State Game Rules and Regulations.
9. All access may be canceled on Lessors' land whenever it is deemed necessary by Lessors or Lessees.
10. No overnight camping/parking or outdoor fires on Lessors' property unless previously authorized.
11. **A COPY OF THE ACCESS PERMISSION AGREEMENT** must be carried on you while hunting within the PacifiCorp Marengo Wind Facility and Puget Sound Energy Hopkins Ridge areas.

To help ensure continued access to these lands, please report any violations of rules or laws to the Columbia County Sheriff's Office 509-382-1100. OR if an emergency, please dial 911.



Marengo Wind Facility/
Hopkins Ridge Wind Facility

ACCESS RULES AND MAP



Marengo Details

PacifiCorp's Marengo Wind Facility and Puget Sound Energy's Hopkins Ridge Wind Facility lie on 29,000 acres of farm and rangeland between Dayton and Pomeroy. The utilities lease the land from private landowners and the state of Washington. While much of this land is open to public access, special rules are in place to ensure the safety of visitors, hunters, local residents and wind-facility workers. These rules, summarized in this pamphlet, also are designed to prevent damage to the wind farm's equipment.



Wind Project Hunting Access Map

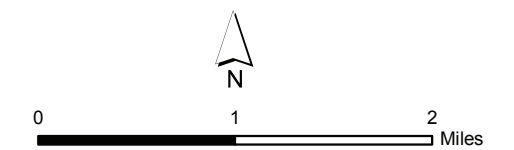
For additional information contact PacifiCorp at 509-435-8723 or visit pacifiCorp.com/hunting.

Legend

- Turbines
- Last Resort RV Park
- PacifiCorp O & M Building
- Signs with GPS locations

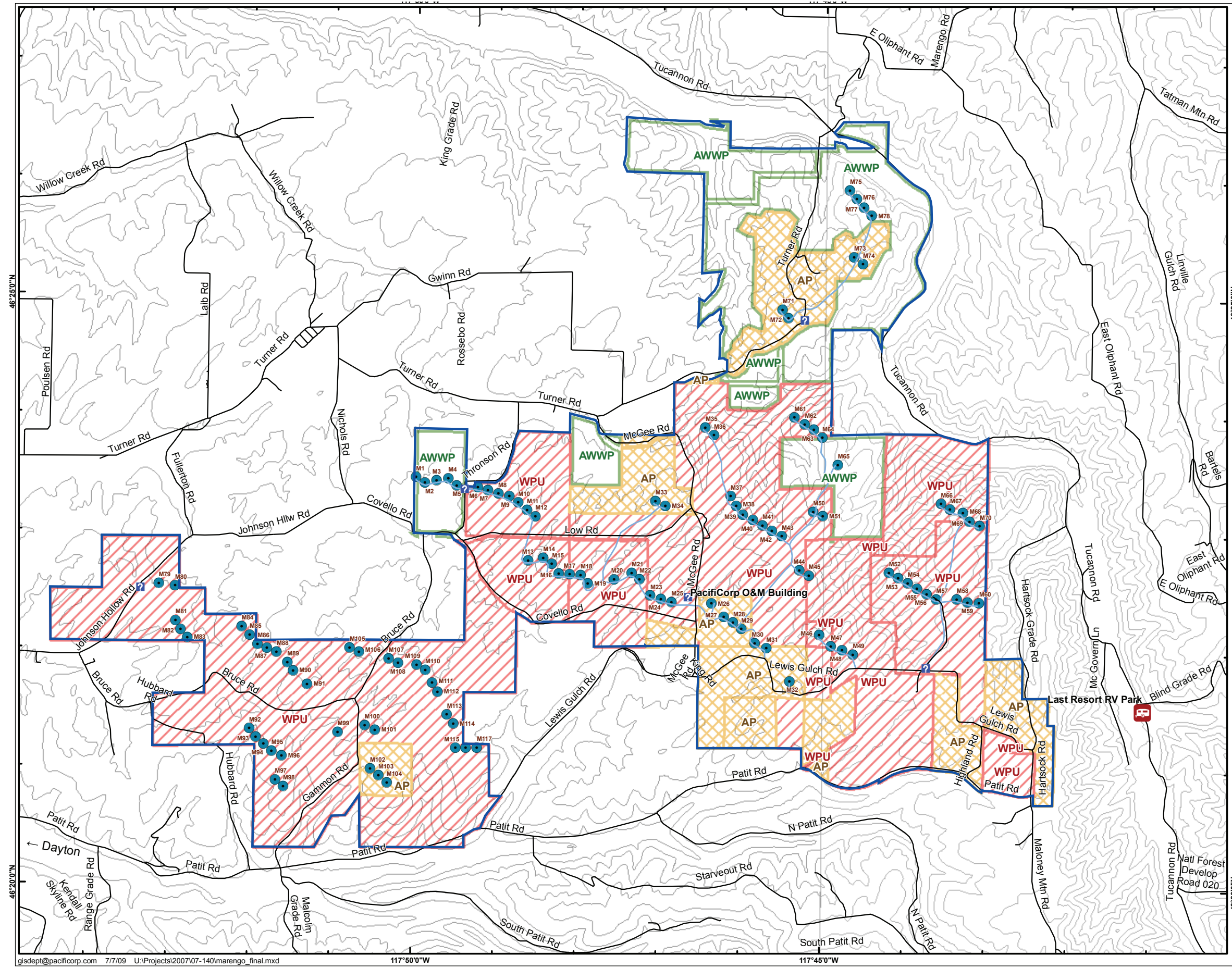
Streets

- Primary Highway
- Secondary Highway
- Local Road
- Turbine access roads - no public access
- AWWP
- AP - Access Prohibited
- WPU - Written Permission Unavailable



Data Management/
Geographic Information Systems
gisdept@pacifiCorp.com

Data is projected in UTM Zone 10, NAD83, meters.
PacifiCorp GIS collects data from a variety of government and private sources. PacifiCorp makes no warranty as to the accuracy, reliability, or completeness of this data for individual or aggregate use with other data. For complete validation, the source organization should be contacted or source documents consulted to verify the findings of this product.



gisdept@pacifiCorp.com 7/7/09 U:\Projects\2007\07-140\marengo_final.mxd 117°50'0"W 117°45'0"W