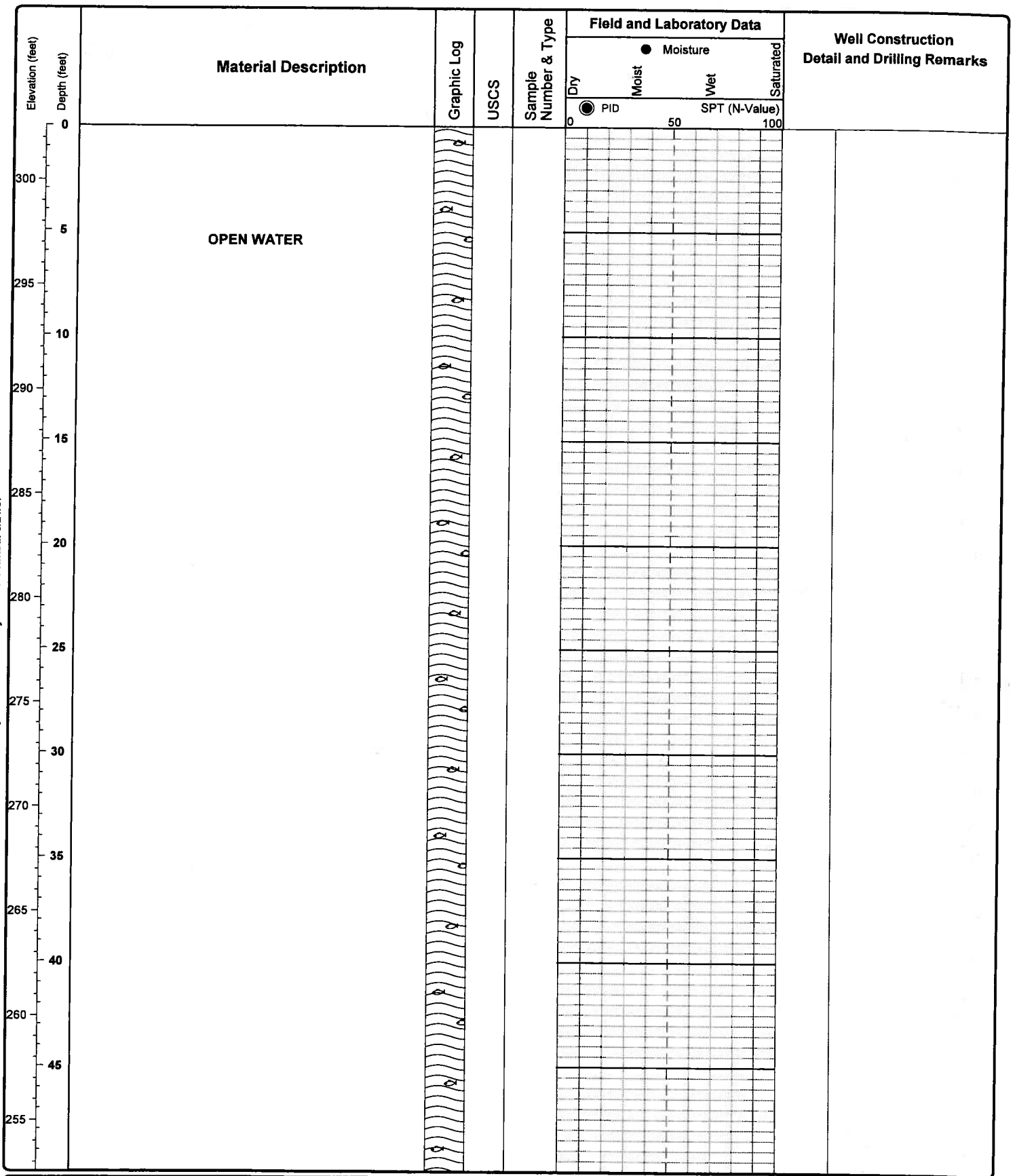



Appendix C

Boring Logs

Report: ENV BORING LOG Template: SQUIER_KLEINFELDER_TEMPLATES.GDT Proj ID: 53886.GPJ Key ID: B-1 Printed: 3/21/07



Date Drilling Started	12/18/06	State Well ID	NA	Location	Northwestern Lake	
Drilling Method	Direct Push Probe	Hammer Drop System	N.A.	Driller	Boart Longyear	
Drill Rig Type	Track	Hammer Drop Length (in.)	N.A.	Wt. Drive Hammer (lbs.)	N.A.	Borehole Diameter (in.) 4
Logged By	S. Shoemaker	Total Depth (ft)	108.0	Station (ft):	NA	Offset (ft): NA
Surface Elevation (ft)	302.6	Elevation Datum	NAVD 88	Coordinates:	N 45.8	E 121.5

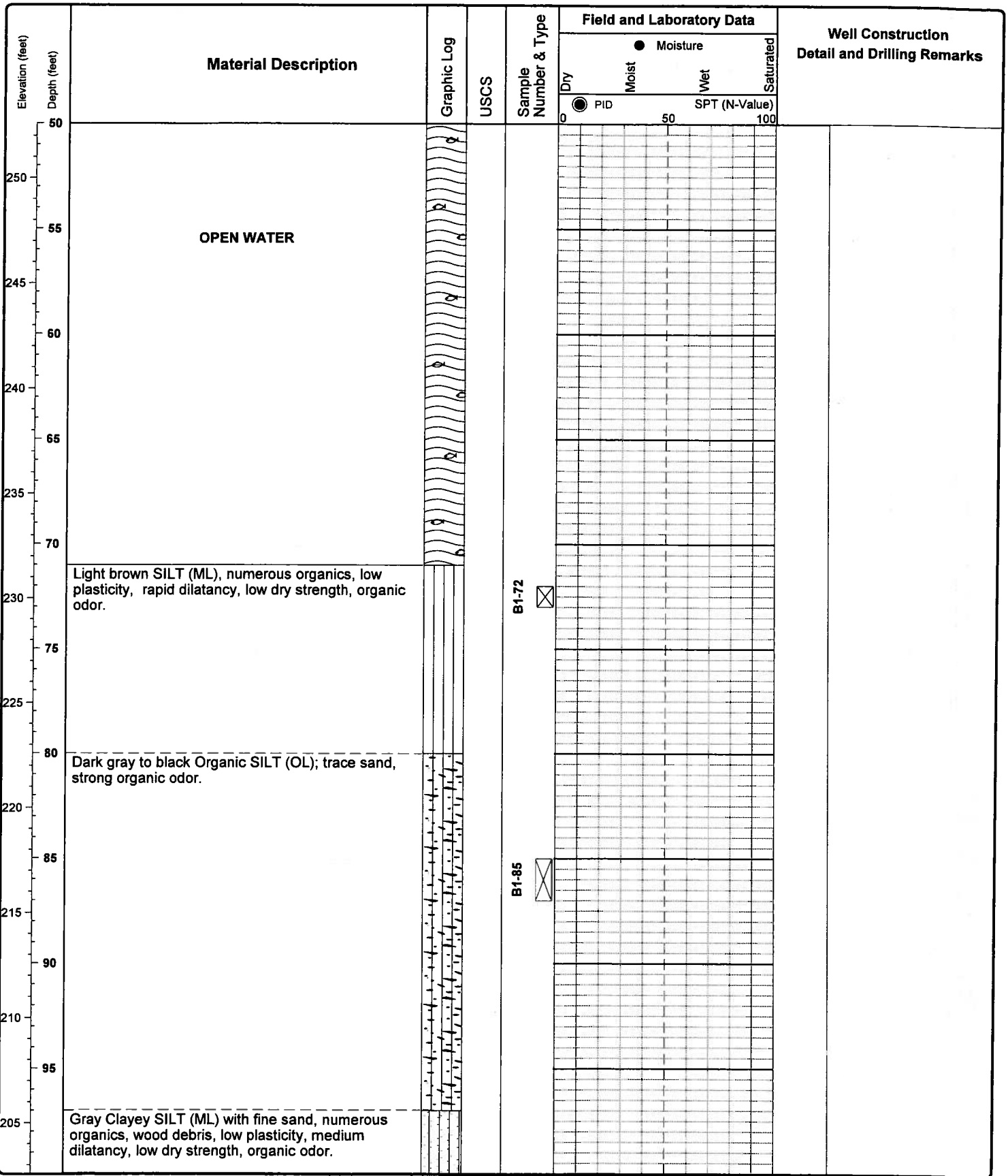
Condit Dam Sediment Evaluation
Northwestern Lake
BORING LOG B-1
 Project No. 53886
 **KLEINFELDER**
 Employee-owned
 (Sheet 1 of 3)

NOTE: Lines representing the interface between soil/rock units of differing description are approximate only and may indicate gradual transition

Reviewed 

FIGURE

Report: ENV BORING LOG Template: SQUIER_KLEINFELDER_TEMPLATES.GDT Proj ID: 53886.GPJ Key ID: B-1 Printed: 3/21/07



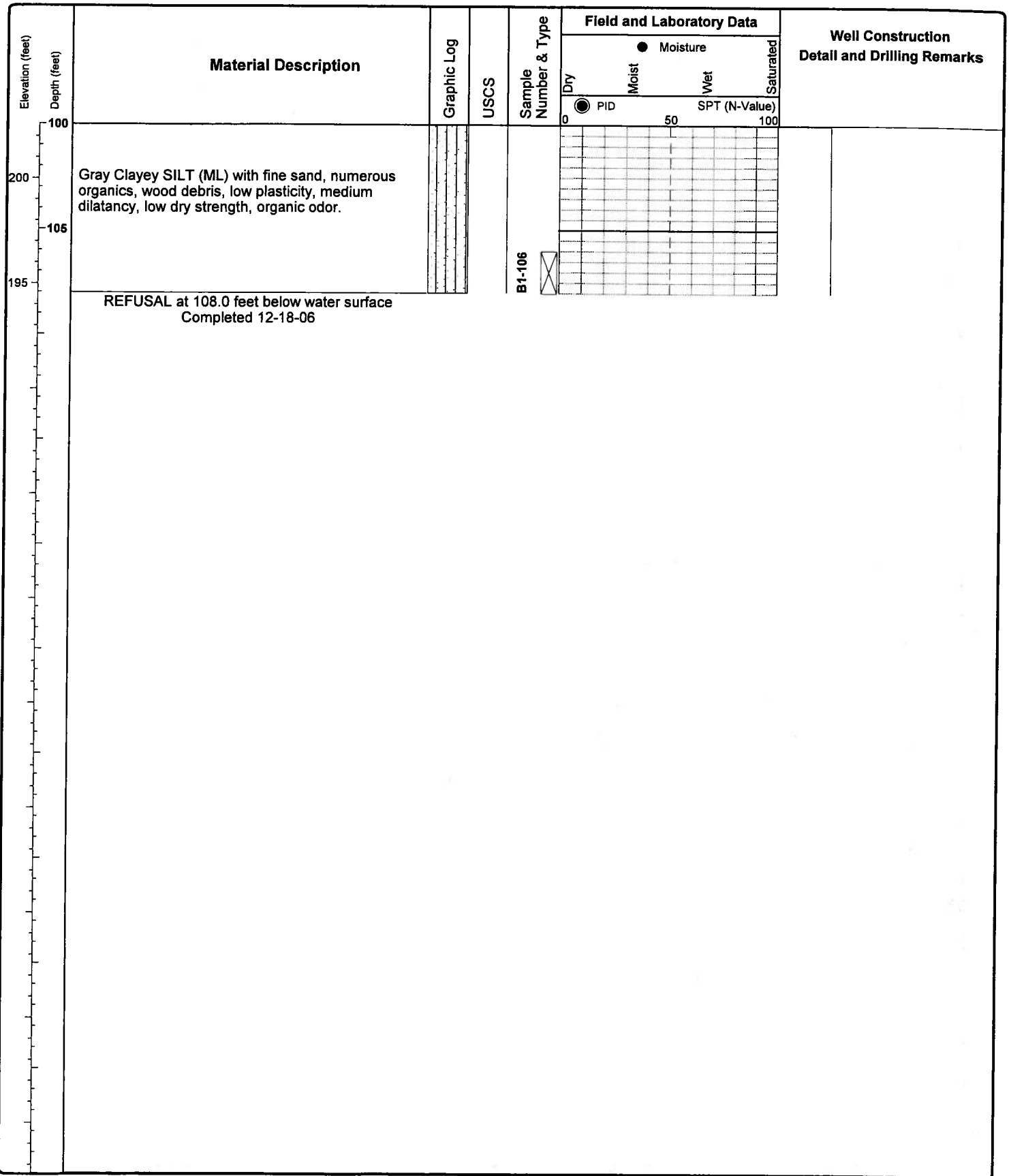
Date Drilling Started	12/18/06	State Well ID	NA	Location	Northwestern Lake		
Drilling Method	Direct Push Probe	Hammer Drop System	N.A.	Driller	Boart Longyear		
Drill Rig Type	Track	Hammer Drop Length (in.)	N.A.	Wt. Drive Hammer (lbs.)	N.A.	Borehole Diameter (in.)	4
Logged By	S. Shoemaker	Total Depth (ft)	108.0	Station (ft):	NA	Offset (ft):	NA
Surface Elevation (ft)	302.6	Elevation Datum	NAVD 88	Coordinates:	N 45.8	E 121.5	

Condit Dam Sediment Evaluation
Northwestern Lake
BORING LOG B-1
 Project No. 53886
KLEINFELDER
Employee-owned
 (Sheet 2 of 3)


NOTE: Lines representing the interface between soil/rock units of differing description are approximate only and may indicate gradual transition

Reviewed *[Signature]*

FIGURE



Date Drilling Started	12/18/06	State Well ID	NA	Location	Northwestern Lake
Drilling Method	Direct Push Probe	Hammer Drop System	N.A.	Driller	Boart Longyear
Drill Rig Type	Track	Hammer Drop Length (in.)	N.A.	Wt. Drive Hammer (lbs.)	N.A.
				Borehole Diameter (in.)	4
Logged By	S. Shoemaker	Total Depth (ft)	108.0	Station (ft):	NA
				Offset (ft):	NA
Surface Elevation (ft)	302.6	Elevation Datum	NAVD 88	Coordinates:	N 45.8 E 121.5

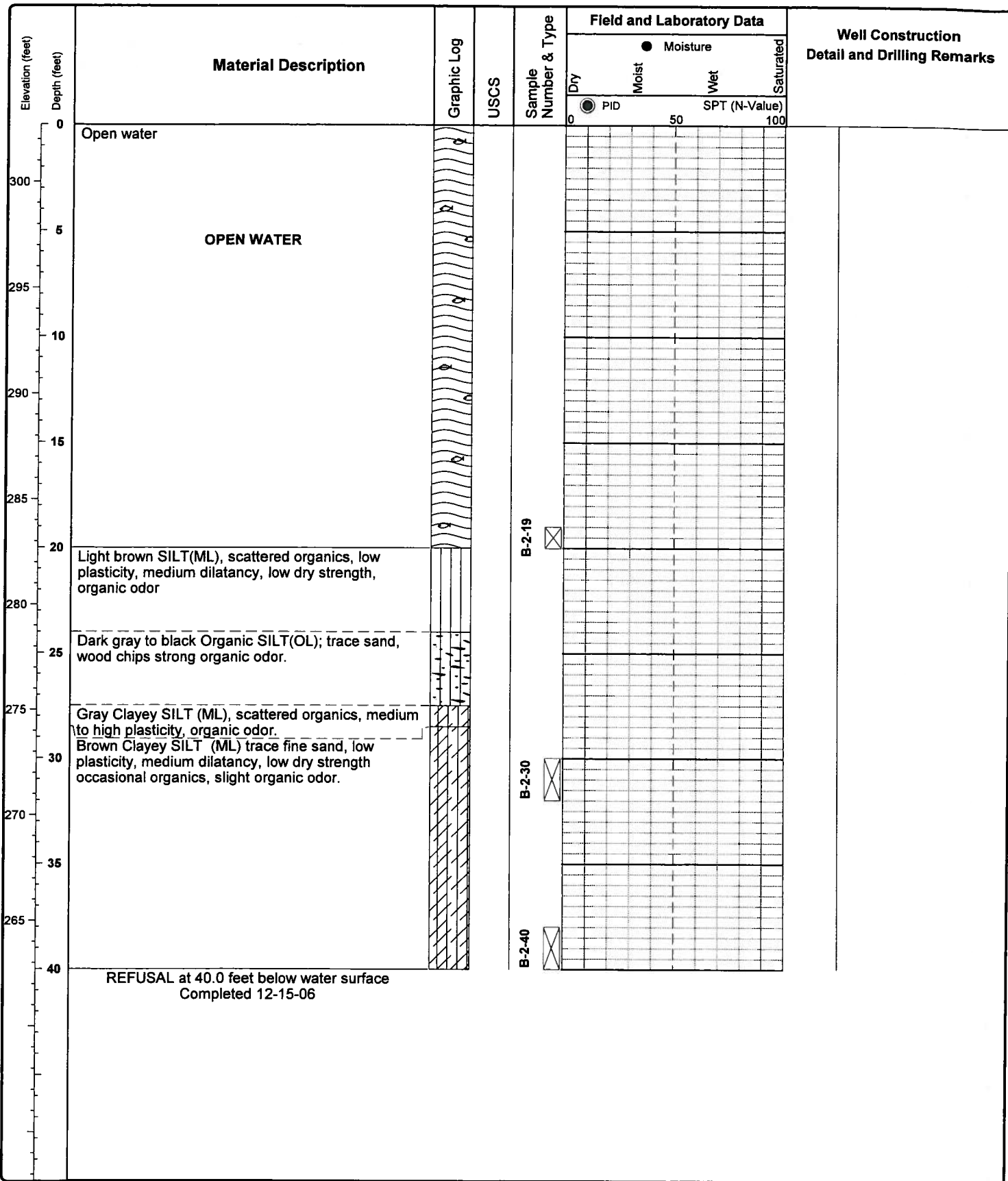
Condit Dam Sediment Evaluation
Northwestern Lake
BORING LOG B-1
 Project No. 53886
 **KLEINFELDER**
Employee-owned
 (Sheet 3 of 3)

NOTE: Lines representing the interface between soil/rock units of differing description are approximate only and may indicate gradual transition


Reviewed DEX

FIGURE

Report: ENV BORING LOG Template: SQUIER_KLEINFELDER_TEMPLATES.GDT Proj ID: 53886.GPJ Key ID: B-2 Printed: 3/21/07



Date Drilling Started	12/15/06	State Well ID	NA	Location	Northwestern Lake		
Drilling Method	Direct Push Probe	Hammer Drop System	N.A.	Driller	Boart Longyear		
Drill Rig Type	Track	Hammer Drop Length (in.)	N.A.	Wt. Drive Hammer (lbs.)	N.A.	Borehole Diameter (in.)	4
Logged By	S. Shoemaker	Total Depth (ft)	40.0	Station (ft):	NA	Offset (ft):	NA
Surface Elevation (ft)	302.7	Elevation Datum	NAVD 88	Coordinates:	N 45.8	E 121.5	

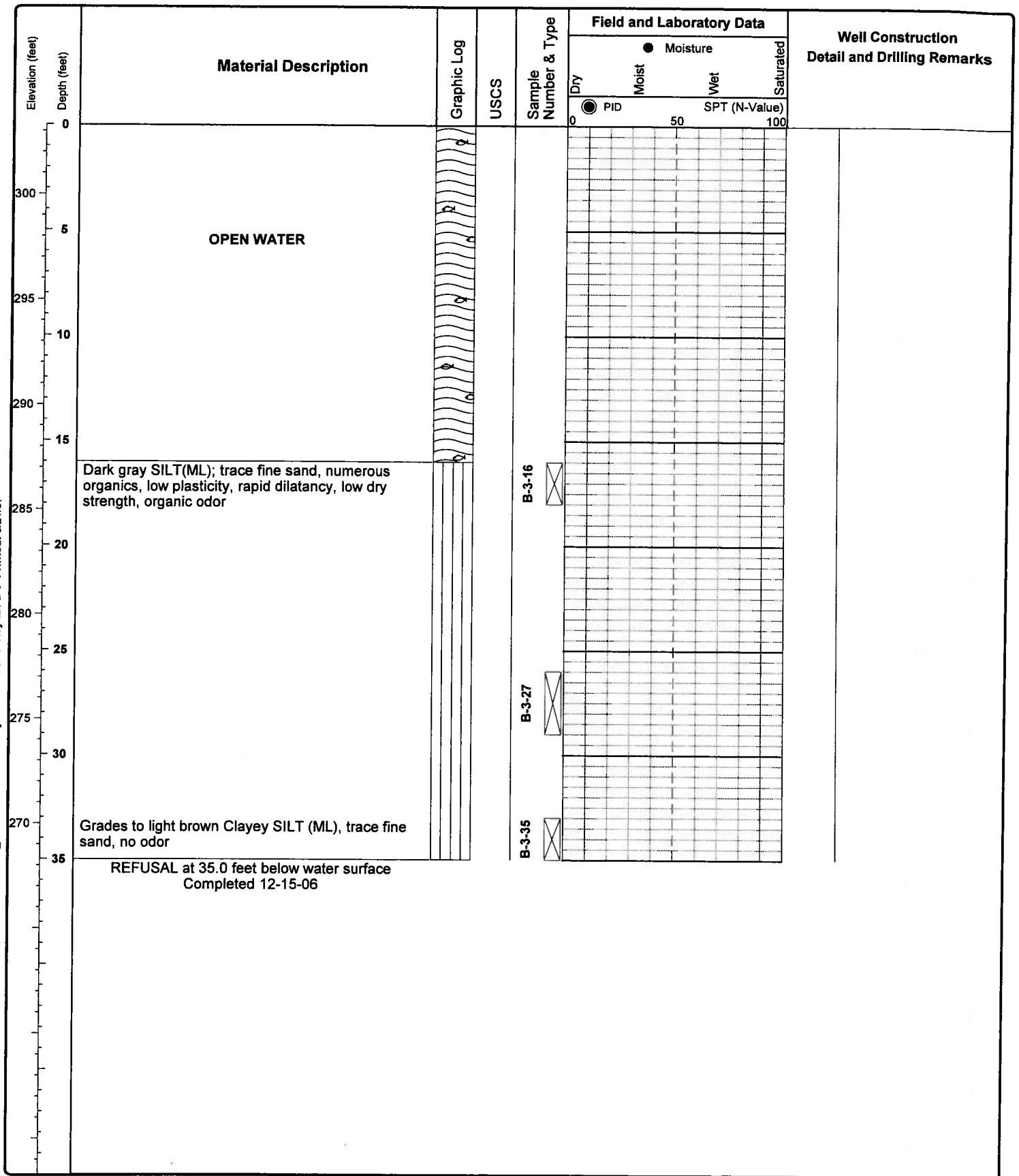
Condit Dam Sediment Evaluation
Northwestern Lake
BORING LOG B-2
 Project No. 53886
 **KLEINFELDER**
Employee-owned
 (Sheet 1 of 1)

NOTE: Lines representing the interface between soil/rock units of differing description are approximate only and may indicate gradual transition

Reviewed *[Signature]*

FIGURE

Report: ENV BORING LOG Template: SQUIER_KLEINFELDER_TEMPLATES.GDT Proj ID: 53886.GPJ Key ID: B-3 Printed: 3/21/07



Date Drilling Started 12/14/06		State Well ID NA		Location Northwestern Lake	
Drilling Method Direct Push Probe		Hammer Drop System N.A.		Driller Boart Longyear	
Drill Rig Type Track		Hammer Drop Length (in.) N.A.		Wt. Drive Hammer (lbs.) N.A.	
Borehole Diameter (in.) 4		Total Depth (ft) 35.0		Station (ft): NA Offset (ft): NA	
Logged By S. Shoemaker		Elevation Datum NAVD 88		Coordinates: N 45.8 E 121.5	
Surface Elevation (ft) 303.3					

Condit Dam Sediment Evaluation
Northwestern Lake

BORING LOG B-3

Project No. 53886

KLEINFELDER
Employee-owned

(Sheet 1 of 1)


NOTE: Lines representing the interface between soil/rock units of differing description are approximate only and may indicate gradual transition

Reviewed

FIGURE

Elevation (feet) Depth (feet)	Material Description	Graphic Log	USCS	Sample Number & Type	Field and Laboratory Data			Well Construction Detail and Drilling Remarks
					Dry	Moist	Wet	
					Moisture ●	PID ●	SPT (N-Value)	
0							50	
5	OPEN WATER							
15	Gray brown Silty SAND (SM), fine sand, occasional organics, very low plasticity, rapid dilatancy, very low dry strength, slight organic odor			B-4-15	☒			
20	Gray SAND (SP-SM) with silt, fine sand, occasional organics, no odor.							
25	Gravelly SILT (ML) fine to medium gravel, occasional organics, no odor Gray Silty SAND (SM), fine sand, occasional organics, non-plastic, no odor.			B-4-24	☒			
35	REFUSAL at 35.0 feet below water surface Completed 12-14-06			B-4-35	☒			

Date Drilling Started	12/13/06	State Well ID	NA	Location	Northwestern Lake		
Drilling Method	Direct Push Probe	Hammer Drop System	N.A.	Driller	Boart Longyear		
Drill Rig Type	Track	Hammer Drop Length (in.)	N.A.	Wt. Drive Hammer (lbs.)	N.A.	Borehole Diameter (in.)	4
Logged By	S. Shoemaker	Total Depth (ft)	35.0	Station (ft):	NA	Offset (ft):	NA
Surface Elevation (ft)	302.5	Elevation Datum	NAVD 88	Coordinates:	N 45.8	E 121.5	

Condit Dam Sediment Evaluation
 Northwestern Lake
BORING LOG B-4
 Project No. 53886
 **KLEINFELDER**
 Employee-owned
 (Sheet 1 of 1)

NOTE: Lines representing the interface between soil/rock units of differing description are approximate only and may indicate gradual transition

Reviewed 

FIGURE