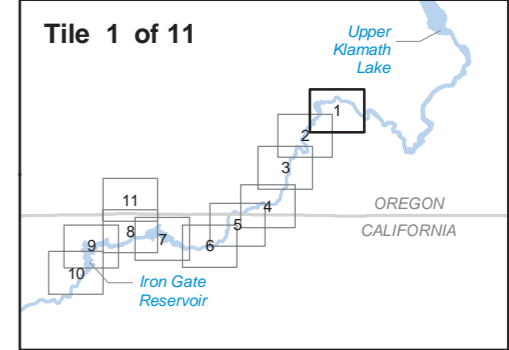
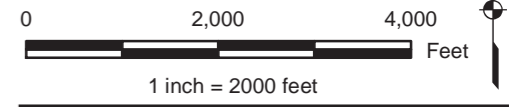


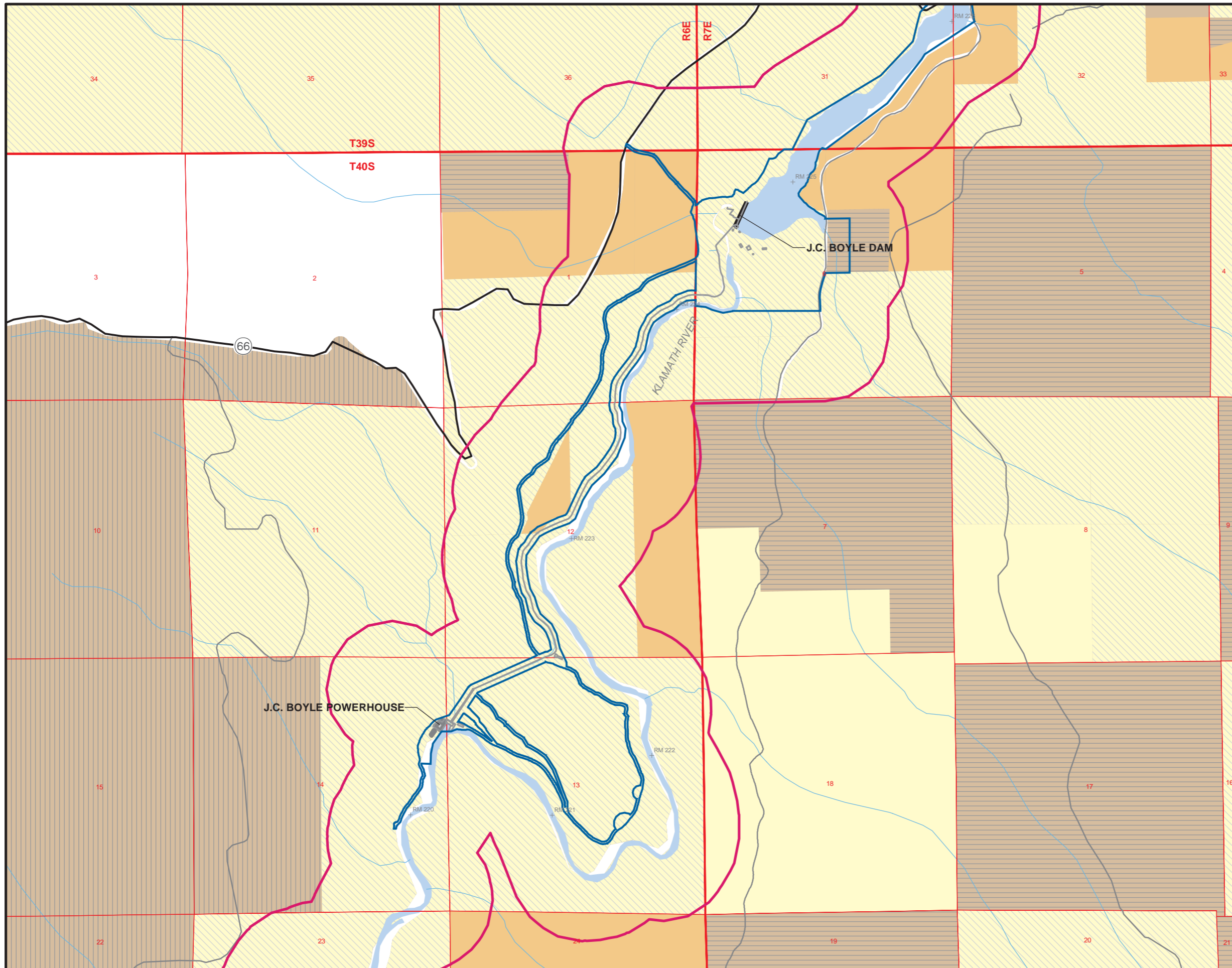
- LEGEND**
- CITY
  - ▭ PROPOSED FERC BOUNDARY
  - ▭ STUDY AREA (1/4 MILE FROM EXISTING FERC BOUNDARY OR RIVER)
  - HIGHWAY
  - MAIN ROAD
  - ▭ TOWNSHIP/RANGE
  - ▭ SECTION
  - STREAM
  - ▭ LAKE OR RESERVOIR
- KLAMATH COUNTY**
- ▭ EXCLUSIVE FARM USE
  - ▭ FORESTRY
  - ▭ FORESTRY/RANGE
  - ▭ NON-RESOURCE
  - ▭ INDUSTRIAL
  - ▭ RURAL RESIDENTIAL
  - ▭ SUBURBAN RESIDENTIAL
  - ▭ PLANNED UNIT DEVELOPMENT
  - ▭ COMMERCIAL
  - ▭ RECREATION COMMERCIAL
  - ▭ TRANSPORTATION COMMERCIAL
  - ▭ NO DATA AVAILABLE
- SISKIYOU COUNTY**
- ▭ PRIME AGRICULTURE
  - ▭ NON-PRIME AGRICULTURE
  - ▭ TIMBERLAND PRODUCTION DISTRICT
  - ▭ RURAL RESIDENTIAL AGRICULTURE
  - ▭ PLANNED DEVELOPMENT
  - ▭ NEIGHBORHOOD COMMERCIAL
  - ▭ TOWN CENTER
  - ▭ NO DATA AVAILABLE

ZONING CLASSIFICATIONS HAVE BEEN GENERALIZED. MORE DETAILED ZONING INFORMATION IS AVAILABLE FROM THE RELEVANT JURISDICTIONS.



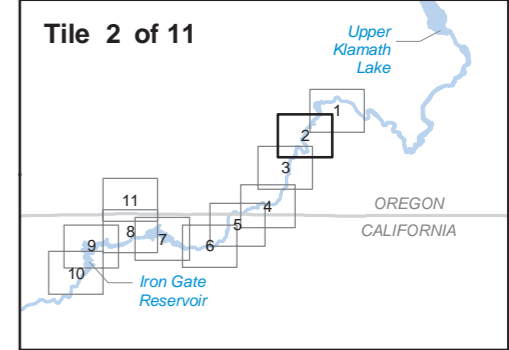
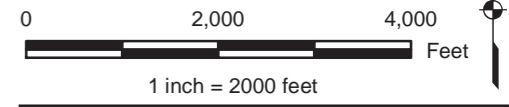
**Klamath Hydroelectric Project**

**Figure E8.1-2 (1 of 11)**  
Zoning

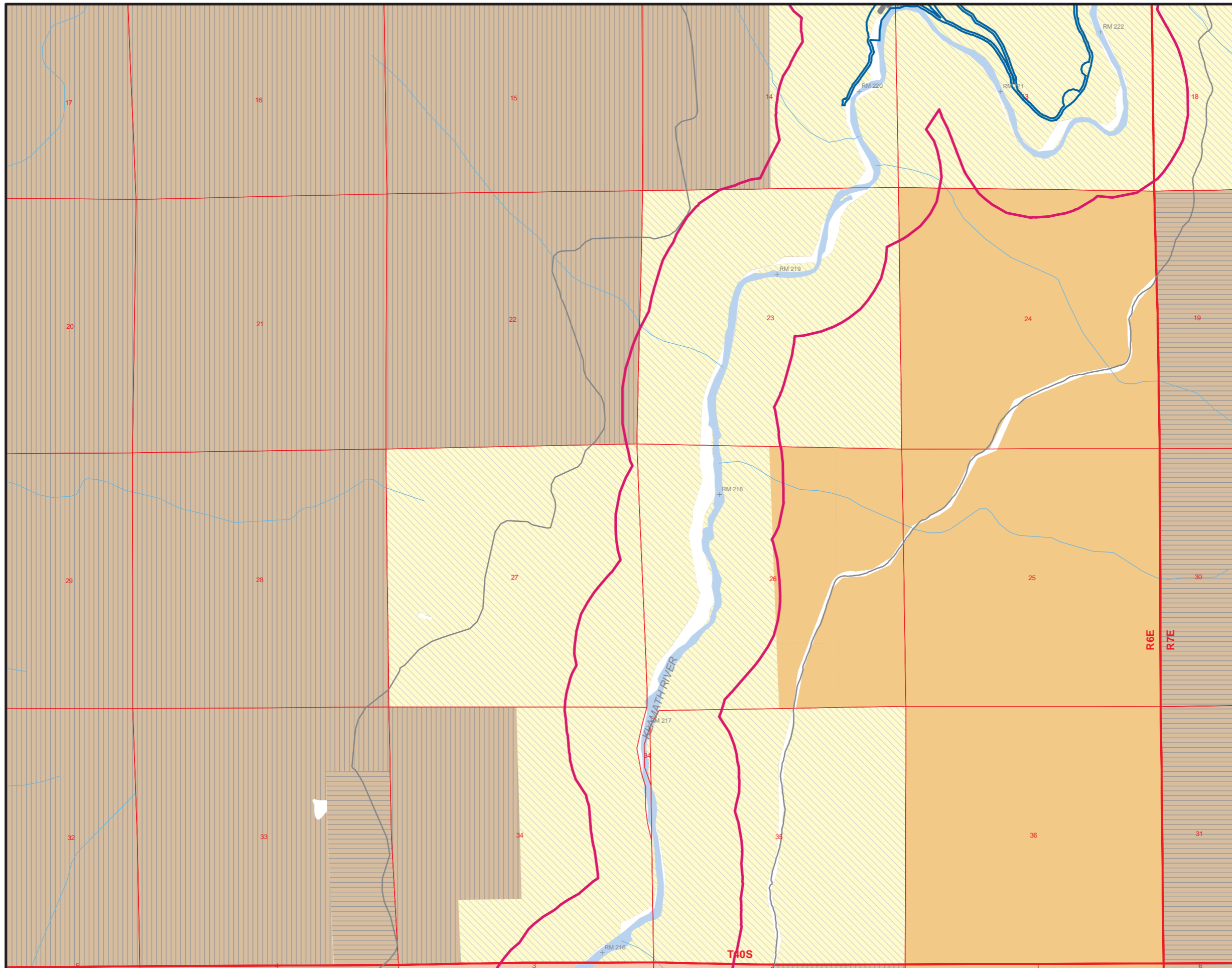


- LEGEND**
- CITY
  - ▭ PROPOSED FERC BOUNDARY
  - ▭ STUDY AREA (1/4 MILE FROM EXISTING FERC BOUNDARY OR RIVER)
  - HIGHWAY
  - MAIN ROAD
  - ▭ TOWNSHIP/RANGE
  - ▭ SECTION
  - STREAM
  - ▭ LAKE OR RESERVOIR
  - KLAMATH COUNTY**
  - ▭ EXCLUSIVE FARM USE
  - ▭ FORESTRY
  - ▭ FORESTRY/RANGE
  - ▭ NON-RESOURCE
  - ▭ INDUSTRIAL
  - ▭ RURAL RESIDENTIAL
  - ▭ SUBURBAN RESIDENTIAL
  - ▭ PLANNED UNIT DEVELOPMENT
  - ▭ COMMERCIAL
  - ▭ RECREATION COMMERCIAL
  - ▭ TRANSPORTATION COMMERCIAL
  - ▭ NO DATA AVAILABLE
  - SISKIYOU COUNTY**
  - ▭ PRIME AGRICULTURE
  - ▭ NON-PRIME AGRICULTURE
  - ▭ TIMBERLAND PRODUCTION DISTRICT
  - ▭ RURAL RESIDENTIAL AGRICULTURE
  - ▭ PLANNED DEVELOPMENT
  - ▭ NEIGHBORHOOD COMMERCIAL
  - ▭ TOWN CENTER
  - ▭ NO DATA AVAILABLE

ZONING CLASSIFICATIONS HAVE BEEN GENERALIZED. MORE DETAILED ZONING INFORMATION IS AVAILABLE FROM THE RELEVANT JURISDICTIONS.



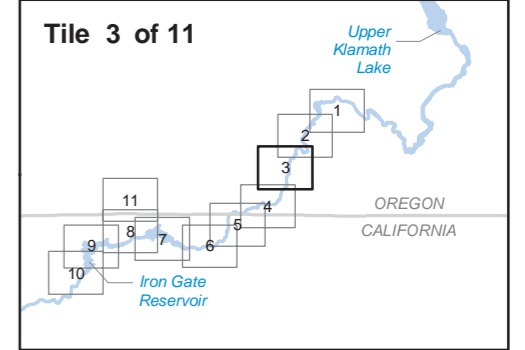
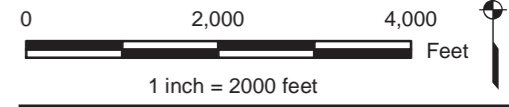
**Klamath Hydroelectric Project**  
**Figure E8.1-2 (2 of 11)**  
**Zoning**



**LEGEND**

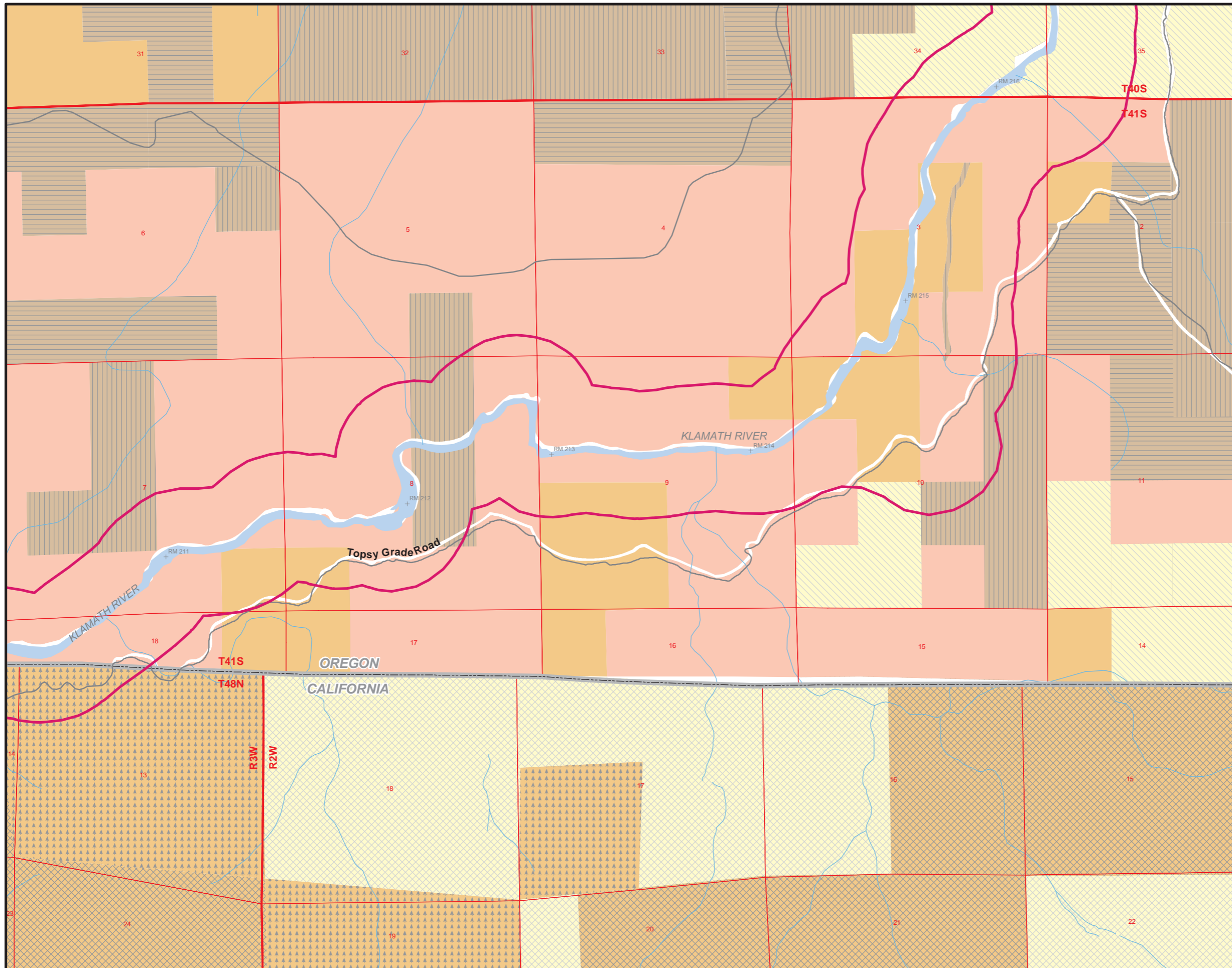
- CITY
- ▭ PROPOSED FERC BOUNDARY
- ▭ STUDY AREA (1/4 MILE FROM EXISTING FERC BOUNDARY OR RIVER)
- HIGHWAY
- MAIN ROAD
- ▭ TOWNSHIP/RANGE
- ▭ SECTION
- STREAM
- ▭ LAKE OR RESERVOIR
- KLAMATH COUNTY**
- ▭ EXCLUSIVE FARM USE
- ▭ FORESTRY
- ▭ FORESTRY/RANGE
- ▭ NON-RESOURCE
- ▭ INDUSTRIAL
- ▭ RURAL RESIDENTIAL
- ▭ SUBURBAN RESIDENTIAL
- ▭ PLANNED UNIT DEVELOPMENT
- ▭ COMMERCIAL
- ▭ RECREATION COMMERCIAL
- ▭ TRANSPORTATION COMMERCIAL
- ▭ NO DATA AVAILABLE
- SISKIYOU COUNTY**
- ▭ PRIME AGRICULTURE
- ▭ NON-PRIME AGRICULTURE
- ▭ TIMBERLAND PRODUCTION DISTRICT
- ▭ RURAL RESIDENTIAL AGRICULTURE
- ▭ PLANNED DEVELOPMENT
- ▭ NEIGHBORHOOD COMMERCIAL
- ▭ TOWN CENTER
- ▭ NO DATA AVAILABLE

ZONING CLASSIFICATIONS HAVE BEEN GENERALIZED. MORE DETAILED ZONING INFORMATION IS AVAILABLE FROM THE RELEVANT JURISDICTIONS.



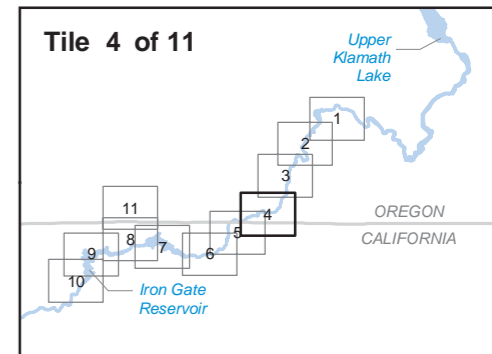
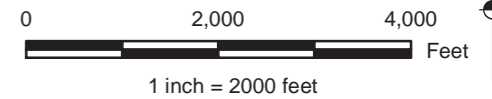
**Klamath Hydroelectric Project**

**Figure E8.1-2 (3 of 11)**  
Zoning



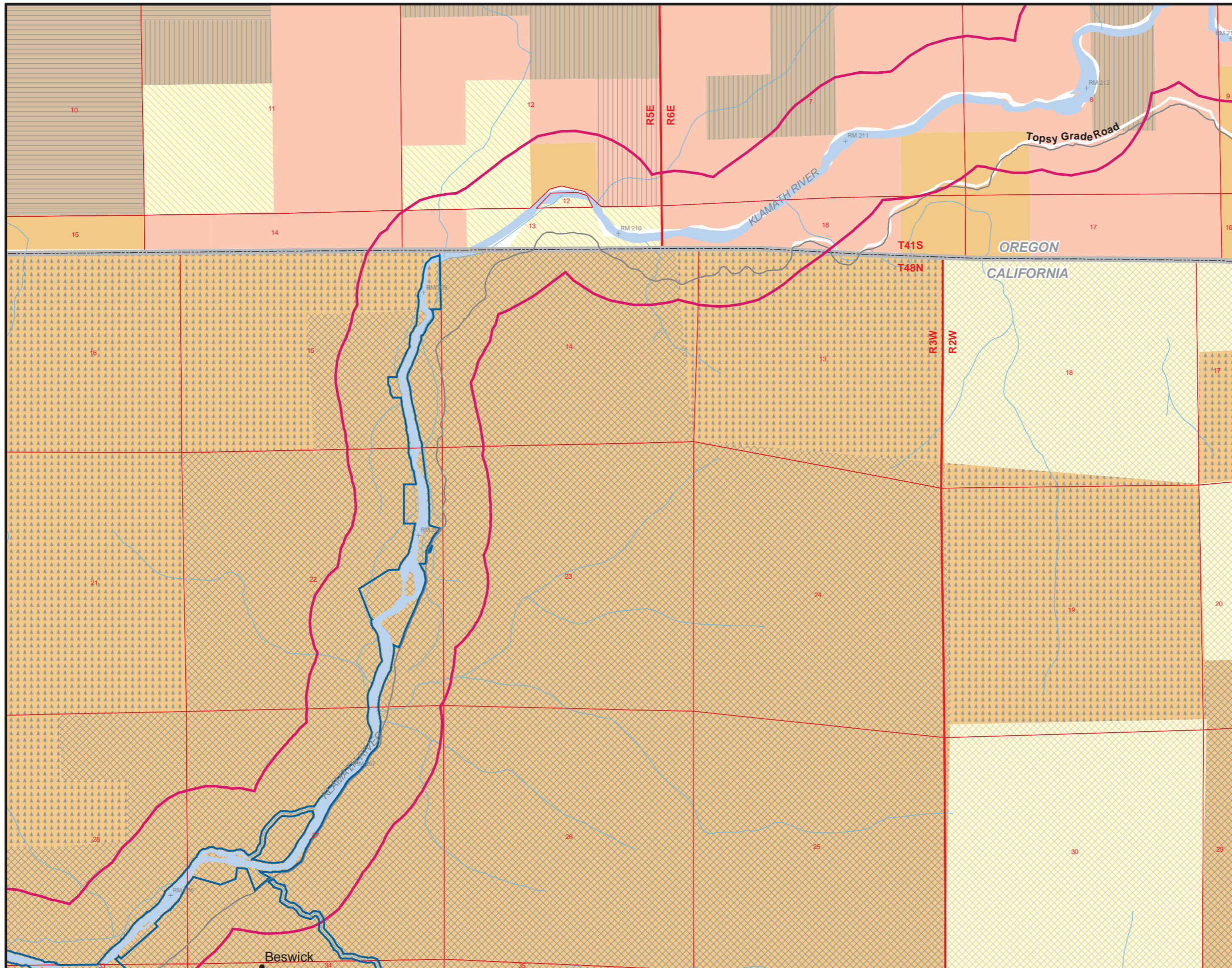
- LEGEND**
- CITY
  - ▭ PROPOSED FERC BOUNDARY
  - ▭ STUDY AREA (1/4 MILE FROM EXISTING FERC BOUNDARY OR RIVER)
  - HIGHWAY
  - MAIN ROAD
  - ▭ TOWNSHIP/RANGE
  - ▭ SECTION
  - STREAM
  - ▭ LAKE OR RESERVOIR
- KLAMATH COUNTY**
- ▭ EXCLUSIVE FARM USE
  - ▭ FORESTRY
  - ▭ FORESTRY/RANGE
  - ▭ NON-RESOURCE
  - ▭ INDUSTRIAL
  - ▭ RURAL RESIDENTIAL
  - ▭ SUBURBAN RESIDENTIAL
  - ▭ PLANNED UNIT DEVELOPMENT
  - ▭ COMMERCIAL
  - ▭ RECREATION COMMERCIAL
  - ▭ TRANSPORTATION COMMERCIAL
  - ▭ NO DATA AVAILABLE
- SISKIYOU COUNTY**
- ▭ PRIME AGRICULTURE
  - ▭ NON-PRIME AGRICULTURE
  - ▭ TIMBERLAND PRODUCTION DISTRICT
  - ▭ RURAL RESIDENTIAL AGRICULTURE
  - ▭ PLANNED DEVELOPMENT
  - ▭ NEIGHBORHOOD COMMERCIAL
  - ▭ TOWN CENTER
  - ▭ NO DATA AVAILABLE

ZONING CLASSIFICATIONS HAVE BEEN GENERALIZED. MORE DETAILED ZONING INFORMATION IS AVAILABLE FROM THE RELEVANT JURISDICTIONS.



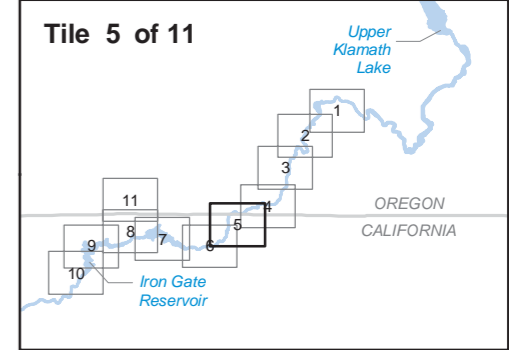
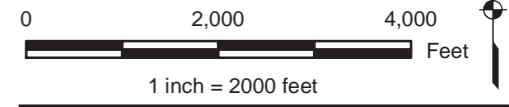
**Klamath Hydroelectric Project**

**Figure E8.1-2 (4 of 11)**  
Zoning

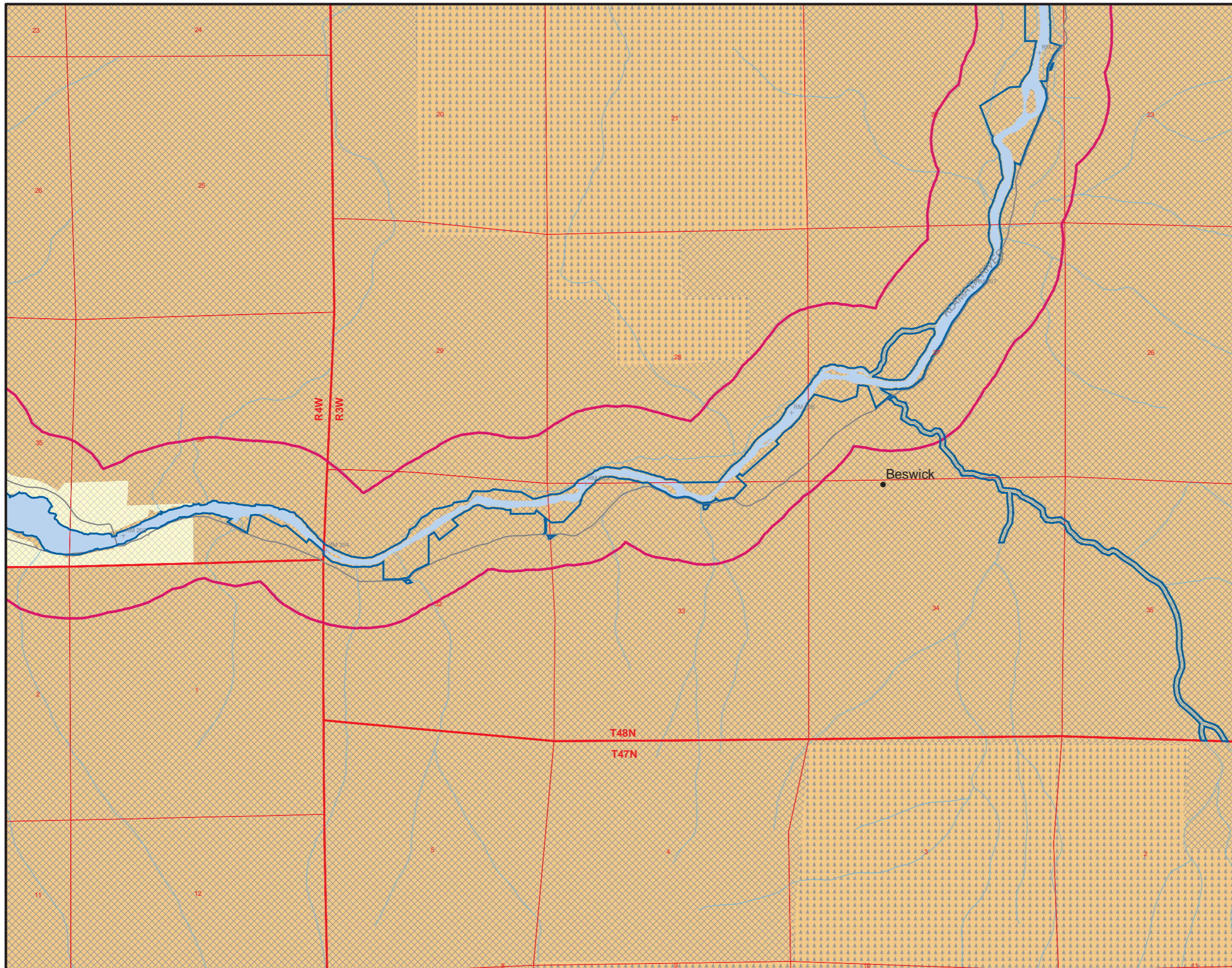


- LEGEND**
- CITY
  - ▭ PROPOSED FERC BOUNDARY
  - ▭ STUDY AREA (1/4 MILE FROM EXISTING FERC BOUNDARY OR RIVER)
  - HIGHWAY
  - MAIN ROAD
  - ▭ TOWNSHIP/RANGE
  - ▭ SECTION
  - STREAM
  - ▭ LAKE OR RESERVOIR
- KLAMATH COUNTY**
- ▭ EXCLUSIVE FARM USE
  - ▭ FORESTRY
  - ▭ FORESTRY/RANGE
  - ▭ NON-RESOURCE
  - ▭ INDUSTRIAL
  - ▭ RURAL RESIDENTIAL
  - ▭ SUBURBAN RESIDENTIAL
  - ▭ PLANNED UNIT DEVELOPMENT
  - ▭ COMMERCIAL
  - ▭ RECREATION COMMERCIAL
  - ▭ TRANSPORTATION COMMERCIAL
  - ▭ NO DATA AVAILABLE
- SISKIYOU COUNTY**
- ▭ PRIME AGRICULTURE
  - ▭ NON-PRIME AGRICULTURE
  - ▭ TIMBERLAND PRODUCTION DISTRICT
  - ▭ RURAL RESIDENTIAL AGRICULTURE
  - ▭ PLANNED DEVELOPMENT
  - ▭ NEIGHBORHOOD COMMERCIAL
  - ▭ TOWN CENTER
  - ▭ NO DATA AVAILABLE

ZONING CLASSIFICATIONS HAVE BEEN GENERALIZED. MORE DETAILED ZONING INFORMATION IS AVAILABLE FROM THE RELEVANT JURISDICTIONS.

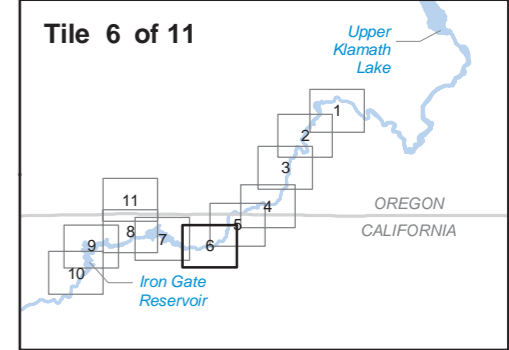
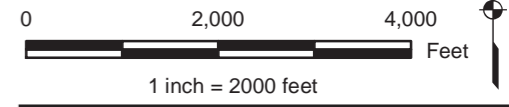


**Klamath Hydroelectric Project**  
**Figure E8.1-2 (5 of 11)**  
**Zoning**



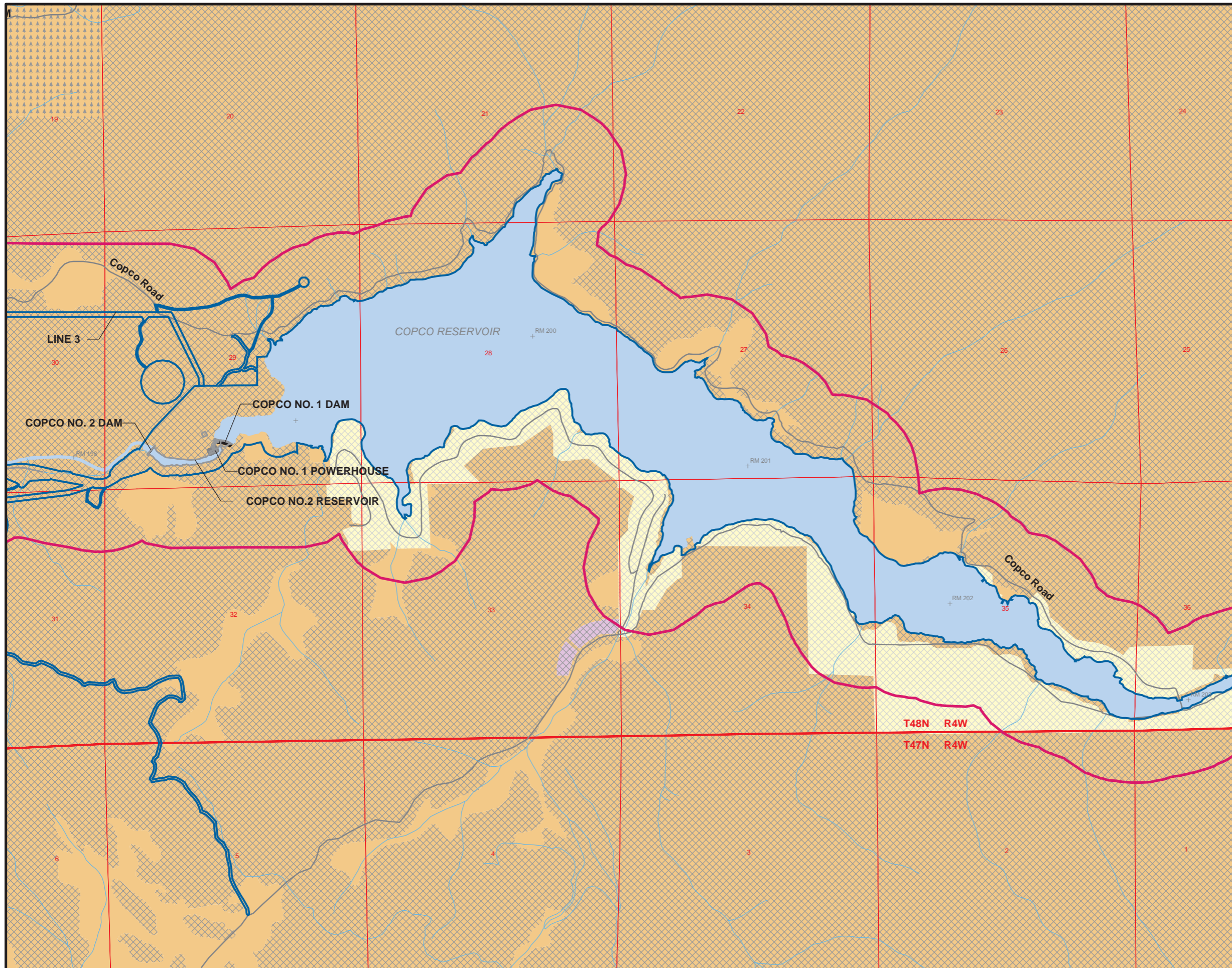
- LEGEND**
- CITY
  - ▭ PROPOSED FERC BOUNDARY
  - ▭ STUDY AREA (1/4 MILE FROM EXISTING FERC BOUNDARY OR RIVER)
  - HIGHWAY
  - MAIN ROAD
  - ▭ TOWNSHIP/RANGE
  - ▭ SECTION
  - STREAM
  - ▭ LAKE OR RESERVOIR
- KLAMATH COUNTY**
- ▭ EXCLUSIVE FARM USE
  - ▭ FORESTRY
  - ▭ FORESTRY/RANGE
  - ▭ NON-RESOURCE
  - ▭ INDUSTRIAL
  - ▭ RURAL RESIDENTIAL
  - ▭ SUBURBAN RESIDENTIAL
  - ▭ PLANNED UNIT DEVELOPMENT
  - ▭ COMMERCIAL
  - ▭ RECREATION COMMERCIAL
  - ▭ TRANSPORTATION COMMERCIAL
  - ▭ NO DATA AVAILABLE
- SISKIYOU COUNTY**
- ▭ PRIME AGRICULTURE
  - ▭ NON-PRIME AGRICULTURE
  - ▭ TIMBERLAND PRODUCTION DISTRICT
  - ▭ RURAL RESIDENTIAL AGRICULTURE
  - ▭ PLANNED DEVELOPMENT
  - ▭ NEIGHBORHOOD COMMERCIAL
  - ▭ TOWN CENTER
  - ▭ NO DATA AVAILABLE

ZONING CLASSIFICATIONS HAVE BEEN GENERALIZED. MORE DETAILED ZONING INFORMATION IS AVAILABLE FROM THE RELEVANT JURISDICTIONS.



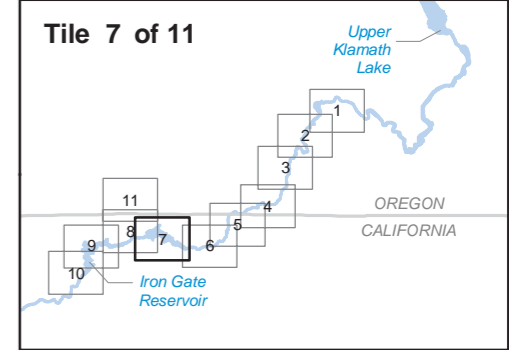
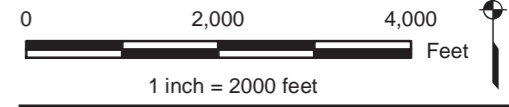
**Klamath Hydroelectric Project**

**Figure E8.1-2 (6 of 11)**  
Zoning



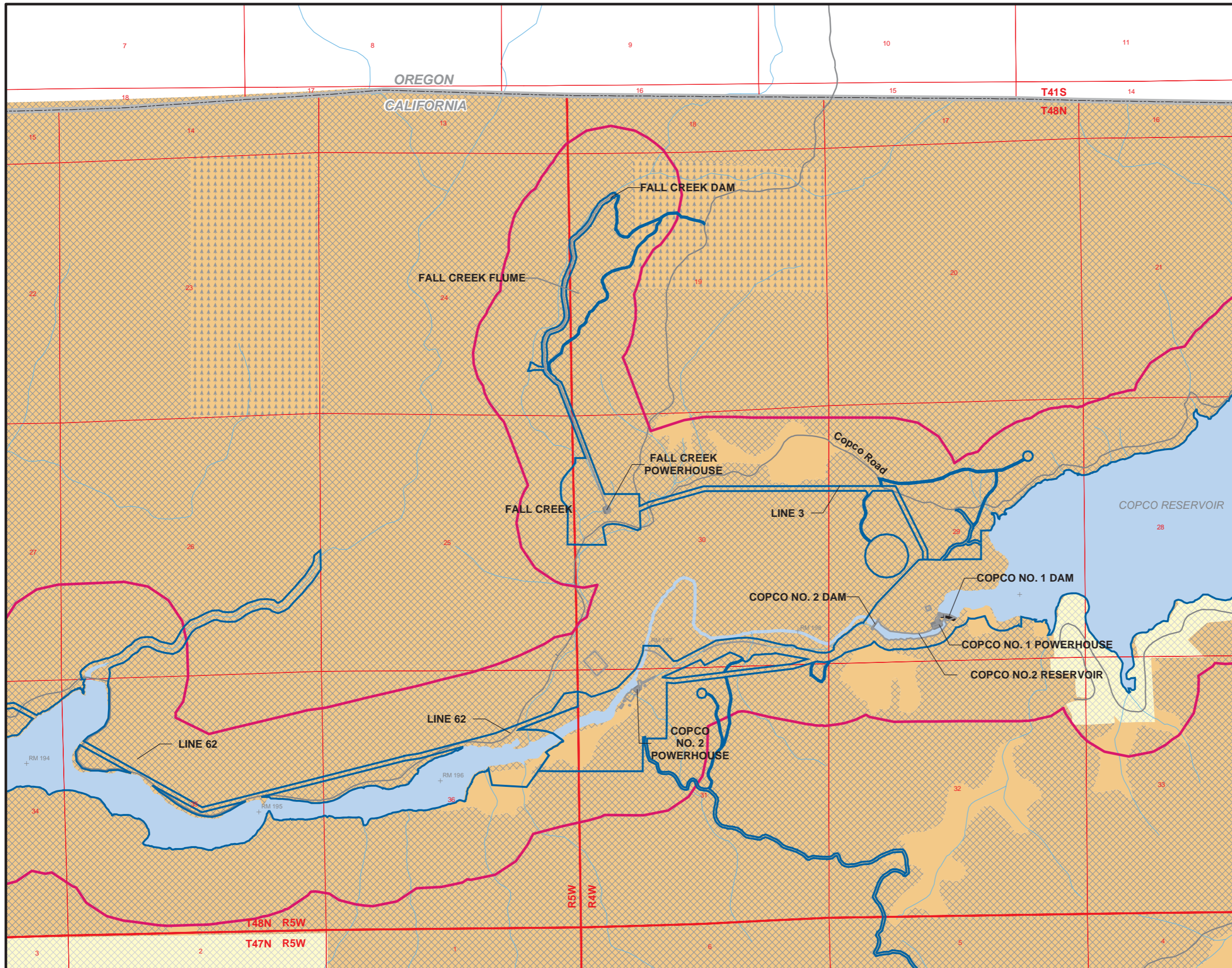
- LEGEND**
- CITY
  - ▭ PROPOSED FERC BOUNDARY
  - ▭ STUDY AREA (1/4 MILE FROM EXISTING FERC BOUNDARY OR RIVER)
  - HIGHWAY
  - MAIN ROAD
  - ▭ TOWNSHIP/RANGE
  - ▭ SECTION
  - STREAM
  - ▭ LAKE OR RESERVOIR
- KLAMATH COUNTY**
- ▭ EXCLUSIVE FARM USE
  - ▭ FORESTRY
  - ▭ FORESTRY/RANGE
  - ▭ NON-RESOURCE
  - ▭ INDUSTRIAL
  - ▭ RURAL RESIDENTIAL
  - ▭ SUBURBAN RESIDENTIAL
  - ▭ PLANNED UNIT DEVELOPMENT
  - ▭ COMMERCIAL
  - ▭ RECREATION COMMERCIAL
  - ▭ TRANSPORTATION COMMERCIAL
  - ▭ NO DATA AVAILABLE
- SISKIYOU COUNTY**
- ▭ PRIME AGRICULTURE
  - ▭ NON-PRIME AGRICULTURE
  - ▭ TIMBERLAND PRODUCTION DISTRICT
  - ▭ RURAL RESIDENTIAL AGRICULTURE
  - ▭ PLANNED DEVELOPMENT
  - ▭ NEIGHBORHOOD COMMERCIAL
  - ▭ TOWN CENTER
  - ▭ NO DATA AVAILABLE

ZONING CLASSIFICATIONS HAVE BEEN GENERALIZED. MORE DETAILED ZONING INFORMATION IS AVAILABLE FROM THE RELEVANT JURISDICTIONS.



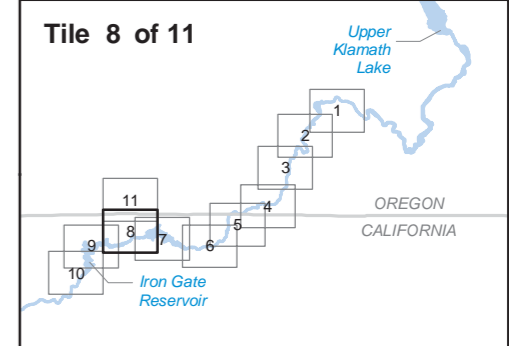
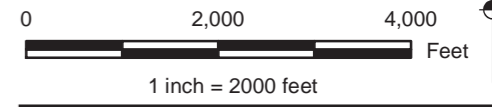
**Klamath Hydroelectric Project**

**Figure E8.1-2 (7 of 11)**  
Zoning



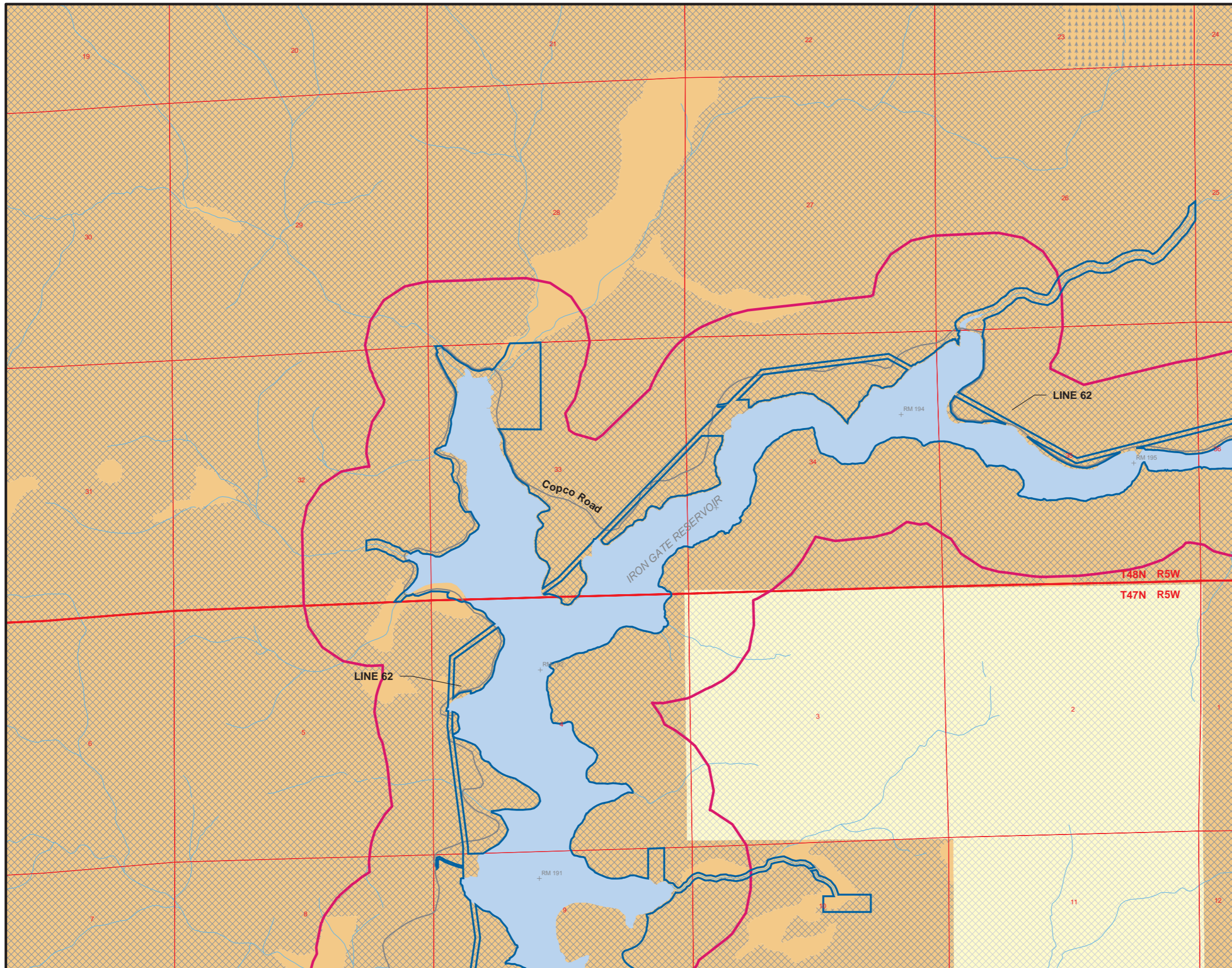
- LEGEND**
- CITY
  - ▭ PROPOSED FERC BOUNDARY
  - ▭ STUDY AREA (1/4 MILE FROM EXISTING FERC BOUNDARY OR RIVER)
  - HIGHWAY
  - MAIN ROAD
  - ▭ TOWNSHIP/RANGE
  - ▭ SECTION
  - STREAM
  - ▭ LAKE OR RESERVOIR
- KLAMATH COUNTY**
- ▭ EXCLUSIVE FARM USE
  - ▭ FORESTRY
  - ▭ FORESTRY/RANGE
  - ▭ NON-RESOURCE
  - ▭ INDUSTRIAL
  - ▭ RURAL RESIDENTIAL
  - ▭ SUBURBAN RESIDENTIAL
  - ▭ PLANNED UNIT DEVELOPMENT
  - ▭ COMMERCIAL
  - ▭ RECREATION COMMERCIAL
  - ▭ TRANSPORTATION COMMERCIAL
  - ▭ NO DATA AVAILABLE
- SISKIYOU COUNTY**
- ▭ PRIME AGRICULTURE
  - ▭ NON-PRIME AGRICULTURE
  - ▭ TIMBERLAND PRODUCTION DISTRICT
  - ▭ RURAL RESIDENTIAL AGRICULTURE
  - ▭ PLANNED DEVELOPMENT
  - ▭ NEIGHBORHOOD COMMERCIAL
  - ▭ TOWN CENTER
  - ▭ NO DATA AVAILABLE

ZONING CLASSIFICATIONS HAVE BEEN GENERALIZED. MORE DETAILED ZONING INFORMATION IS AVAILABLE FROM THE RELEVANT JURISDICTIONS.



**Klamath Hydroelectric Project**

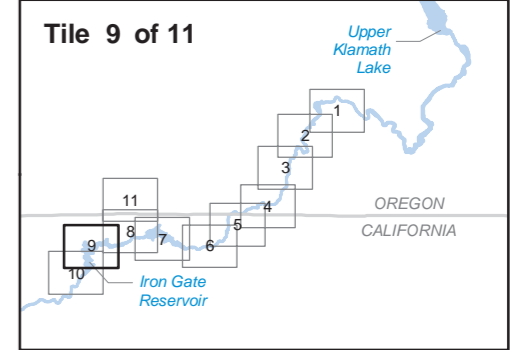
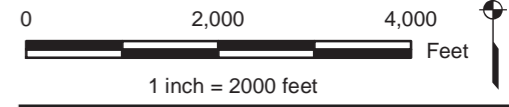
**Figure E8.1-2 (8 of 11)**  
Zoning



**LEGEND**

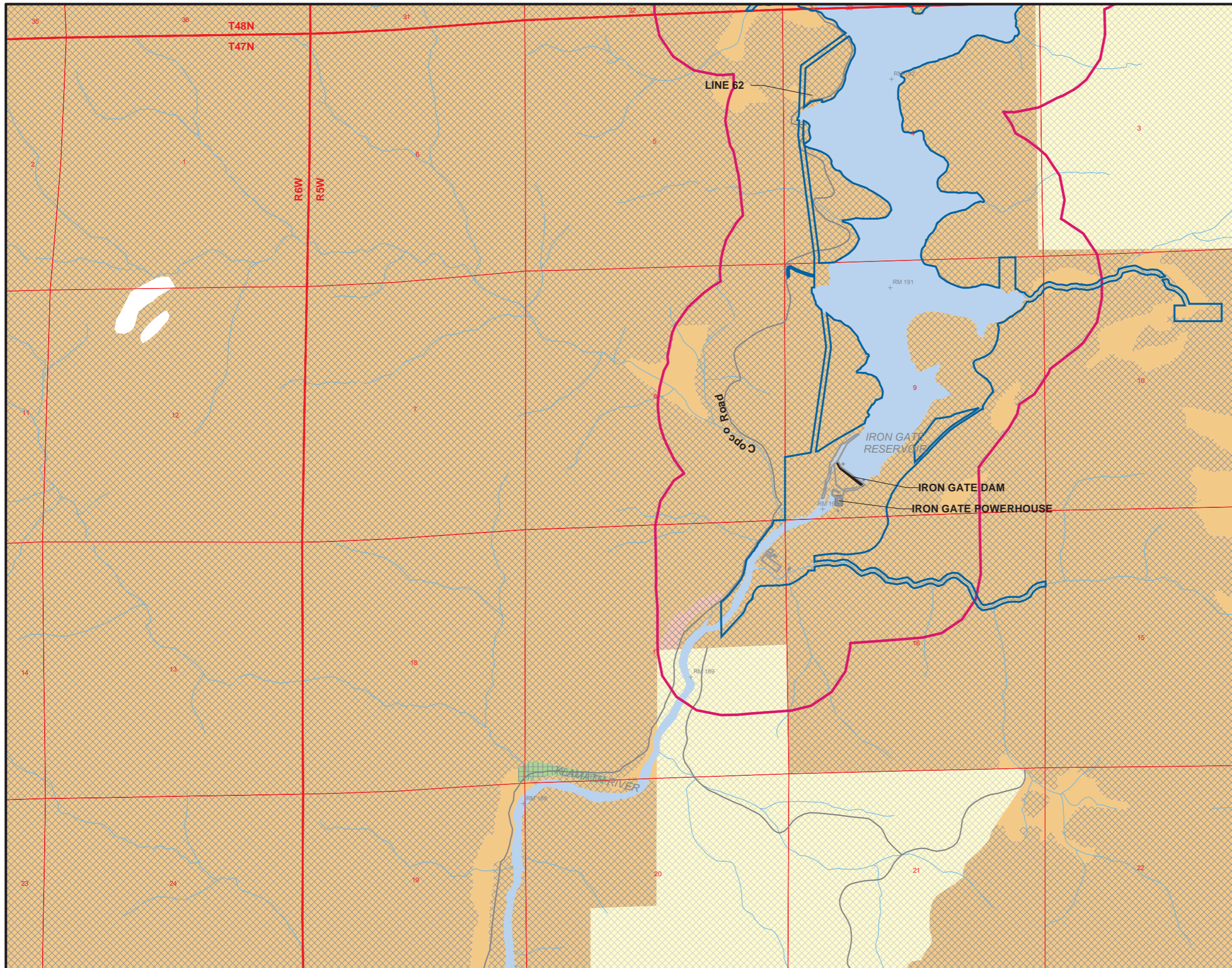
- CITY
- ▭ PROPOSED FERC BOUNDARY
- ▭ STUDY AREA (1/4 MILE FROM EXISTING FERC BOUNDARY OR RIVER)
- HIGHWAY
- MAIN ROAD
- ▭ TOWNSHIP/RANGE
- ▭ SECTION
- STREAM
- ▭ LAKE OR RESERVOIR
- KLAMATH COUNTY**
- ▭ EXCLUSIVE FARM USE
- ▭ FORESTRY
- ▭ FORESTRY/RANGE
- ▭ NON-RESOURCE
- ▭ INDUSTRIAL
- ▭ RURAL RESIDENTIAL
- ▭ SUBURBAN RESIDENTIAL
- ▭ PLANNED UNIT DEVELOPMENT
- ▭ COMMERCIAL
- ▭ RECREATION COMMERCIAL
- ▭ TRANSPORTATION COMMERCIAL
- ▭ NO DATA AVAILABLE
- SISKIYOU COUNTY**
- ▭ PRIME AGRICULTURE
- ▭ NON-PRIME AGRICULTURE
- ▭ TIMBERLAND PRODUCTION DISTRICT
- ▭ RURAL RESIDENTIAL AGRICULTURE
- ▭ PLANNED DEVELOPMENT
- ▭ NEIGHBORHOOD COMMERCIAL
- ▭ TOWN CENTER
- ▭ NO DATA AVAILABLE

ZONING CLASSIFICATIONS HAVE BEEN GENERALIZED. MORE DETAILED ZONING INFORMATION IS AVAILABLE FROM THE RELEVANT JURISDICTIONS.



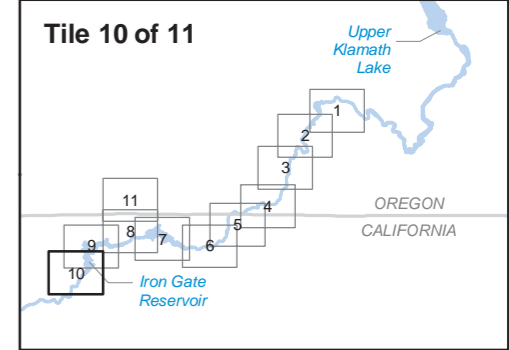
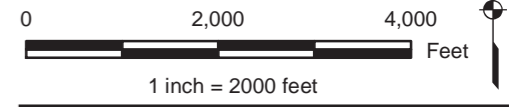
**Klamath Hydroelectric Project**

**Figure E8.1-2 (9 of 11)**  
Zoning



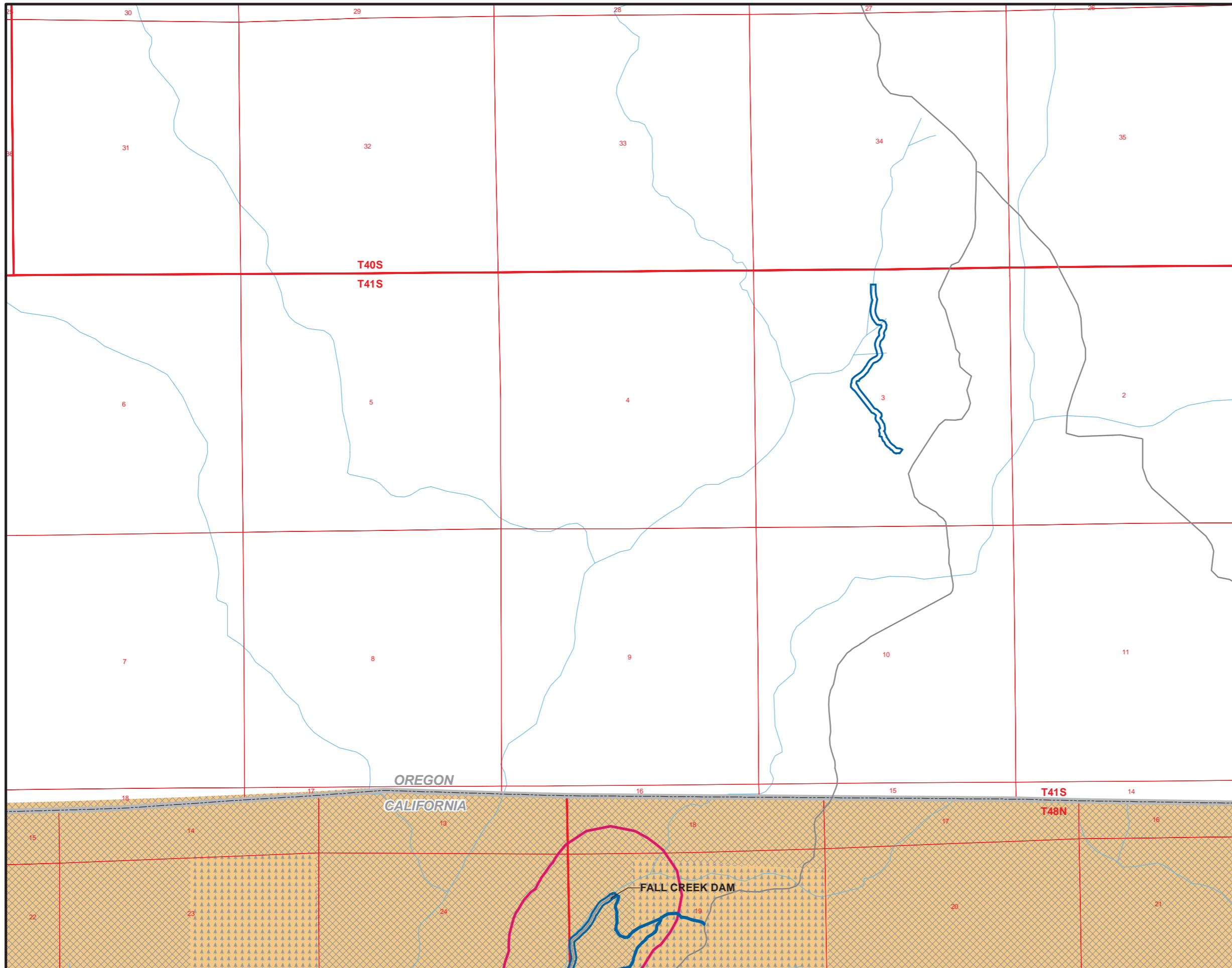
- LEGEND**
- CITY
  - ▭ PROPOSED FERC BOUNDARY
  - ▭ STUDY AREA (1/4 MILE FROM EXISTING FERC BOUNDARY OR RIVER)
  - HIGHWAY
  - MAIN ROAD
  - ▭ TOWNSHIP/RANGE
  - ▭ SECTION
  - STREAM
  - ▭ LAKE OR RESERVOIR
- KLAMATH COUNTY**
- ▭ EXCLUSIVE FARM USE
  - ▭ FORESTRY
  - ▭ FORESTRY/RANGE
  - ▭ NON-RESOURCE
  - ▭ INDUSTRIAL
  - ▭ RURAL RESIDENTIAL
  - ▭ SUBURBAN RESIDENTIAL
  - ▭ PLANNED UNIT DEVELOPMENT
  - ▭ COMMERCIAL
  - ▭ RECREATION COMMERCIAL
  - ▭ TRANSPORTATION COMMERCIAL
  - ▭ NO DATA AVAILABLE
- SISKIYOU COUNTY**
- ▭ PRIME AGRICULTURE
  - ▭ NON-PRIME AGRICULTURE
  - ▭ TIMBERLAND PRODUCTION DISTRICT
  - ▭ RURAL RESIDENTIAL AGRICULTURE
  - ▭ PLANNED DEVELOPMENT
  - ▭ NEIGHBORHOOD COMMERCIAL
  - ▭ TOWN CENTER
  - ▭ NO DATA AVAILABLE

ZONING CLASSIFICATIONS HAVE BEEN GENERALIZED. MORE DETAILED ZONING INFORMATION IS AVAILABLE FROM THE RELEVANT JURISDICTIONS.



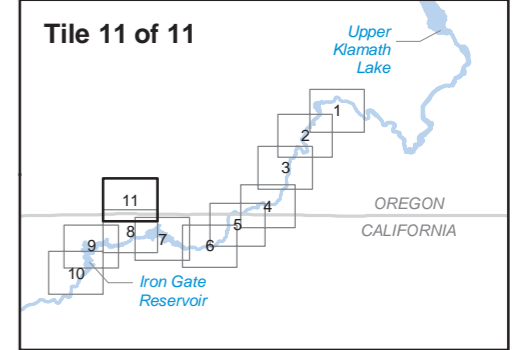
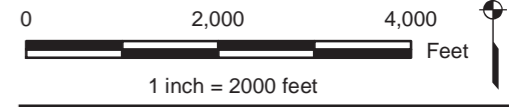
**Klamath Hydroelectric Project**

**Figure E8.1-2 (10 of 11)**  
Zoning



- LEGEND**
- CITY
  - ▭ PROPOSED FERC BOUNDARY
  - ▭ STUDY AREA (1/4 MILE FROM EXISTING FERC BOUNDARY OR RIVER)
  - HIGHWAY
  - MAIN ROAD
  - ▭ TOWNSHIP/RANGE
  - ▭ SECTION
  - STREAM
  - ▭ LAKE OR RESERVOIR
- KLAMATH COUNTY**
- ▭ EXCLUSIVE FARM USE
  - ▭ FORESTRY
  - ▭ FORESTRY/RANGE
  - ▭ NON-RESOURCE
  - ▭ INDUSTRIAL
  - ▭ RURAL RESIDENTIAL
  - ▭ SUBURBAN RESIDENTIAL
  - ▭ PLANNED UNIT DEVELOPMENT
  - ▭ COMMERCIAL
  - ▭ RECREATION COMMERCIAL
  - ▭ TRANSPORTATION COMMERCIAL
  - ▭ NO DATA AVAILABLE
- SISKIYOU COUNTY**
- ▭ PRIME AGRICULTURE
  - ▭ NON-PRIME AGRICULTURE
  - ▭ TIMBERLAND PRODUCTION DISTRICT
  - ▭ RURAL RESIDENTIAL AGRICULTURE
  - ▭ PLANNED DEVELOPMENT
  - ▭ NEIGHBORHOOD COMMERCIAL
  - ▭ TOWN CENTER
  - ▭ NO DATA AVAILABLE

ZONING CLASSIFICATIONS HAVE BEEN GENERALIZED. MORE DETAILED ZONING INFORMATION IS AVAILABLE FROM THE RELEVANT JURISDICTIONS.



**Klamath Hydroelectric Project**  
**Figure E8.1-2 (11 of 11)**  
 Zoning