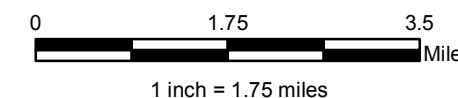
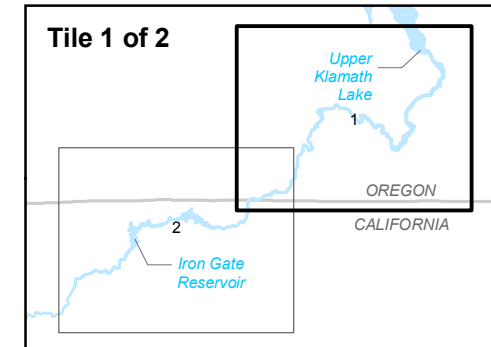


**LEGEND**

- MOLLUSKS FOUND
- MOLLUSKS NOT FOUND
- ⊕ NOT SURVEYED
- PRIMARY STUDY AREA
- SECONDARY STUDY AREA
- HIGHWAY
- TRANSMISSION LINE
- ▭ TOWNSHIP/RANGE
- STREAM
- OPEN WATER

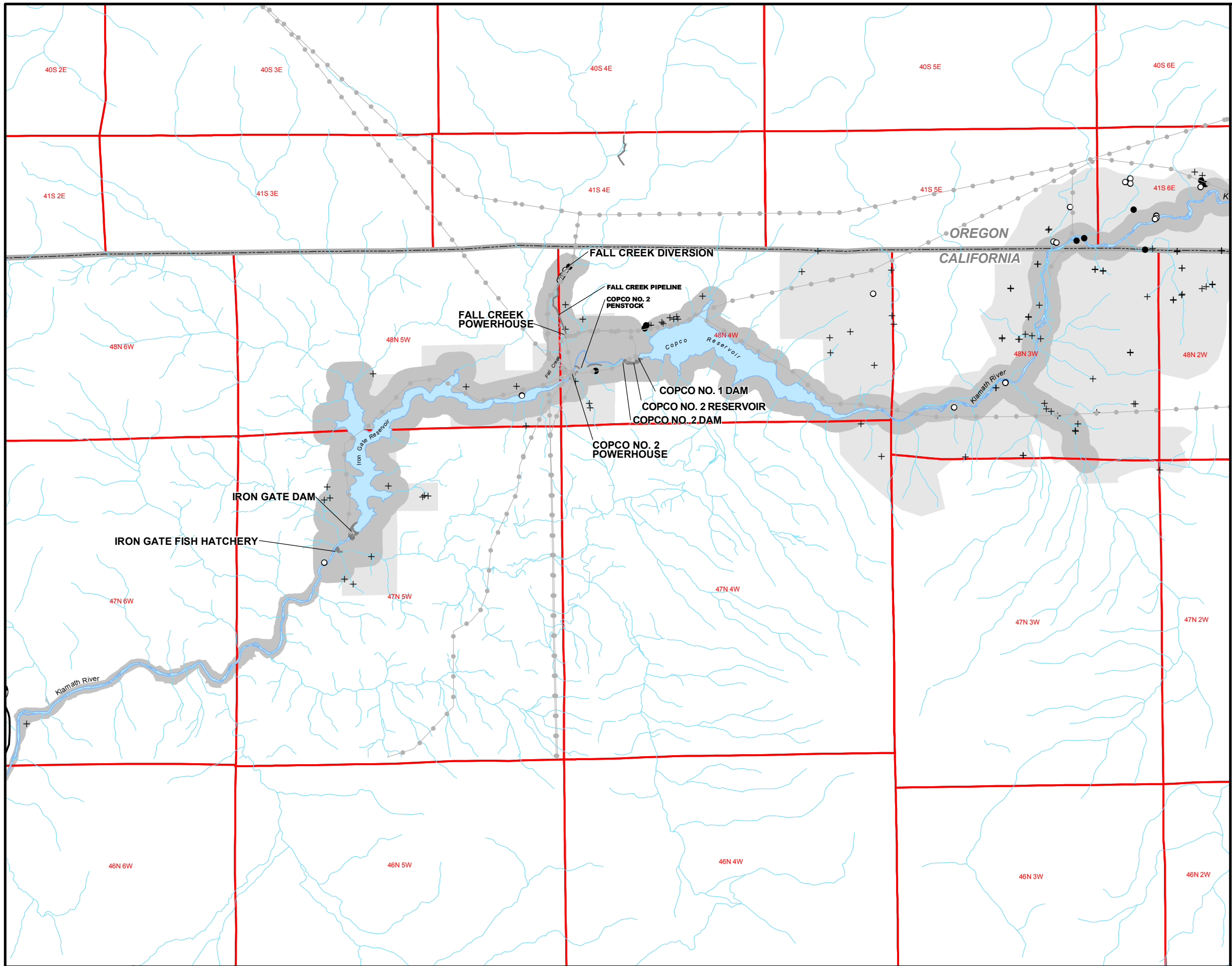


Tile 1 of 2



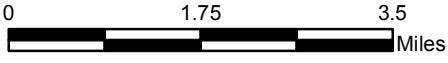
**Klamath Hydroelectric Project**

**Figure 10.7-1 (1 of 2)**  
Spring Mollusk Habitat Inventory

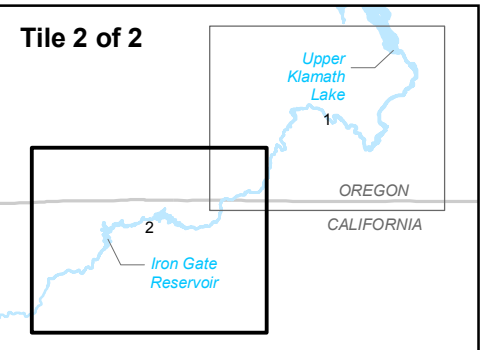


**LEGEND**

- MOLLUSKS FOUND
- MOLLUSKS NOT FOUND
- + NOT SURVEYED
- PRIMARY STUDY AREA
- SECONDARY STUDY AREA
- HIGHWAY
- - - TRANSMISSION LINE
- ▭ TOWNSHIP/RANGE
- STREAM
- OPEN WATER



1 inch = 1.75 miles



**Klamath Hydroelectric Project**

**Figure 10.7-1 (2 of 2)**  
Spring Mollusk Habitat Inventory