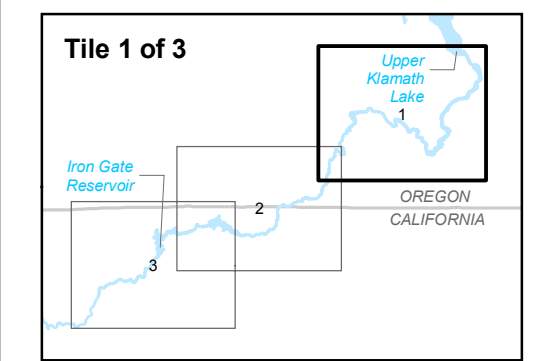
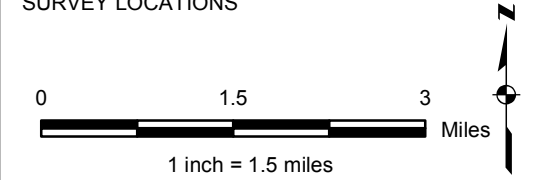


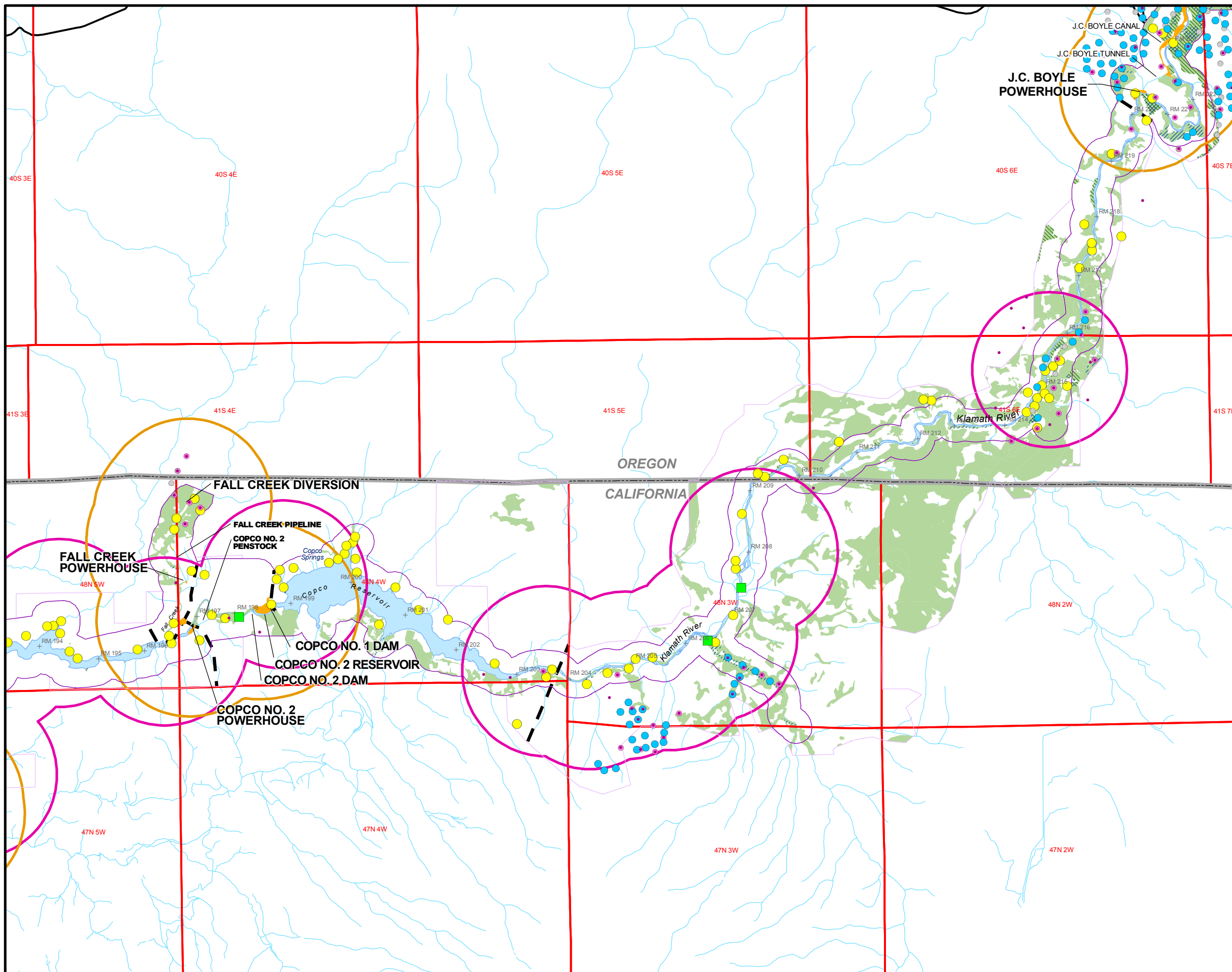
- LEGEND**
- 2002 NORTHERN SPOTTED OWL CALLING STATIONS
 - 2003 GREAT GRAY OWL CALLING STATION
 - 2003 NORTHERN SPOTTED OWL CALLING STATION
 - 2003 GREAT GRAY OWL & NORTHERN SPOTTED OWL CALLING STATION
 - 2002 NORTHERN GOSHAWK CALLING STATION
 - KBO ROI SURVEY LOCATIONS
 - WILDLIFE SURVEY LOCATIONS
 - ▭ PROJECT FACILITY BUFFER AREA*
 - ▭ PACIFICORP RECREATION SITE BUFFER AREA*
 - ▨ GREAT GRAY OWL-SUITABLE HABITAT
 - ▨ NORTHERN GOSHAWK-SUITABLE HABITAT
 - ▨ NORTHERN SPOTTED OWL-SUITABLE HABITAT
 - ▭ PROJECT FACILITY SURVEY
 - ▭ PRIMARY STUDY AREA
 - ▭ SECONDARY STUDY AREA
 - ▬ PROJECT SECTION BOUNDARY
 - ▬ HIGHWAY
 - ▭ TOWNSHIP/RANGE
 - ▬ STREAM
 - ▭ OPEN WATER

*BUFFER DISTANCES: 1.3 MILES IN CALIFORNIA
1.2 MILES IN OREGON

SEE FIGURE 4.4-1 FOR TES AMPHIBIAN SURVEY LOCATIONS



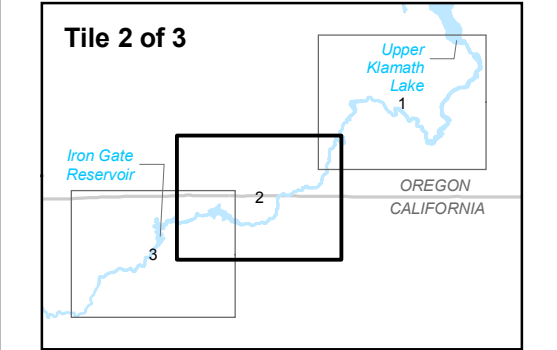
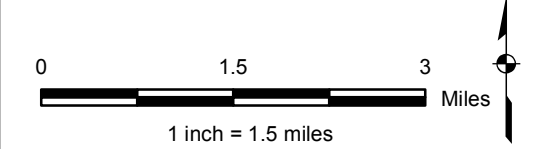
Klamath Hydroelectric Project
Figure 5.4-1 (1 of 3)
TES Wildlife Survey Locations



- LEGEND**
- 2002 NORTHERN SPOTTED OWL CALLING STATIONS
 - 2003 GREAT GRAY OWL CALLING STATION
 - 2003 NORTHERN SPOTTED OWL CALLING STATION
 - 2003 GREAT GRAY OWL & NORTHERN SPOTTED OWL CALLING STATION
 - 2002 NORTHERN GOSHAWK CALLING STATION
 - KBO ROI SURVEY LOCATIONS
 - WILDLIFE SURVEY LOCATIONS
 - ▭ PROJECT FACILITY BUFFER AREA*
 - ▭ PACIFICORP RECREATION SITE BUFFER AREA*
 - ▨ GREAT GRAY OWL-SUITABLE HABITAT
 - ▨ NORTHERN GOSHAWK-SUITABLE HABITAT
 - NORTHERN SPOTTED OWL-SUITABLE HABITAT
 - ▭ PROJECT FACILITY SURVEY
 - ▭ PRIMARY STUDY AREA
 - ▭ SECONDARY STUDY AREA
 - PROJECT SECTION BOUNDARY
 - HIGHWAY
 - ▭ TOWNSHIP/RANGE
 - STREAM
 - OPEN WATER

*BUFFER DISTANCES: 1.3 MILES IN CALIFORNIA
1.2 MILES IN OREGON

SEE FIGURE 4.4-1 FOR TES AMPHIBIAN SURVEY LOCATIONS



Klamath Hydroelectric Project
Figure 5.4-1 (2 of 3)
TES Wildlife Survey Locations

