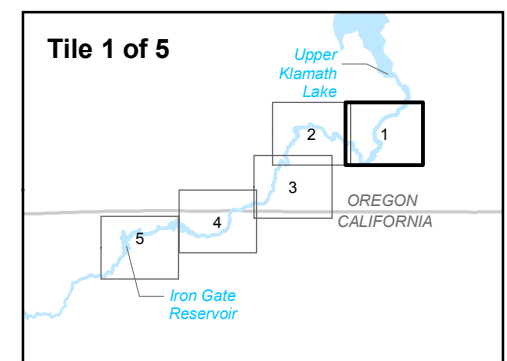
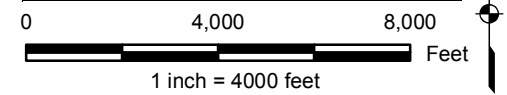


LEGEND

- TES PLANTS
- GENERALIZED VEGETATION CATEGORIES**
- CONIFER FOREST
- MIXED CONIFER/DECIDUOUS FOREST
- DECIDUOUS FOREST
- UPLAND SHRUB
- GRASSLAND
- AGRICULTURE
- RIPARIAN
- PALUSTRINE WETLAND
- OPEN WATER
- EXPOSED ROCK/ROCK TALUS
- DEVELOPED/DISTURBED
- PRIMARY STUDY AREA
- SECONDARY STUDY AREA
- PROJECT SECTION BOUNDARY
- HIGHWAY
- ROAD
- TRANSMISSION LINE
- STREAM

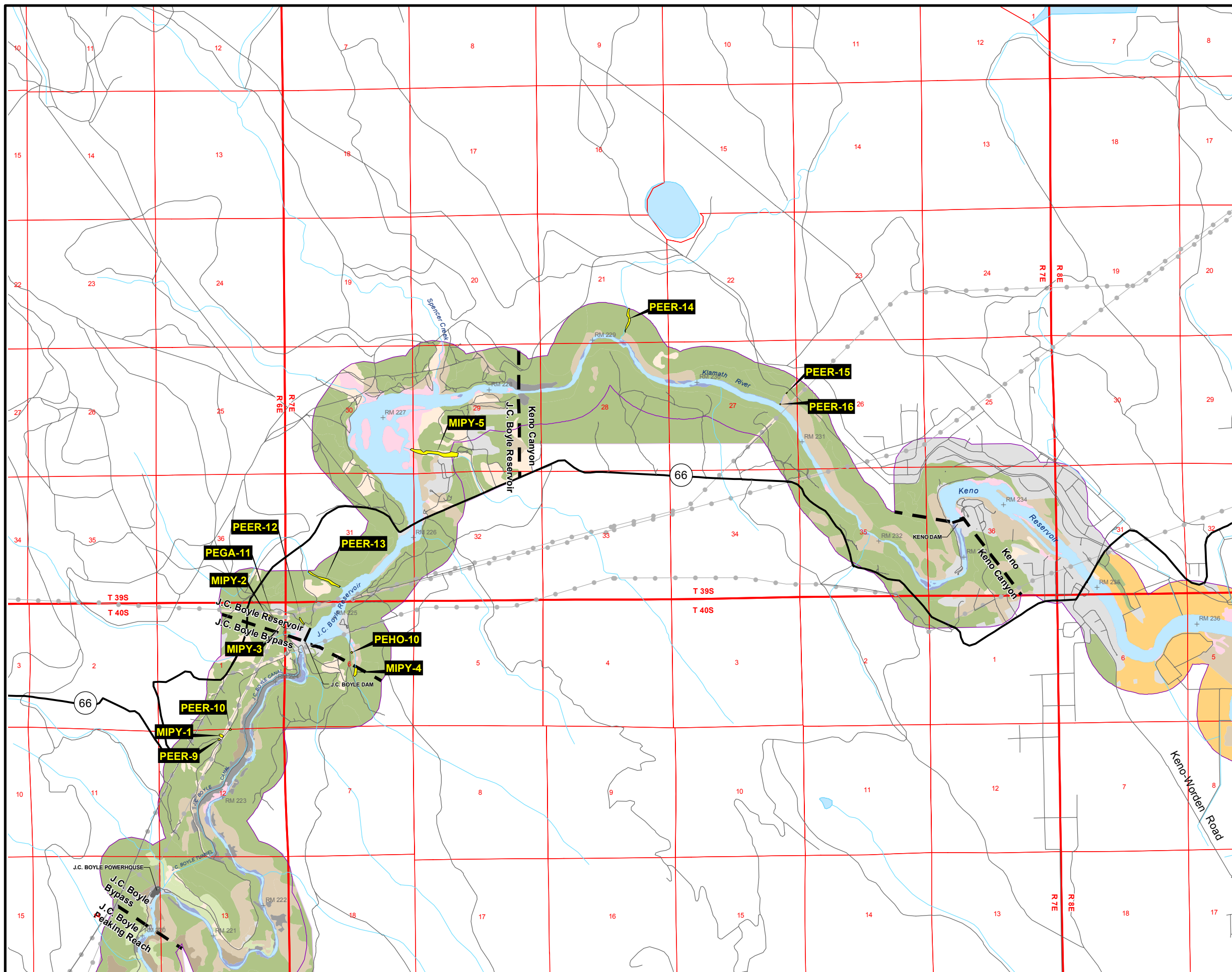
LABEL ¹	SCIENTIFIC NAME	COMMON NAME
ASAP	<i>Astragalus applegatei</i>	Applegate's milkvetch
CAGR	<i>Calochortus greenii</i>	Green's mariposa lily
CYMO	<i>Oryzopodium montanum</i>	Mountain lady's slipper
HEBO	<i>Helianthus bolanderi</i>	Bolander's sunflower
HECU	<i>Heliotropium curvassavicum</i>	Salt heliotrope
LIFLB	<i>Limnanthes floccosa</i> ssp. <i>bellingera</i>	Bellinger's meadow foam
MIPY	<i>Mirulus pygmaeus</i>	Egg lake monkeyflower
PEER	<i>Perideridia erythrorhiza</i> ²	Red-root yampah/ Gairdner's yampah
PEHO	<i>Perideridia howellii</i>	Howell's yampah-root
ROCO	<i>Rorippa columbiana</i>	Columbia yellow cress
SADOI	<i>Savia doriai</i> var. <i>incana</i>	Fleshy sage
SCPE	<i>Scirpus pendulus</i>	Pendulus bulrush
SILE	<i>Silene lemmonii</i> ³	Lemmon's silene/ Campanulate catchfly
THBR	<i>Thelypodium brachycarpum</i>	Short-podded thelypod

1. Number at end of plot label is unique population identifier.
 2. The identification of red root yampah has not been confirmed at any of these locations (see Section 5.7.1.1). Specimens collected at four different sites were determined to be Gairdner's yampah; the site labels for these sites are PEGA (*Perideridia gairdneri*).
 3. Observed *Silene* specimens keyed to *Silene campanulatum* (see Section 5.7.1.1).



Klamath Hydroelectric Project

Figure 5.7-1 (1 of 5)
TES Plants

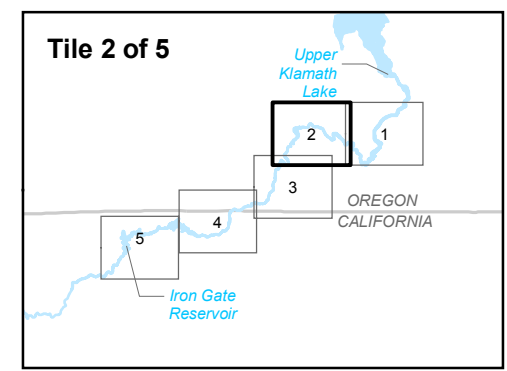


LEGEND

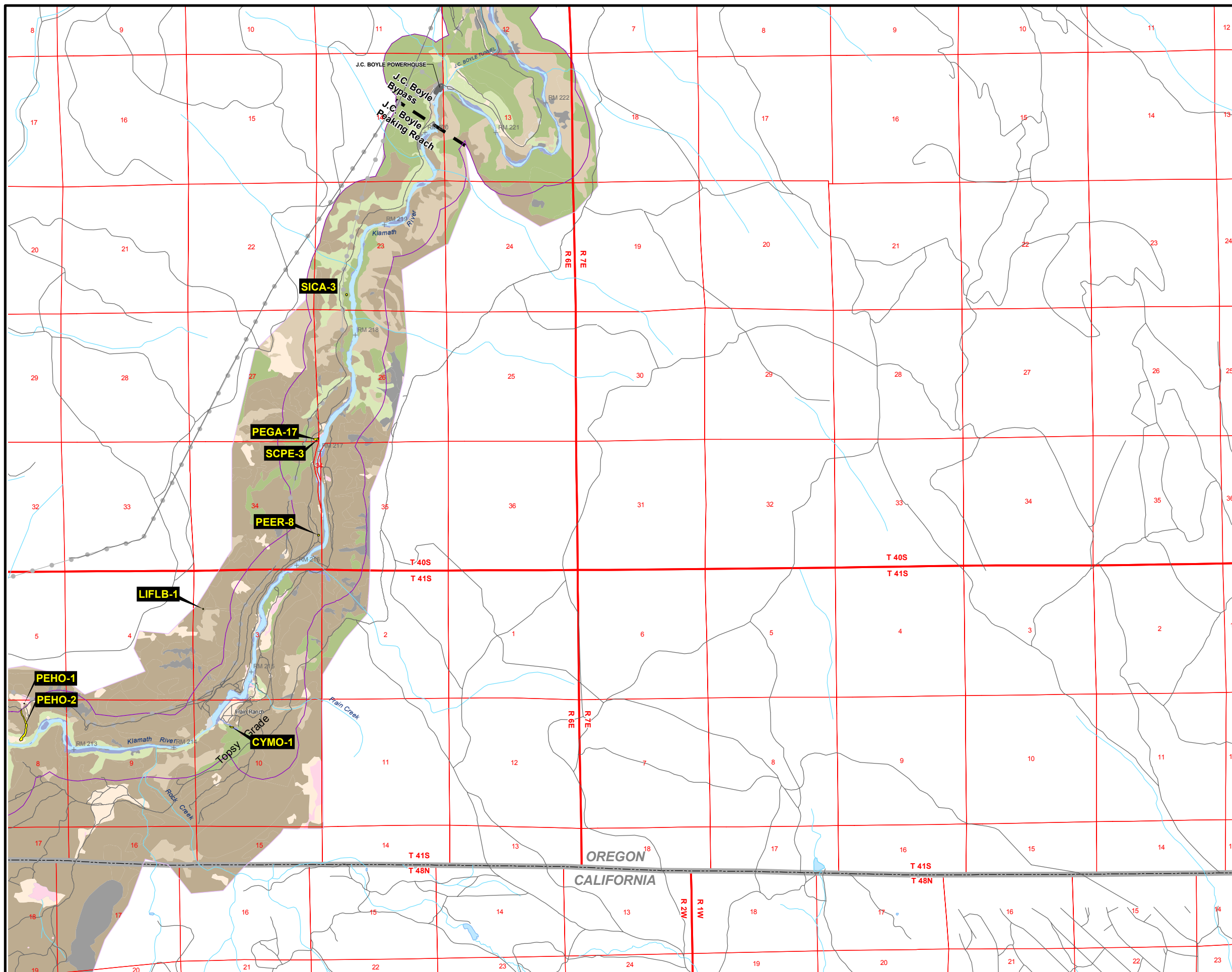
- TES PLANTS
- GENERALIZED VEGETATION CATEGORIES**
- CONIFER FOREST
- MIXED CONIFER/DECIDUOUS FOREST
- DECIDUOUS FOREST
- UPLAND SHRUB
- GRASSLAND
- AGRICULTURE
- RIPARIAN
- PALUSTRINE WETLAND
- OPEN WATER
- EXPOSED ROCK/ROCK TALUS
- DEVELOPED/DISTURBED
- PRIMARY STUDY AREA
- SECONDARY STUDY AREA
- PROJECT SECTION BOUNDARY
- HIGHWAY
- ROAD
- TRANSMISSION LINE
- STREAM

LABEL ¹	SCIENTIFIC NAME	COMMON NAME
ASAP	<i>Astragalus applegatei</i>	Applegate's milkvetch
CAGR	<i>Calochortus greenii</i>	Green's mariposa lily
CYMO	<i>Oxytripedium montanum</i>	Mountain lady's slipper
HEBO	<i>Helianthus bolanderi</i>	Bolander's sunflower
HECU	<i>Heliotropium curvassavicum</i>	Salt heliotrope
	<i>Limnanthes floccosa</i> ssp.	
LIFLB	<i>bellingera</i>	Bellinger's meadow foam
MIPY	<i>Mirulus pygmaeus</i>	Egg lake monkeyflower
PEER	<i>Perideridia erythrorhiza</i> ²	Red-root yampah/ Gairdner's yampah
PEHO	<i>Perideridia howellii</i>	Howell's yampah-root
ROCO	<i>Rorippa columbiana</i>	Columbia yellow cress
SADOI	<i>Savia doriai</i> var. <i>incana</i>	Fleshy sage
SCPE	<i>Scirpus pendulus</i>	Pendulus bulrush
SILE	<i>Silene lemmonii</i> ³	Lemmon's silene/ Campanulate catchfly
THBR	<i>Thelypodium brachycarpum</i>	Short-podded thelypod

1. Number at end of plot label is unique population identifier.
 2. The identification of red root yampah has not been confirmed at any of these locations (see Section 5.7.1.1). Specimens collected at four different sites were determined to be Gairdner's yampah; the site labels for these sites are PEGA (*Perideridia gairdneri*).
 3. Observed *Silene* specimens keyed to *Silene campanulatum* (see Section 5.7.1.1).



Klamath Hydroelectric Project
Figure 5.7-1 (2 of 5)
TES Plants

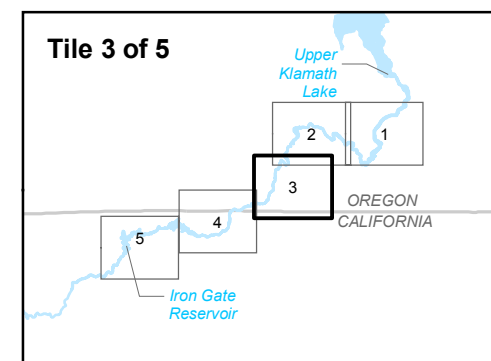
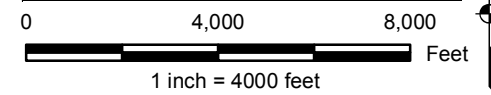


LEGEND

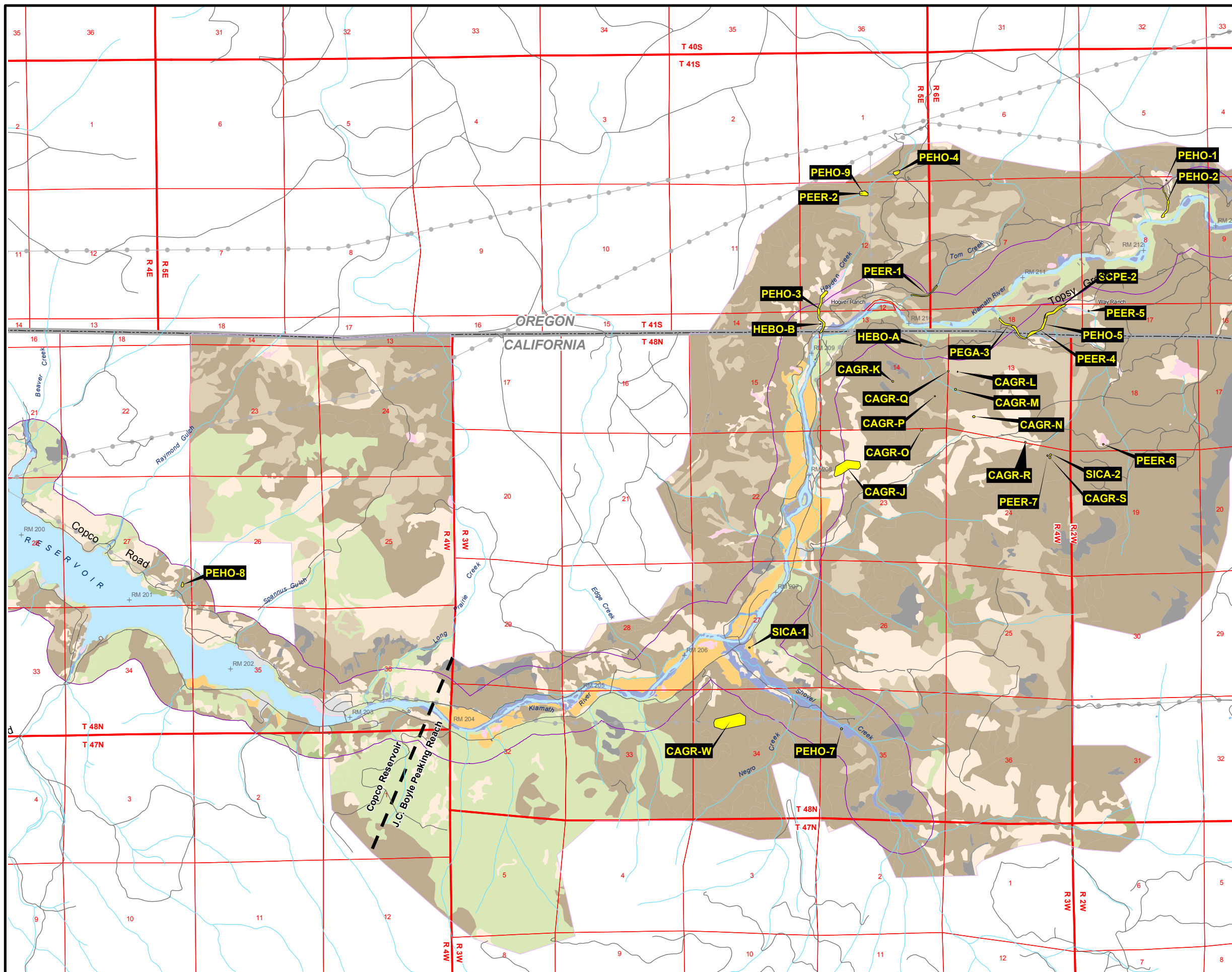
- TES PLANTS
- GENERALIZED VEGETATION CATEGORIES**
- CONIFER FOREST
- MIXED CONIFER/DECIDUOUS FOREST
- DECIDUOUS FOREST
- UPLAND SHRUB
- GRASSLAND
- AGRICULTURE
- RIPARIAN
- PALUSTRINE WETLAND
- OPEN WATER
- EXPOSED ROCK/ROCK TALUS
- DEVELOPED/DISTURBED
- PRIMARY STUDY AREA
- SECONDARY STUDY AREA
- PROJECT SECTION BOUNDARY
- HIGHWAY
- ROAD
- TRANSMISSION LINE
- STREAM

LABEL ¹	SCIENTIFIC NAME	COMMON NAME
ASAP	<i>Astragalus applegatei</i>	Applegate's milkvetch
CAGR	<i>Calochortus greenii</i>	Green's mariposa lily
CYMO	<i>Oryzidium montanum</i>	Mountain lady's slipper
HEBO	<i>Helianthus bolanderi</i>	Bolander's sunflower
HECU	<i>Heliotropium curvassavicum</i>	Salt heliotrope
	<i>Limnanthes floccosa</i> ssp.	
LIFLB	<i>bellingera</i>	Bellinger's meadow foam
MIPY	<i>Mirulus pygmaeus</i>	Egg lake monkeyflower
PEER	<i>Perideridia erythrochiza</i> ²	Red-root yampah/ Gairdner's yampah
PEHO	<i>Perideridia howellii</i>	Howell's yampah-root
ROCO	<i>Rorippa columbiana</i>	Columbia yellow cress
SADOI	<i>Savia doriai</i> var. <i>incana</i>	Fleshy sage
SCPE	<i>Scirpus pendulus</i>	Pendulus bulrush
SILE	<i>Silene lemmonii</i> ³	Lemmon's silene/ Campanulate catchfly
THBR	<i>Thelypodium brachycarpum</i>	Short-podded thelypod

1. Number at end of plot label is unique population identifier.
 2. The identification of red root yampah has not been confirmed at any of these locations (see Section 5.7.1.1). Specimens collected at four different sites were determined to be Gairdner's yampah; the site labels for these sites are PEGA (*Perideridia gairdneri*).
 3. Observed *Silene* specimens keyed to *Silene campanulatum* (see Section 5.7.1.1).



Klamath Hydroelectric Project
Figure 5.7-1 (3 of 5)
TES Plants

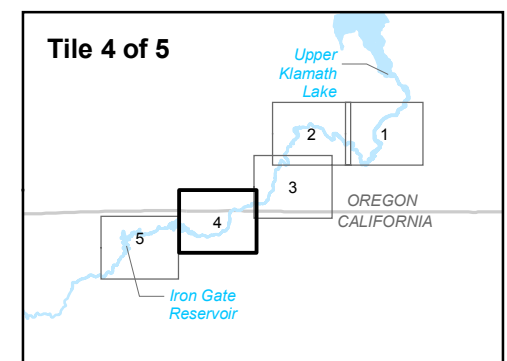
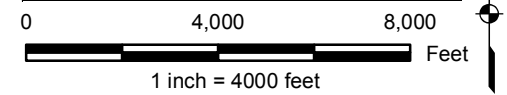


LEGEND

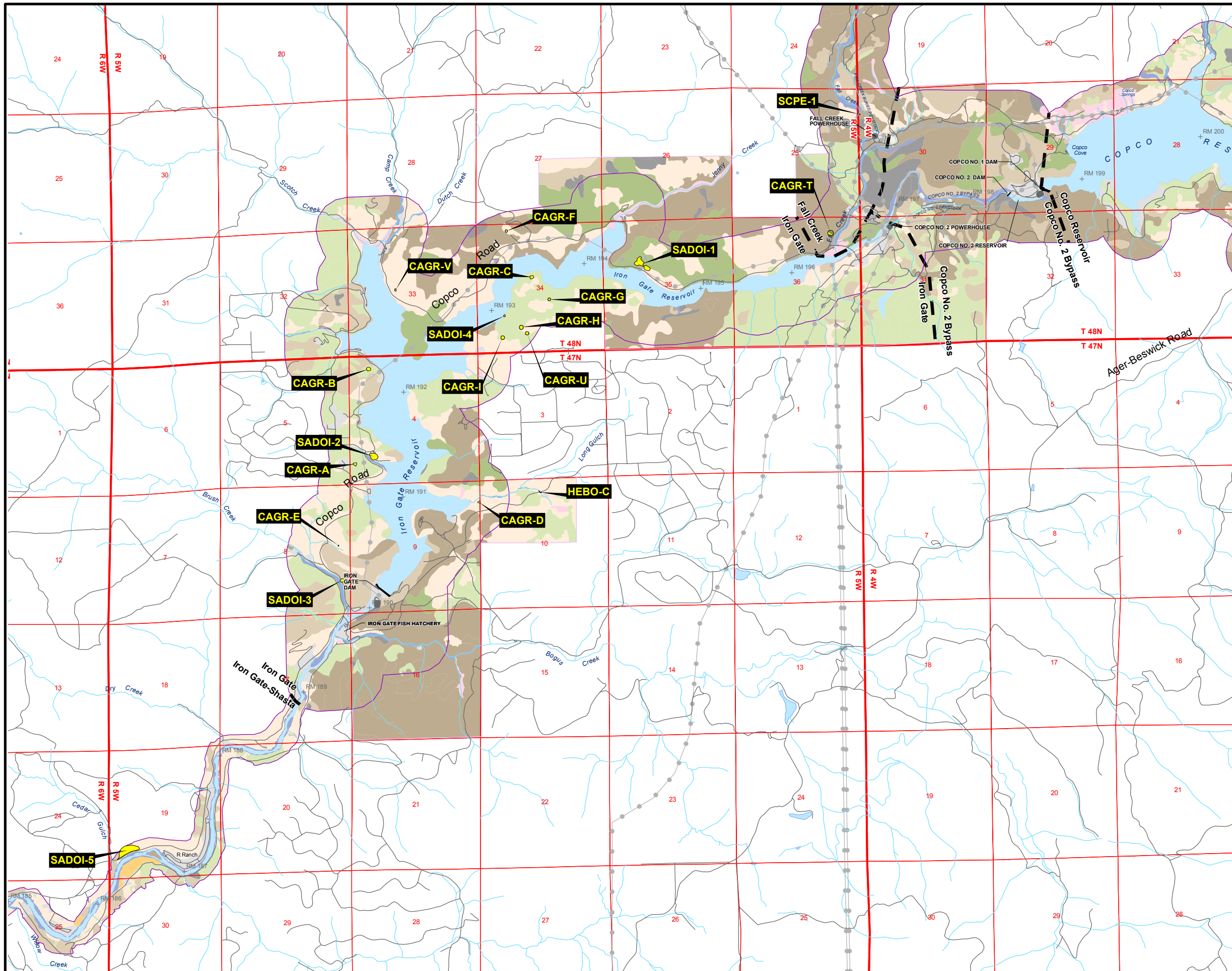
- TES PLANTS
- GENERALIZED VEGETATION CATEGORIES**
- CONIFER FOREST
- MIXED CONIFER/DECIDUOUS FOREST
- DECIDUOUS FOREST
- UPLAND SHRUB
- GRASSLAND
- AGRICULTURE
- RIPARIAN
- PALUSTRINE WETLAND
- OPEN WATER
- EXPOSED ROCK/ROCK TALUS
- DEVELOPED/DISTURBED
- PRIMARY STUDY AREA
- SECONDARY STUDY AREA
- PROJECT SECTION BOUNDARY
- HIGHWAY
- ROAD
- TRANSMISSION LINE
- STREAM

LABEL ¹	SCIENTIFIC NAME	COMMON NAME
ASAP	<i>Astragalus applegatei</i>	Applegate's milkvetch
CAGR	<i>Calochortus greenii</i>	Green's mariposa lily
CYMO	<i>Oxytripedium montanum</i>	Mountain lady's slipper
HEBO	<i>Helianthus bolanderi</i>	Bolander's sunflower
HECU	<i>Heliotropium curvassavicum</i>	Salt heliotrope
LIFLB	<i>Limnanthes floccosa</i> ssp. <i>bellingera</i>	Bellinger's meadow foam
MIPY	<i>Mirulus pygmaeus</i>	Egg lake monkeyflower
PEER	<i>Perideridia erythrorhiza</i> ²	Red-root yampah/ Gairdner's yampah
PEHO	<i>Perideridia howellii</i>	Howell's yampah-root
ROCO	<i>Rorippa columbiana</i>	Columbia yellow cress
SADOI	<i>Savia doriai</i> var. <i>incana</i>	Fleshy sage
SCPE	<i>Scirpus pendulus</i>	Pendulus bulrush
SILE	<i>Silene lemmonii</i> ³	Lemmon's silene/ Campanulate catchfly
THBR	<i>Thelypodium brachycarpum</i>	Short-podded thelypod

1. Number at end of plot label is unique population identifier.
 2. The identification of red root yampah has not been confirmed at any of these locations (see Section 5.7.1.1). Specimens collected at four different sites were determined to be Gairdner's yampah; the site labels for these sites are PEGA (*Perideridia gairdneri*).
 3. Observed *Silene* specimens keyed to *Silene campanulatum* (see Section 5.7.1.1).



Klamath Hydroelectric Project
Figure 5.7-1 (4 of 5)
TES Plants

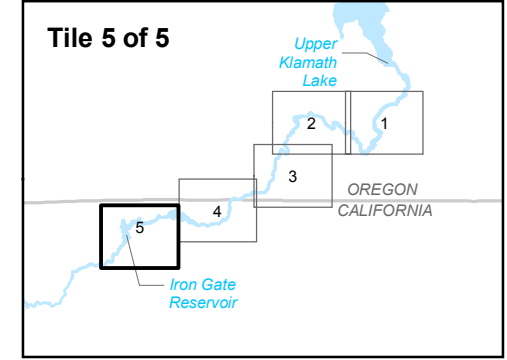
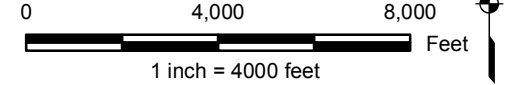


LEGEND

- TES PLANTS
- GENERALIZED VEGETATION CATEGORIES**
- CONIFER FOREST
- MIXED CONIFER/DECIDUOUS FOREST
- DECIDUOUS FOREST
- UPLAND SHRUB
- GRASSLAND
- AGRICULTURE
- RIPARIAN
- PALUSTRINE WETLAND
- OPEN WATER
- EXPOSED ROCK/ROCK TALUS
- DEVELOPED/DISTURBED
- PRIMARY STUDY AREA
- SECONDARY STUDY AREA
- PROJECT SECTION BOUNDARY
- HIGHWAY
- ROAD
- TRANSMISSION LINE
- STREAM

LABEL ¹	SCIENTIFIC NAME	COMMON NAME
ASAP	<i>Astragalus applegatei</i>	Applegate's milkvetch
CAGR	<i>Calochortus greenii</i>	Green's mariposa lily
CYMO	<i>Oxytripedium montanum</i>	Mountain lady's slipper
HEBO	<i>Helianthus bolanderi</i>	Bolander's sunflower
HECU	<i>Heliotropium curvassavicum</i>	Salt heliotrope
LIFLB	<i>Limnanthes floccosa</i> ssp. <i>bellingera</i>	Bellinger's meadow foam
MIPY	<i>Mirulus pygmaeus</i>	Egg lake monkeyflower
PEER	<i>Perideridia erythrorhiza</i> ²	Red-root yampah/ Gairdner's yampah
PEHO	<i>Perideridia howellii</i>	Howell's yampah-root
ROCO	<i>Rorippa columbiana</i>	Columbia yellow cress
SADOI	<i>Savia doriai</i> var. <i>incana</i>	Fleshy sage
SCPE	<i>Scirpus pendulus</i>	Pendulus bulrush
SILE	<i>Silene lemmonii</i> ³	Lemmon's silene/ Campanulate catchfly
THBR	<i>Thelypodium brachycarpum</i>	Short-podded thelypody

1. Number at end of plot label is unique population identifier.
 2. The identification of red root yampah has not been confirmed at any of these locations (see Section 5.7.1.1). Specimens collected at four different sites were determined to be Gairdner's yampah; the site labels for these sites are PEGA (*Perideridia gairdneri*).
 3. Observed *Silene* specimens keyed to *Silene campanulatum* (see Section 5.7.1.1).



Klamath Hydroelectric Project
Figure 5.7-1 (5 of 5)
TES Plants