

LEGEND
 2002-2003
 STATE AND/OR FEDERAL LISTED
 THREATENED, ENDANGERED, OR
 CANDIDATE SPECIES DETECTIONS*

T/E SPECIES/DETECTION YEAR

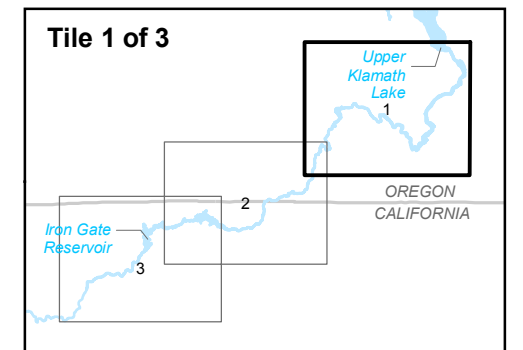
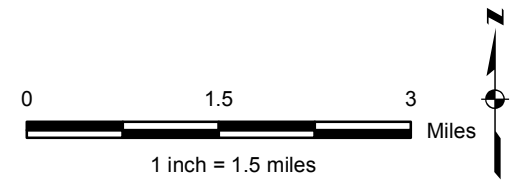
- BALD EAGLE, 2002 DETECTION
- GREAT GRAY OWL, 2002 DETECTION
- GREATER SANDHILL CRANE, 2002 DETECTION
- GREATER SANDHILL CRANE, 2003 DETECTION
- ▲ SANDHILL CRANE NEST SITE, 2003 DETECTION
- NORTHERN SPOTTED OWL, 2002 DETECTION
- NORTHERN SPOTTED OWL, 2003 DETECTION
- SWAINSON'S HAWK, 2002 DETECTION
- WILLOW FLYCATCHER, 2002 DETECTION

2 # OF INDIVIDUALS OBSERVED AT POINT

SURVEY POINT WITH OTHER TES DETECTION *

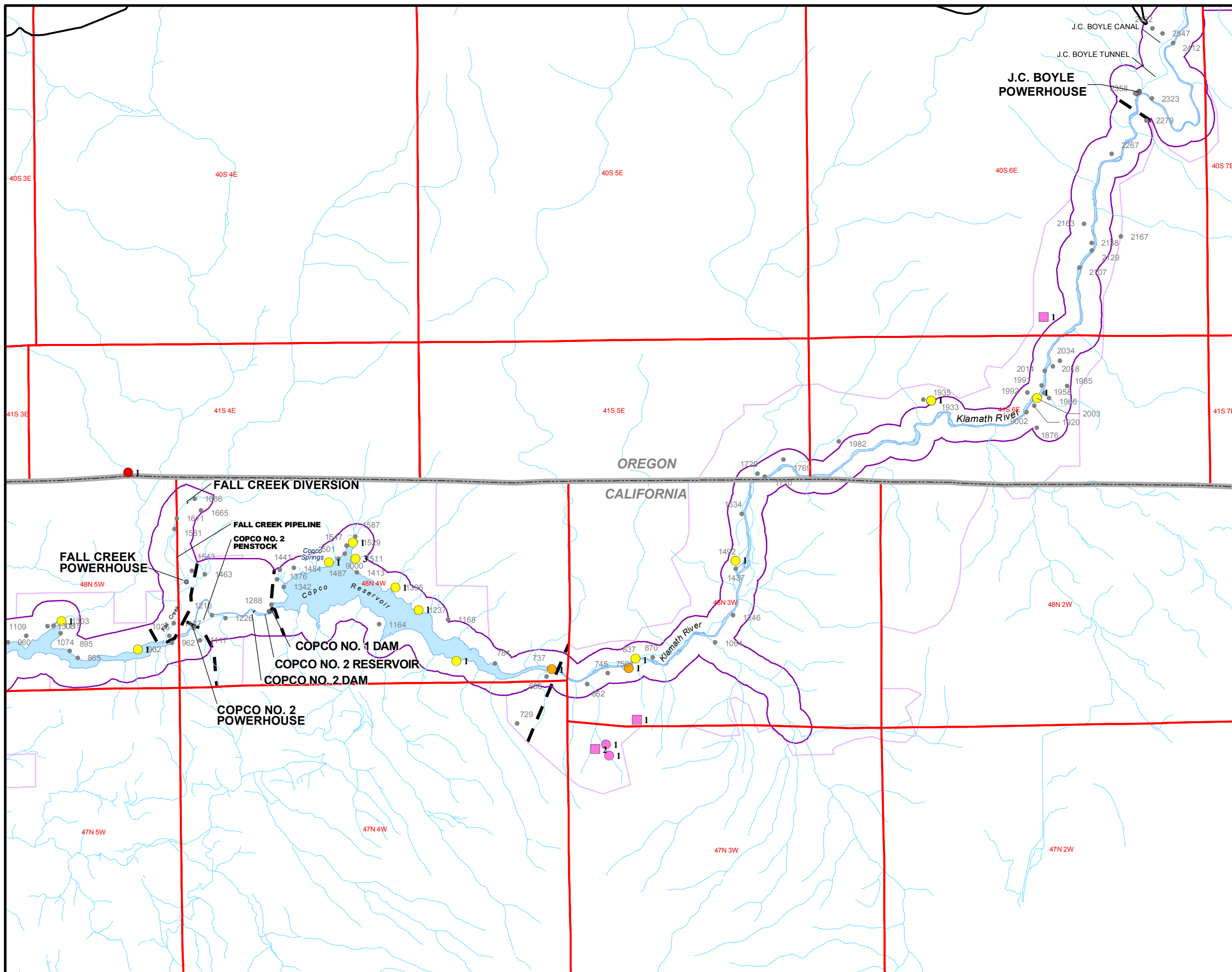
- SURVEY POINT
- 6 SURVEY PT. NUMBER
- ▭ PRIMARY STUDY AREA
- ▭ SECONDARY STUDY AREA
- PROJECT SECTION BOUNDARY
- HIGHWAY
- ▭ TOWNSHIP/RANGE
- STREAM
- ▭ OPEN WATER

* SEE TABLE 5A-7 IN APPENDIX 5A FOR TES SPECIES ASSOCIATED WITH EACH NUMBERED STATION.
 * WESTERN POND TURTLE DETECTIONS ARE INDICATED IN FIGURE 4.7-1.



Klamath Hydroelectric Project

Figure 5.7-2 (1 of 3)
 2002 TES Wildlife State and Federal Observations



LEGEND
 2002-2003
 STATE AND/OR FEDERAL LISTED
 THREATENED, ENDANGERED, OR
 CANDIDATE SPECIES DETECTIONS*

T/E SPECIES/DETECTION YEAR

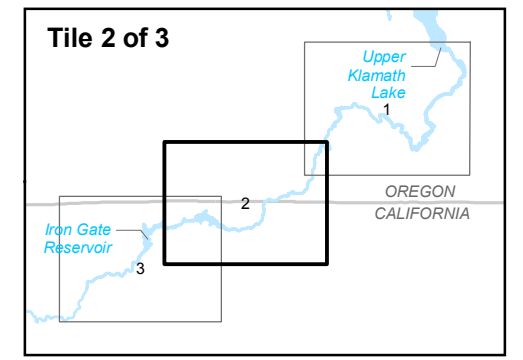
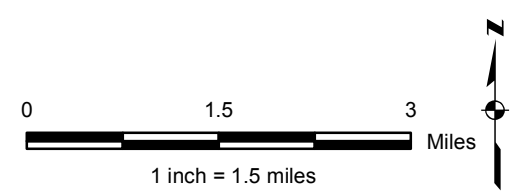
- BALD EAGLE, 2002 DETECTION
- GREAT GRAY OWL, 2002 DETECTION
- GREATER SANDHILL CRANE, 2002 DETECTION
- GREATER SANDHILL CRANE, 2003 DETECTION
- ▲ SANDHILL CRANE NEST SITE, 2003 DETECTION
- NORTHERN SPOTTED OWL, 2002 DETECTION
- NORTHERN SPOTTED OWL, 2003 DETECTION
- SWAINSON'S HAWK, 2002 DETECTION
- WILLOW FLYCATCHER, 2002 DETECTION

2 # OF INDIVIDUALS OBSERVED AT POINT

SURVEY POINT WITH OTHER TES DETECTION *

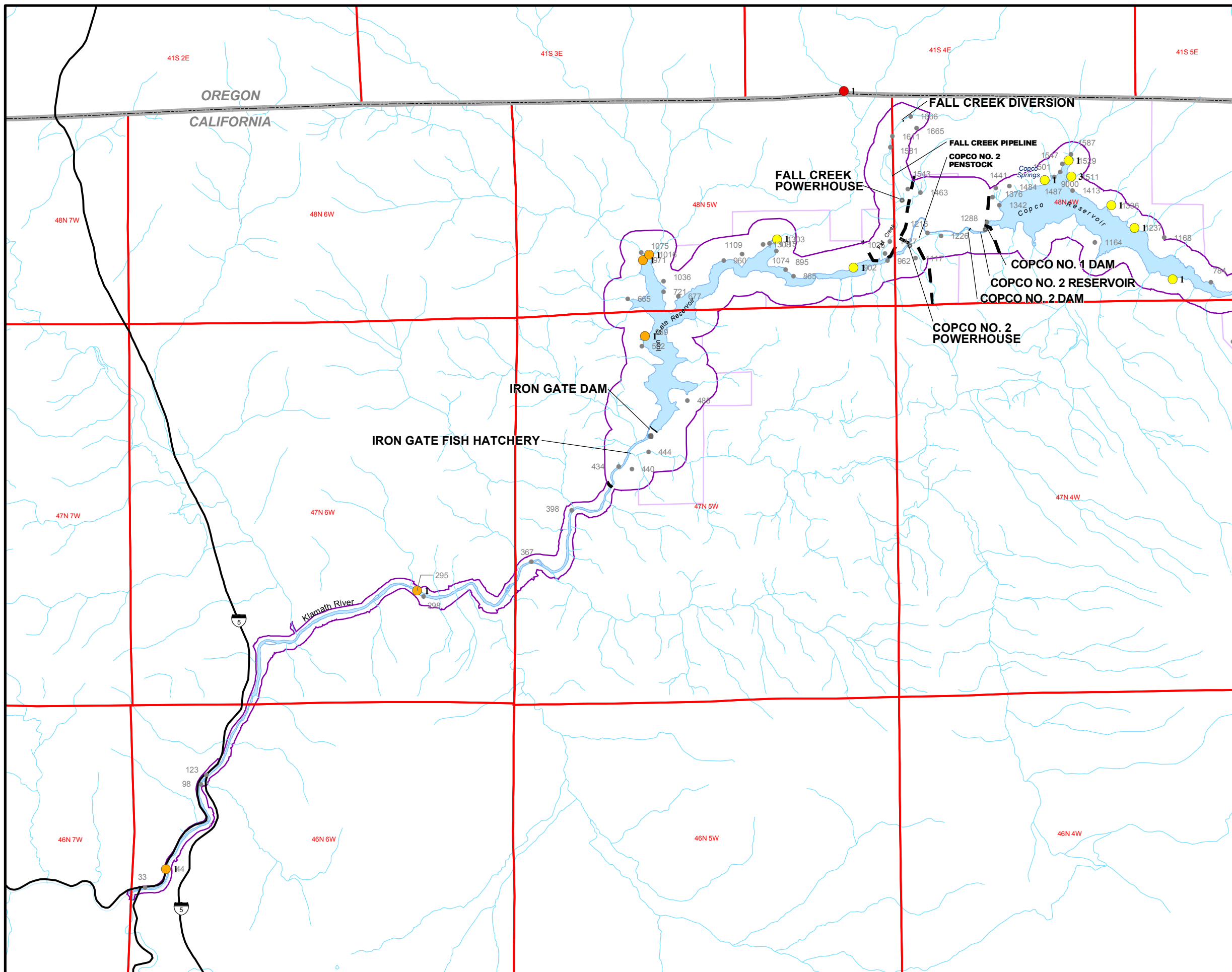
- SURVEY POINT
- 6 SURVEY PT. NUMBER
- PRIMARY STUDY AREA
- SECONDARY STUDY AREA
- PROJECT SECTION BOUNDARY
- HIGHWAY
- TOWNSHIP/RANGE
- STREAM
- OPEN WATER

* SEE TABLE 5A-7 IN APPENDIX 5A FOR TES SPECIES ASSOCIATED WITH EACH NUMBERED STATION.
 * WESTERN POND TURTLE DETECTIONS ARE INDICATED IN FIGURE 4.7-1.



Klamath Hydroelectric Project

Figure 5.7-2 (2 of 3)
 2002 TES Wildlife State and Federal Observations



LEGEND
 2002-2003
 STATE AND/OR FEDERAL LISTED
 THREATENED, ENDANGERED, OR
 CANDIDATE SPECIES DETECTIONS*

T/E SPECIES/DETECTION YEAR

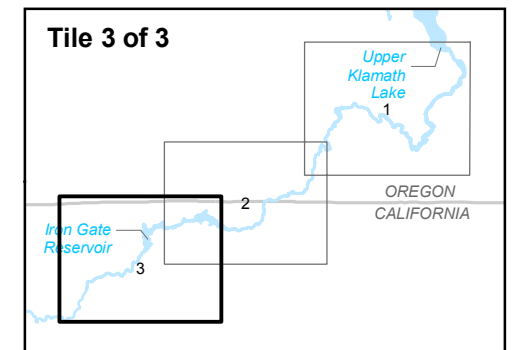
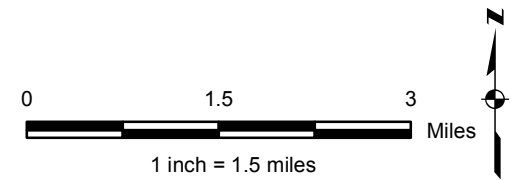
- BALD EAGLE, 2002 DETECTION
- GREAT GRAY OWL, 2002 DETECTION
- GREATER SANDHILL CRANE, 2002 DETECTION
- GREATER SANDHILL CRANE, 2003 DETECTION
- ▲ SANDHILL CRANE NEST SITE, 2003 DETECTION
- NORTHERN SPOTTED OWL, 2002 DETECTION
- NORTHERN SPOTTED OWL, 2003 DETECTION
- SWANSON'S HAWK, 2002 DETECTION
- WILLOW FLYCATCHER, 2002 DETECTION

2 # OF INDIVIDUALS OBSERVED AT POINT

SURVEY POINT WITH OTHER TES DETECTION *

- SURVEY POINT
- 6 SURVEY PT. NUMBER
- ▭ PRIMARY STUDY AREA
- ▭ SECONDARY STUDY AREA
- PROJECT SECTION BOUNDARY
- HIGHWAY
- ▭ TOWNSHIP/RANGE
- STREAM
- OPEN WATER

* SEE TABLE 5A-7 IN APPENDIX 5A FOR TES SPECIES ASSOCIATED WITH EACH NUMBERED STATION.
 * WESTERN POND TURTLE DETECTIONS ARE INDICATED IN FIGURE 4.7-1.



Klamath Hydroelectric Project
Figure 5.7-2 (3 of 3)
 2002 TES Wildlife State and Federal Observations