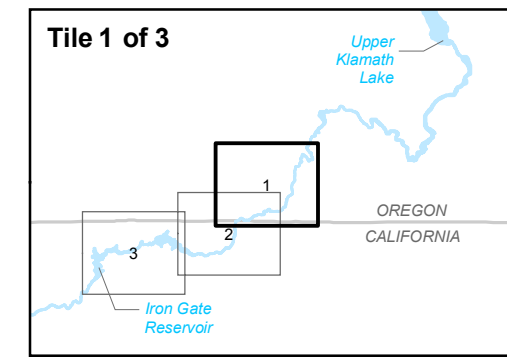
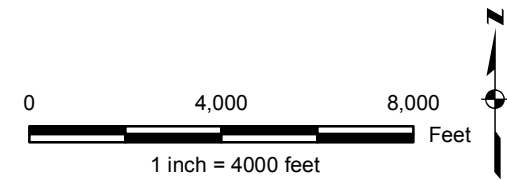


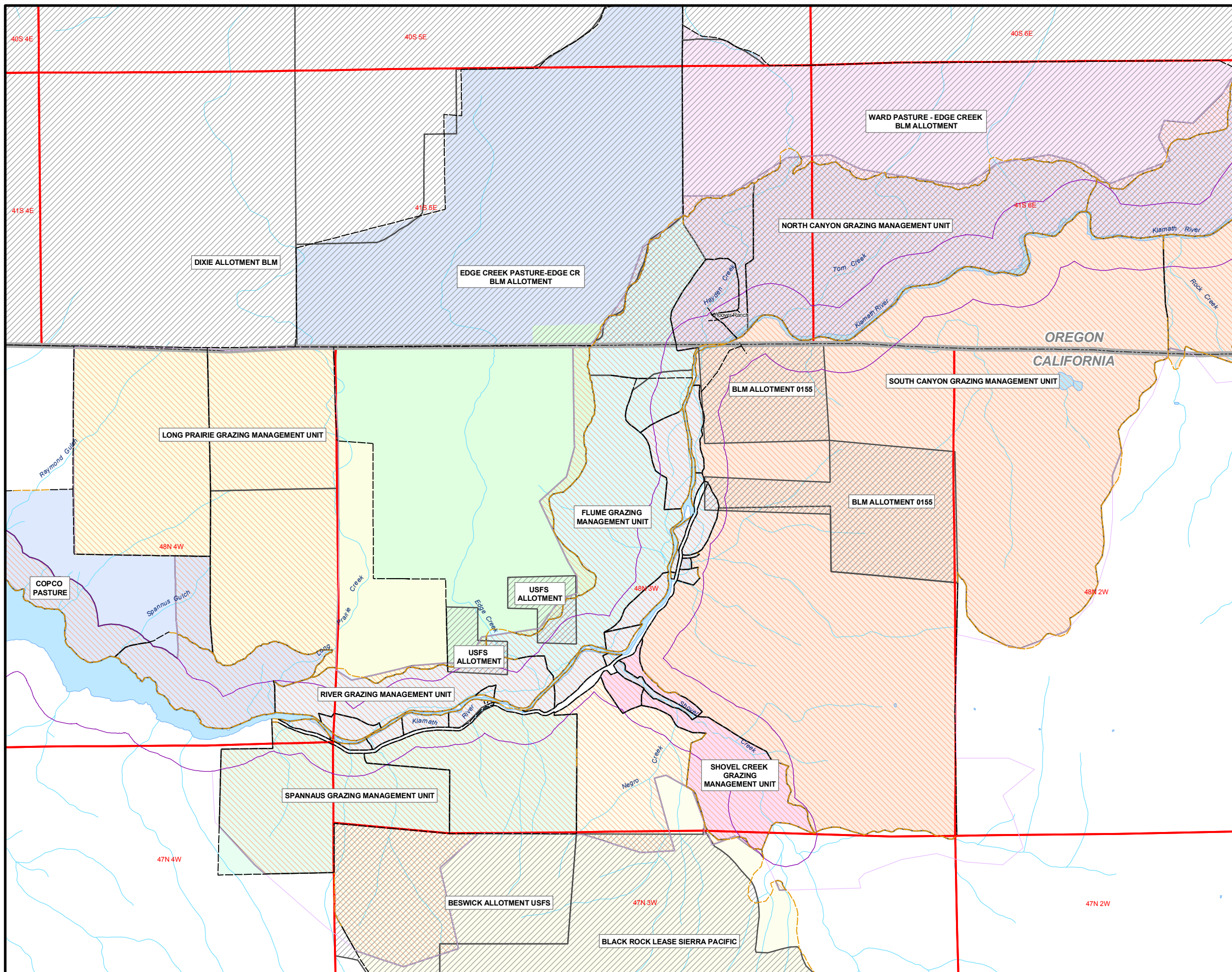
**LEGEND**

- FENCE
- NATURAL BARRIER
- ▨ ALLOTMENT
- ▨ GRAZING MANAGEMENT UNIT
- ▭ PRIMARY STUDY AREA
- ▭ SECONDARY STUDY AREA
- ▭ TOWNSHIP/RANGE
- STREAM
- OPEN WATER



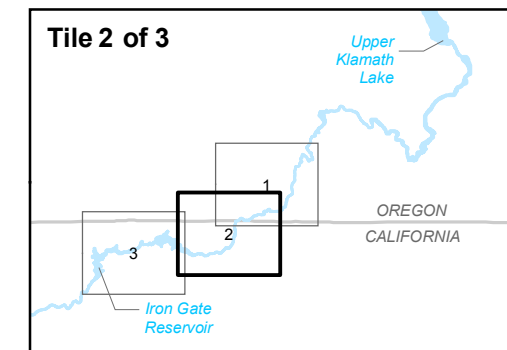
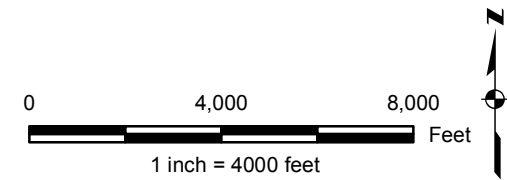
**Klamath Hydroelectric Project**

**Figure 9.7-1 (1 of 3)**  
Grazing Management Units, Allotments,  
and Fences in the Study Area



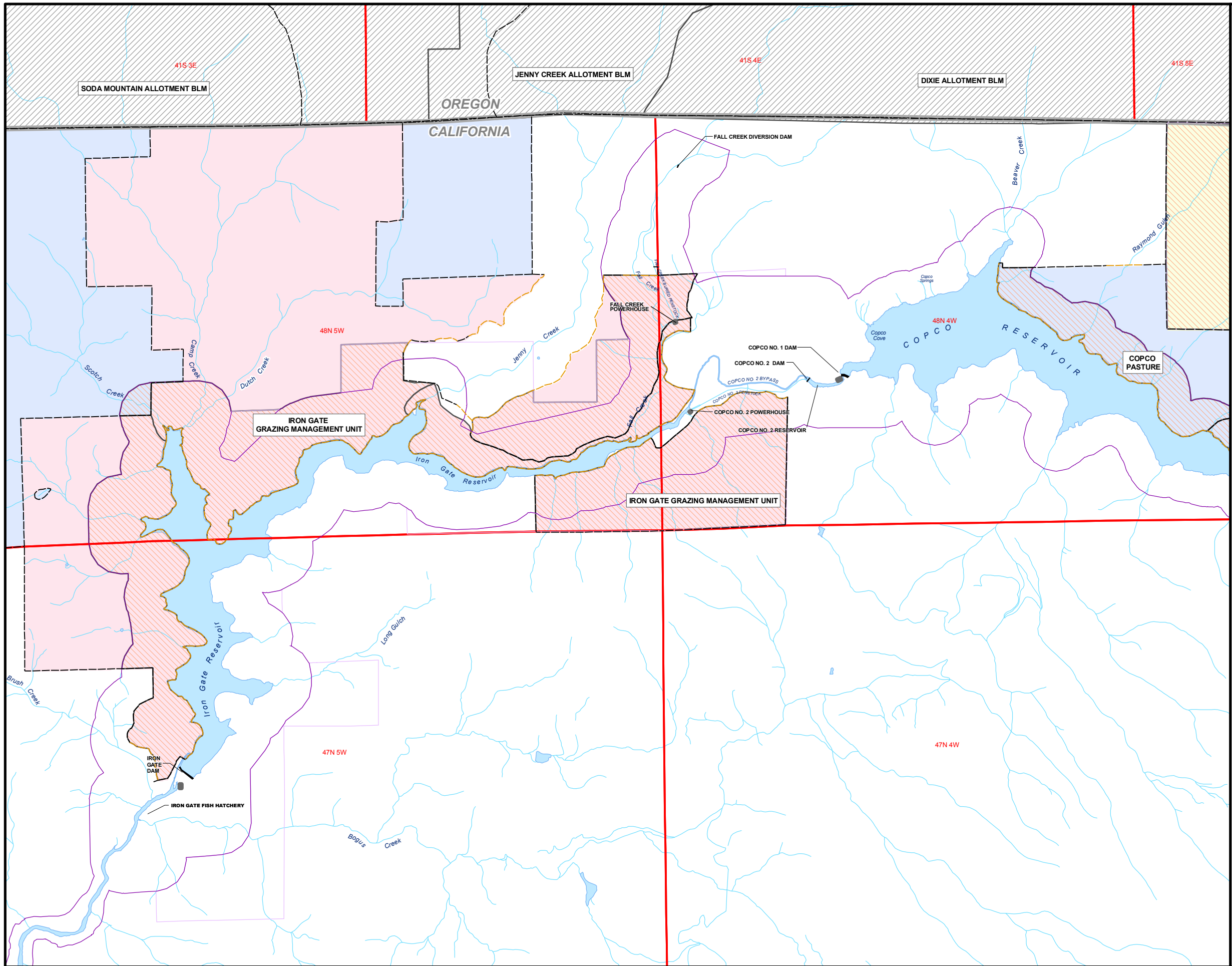
**LEGEND**

- FENCE
- NATURAL BARRIER
- ALLOTMENT
- GRAZING MANAGEMENT UNIT
- PRIMARY STUDY AREA
- SECONDARY STUDY AREA
- TOWNSHIP/RANGE
- STREAM
- OPEN WATER



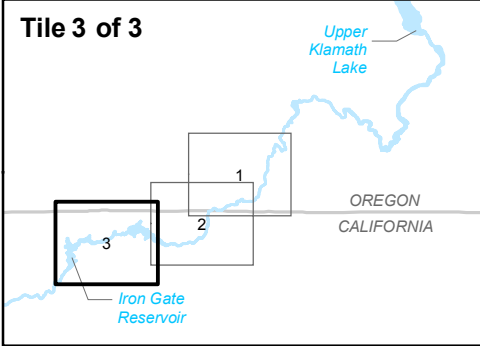
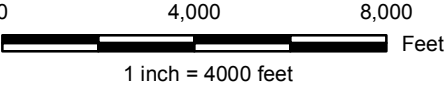
**Klamath Hydroelectric Project**

**Figure 9.7-1 (2 of 3)**  
Grazing Management Units, Allotments, and Fences in the Study Area



**LEGEND**

- FENCE
- NATURAL BARRIER
- ▨ ALLOTMENT
- ▨ GRAZING MANAGEMENT UNIT
- ▭ PRIMARY STUDY AREA
- ▭ SECONDARY STUDY AREA
- ▭ TOWNSHIP/RANGE
- STREAM
- OPEN WATER



**Klamath Hydroelectric Project**

**Figure 9.7-1 (3 of 3)**  
Grazing Management Units, Allotments,  
and Fences in the Study Area