

Global Climate Change Working Group

2005 Production & Related Emissions

November 28, 2006



Pacific Power | Rocky Mountain Power | PacifiCorp Energy

PacifiCorp Overview

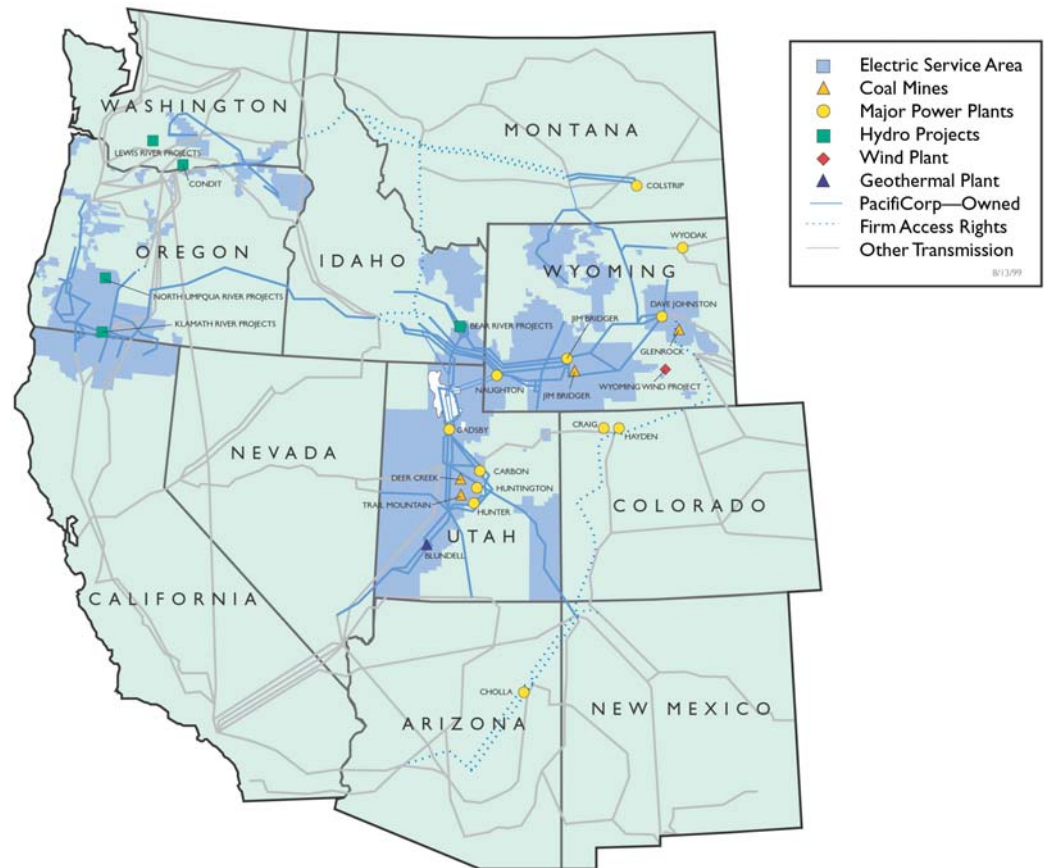
Service Area

Area Covered: 136,000 Square Miles
Utah, Oregon, Wyoming

States Served: Washington, Idaho and California

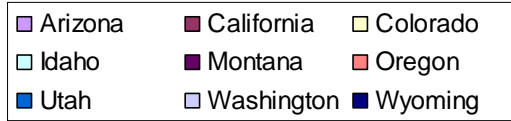
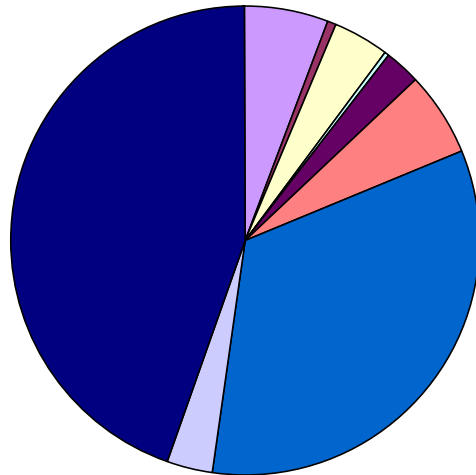
Customers by State

Utah:	722,525
Oregon:	527,408
Wyoming:	125,395
Washington:	122,010
Idaho:	63,702
California:	43,777
Total:	1,604,817

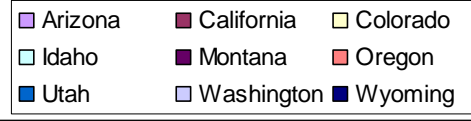
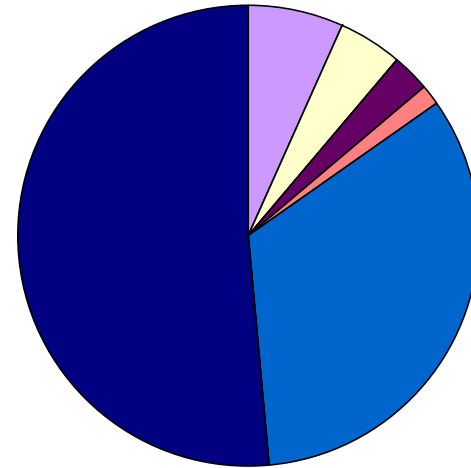


PacifiCorp Statistics (Based Upon Equity Interest)

**Geographic Distribution of Generation
(2005)**



**Geographic Distribution of Emissions
(2005)**



PacifiCorp Statistics (Based Upon Equity Interest)

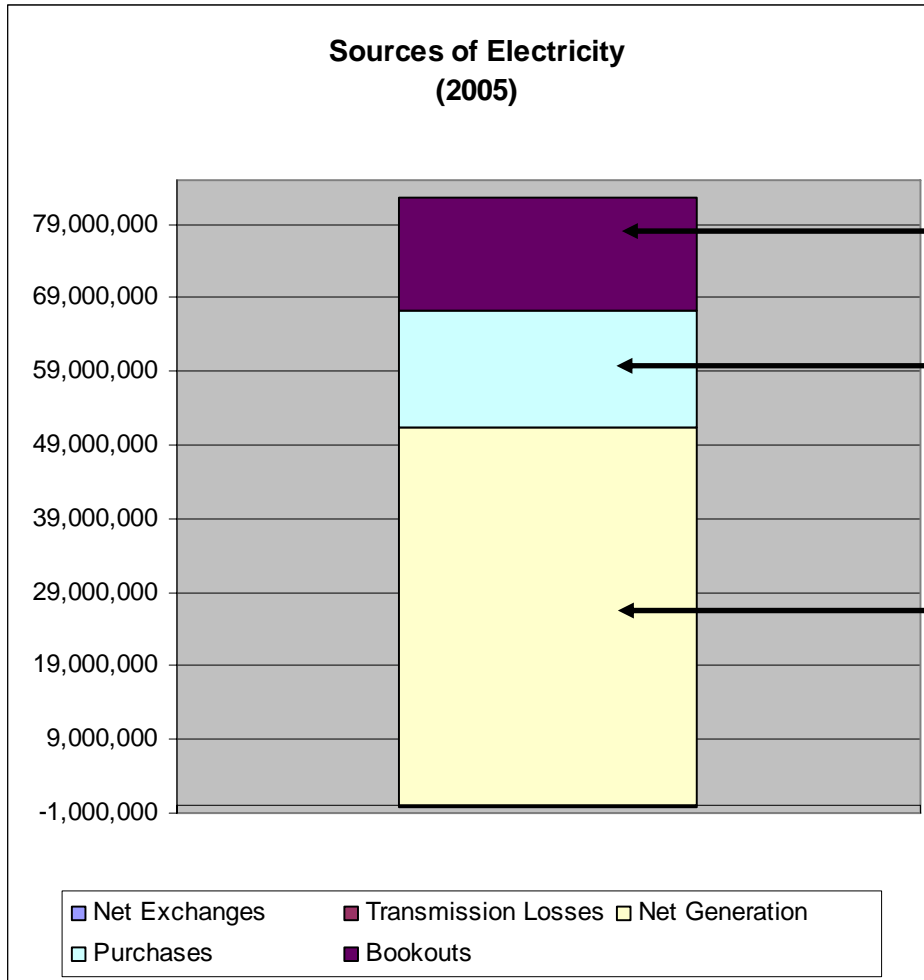
Direct Emissions/Megawatt-Hour Production, Based Upon Equity Interest

Jurisdiction	Direct Emissions short ton/CO2	MWH Net Generation					Total MWh
		Fossil	Large Hydro	Geothermal	Wind	Nuclear	
Arizona	3,406,571	2,969,570	0	0	0	0	2,969,570
California	0	0	294,589	0	0	0	294,589
Colorado	2,401,331	2,026,046	0	0	0	0	2,026,046
Idaho	0	0	148,399	0	0	0	148,399
Montana	1,356,120	1,180,949	30,861	0	0	0	1,211,810
Oregon	792,984	1,857,143	1,197,442	0	0	-137	3,054,448
Utah	17,294,276	16,737,284	205,289	184,820	0	0	17,127,393
Washington	0	174,690	1,394,938	0	0	0	1,569,628
Wyoming	26,716,751	22,904,006	806	0	104,394	0	23,009,206
Total System	51,968,031	47,849,688	3,272,324	184,820	104,394	-137	51,411,089

PacifiCorp Statistics (Based Upon Equity Interest)

Jurisdiction	Emissions Intensity lbs/net MWH
Arizona	2,294
California	0
Colorado	2,370
Idaho	0
Montana	2,238
Oregon	519
Utah	2,019
Washington	0
Wyoming	2,322
Total System	2,022

PacifiCorp Statistics



“Bookouts”: were 15,328,077 megawatt-hours

Purchased Power:
 est. 1,129 lbs/MWh
 31,172,017 MWh
 est. 17,598,686 short tons

PacifiCorp Self-Generated Power:
 2,022 lbs/MWh
 51,411,089 MWh
 51,968,031 short tons

PacifiCorp Purchases & Indirect Emissions

Figure 8.1: eGRID Subregions

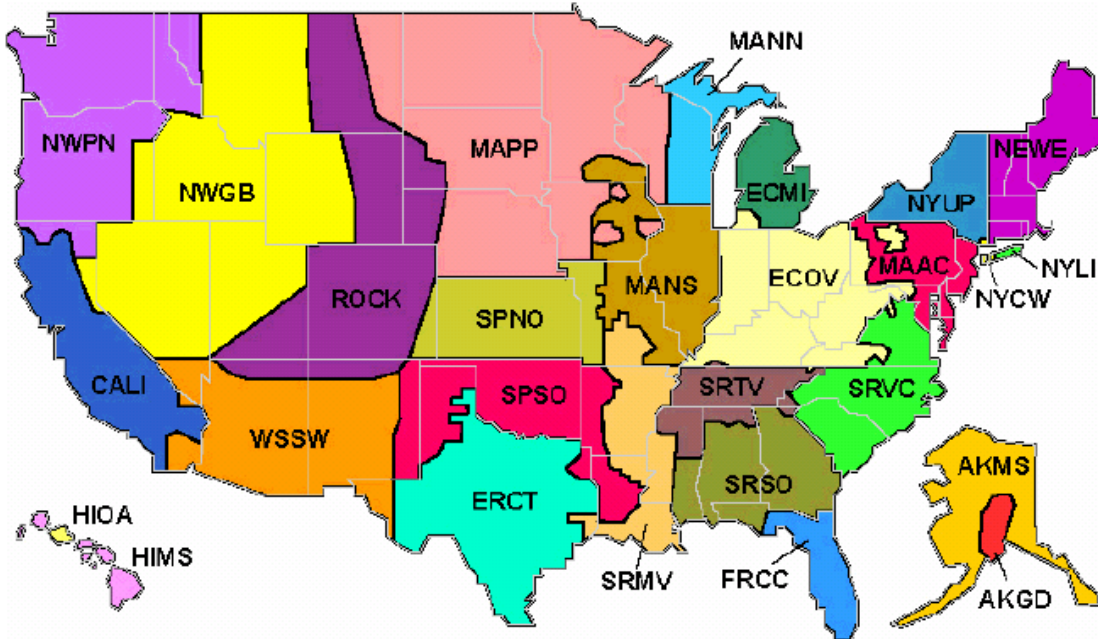


Table 8.2 eGRID Subregion Annual Average CO₂ Output-Based Emission Rates (Year 2000 - Total Energy)

eGRID Subregion Name	eGRID Subregion Acronym	CO ₂ Output Emission Rate (lbs/MWh)
WECC California	CALI	804.54
WECC Great Basin	NWGB	852.31
WECC Pacific Northwest	NWPN	671.04
WECC Rockies	ROCK	1872.51
WECC Southwest	WSSW	1423.95

eGRID2002 Version 2.01 Location (Operator)-Based eGRID Subregion File (Year 2000 Data)

PacifiCorp Statistics (System Indirect Emissions)

Transmission & Distribution System Related Losses					
Electricity Purchases			Electricity Wheeled		
	Indirect Emissions tonne/CO2	Indirect Emissions short ton/CO2e		Indirect Emissions tonne/CO2	Indirect Emissions short ton/CO2e
System	480,557	529,723	System	179,213	197,548

- Calculate a T&D loss factor (Total Energy Losses divided by Total Electric Energy)
- Multiply T&D loss factor against Total Purchases (Electricity purchases)
- Multiply T&D loss factor against Transmission for Others (Electricity Wheeled)
- Multiply Megawatts Against Weighted Emission Factor for Each Type (2005 data: 1,129 lbs/MWh for electricity purchases and 1,215 lbs/MWh for electricity wheeled)

PacifiCorp Statistics (System Indirect Emissions)

Company Electricity Consumption (2005)		
Jurisdiction	Indirect Emissions tonne/CO2e	Indirect Emissions short ton/CO2e
California	495	546
Idaho	942	1,039
Oregon	6,425	7,082
Utah	26,044	28,709
Washington	613	675
	37,610	41,458

PacifiCorp Statistics (SF6 Direct Emissions)

SF6 Fugitive Emissions (2005)			
System	lbs. SF6	short ton CO2e	tonne CO2e
Pacific Power	3,913	43,434	39,403
Rocky Mtn.	24,977	277,245	251,512

Next Steps

- The 2005 emissions and production data will be certified by an independent third party.
- Once certified, the data will be posted to the public section of the CCAR website.

Questions

Kyle L. Davis

kyle.l.davis@pacificorp.com or

(503) 813-6601