

Gateway South

New transmission project to help meet growing need for electricity



As demand for electricity grows, Rocky Mountain Power plans a new transmission project to serve customers

Rocky Mountain Power is always working to provide safe, reliable electrical service to meet the growing needs of its customers. With energy use on the rise and electrical demand fast approaching the limits of the existing transmission system, new facilities are needed to meet the growing demand. Despite the recent economic slowdown, typical residential customers today use 26 percent more electricity than they did 20 years ago.

In 2007, Rocky Mountain Power's parent company, PacifiCorp, committed to expanding its transmission network to ensure sufficient capacity would be available to meet the needs of its new and existing customers. The Gateway South transmission project will increase capacity and service reliability for customers in the region. To meet expected demand, the project is planned to be completed and in service to customers sometime during 2017-2019.



Let's turn the answers on.

Project description

The Gateway South project is a 500 kilovolt transmission line, approximately 400 miles in length (depending on the route that is selected), beginning at the planned Aeolus substation near Medicine Bow, Wyoming and terminating at the Clover substation near Mona, Utah.

The proposed structures, made of dulled galvanized steel, would vary in type depending on the location. The height would range from approximately 140 feet to 190 feet and the average span between structures would be approximately 1,000 to 1,500 feet (four to five structures per mile). The line would be constructed on a 250-foot-wide right of way to accommodate the construction and operation of the transmission line.

Route selection process

Many location options are being considered for the transmission line and public involvement will play a key role in selecting a final preferred route. Public

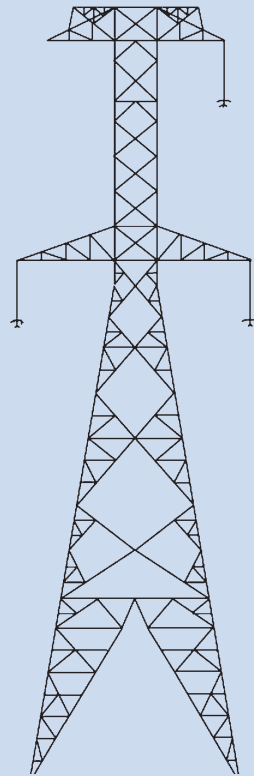
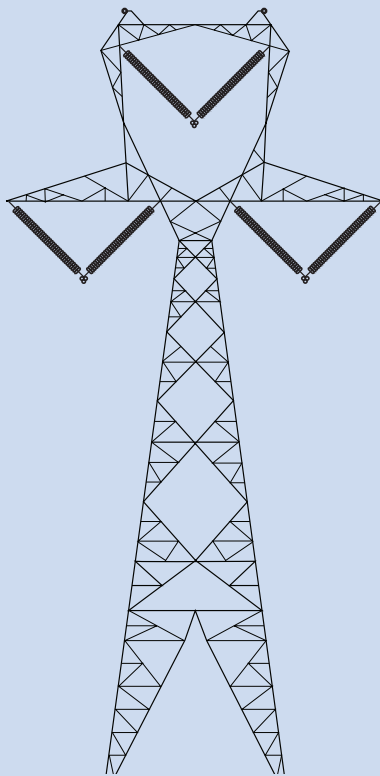
input will be gathered through open house meetings and ongoing consultation with landowners, agencies and local governments. This public feedback will be accommodated to the greatest extent possible, even if all impacts cannot be eliminated.

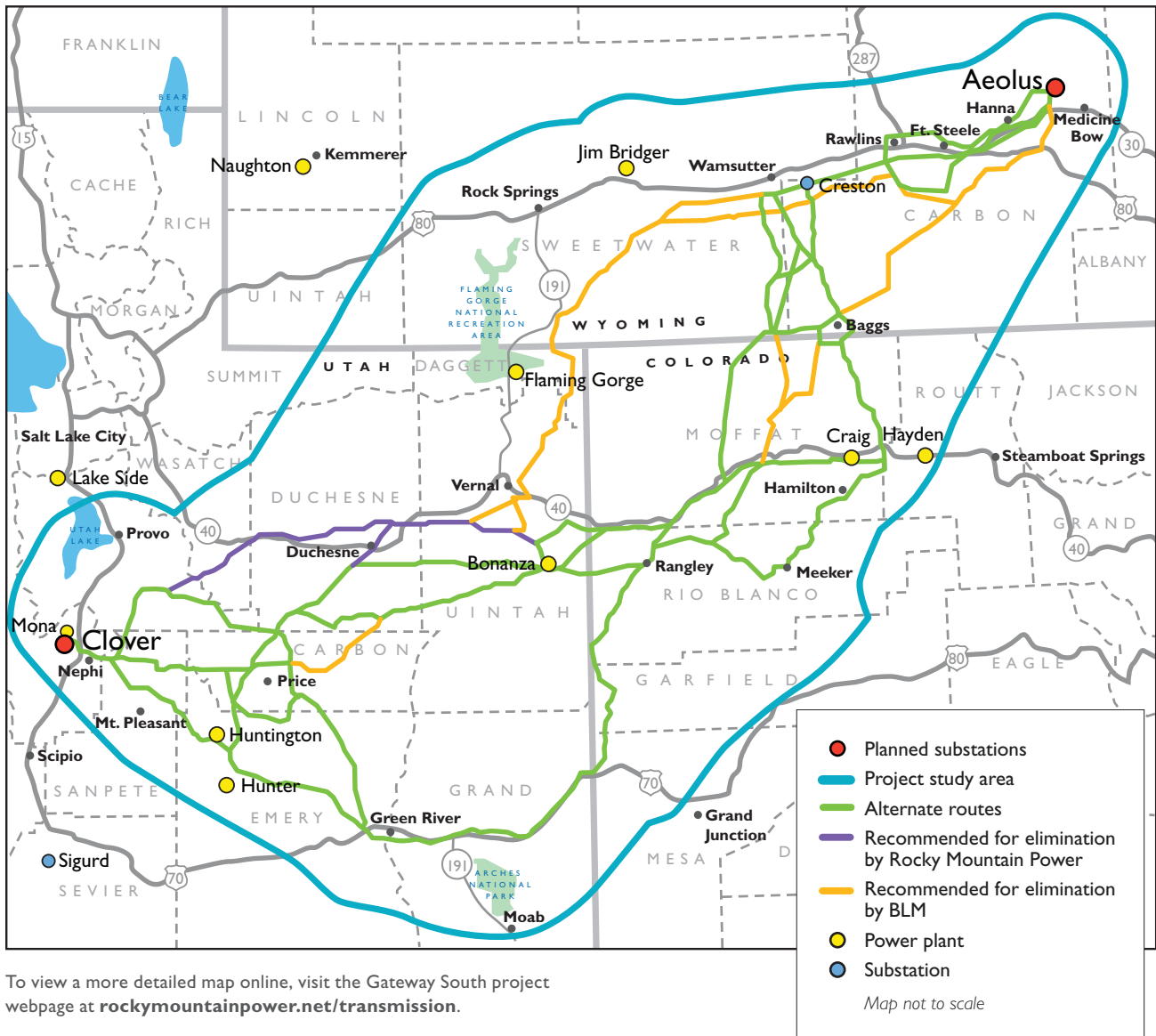
Criteria also considered in reviewing route alternatives include: electric service reliability, safety, technical feasibility, eventual cost to customers, land use, accessibility, geography, access to areas to be served, other utility locations, visual resources, historical and cultural sites, agriculture, vegetation, wildlife management areas, raptor nesting, economic development, parks and monuments, soil conditions and other factors.

Environmental review & permitting process

Rocky Mountain Power conducted a feasibility analysis for the project and identified preliminary routing alternatives prior to filing a right of way application with the Bureau of Land Management

Typical structure types





and the U.S. Forest Service in December 2008 for routes affecting federal lands in Wyoming, Colorado and Utah. Many locations were considered during the feasibility analysis for the transmission line to ensure the additional capacity and improved reliability were sufficient to meet the current and future needs of customers.

The BLM, as lead agency for compliance with the National Environmental Policy Act, determined that an Environmental Impact Statement is required and is working with the Forest Service as well as other federal, state and local cooperating agencies on the EIS.

Public participation is encouraged throughout the development of the EIS. Detailed information regarding public meetings will be published in local newspapers, mailed to project-specific mailing lists and posted on company and BLM websites. Several alternative routes are currently proposed. The final route will be determined through the EIS process.

Once the route has been selected, Rocky Mountain Power will continue to work directly with landowners to obtain rights of way. The company also will apply for all necessary permits and approvals from other federal and state agencies and local jurisdictions.

Project timeline

- Public Scoping (conducted by BLM)
May 2011 – June 2011
- Environmental Impact Statement
December 2008 – 2015
- Informational meetings
2009 – project completion
- Estimated line in service for customers
2017 – 2019

Public information process

Rocky Mountain Power will continue to involve the public in all aspects in the planning and development of this project. As project planning continues, newsletters and other informational materials will continue to be posted online and distributed to landowners and interested citizens.

For more information, please contact us. Because there are a number of projects underway, please specify that your request is regarding the Gateway South project.

E-mail: ConstructionProjects@pacificorp.com

Message line: **801-220-4221**

Web: rockymountainpower.net/transmission and select "Gateway South"

To have your comments regarding the Gateway South project considered as part of the official record, please submit them directly to:

BLM Wyoming State Office

Attn: Gateway South Project

P. O. Box 21150

Cheyenne, WY 82003

E-mail: GatewaySouth_WYMail@blm.gov

Web: http://www.blm.gov/wy/st/en/info/NEPA/documents/hdd/gateway_south.html

Please send your comments to both Rocky Mountain Power and the BLM. Comments made directly to the BLM become part of the official record.



Let's turn the answers on.