

March 2008  
Vol 1 • Issue 1

## Public open house planned

Rocky Mountain Power is holding a **public open house** meeting to share information regarding the project in your area. Everyone is welcome to attend.

**Tuesday, March 18, 2008**

5 p.m. - 7 p.m.

Salt Lake Community College  
Larry H. Miller Campus  
Building MFEC, Room 117  
9750 South 300 West  
Sandy, Utah

## Keeping you informed

To submit a question or comment about this project, e-mail us at **ConstructionProjects@pacificorp.com** or call **(801) 220-4221**. Please be sure to include the project name (Camp Williams to 90th South 345kV Transmission Project) when you contact us.

You'll also find more information on our Web site at **www.rockymountainpower.net/transmission**.

# transmission lines

Important news about our **Camp Williams to 90th South** transmission project

## New transmission project to help meet region's growing demand for electricity

Rocky Mountain Power is committed to providing safe, reliable and efficient electrical service to our customers in Utah, Idaho and Wyoming, while keeping costs down. We plan to construct a new double-circuit 345 kilovolt (kV) transmission line from the existing Camp Williams substation in Herriman to the 90th South substation in West Jordan.

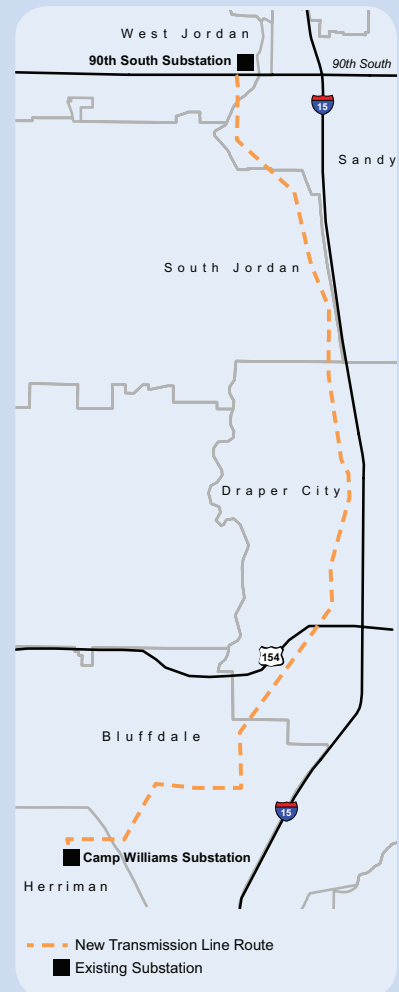
### Why is the new transmission line needed?

The electrical needs of our new and existing customers are steadily increasing. We estimate electrical demand will grow at an annual average rate of 3.4 percent during the next ten years. Because existing transmission facilities are already being used to their fullest extent, new transmission lines and substations are required to provide the additional capacity necessary to serve the increased demand. New transmission lines and expanded substations also will benefit customers by improving the system's reliability now and flexibility in the future.

### Camp Williams to 90th South project overview

Construction of the new transmission line is planned as follows:

- The existing 90th South substation will be expanded to accommodate the new 345kV line.
- Existing line terminations will be re-arranged and new line terminations added at the Camp Williams substation.



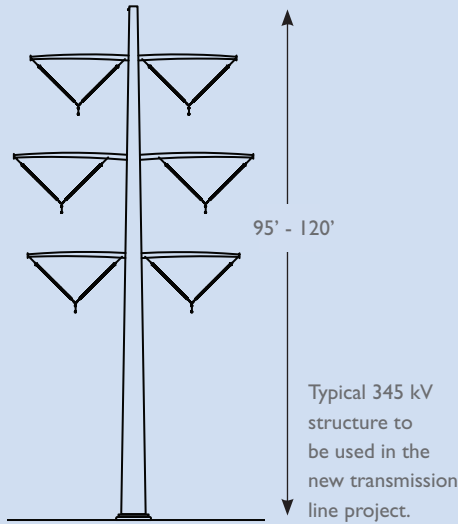
This map shows the Camp Williams to 90th South line project area.

- A new 11-mile, double-circuit 345kV overhead transmission line will be built from Camp Williams substation to 90th South substation. This line will run parallel to the existing 345kV double circuit line between Camp Williams and 90th South.

(continued)

(continued from front)

- Single-pole steel structures, approximately 95 to 120 feet tall, will carry the transmission line. The new structures will be installed approximately 70 feet west of existing structures.



- The right of way width will be approximately 184 feet for the entire corridor, including existing lines. Rocky Mountain Power currently owns sufficient rights of way through a combination of easements and fee-owned property in this area.

### Project schedule

To present information and gather input on this project, we have been meeting with local officials, stakeholders and agencies. We will also host a public open house meeting this month for local residents and businesses to learn more. Required permit applications will then be prepared and submitted for approval. Once the permitting process is completed and approvals are obtained, construction of the project will begin. The timeline for the project is outlined in the sidebar at the right.

## Timeline for the project

December 2007 – January 2008  
Stakeholder/Agency briefings

### Tuesday, March 18, 2008

Public Informational Open House  
5 p.m. - 7 p.m.  
Salt Lake Community College, Larry H. Miller Campus  
Building MFEC, Room 117  
9780 South 300 West  
Sandy, Utah

### April – October 2008

Project permitting

### 2009 – 2010

Project construction

### December 2010

Project in service

**Come to our Open House March 18th!**

Web: [www.rockymountainpower.net/transmission](http://www.rockymountainpower.net/transmission)

Phone: (801) 220-4221

E-mail: [@pacificorp.com](mailto:@pacificorp.com)  
ConstructionProjects

Rocky Mountain Power

For contact information:

transmission lines



201 South Main, Suite 2300  
Salt Lake City, Utah 84111

RESORTED  
FIRST-CLASS MAIL  
PAID  
PORTLAND, OR  
PERMIT #681

Important news about our Camp Williams to 90th South transmission project