



CCR Landfill Post-Closure Plan Hunter Power Plant



PacifiCorp, Hunter Power Plant

Coal Combustion Residual Landfill

Revision 2
September 2016

CCR Landfill Post-Closure Plan Hunter Power Plant

Prepared for

PacifiCorp, Hunter Power Plant
Coal Combustion Residual Landfill
Castle Dale, Utah

Revision 2
September 2016

Prepared by

URS
Salt Lake City, Utah

INDEX AND CERTIFICATION

PacifiCorp, Hunter Power Plant CCR Landfill Post-Closure Plan Hunter Power Plant

Report Index

<u>Chapter Number</u>	<u>Chapter Title</u>	<u>Number of Pages</u>
1.0	Introduction	3
2.0	Written Post-Closure Plan	2
3.0	References	1

Certification

I hereby certify, as a Professional Engineer in the State of Utah, that the information in this document was assembled under my direct personal charge. This report is not intended or represented to be suitable for reuse by the PacifiCorp, Hunter Power Plant or others without specific verification or adaptation by the Engineer.

I hereby certify, as a Professional Engineer in the State of Utah that the initial run-on and run-off control system plans provided herein meet the requirements of 40 Code of Federal Regulations 257.104.




Robert Snow, P.E. (UT #7718142)

Date: 9/30/16

Robert Snow
License Number 7718142

My license renewal date is March 31, 2017

Pages or sheets covered by this seal: As noted above.

TABLE OF CONTENTS

	<u>Page No.</u>
1.0 INTRODUCTION	1-1
1.1 Background	1-1
2.0 WRITTEN POST-CLOSURE PLAN	2-1
2.1 Monitoring and Maintenance of CCR Landfill.....	2-1
2.2 Post-Closure Contact	2-2
2.3 Post-Closure Land Use	2-2
2.4 Post-Closure Plan Amendments	2-2
3.0 REFERENCES	3-1

LIST OF TABLES AND FIGURES

	<u>Page No.</u>
Figure 1-1. General Power Plant and CCR Landfill Location Map	1-2
Figure 1-2. Hunter Power Plant CCR Landfill Site Overview	1-3

LIST OF ABBREVIATIONS

<u>Abbreviation</u>	<u>Term/Phrase/Name</u>
BOD	Basis of Design
CCR	Coal Combustion Residual
USEPA	United States Environmental Protection Agency

1.0 INTRODUCTION

This Post-Closure Plan describes the steps necessary following closure of the coal combustion residuals (CCR) Landfill at the Hunter Power Plant in compliance with United States Environmental Protection Agency (USEPA) regulations for CCR (USEPA 2015, Disposal of Coal Combustion Residuals from Electric Utilities – 40 CFR §257, Federal Register 80, no. 74, April 17, 2015, hereinafter referred to as the “Rule”). This plan is based on requirements as specified in the Basis of Design Memo (BOD) (URS, 2015a), the Hunter Plant PacifiCorp CCR Landfill Design Documents (URS, 2015b), and the Combustion Waste Landfill Operations Manual (PacifiCorp, 2003).

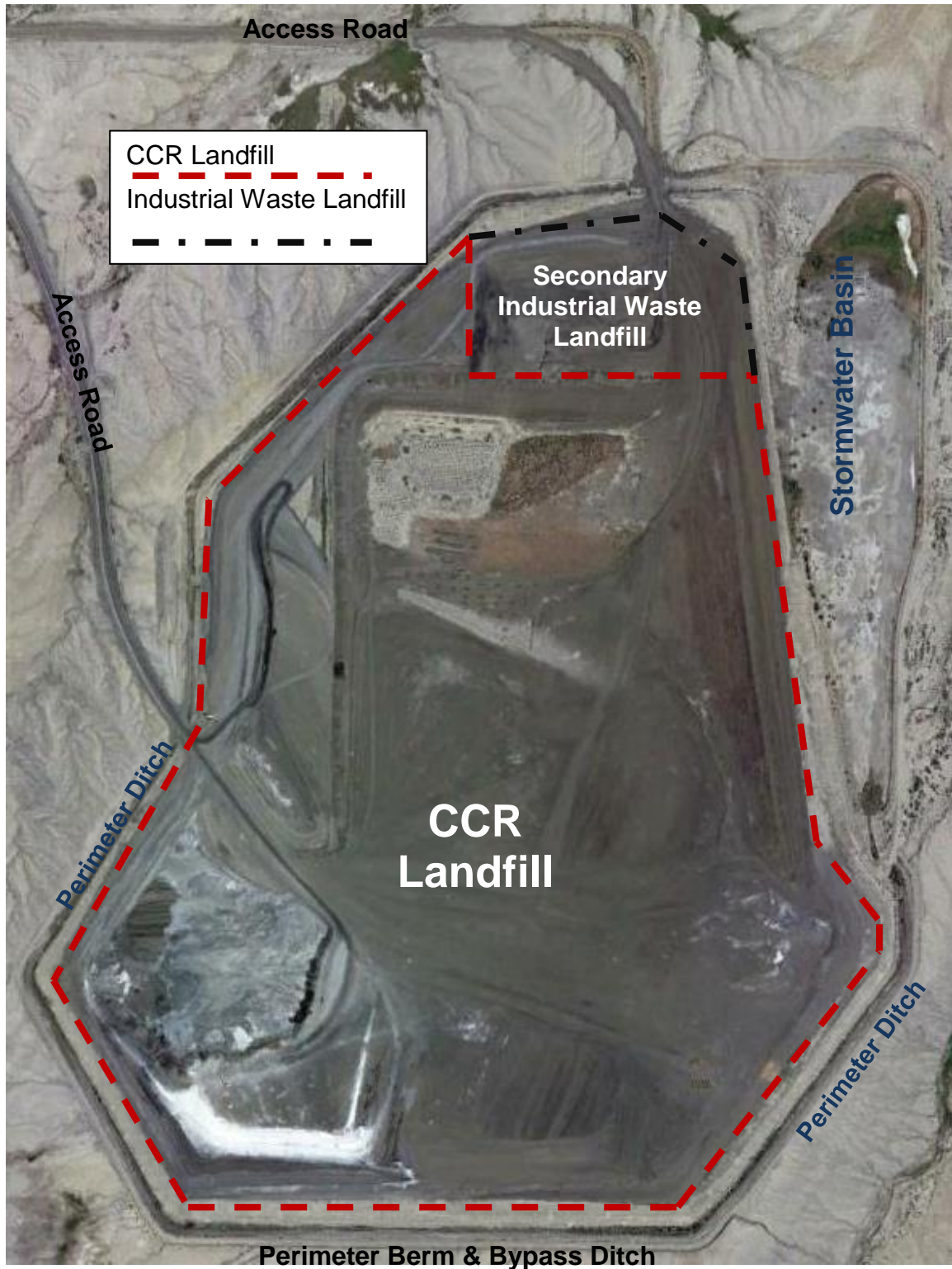
1.1 Background

The Hunter Power Plant is a coal-fired power generation facility located 2.5 miles south of Castle Dale, Utah. The CCR landfill occupies approximately 230 acres southeast of the power plant, as shown in Figure 1-1. The CCR landfill will be closed in place incrementally during operation with complete closure occurring with the closure of the Hunter Plant (estimated 2042). The anticipated capacity at final closure is estimated at 44.5 million cubic yards. The maximum area the landfill ever requiring a final cover is 230 acres. Figure 1-2 includes an overview of the landfill and its horizontal extents.

Figure 1-1. General Power Plant and CCR Landfill Location Map
(image created using *GoogleEarth Pro* and its partners, copyright protected)



Figure 1-2. Hunter Power Plant CCR Landfill Site Overview
(image created using *GoogleEarth Pro* and its partners, copyright protected)



2.0 WRITTEN POST-CLOSURE PLAN

This section details the post-closure plan as required in §257.104(d).

2.1 Monitoring and Maintenance of CCR Landfill

The CCR landfill will be inspected every six months for the following:

- Inspection and repair of areas of excessive erosion
- Inspection and repair of areas of excessive settlement
- Inspection and removal of accumulated sediment within the stormwater features
- Inspection and removal of invasive vegetation
- Removal of burrowing animals and filling burrows/holes

Plant staff will inspect the cover system and stormwater conveyance channels for wind and water erosion, and apply prompt remedies as follows:

- It is anticipated that erosion rills in excess of one (1) foot in depth within the cover system will be repaired by filling the rills. Erosion will be repaired and returned to the as-built condition.
- Since stormwater features require that a positive slope be maintained, particular attention will be given to settlement areas on the top surface of the CCR landfill, especially potential slope reversal locations. Should these be found, immediate action to refill the areas will be undertaken to prevent infiltration of rainwater into the landfill.
- Displaced riprap and geotextile materials will be reconstructed to restore the original as-built condition.

The groundwater monitoring system will be maintained and monitored according to the PacifiCorp Hunter Plant Groundwater Monitoring plan and in accordance with §257.90 through §257.98.

It is anticipated that the post-closure activities will be conducted for a period of 30 years following the completion of the closure construction in accordance with §257.104(c) Post-closure care requirements.

2.2 Post-Closure Contact

As required by §257.104(d)(1)(ii), the responsible individual to contact to inquire about the facility is:

Laren Huntsman, Plant Manager
Hunter Plant
(425) 748-6211
laren.huntsman@pacificorp.com

2.3 Post-Closure Land Use

During the post-closure period, the CCR landfill will only be used as a covered landfill and has no other planned uses.

2.4 Post-Closure Plan Amendments

As per §257.104(d)(3), this plan will be amended whenever:

- There is a change in operation of the CCR unit that would substantially affect the written post-closure plan.
- After post-closure activities have commenced, unanticipated events necessitate a revision of the written post-closure plan.

3.0 REFERENCES

PacifiCorp, 2003. Combustion Waste Landfill Operations Manual. PacifiCorp Electric Operations, Hunter Power Plant, Castle Dale, Utah, 2003.

URS, 2015a, Hunter Power Plant, CCR Landfill Draft Basis of Design Memorandum, November 2015.

URS, 2015b, Hunter Plant PacifiCorp CCR Landfill Design Documents (December 2015).

U.S. Environmental Protection Agency, 2015. Disposal of Coal Combustion Residuals from Electric Utilities – 40 CFR §257. Federal Register 80, No. 74, April 17, 2015.

URS
756 E. Winchester St. Suite 400
Salt Lake City, UT 84107
O 801-904-4000
F 801-904-4100