

CCR Rule – Siting Criteria

§257.61 Wetlands

Naughton Power Plant – FGD Pond 4

Prepared by:



Prepared for:



Naughton Power Plant

September 10, 2018

PROFESSIONAL ENGINEER CERTIFICATION

I hereby certify, as a Professional Engineer in the State of Wyoming, that the information in this document was assembled under my direct supervisory control. This report is not intended or represented to be suitable for reuse by PacifiCorp or others without specific verification or adaptation by the Engineer.

I hereby certify as a Professional Engineer in the State of Wyoming that this report has been prepared in accordance with and meets the requirements of 40 Code of Federal Regulations §257.61. Naughton Power Plant FGD Pond 4 meets location criteria for Wetlands.

9/12/2018

Britt Siddoway, P.E.

Date

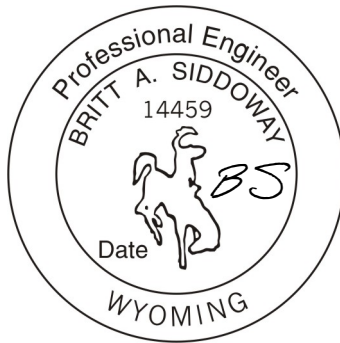


TABLE OF CONTENTS

PROFESSIONAL ENGINEER CERTIFICATION	i
1.0 INTRODUCTION.....	1
2.0 EXISTING CONDITIONS.....	1
3.0 WETLANDS EVALUATION	1
4.0 CONCLUSIONS	1
SOURCES.....	2
REVISIONS	3

List of Figures

Figure 1	Naughton FGD Pond 4 Location Map
Figure 2	Wetland Map

1.0 INTRODUCTION

The PacifiCorp Naughton Power Plant is located approximately three miles southwest of Kemmerer, Wyoming. This report addresses the requirements of §257.61 – Wetlands, as it pertains to FGD Pond 4 at the Plant. This report focuses on the current operating conditions of FGD Pond 4.

Specifically, §257.61 indicates the pond must not be located within wetlands as defined by §232.2 unless the requirements of §257.61 paragraphs (a)(1) through (5) are met.

2.0 EXISTING CONDITIONS

The Naughton Power Plant is located in Lincoln County, Wyoming, approximately three miles southwest of Kemmerer. The plant is west of Highway 189, south of Highway 30, and east of the Kemmerer Incorporated (Westmoreland) coal mine. The FGD Pond 4 unit is located in portions of Section 1 of T20N R117W and Section 33 of T21N R116W. A site map of the FGD Pond 4 location is shown on Figure 1.

The Naughton Power Plant was constructed in 1963 with the commissioning of Unit 1. Over the next 8 years, two more units were added (Units 2 and 3) in October 1968 and October 1971, respectively. Units 1 and 2 deposit CCR into the Naughton South Ash Pond unit by means of gravity flow slurry. Unit 3 deposits CCR into the Naughton North Ash Pond unit by means of gravity flow slurry. Both the North and South Ash Pond units were expanded to their current configuration in 1993. FGD waste produced from Units 1, 2, and 3 is conveyed to FGD Pond No. 4 (FGD-4), which was placed into service in 2010.

FGD Pond 4 is a single source impoundment, receiving only process water from the flue gas scrubbers located in power generating Units 1, 2, and 3. The FGD waste produced by the scrubbers contains sulfur dioxide that is captured through chemical processes which involve spraying a limestone slurry mixture in to the plant's absorber before the flue gas can reach the stack. The excess water in the FGD slurry evaporates off, allowing for additional room in the Pond. FGD Pond 4 was designed to have a storage capacity of 1,407 acre-feet. As water evaporates off of the pond, additional FGD waste will be added until the pond fills with solids and will be capped when capacity is reached.

3.0 WETLANDS EVALUATION

The Naughton FGD Pond 4 is located in area with no visual indications of potential wetlands within the pond area prior to construction. Data layers from the National Wetlands Inventory (NWI) were examined for the presence of wetlands. The CCR Rule wetland siting criteria does not apply to access roads or pipelines. Figures 1 and 2 represent the results of the wetland interactions with FGD Pond 4.

4.0 CONCLUSIONS

The Naughton FGD Pond 4 meets the requirements of §257.61 – Wetlands, for an existing CCR surface impoundment.

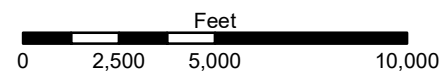
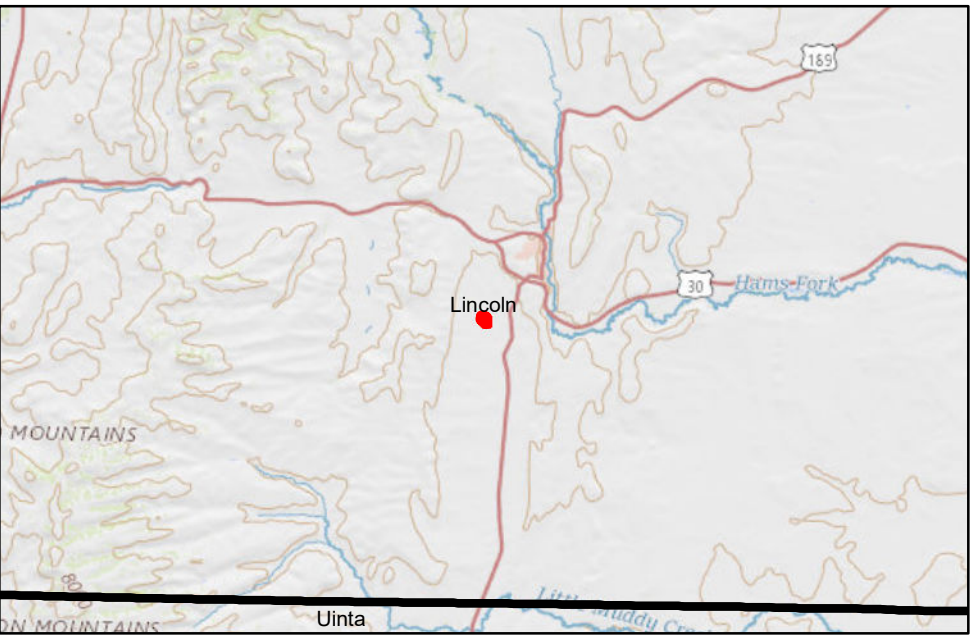
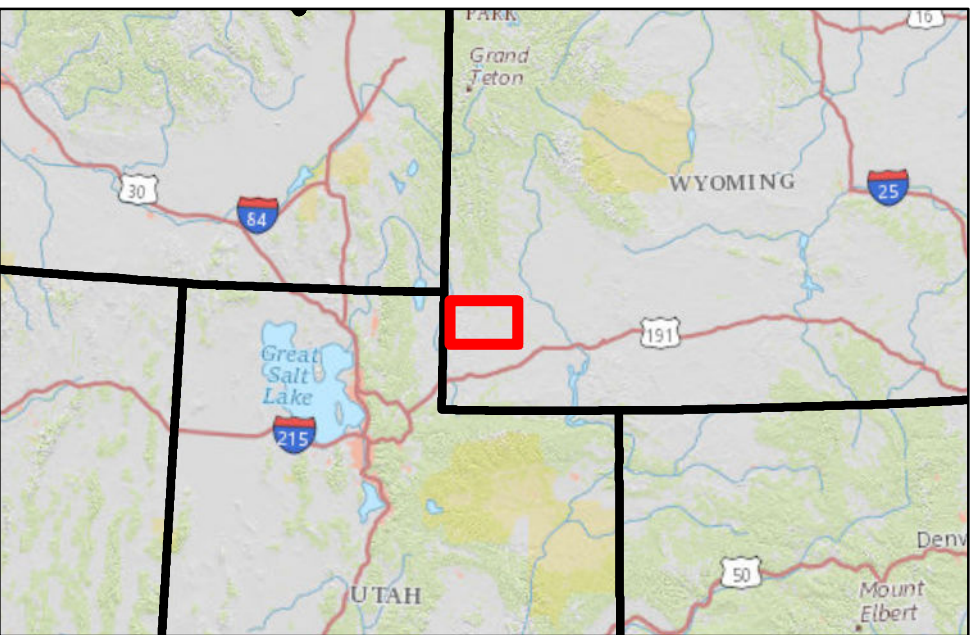
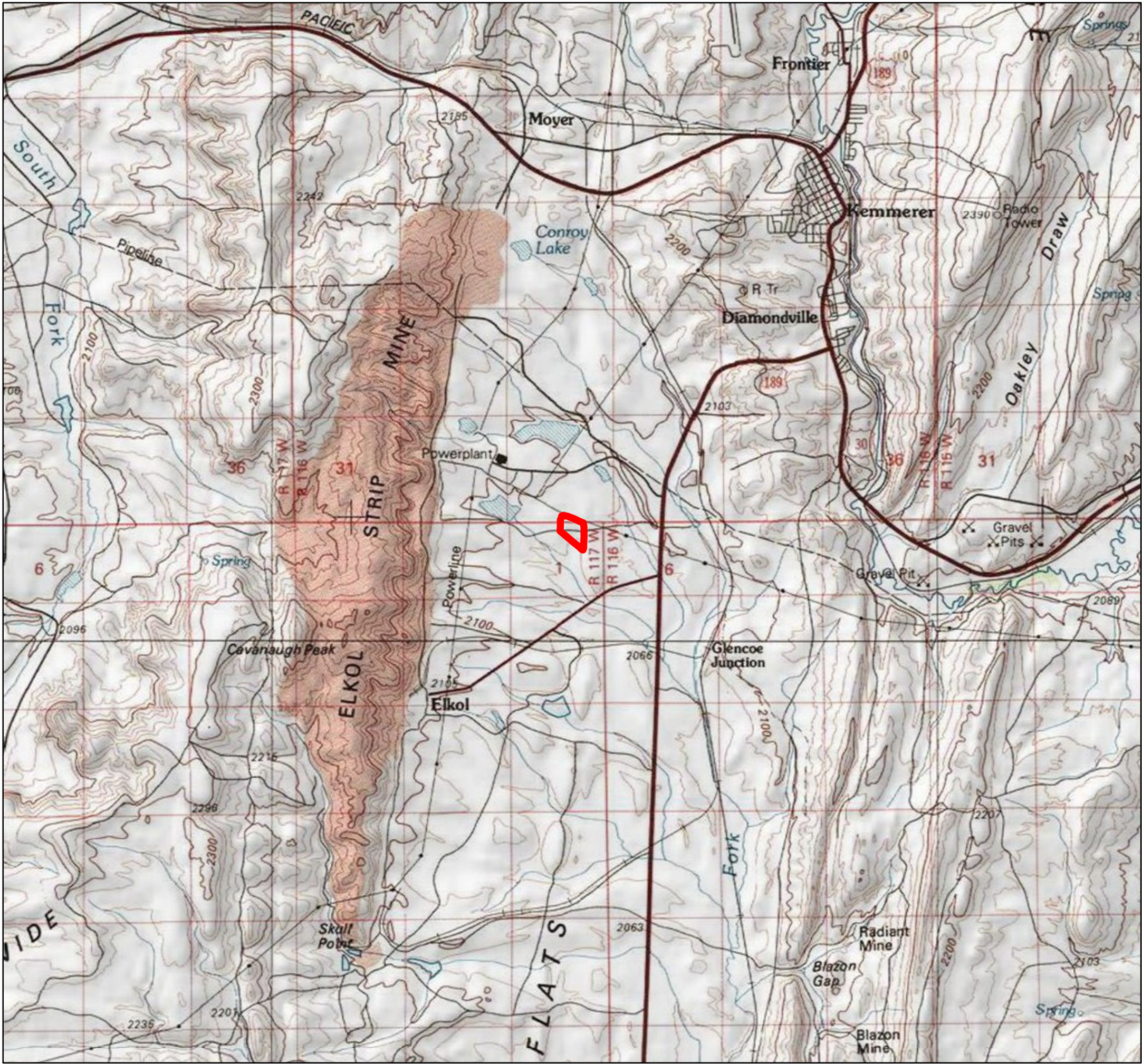
SOURCES



USEPA, 2015. 40 CFR Parts 257 and 261, Hazardous and Solid Waste Management System; Disposal of Coal Combustion Residuals from Electric Utilities; Final Rule. April 17, 2015. 201 pp.

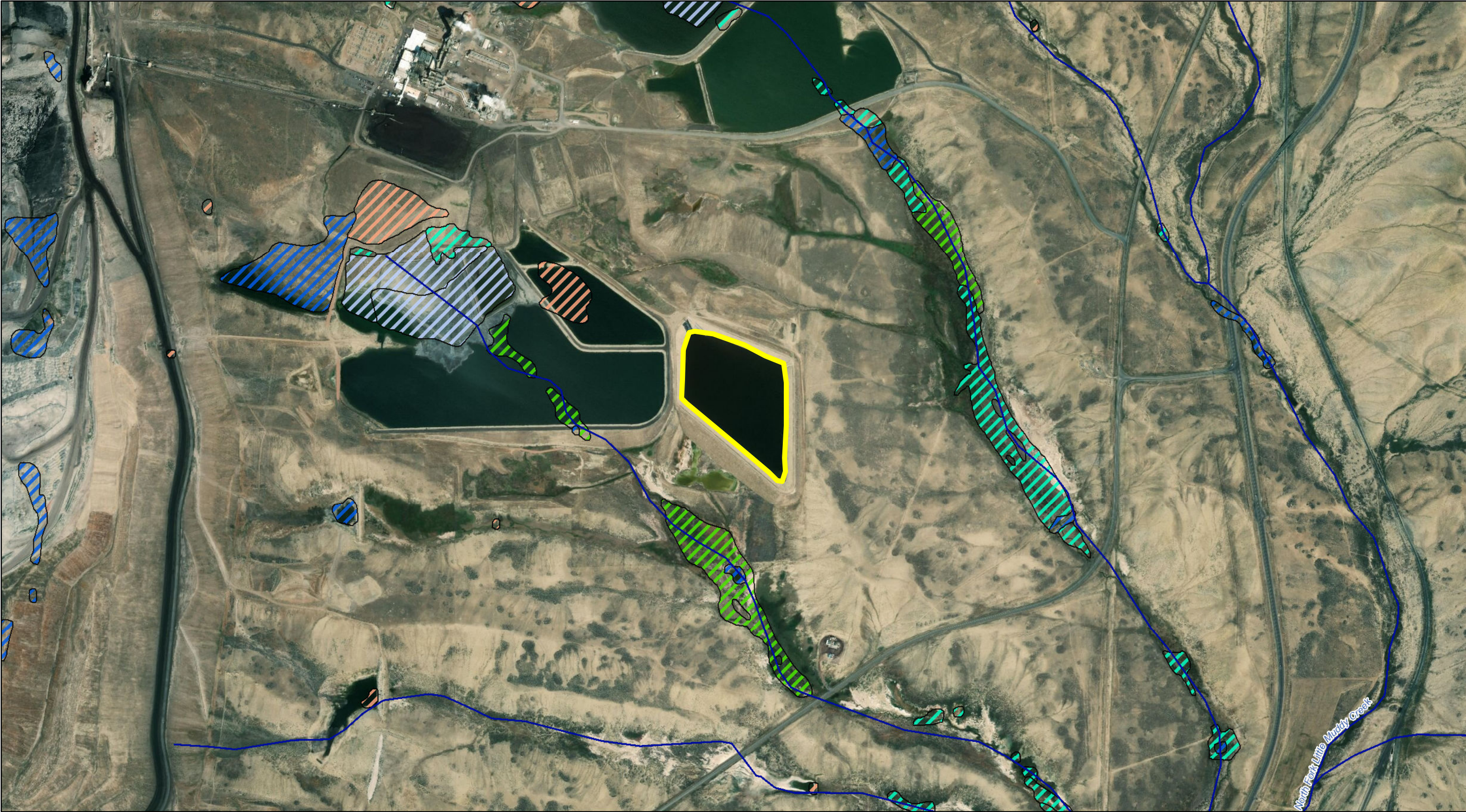
REVISIONS

Revision Number	Date	Revision Made (description)	By Whom
0	9/10/2018	Initial Issue	WET

FIGURES



 	NAUGHTON POWER PLANT	
	FGD Pond 4	
	Job#: PERCM90	FIGURE 1
	Date: 8/15/2018	
<small>Path: M:\PERC_CCR\PERCM90\vicinitymaps.mxd, Author: jefprose</small>		



Legend

CCR UNIT

Flowlines

Other

Artificial Path

Canal/Ditch

Coastline

Connector

Pipelines

Stream/River

WETLAND TYPE

Freshwater Emergent Wetland

Freshwater Forested/Shrub Wetland

Freshwater Pond

Lake

Other

Riverine

NAUGHTON POWER PLANT

FGD Pond 4 Wetlands

Job#: PERCM90

Date: 8/15/2018

Path: M:\PERC_CCR\PERCM90\wetlands.mxd, Author: jleprosse

FIGURE 2