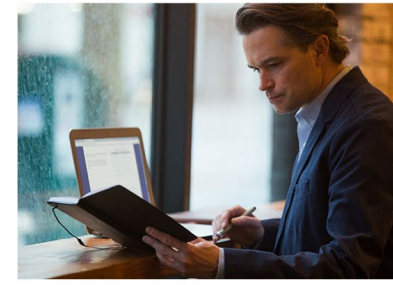


Clean Energy Transformation Act

Washington Equity Advisory Group (EAG)

April 2024 Meeting

April 11, 2024



Washington Equity Advisory Group

1:00-4:00 pm PT, April 11, 2024

For a Better Meeting Experience



Use Gallery View (icon at top right) when in group discussion



For technical support, chat "Tag Galvin-Darnieder/ E Source" as recipient and send your message



Questions are welcome at any time
Please mute until speaking
Speak by clicking the "Raise Hand" in the tool bar

Agenda

TIMING	TOPIC
1:00pm	Objectives & Presenters
1:10pm	Check In
1:20pm	Closing the Loop & Circle Back on Last Month's Activity
1:30pm	Introduction to Distribution System Planning (DSP)
2:00pm	Break
2:10pm	Emergency Management & Preparedness
3:00pm	Integrated Resource Planning Update
3:15pm	Regulation Updates
3:25pm	General Updates
3:35pm	Public Comment
3:45pm	Check Out, Summary & Next Steps

Today's Objectives

Pacific Power's Equity Advisory Group

To establish a cleaner and more equitable electricity system for Washington, PacifiCorp formed its EAG. The EAG is intended to elevate issues of energy equity in the planning process by providing a seat at the table to affected communities. Members of the EAG are community leaders supporting underserved populations, and they provide insights into the lived experiences of Washington communities.

1. Present Prioritization Activity Results
2. Introduce Distribution System Planning (DSP)
3. Learn about Emergency Management & Preparedness
4. Communicate Integrated Resource Planning, Regulation and General Updates

Presenters



Randy Baker
PacifiCorp
Director of Resource
Planning



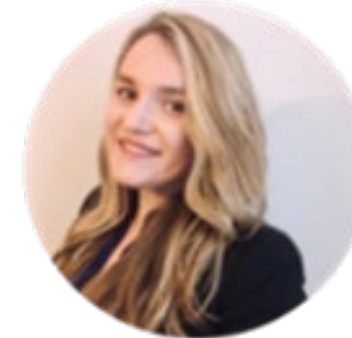
Horace Ward
PacifiCorp
Senior Emergency Management
Specialist




Jeffrey Daigle
E Source Facilitator



Ian Hoogendam
PacifiCorp
Distribution System
Planning Manager




Morgan Westberry
E Source Facilitator



Kimberly Alejandro
PacifiCorp
Equity Advisory Analyst



Stephanie Meeks
PacifiCorp
Regulatory Manager




Zanya Morgan
E Source Facilitator

Check-In

Check In Question

What is a book, film, or song that means a lot to you?



Community Calendar

APRIL 2024

SUNDAY	MONDAY	TUESDAY	WEDNESDAY	THURSDAY	FRIDAY	SATURDAY
31	1	2	3	4	5	6
7	8	9	10	11	12	13
				<u>ONLINE- Pacific Power's Equity Advisory Group Meeting 1pm - 4pm</u>		<u>2024 Arbor Fest FlowerPower @ Yakima Area Arboretum 10am - 3pm</u>
14	15	16	17	18	19	20
						<u>Earth Day in Cowiche Canyon 10am - 12:30pm</u>
21	22	23	24	25	26	27
<u>Dozer Day One @ Yakima Fairgrounds Quiet Hours 10am - 11am Regular Event Hours 11am - 3pm</u>	<u>Dozer Day Two @ Yakima Fairgrounds Quiet Hours 10am - 11am Regular Event Hours 11am - 3pm</u>					<u>Persistent Local Market @ The Showroom on Colville 10am - 2pm</u>
28	29	30	1	2	3	4
5	6	Notes	<u>April 13 - Sustainable Watersheds @ Bennington Lake Recreation Area 1pm - 2:30pm</u>			
			<u>April 20 - Yakima Earth Day @ Sarg Hubbard Park 9am-3pm</u>			

MAY 2024

SUNDAY MONDAY TUESDAY WEDNESDAY THURSDAY FRIDAY SATURDAY

28	29	30	1	2	3	4
		Pacific Power Community Visits with the Equity Advisory Group	Pacific Power Community Visits with the Equity Advisory Group	Pacific Power Community Visits with the Equity Advisory Group		Walla Walla Downtown Famers Market @ Farmers Market Pavilion 9am - 3pm
5	6	7	8	9	10	11
						Walla Walla Downtown Famers Market @ Farmers Market Pavilion 9am - 1pm
12	13	14	15	16	17	18
Downtown Yakima Farmer's Market @ Rotary Marketplace 9am-1pm				Chamber Café Agriculture, Agribusiness & Agritourism @ Walla Walla Chamber 8:30am - 9:45am		Walla Walla Downtown Famers Market @ Farmers Market Pavilion 9am - 1pm
19	20	21	22	23	24	25
Downtown Yakima Farmer's Market @ Rotary Marketplace 9am-1pm		PWS Low Water Landscaping @ WWCC Water & Environmental Center 6pm - 8:30pm				Walla Walla Downtown Famers Market @ Farmers Market Pavilion 9am - 1pm
26	27	28	29	30	31	1
Downtown Yakima Farmer's Market @ Rotary Marketplace 9am-1pm						

5 6 Notes

Closing the Feedback Loop

Closing the Loop

March Themes:

- Reviewed regulation updates and pathway to non-emitting by 2045
- Provided energy efficiency updates based on preliminary results from 2023 CBI metrics
- Introduced new home energy savings Pilot
 - Tree Planting Conservation program

March Feedback Highlights:

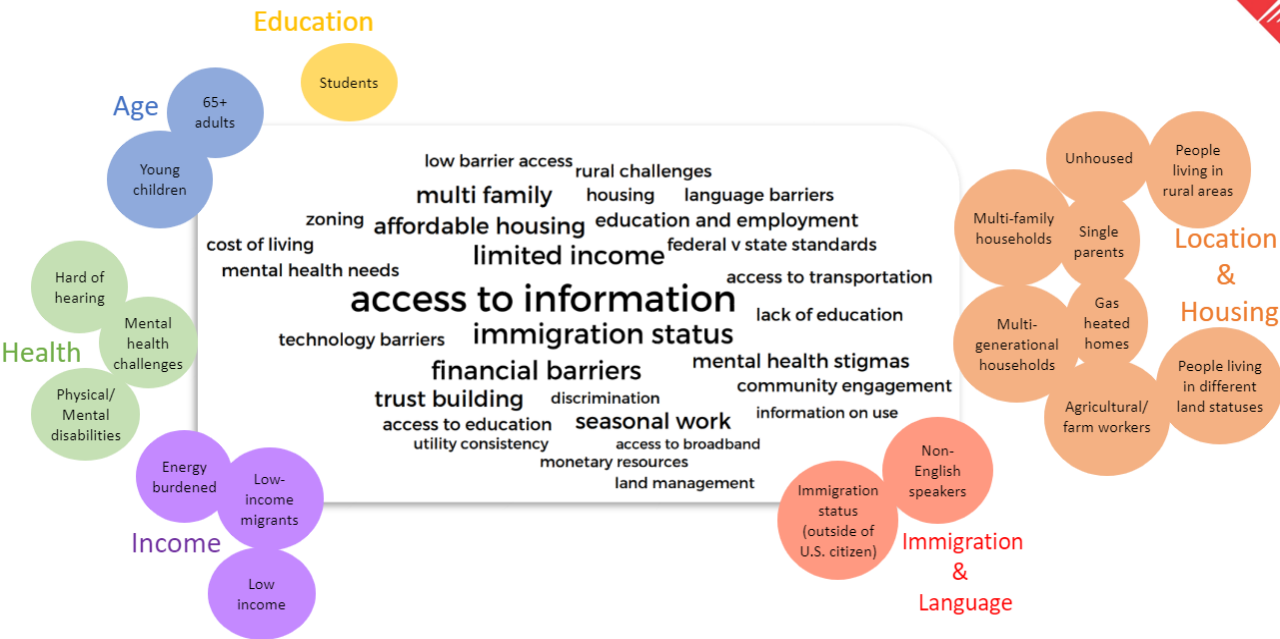
- Guided activity revisiting community priorities, ranking least to most important concerns
- How is accessibility being considered in Transportation Electrification
- Intersectionality between broadband, economic vitality and equal access
- Meeting participants want to continue building psychological safety and trust between PacifiCorp and service communities

Impacts:

- Circled back on the topic of Transportation Electrification, highlighting new barriers not previously addressed
- Using members feedback to update interim targets and clarify metrics
- Ongoing planning of the EAG space to incorporate new voices and shifting priorities

Last Month's Activity: Revisiting Community Priorities

2021...



2024....



Top Community Issues Mentioned

A

Discrimination

B

Access to information

C

Technology challenges and access to broadband

Introduction to Distribution System Planning (DSP)

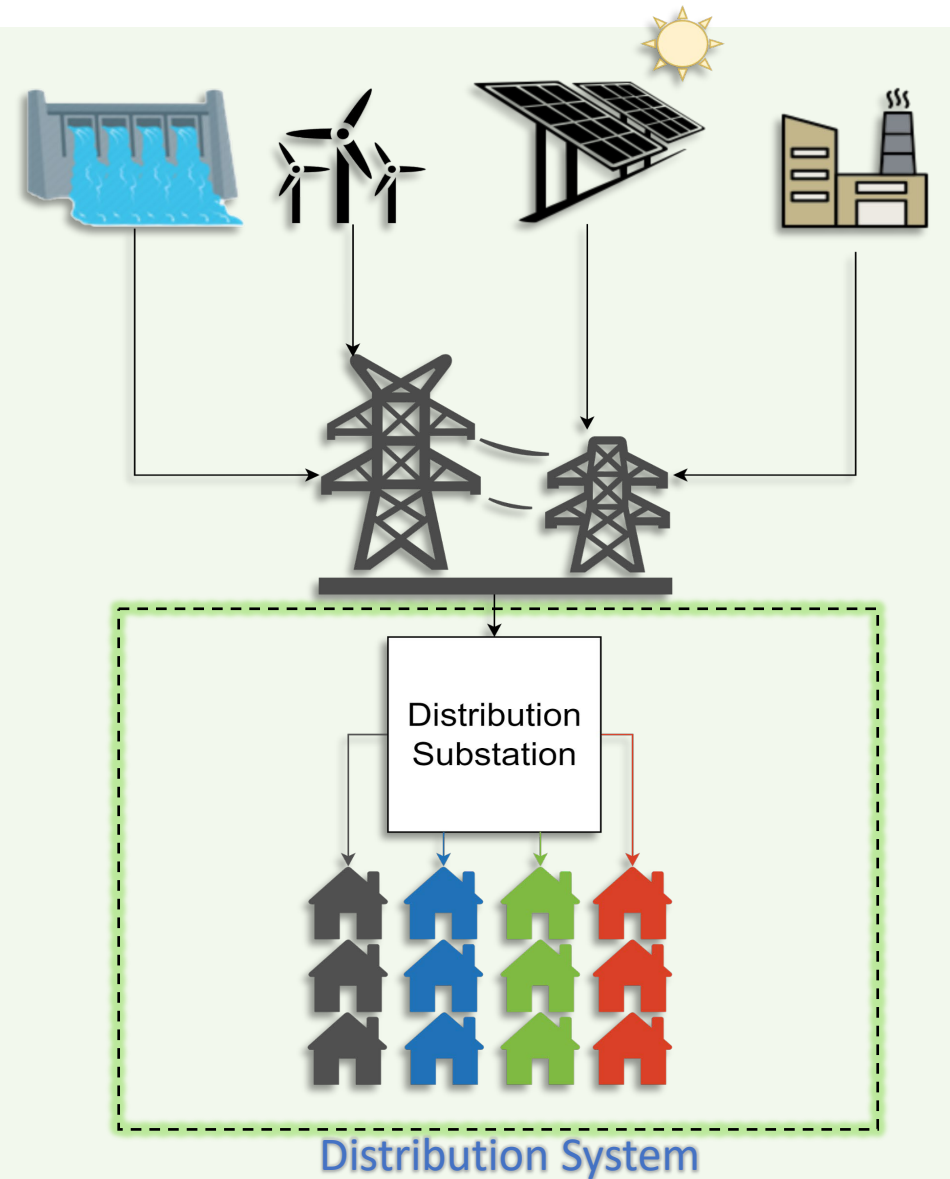
Electric Grid Overview

Generation and Transmission System

- Generates power from various resources
- Transmission lines transmits power from generation plants to distribution substations

Distribution System

- Starts at distribution substation and ends at customer meter
- Delivers power to consumers via poles and wires(overhead and underground)



What is Distribution System Planning (DSP)?

What is DSP?

- Advancements to traditional DSP based on the capabilities and needs of the modern grid
- Increased transparency of DSP processes to meet the needs and leverage the capabilities of the modern grid

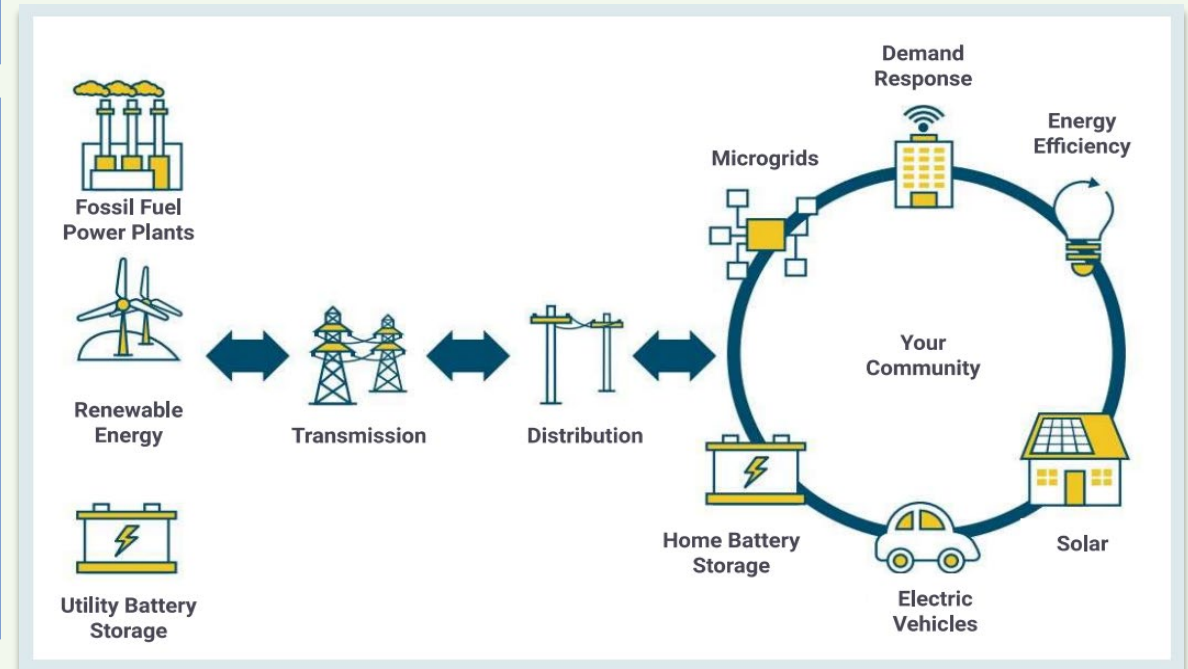
Key Changes to Traditional DSP

- Evaluation of nontraditional solutions to address grid needs
- Increased community engagement
- Enhanced forecasting:
 - 24-hour load profiles
 - Inclusion of incremental electric vehicle (EV) and solar adoption rates

Past Grid



Modern Grid



Washington Baseline Overview



Distribution System

- Substations: 33 substations
- Circuits: 140 (urban suburban rural counts)
- Line miles (sum of pole-to-pole distance):
 - Overhead: 3,363
 - Underground: 751

Customers

- Residential: 114,450
- Commercial: 17,833
- Irrigation: 5,040
- Industrial: 479

Other Characteristics:

- SCADA Coverage: 53% of circuits, 66% of substations
- No Advanced Metering Infrastructure (AMI)
- Net Metered DER Capacity: ~42 MW

General Drivers for Load Growth



Commercial/Industrial Development



Population Growth



Heat Electrification



A/C Adoption



Rising Costs



Weather/Climate



**Economic Output
(Gross County Product)**



Technology

Traditional Solutions: *Poles, Wires, Equipment*

Equipment Upgrades

- Increase capacity of system equipment

New Equipment

- New equipment to address voltage/protection needs or facilitate load transfers

New Substations and Circuits

- Sometimes required in conjunction with other traditional solutions

Load Transfers

- Transfer load to circuits with spare capacity

Phase Balancing

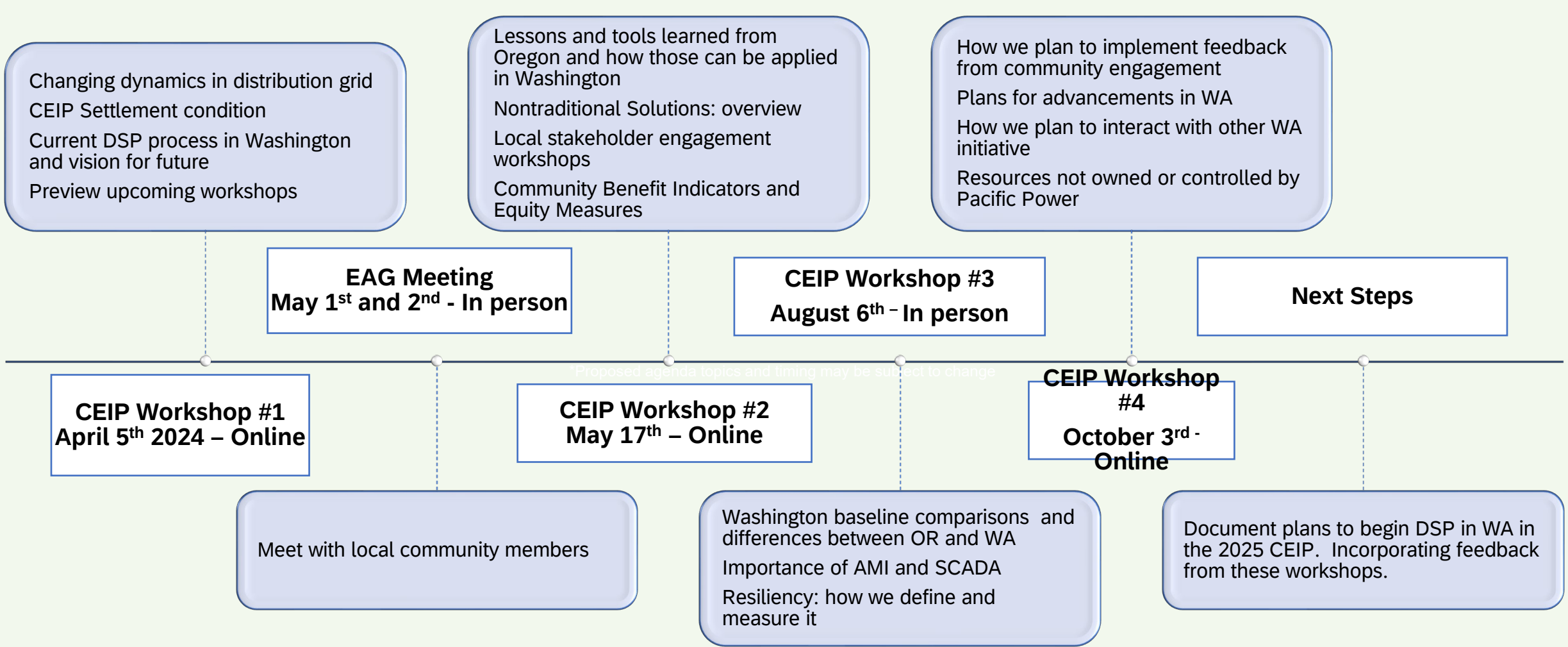
- Balancing load among circuit wires

Settings Changes

- Update equipment settings to ensure safe and reliable service for expected loading conditions



*2024 WA Distribution System Planning Engagement



Break

Emergency Management & Preparedness



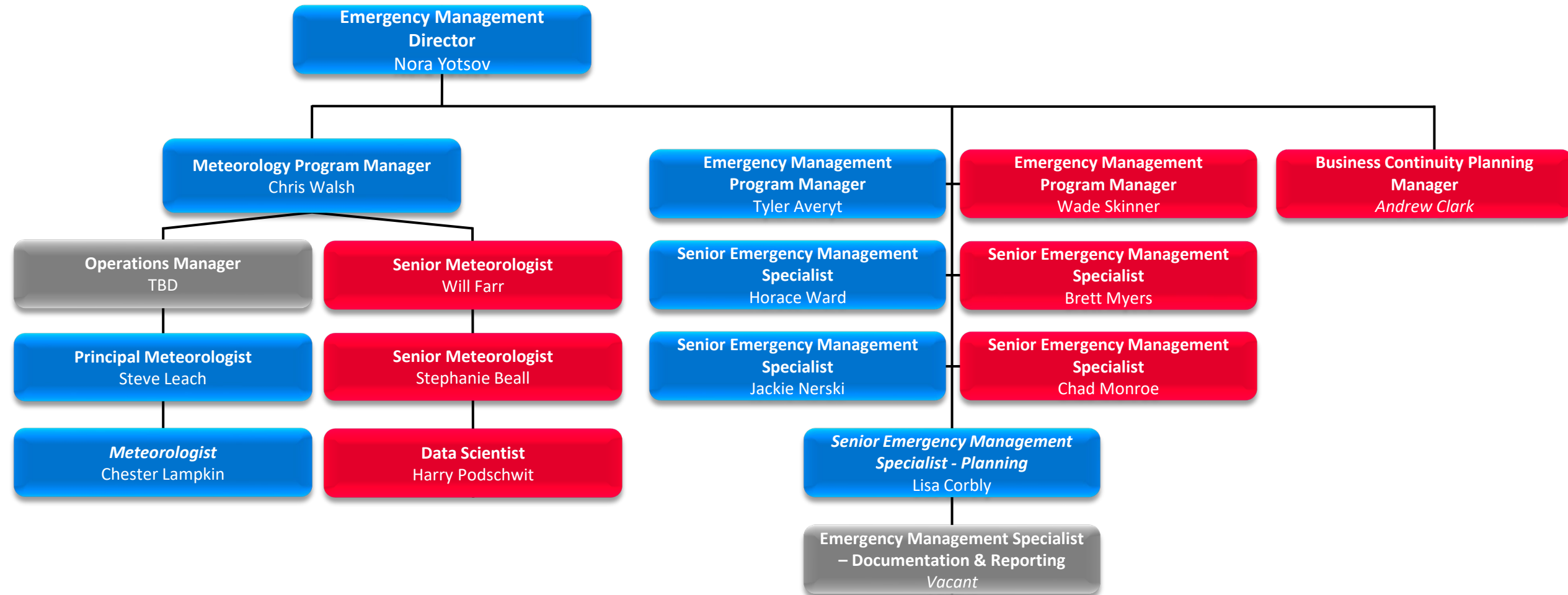
Senior Emergency Management Specialist

Experience

- Started at PacifiCorp in 2021
- Yakima Valley Emergency Management – Operations Manager
 - Landslides, HazMat, Wildfires, Flooding, Active Threats, Radiological Incidents, Aircraft incidents, Severe Weather
- Granite Construction – Quality Assurance
- Cubcrafters – Systems Installation
- Washington Conservation Corps – Assistant Supervisor
 - Fire fuels management
 - Restoration and conservation
 - Disaster response
 - Local floods & fires
 - 2011 Missouri tornadoes



The Team



Why Prepare?

To put it simply, you are more likely to be impacted by a natural or man-made disaster now as the frequency and impacts of disasters continue to grow.

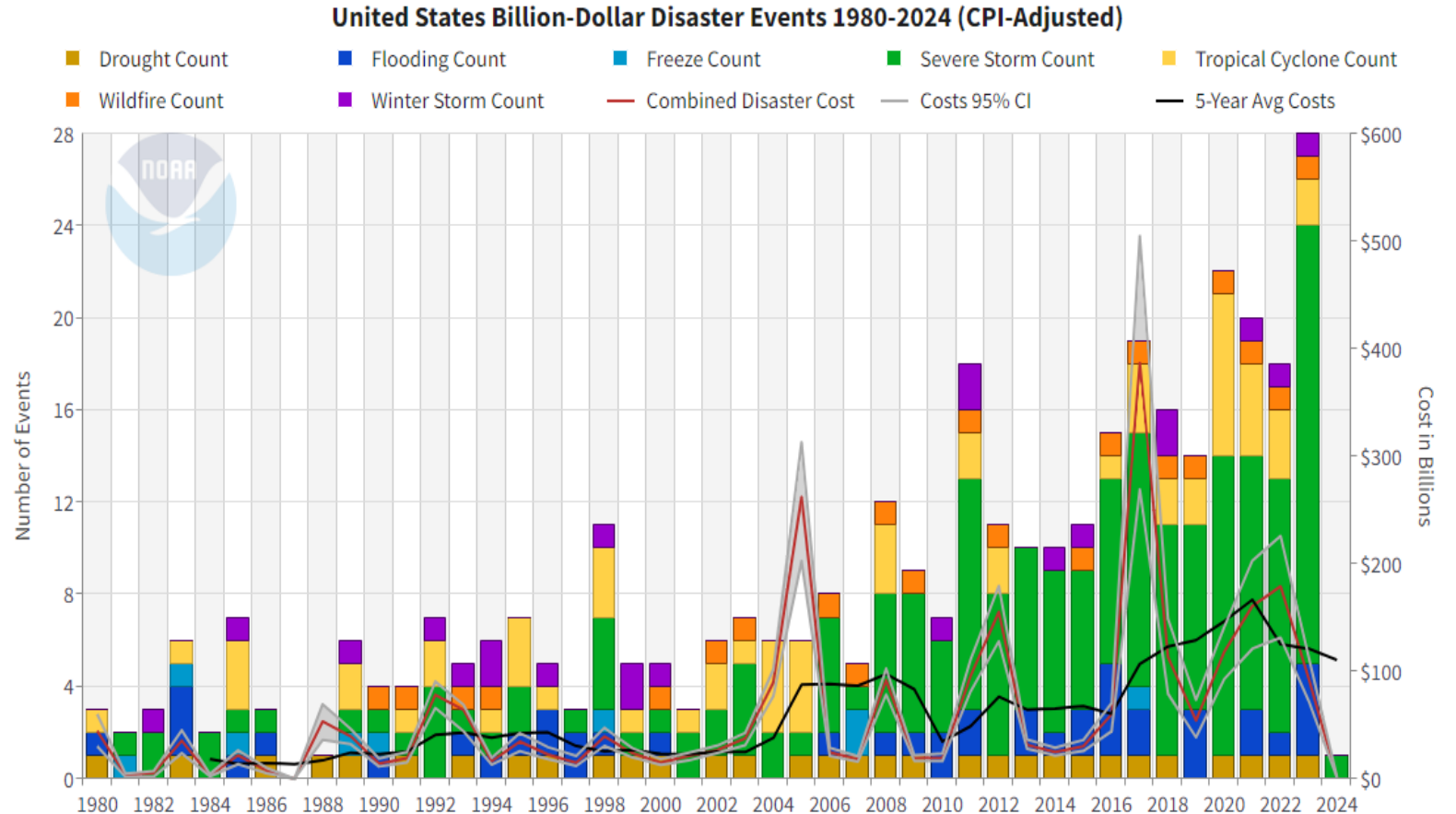


Figure 1., [National Centers for Environmental Information](#)

Mega Fires (more than 100,000 acres) increased fourfold in recent years

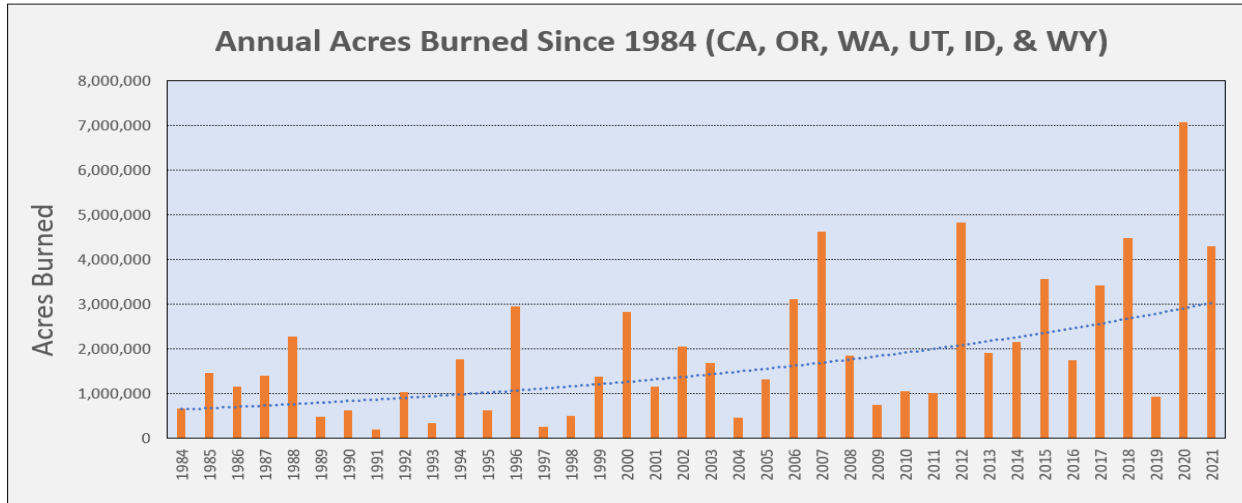
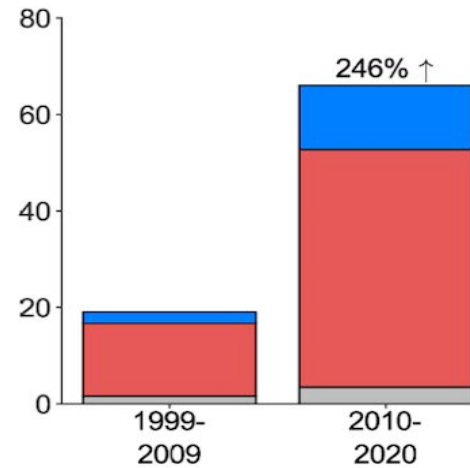


Figure 1., [Six trends to know about fire season in the western U.S. \(nasa.gov\)](#)

Structures lost from wildfire

Figure 2., [Northwest Fire Science Consortium](#)



Why Prepare?

61% of fires since 1950 have occurred between 2000-2017

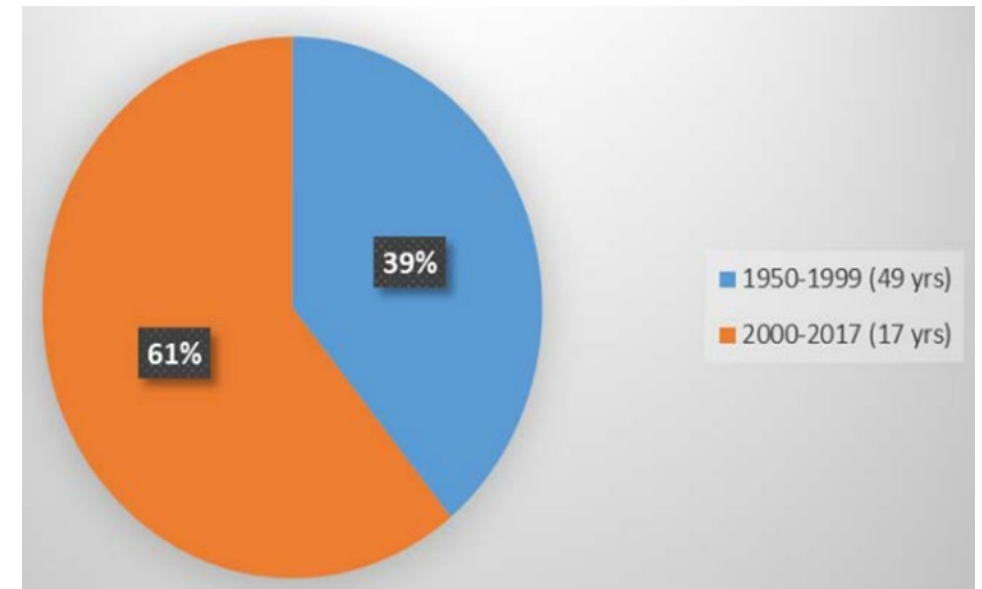


Figure 3., [Science Advances](#)

Personal Preparedness

- **Get Informed**

- Learn more about the types of disaster that could affect you and how you might prepare for them.

- **Make a Plan**

- How will I receive emergency alerts and warnings?
- What is my shelter plan?
- What is my evacuation route?
- What is my family/household communication plan?
- Do I need to update my emergency preparedness kit?

- **Build a Kit**

- After an emergency, you may need to survive on your own for several days. Being prepared means having your own food, water and other supplies to last for several days. A disaster supplies kit is a collection of basic items your household may need in the event of an emergency.

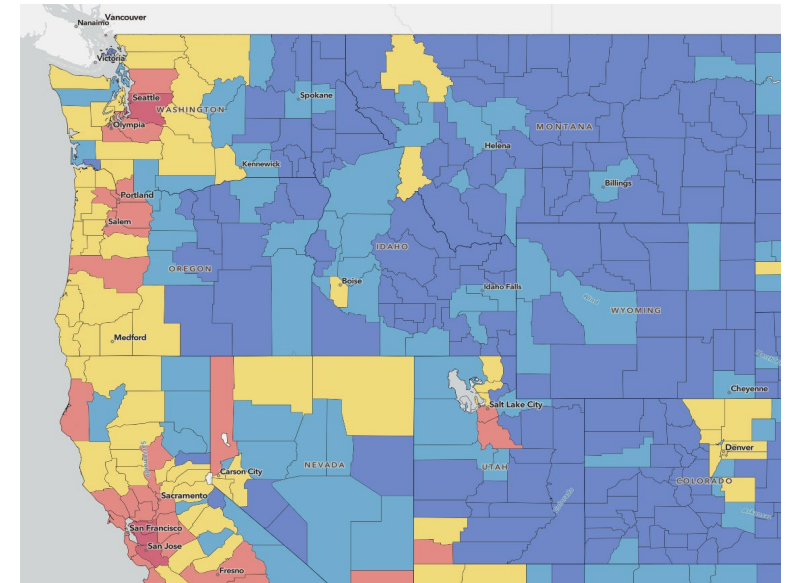


Figure 1.

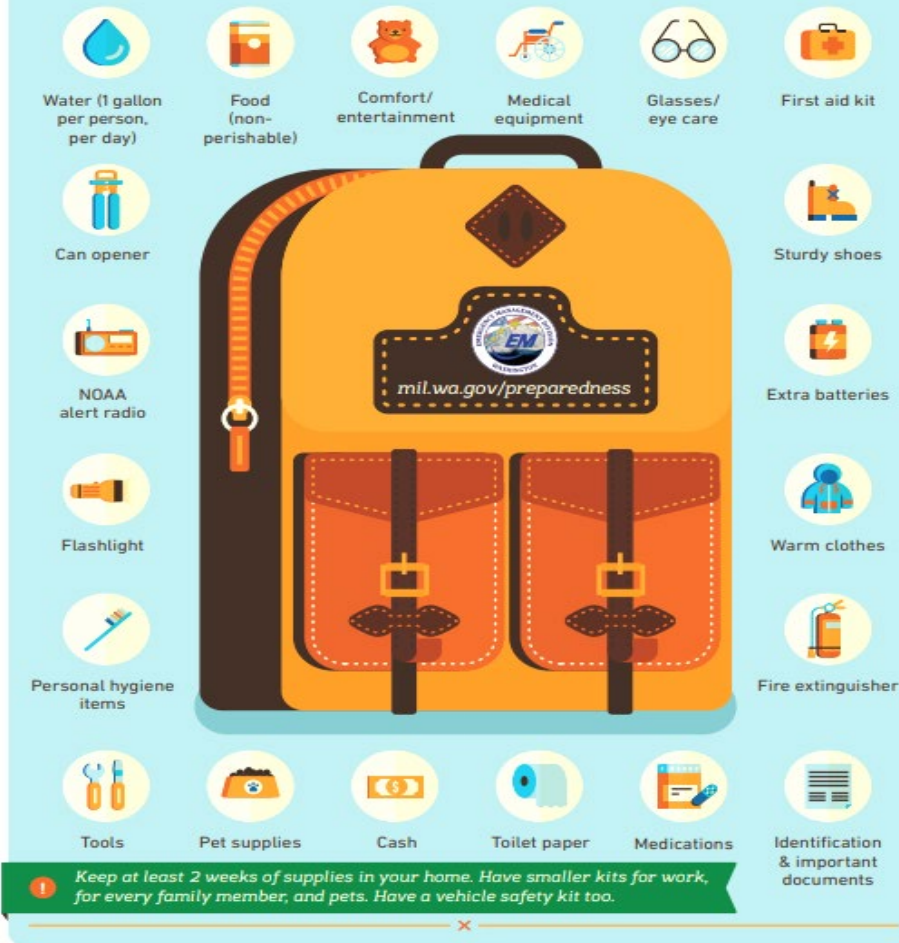


Figure 2.

2 WEEKS READY

BUILD KITS

Plan to be on your own for at least 2 weeks



Personal Preparedness

Resources:

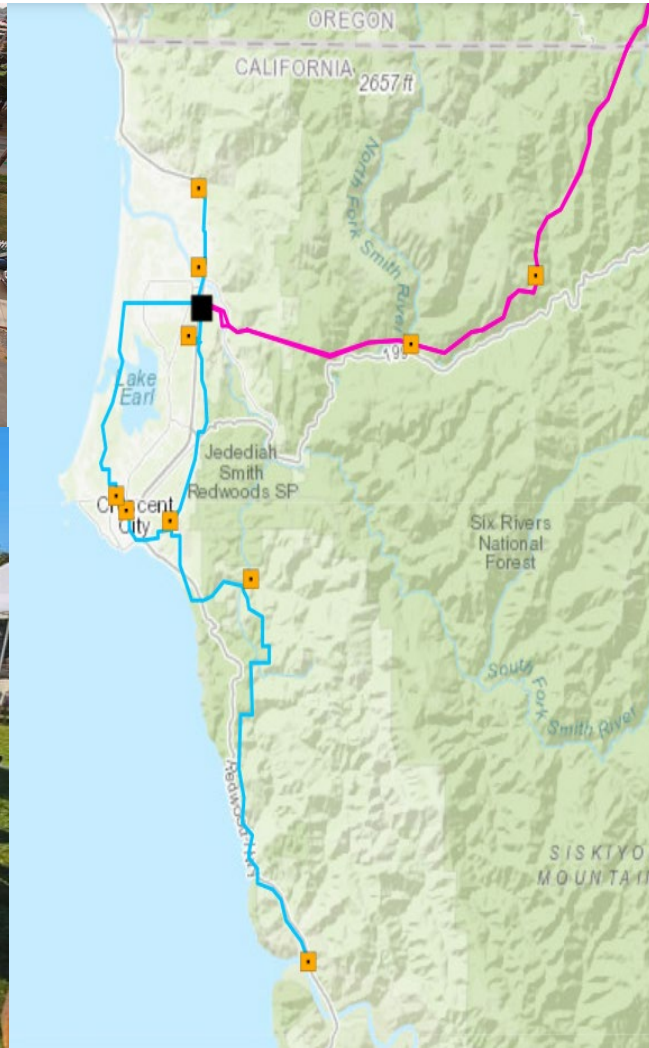
1. Washington State Emergency Management Association: [WSEMA – Washington State Emergency Management Agency](https://www.wsema.org/)
2. Washington State Emergency Management Division:
 - English: [Emergency Management Division | Washington State Military Department, Citizens Serving Citizens with Pride & Tradition](https://www.wa.gov/emergency-management)
 - Spanish: [División de Manejo de Emergencias | Departamento Militar del Estado de Washington, Ciudadanos al Servicio de Ciudadanos con Orgullo y Tradición](https://www.wa.gov/emergency-management)
3. The Federal Emergency Management Agency: [Home | FEMA.gov](https://www.fema.gov/)

Company Preparedness

- Backup communications
- Emergency Plan Updates
- Working with local emergency management and first responders
- Employee Preparedness Campaign



How it Comes Together



- Community Outreach
- Temporary Generation Capability
 - Smith River Complex



Preparedness in Community

State Fair Park Project – Yakima, WA

- Pacific Power was awarded nearly \$73,000 to investigate the possibilities of a microgrid and a solar/battery storage backup power source to support community and emergency operations at this critical location



2024 Wildfire Mitigation Plan Webinar

Tuesday, April 30, 2024

2-3p PDT, Online

[Register](#)

Recording posted on YouTube



You're invited to find out how Pacific Power is increasing safety and reliability across its Washington service area during wildfire season and year-round. Attend the free event online to:

- Hear how we're adapting to this new era of extreme weather in the areas of meteorology, wildfire mitigation and emergency management.
- Find out how we use advanced forecasting to put us ahead of the weather and hear about our ongoing work to strengthen the electrical grid.
- Learn how Public Safety Power Shutoffs (PSPS), enhanced safety settings and other proactive de-energization methods work.

<https://www.pacificpower.net/community/workshops-events.html>

Integrated Resource Planning (IRP) Update



2023 Integrated Resource Plan Update

April 1, 2024

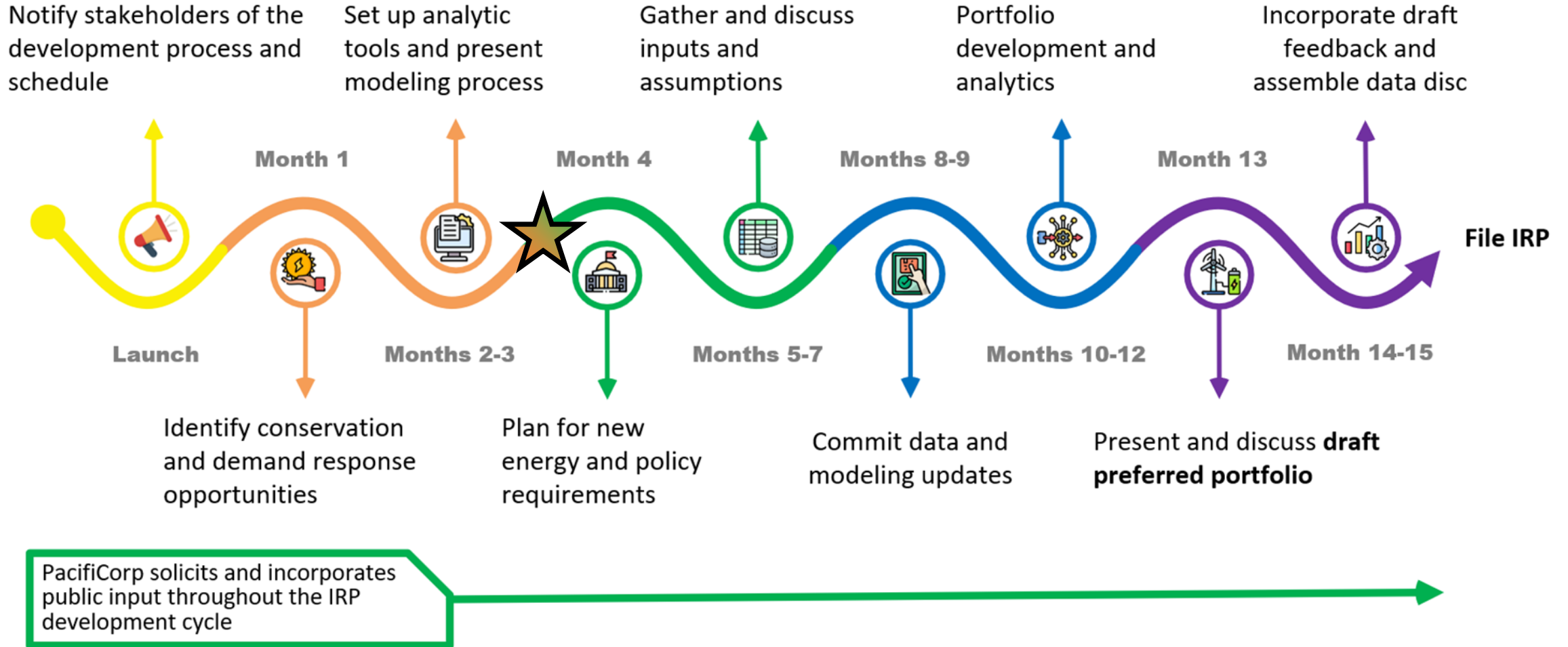
Integrated Resource Plan Update

On April 1, 2024, PacifiCorp issued its 2023 IRP Update as an informational filing in Washington.

The filing updates the Two-Year Progress Report filed May 31, 2023, and describes resource planning activities since that time. The report continues the company's commitment to maintain a long-term resource plan that considers cost, risk, uncertainty, and the long-run public interest.

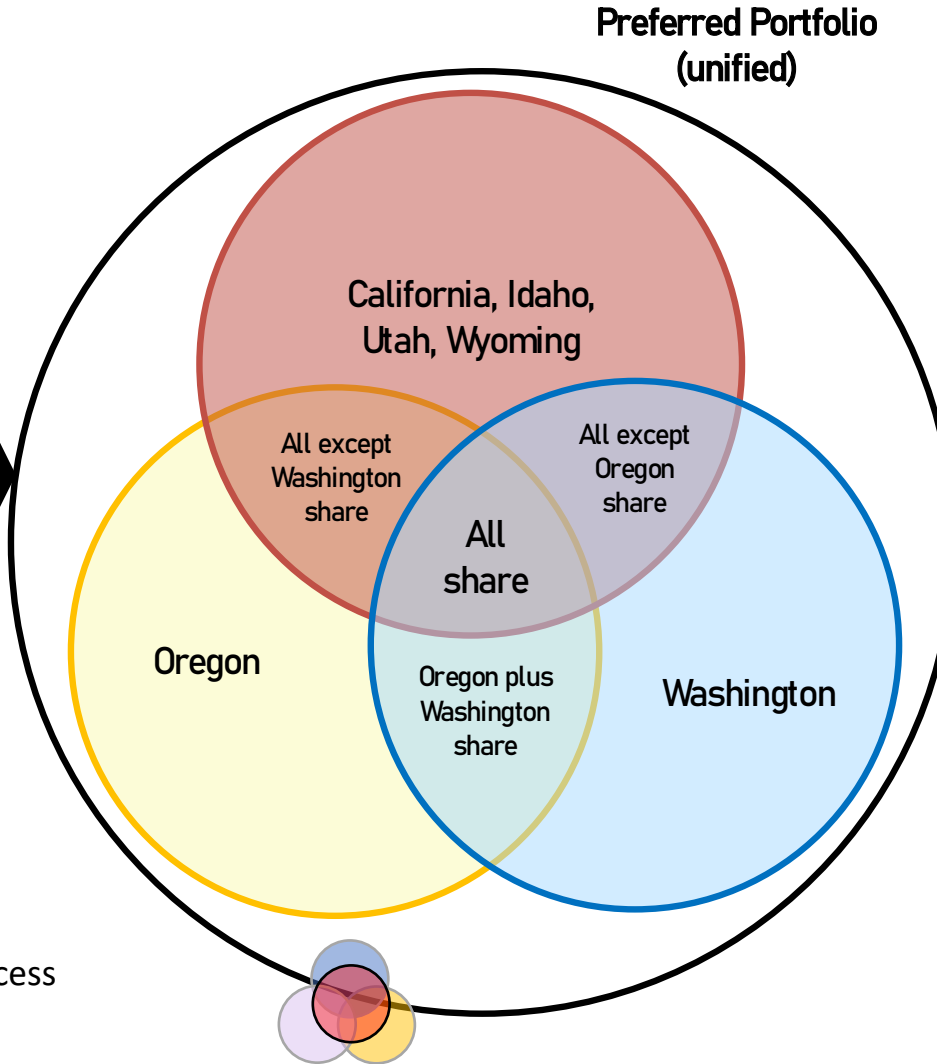
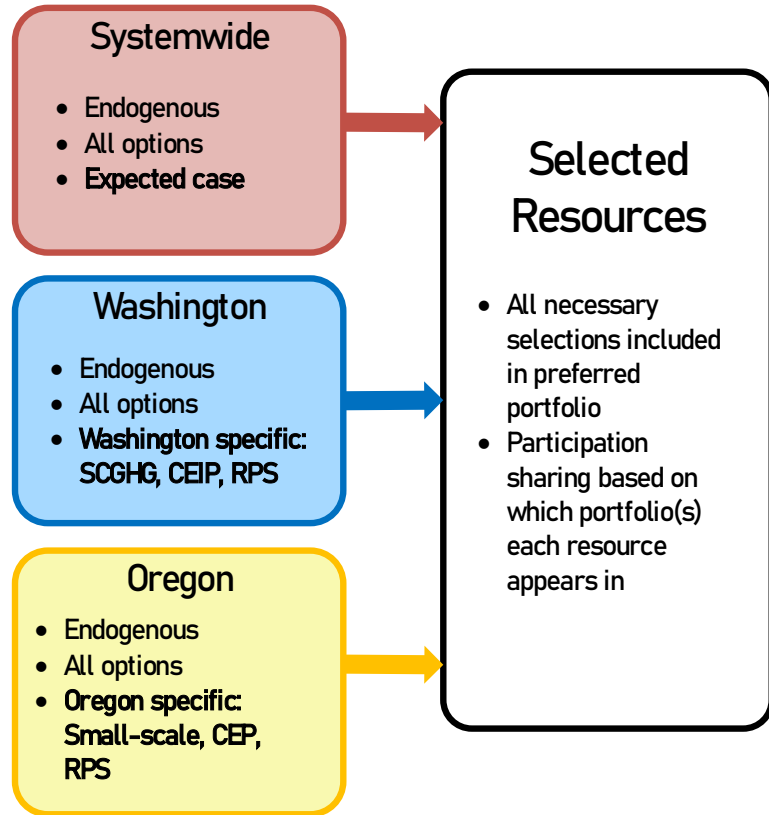
Direct link: [2023 IRP Update.pdf \(pacificorp.com\)](https://www.pacificorp.com/2023_IRP_Update.pdf)

Pacific Power's Integrated Resource Planning Approach



Explaining the "Preferred Portfolio"

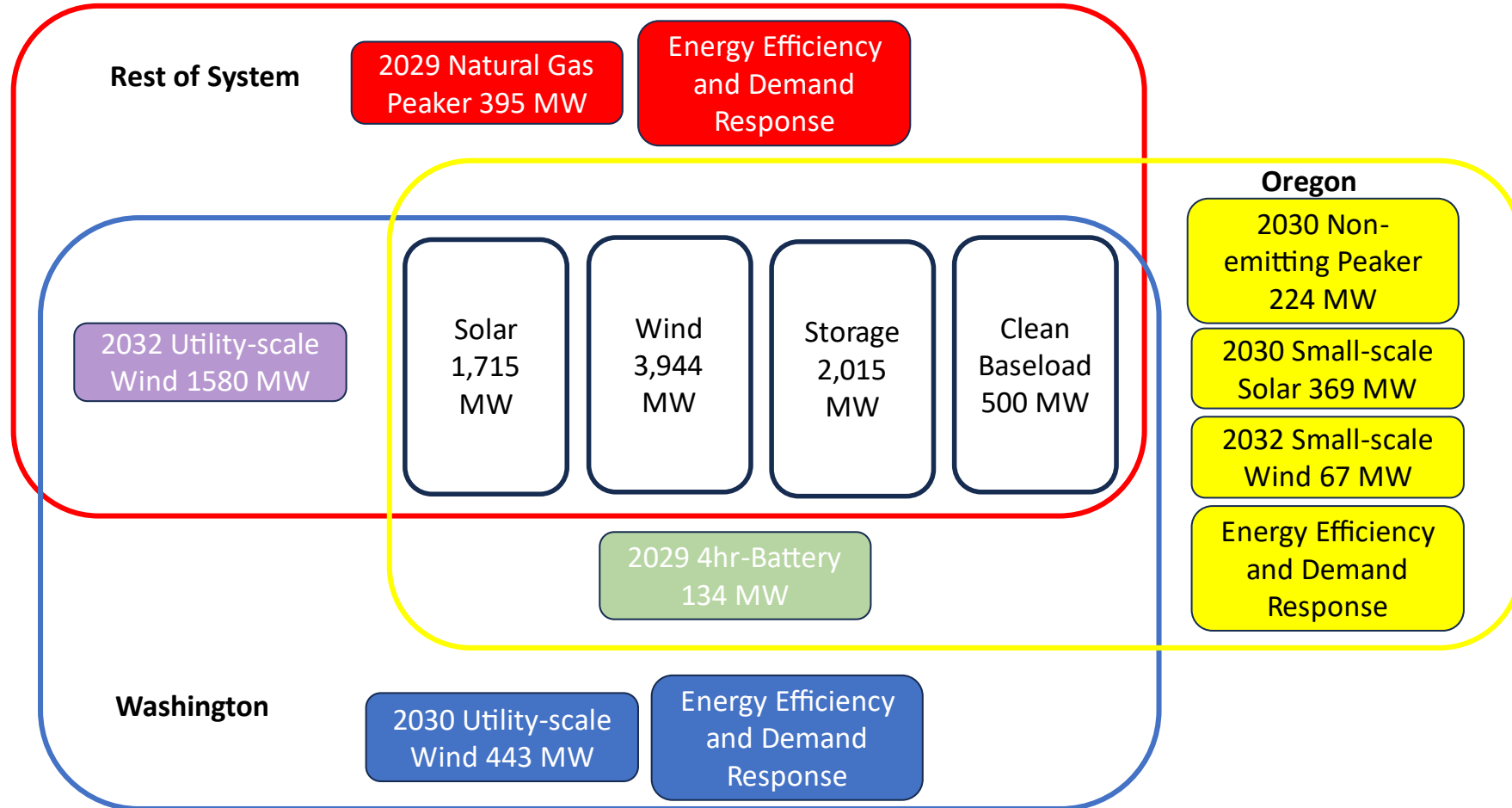
PLEXOS Portfolios



- PLEXOS Optimization**
- modeling software used to develop resource plans (portfolios)
 - **CEIP** Washington's Clean Energy Implementation Plan
 - **CEP** Oregon's Clean Energy Plan
 - **SCGHG** Social cost of greenhouse gases
 - **RPS** Renewable portfolio standards

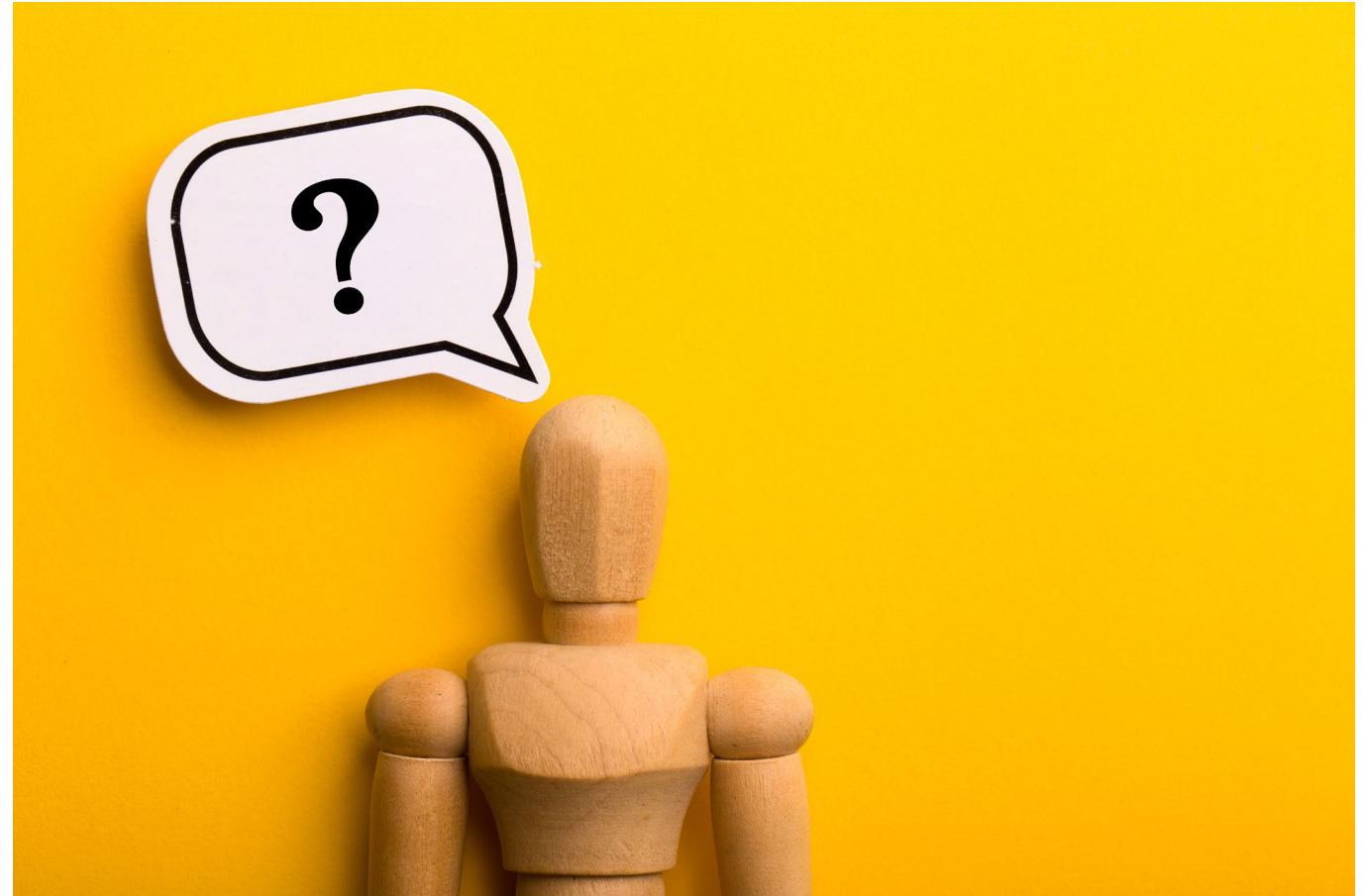
Oregon and Washington sharing is shown, but the process is the same for other states as needed. Showing more states is more difficult to visualize.

2023 IRP Update Preferred Portfolio through 2032



Closing the Loop: Todd's Questions

1. Where does PacifiCorp feel it is in its readiness for the Clean Energy Transformation Act (CETA) 2045 target date?
2. What are the challenges to hitting this clean energy goal?



Regulation Updates

Vulnerable Population Workshops



All are
welcome!

Three Vulnerable Population Workshops consisting of:

- Workshop #1:
 - May 17, 2024, Clean Energy Implementation Plan Engagement Series (3-hour session)
 - The team will table set, providing background information on current methods used to identify Vulnerable Populations in Pacific Power's WA service area
- Workshop #2:
 - August 2024 (2-hour session)
 - The team will walk through Pacific Power's Settlement Condition factors
 - Collaborate with interested persons to develop alternatives and the identification of a preferred methodology to identifying/tracking Vulnerable Populations
- Workshop #3:
 - October 2024 (2-hour session)
 - The team will review results from the workshops and discuss next steps

Settlement Condition 43:

43. Miscellaneous Condition 2. PacifiCorp will include a publicly available and regularly updated list of its EAG members and their organization or community affiliations on its website and in future Biennial CEIP Updates and CEIPs.

Due Date: July 1, 2024, CEIP Annual Progress Report

CEIP – Clean Energy Implementation Plan

Rate Case Acknowledgement

Pacific Power received a response from the Washington Utilities and Transportation Commission (WUTC) on its rate case in [Docket 230172](#)

Pacific Power is still understanding the requirements set by the WUTC and will have a review of those items in a future Equity Advisory Group Meeting.

Furthermore, we anticipate that we will need to schedule time to bring some of the Washington Advisory Groups together to collaborate and work towards shared outcomes and goals.

General Updates

Pacific Power WA Communities Grant Program - Upcoming Events

	Format / Date / Time (PST)
<p>Grantee Peer Roundtable</p> <ul style="list-style-type: none"> • Opportunity to invite potential grantees to learn about past awarded projects in both WA and OR 	<p>Online: April 17, 2024 Start time: 2:30 pm – 3:30 pm Microsoft Teams meeting</p> <p>Join on your computer, mobile app or room device</p> <p>Click here to join the meeting Meeting ID: 258 770 082 133 Passcode: F45m5t Download Teams Join on the web</p> <p>Or call in (audio only)</p> <p>+1 925-421-0866,,596336179# United States, Concord Phone Conference ID: 596 336 179#</p>
<p>Communities Grant Program Webinar</p> <ul style="list-style-type: none"> • Resource Innovations to conduct live training on grant program opportunity and online application platform • Webinar will be recorded and available on the website following the session 	<p>Online: June 4, 2024 Start time: 3:00 pm</p>
<ul style="list-style-type: none"> • Online application goes live 	<p>July 1, 2024</p>

May One on One Community Visits

1. Build upon existing relational partnerships; meeting the Equity Advisory Group members where they are in community
2. Share updates and resources with one another
3. Gain exposure to the different cultures within Pacific Power's service area and through authentic encounters, identify emerging barriers and opportunities to community energy program participation



Public Comment

Washington Equity Advisory Group 2024 Meeting Schedule

Date / Time / Meeting Format

Proposed Agenda Topics*

<p>January 11, 2024 (1pm-4pm) Online</p>	<p>Transportation Electrification New Programs (WA) Residential Demand Response (DR) Program General Rate Case Background Information & Updates</p>
<p>February 8, 2024 (1pm-4pm) Online</p>	<p>Weatherization Presentation Transportation Electrification Integrated Resource Planning (IRP) Introduction</p>
<p>March 14, 2024 (1pm-4pm) Hybrid: WorkSource Yakima</p>	<p><i>Community Connections:</i></p> <ul style="list-style-type: none"> • South Central Workforce Council Presentation <p>Activity: Revisiting Community Priorities Energy Efficiency Updates</p>
<p>April 11, 2024 (1pm-4pm) Online</p>	<p>Emergency Management & Preparedness Presentation</p> <ul style="list-style-type: none"> • Horace Ward (Sr. Emergency Management Specialist) <p>Distribution System Planning (DSP) Introduction Integrated Resource Planning (IRP) Update</p>
<p>May (April 30 – May 2)</p>	<p>Local, in-person visits with the WA Equity Advisory Group</p> <ul style="list-style-type: none"> • May – Wildfire Awareness Month
<p>June 13, 2024 (1pm-4pm) Online</p>	<p>Integrated Resource Planning (IRP) Update Energy Efficiency Updates</p>
<p>July 11, 2024 (1pm-4pm) Online</p>	<p>Clean Energy Implementation Plan (CEIP) Annual Progress Report Demand Response Program Updates Disconnections Presentation</p>
<p>August</p>	<p>No Meeting</p>
<p>September 12, 2024 (1pm-4pm) Hybrid: Marcus Whitman Hotel & Conference Center 2nd Floor Boardroom</p>	<p><i>Community Connections:</i></p> <ul style="list-style-type: none"> • Blue Mountain Action Council Presentation <p>Energy Efficiency Updates:</p> <ul style="list-style-type: none"> • (Preview 2025 Annual Conservation Plan including potential updates to Utility Actions and preview 2025 program changes) <p>Integrated Resource Planning (IRP) Update</p>
<p>October 10, 2024 (1pm-4pm) Online</p>	<p>Communications Update (Community Case Studies) Multi-Family Electric Vehicle Supply Equipment (EVSE) Program</p>
<p>November</p>	<p>No Meeting</p>
<p>December 12, 2024 (1pm-4pm) Online</p>	<p>End of the Year Reflection; 2025 Planning</p>



Next Steps

Equity Advisory Group Calendar

May One on One Community Visits

April 30 – May 2, 2024

June 13, 2024 (Online) 1pm-4pm

Zoom: <https://esource.zoom.us/j/81505071589?pwd=zA4eZP3zAgDYkbubLCMLMrIY4agA8Y.1>

Meeting materials can be found online on PacifiCorp's [Washington Clean Energy Transformation Act](#) webpage. Spanish materials will also be available following each session.

Pacific Power Resources

For more information:

[Washington Clean Energy Implementation Plan](#)

Washington Feedback Tracker:

[Washington CEIP Feedback Tracker](#)

Energy Resource Center:

[Energy Resource Center \(pacificpower.net\)](#)

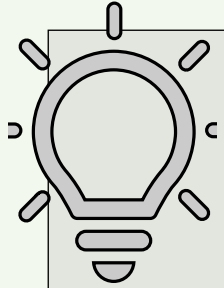
Equity Advisory Group Post-Meeting Survey

Link: <https://forms.office.com/r/vrGVd45Ls3>

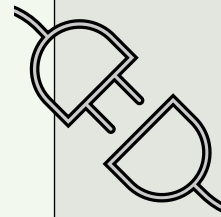


GLOSSARY

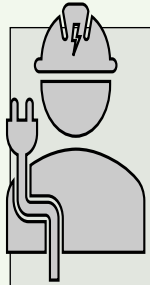




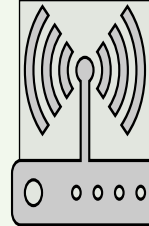
Demand: The amount of electricity consumed by end-users or consumers within a given time period.



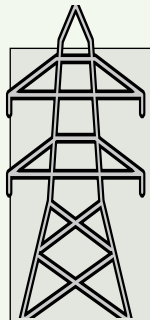
Load: The amount of power that is drawn from the electrical grid to meet the demand of consumers or end-users



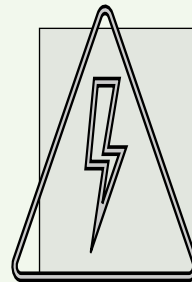
SCADA: Supervisory Control and Data Acquisition - A system used for monitoring and controlling the electrical grid.



AMI: Advanced Metering Infrastructure - A system that enables two-way communication between utilities and meters.



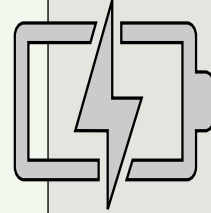
Distribution System: The network of wires and equipment that delivers electricity from transmission lines to end-users.



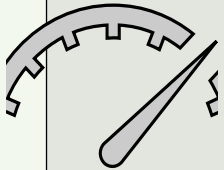
Substation: Facilities where voltage is transformed from high to low (or vice versa) for distribution or transmission.



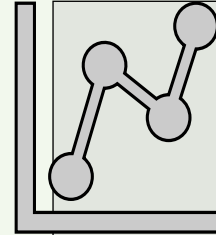
Transformer: Device used to change voltage levels for efficient transmission and distribution of electricity.



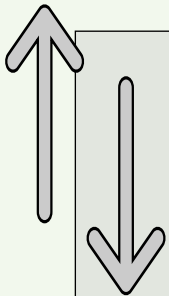
Circuit: A closed loop of conductive material (wire and poles) through which power is delivered to consumers.



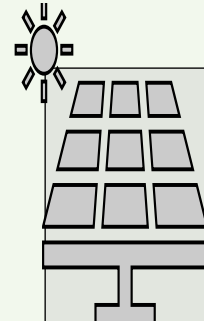
Capacity: The maximum amount of electricity that a generator, substation, or other infrastructure can handle.



Demand Response: Programs or measures implemented to reduce electricity consumption during peak demand periods.



Net Metering: A billing mechanism that credits owners of renewable energy systems for the electricity they add to the grid.



Distributed Generation: Small-scale power generation units installed close to the point of consumption, such as solar panels or wind turbines.

Appendix

Integrated Resource Planning Resources

- 2025 IRP Upcoming Public Input Meetings:
 - May 2, 2024 (Thursday)
- Public Input Meeting and Workshop Presentation and Materials:
 - [Public Input Process \(pacificcorp.com\)](https://www.pacificcorp.com)
- 2025 IRP Feedback Forms:
 - [IRP Stakeholder Feedback \(pacificpower.net\)](https://www.pacificpower.net)
- IRP Email / Distribution List Contact Information:
 - IRP@PacifiCorp.com
- IRP Support and Studies:
 - [IRP Support & Studies \(pacificcorp.com\)](https://www.pacificcorp.com)

Clean Energy Implementation Plan Settlement Conditions

Settlement Condition 16:

PacifiCorp will convene interested stakeholders for up to two workshops to review and improve the Company's approach to identifying and tracking vulnerable populations. These workshops will consider the vulnerability factors listed below (including reasonable alternatives or additions) and determine the extent to which the Company should incorporate each into the 2025 CEIP. Factors include:

- Sensitive populations (disability, cardiovascular disease, low birth weights, higher rates of hospitalization, home care);
- Energy security/insecurity (arrearage/disconnections, estimated energy burden, housing burden);
- Other socioeconomic factors (access to digital/internet resources, access to food, access to health care, educational attainment level, historical redline influence, linguistic isolation, race, transportation expense, unemployment, poverty, deep poverty, renter status, seniors with fixed income, housing quality);
- Geographic areas that PacifiCorp identified as "high needs" or "underserved" in the most recent Biennial Conservation Plan;
- Geographic areas with an average home energy burden of 6% or more for income for households with annual income less than 200% of the federal poverty level;
- Qualified Census Tracts as defined by HUD for purposes of the Low-income Housing Tax Credit program; and
- Geographic areas considered to be a "community in economic distress" as defined by the U.S. Department of Treasury for purposes of the New Markets Tax Credit program.

Due Date: Workshops will be initiated no later than July 1, 2024, and findings from these workshops shall be incorporated and reported on within the Company's 2025 CEIP

Settlement Condition 25:

DSP Condition 1. PacifiCorp will conduct distribution system planning for Washington, *including incorporating relevant learnings from the Company's similar efforts in Oregon*, and evaluate Washington-specific costs and benefits including the equitable distribution of benefits and burdens to:

1. *Vulnerable populations (CBI EAG group definitions)*
2. *Highly Impacted Communities*

During this process, PacifiCorp will *solicit input* regarding options and priorities for various strategies, including resources that are not owned or controlled by PacifiCorp.

The parties do not object to the Company seeking full cost-recovery of these DSP costs and expenses.
Due Date: 2025 CEIP.

CEIP – Clean Energy Implementation Plan