

IDENTIFICATION SITE	DRAWING NUMBER	RECREATION SITE NAME	RECREATION FACILITIES	SITE CONSTRUCTION STATUS
A	R-1	BOAT LAUNCH	MOTORIZED BOAT LAUNCH RAMP WITH FLOATING DOCK; NON-MOTORIZED BOATER TAKE-OUT RAMP WITH FLOATING DOCK; VAULT TOILET WITH TWO STALLS; 2 ADA PARKING STALLS, ONE AT THE VAULT TOILET AND ONE AT THE BOAT LAUNCH; PAVED PARKING FOR APPROXIMATELY 19 VEHICLES; GRAVEL PARKING FOR APPROXIMATELY 26 VEHICLES WITH TRAILERS. THIS RECREATION SITE IS ON BOTH PACIFICORP AND REIRONT COUNTY PROPERTY. THE SITE IS MAINTAINED BY THE COUNTY UNDER AGREEMENT WITH PACIFICORP. PACIFICORP PROVIDES FUNDING SUPPORT FOR MAINTENANCE.	CONSTRUCTED
B	R-2	FISHERMAN'S ACCESS	GRAVEL PATH; BRIDGE; PICNIC TABLE.	CONSTRUCTED

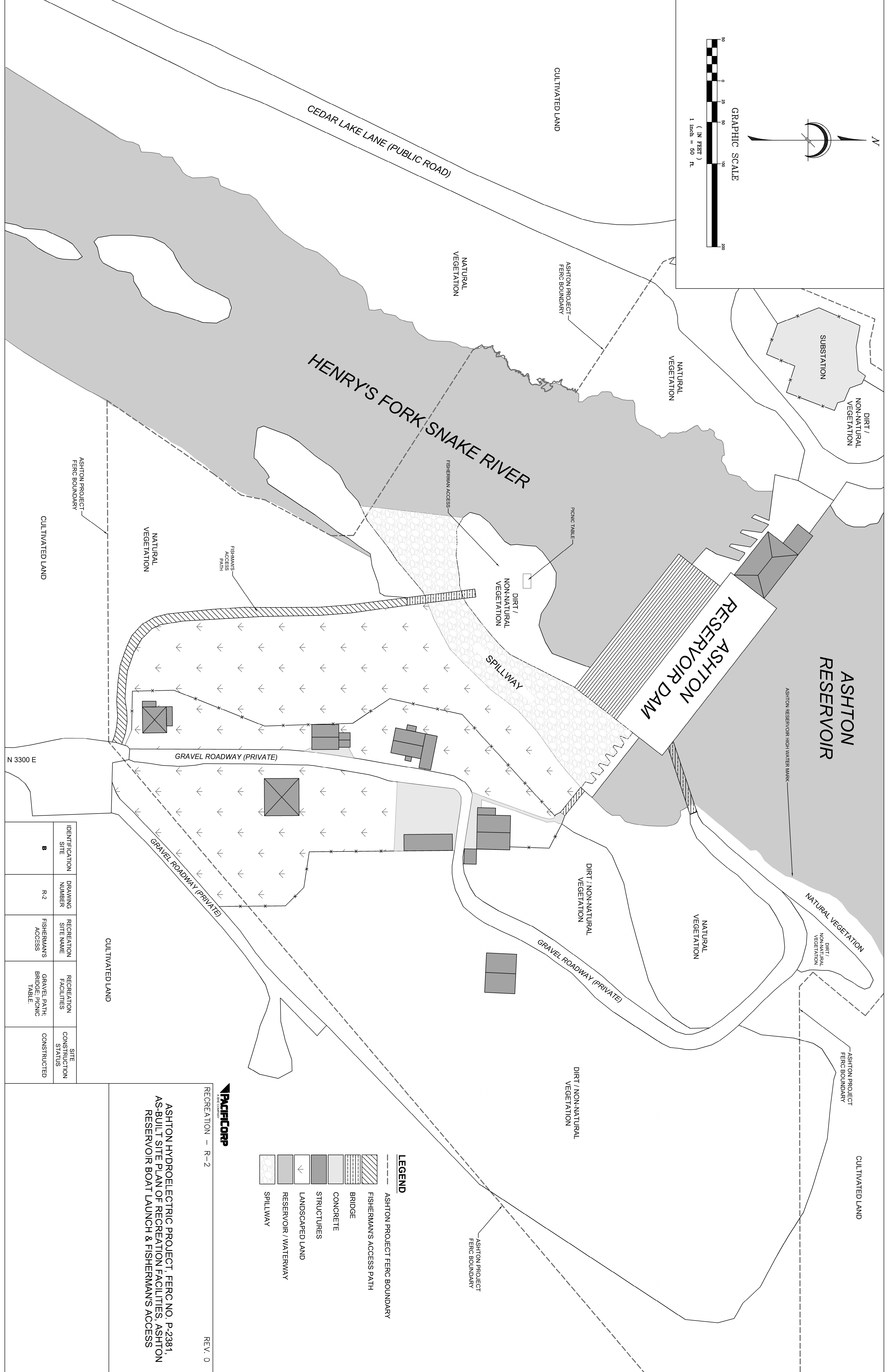
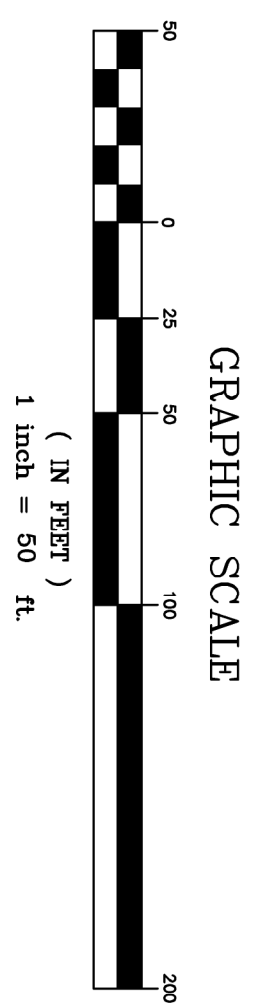
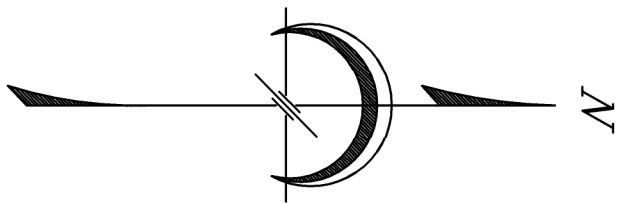
LEGEND

- ASHTON FERC PROJECT BOUNDARY
- ASHTON RESERVOIR HIGH WATER MARK
- P.L.S.S. SECTION LINE
- P.L.S.S. QUARTER SECTION LINE
- ▨ ASHTON RESERVOIR BOUNDARY

PacificCorp
A subsidiary of
RECREATION - COVER

ASHTON HYDROELECTRIC PROJECT, FERC NO. P-2381,
AS-BUILT SITE PLAN OF RECREATION FACILITIES, ASHTON
RESERVOIR BOAT LAUNCH & FISHERMAN'S ACCESS

REV. 0



IDENTIFICATION SITE	DRAWING NUMBER	RECREATION SITE NAME	RECREATION FACILITIES	SITE CONSTRUCTION STATUS
B	R-2	FISHERMAN'S ACCESS	GRAVEL PATH, BRIDGE, PICNIC TABLE	CONSTRUCTED

- LEGEND**
- ASHTON PROJECT FERC BOUNDARY
 - - - FISHERMAN'S ACCESS PATH
 - ▨ BRIDGE
 - ▩ CONCRETE
 - ▧ STRUCTURES
 - ▤ LANDSCAPED LAND
 - ▥ RESERVOIR / WATERWAY
 - ▦ SPILLWAY

ASHTON HYDROELECTRIC PROJECT, FERC NO. P-2381,
AS-BUILT SITE PLAN OF RECREATION FACILITIES, ASHTON
RESERVOIR BOAT LAUNCH & FISHERMAN'S ACCESS

PACIFICORP
AEC COMPANY

RECREATION - R-2

REV. 0