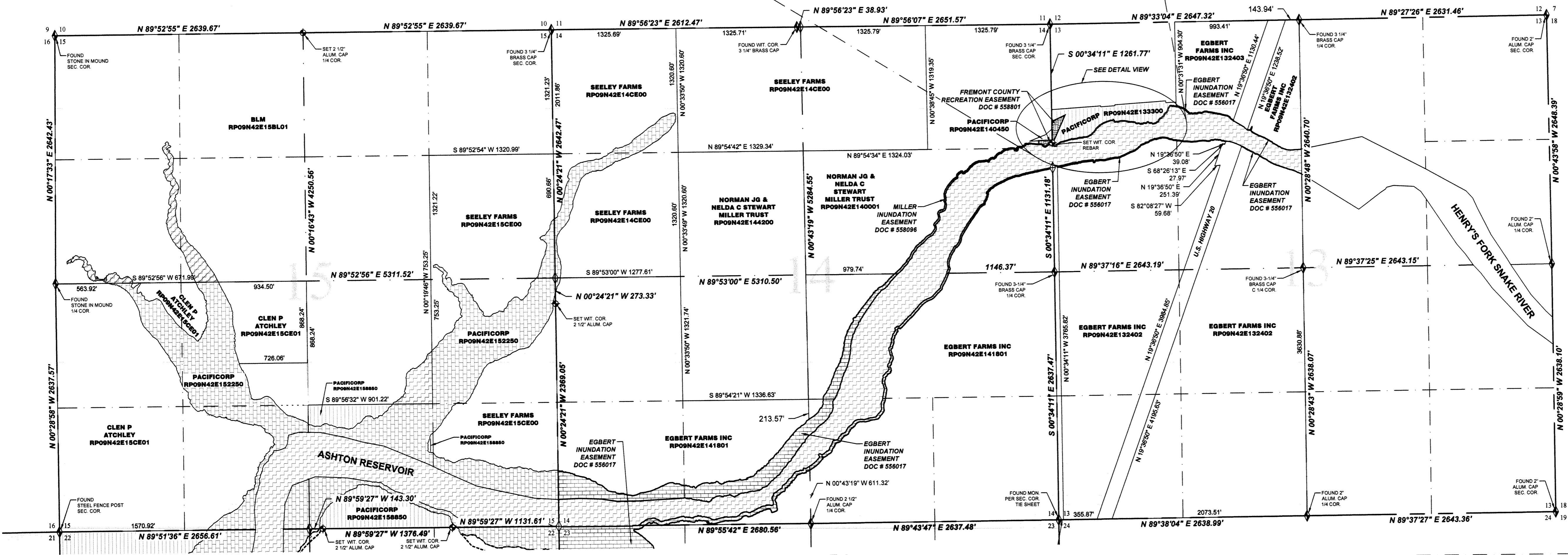
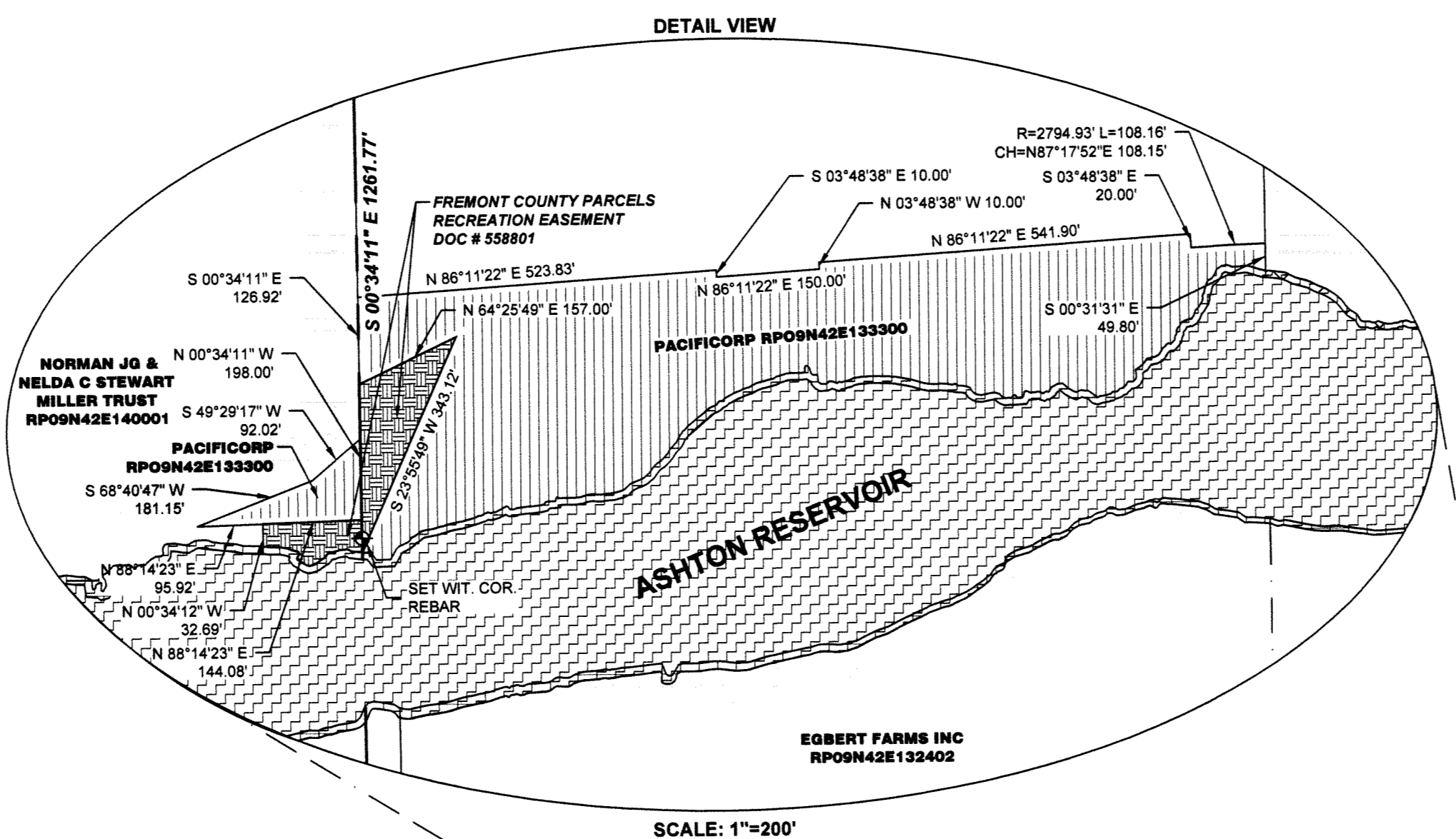
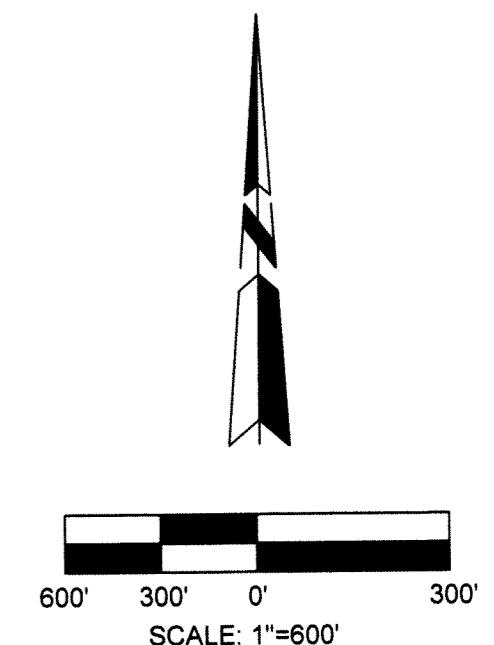


ASHTON RESERVOIR RECORD OF SURVEY

LOCATED IN SECTIONS 13, 14, 15, 21, 22, 28, & 27
TOWNSHIP 9 NORTH, RANGE 42 EAST
BOISE MERIDIAN & BASELINE
FREMONT COUNTY, IDAHO



- LEGEND**
- FOUND MONUMENT
 - CALCULATED CORNER
 - SET MONUMENT
 - SURVEYED PACIFICORP PROPERTY
 - SURVEYED ADJOINING PARCEL
 - ORIGINAL RIVER CHANNEL (OWNED BY IDAHO STATE)
 - INUNDATED LANDS PACIFICORP OWNERSHIP
 - INUNDATED LANDS PRIVATE OWNERSHIP (EASEMENT TO PACIFICORP)
 - FPC WITHDRAWAL 2381 (BLM OWNERSHIP)
 - INUNDATION EASEMENT TO PACIFICORP
 - WILDLIFE HABITAT EASEMENT TO PACIFICORP
 - RECREATION EASEMENT TO PACIFICORP
 - ROAD EASEMENT TO PACIFICORP
 - STATE EASEMENT TO PACIFICORP
 - PRESERVATION/CONSERVATION EASEMENT TO PACIFICORP
 - BEARING AND DISTANCE ON SURVEYED PARCEL LINE
 - BEARING AND DISTANCE FROM NEAREST MONUMENT OR CALCULATED CORNER TO NEAREST MONUMENT OR CALCULATED CORNER
 - SECTION LINE
 - 1/4 SECTION LINE
 - 1/16 SECTION LINE
 - PRESERVATION/CONSERVATION EASEMENT LINE

PREPARED BY:
Engineering with Distinction
ECI ELECTRICAL CONSULTANTS, INC.

BLDG. OFF. SALINEVILLE, OHIO
220 S. 10TH ST. SALINEVILLE, OHIO 44681
(419) 234-9333 FAX (419) 234-9334 (419) 234-9335 (419) 234-9336

ENGINEERING RECORD		
DRAWN	KCH	4/01/16
DESIGNED	JRT	4/01/16
CHECKED	SRB	4/01/16
APPROVED	JJC	7/08/16
FILE NO.	RMP-166	ASHTON RESERVOIR
REVISION:		
SHEET:	2 OF 3	

PROPERTY SURVEY PREPARED FOR:
PACIFIC POWER
A DIVISION OF PACIFICORP

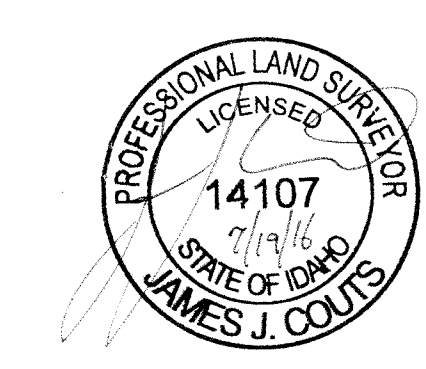
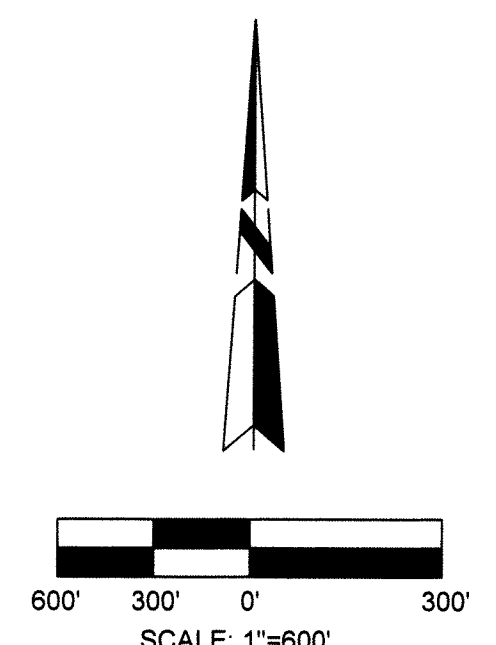
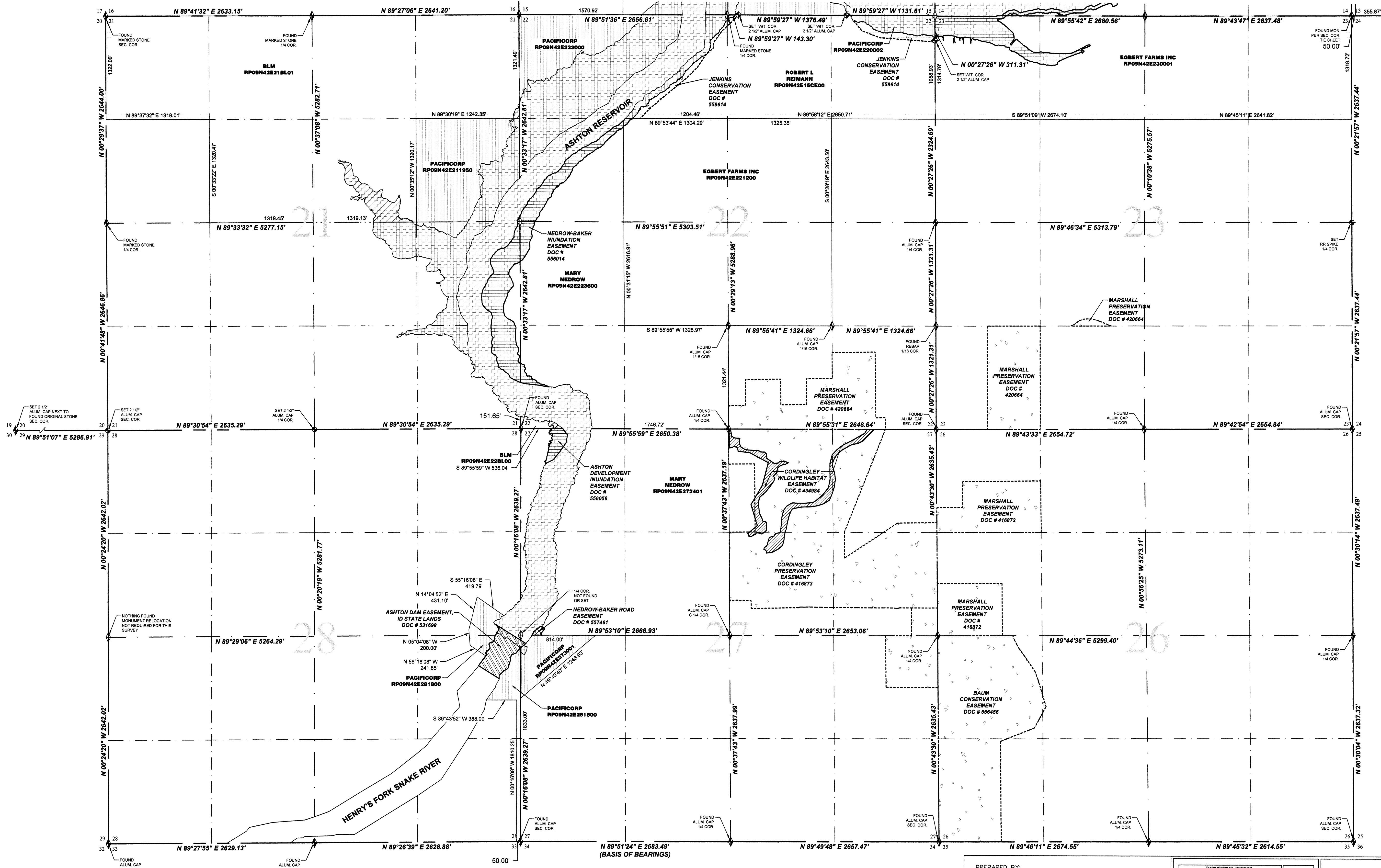
LOCATED IN SECTIONS 13, 14, 15, 21, 22, 28, & 27,
TOWNSHIP 9 NORTH, RANGE 42 EAST,
BOISE MERIDIAN & BASELINE,
FREMONT COUNTY, IDAHO

DATE OF SURVEY: JULY 2015 - JULY 2016 SCALE: 1"=1000'

ASHTON RESERVOIR RECORD OF SURVEY

LOCATED IN SECTIONS 13, 14, 15, 21, 22, 28, & 27
TOWNSHIP 9 NORTH, RANGE 42 EAST
BOISE MERIDIAN & BASELINE
FREMONT COUNTY, IDAHO

SEE SHEET 2



LEGEND

- FOUND MONUMENT
- CALCULATED CORNER
- SET MONUMENT
- SURVEYED PACIFICCORP PROPERTY
- SURVEYED ADJOINING PARCEL
- ORIGINAL RIVER CHANNEL (OWNED BY IDAHO STATE)
- INUNDATED LANDS PACIFICCORP OWNERSHIP
- INUNDATED LANDS PRIVATE OWNERSHIP (EASEMENT TO PACIFICCORP)
- FPC WITHDRAWAL 2381 (BLM OWNERSHIP)
- INUNDATION EASEMENT TO PACIFICCORP
- WILDLIFE HABITAT EASEMENT TO PACIFICCORP
- RECREATION EASEMENT TO PACIFICCORP
- ROAD EASEMENT TO PACIFICCORP
- STATE EASEMENT TO PACIFICCORP
- PRESERVATION/CONSERVATION EASEMENT TO PACIFICCORP
- BEARING AND DISTANCE ON SURVEYED PARCEL LINE
- BEARING AND DISTANCE FROM NEAREST MONUMENT OR CALCULATED CORNER TO NEAREST MONUMENT OR CALCULATED CORNER
- SECTION LINE
- 1/4 SECTION LINE
- 1/16 SECTION LINE
- PRESERVATION/CONSERVATION EASEMENT LINE

DISTANCES AND BEARINGS ARE NAD 83 IDAHO STATE PLANE EAST ZONE, U.S.F. GRID.

PREPARED BY:
TECI ELECTRICAL CONSULTANTS, INC.
ENGINEERING RECORD
DRAWN: KCH 4/01/16
DESIGNED: JRT 4/01/16
CHECKED: SRB 4/01/16
APPROVED: JJC 7/08/16
FILE NO: RMP-166 ASHTON RESERVOIR
REVISION:
SHEET: 3 OF 3

PROPERTY SURVEY PREPARED FOR:
PACIFIC POWER
A DIVISION OF PACIFICORP
LOCATED IN SECTIONS 13, 14, 15, 21, 22, 28, & 27,
TOWNSHIP 9 NORTH, RANGE 42 EAST,
BOISE MERIDIAN & BASELINE,
FREMONT COUNTY, IDAHO
DATE OF SURVEY: JULY 2015-JULY 2016 SCALE: 1"=1000'