

**ENVIRONMENTAL INSPECTION REPORT  
(ELECTRONICALLY SUBMITTED)  
FEDERAL ENERGY REGULATORY COMMISSION**

**Region:** Portland **Inspection Date(s):** August 22, 2018

**Project:** Ashton Project **Project No.** 2381

**Licensee:** Pacificorp **Type:** Major

**Project Features:** Ashton Powerhouse; Ashton Dam and 404-acre Reservoir;  
Lower recreation fishing site; Upper recreation site with boat launch  
\_\_\_\_\_  
\_\_\_\_\_  
\_\_\_\_\_  
\_\_\_\_\_  
\_\_\_\_\_  
\_\_\_\_\_  
\_\_\_\_\_  
\_\_\_\_\_  
\_\_\_\_\_  
\_\_\_\_\_

**License Issued:** August 3, 1987 **License Expires:** December 31, 2027

**Location:** Henry’s Fork Snake River, Fremont County, Idaho  
\_\_\_\_\_

**Inspector(s):** David Rudisail

**Licensee Representatives:** Mark Stenburg; Curtis Pitcher; Jeff Walkenhorst  
\_\_\_\_\_  
\_\_\_\_\_  
\_\_\_\_\_

**Other Participants:** \_\_\_\_\_

**Submitted:** September 26, 2018

## **Summary of Findings**

The inspection identified needed biological, recreational, and public safety improvements (see Section B Follow-Up Actions).

### **A. Comments**

Pacificorp uses a Supervisory Control and Data Acquisition System (SCADA) and staff gages to monitor reservoir elevation and release flows (Photos 1-2). Run-of-river flows were in compliance the day of the inspection.

The Ashton Project has one powerhouse. The interior and exterior of the powerhouse had appropriate containment systems for hazardous materials the day of the inspection (Photos 3-5).

The Ashton Project has one recreation fishing site below the dam and one multi-use recreation site on Henry's Fork near Highway 20. Both recreation sites were well maintained the day of the inspection (Photos 6-9).

The Ashton Project has multiple wildlife enhancement and wetland protection measures required by the approved Wildlife Enhancement Plan (Photos 10-12).

Pacificorp is required by the license to stock 37,400 trout annually. Pacificorp provided an invoice on the day of the inspection for 38,751 trout purchased 8-15-18.

### **B. Follow-Up Actions**

The post-inspection letter issued September 20, 2018, requires one biological resource improvement; one recreation improvement; and one public safety improvement.

## **BIOLOGICAL RESOURCES**

The Wildlife Enhancement Plan (WEP) for the project was updated in 2016 and approved by the Commission in 2017. The updated WEP requires the licensee to install waterfowl nesting boxes in consultation with Idaho Department of Fish and Game (Idaho DFG) and the U.S. Fish and Wildlife Service (FWS). Approximately five nesting boxes were observed on the day of the inspection (Photo 13). The nesting boxes were observed without predator guards and some nesting boxes were side by side. Research has indicated that predator guards and widely spaced nesting boxes increase the rate of successful nesting attempts. The post-inspection letter requested Pacificorp consult with the Idaho DFG and FWS on installing predator guards and insuring boxes are adequately spaced and submit a plan and schedule for implementation.

RECREATION

18 CFR § 8.2 (a) requires the licensee to post a “conspicuous” sign detailing recreation and project information at all points of public access and other points designated by the Commission. There were 3 part 8 signs observed during the inspection. The part 8 signs were 8”x11” laminated pages posted to bulletin boards at public access points (Photos 14-15). The part 8 signs should be larger with a larger font size so they are more easily spotted and read by public recreationists. The post-inspection letter requested Pacificorp increase the page size and font of the part 8 signs and submit a photo verification once reposted.

PUBLIC SAFETY

Sign No. S22 warning “No Parking on Roadway” in the recreation site public safety plan was very faded and needs replacing (Photo 16). The post-inspection letter requested Pacificorp replace the faded sign and submit a photo verification.

C. Photographs and Exhibits

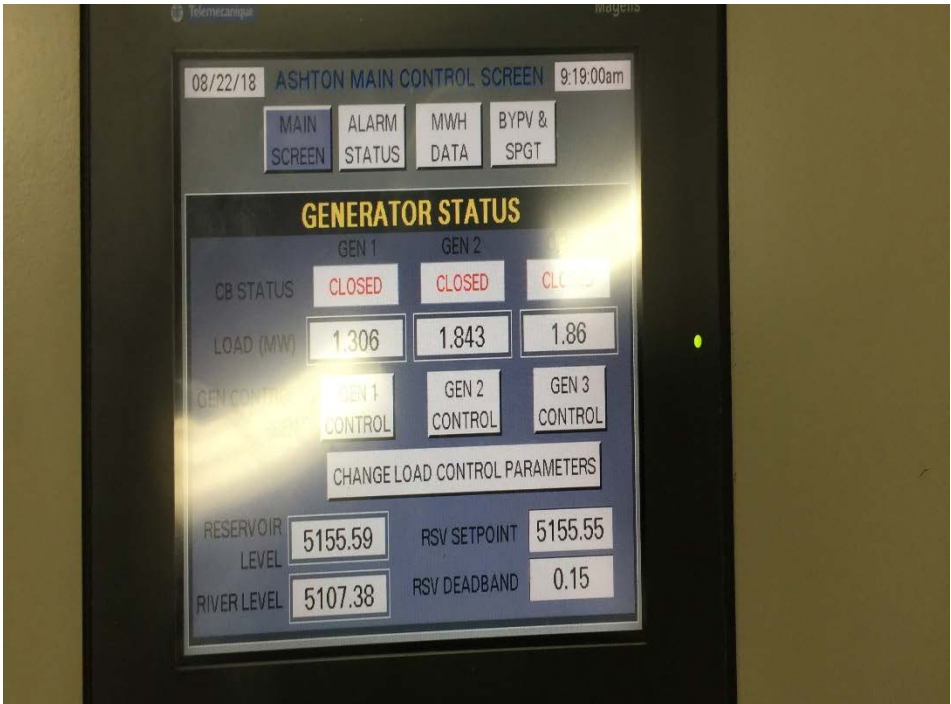


Photo 1. SCADA generator status and reservoir level reading 8-22-18.



Photo 2. Staff gage at Ashton Reservoir Dam 8-22-18.



Photo 3. Battery bank with secondary containment in Ashton Powerhouse.





Photo 4. Hazardous materials with secondary containment system in Ashton Powerhouse.

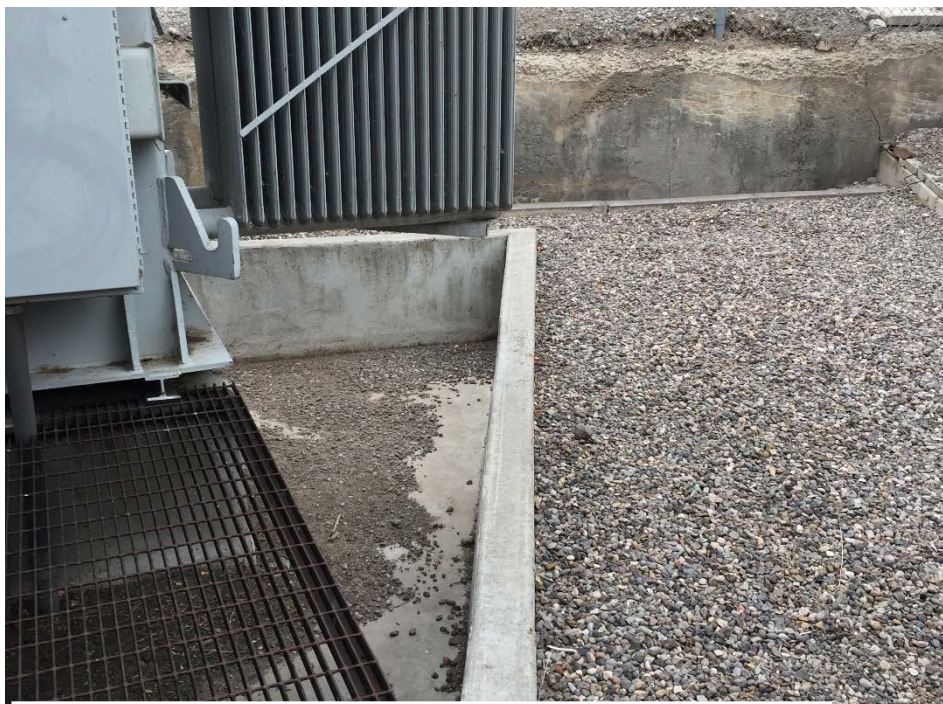


Photo 5. Outdoor transformer with secondary containment barrier at Ashton switchyard.



Photo 6. Fishing recreation site below Ashton Dam.



Photo 7. Picnic area at recreation site on Henry's Fork.





Photo 8. Sanitation facilities at recreation site on Henry's Fork.



Photo 9. Parking, fishing dock, and boat ramp at recreation site on Henry's Fork.



Photo 10. Wetland complex with cattle exclusion fencing at the Ashton Project.



Photo 11. Perching post and nest platform on Ashton Reservoir.





Photo 12. Cattle exclusion fencing on Ashton Reservoir.



Photo 13. Waterfowl nesting box on Ashton Reservoir.

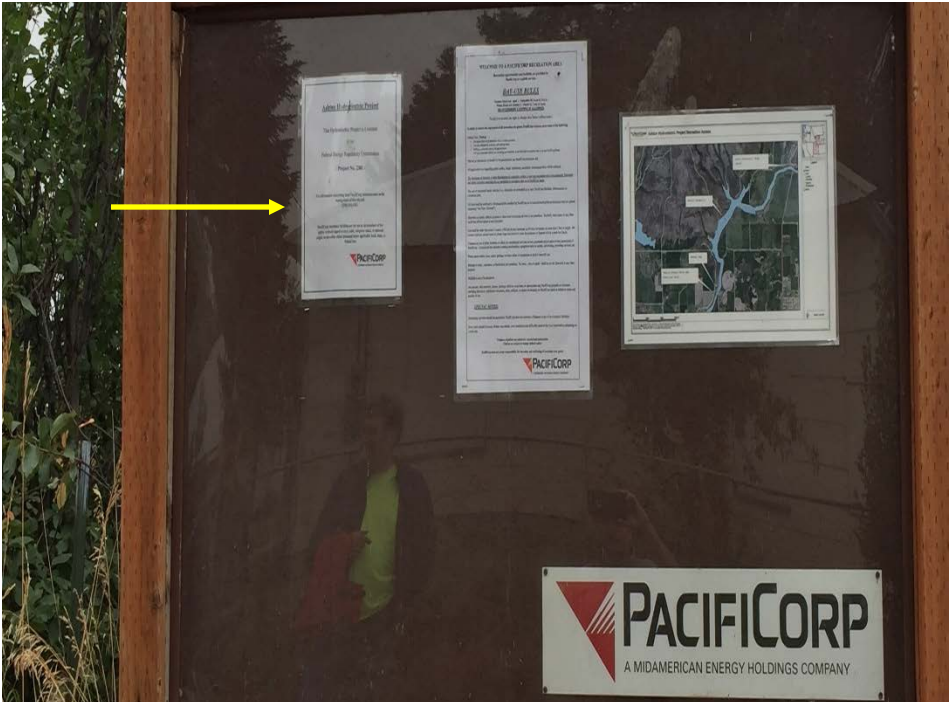


Photo 14. Part 8 sign at dam fishing access trailhead.



Photo 15. Part 8 sign at Henry's Fork recreation site access.



Photo 16. Faded "No Parking" sign at Henry's Fork recreation site.



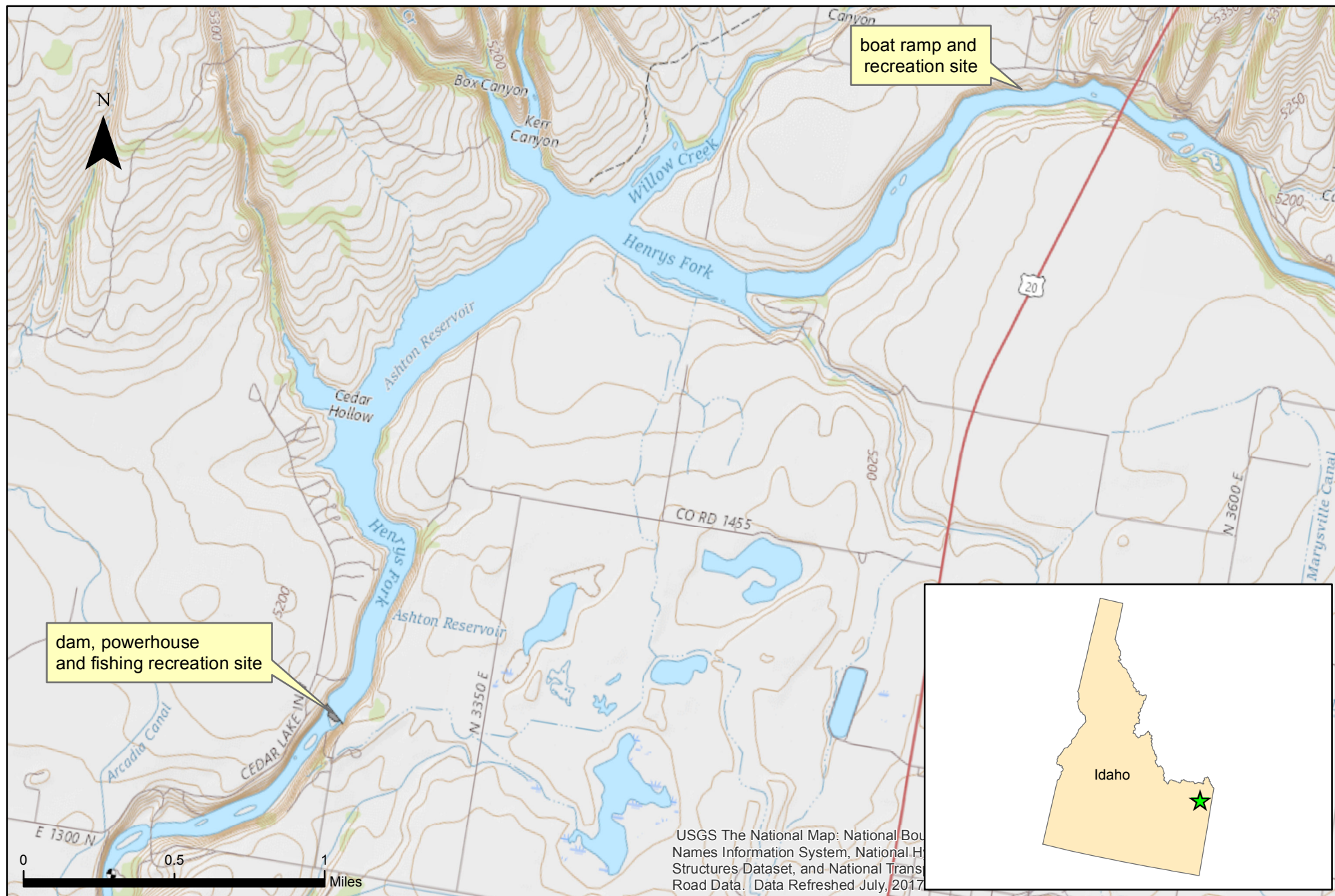


Exhibit 1. Location and features of the Ashton Project No. 2381

Federal Energy Regulatory Commission  
Division of Hydropower Administration  
and Compliance



Document Content(s)

P-2381-063.PDF.....1-12