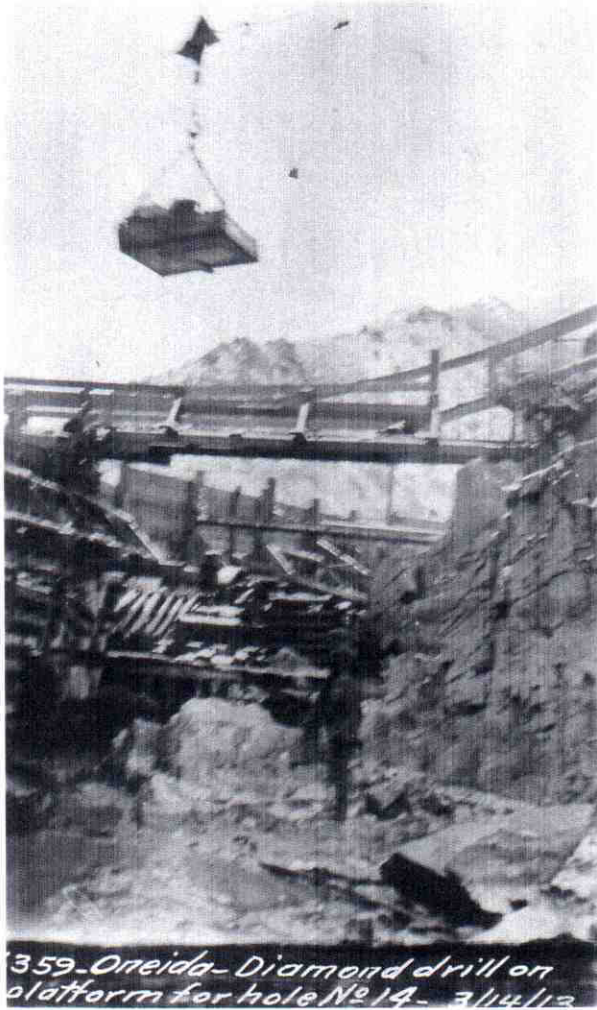


1913 - ONEIDA photos



359-Orneida-Diamond drill on  
plattform for hole No 14- 3/14/12



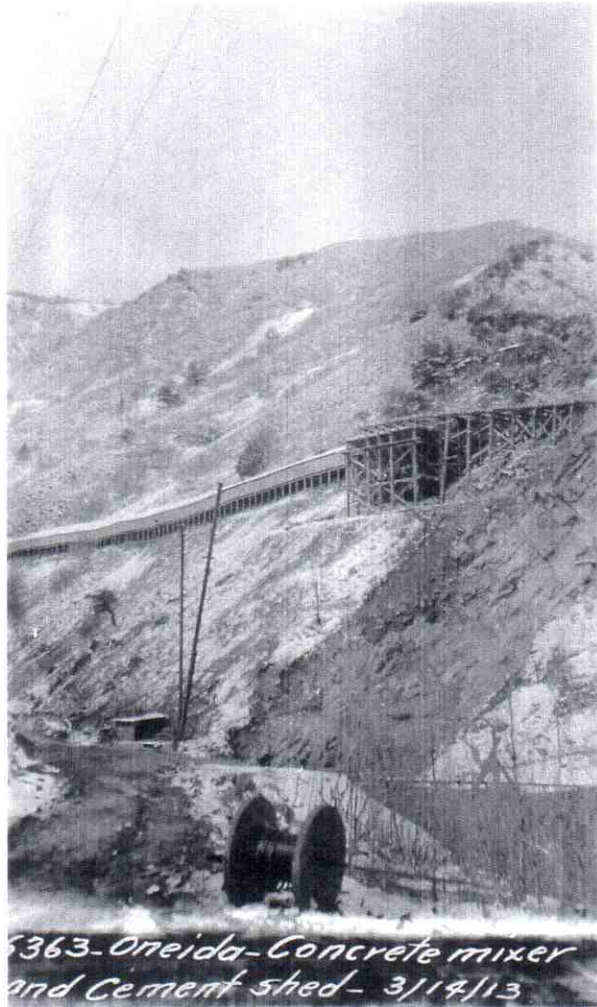
362. Oneida-Flume and hoist  
looking up stream - 3/14/13.



5361. Oneida - River bed - East side  
looking up stream - 3/14/13.



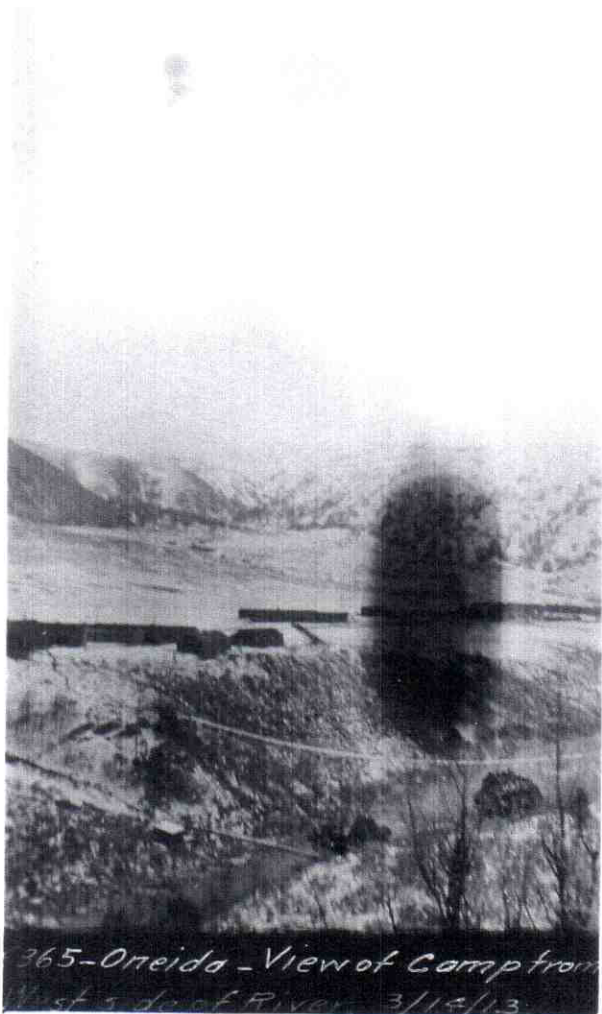
5364-Oneida-High voltage  
Transformer House - 3/14/12



5363-Oneida-Concrete mixer  
and Cement shed - 3/14/13

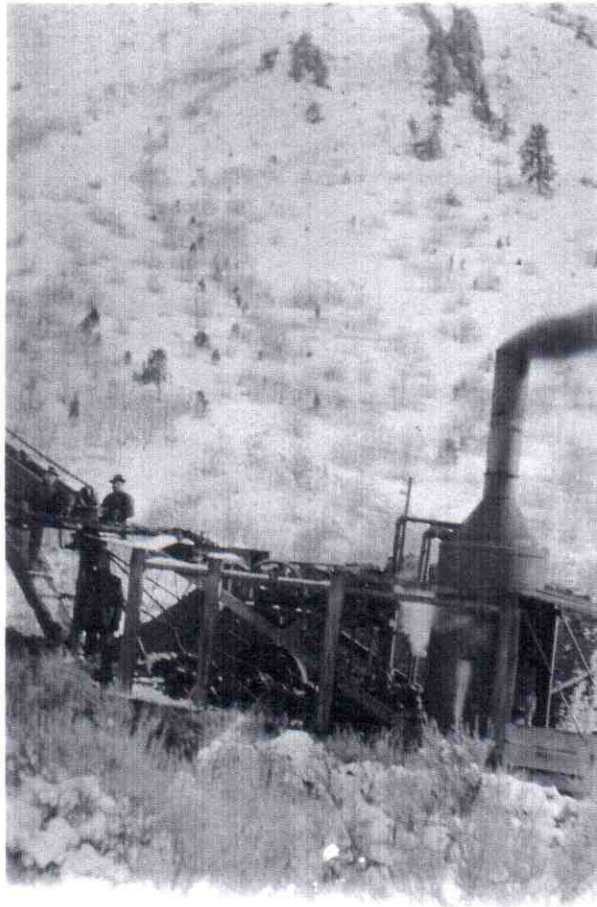


3/14-13  
366-Oneida-Cement-shed and Concrete mixer from W. Side of Wagon road



365-Oneida - View of Camp from  
West side of River 3/13/13





6368 - Oneida - Steam shovel at  
Sand pit - 3/14/13.

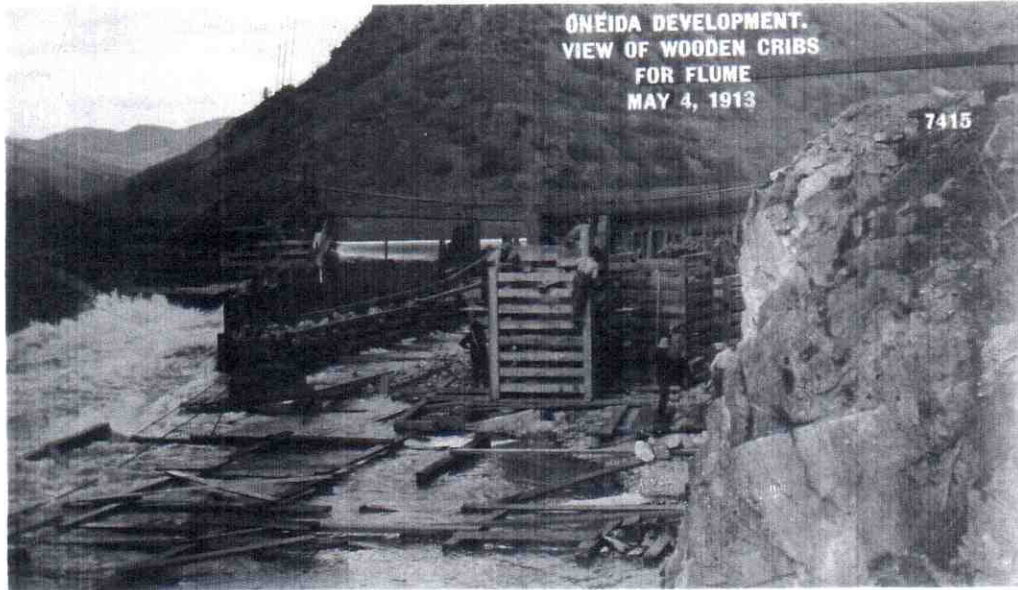


6367-Oneida-Flume from West  
side of Wagon Road- 3/14/13.



ONEIDA DEVELOPMENT.  
VIEW OF TRUSS BULKHEAD  
ON WESTSIDE OF NEW FLUME  
MAY 4, 1913

7414



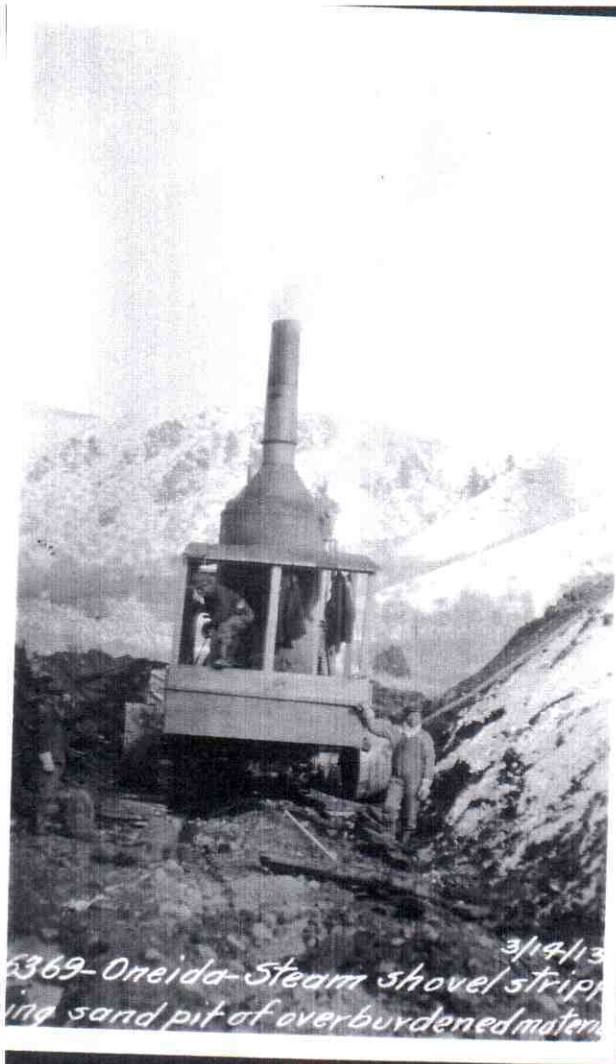
ONEIDA DEVELOPMENT.  
VIEW OF WOODEN CRIBS  
FOR FLUME  
MAY 4, 1913

7415

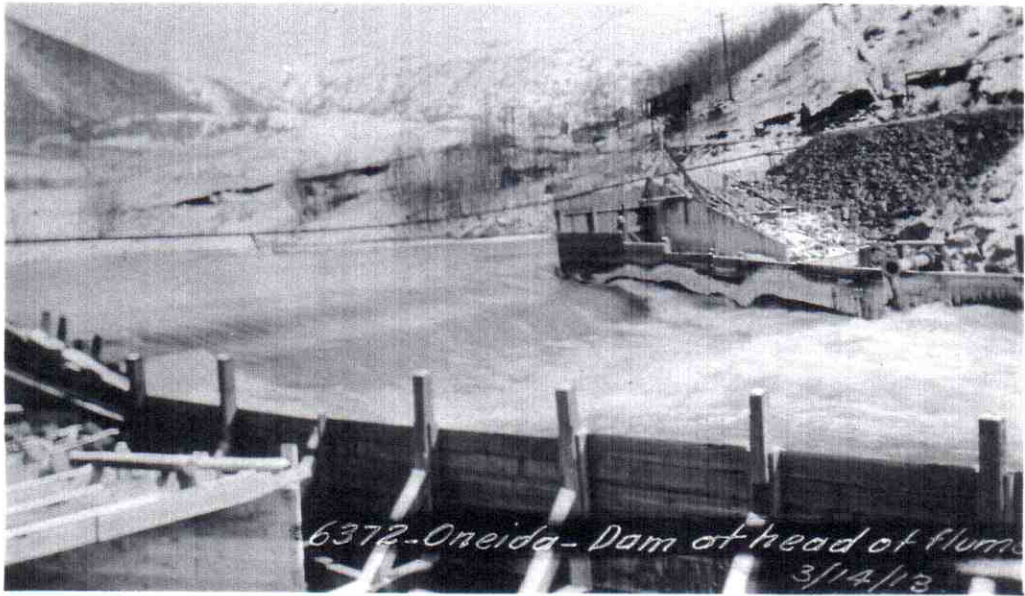


ONEIDA DEVELOPMENT.  
FLUME CRIBS FROM  
TEMPORARY DAM  
MAY 11, 1913

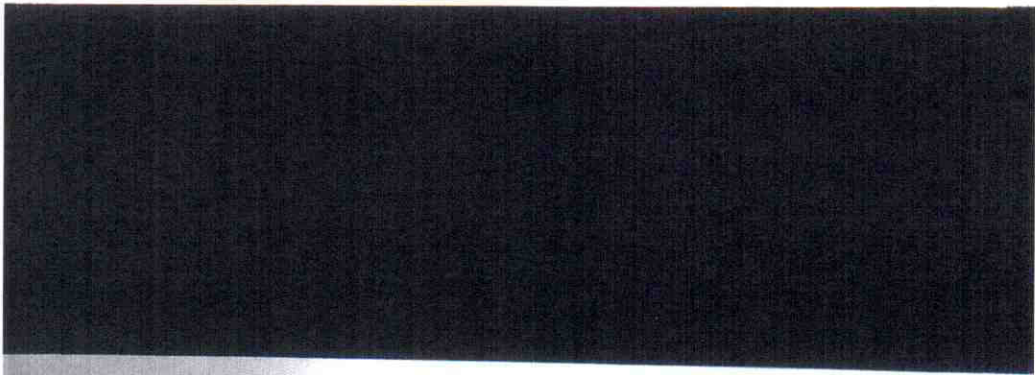
7416



3/9/13  
6369- Oneida Steam shovel stripping  
ing sand pit of overburdened material



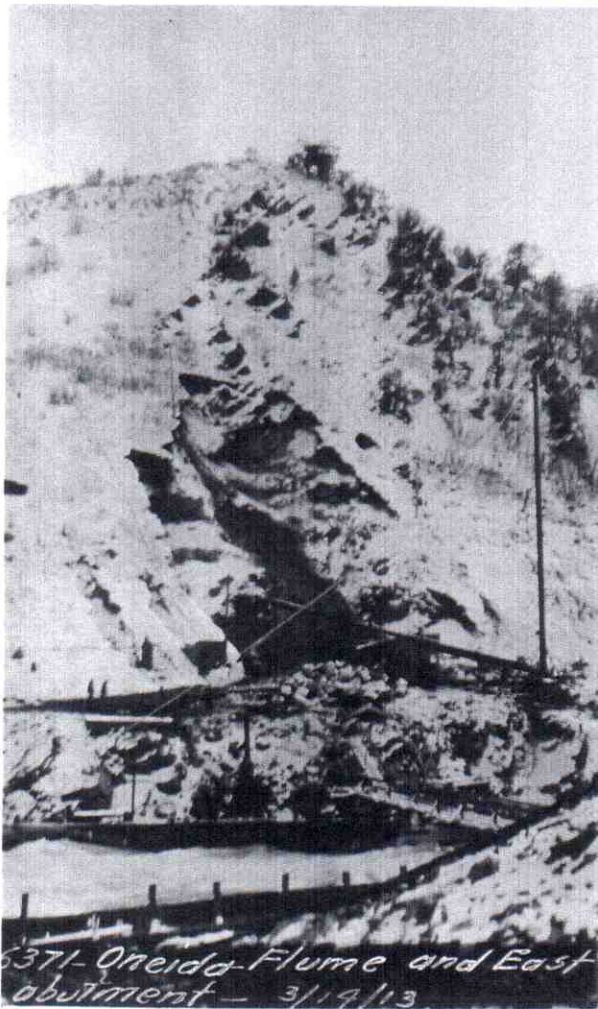
6372-Oneida-Dam at head of flume  
3/14/13



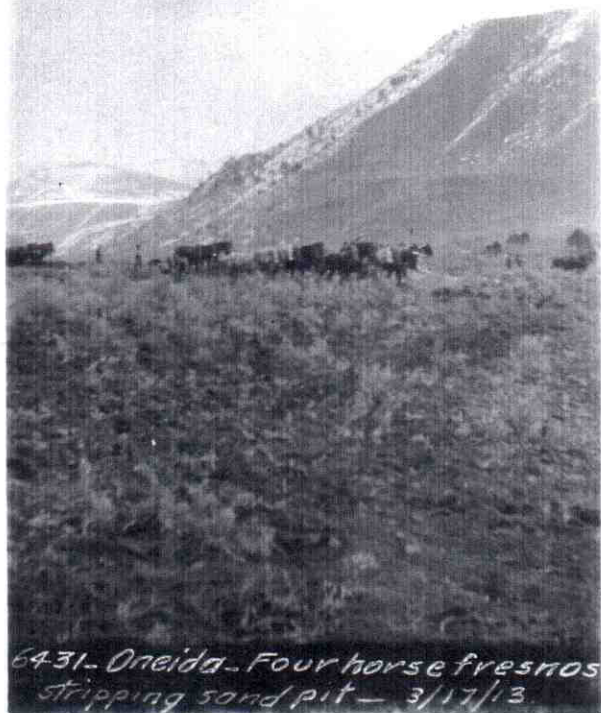
6373-Oneida-West side of flume Looking upstream  
towards Dam 3/14/13



370-Oneida-Flume & E. abutment  
from west side near old headgate



371-Oneida-Flume and East  
abutment - 3/19/13



6431. Oneida - Four horse fresnos  
stripping sand pit - 3/17/13



6432. Oneida - Plough team at  
sand pit - 3/17/13





6429 - Oneida - Steam Shovel  
stripping sand Pit - 3/17/13

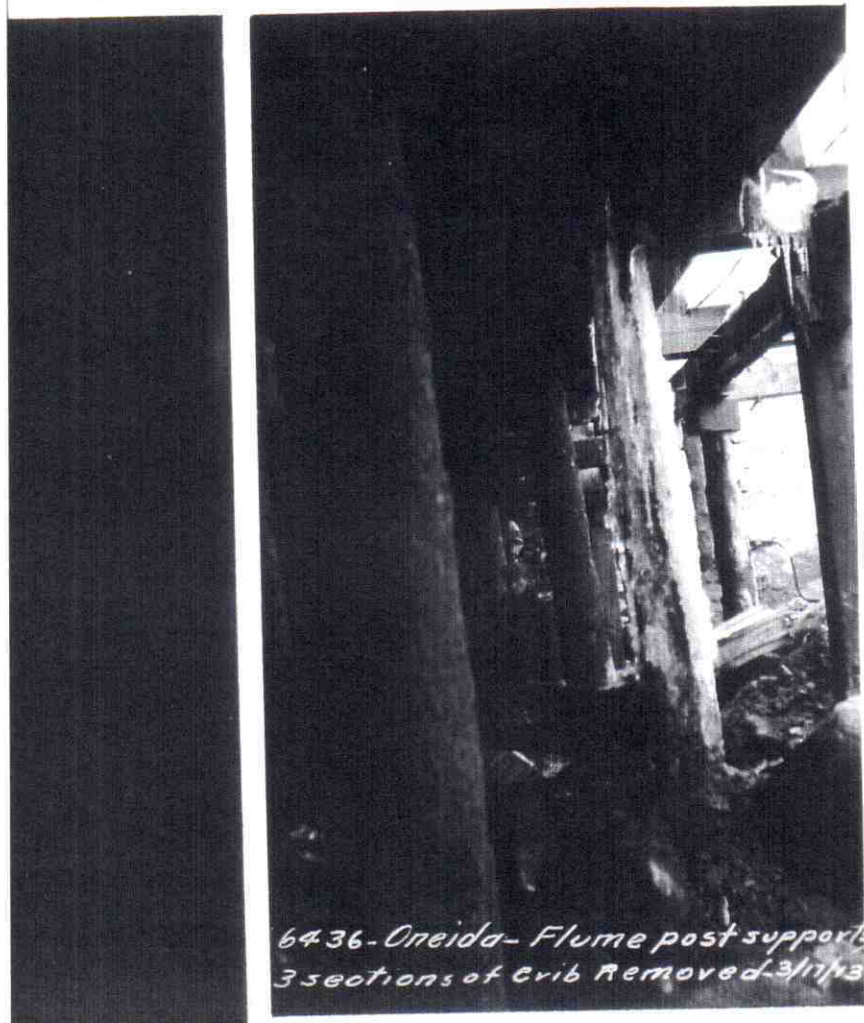


6430 - Oneida - Steam shovel  
showing overburden material  
removed - 3/17/13

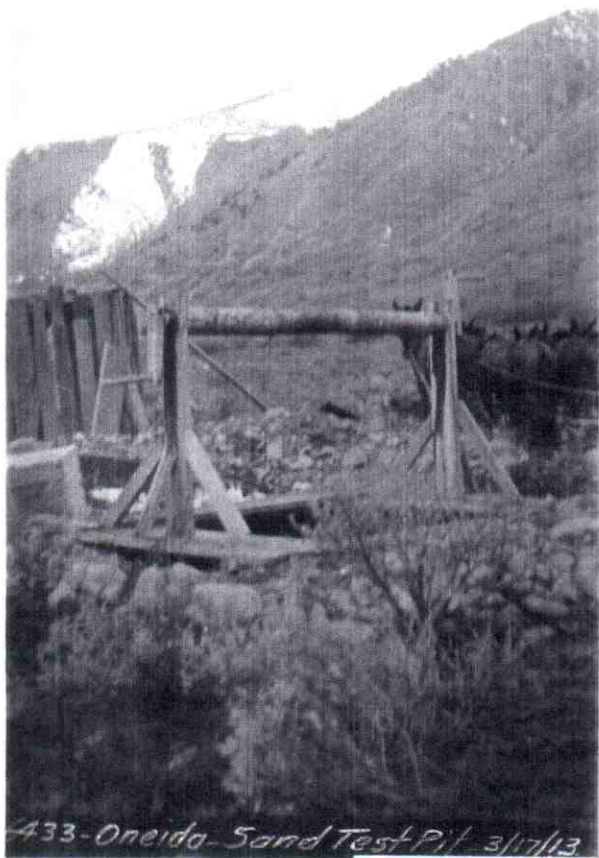




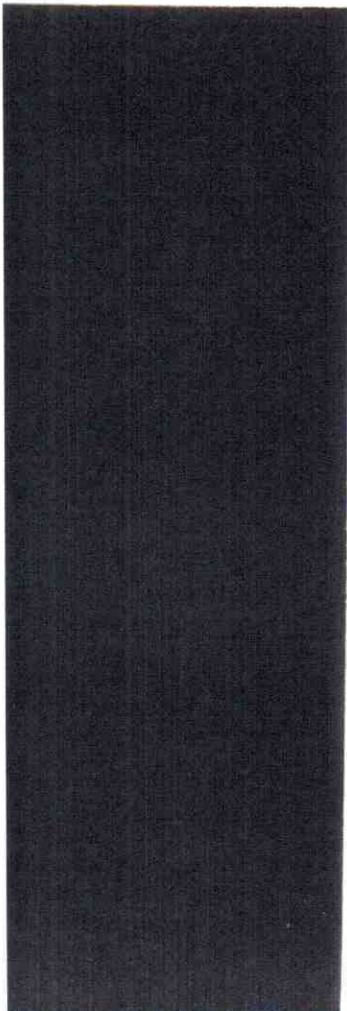
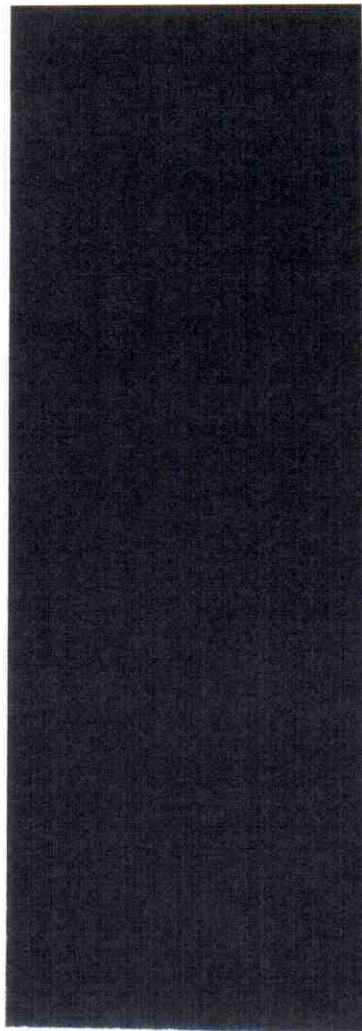
6435-Oneida- Under flume, West side - view down stream - 3/17/13



6436-Oneida- Flume post support  
3 sections of crib removed - 3/17/13



433- Oneida- Sand Test Pit- 3/17/13



6434- Oneida- Stable Tent for  
Sand Pit Teams- 3/17/13.



6439. Oneida  
stairway from  
flume to con-  
crete mixer.  
3/17/13.



ONEIDA DEVELOPMENT.  
FLUME.  
LOOKING UPSTREAM  
MAY 11, 1913

7417



6437-Oneida - Air drill on boulders  
under flume - 3/17/13.



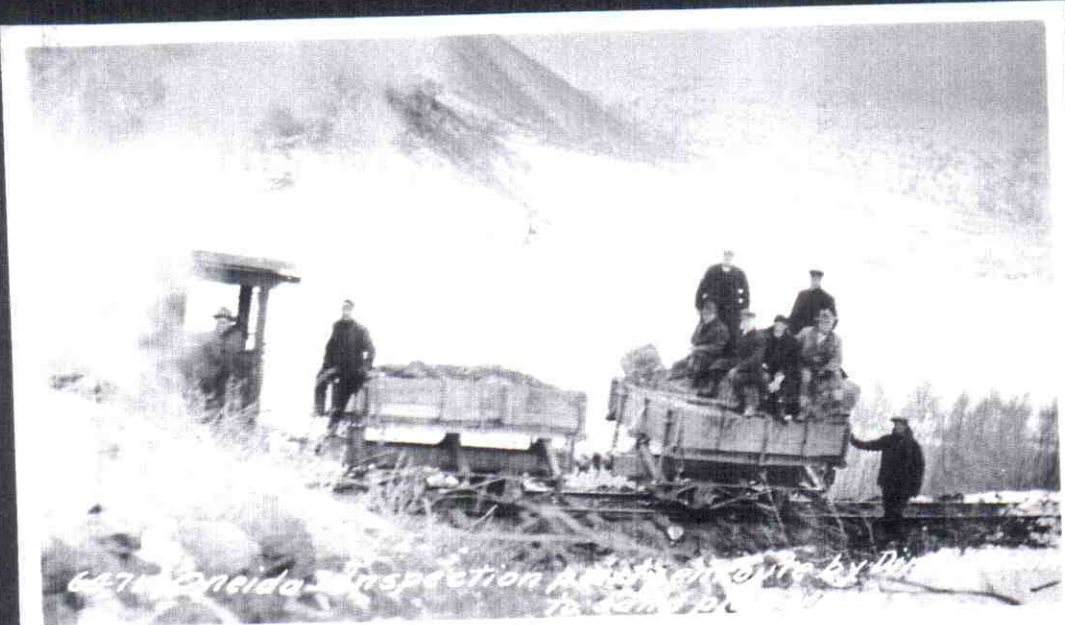
6438-Oneida - Cofferdam  
excavation from East side  
showing sack Dam 3/17/13.



6469 - Oneida - Inspection Party  
inside coffer dam - 3/20/13.



6470 - Oneida - Inspection Party at site by D.H.  
to camp 02/21



6471 - Oneida - Inspection Party at site by D.H.  
to camp 02/21



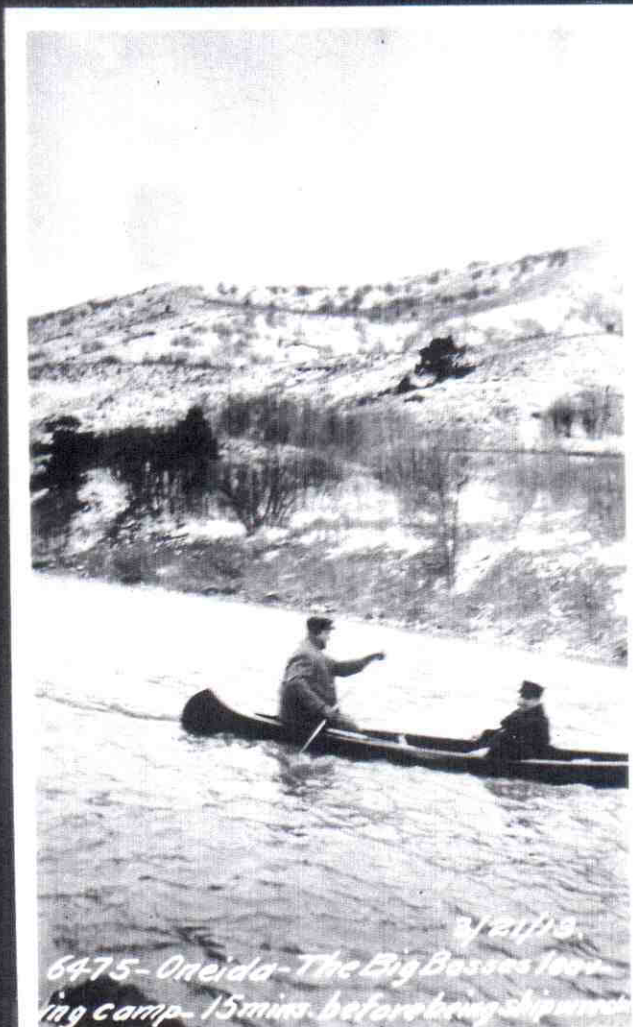
6467-Oneida-Inspection party  
Watching steam shovel stripping  
sand pit- 3/20/13.



6468-Oneida-View under flume-Posts replacing  
original cribs- 3/20/13.



6474 - Oneida - View of unwatered bottom -  
note - coffer dam of bags in back ground - 3/21/13.



3/21/13  
6475 - Oneida - The Big Bosses leaving  
camp - 15 mins. before being shipped

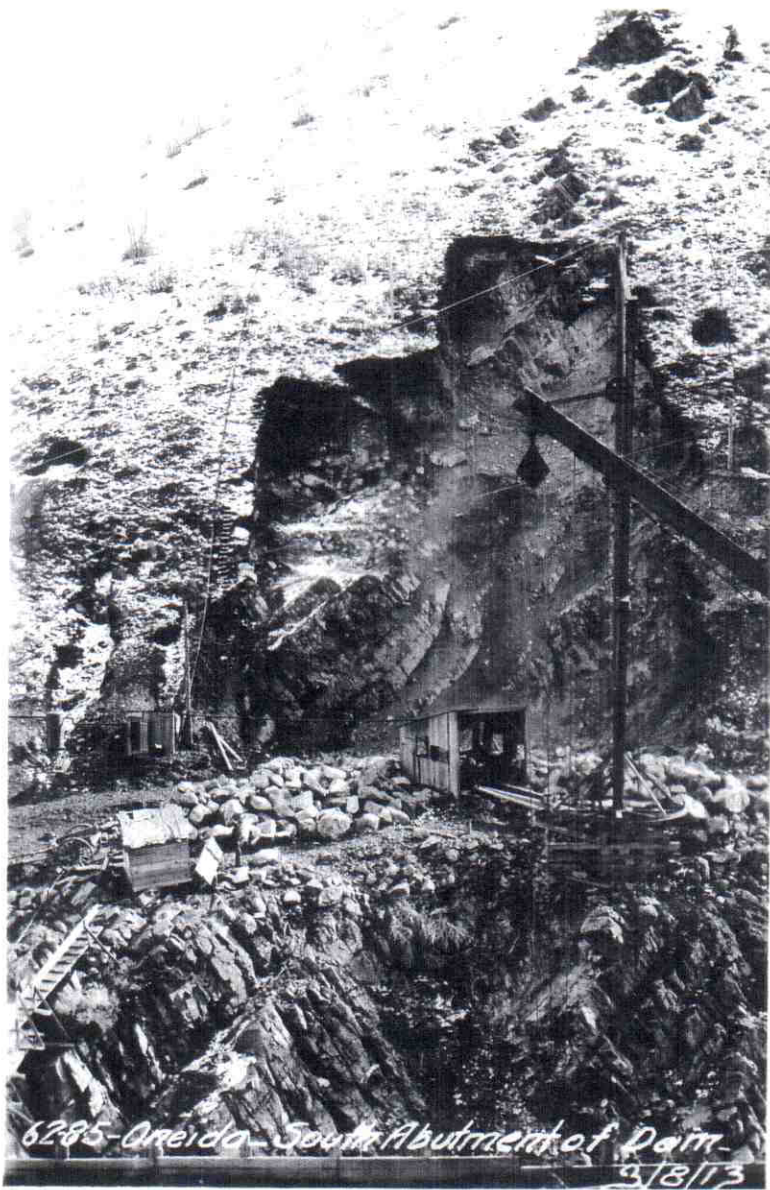


6472. Oneida. A few minutes previous to the disaster - 3/20/13.

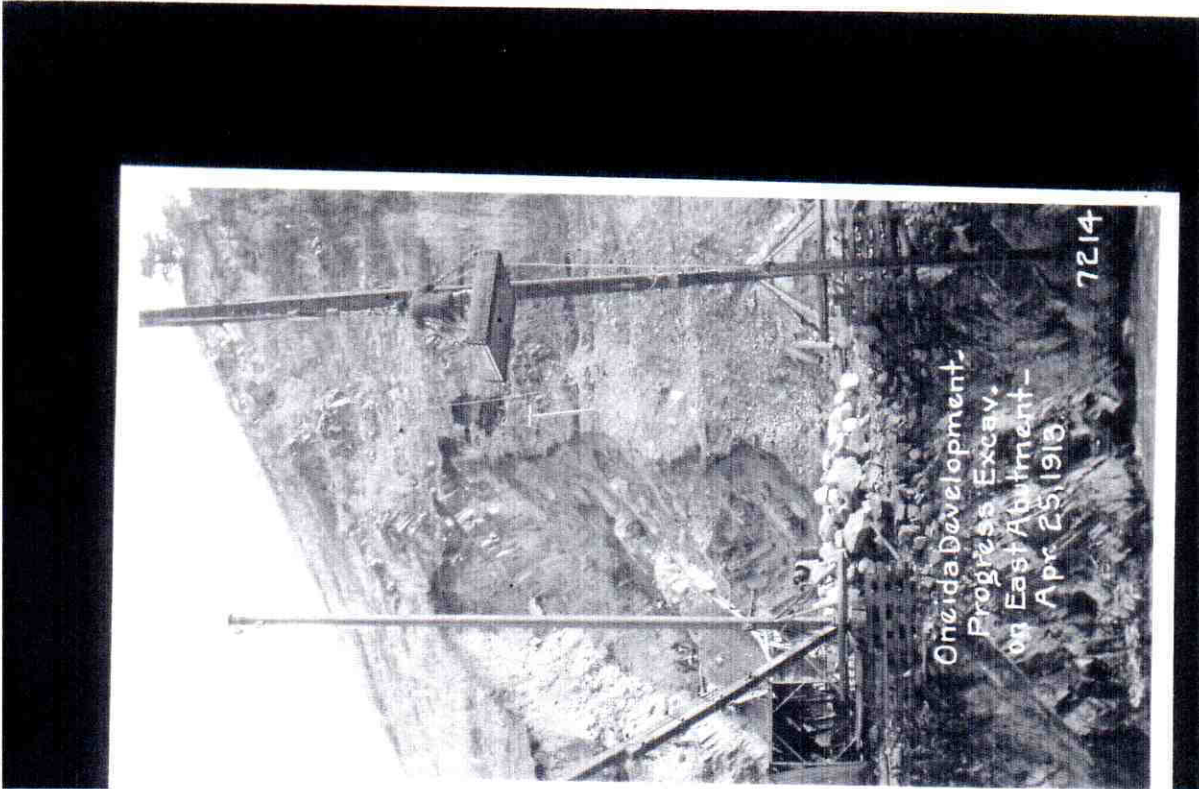
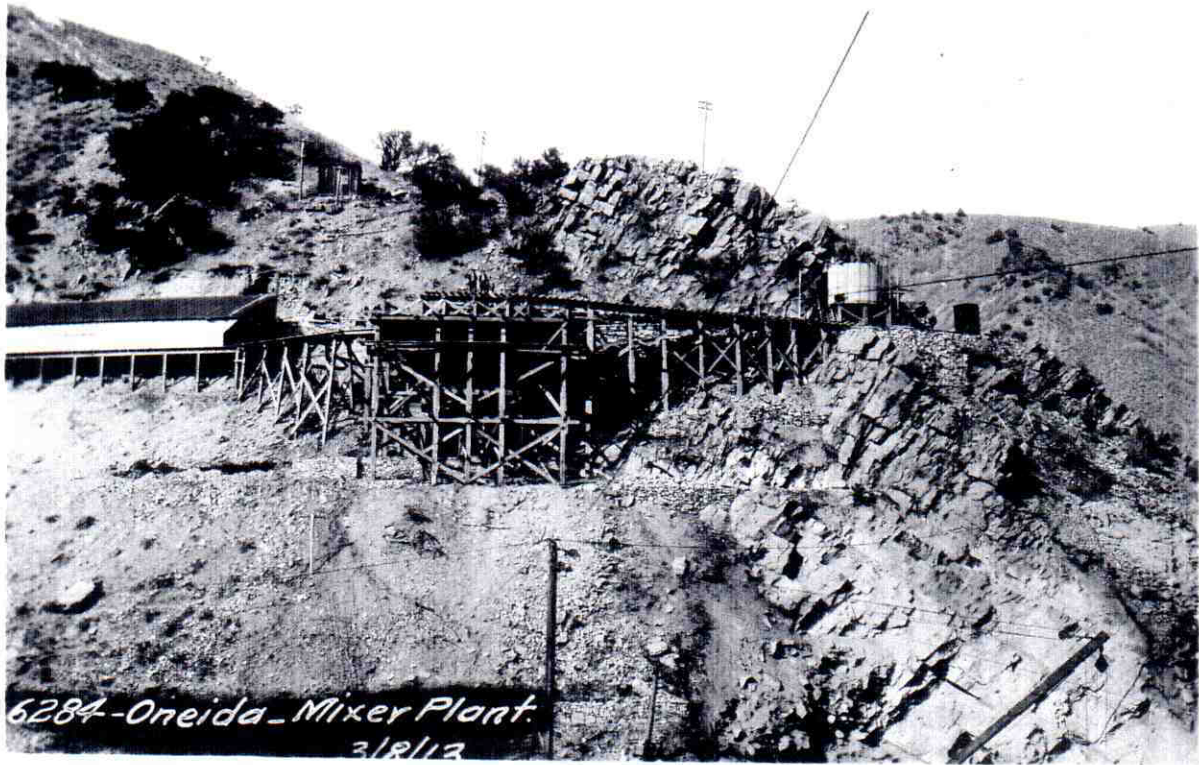


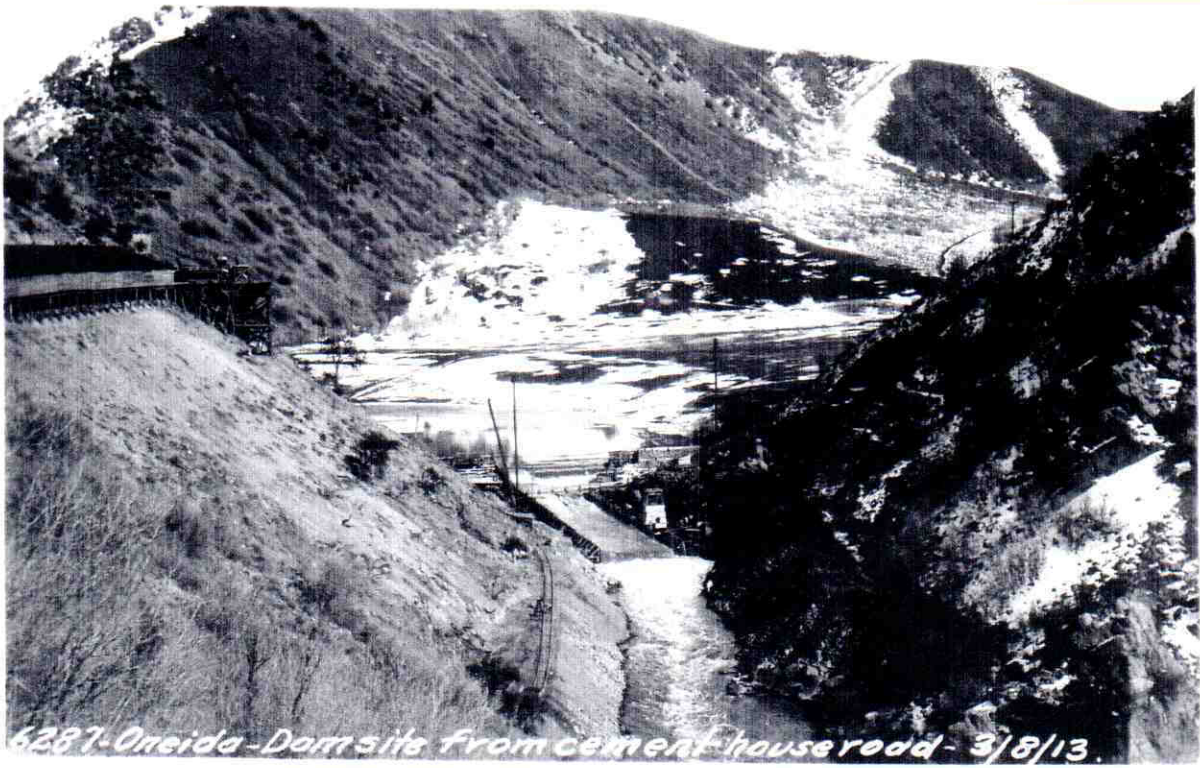
6473. Oneida. A conference on the ground - 3/21/13.



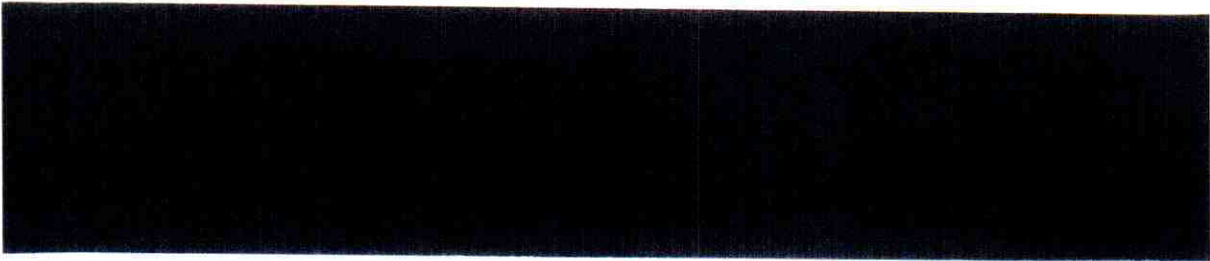


6285-Oreida-South Abutment of Dam-  
3/13/13

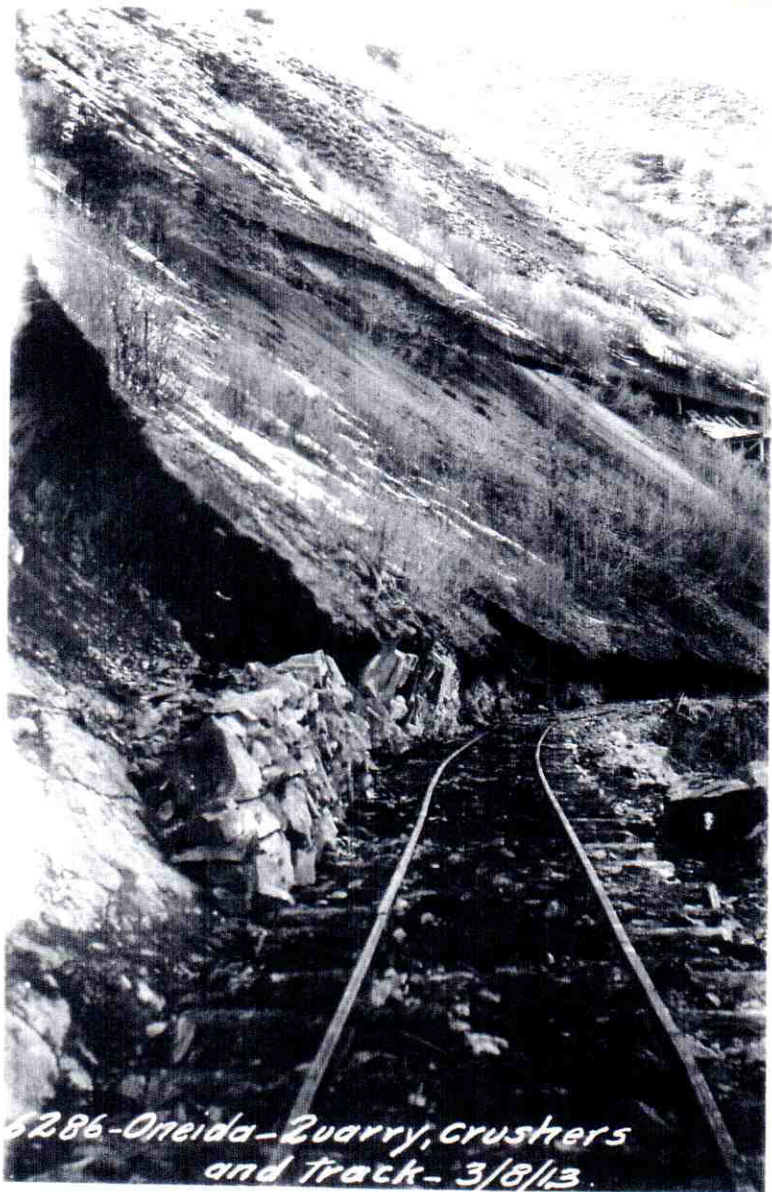




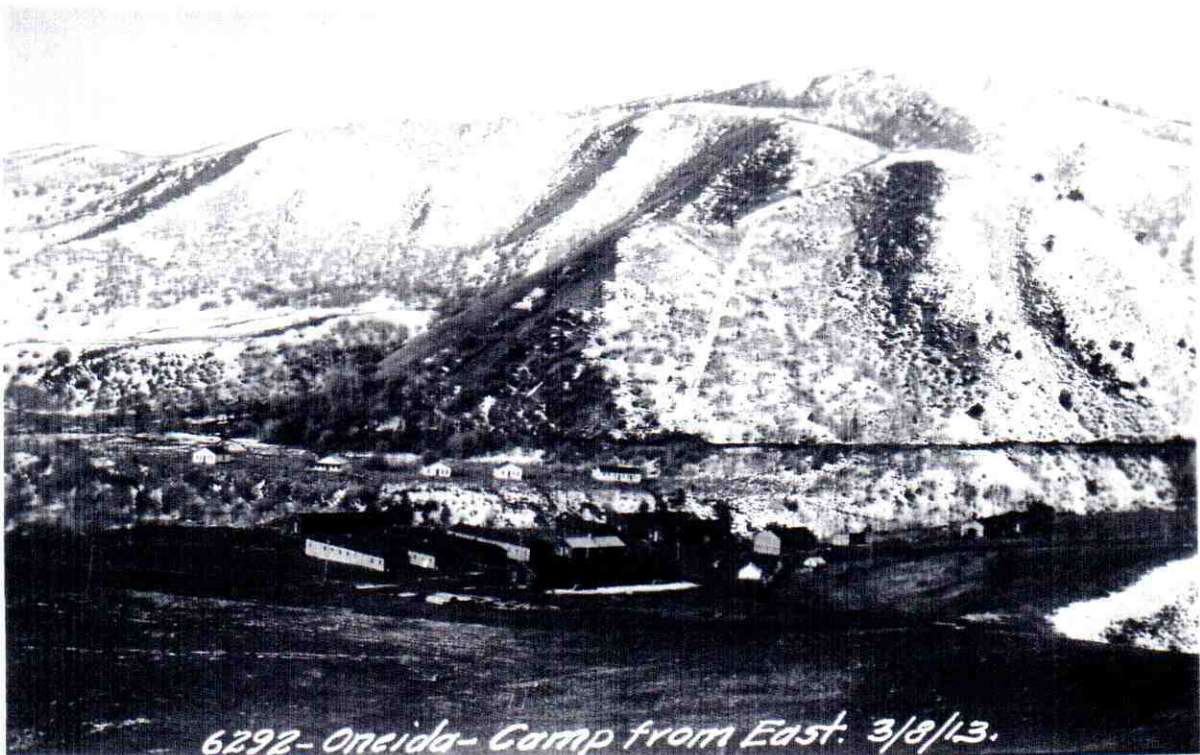
6287-Oneida-Dam site from cement house road-3/8/13.



6288-Oneida-Cement house and mixer plant-3/8/13.

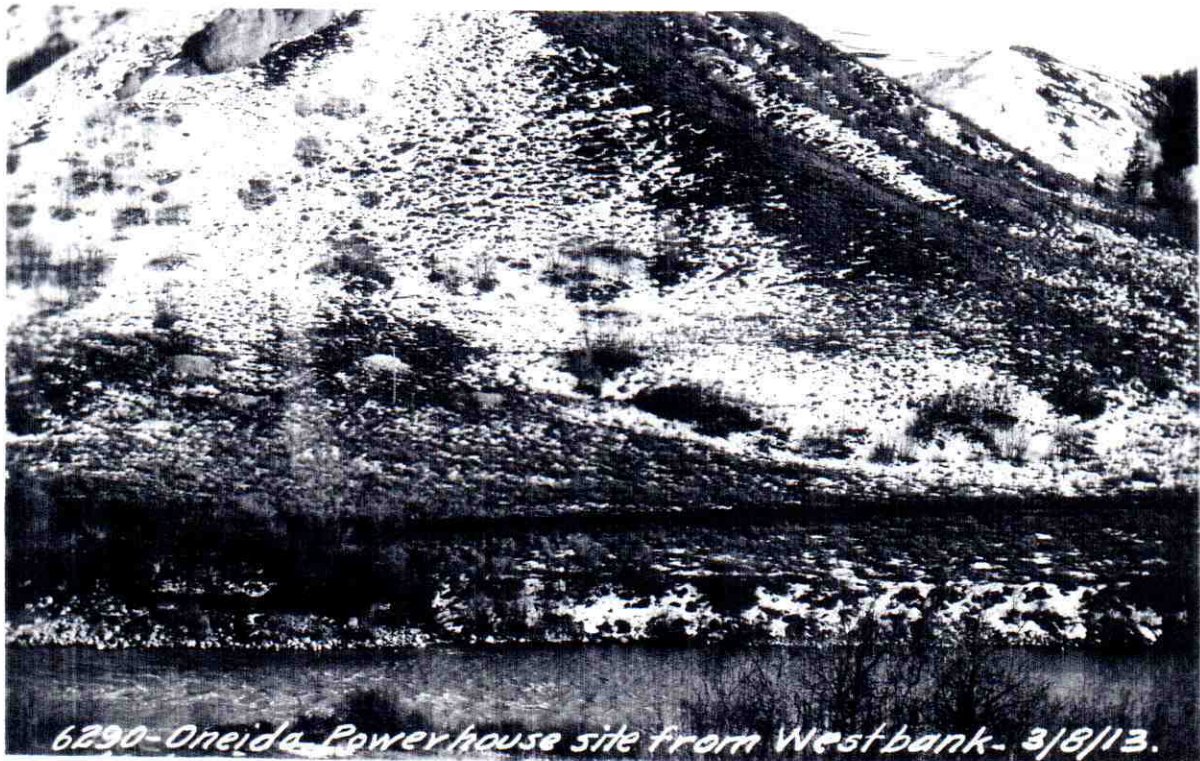


5286-Oneida-Quarry, crushers  
and track- 3/8/13.





6289-Oneida -  
Damsite from  
Lower hillside. 3/8/13.



6290-Oneida Powerhouse site from West bank. 3/8/13.



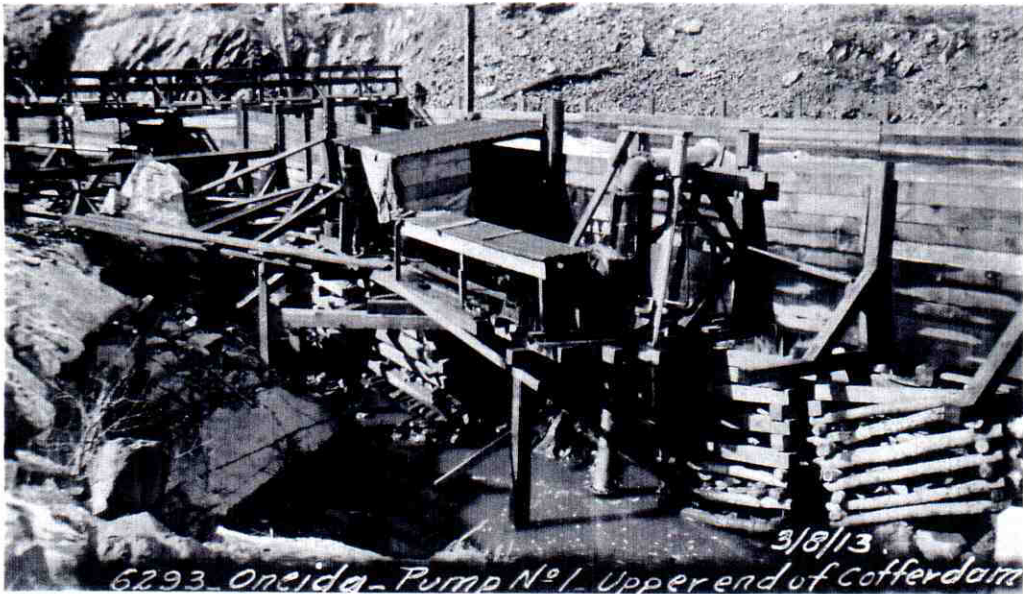
6296-Oneida-  
Mucking inside of  
Cofferdam- 3/8/13.



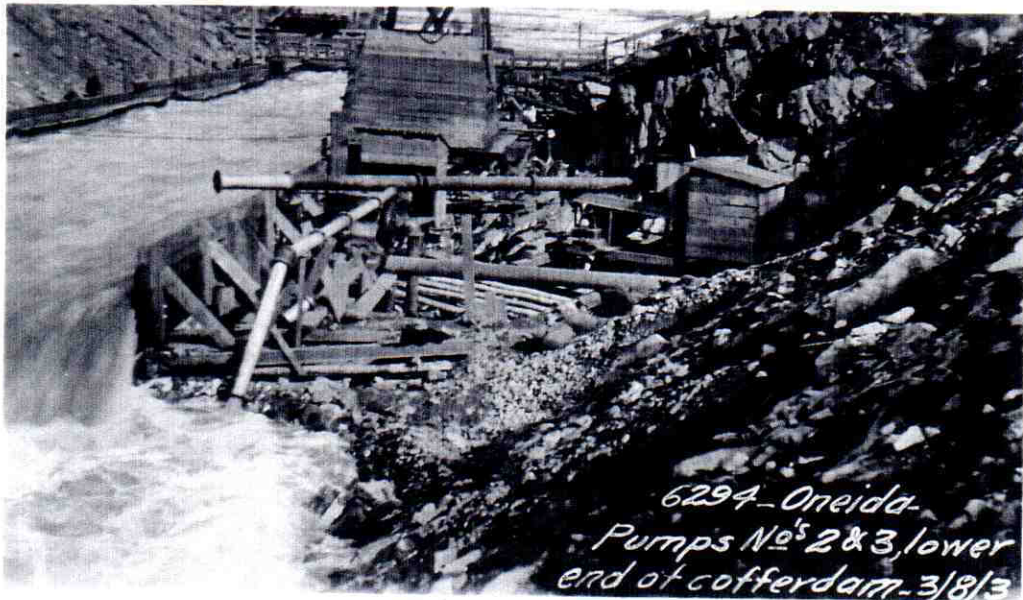
6297-Oneida- Flume intake from bridge. 3/8/13



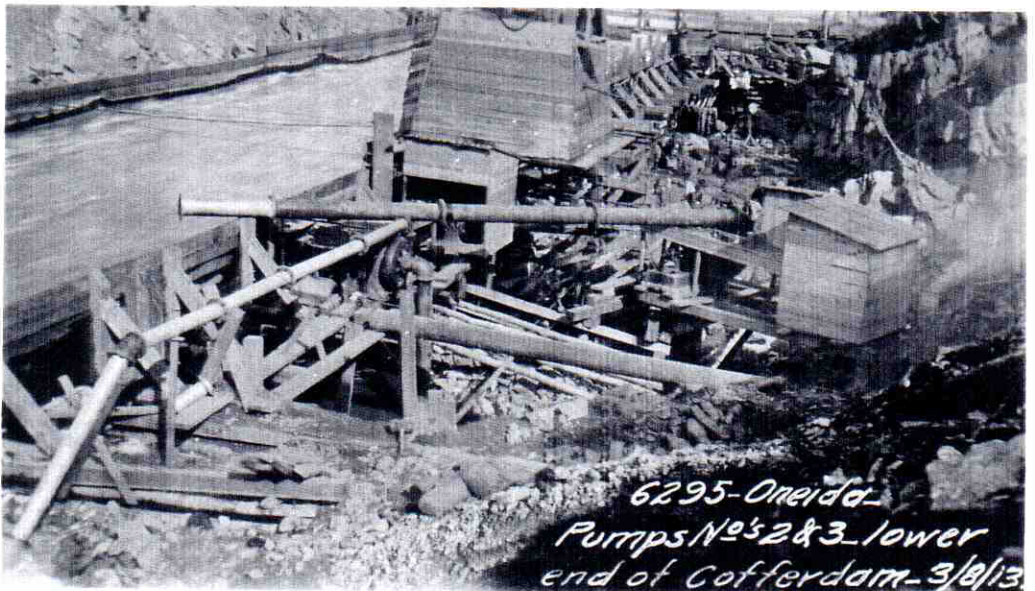
Oneida Development  
Box Culvert  
Through small Dike  
Apr. 25, 1913  
7215



6293 - Oneida - Pump No 1 - Upper end of Cofferdam



6294 - Oneida - Pumps No's 2 & 3, lower end of cofferdam - 3/8/13



6295 - Oneida - Pumps No's 2 & 3, lower end of Cofferdam - 3/8/13





ONEIDA DEVELOPMENT.  
VIEW OF COUNTY HIGHWAY ROAD  
MAY 11, 1913

7418



ONEIDA DEVELOPMENT.  
VIEW OF COUNTY HIGHWAY ROAD  
MAY 11, 1913

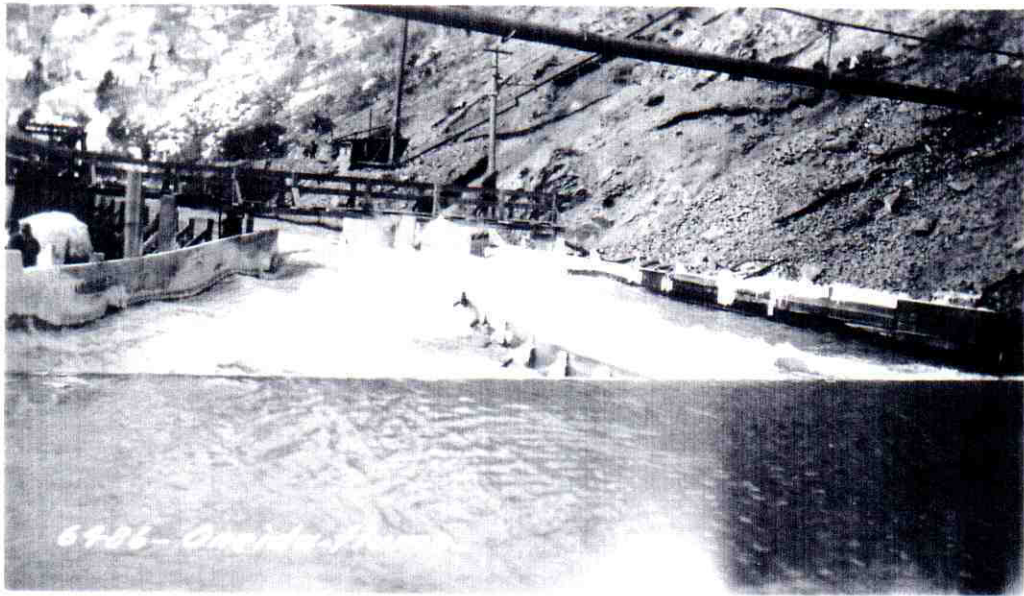
7419



ONEIDA DEVELOPMENT.  
VIEW OF COUNTY HIGHWAY ROAD  
MAY 11, 1913

7420





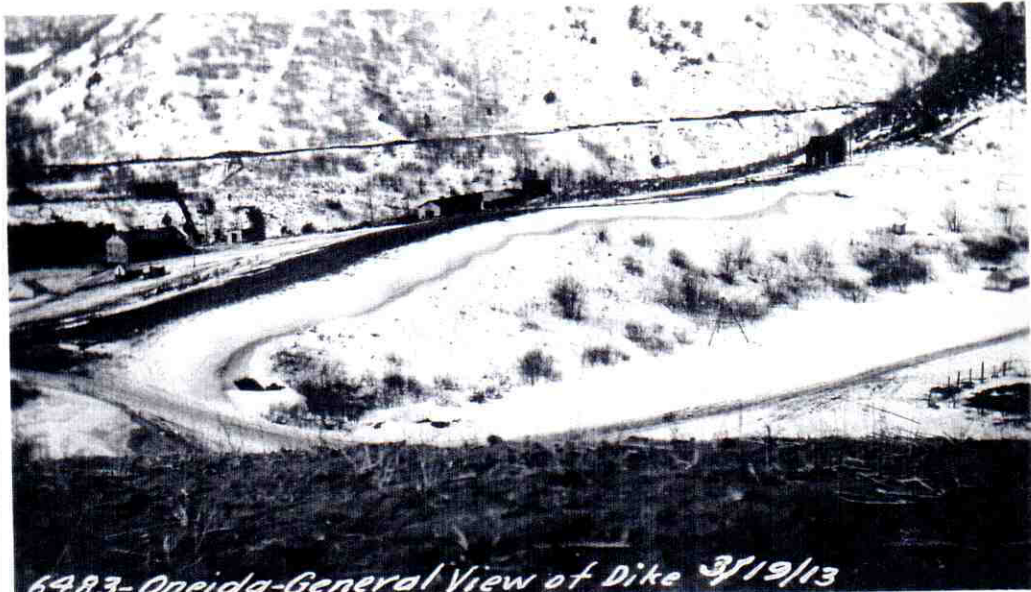
6486 - Onida - Power



6487 - Onida - Old dam and Turbine - looking up street 3/19/13



6488 - View of Cement storage house - 3/19/13

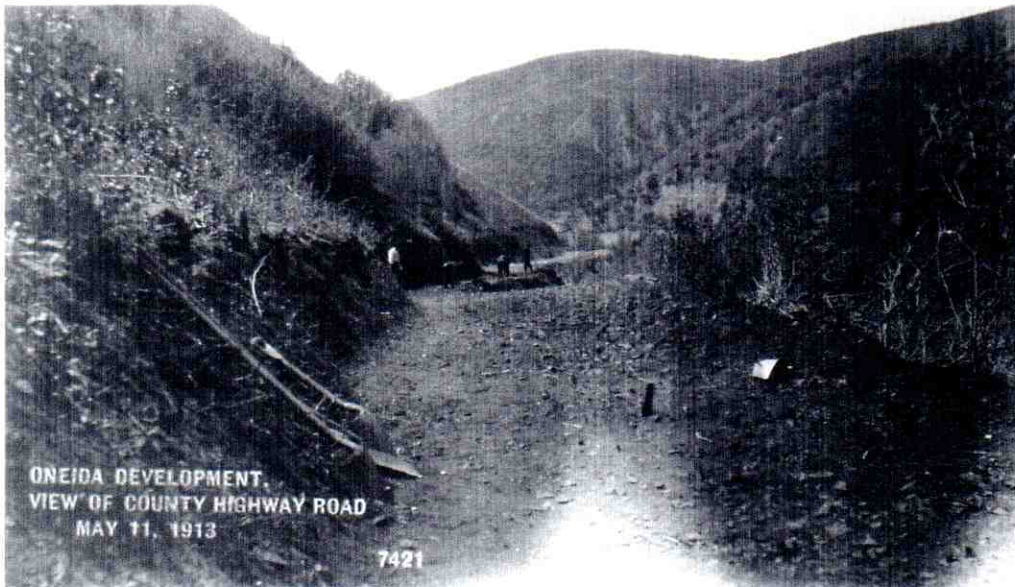


6483- Oneida- General View of Dike 3/19/13



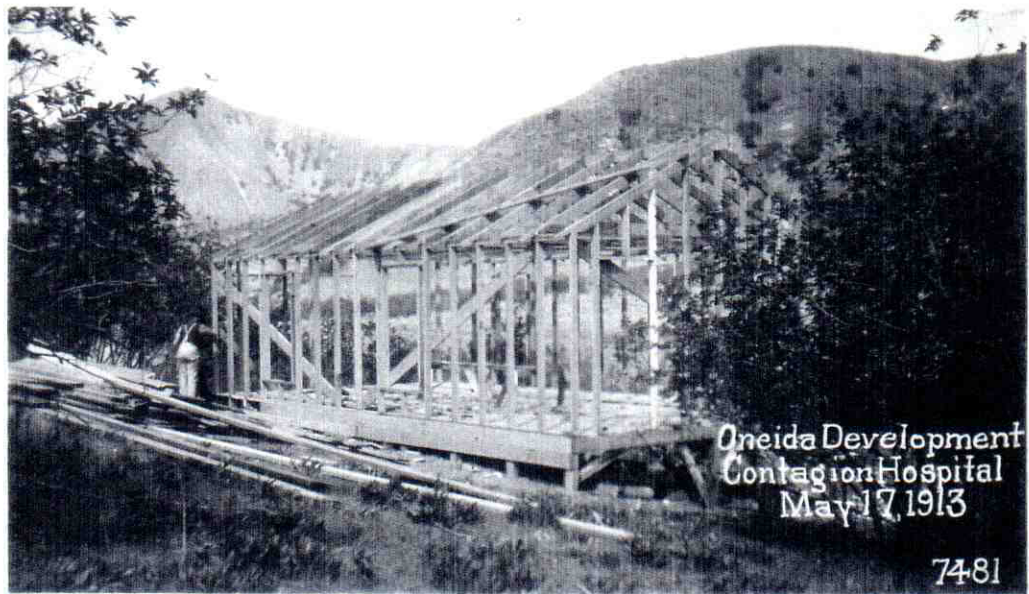
6484- Oneida - General View of Main construction camp- 3/19/13





ONEIDA DEVELOPMENT.  
VIEW OF COUNTY HIGHWAY ROAD  
MAY 11, 1913

7421



Oneida Development  
Contagion Hospital  
May 17, 1913

7481



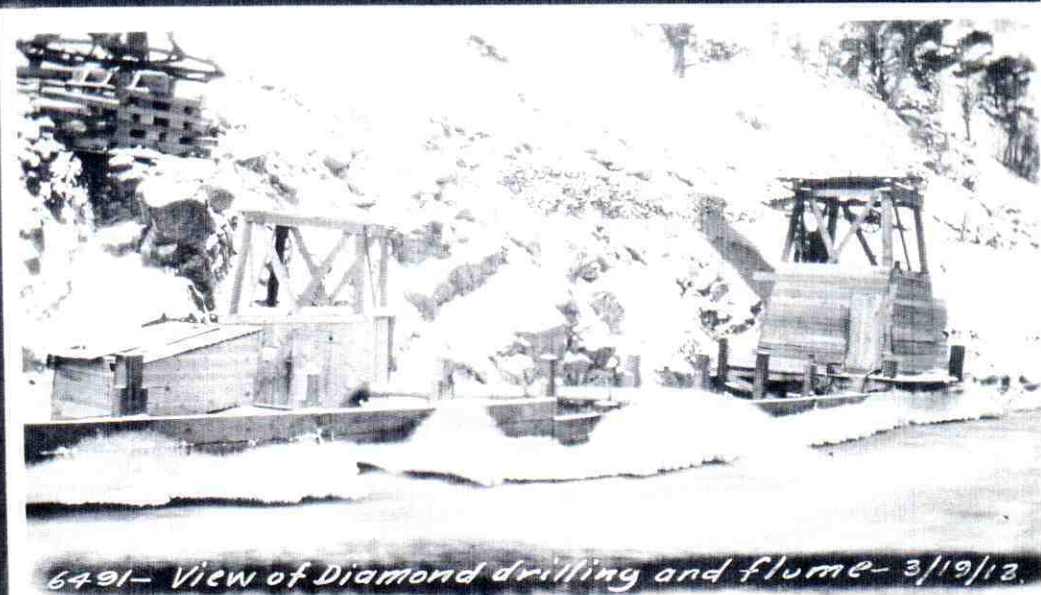
Oneida Development  
Detention Hospital  
May 17, 1913  
7482



6489-Oneida- General View of Dam looking up stream  
3/19/13



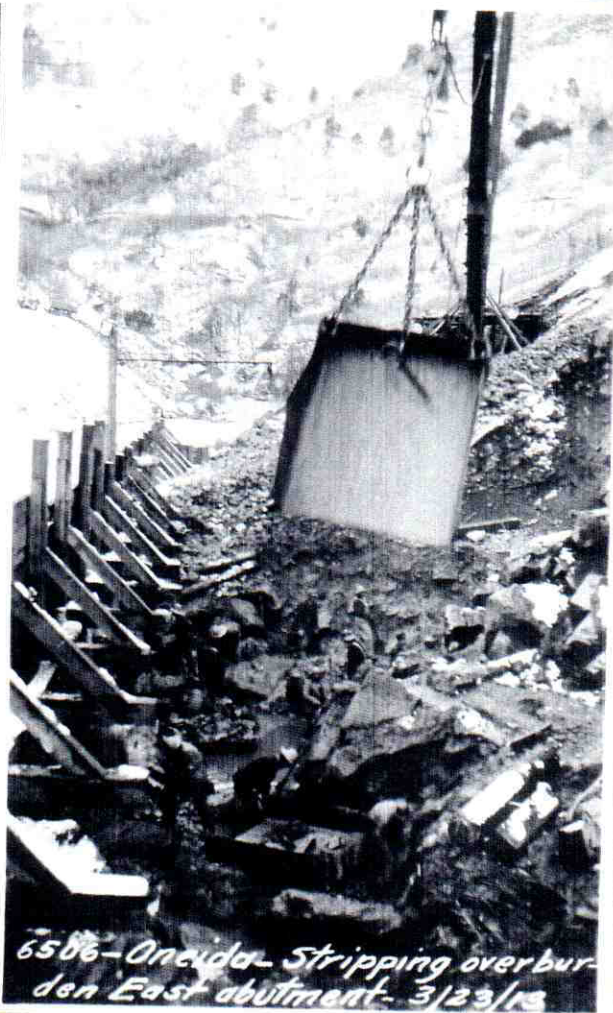
6490-Oneida-View of flume from lower end- 3/19/13.



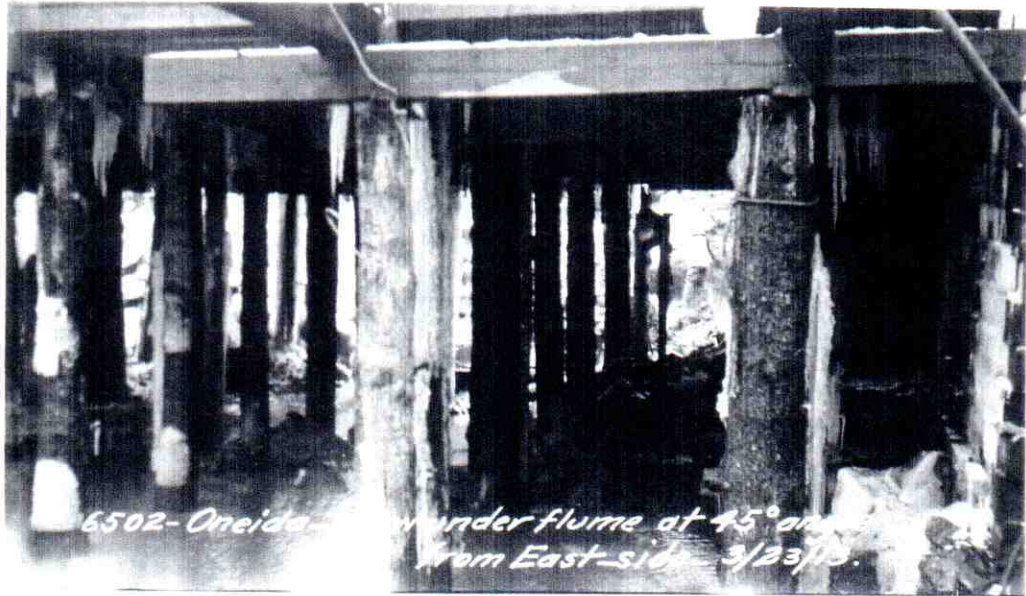
6491- View of Diamond drilling and flume- 3/19/13.



505-Oneida-Excavation-West  
side behind coffer Dam-3/23/13



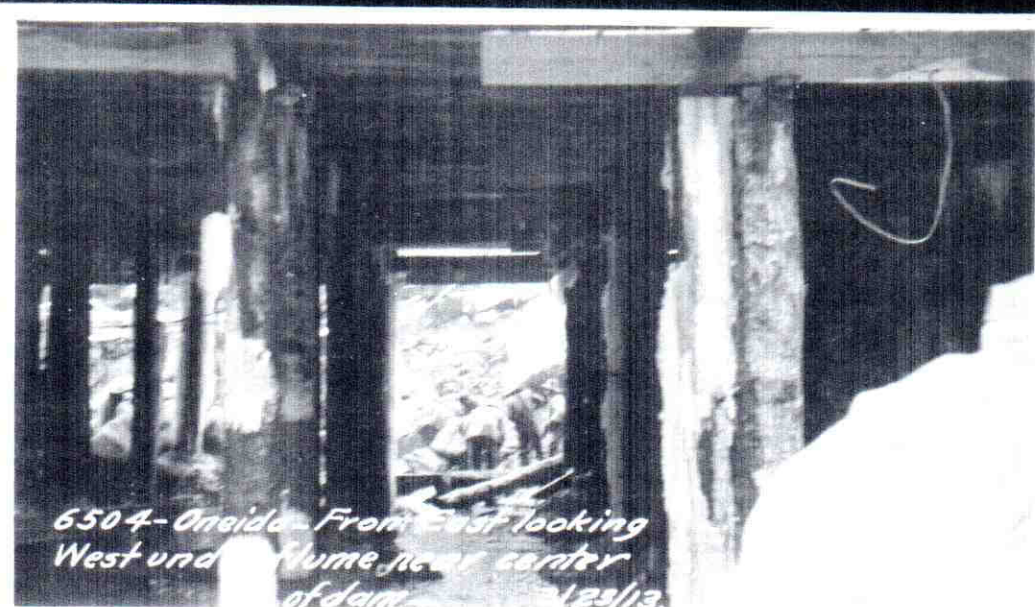
6586-Oneida-Stripping overbur-  
den East abutment-3/23/13



6502- Oneida - From East looking West under flume at 45° angle  
from East side - 3/23/13.



6503- Oneida - From East looking West under flume  
near face of dam - 3/23/13.



6504- Oneida - From East looking  
West under flume near center  
of dam - 3/23/13.



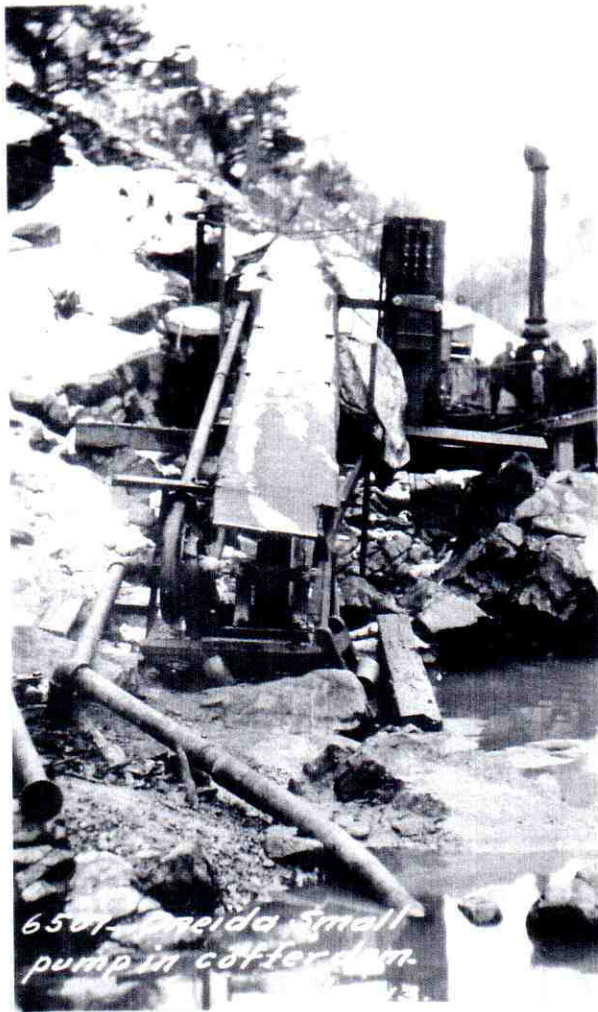


6504-Oneida-View diagonally  
of dam showing supports-  
3/23/13.

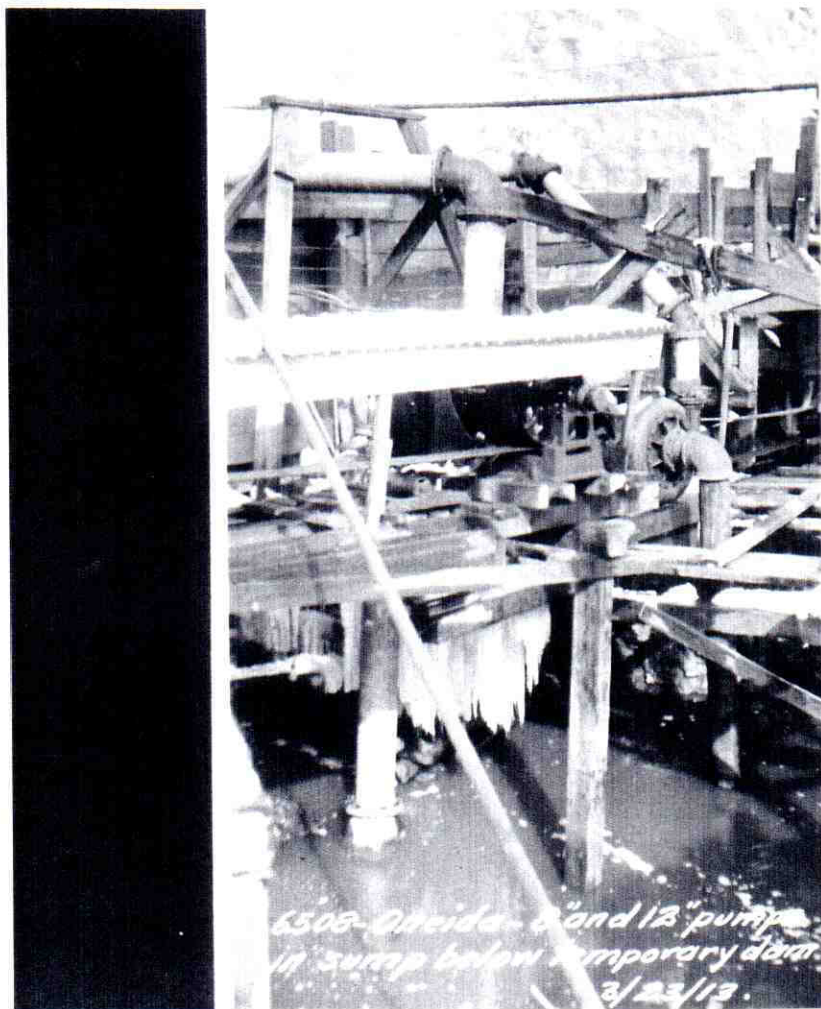


6510-Oneida-Under flume  
showing 4 to 5 ft of bank  
removed- 3/23/13.

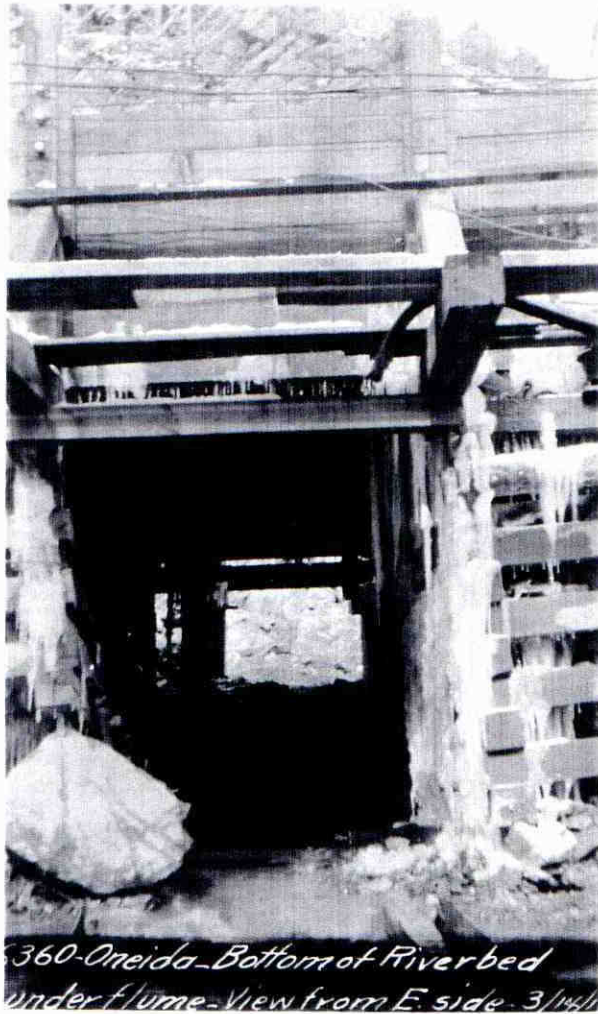
Keyway



6501 - Almeida small pump in coffer dam.



6505 - Almeida 8" and 12" pump in sump below temporary dam. 3/23/13.



360-Oneida-Bottom of River bed  
under flume-View from E. side-3/14/11