

Utah Securities Corporation

Utah Power & Light Company Utah Light and Traction Company

Financial and Physical Data
As of
March 31, 1915

This are the pictures from the Stockholders Report



Page 32

Utah Power & Light Company

Electrically Operated Hydraulic Dredge Excavating Outlet Canal from Bear Lake. 1,000 H.P. of Motor
Installed Floating Sub-Station to Left in Rear of Dredge



Page 33

Utah Power & Light Company
 Grace Hydro-Electric Generating Plant
 Concrete Bridge Supporting New Pipe Line Over Bear River



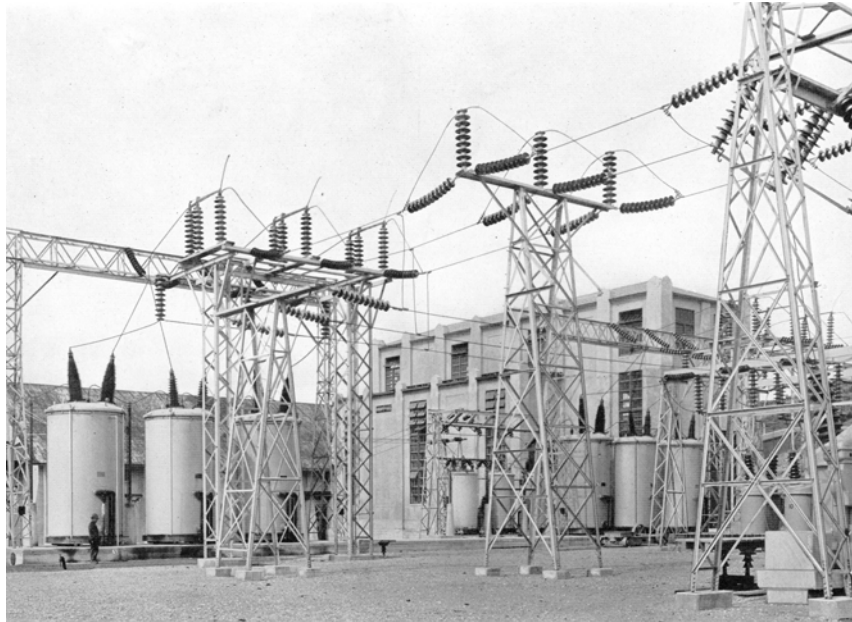
Page 34

Utah Power & Light Company
 Grace Hydro-Electric Generating Plant
 New Pipe Line, 11 Feet in Diameter, 23,000 Feet in Length, Supported on Reinforced Concrete Saddles



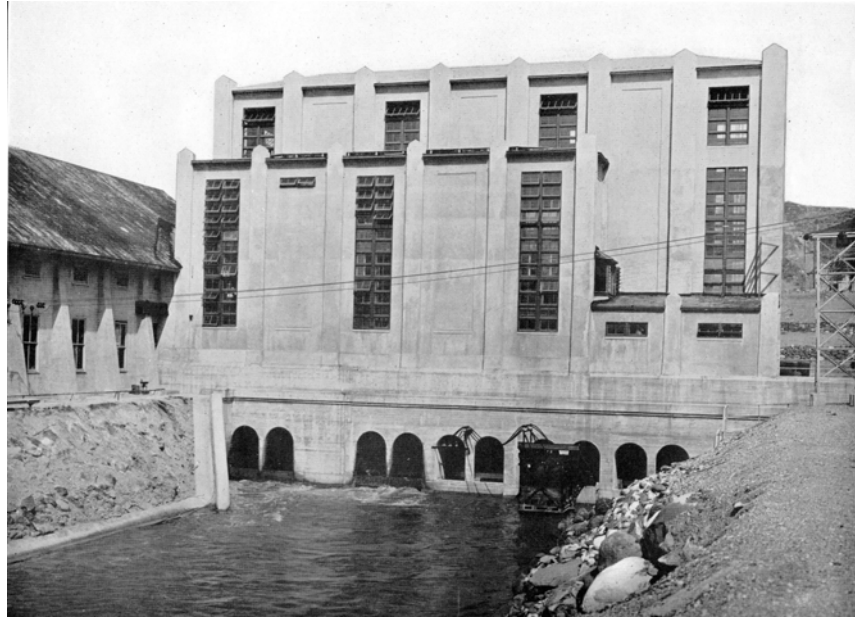
Page 35

Utah Power & Light Company
Grace Hydro-Electric Generating Plant. New Surge Tank, 30 Feet in Diameter, 130 Feet in Height



Page 36

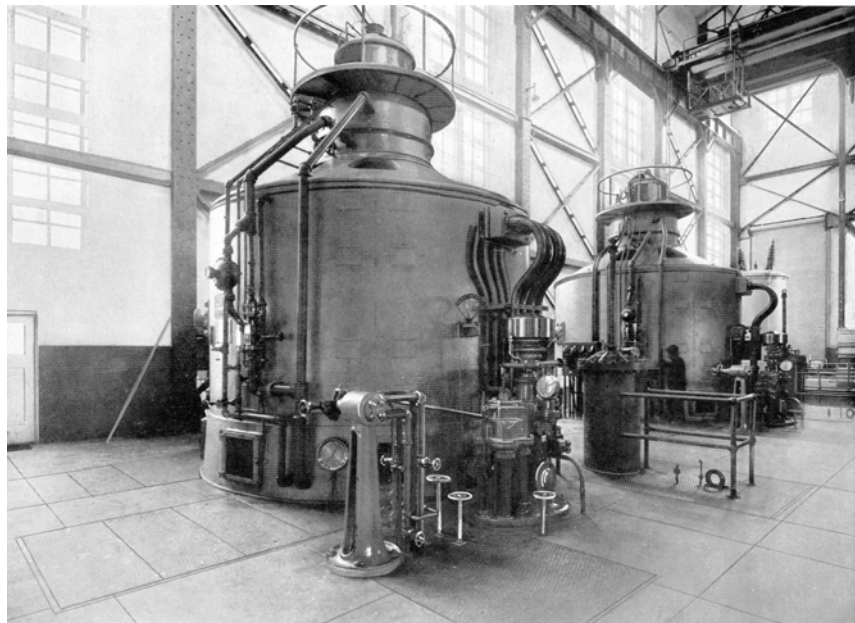
Utah Power & Light Company
Grace Hydro-Electric Generating Plant, Showing 130,000 Volt Transformers and Portion of Switchyard



Page 37

Utah Power & Light Company

Grace Hydro-Electric Generating Plant. New Station in the Center and Original Station at the Left.
Combined Installed Generating Capacity in both Stations 33,000 Kilowatts



Page 38

Utah Power & Light Company

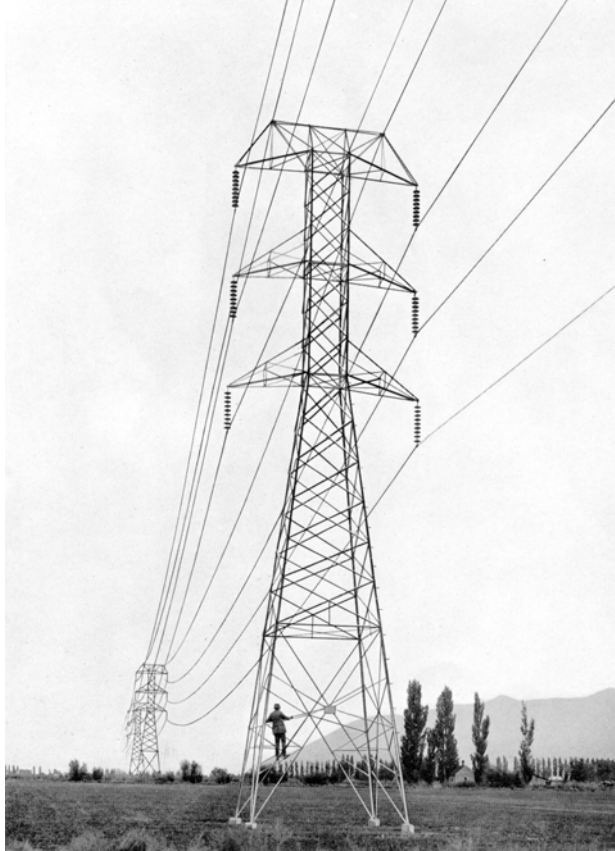
New Grace Hydro-Electric Generating Station, showing Two 11,000 Kilowatts Generators



Page 39

Utah Power & Light Company

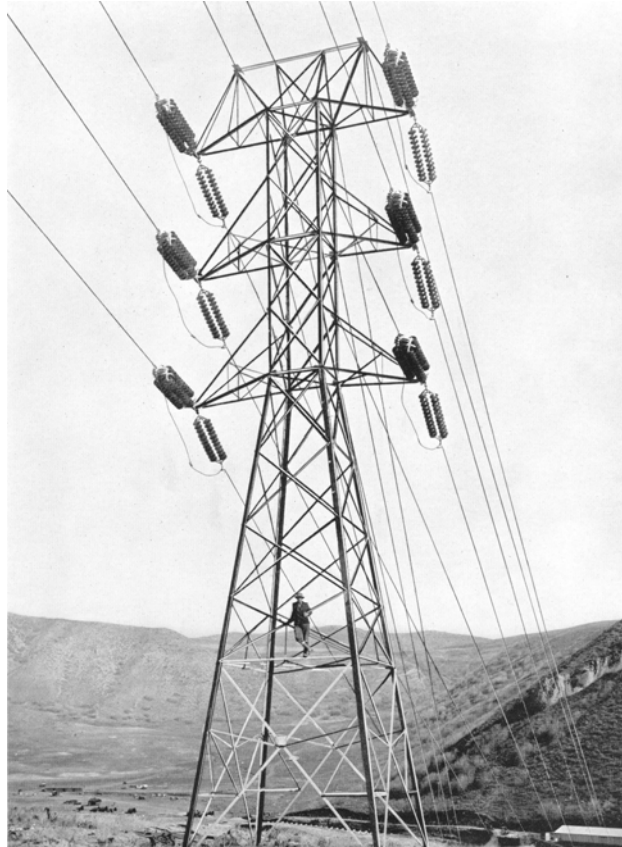
Dam at Oneida Development. Ultimate Height 116 feet. Intake to Control Gates and Pipe Lines in Distance



Page 40

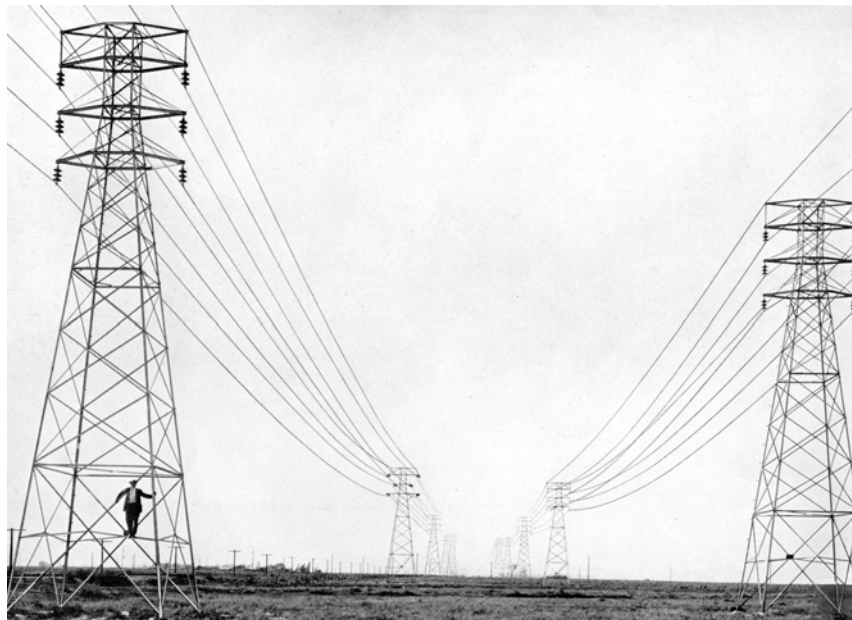
Utah Power & Light Company

Standard Construction, New 130,000 Volt, Double Circuit, Steel Tower Transmission Line, 133 Miles in Length



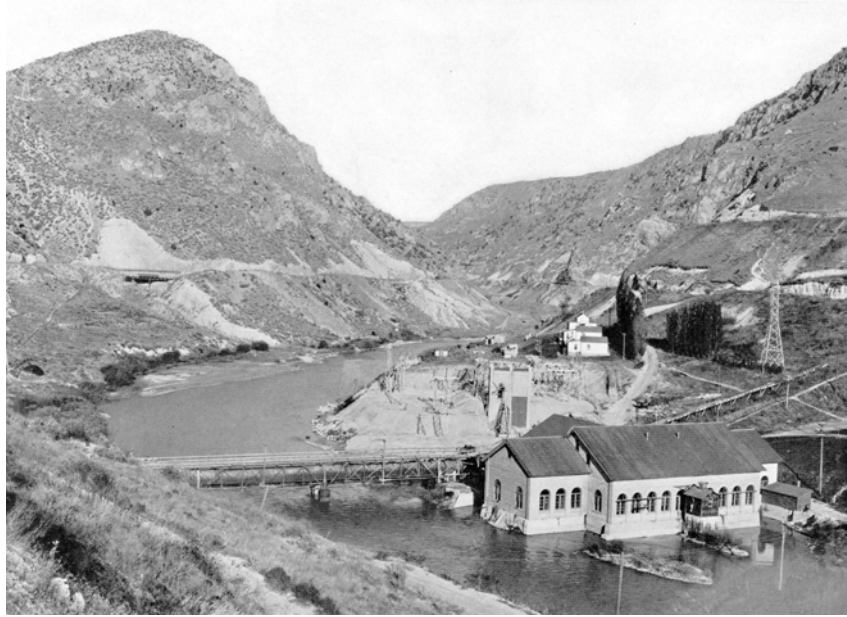
Page 41

Utah Power & Light Company
Steel Tower on 130,000 Volt Transmission Line, showing Special Group Insulators Supporting Conductors
Crossing Wide Ravines



Page 42

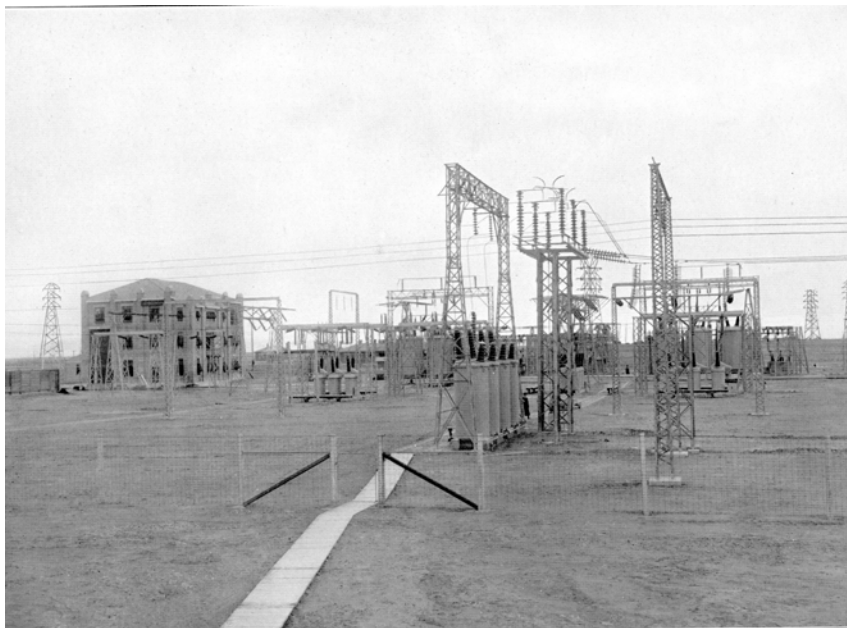
Utah Power & Light Company
Double Circuit, Steel Tower Transmission Lines, Operating at 44,000 Volts



Page 43

Utah Power & Light Company

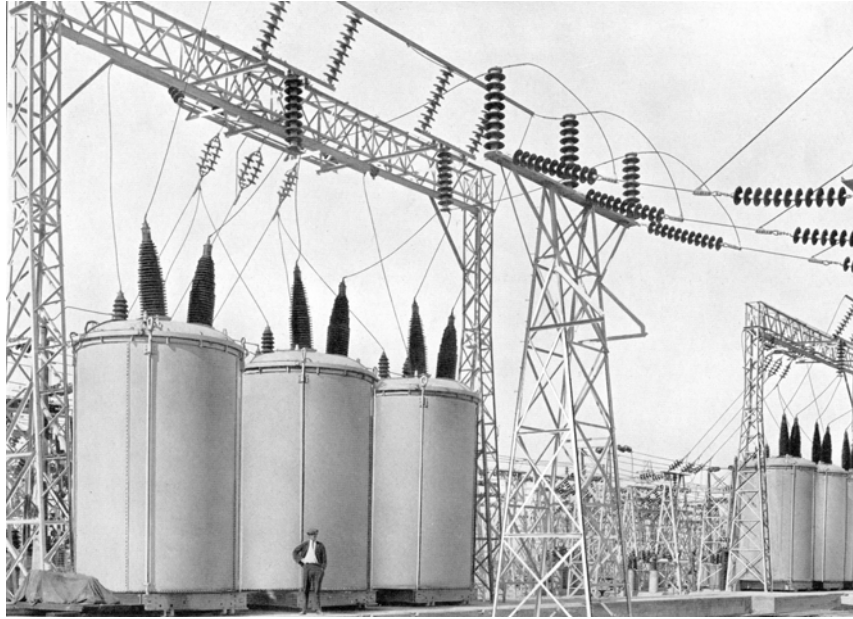
Wheelon Hydro-Electric Generating Station. Installed Generating Capacity 7,125 Kilowatts



Page 44

Utah Power & Light Company

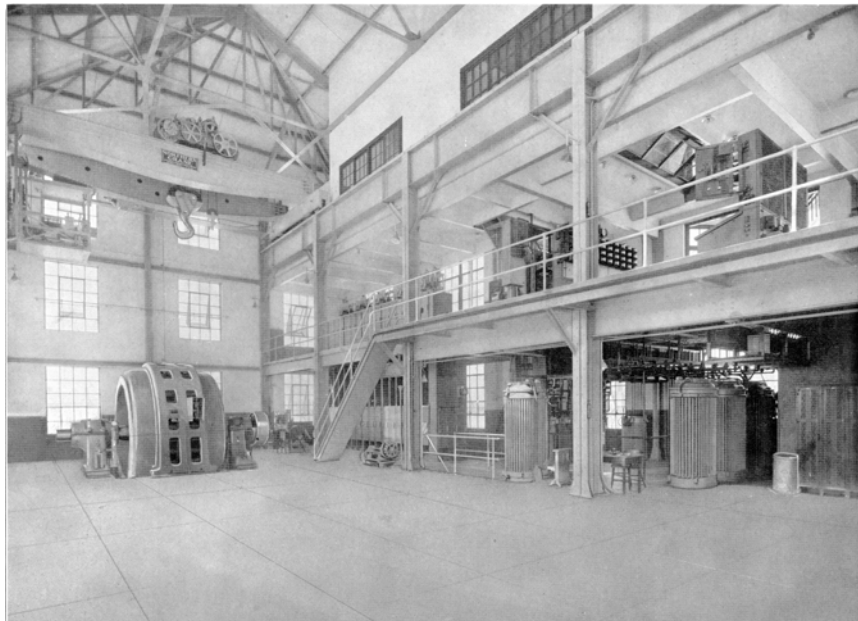
Terminal Sub-Station and Switchyard near Salt Lake City



Page 45

Utah Power & Light Company

Portion of Switchyard at Terminal Sub-Station near Salt Lake City, showing Six 130,000 Volt Transformers Total Capacity 45,000 Kilowatts



Page 46

Utah Power & Light Company

Terminal Sub-Station near Salt Lake City, showing 7,500 Kilowatts Synchronous Condenser. This Building Contains the Control Apparatus for Operating the Electric Switches in the Adjoining Switchyard and also Houses the Dispatchers in Charge of System Operations



Page 47

Utah Power & Light Company

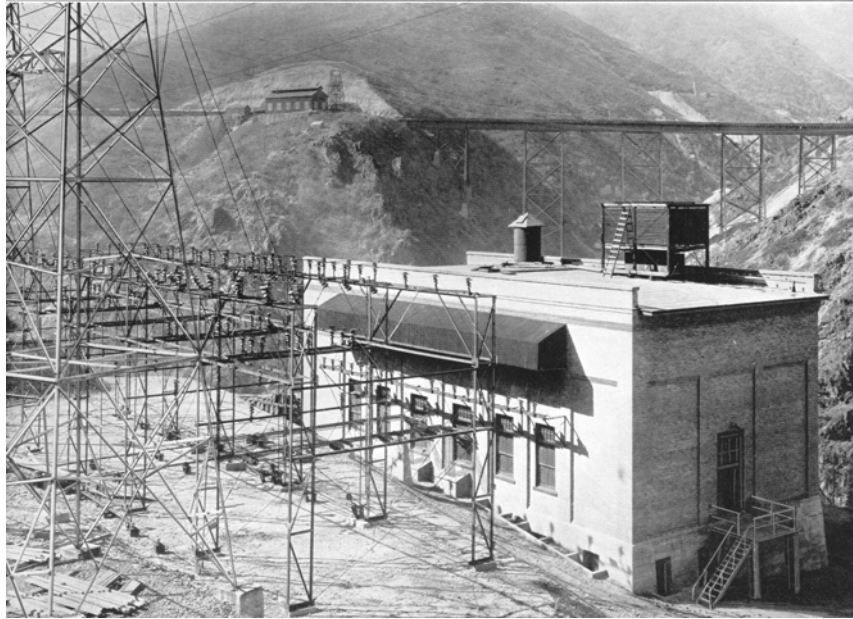
Hydro-Electric Generating Station at Logan, Utah, Installed Generating Capacity 2,000 Kilowatts



Page 48

Utah Power & Light Company

Olmsted Hydro-Electric Generating Station. Installed Generating Capacity 7,200 Kilowatts



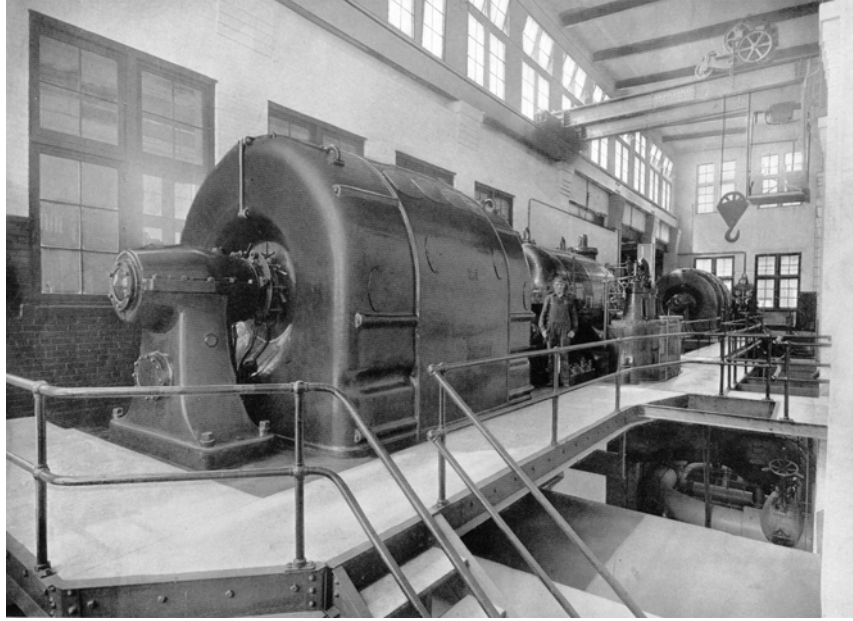
Page 49

Utah Power & Light Company
Bingham Sub-Station and Switch Rack, Serving Utah Copper Company and Other Mines



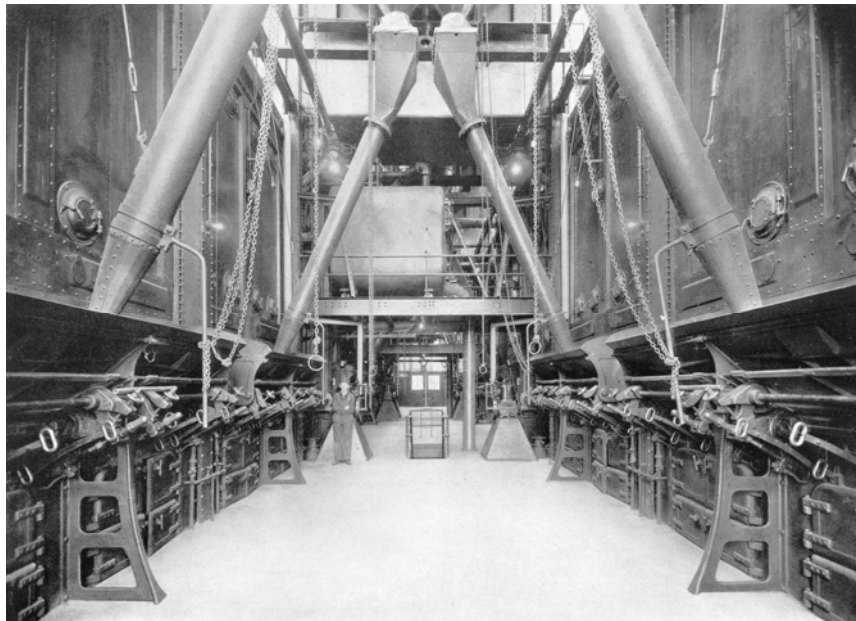
Page 50

Utah Light and Traction Company
Jordan Steam Electric Generating Station in Salt Lake City. Leased to Utah Power & Light Company.
Installed Generating Capacity 16,000 Kilowatts. Sub-Station on Left Connects Hydro-Electric System with
Steam Station and City Distribution System



Page 51

Utah Light and Traction Company
Turbine Room of Jordan Steam Electric Generating Station at Salt Lake City, showing Two 8,000
Kilowatts Steam Turbines



Page 52

Utah Light and Traction Company
Boiler Room of Jordan Steam Electric Generating Station



Page 53

Utah Light and Traction Company

West Temple Street Sub-Station. Leased to Utah Power & Light Company. Principal Distribution Sub-Station for Light and Power in Salt Lake City. Connected with Jordan Steam Electric Station and Hydro-Electric System



Page 54

Utah Light and Traction Company
Car Barn and Repair Shops in Salt Lake City



Page 55

Partial View of Utah Copper Company's Porphyry Copper Mine at Bingham, Utah
Utah Power & Light Company supplies Utah Copper Company, under 25-year Contract, all the Power for its Mining and Milling Operations at Bingham, Garfield and Vicinity. This Mine, Operating at Present normal Daily Capacity of 23,000 Tons of Ore, is Estimated to have a Life of more than Sixty Years



Page 56

Magna Mill of Utah Copper Company at Garfield, Utah
10,020 H.P. of Motors Installed. Served by Utah Power & Light Company



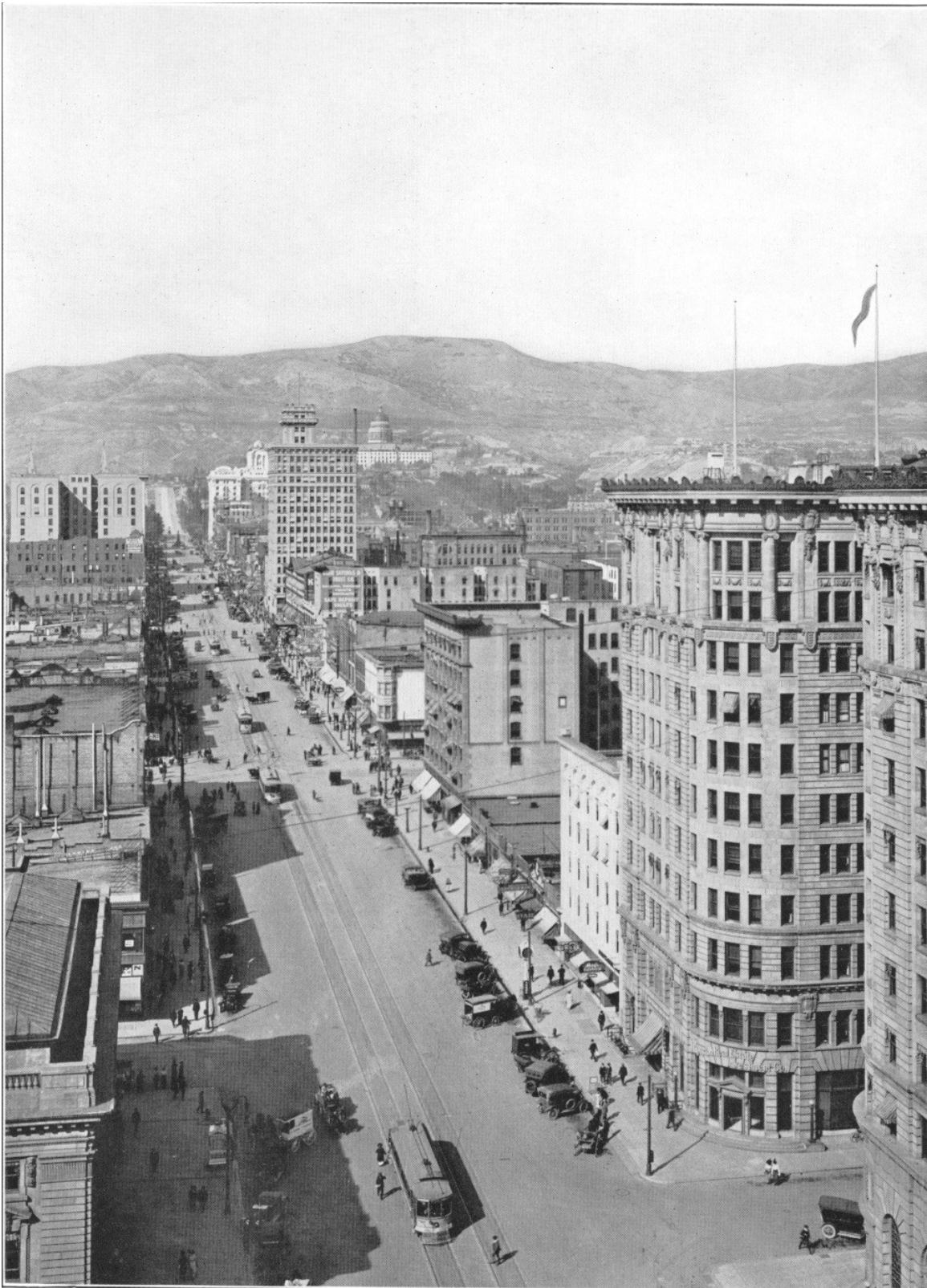
Page 57

Arthur Mill of Utah Copper Company at Garfield, Utah
7,153 H.P. of Motors Installed. Served by Utah Power & Light Company



Page 58

Union Portland Cement Company's Plant at Devils Slide. 3,852 H.P of Motors Installed. Served by Utah
Power & Light Company



Page 69
Main Street, Salt Lake City