

**Final Notes
 Bear River License Implementation
 Environmental Coordination Committee Meeting
 April 20, 2005
 Grace, Idaho**

Commitments Made at the April 2005 ECC Meeting	
All	<ul style="list-style-type: none"> • As ECC projects go forward this spring and summer, photograph areas where work is being conducted and get “before” pictures of project sites. • Review the draft memo to FERC regarding the Bear River Narrows project (Twin Lakes) and be prepared to vote at the May ECC meeting. • Forward comments on the draft Removal Plan and Environmental Report to Monte Garrett. • Review draft Grace Site Plan. If any concerns are not addressed in the plan, contact Eve Davies as soon as possible, as field work is beginning.
Monte Garrett	<ul style="list-style-type: none"> • Inquire about adding additional hydrograph information to the website. • Once final Black Canyon Monitoring Plan is complete, begin work on RFP for Black Canyon monitoring.
Proposal Funding Subcommittee members	<ul style="list-style-type: none"> • Prepare long forms for funding proposals. Distribute to other subcommittee members by May 9. • Meet May 16 at IDEQ offices in Pocatello to rank proposals
Greg Mladenka	<ul style="list-style-type: none"> • Incorporate comments from outside reviewer into the Black Canyon Monitoring Plan. Distribute revised BCMP to subcommittee and Garrett. Send to Susan Kammerdiener to finalize.
Miriam Hugentobler	<ul style="list-style-type: none"> • Put together 2005 binders for ECC members
Deb Mignogno	<ul style="list-style-type: none"> • Facilitate May ECC meeting
Claudia Conder	<ul style="list-style-type: none"> • Continue to gather information on proposed land purchase.

Decisions Made at the April 2005 ECC Meeting

- Continue meeting monthly, at least until the Settlement Agreement for Cove is complete.
- Continue to rotate facilitation duties among ECC members.
- Extend review period for the memo to FERC regarding the Bear River Narrows project (Twin Lakes). A vote will be taken at the May ECC meeting.
- Consider a land purchase in the project area.

ECC Members Present

Monte Garrett, PacifiCorp
Jim Capurso, U.S. Forest Service
Warren Colyer, Trout Unlimited
Pat Koelsch, Bureau of Land Management
Greg Mladenka, Idaho Department of Environmental Quality
Dave Teuscher, Idaho Department of Fish and Game

Others Present

Eve Davies, PacifiCorp
Glen Pond, PacifiCorp
Claudia Conder, PacifiCorp
Clair Bosen, Twin Lakes Canal Company
Bruce Parry, Northern Shoshone Tribe
Jeff Seamons, Citizen of Preston
Tom Lucia, Sagebrush Steppe Land Trust
Joan Hansen, Sagebrush Steppe Land Trust

ECC Members Not Present

Susan Rosebrough, National Park Service
Lynn Van Every, Idaho Department of Environmental Quality (Greg Mladenka sitting in)
Kevin Lewis, Idaho Rivers United
Hunter Osborne, Shoshone Bannock Tribes
Mary Lucachick, Idaho Department of Parks and Recreation
Jim Mende, Idaho Department of Fish and Game (Dave Teuscher sitting in)
Blaine Newman, Bureau of Land Management (Patrick Koelsch sitting in)
Marv Hoyt, Greater Yellowstone Coalition

Participating by Telephone

Deb Mignogno, U.S. Fish and Wildlife Service
Hunter Osborne, Shoshone-Bannock Tribes (part of the day)
Charlie Vincent (part of the day/for Black Canyon discussion)

Opening Comments – Monte Garrett

Notes from the March ECC meeting were accepted without revisions.

Proposal Funding Subcommittee

The ECC heard a report from the Proposal Funding Subcommittee, which met just prior to the regular ECC meeting. Garrett discussed the process used to screen funding proposals. Eleven proposals for funding have been received. An ECC sponsor, who will contact the applicant and fill in the “long form” application, was assigned for each proposal. The subcommittee will meet again on May 16 to rank the proposals. Garrett said the ECC has received far more proposals than can be funded this year, including proposals for conservation easements, weed control, irrigation diversion screening, range improvement, and fencing of riparian areas.

Thermal Imaging RFP

Garrett said the RFP for thermal imaging has been posted on PacifiCorp’s website and specific vendors have been contacted, and proposals are due May 2. He said he expected the project to be mobilized by June.

FERC Filings

Garrett said the Historic Properties Management Plan has been filed with FERC. He also briefed the ECC on the March site visit to the project area by FERC compliance staff and noted that the site visit had gone well. Garrett said FERC approval for a series of plans submitted as part of license implementation was received shortly after the site visit.

Facilitation and Meeting Schedule

The ECC agreed to continue meeting monthly, at least until the Settlement Agreement for Cove is complete. The ECC also agreed to continue rotation of facilitation duties for monthly meetings. Deb Mignogno agreed to facilitate the May meeting.

ECC Brochure/Outreach Efforts

The need for a pamphlet to publicize the ECC’s work was discussed, and the ECC agreed that with the number of proposals for funding received recently, a pamphlet was not needed at this time. The ECC agreed to revisit the subject if the number of proposals received in the future decreases. Jim Capurso said the ECC should continue outreach efforts, and get public exposure for work being conducted this spring. ECC members were asked to photograph places where work is being conducted, and be sure to get “before” pictures of the project areas.

Telemetry Study – Dave Teuscher

Teuscher updated the ECC on Telemetry Study efforts. Teuscher said he received fish tags 10 days ago and started electrofishing and sampling fish on the Bear. Teuscher said he began electrofishing on the lower reaches and worked up. No Bonneville cutthroat trout were caught in first section, and although there was discussion of using rainbow for

surrogates, Tuescher did not tag any on this section. He noted lots of parasites on fish captured (black spot) in this area but said black spot does not cause fish mortality. Tuescher said in the second section, electrofishing was good and a lot of trout were caught but no Bonneville cutthroat trout. In the third section (Alexander), Tuescher said he found plenty of Bonneville cutthroat trout and tagged about 15, with the goal of tagging about 20. He said this is a good time to sample, and there is plenty of water in the river. Teuscher said he plans to sample other locations (in all three reaches) again in the fall, but has nearly finished for spring. He said he will try the Thatcher area again and if no fish are caught in the lower reaches then, he will try again post-spawning.

Other Updates

Stocking of Rainbow Trout in the Project Area – In reference to the recent newspaper article on Idaho Department of Fish and Game’s stocking of rainbow trout near Grace, Teuscher said he had been told by an “old timer” that flow had stopped in the recently stocked reach about 20-30 years ago, and he had been disappointed to lose the fishery. Teuscher said local anglers seem happy about having water and fish in that reach again.

Whitewater Boating Flows – Eve Davies noted that about 30 boaters used the Grace reach over the weekend (during high flows), and reported they were happy about the conditions in the river.

Hydrograph Data - Teuscher asked whether flow measurements over a longer period of time could be made available on the website’s hydrograph. Garrett said he would look into it, but suggested that Teuscher call Connely Baldwin (PacifiCorp) for additional flow information in the meantime.

<Break for Lunch>

Twin Lakes Position

Garrett introduced Clair Bosen (Twin Lakes Canal Company) and Bruce Parry (Northern Shoshone Tribe). He noted that as agreed at the March ECC meeting, the ECC had drafted a position memo on Twin Lakes’ proposed Bear River Narrows project. Garrett said that Bosen had asked for time at this meeting, before the ECC files its memo with FERC, and because there was no time available this month, Bosen had asked for time at the May meeting. Garrett asked Bosen about time constraints, as FERC would probably not be making a decision on the Bear River Narrows project in the near future. Bosen said Twin Lakes will be filing a status report on the project in July but he did not believe there would be a FERC decision in the near future. He noted that the feasibility study for the project has not yet been filed with FERC.

Warren Colyer asked Bosen if anything has changed since his presentation at the March meeting. Bosen said no, but he believes there is a lot of common ground between the ECC and his group and he believes his group of stockholders has a lot to offer the ECC.

Garrett said the question is, is it worth everyone's time to write up specific concerns, and for Twin Lakes to respond to them, if we are not going to support their position? He said there is concern among ECC members that we not lead anyone on that the ECC and Twin Lakes may come to agreement in the future. Garrett called for an ECC caucus, and Bosen and Parry left the room.

<caucus>

Bosen and Parry returned following the caucus and Garrett told them that PacifiCorp has already stated its position on the Bear River Narrows project, and so has the ECC. He said Twin Lakes may contact agency representatives independently outside the forum of the ECC, but it would probably not be useful to continue presentations by Twin Lakes at ECC meetings.

Bosen said OK, but stated concern about the ECC's planned memo to FERC and said he hoped it would not "close the door." Garrett said a letter to FERC may or may not go out. If so, the message would not be different than previously stated by the ECC.

Bosen said he hates to see a closed door when the farmers and the ECC have so much in common.

Pat Koelsch said that Twin Lakes' proposal is diametrically opposed to the Settlement Agreement, which agencies have already invested five years of work in. He said he was stating this so that Bosen could communicate to his constituents that it will be very difficult to gain agency support by ECC members for the project.

Capurso asked Parry about the tribe's interest in the ECC. Parry said the tribe was in the process of buying land near the Bear River Massacre site, and is interested in developing geothermal energy, etc. in the area. He stated that the Northern Shoshone were interested in the Bear River in general.

Bosen and Parry left the meeting.

ECC members decided to extend the review period for the memo to FERC regarding the Bear River Narrows project. It was suggested that the following disclaimer be added to the memo:

"The ECC members' positions reflected in this memo do not abrogate their specific responsibilities in meeting their statutory requirements and continuing to meet their permitting requirements as this process proceeds."

Garrett added this language to Marv Hoyt's draft memo and circulated it to ECC members by email for further comment. A vote on whether to send the memo to FERC will be taken at the May ECC meeting.

Proposed Land Purchase – Claudia Conder

Conder presented a series of draft maps for a possible land purchase in the project area. The ECC asked Conder to continue researching the land purchase. It was decided that this proposed purchase, should it go forward, would ultimately be presented to the Proposal Funding Subcommittee on a long form and be ranked along with other funding proposals.

Cove Removal Plan – Monte Garrett

Sediment Sampling

Garrett updated the ECC on the sediment sampling effort at Cove. He said the total sediment within the anticipated new channel behind Cove dam was estimated at 35,000 cubic yards, made up mostly of hard material (cobble, etc). He said that not a lot of sediment transport is expected during dam removal due to a proposed “decanting process” and physical removal of soft sediment. Once grading plan is complete, PacifiCorp will go on with the permitting process through Idaho Department of Environmental Quality (401 Certification). A discussion of proposed methods and IDEQ concerns followed. Greg Mladenka said IDEQ is concerned about the amount of fines contained in the sediment. He said PacifiCorp should specify how much of the 35,000 cubic yards of sediment is ooze (fines) and how much is harder material. Garrett said it appears that most of the sediment is made up of harder materials, which is encouraging. He noted that the final report is not complete, but will be soon.

Garrett reminded ECC members that preliminary drafts of the Removal Plan and Environmental Report for Cove were sent out some time ago. He asked ECC members to get any comments to him as soon as possible so that he can get them to the contractors working on these reports. The Removal Plan and Environmental Report will be appended to the Settlement Agreement for Cove.

Garrett said a review draft of the Settlement Agreement for Cove will be distributed to ECC members during the third week of May. He said he expects the Settlement Agreement to be finalized by late July. He noted that the next monitoring period in Black Canyon is October, and that the license application to the FERC should be completed well before that date in order to provide reduced flows for the Black Canyon Monitoring Plan’s time frame.

Black Canyon Monitoring Plan – Greg Mladenka

Mladenka updated ECC members on the status of the Black Canyon Monitoring Plan. He noted that edits to the BCMP were distributed to subcommittee members by email prior to this meeting, and that the BCMP subcommittee is still going with a “weight of evidence” approach. He said comments from another outside reviewer had been received, and he will revise the BCMP once more, distribute these changes to the subcommittee for a quick look, and then get a final BCMP to Garrett for development of an RFP for monitoring work.

In regards to timing, Garrett said the BCMP needs to go to FERC before the start of sampling. Mladenka and Tuescher agreed to revise the BCMP and circulate it to subcommittee once more, then forward to Susan Kammerdiener (SWCA) for completion. Mladenka estimated that this effort will take 2-3 weeks. Garrett said he will then draft a contractor work scope and prepare an RFP, which will take a month beyond when he receives the final plan. Based on this schedule, Garrett estimated that a contractor would be selected to conduct the monitoring work by midsummer.

Charlie Vincent expressed concern about rainbows being stocked in the Black Canyon. Teuscher said that Idaho Department of Fish and Game are stocking sterile rainbow. He noted that currently there are no Bonneville cutthroat trout in that area, and while it is IDFG's long-term goal to have BCT in the reach, they aren't there now. He said that in the short term, IDFG has chosen to plant rainbows rather than leave the habitat vacant. Teuscher said it makes sense to use rainbows as a surrogate for BCT, that is, to have trout of some type in the reach to see how they react to the whitewater flows.

Colyer asked that IDFG consider moving forward with the BCT broodstock program rather than falling back on hatchery rainbows for stocking efforts. Teuscher explained IDFG's stance on BCT, that increasing numbers of wild BCT were preferable to introducing hatchery BCT.

Sagebrush-Steppe Regional Land Trust – Tom Lucia/Joan Hansen

Lucia and Hansen, representatives of the Sagebrush-Steppe Land Trust were introduced to the ECC. The role of the land trust would be to provide oversight and stewardship for lands acquired through the land and water acquisition program. Lucia discussed the organization's history and goals with the ECC. He said Sagebrush-Steppe is a new land trust organization covering seven southeastern counties in Idaho. The group was formed about a year ago, and incorporated in April. They are still in the initial stages of forming the trust. He distributed a brochure to ECC members (Attachment A-1 – Sagebrush-Steppe Regional Land Trust brochure). Mladenka asked what would happen should the trust fold. Lucia said Sagebrush-Steppe has an agreement in place with the Teton Land Trust, which has agreed to take over Sagebrush-Steppe's interests should that happen.

Grace Site Plan – Eve Davies

Davies updated ECC members on the Grace Site Plan. She distributed three maps based on aerial photos of the project area (Attachment A-2).

Davies asked ECC members for comments on the draft Grace Site Plan. She noted that details that will result from field work still needed to be added to the plan, and the draft plan will be complete by June ECC meeting with the exception of final property lines.

Mansfield and Sant parcel (see Attachment A-2) - Davies said cows have been removed from the Mansfield parcel, but weeds are a problem. She said fencing will be changed on the Sant parcel and grazing will continue on upland portions.

Cove Forebay West/Kackley Springs – Davies said cows have been removed from the Kackley Springs parcel, and work on weeds will go forward. She said she is open to ideas for other activities/opportunities on this parcel from the ECC. On the Cove Forebay parcel, PacifiCorp's holdings will be fenced to prevent trespass grazing and a gate will be installed on the road.

Cove Plant – Davies said grazing may be recommended on this parcel to continue lawn.

Davies noted that the draft Grace Site Plan will be finished in June, and this first site plan will set the stage for future site plans. Although the official review draft of this site plan will be distributed in June, Davies asked that ECC members let her know very soon if anything else needs to be addressed (especially on the ground).

May Agenda

The next ECC meeting will be held on May 18, 2005 at Grace, beginning at 9 a.m.

The following agenda items were proposed:

Recap/Review/Updates (15 min)
Funding proposals (4 hours)
Status of Cove/Sediment Sampling Results – 30 min
Environmental Report 1-2 hours
Vote on Twin Lakes memo – 30 min

Funding subcommittee- as soon as long forms are ready, distribute to the rest of the subcommittee. (Get them in by May 9)

Attachments A: Handouts

Attachment A-1 – Sagebrush-Steppe Land Trust brochure

Attachment A-2 – Aerial Photo Maps of 1) the Mansfield and Sant Parcel, 2) Cove Forebay West/Kackley Springs Parcel, and 3) Cove Plant Parcel. (For Grace Site Plan)

Sagebrush Steppe Regional Land Trust

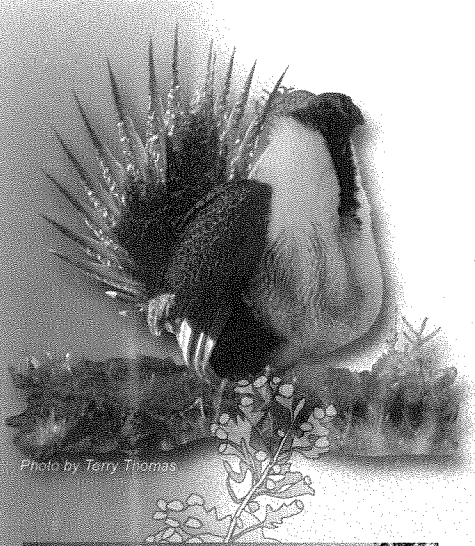


Photo by Terry Thomas

Many landowners and their families are discovering that protecting important wildlife habitat while maintaining traditional agricultural operations are complementary uses of the land.

What are conservation easements?

They are voluntary, legally recorded agreements between a property owner and a government agency or qualified conservation organization. When you own land you own many rights associated with it. When you donate or sell a conservation easement to a land trust, you permanently give up some rights, such as the right to develop. In some cases the easement applies to just a portion of the property.



Photo by Terry Thomas

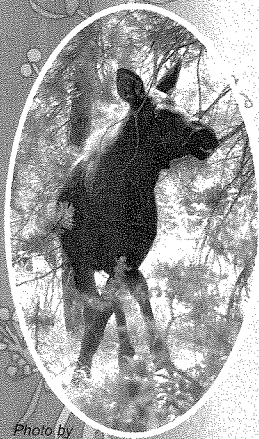


Photo by
Corey Glass

- ◆ Easements can significantly lower estate taxes, sometimes they can actually make the difference between heirs being able to keep land in the family.
- ◆ Easements can provide the landowner with income tax and sometimes property tax benefits.
- ◆ Easements sometimes provide cash payments to sellers, money which can be used for reinvestment on the land, building improvements, stock, new equipment, and debt reduction.
- ◆ Future owners are bound by the easement's terms.
- ◆ Conservation easements are flexible and allow for the landowner to live, sell, work, and pass the land on to their heirs, but the conservation easement restrictions remain with the land forever.

Mission Statement: The Sagebrush Steppe Regional Land Trust, Inc., is a nonprofit organization addressing the disappearance of wildlife habitat, scenic areas, and open spaces in southeastern Idaho. Our quality of life is dependent on the conservation and preservation of the natural and working lands in our region.



Photo by Mike Demick



Photo by Journal



Photo by Terry Thomas

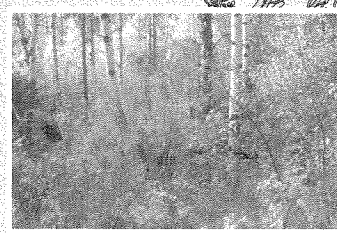


Photo by Terry Thomas



Sagebrush Steppe Regional Land Trust



Photo by Terry Thomas



Photo by Terry Thomas

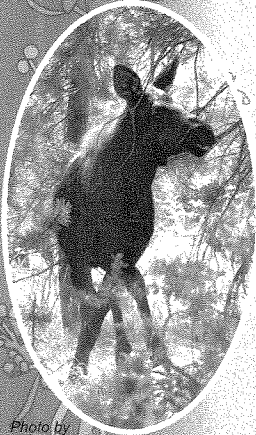


Photo by
Corey Claes



Photo by Mike Demick



Photo by Journal



Photo by Terry Thomas



Photo by Terry Thomas

Many landowners and their families are discovering that protecting important wildlife habitat while maintaining traditional agricultural operations are complementary uses of the land.

What are conservation easements?

They are voluntary, legally recorded agreements between a property owner and a government agency or qualified conservation organization. When you own land you own many rights associated with it. When you donate or sell a conservation easement to a land trust, you permanently give up some rights, such as the right to develop. In some cases the easement applies to just a portion of the property.

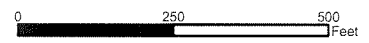
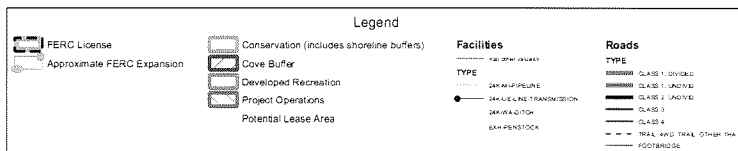
- ◆ Easements can significantly lower estate taxes, sometimes they can actually make the difference between heirs being able to keep land in the family.
- ◆ Easements can provide the landowner with income tax and sometimes property tax benefits.
- ◆ Easements sometimes provide cash payments to sellers, money which can be used for reinvestment on the land, building improvements, stock, new equipment, and debt reduction.
- ◆ Future owners are bound by the easement's terms.
- ◆ Conservation easements are flexible and allow for the landowner to live, sell, work, and pass the land on to their heirs, but the conservation easement restrictions remain with the land forever.

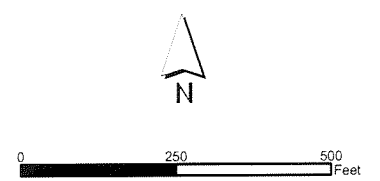
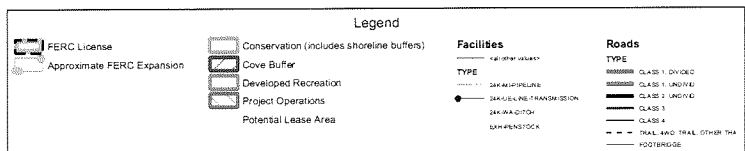
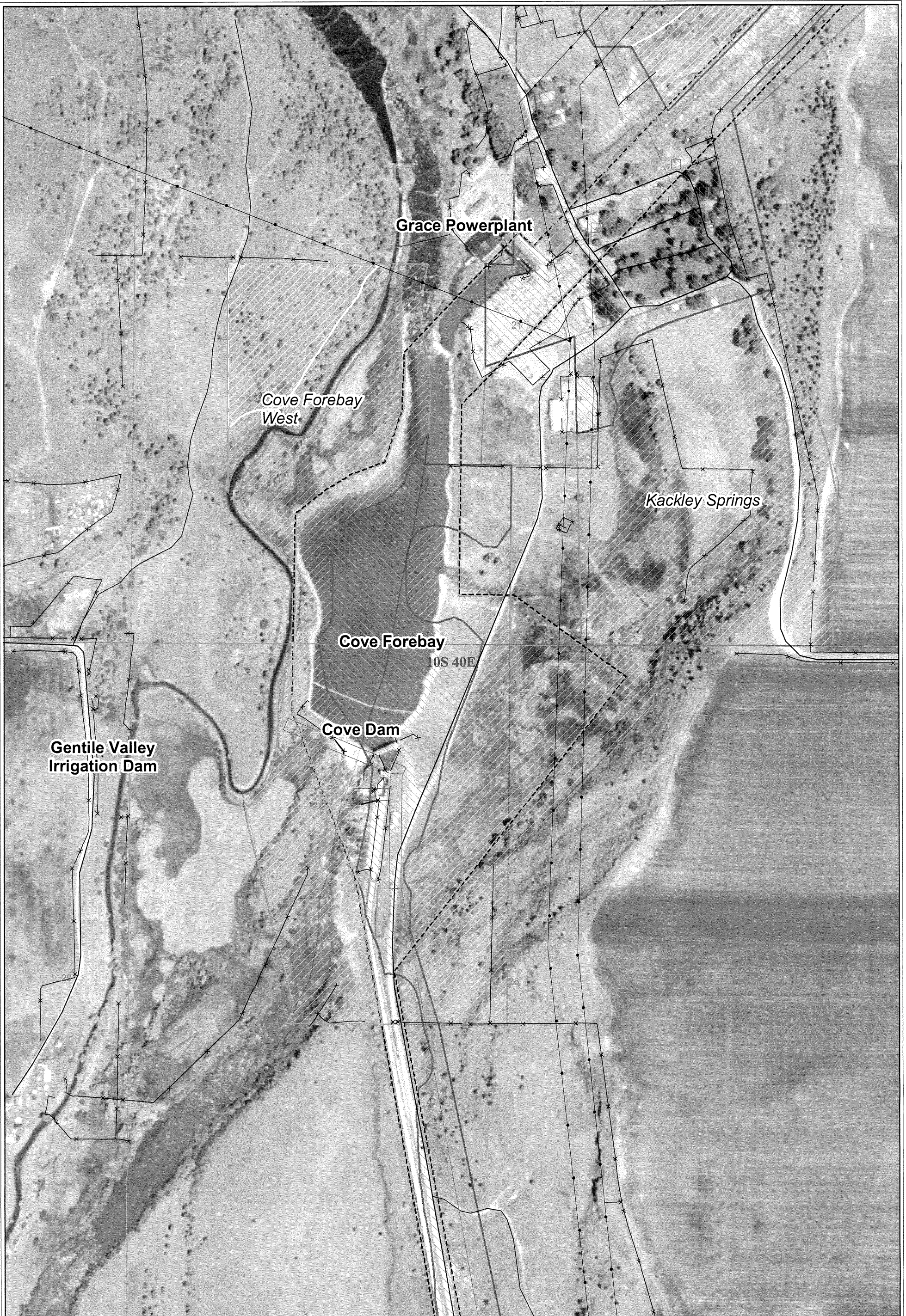
Mission Statement: The Sagebrush Steppe Regional Land Trust, Inc., is a nonprofit organization addressing the disappearance of wildlife habitat, scenic areas, and open spaces in southeastern Idaho. Our quality of life is dependent on the conservation and preservation of the natural and working lands in our region.





Data is projected in UTM Zone 12, units meters, NAD83.
PacificCorp GIS collects data from a variety of government and private sources. PacificCorp makes no warranty as to the accuracy, reliability, or completeness of this data for individual or aggregate use with other data. For complete validation, the source organization should be contacted to verify the findings of this product.





Data is projected in UTM Zone 12, units meters, NAD83.
 PacificCorp GIS collects data from a variety of government and private sources. PacificCorp makes no warranty as to the accuracy, reliability, or completeness of this data for individual or aggregate use with other data. For complete validation, the source organization should be contacted to verify the findings of this product.
 4/18/05 S:\Property_Management\GIS\Geodatabase\MXD\Clients\MonteGarrett\04-193\EveDavies_GraceCove_Sheets.mxd

