

Bear River Bonneville Cutthroat Broodstock Program

Broodstock / Conservation Hatchery Program

- Funded by PacifiCorp Energy through hydro licensing commitments – 30 year commitment.
- Implemented by IDFG.

Bear River Bonneville Cutthroat Trout Genetic Study

- Funded by PacifiCorp Energy.
- Completed prior to start of Broodstock program.
- Identified several clades of fish that will be managed separately – one broodstock cannot be used for all of the Bear River.
- Thatcher Reach of the Bear River was identified for first efforts.
 - Completed habitat projects have created improved conditions for increasing population numbers.

Program Goals

- Release fish in streams that have sufficient habitat to reproduce naturally.
- Once success is documented in the Thatcher Reach expand the program to other reaches of the Bear River.
 - Nounan Reach (above Alexander Reservoir) is likely the next.
- Avoid domestication of broodstock.
 - Domesticated vs. Captive.

Collection of wild fish for Broodstock

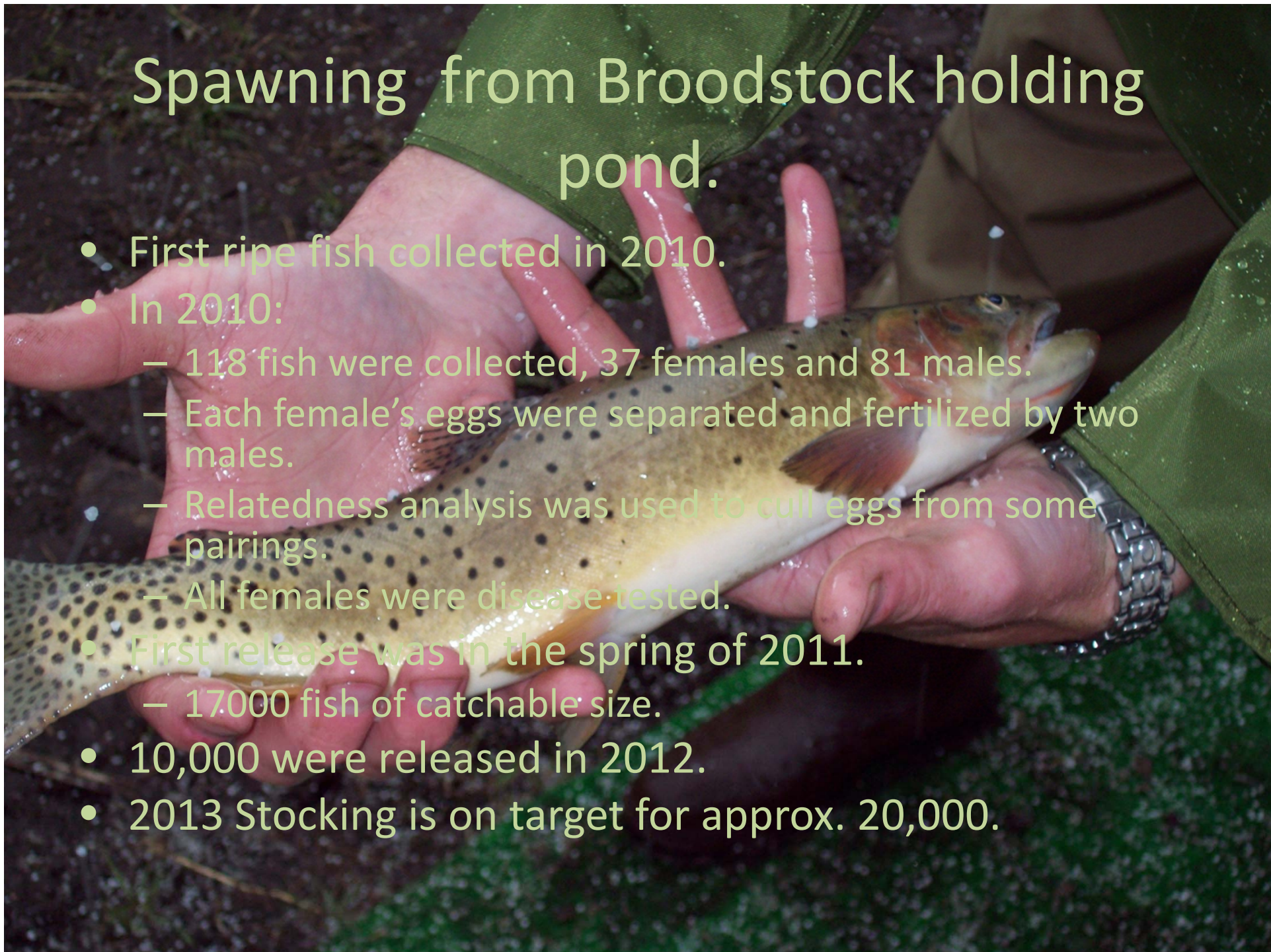
- Collection of fish began in 2007.
- 686 fish collected from Cottonwood Creek and its tributaries.
- Fish that passed genetic tests were moved to brood pond.
 - Those classified as hybrids were culled.
 - Relatedness analysis was also completed.
 - All fish were tagged.

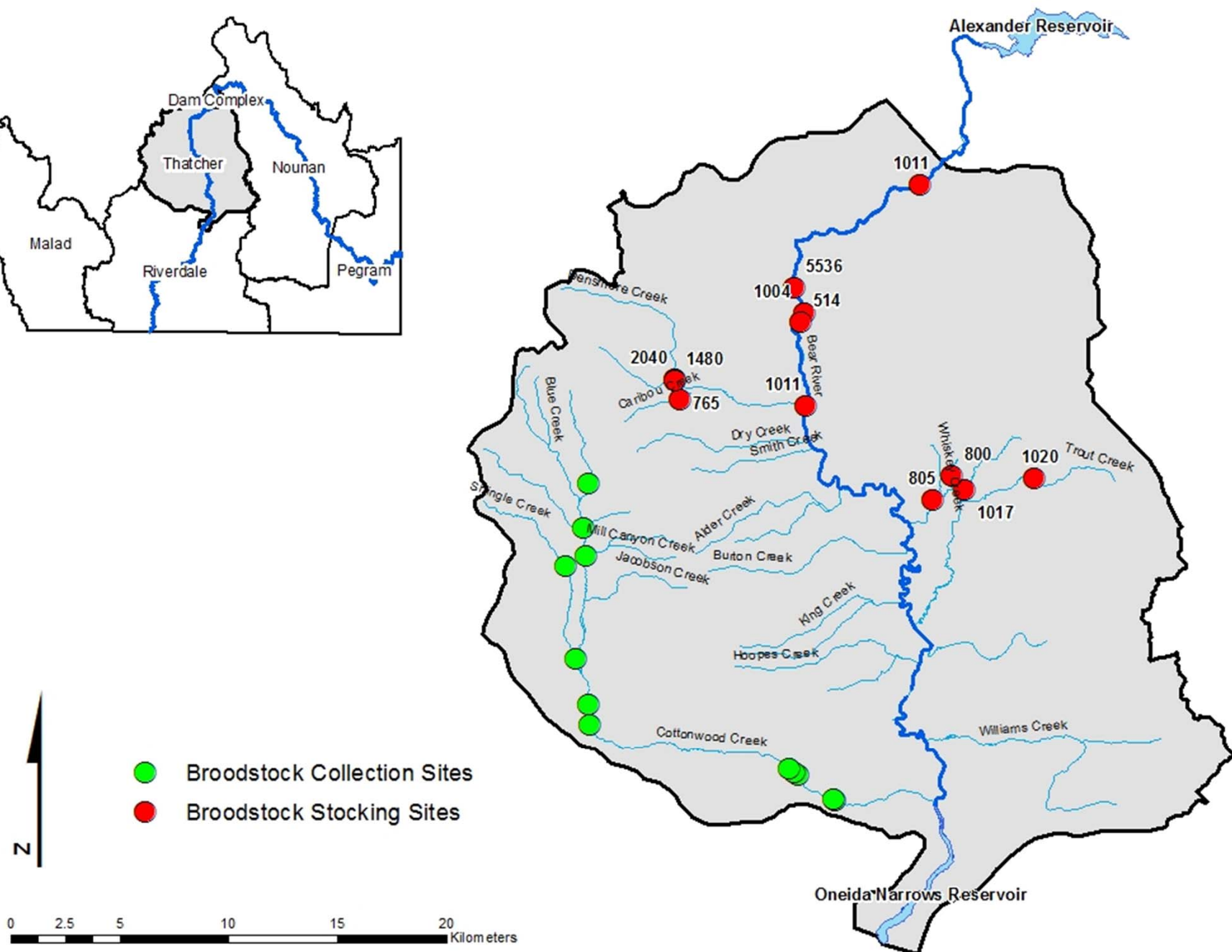
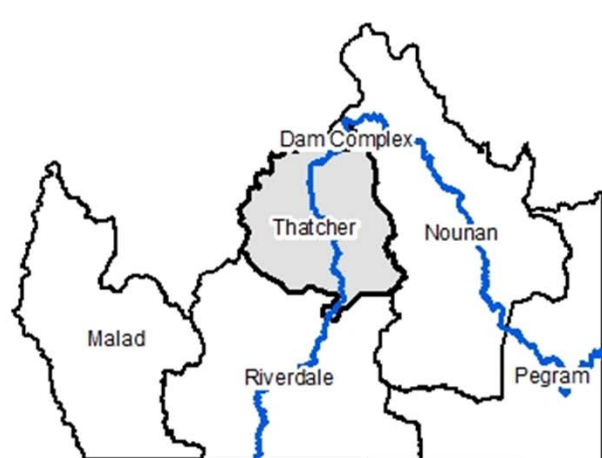




Spawning from Broodstock holding pond.

- First ripe fish collected in 2010.
- In 2010:
 - 118 fish were collected, 37 females and 81 males.
 - Each female's eggs were separated and fertilized by two males.
 - Relatedness analysis was used to cull eggs from some pairings.
 - All females were disease tested.
- First release was in the spring of 2011.
 - 17000 fish of catchable size.
- 10,000 were released in 2012.
- 2013 Stocking is on target for approx. 20,000.







BCT Disease Sampling Protocol

FEMALES

- Vital: Kidney and Spleen, pinch kidney size, combine in 10ml tube
- ELISA: Kidney, pinch kidney, pinch spleen, combine in 10ml tube
- Ovarian: At least 1 ml, in separate tube. Spray 1 ml. to 10 ml. tube. Spike with
- Genetic: Caudal fin, strip scale, attach tube
- Remove head and put in 10ml tube

MALES

- Vital: Kidney and Spleen, pinch kidney size, combine in 10ml tube
- Genetic: Caudal fin, strip scale, attach tube
- Remove head and put in 10ml tube

Female Ovary Buttons and Buttons from at least 10 Health Lab to notify them when shipping mail













Releasing fish into Kackley Springs in 2011



Non-native stocking was discontinued
by IDFG in the Thatcher Reach in 2012

