A blue silhouette of a sagebrush branch with small flowers and leaves, positioned to the left of the main title.

Sagebrush

Steppe Land Trust

For Generations To Come

Our mission is to protect, connect, and enhance wildlife habitat, working farms and ranches, and community spaces, now and for future generations.

Sagebrush Steppe Land Trust

- Organized in 2004 to serve 7 counties in SE Idaho (6,000,000 ac)
- Half of Service Area is public and half private
- Private land is the key to habitat connectivity
- Most easements are bargain sale purchases
- Growing landowner interest
- 1/3 of SSLT Service Area is within the Idaho portion of the Bear River Watershed



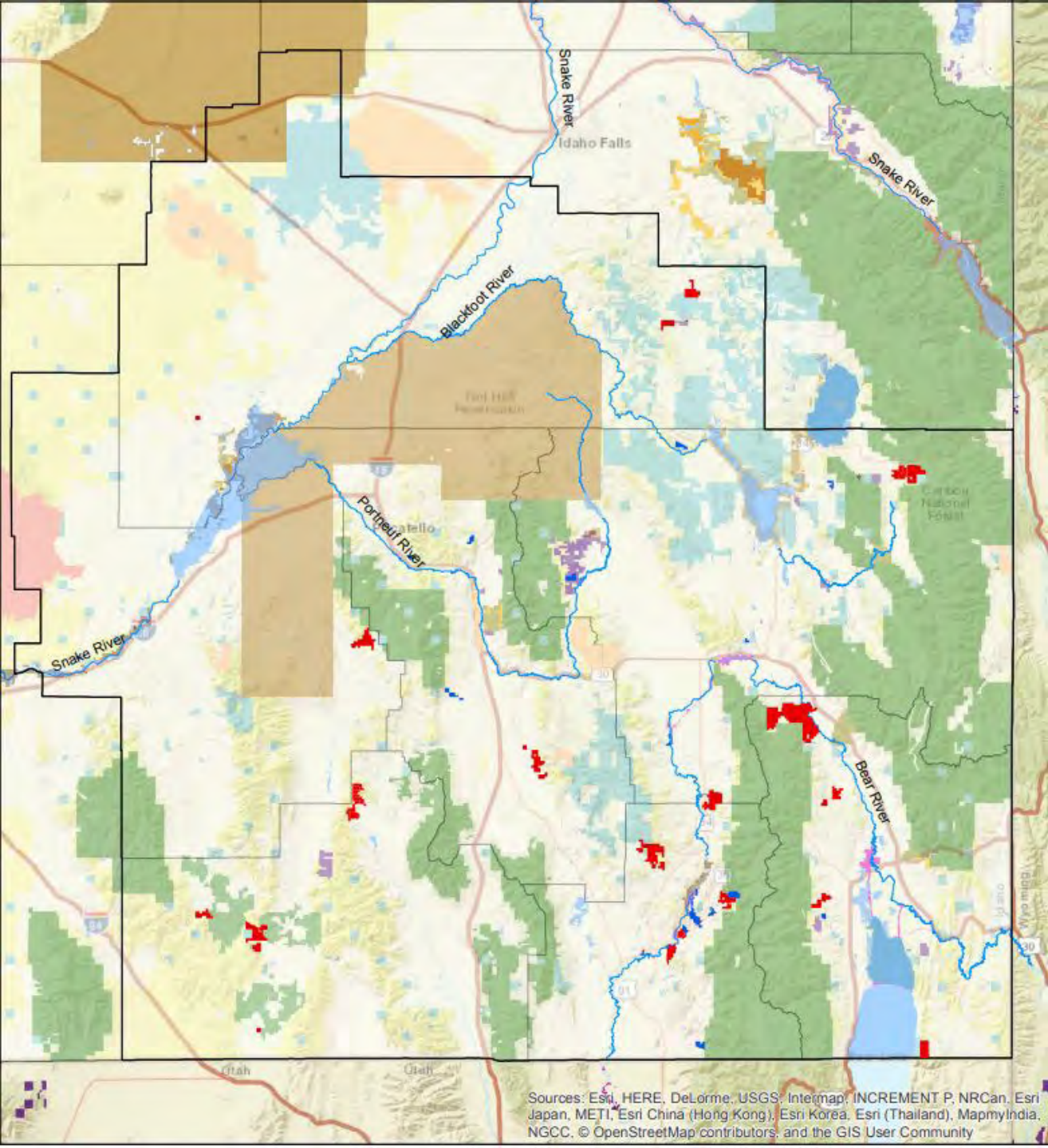
Sources: Esri, HERE, DeLorme, USGS, Intermap, INCREMENT P, NRCan, Esri Japan, METI, Esri China (Hong Kong), Esri Korea, Esri (Thailand), MapmyIndia, NGCC, © OpenStreetMap contributors, and the GIS User Community

Sagebrush Steppe Land Trust's service area covers 7 counties in Southeastern Idaho (Bannock, Bear Lake, Bingham, Caribou, Franklin, Oneida and Power). It is a 6 million-acre landscape composed of basin and range topography which supports an agricultural-based economy, high biological diversity and exceptional wildlife habitat. Livestock grazing, outdoor recreation and mining are the principle land uses on public land while agriculture typically dominates the productive valleys at lower elevations on private lands. Sagebrush-steppe is the dominate habitat type in our service area.

Map Created July 2018

Ownership Patterns

- Private Lands
 - Productive soil
 - Live water, riparian and wetland habitat
 - Winter range
- Ecological connectors between ecosystems
- BRW is a focal watershed for SSLT



Sources: Esri, HERE, DeLorme, USGS, Intermap, INCREMENT P, NRCan, Esri Japan, METI, Esri China (Hong Kong), Esri Korea, Esri (Thailand), MapmyIndia, NGCC, © OpenStreetMap contributors, and the GIS User Community

Legend

 Potential Projects	 PacifiCorp_adjusted	 BLM	 NWR
 SSLT Service Area	 WMA	 BOR	 BIA
 SSLT Properties	 WSA/ACEC	 DOE	 PRIVATE
 Other conservation easements		 IR	 STATE
		 USFS	





ECC/SSLT Partnership

- ◆ **Perpetual Habitat Protection:** 4,262.4 Acres (16 CE & 5 FT transactions)
- ◆ **CE Protection:** 3,645.5 Acres
- ◆ **Fair Market Value:** \$10,946,160
- ◆ **Conservation Easement Value:** \$ 5,044,284
- ◆ **Bargain Sale Purchase Price:** \$ 3,755,550

Egley Funding Example

B&R Funding Example

Total Project Costs: \$743,187

ECC: \$625,657

Landowner: \$ 63,980

SSLT/Grants: \$ 53,550

Total Project Costs: \$1,405,550

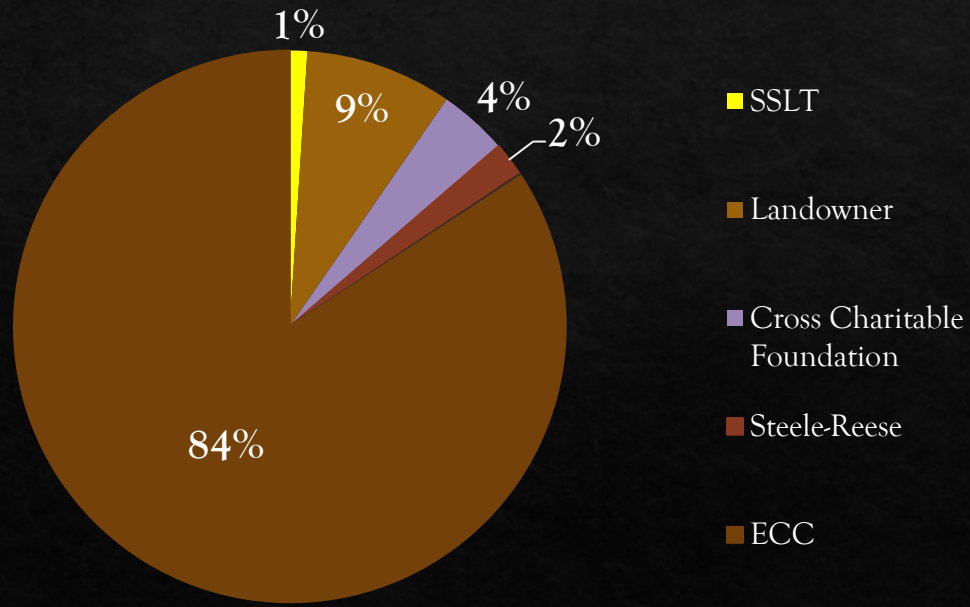
ECC: \$ 680,128

NRCS: \$ 602,100

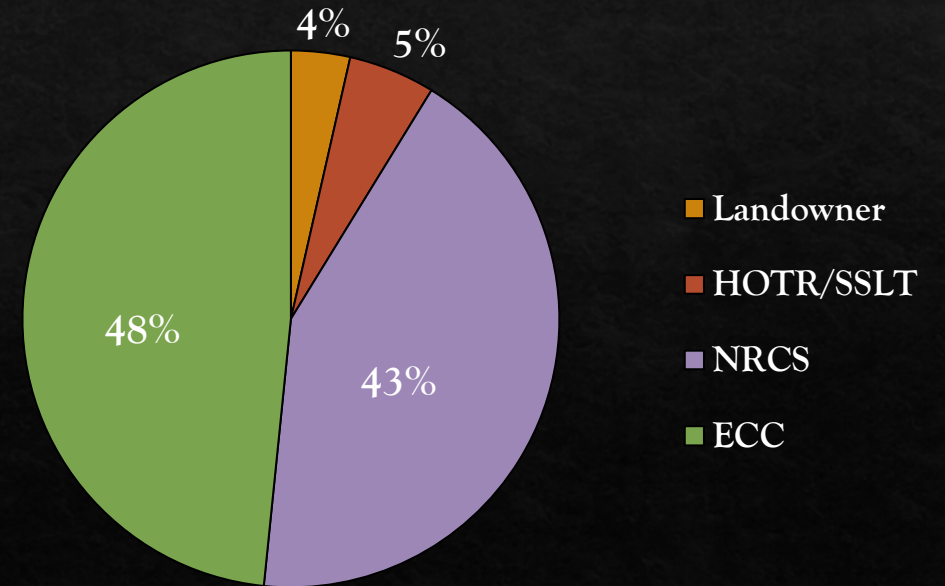
SSLT/HOTR: \$ 73,371

Landowner: \$ 49,950

Egley Project Partnership Funding

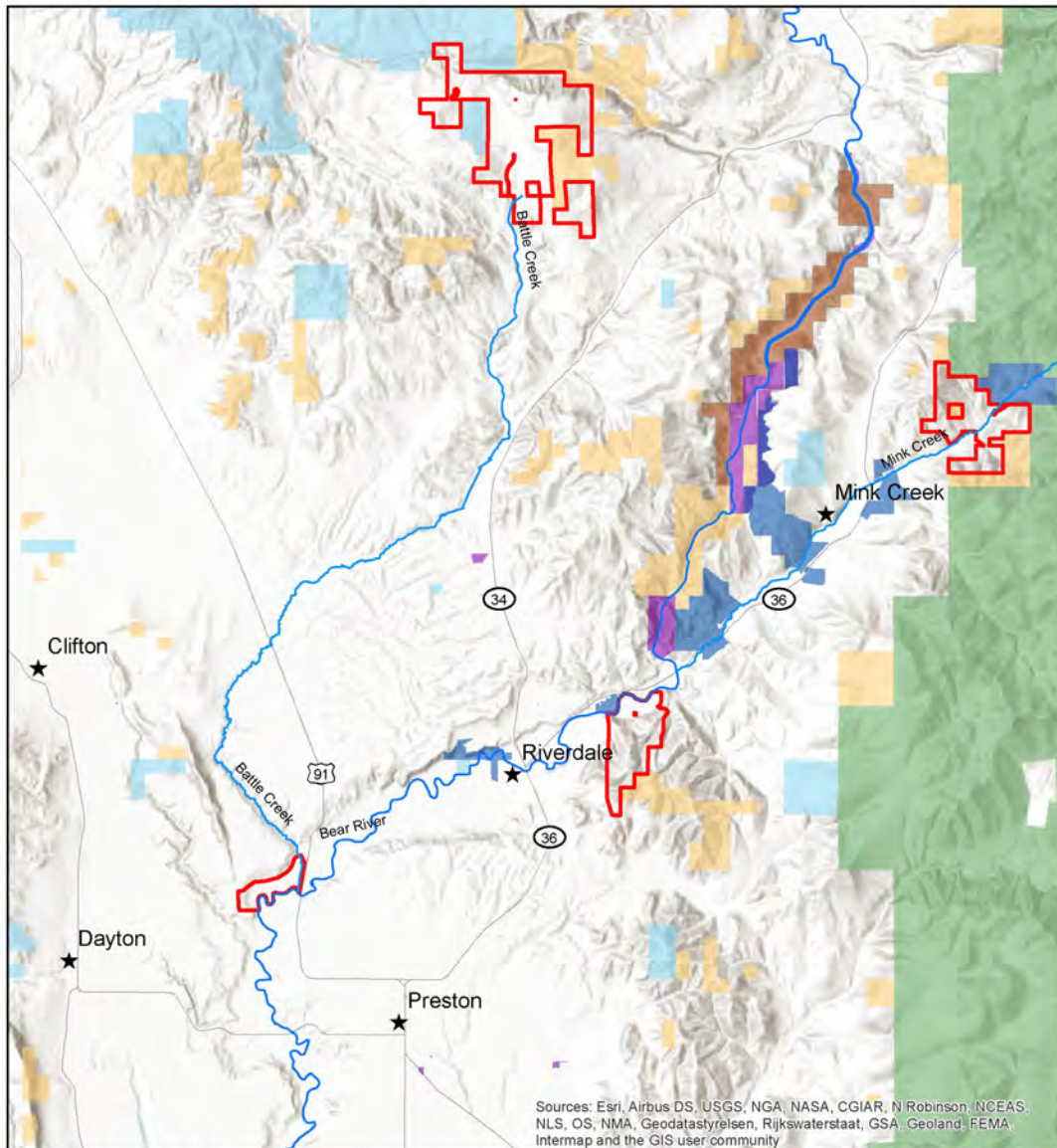


Christensen B&R Ranch Partnership Funding

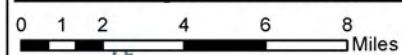


Vision

- Continue collaborative, adaptive, & strategic approaches for habitat connectivity through private land conservation
- SSLT bring more match funding
 - NRCS - RCPPP (50%)
 - Landowners (25%)
 - ECC (25%)
 - Foundations & grants to cover transaction costs (\$150k/project)
- Broaden scope to include other conservation priority species (i.e., SGCN)
- Increase recreational access opportunities



Landscape Connectivity - KFF Tour

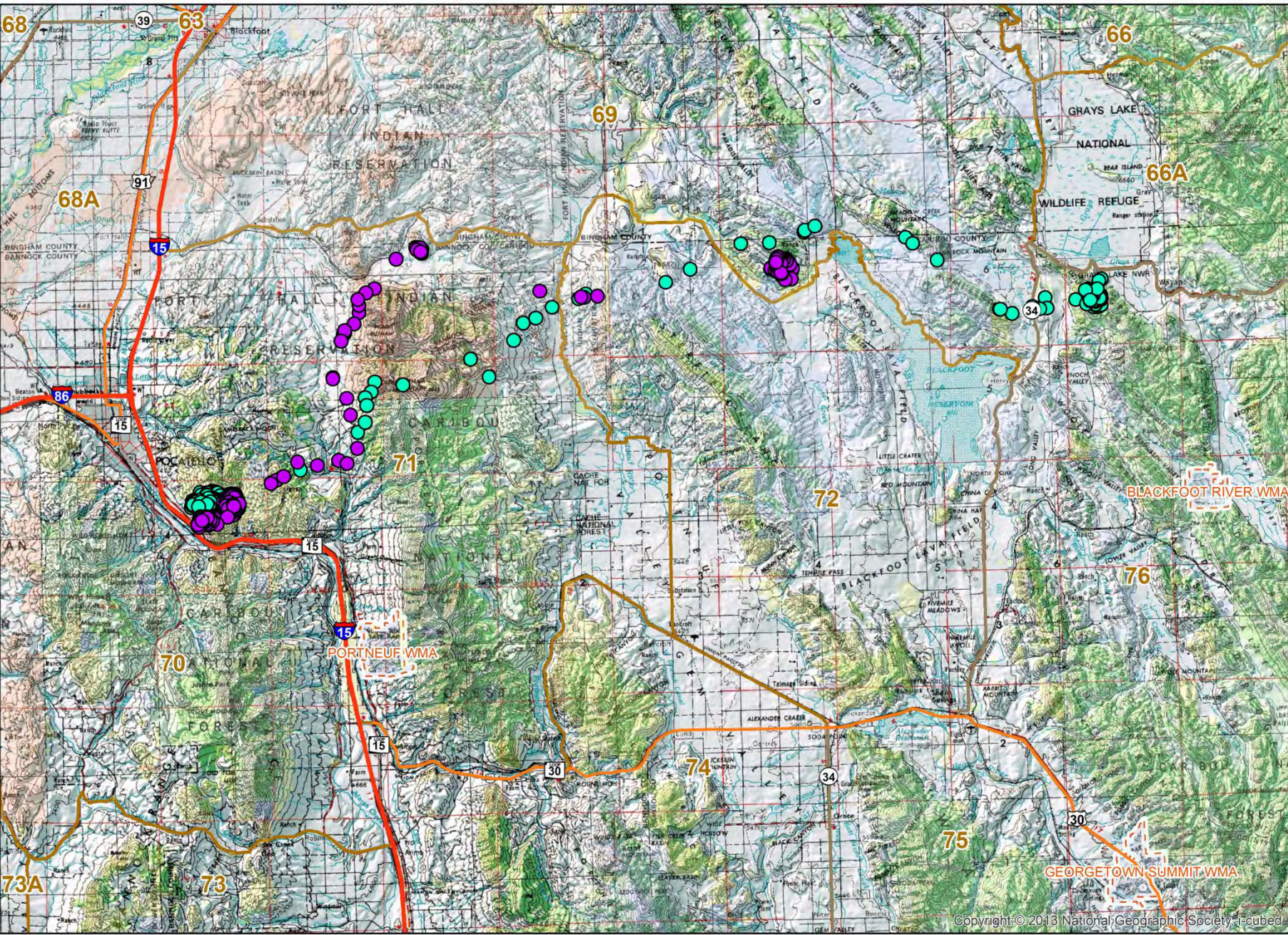


Sagebrush
Steppe Land Trust
For Generations To Come



Notes:
1. Map created by Heidi Albano April 2021
2. US Bureau of Land Management 2018 data
3. Boundaries created for display purposes only and should not be substituted for a legal survey

Mule Deer Migration



Mule Deer Migration

