

Bear River Hydroelectric Project

Recreational Use
(2014 and 2023)



Recreation Facilities

*traffic monitoring locations in 2014 and 2023

- Soda

- Oregon Trail Park and Marina*
- Second Bridge Boat Launch*
- Soda Powerhouse Day Use Area*

- Grace

- Black Canyon Boater Put-In*
- Black Canyon Boater Take-Out*
- Cove Road (fishing access)*

- Oneida

- Maple Grove Campground (BLM)*
- Day Use Area
- Narrows Put-In
- Redpoint Campground (BLM)
- Oneida Narrows Take-Out*

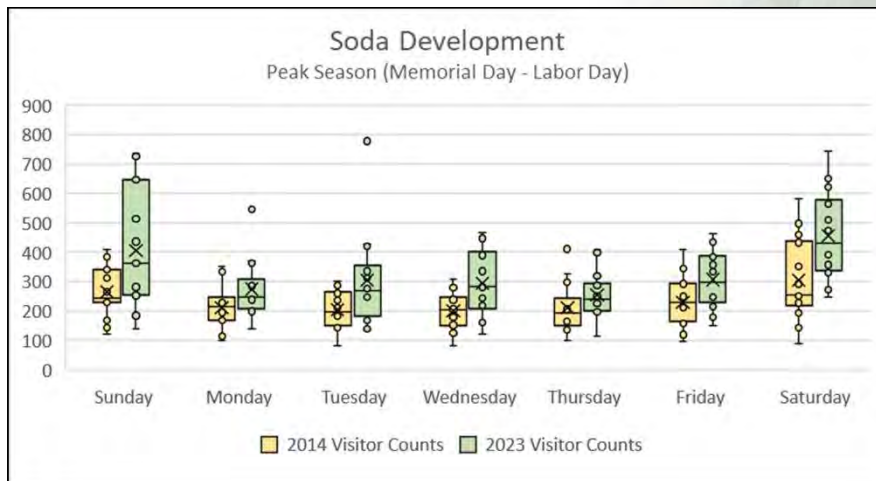
Monitoring

- Vehicle traffic recorded at access points to each facility during peak season
 - TRAFx Vehicle Counter
 - Peak Season (Friday before Memorial Day through Labor Day)
- Adjust total vehicle count
 - Subtract PacifiCorp personnel traffic
 - Divided by 2 (enter/exit)
- Total visitors = 2.7 persons/car x adjusted vehicle count
 - National Park Service data



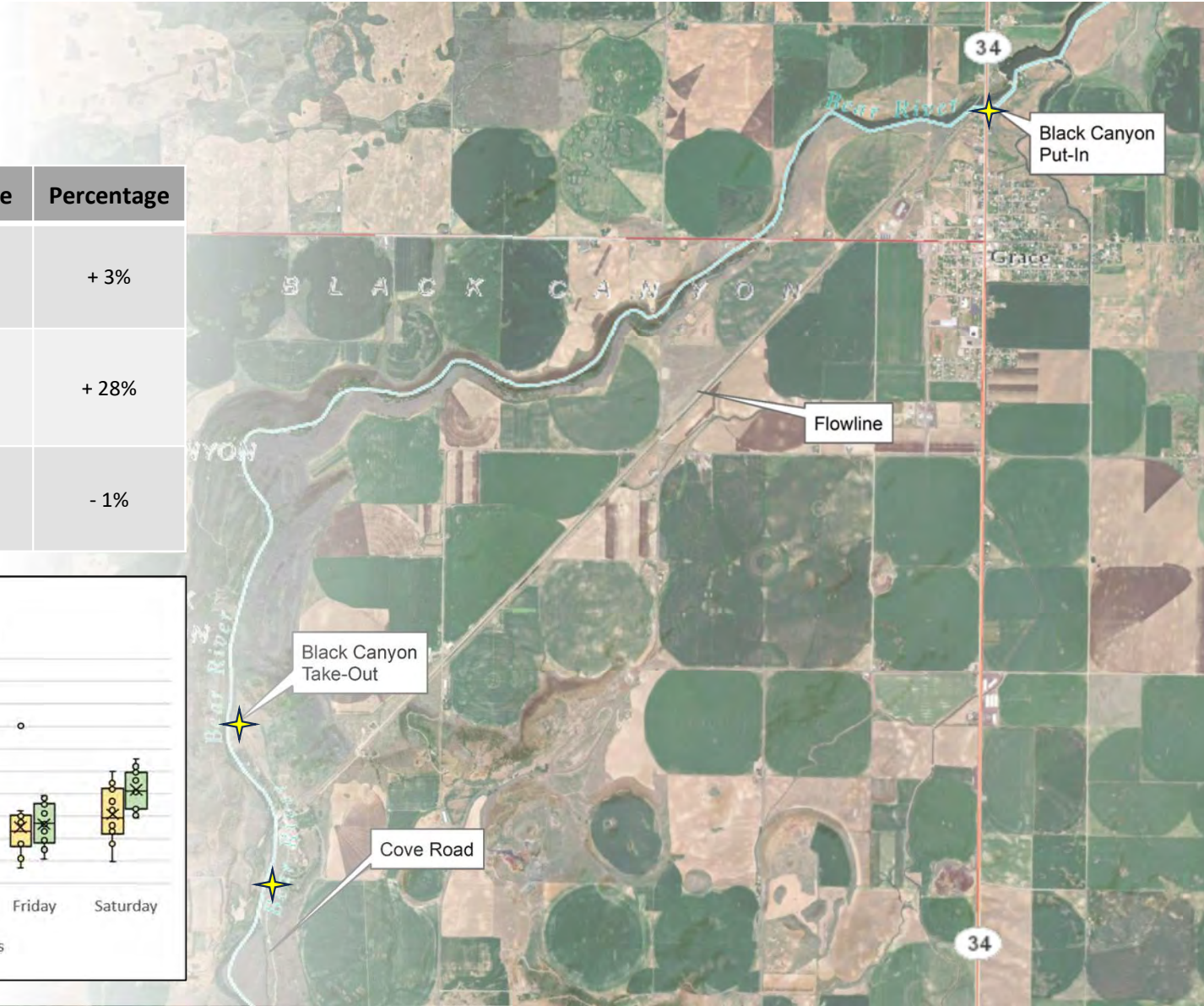
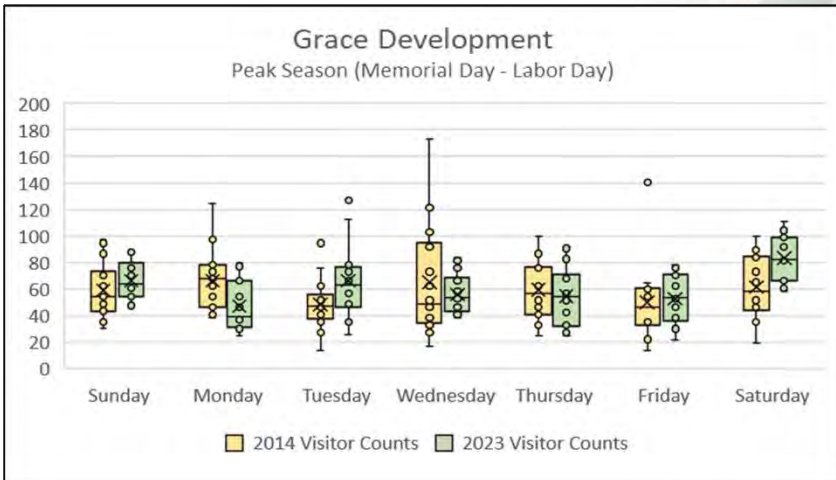
Soda

	2014	2023	Difference	Percentage
Peak Season Visitors	23,639	33,145	9,507	+ 40%
Weekend Average (Non-Holiday)	559	855	296	+ 53%
Weekend Average (Holiday)	878	1,202	324	+ 37%



Grace

	2014	2023	Difference	Percentage
Peak Season Visitors	5,989	6,192	204	+ 3%
Weekend Average (Non-Holiday)	115	147	33	+ 28%
Weekend Average (Holiday)	215	213	-2	- 1%



Oneida

	2014	2023	Difference	Percentage
Peak Season Visitors	43,443	37,264	- 6,179	- 14%
Weekend Average (Non-Holiday)	1,398	1,234	- 164	- 12%
Weekend Average (Holiday)	2,236	1,446	- 790	- 35%

