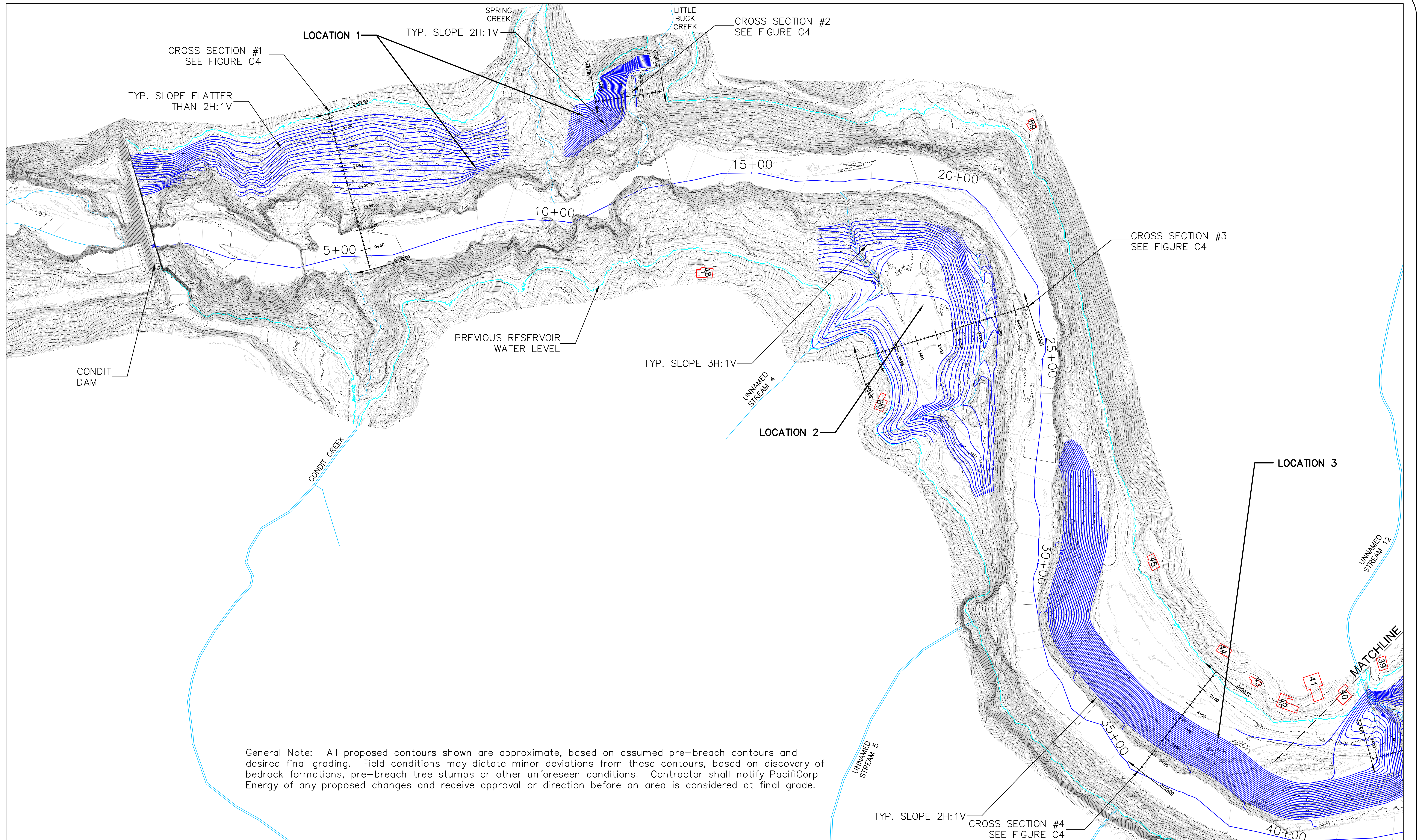
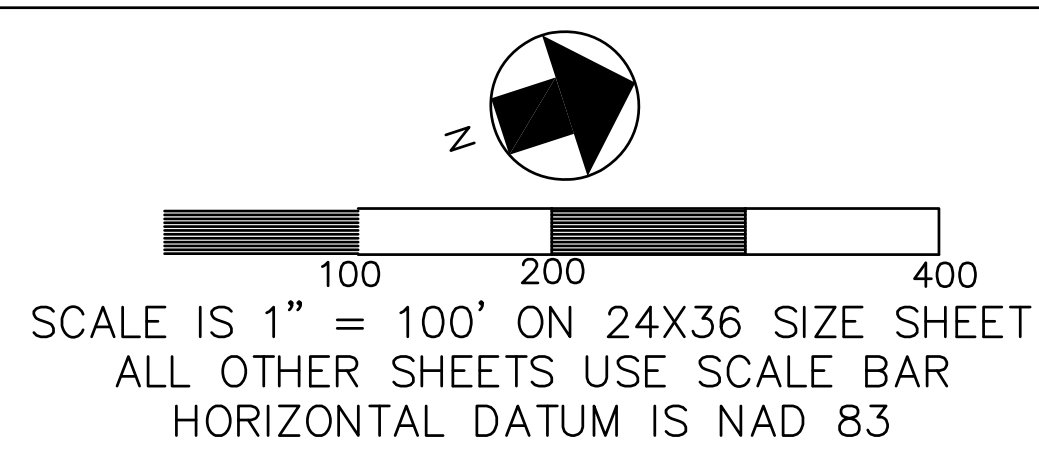


APPENDIX C



- # EXISTING CABINS
- 12.21.2011 LIDAR CONTOURS (1 FT CONTOUR INTERVALS)
- PROPOSED CONTOURS (2 FT. CONTOUR INTERVALS)



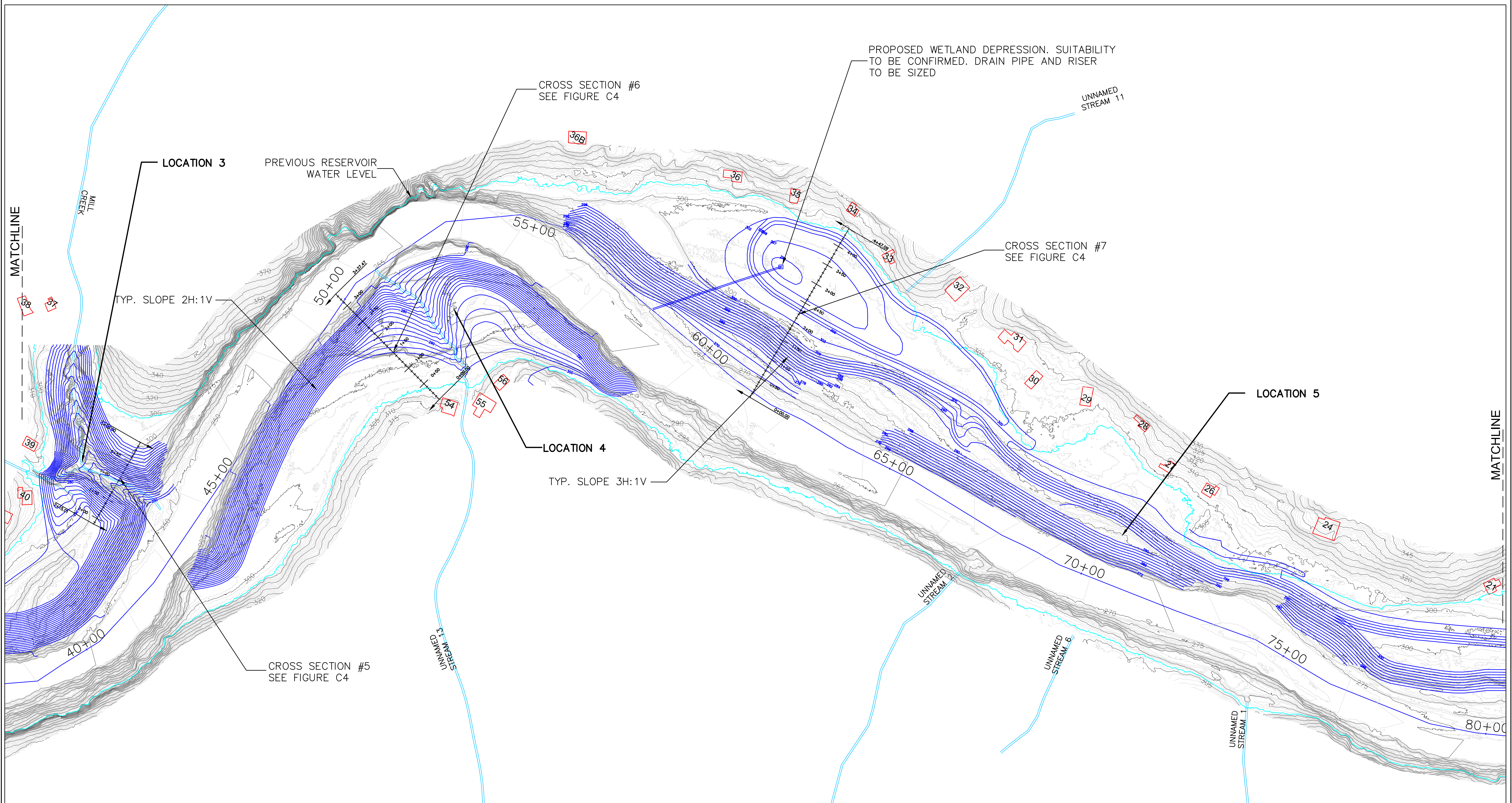
JR MERIT
INDUSTRIAL CONTRACTORS

PACIFICORP ENERGY
A DIVISION OF PACIFICORP

RIVERBEND ENGINEERING, LLC

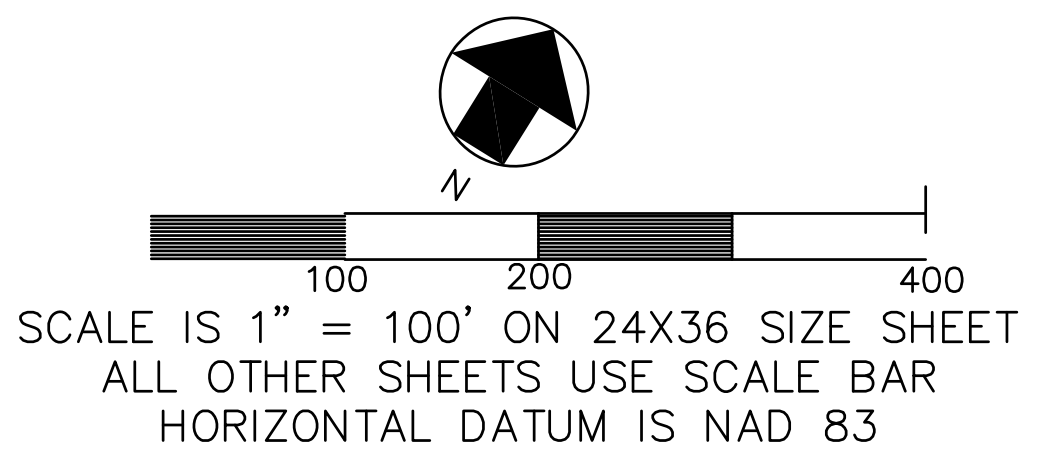
102 3rd Street Pagosa Springs, CO 81147
Tel: 970.264.1195 FAX: 970.264.1196
www.riverrestoration.com

| | |
|----------------------------|-----------|
| CONDIT DAM DECOMMISSIONING | |
| FIGURE C1 | |
| PROPOSED GRADING PLAN | |
| SOUTH SECTION | |
| Scale: 1" = 100 ft | 2/20/2012 |



General Note: All proposed contours shown are approximate, based on assumed pre-breach contours and desired final grading. Field conditions may dictate minor deviations from these contours, based on discovery of bedrock formations, pre-breach tree stumps or other unforeseen conditions. Contractor shall notify PacifiCorp Energy of any proposed changes and receive approval or direction before an area is considered at final grade.

- # EXISTING CABINS
- 12.21.2011 LIDAR CONTOURS (1 FT CONTOUR INTERVALS)
- PROPOSED CONTOURS (2 FT. CONTOUR INTERVALS)



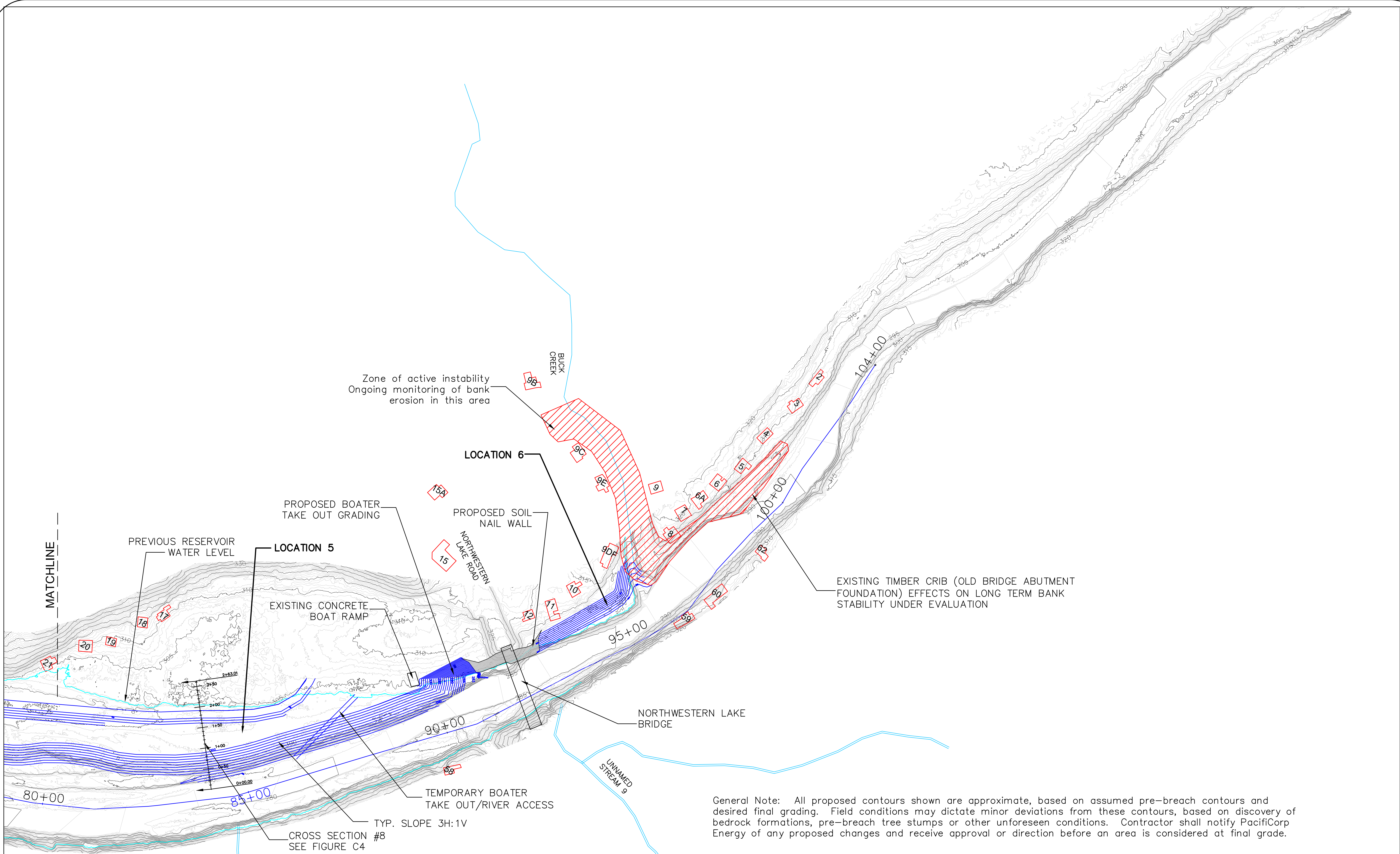
MERIT
INDUSTRIAL CONTRACTORS

PACIFICORP ENERGY
A DIVISION OF PACIFICORP

RIVERBEND ENGINEERING, LLC

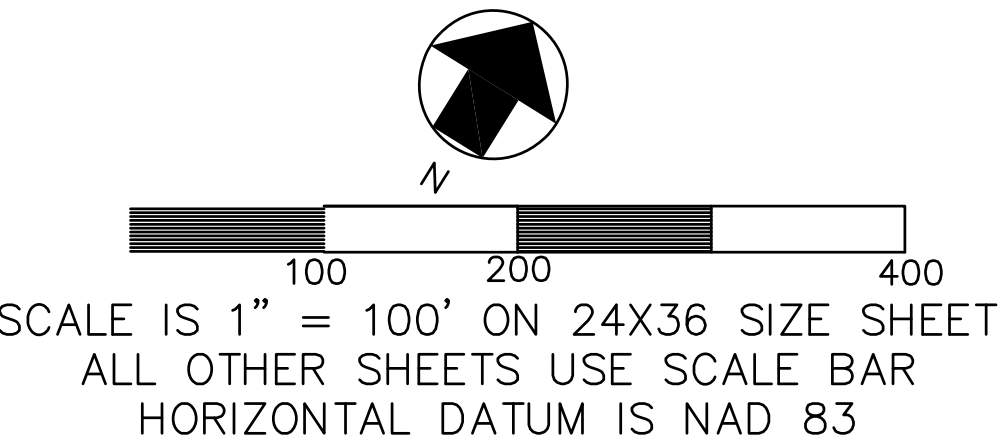
102 3rd Street Pagosa Springs, CO 81147
Tel: 970.264.1195 FAX: 970.264.1196
www.riverrestoration.com

| | |
|--------------------------------------------------------------|-----------|
| CONDIT DAM DECOMMISSIONING | |
| FIGURE C2 PROPOSED GRADING PLAN CENTRAL SECTION | |
| Scale: 1" = 100 ft | 2/20/2012 |



General Note: All proposed contours shown are approximate, based on assumed pre-breach contours and desired final grading. Field conditions may dictate minor deviations from these contours, based on discovery of bedrock formations, pre-breach tree stumps or other unforeseen conditions. Contractor shall notify PacifiCorp Energy of any proposed changes and receive approval or direction before an area is considered at final grade.

- # EXISTING CABINS
- 12.21.2011 LIDAR CONTOURS (1 FT CONTOUR INTERVALS)
- PROPOSED CONTOURS (2 FT. CONTOUR INTERVALS)



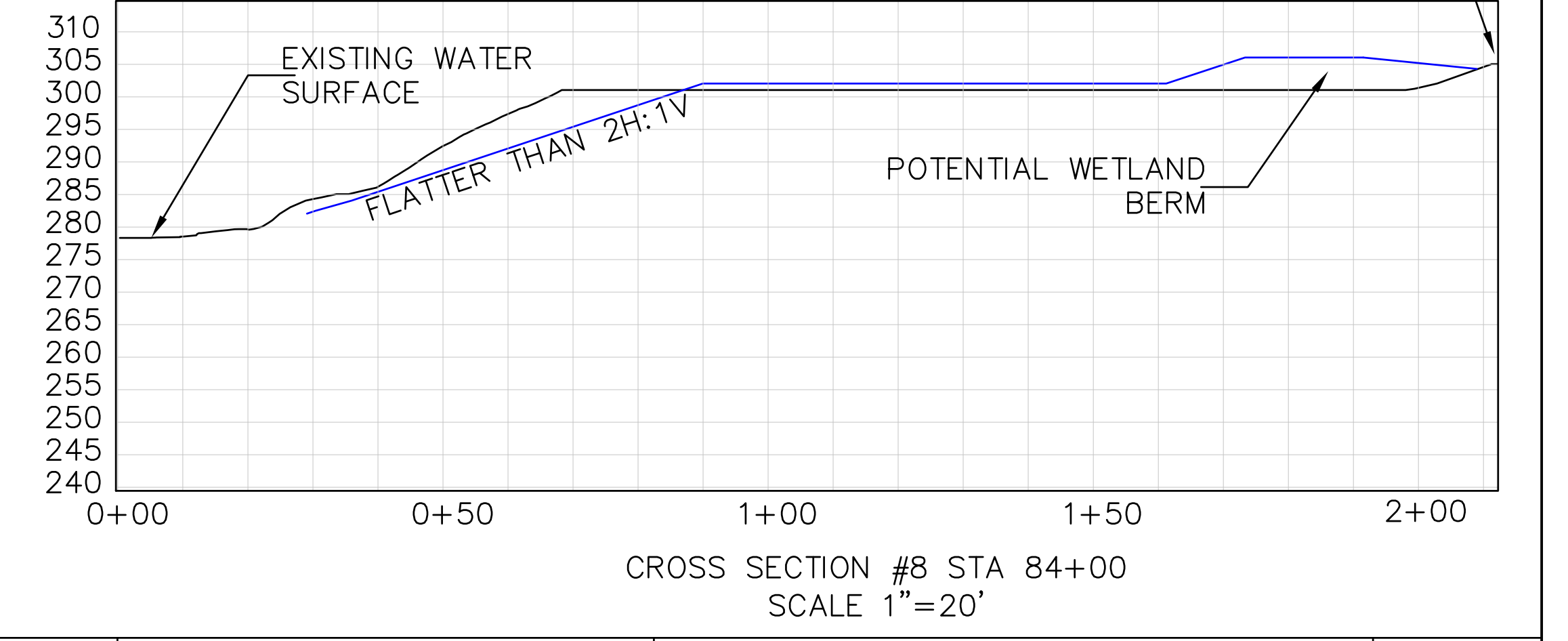
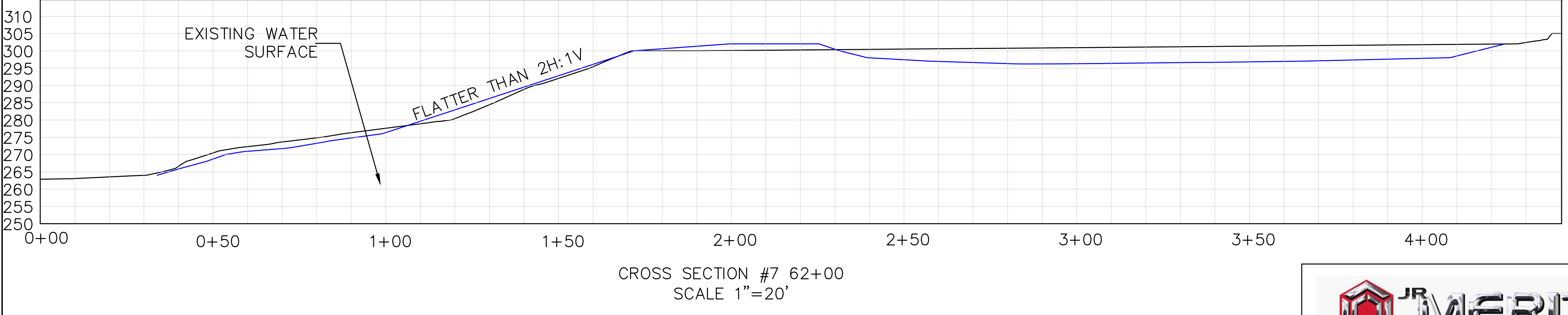
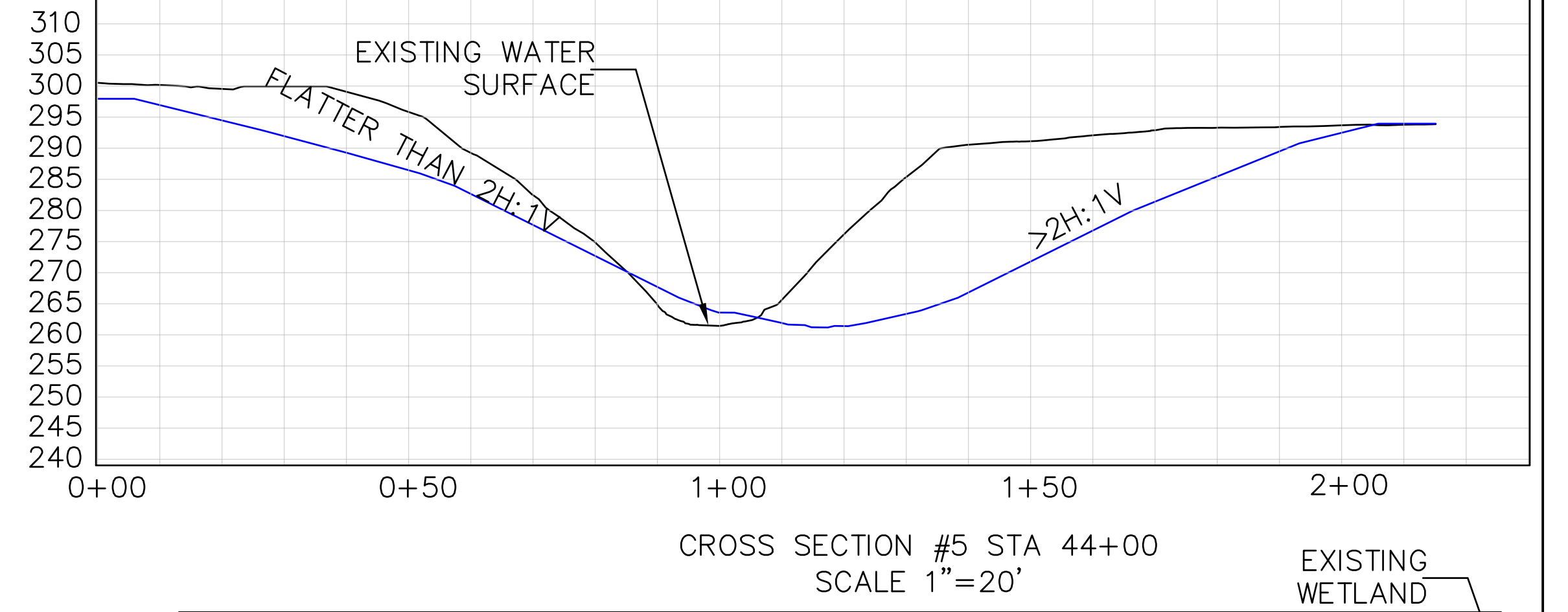
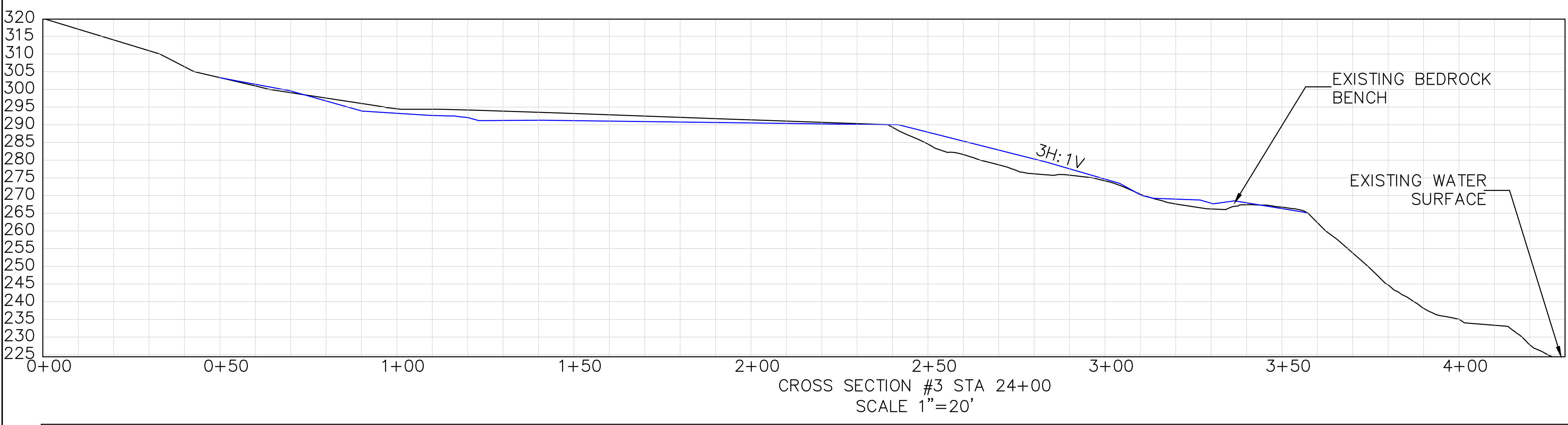
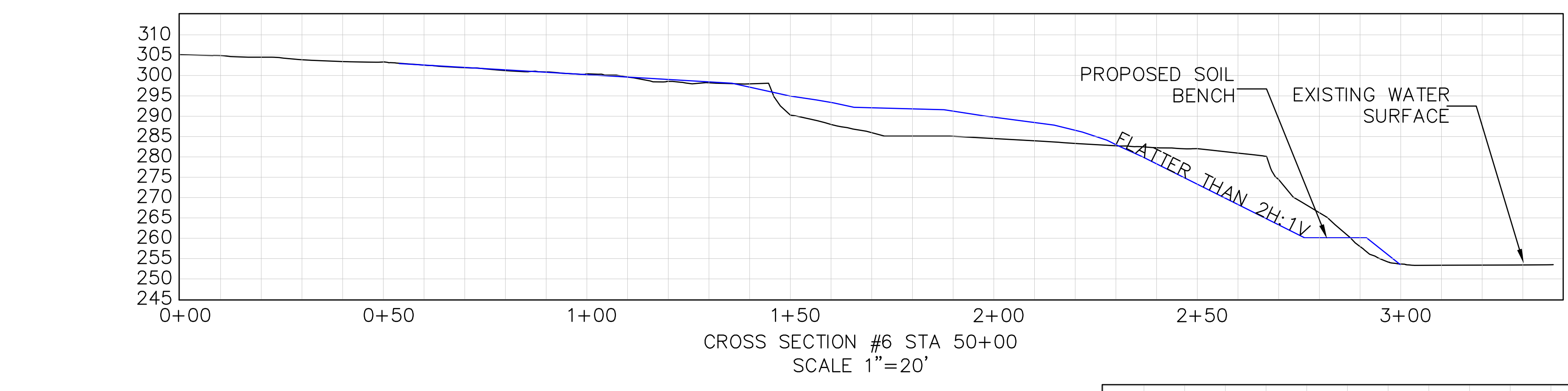
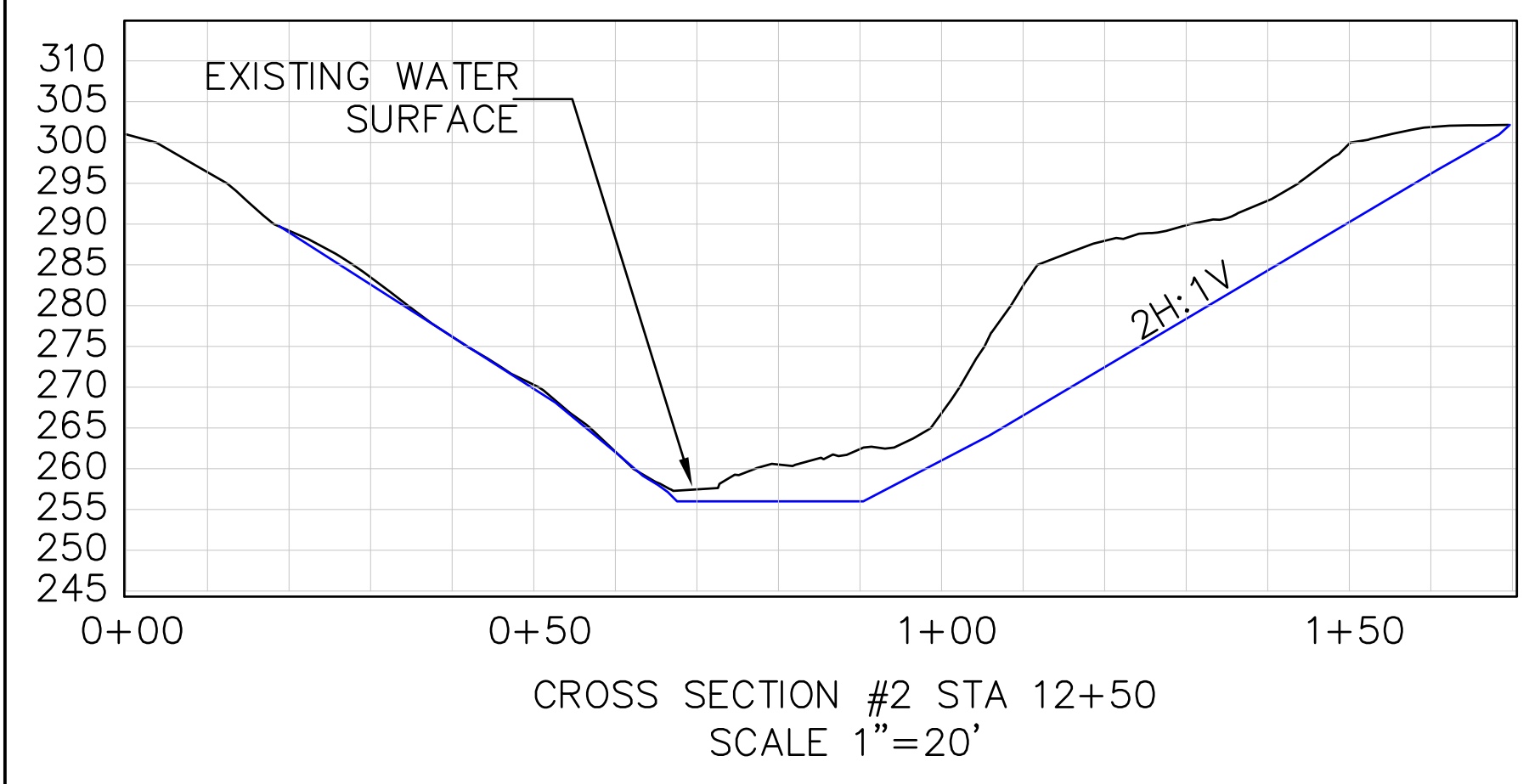
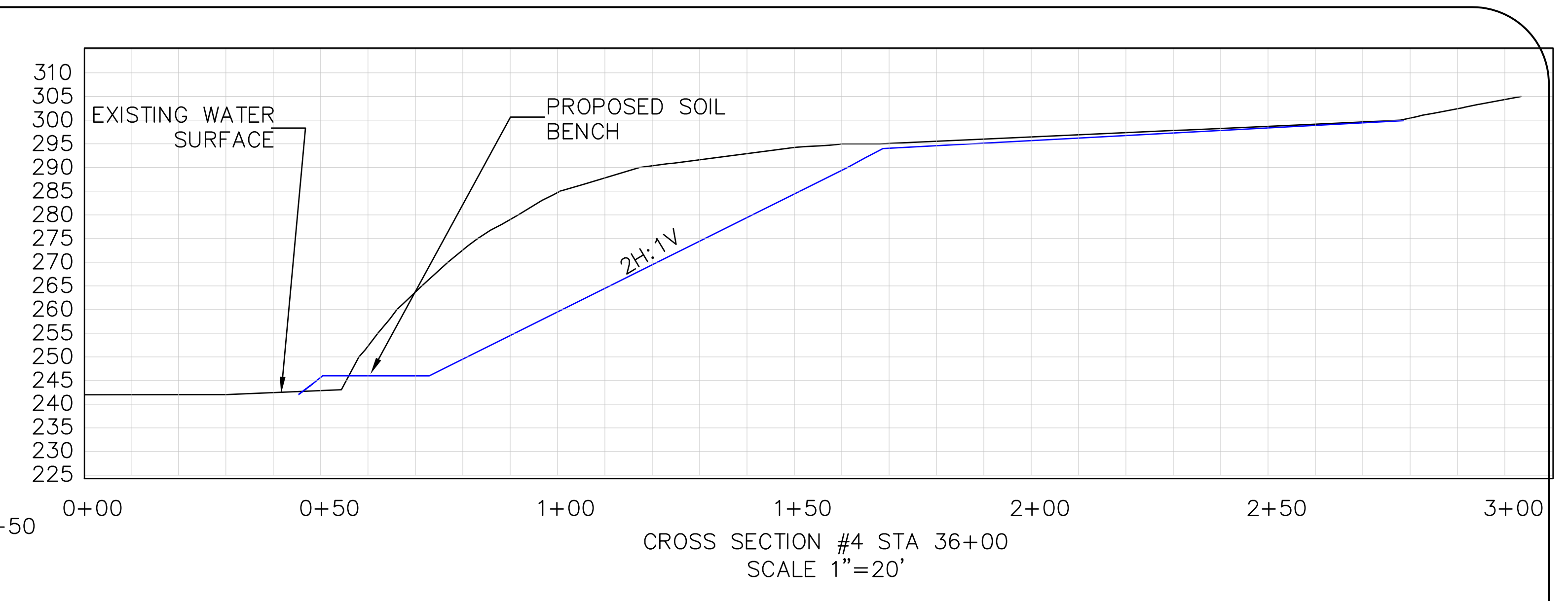
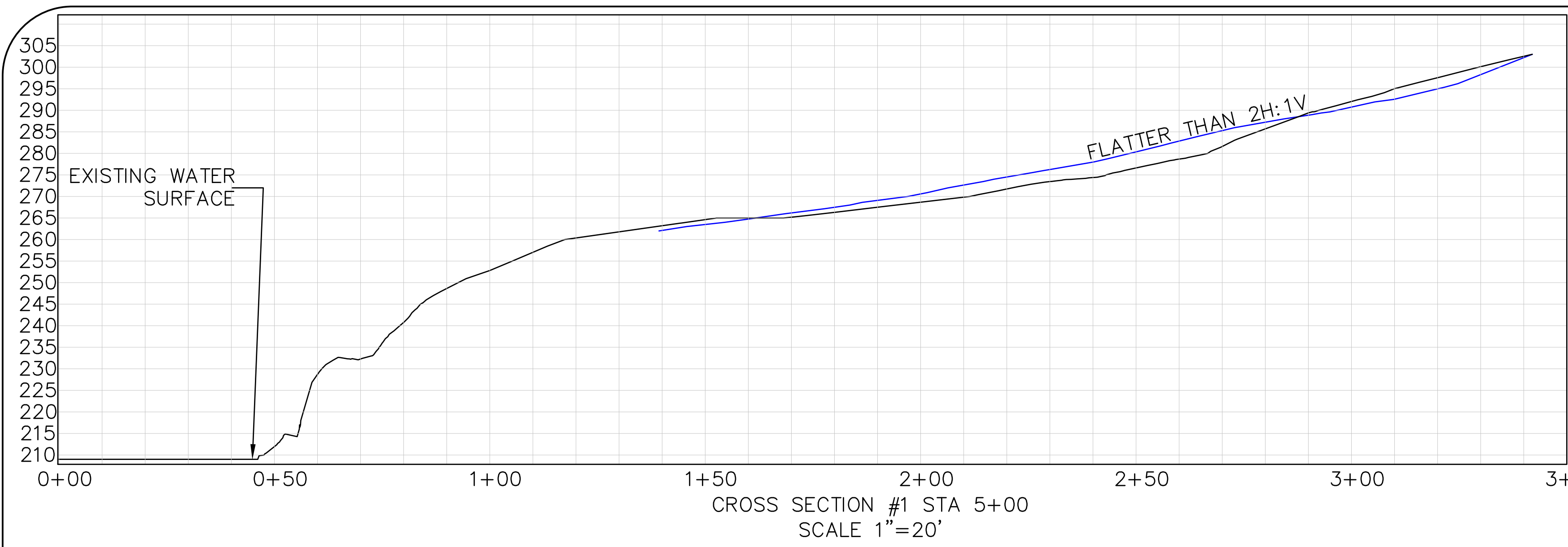
JR MERIT
INDUSTRIAL CONTRACTORS

PACIFICORP ENERGY
A DIVISION OF PACIFICORP

RIVERBEND ENGINEERING, LLC

102 3rd Street Pagosa Springs, CO 81147
Tel: 970.264.1195 FAX: 970.264.1196
www.riverrestoration.com

| | |
|----------------------------------------|-----------|
| CONDIT DAM DECOMMISSIONING | |
| FIGURE C3 | |
| PROPOSED GRADING PLAN NORTH SECTION | |
| Scale: 1" = 100 ft | 2/08/2012 |



— EXISTING GROUND (12.21.11)
— PROPOSED CROSS SECTION



| | |
|-------------------------------------|-----------|
| CONDIT DAM DECOMMISSIONING | |
| FIGURE C4 CROSS SECTIONS | |
| Scale: 1" = 20 ft | 2/20/2012 |