

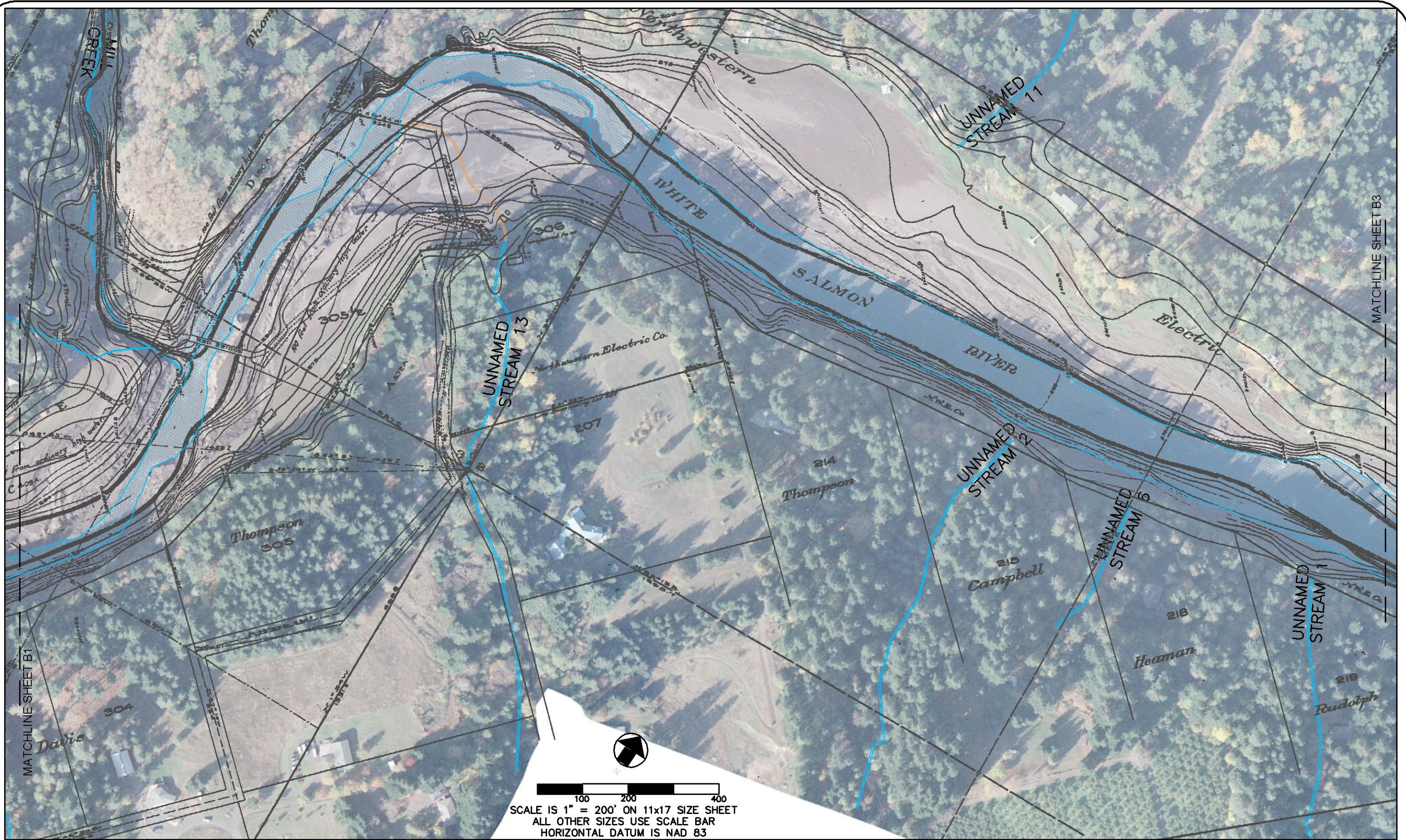
— 11-4-2011 WATER SURFACE
 — 1912 SURVEY IMAGE
 NEWELL GOSSETT AND WALSH


MERIT
 INDUSTRIAL CONTRACTORS

 A DIVISION OF PACIFICORP


RIVERBEND ENGINEERING, LLC
 102 3rd Street Pagosa Springs, CO 81147
 Tel: 970.264.1195 FAX: 970.264.1196
www.riverrestoration.com

CONDIT DAM DECOMMISSIONING		Sheet
FIGURE B1		B1
1912 TOPOGRAPHY WITH 2011 AERIAL IMAGERY STA 0+00 -36+00		
Scale: 1" = 200 ft	12-15-2011	



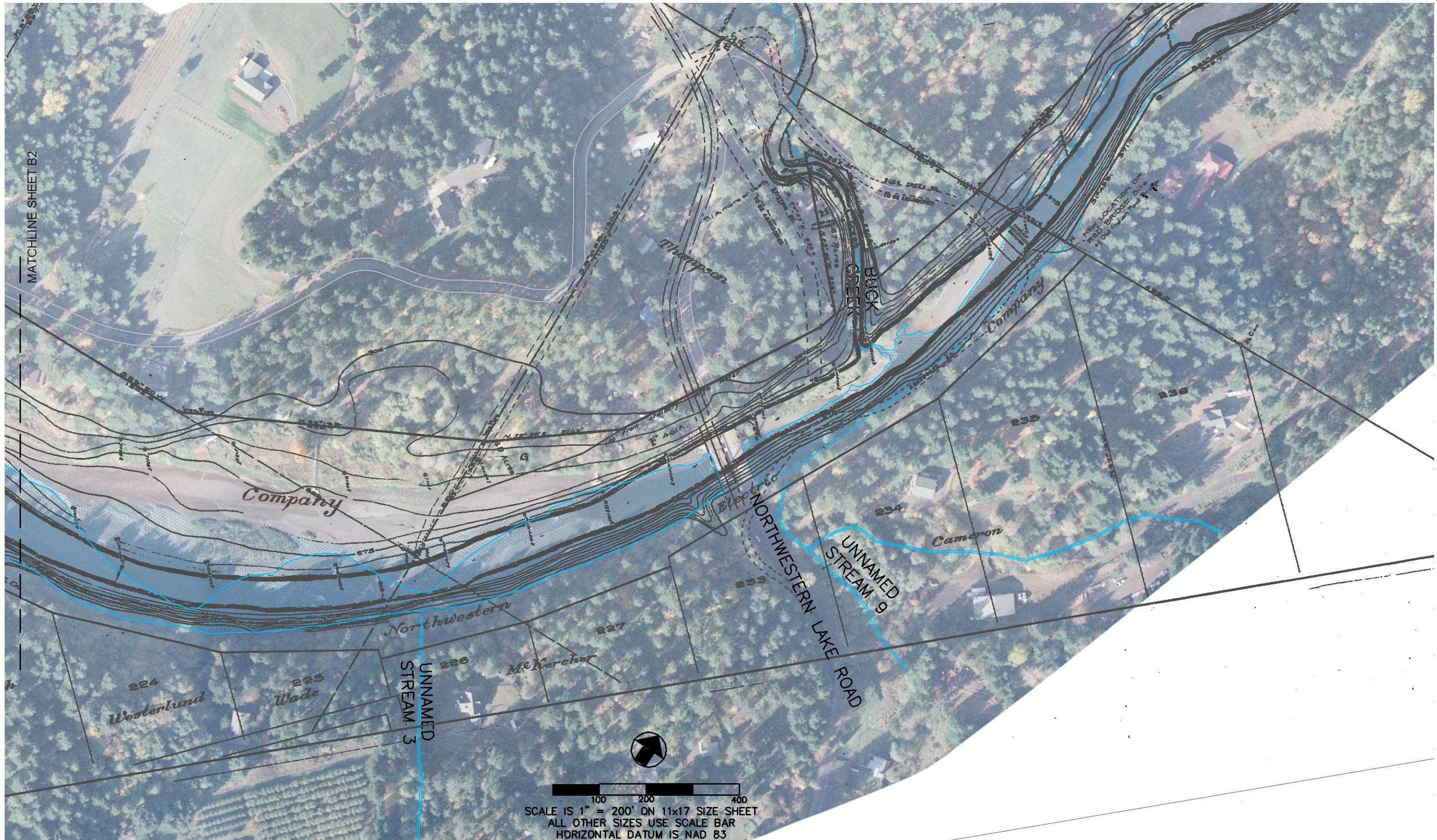
— 11-4-2011 WATER SURFACE
— 1912 SURVEY IMAGE
 NEWELL GOSSETT AND WALSH





RIVERBEND ENGINEERING, LLC
 102 3rd Street Pigeon Springs, CO 81147
 Tel: 970.264.1195 FAX: 970.264.1196
www.riverrestoration.com

CONDIT DAM DECOMMISSIONING		Sheet
FIGURE B2		B2
1912 TOPOGRAPHY WITH 2011 AERIAL IMAGERY STA 0+00 -36+00		
Scale: 1" = 200 ft	12-15-2011	



MATCHLINE SHEET B2

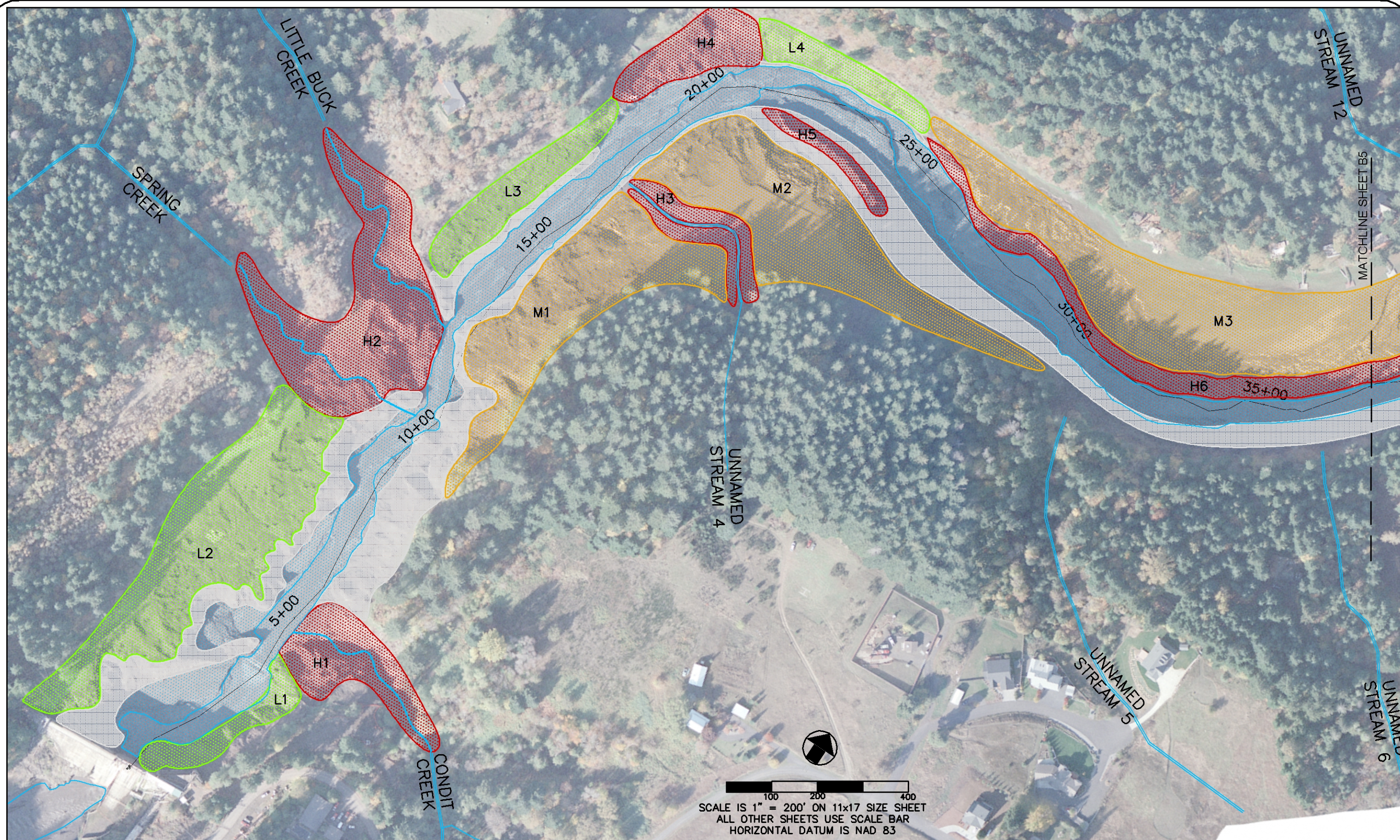
- 11-4-2011 WATER SURFACE
- 1912 SURVEY IMAGE
NEWELL GOSSETT AND WALSH

SCALE IS 1" = 200' ON 11x17 SIZE SHEET
ALL OTHER SIZES USE SCALE BAR
HORIZONTAL DATUM IS NAD 83



RIVERBEND ENGINEERING, LLC
102 3rd Street Pagosa Springs, CO 81147
Tel: 970.264.1195 FAX: 970.264.1196
www.riverrestoration.com

CONDIT DAM DECOMMISSIONING		Sheet
FIGURE B3		B3
1912 TOPOGRAPHY WITH 2011 AERIAL IMAGERY STA 0+00 -36+00		
Scale: 1" = 200 ft	12-15-2011	



SCALE IS 1" = 200' ON 11x17 SIZE SHEET
 ALL OTHER SHEETS USE SCALE BAR
 HORIZONTAL DATUM IS NAD 83

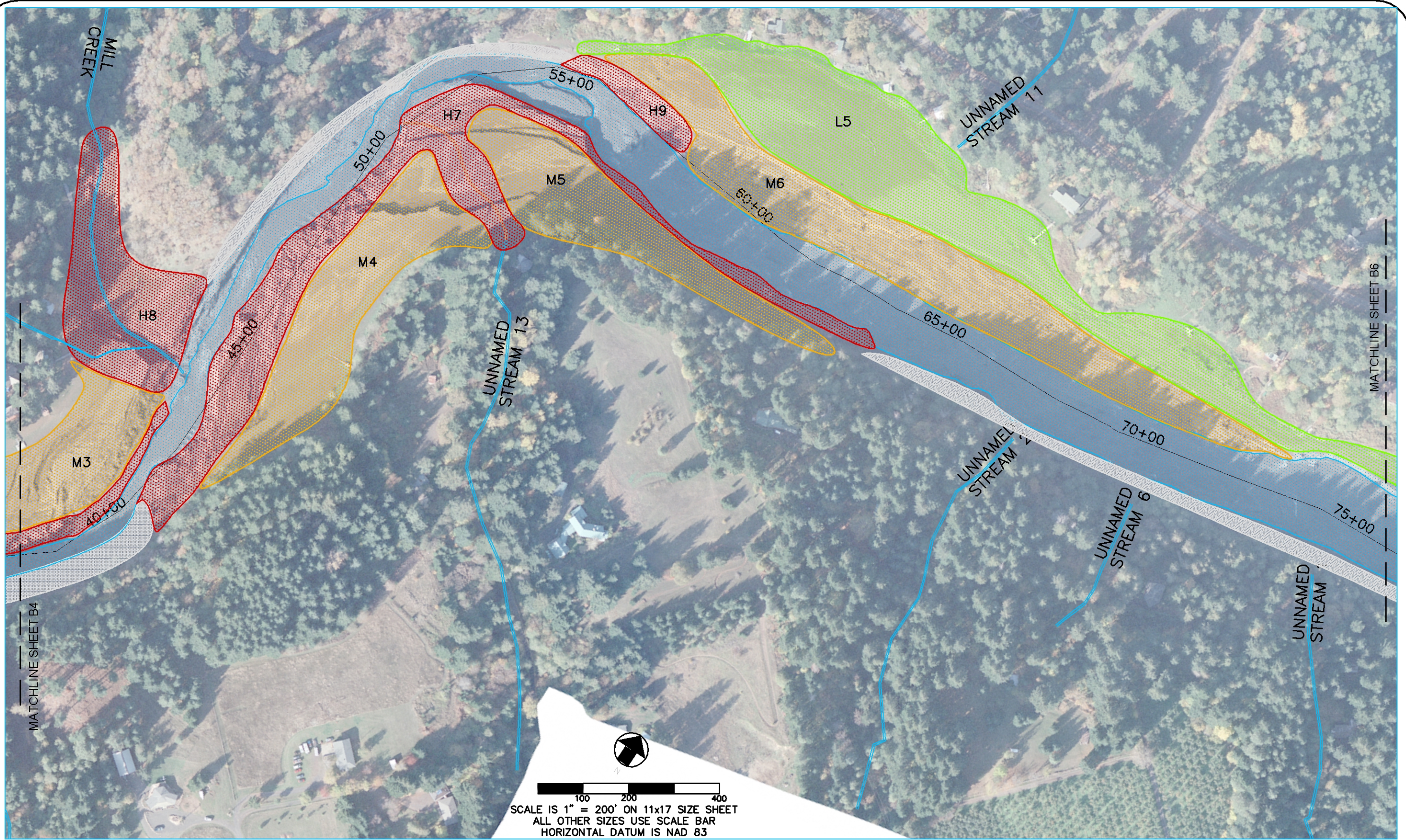
- LOW INSTABILITY ZONE
- MEDIUM INSTABILITY ZONE
- HIGH INSTABILITY ZONE
- ROCK OUTCROP ZONE
- RIVER CHANNEL ZONE
- 11-4-2011 WATER SURFACE

JR MERIT
 INDUSTRIAL CONTRACTORS

PACIFICORP ENERGY
 A DIVISION OF PACIFICORP

RIVERBEND ENGINEERING, LLC
 102 3rd Street Pagosa Springs, CO 81147
 Tel: 970.264.1195 FAX: 970.264.1195
 www.riverrestoration.com

CONDIT DAM DECOMMISSIONING		Sheet
FIGURE B4		B4
SEDIMENT STABILITY REPORT		
STA 0+00 -36+00		
Scale: 1" = 200 ft	12-06-2011	



MATCHLINE SHEET B4

MATCHLINE SHEET B6

SCALE IS 1" = 200' ON 11x17 SIZE SHEET
 ALL OTHER SIZES USE SCALE BAR
 HORIZONTAL DATUM IS NAD 83

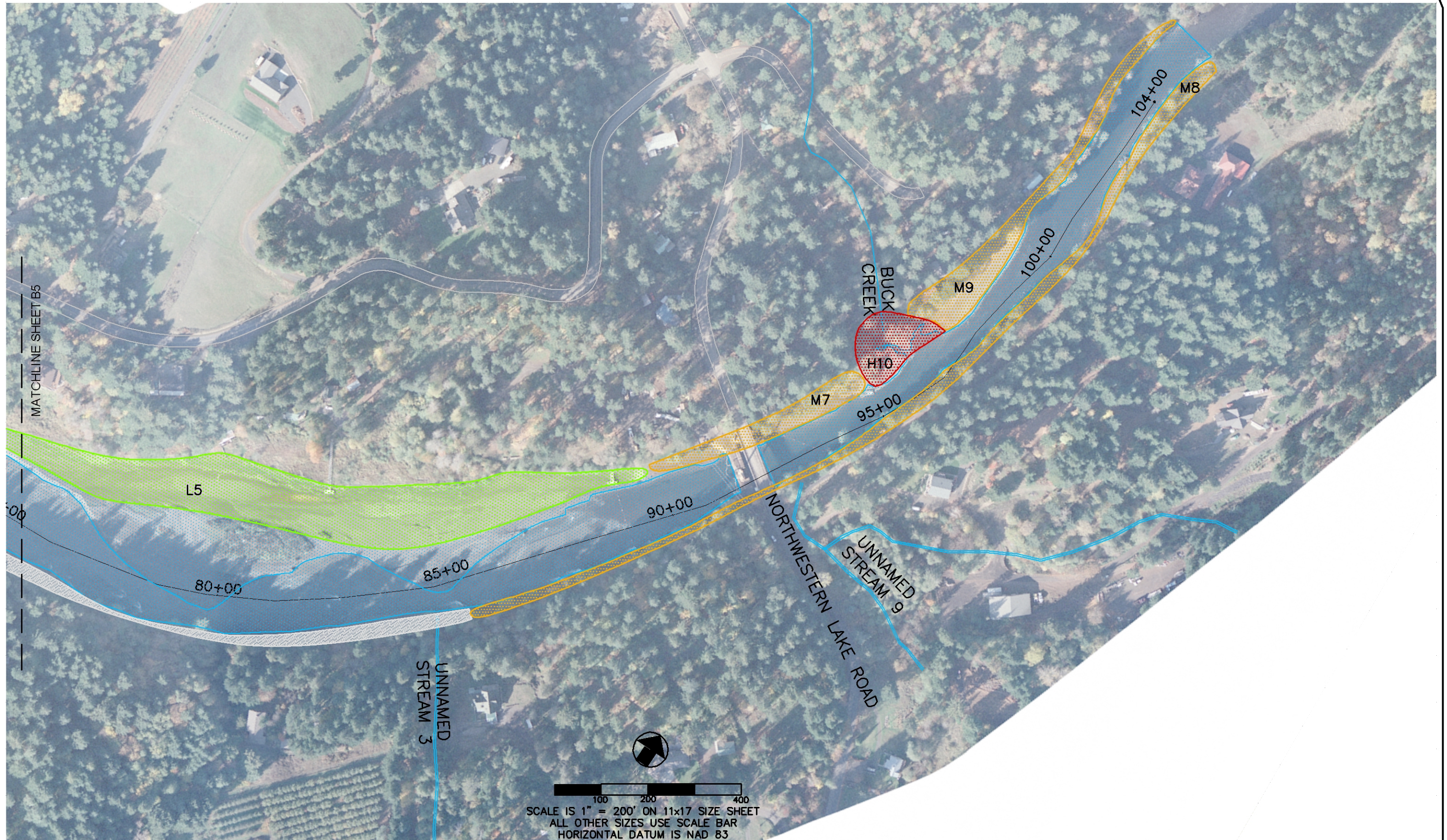
- LOW INSTABILITY ZONE
- MEDIUM INSTABILITY ZONE
- HIGH INSTABILITY ZONE
- ROCK OUTCROP ZONE
- RIVER CHANNEL ZONE
- 11-4-2011 WATER SURFACE

JR MERIT
 INDUSTRIAL CONTRACTORS

PACIFICORP ENERGY
 A DIVISION OF PACIFICORP

RIVERBEND ENGINEERING, LLC
 102 3rd Street Pagosa Springs, CO 81147
 Tel: 970.264.1195 FAX: 970.264.1196
 www.riverrestoration.com

CONDIT DAM DECOMMISSIONING		Sheet
FIGURE B5		B5
SEDIMENT STABILITY REPORT		
STA 36+00-75+00		
Scale: 1" = 200 ft	12-06-2011	



SCALE IS 1" = 200' ON 11x17 SIZE SHEET
 ALL OTHER SIZES USE SCALE BAR
 HORIZONTAL DATUM IS NAD 83

- LOW INSTABILITY ZONE
- MEDIUM INSTABILITY ZONE
- HIGH INSTABILITY ZONE
- ROCK OUTCROP ZONE
- RIVER CHANNEL ZONE
- 11-4-2011 WATER SURFACE

JR MERIT
 INDUSTRIAL CONTRACTORS

PACIFICORP ENERGY
 A DIVISION OF PACIFICORP

RIVERBEND ENGINEERING, LLC
 102 3rd Street Pagosa Springs, CO 81147
 Tel: 970.264.1195 FAX: 970.264.1196
 www.riverrestoration.com

CONDIT DAM DECOMMISSIONING		Sheet
FIGURE B6		B6
SEDIMENT STABILITY REPORT STA 75+00-104+00		
Scale: 1" = 200 ft	12-06-2011	