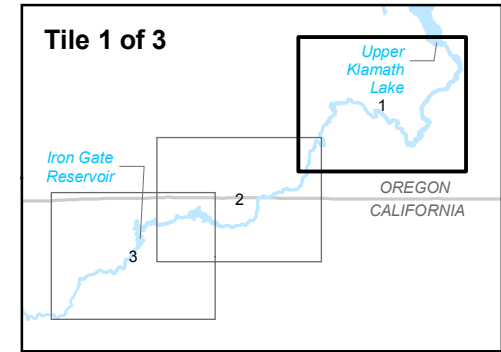
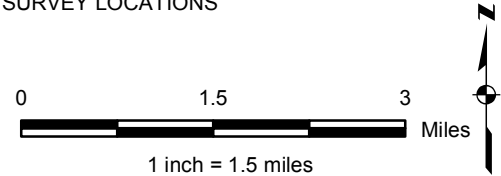


LEGEND

- 2002 NORTHERN SPOTTED OWL CALLING STATIONS
- 2003 GREAT GRAY OWL CALLING STATION
- 2003 NORTHERN SPOTTED OWL CALLING STATION
- 2003 GREAT GRAY OWL & NORTHERN SPOTTED OWL CALLING STATION
- 2002 NORTHERN GOSHAWK CALLING STATION
- KBO ROI SURVEY LOCATIONS
- WILDLIFE SURVEY LOCATIONS
- PROJECT FACILITY BUFFER AREA*
- PACIFICORP RECREATION SITE BUFFER AREA*
- GREAT GRAY OWL-SUITABLE HABITAT
- NORTHERN GOSHAWK-SUITABLE HABITAT
- NORTHERN SPOTTED OWL-SUITABLE HABITAT
- PROJECT FACILITY SURVEY
- PRIMARY STUDY AREA
- SECONDARY STUDY AREA
- PROJECT SECTION BOUNDARY
- HIGHWAY
- TOWNSHIP/RANGE
- STREAM
- OPEN WATER

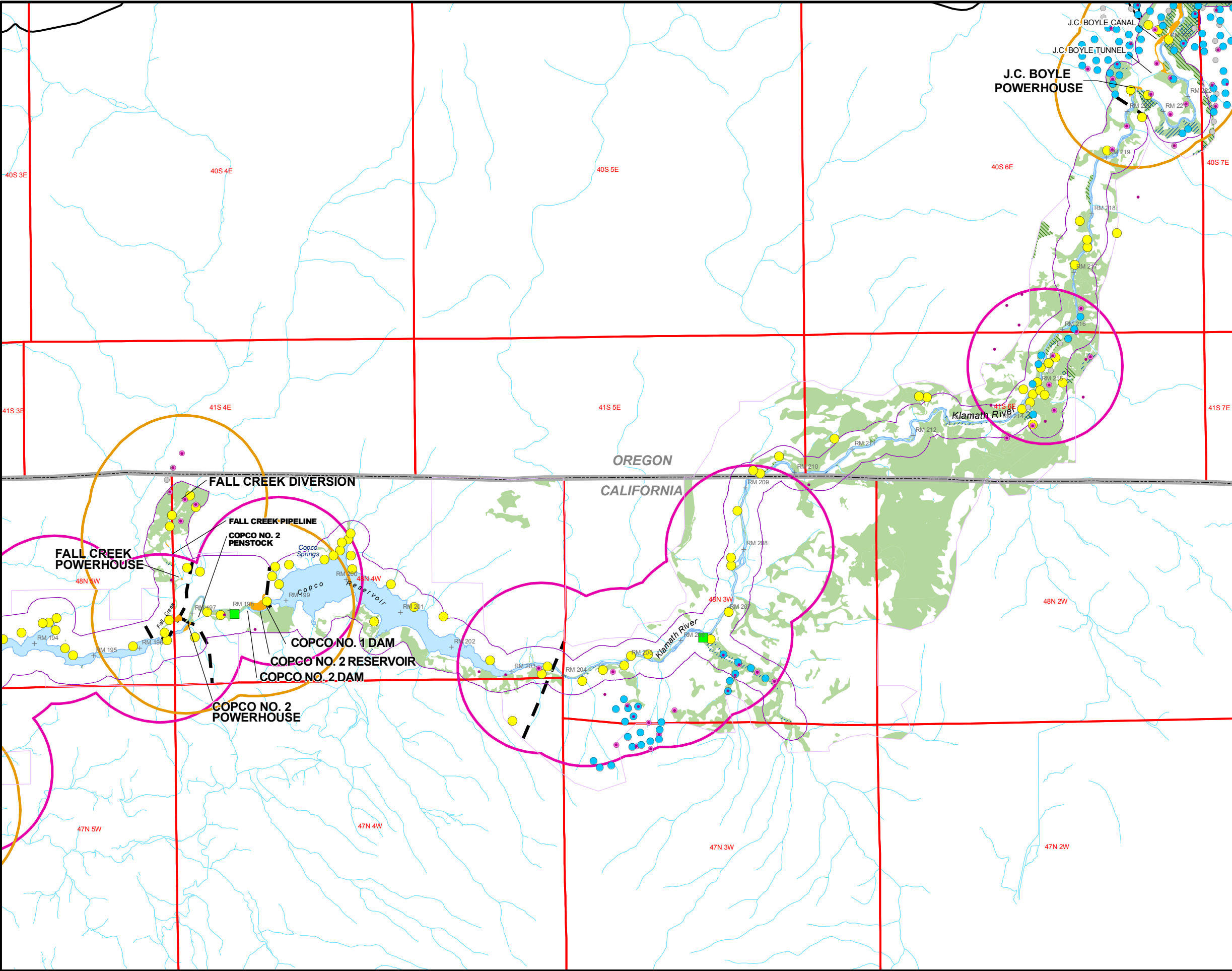
*BUFFER DISTANCES: 1.3 MILES IN CALIFORNIA
1.2 MILES IN OREGON

SEE FIGURE 4.4-1 FOR TES AMPHIBIAN
SURVEY LOCATIONS



Klamath Hydroelectric Project

Figure 5.4-1 (1 of 3)
TES Wildlife Survey Locations

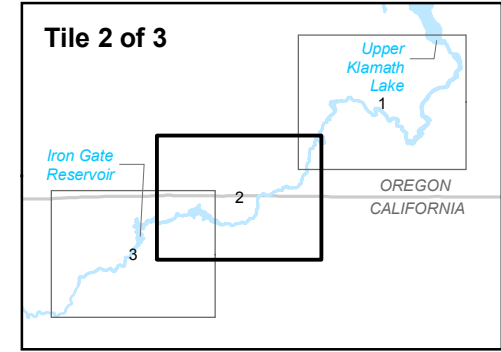
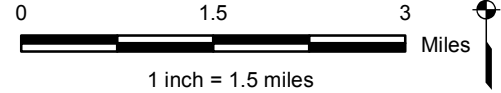


LEGEND

- 2002 NORTHERN SPOTTED OWL CALLING STATIONS
- 2003 GREAT GRAY OWL CALLING STATION
- 2003 NORTHERN SPOTTED OWL CALLING STATION
- 2003 GREAT GRAY OWL & NORTHERN SPOTTED OWL CALLING STATION
- 2002 NORTHERN GOSHAWK CALLING STATION
- KBO ROI SURVEY LOCATIONS
- WILDLIFE SURVEY LOCATIONS
- PROJECT FACILITY BUFFER AREA*
- PACIFICORP RECREATION SITE BUFFER AREA*
- GREAT GRAY OWL-SUITABLE HABITAT
- NORTHERN GOSHAWK-SUITABLE HABITAT
- NORTHERN SPOTTED OWL-SUITABLE HABITAT
- PROJECT FACILITY SURVEY
- PRIMARY STUDY AREA
- SECONDARY STUDY AREA
- PROJECT SECTION BOUNDARY
- HIGHWAY
- TOWNSHIP/RANGE
- STREAM
- OPEN WATER

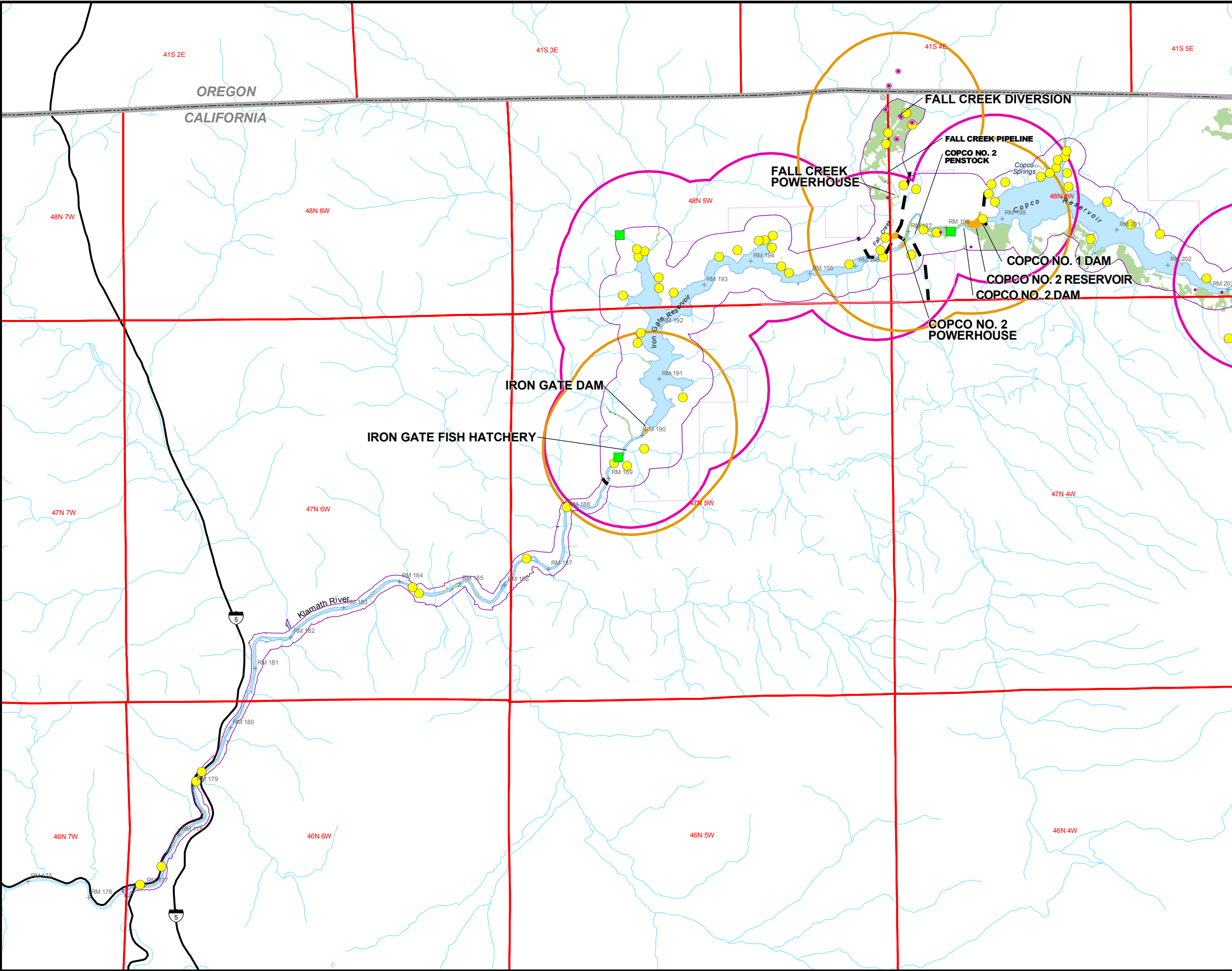
*BUFFER DISTANCES: 1.3 MILES IN CALIFORNIA
1.2 MILES IN OREGON

SEE FIGURE 4.4-1 FOR TES AMPHIBIAN
SURVEY LOCATIONS



Klamath Hydroelectric Project

Figure 5.4-1 (2 of 3)
TES Wildlife Survey Locations



LEGEND

2002 NORTHERN SPOTTED OWL CALLING STATIONS

2003 GREAT GRAY OWL CALLING STATION

2003 NORTHERN SPOTTED OWL CALLING STATION

2003 GREAT GRAY OWL & NORTHERN SPOTTED OWL CALLING STATION

2002 NORTHERN GOSHAWK CALLING STATION

KBO ROI SURVEY LOCATIONS

WILDLIFE SURVEY LOCATIONS

PROJECT FACILITY BUFFER AREA*

PACIFICORP RECREATION SITE BUFFER AREA*

GREAT GRAY OWL-SUITABLE HABITAT

NORTHERN GOSHAWK-SUITABLE HABITAT

NORTHERN SPOTTED OWL-SUITABLE HABITAT

PROJECT FACILITY SURVEY

PRIMARY STUDY AREA

SECONDARY STUDY AREA

PROJECT SECTION BOUNDARY

HIGHWAY

TOWNSHIP/RANGE

STREAM

OPEN WATER

*BUFFER DISTANCES: 1.3 MILES IN CALIFORNIA
1.2 MILES IN OREGON

SEE FIGURE 4.4-1 FOR TES AMPHIBIAN SURVEY LOCATIONS

Klamath Hydroelectric Project

Figure 5.4-1 (3 of 3)
TES Wildlife Survey Locations

PACIFICORP © February 2004 PacifiCorp RDD \\LOKIN\PROJECTS\RDDGIS\PACIFICORP\MXDS\CH_FIGURE5_4-1.MXD FIGURES_4-1.PDF 01/21/2004