

PRE- PROPOSAL FORM -

1. Applicant organization.

USDA Forest Service
Gifford Pinchot National Forest

2. Organization purpose

Resource management agency

3. Project manager (name, address, telephone, email, fax).

Adam Haspiel
Mount St. Helens National Volcanic Monument
42218 NE Yale Bridge Road
Amboy, WA 98601
360-449-7833
360-449-7801-FAX
ahaspiel@fs.fed.us e-mail

Fishery Biologist

20+ years experience with fish habitat restoration projects

Note: Please attach a resume or other description of the education and experience of the persons responsible for project implementation.

4. Project Title

Lewis River Side Channel Near Muddy River Instream Habitat Restoration

5. Summary of Project proposal

Approximately 0.25 miles of side channel habitat in the Lewis River would have 16 structures placed in it. Approximately 160 piece of large wood material would be placed in the project area. Woody material for these structures would come from a nearby Pepper-cat Timber Sale Unit. Wood will be transported to the staging area at the confluence of the Muddy River and Lewis River via a private spur road off Forest Road 9039350. Wood would be transported to structure sites via a rubber tired skidder and excavator. This project would create and improve rearing opportunities for coho salmon. Wood for this project would come from USFS lands and possibly from Swift Reservoir cleaning operations.

Priority 1: *Benefit fish recovery throughout the North Fork Lewis River, with priority to federal ESA-listed species.*

Steelhead trout are listed as a threatened species under the ESA

Coho salmon are listed as a threatened species under the ESA

Chinook salmon are listed as a threatened species under the ESA

Bull trout are listed as a threatened species under the ESA

Priority 2: Support the reintroduction of anadromous fish throughout the basin.

Large woody material in this high quality side channel will increase pools and pool quality within the side channel, providing rearing and overwintering opportunities for juvenile salmonids, particularly coho. This project will increase the chances for success when anadromous fish are reintroduced into the basin.

Priority 3: Enhance fish habitat in the Lewis River Basin-, with priority given to the North Fork Lewis River.

Large woody material will directly enhance and increase fish habitat in the North Fork Lewis River Basin for re-introduced anadromous fish.

6. Project location (including River/Stream and Lat/Long coordinates if available).

Lewis River - This is an existing side channel that is flowing and watered year round From Eagle Cliff Bridge RM 1.6 to RM 1.9

7. Expected products and results

Each structure should create a pool capable of rearing a combination of juvenile coho salmon and steelhead trout. The woody material would also create quality hiding cover and increase production in the side channel.

8. Benefits of proposed Project

The project will benefit anadromous fish by increasing rearing habitat for juvenile fish. This side channel will act as a refugia from high flows in the mainstem Lewis River.

9. Project partners and roles. Partners include: Swift Community Action Team, and Equipment Rental Services.

10. Community involvement (to date and planned).

The Forest Service maintains active community involvement by scheduling regular events with legislators, scientists, members, and key individuals for continual program and project development along with cultivating strong ties with agencies, academia, and local citizen groups. Monitoring activities will include using the Mt. St. Helens institute and their Youth Stream Team to take measurements.

11. Procedure for monitoring and reporting on results.

This project will be monitored by taking pre and post project cross sections, pebble counts, snorkel counts, spawning surveys and photo points.

12. Project schedule (anticipated start date, major milestones, completion date).

The NEPA for this project not been started yet.

NEPA- Summer 2011/Winter 2012

Project implementation July 2012

Pre-project monitoring 2011 and/or 2012

Post project monitoring 2012 and beyond.

13. Funding requested (estimated cost for project design, permitting (including necessary resource surveys), construction, and monitoring).

Requesting a total of \$47K as a cost share portion for project implementation and monitoring.

NEPA cost- 8K

Monitoring cost-4K

Logging and transport of trees-9K

Skidder and Excavator- 16K

Project Preparation and administration-5K

Materials and supplies-5K.

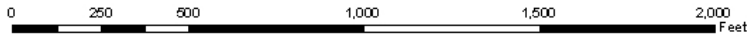
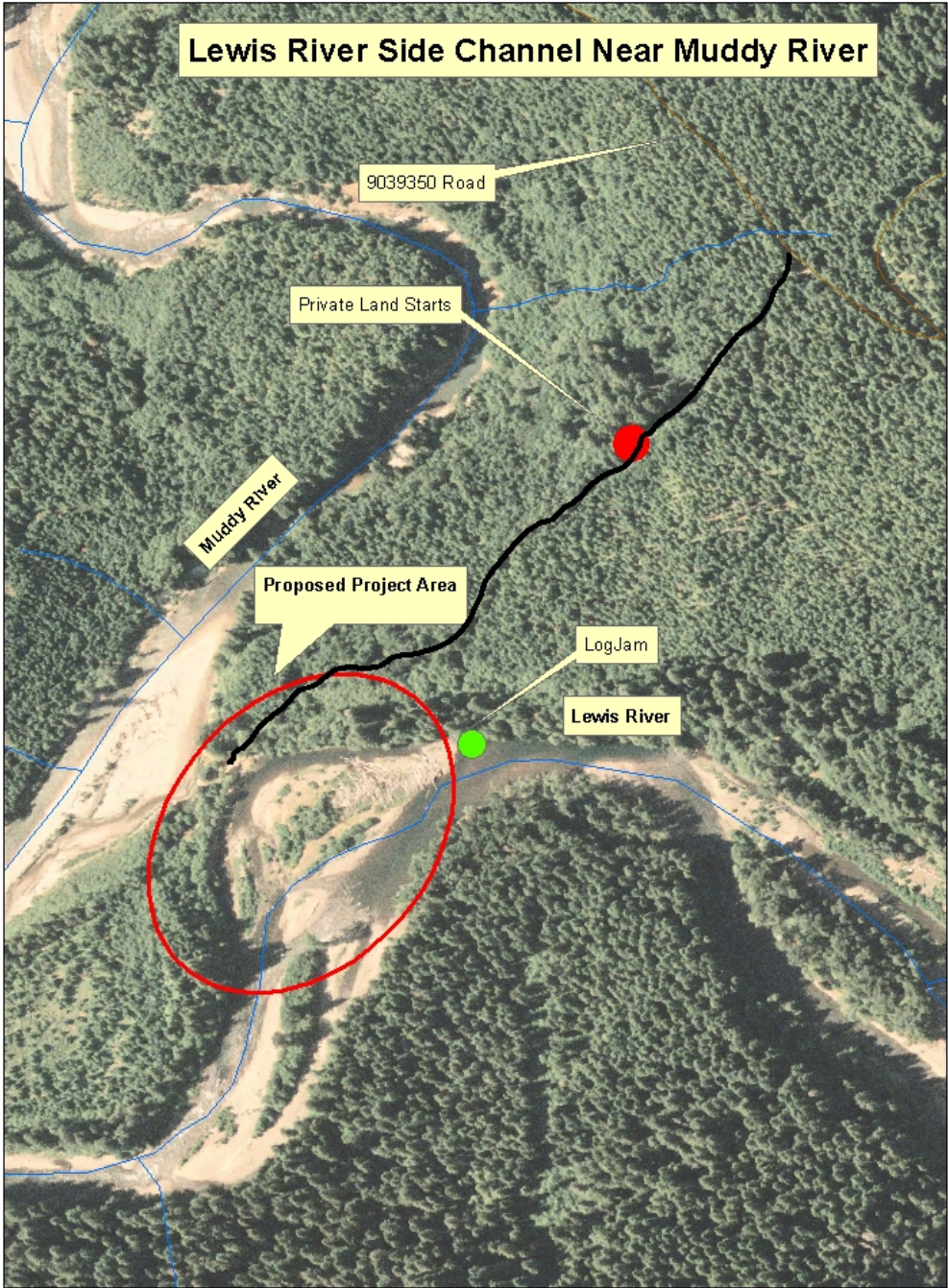
14. Type and source of other contributions (Identify cash (C) and/or in-kind (IK), and status, pending (P) or confirmed (Co)).

Gifford Pinchot National Forest	\$8,000 (IK)	(Co)
Materials from USFS	\$8,000 (IK)	(Co)
Mt St Helens Institute	\$2,000 (IK)	(Co)
SCAT	\$800 (IK)	(Co)
Equipment Rental Services	\$800 (IK)	(Co)

15. If you have technical assistance needs for this project, please briefly describe such needs.

None Needed

Lewis River Side Channel Near Muddy River



Lewis River Side Channel Near Muddy River

Proposed Project Area

