

**Lewis River Hydroelectric Projects Settlement Agreement  
Aquatic Coordination Committee (ACC)  
Meeting Agenda**

**Date & Time:**            **Thursday, October 10, 2019  
9:00 a.m. – 11:15 a.m.**

**Place:**                    **Merwin Hydro Control Center  
105 Merwin Village Court  
Ariel, WA 98603**

**Contacts:**                **Erik Lesko: (503) 412-8401**

<b>Time</b>	<b>Discussion Item</b>
9:00 a.m.	Welcome <ul style="list-style-type: none"><li>➤ Review Agenda and ACC 9/12/19 Meeting Notes</li><li>➤ Comment &amp; Accept Agenda and 9/12/19 Meeting Notes</li></ul>
9:10 a.m.	Public Comment Opportunity
9:15 a.m.	2019/2020 Aquatic Fund Preproposal Evaluation – DECISION MEETING
10:15 a.m.	Study/Work Product Updates <ul style="list-style-type: none"><li>○ In Lieu/ADR Update</li><li>○ 2020 Meeting Schedule</li></ul>
11:00 a.m.	<ul style="list-style-type: none"><li>➤ Next Meeting's Agenda</li><li>➤ Public Comment Opportunity</li></ul> Note: all meeting notes and the meeting schedule can be located at: <a href="https://www.pacificorp.com/energy/hydro/lewis-river/acc-tcc.html">https://www.pacificorp.com/energy/hydro/lewis-river/acc-tcc.html</a>
<b>11:15 a.m.</b>	<b>Adjourn</b>

Join by Phone

+1 (503) 813-5252 [Portland, Ore.]

+1 (855) 499-5252 [Toll Free]

**Conference ID: 6325627**

**FINAL Meeting Notes**  
**Lewis River License Implementation**  
**Aquatic Coordination Committee (ACC) Meeting**  
**October 10, 2019**  
**Merwin Hydro Control Center, Ariel, WA**

**ACC Representatives Present (11)**

Kim McCune, PacifiCorp  
Chris Karchesky, PacifiCorp  
Erik Lesko, PacifiCorp  
Mark Ferraiolo, PacifiCorp  
Amanda Froberg, Cowlitz PUD  
Bryce Glaser, WDFW  
Peggy Miller, WDFW  
Josh Holowatz, WDFW  
Steve West, LCFRB  
Joshua Ashline, NMFS  
Jonathan Stumpf, American Rivers

**Calendar:**

November 14, 2019	ACC Meeting	Conference Call
-------------------	-------------	-----------------

Assignments from October 10, 2019	Status
McCune: Distribute NMFS 9/25/19 In Lieu Reports comments to the ACC upon receipt and approval from NMFS.	<b>Complete – 11/14/19</b>

Assignments from June 13, 2019	Status
Wadsworth: Schedule bull trout subgroup meeting end of July, 2019. As of 11/14/19 Bryce Glaser reaching out to WDFW staff to schedule meeting.	<b>Pending</b>

Parking Lot Items	Status
Tracy: Stage 0 webinar PowerPoint presentation to ACC. As of 11/14/19 Tracy is asking for an update from USFS staff regarding timeline for presentation in early winter 2020 or spring 2020.	<b>Tentative</b>
All: What are things to focus on; Salmon Port for review of aquatic fund projects.	

**Opening, Review of Agenda and Meeting Notes**

Erik Lesko (PacifiCorp) called the meeting to order at 9:15am and reviewed the agenda. No additional agenda items were requested.

Lesko also reviewed the September 12, 2019 meeting notes and assignments. Chris Karchesky (PacifiCorp) requested the following addition on page 10 under Swift Floating Surface Collector that was overlooked:

*Karchesky also mentioned that the Swift FSC was struck by lightning on August 9, 2019. Extensive damage occurred to several electrical systems that control the designed functionality of the facility. PacifiCorp is working through the damage, and anticipate repairs will be complete before the early October start date.*

#### **Public Comment**

None

#### **2019/2020 Aquatic Fund Preproposal Evaluation – DECISION MEETING**

Lesko provided a cursory review of the following 4 preproposals submitted by the September 27, 2019 due date.

McCune distributed the links to each ACC representative on September 30, 2019 for their review and requested an evaluation form submittal to PacifiCorp (meet or does not meet) for each project no later than close of business October 9, 2019.

The ACC attendees agreed that each aquatic fund project submitted qualified to proceed to full proposal. Several ACC representatives present requested more time to submit their evaluation sheets and several ACC representatives were absent so the ACC attendees agreed that an additional 7-day review & comment period is appropriate for review and comment.

In addition, Lesko provided an evaluation spreadsheet for the (4) four pre-proposals ([Attachment A](#)) to include ACC comments received thus far. Trout Unlimited had concerns regarding the Lewis River 21 Phase III project, but the ACC members present decided that the project was qualified to move forward. TU concerns will be provided to the applicant as part of the ACC question matrix that will be distributed to all applicants. He also added a few images to show where coho and spring Chinook redds have been documented in the proposed areas.

Each ACC representative is to submit an Evaluation Criteria document to determine if the project “meets” or “does not meet” the resource project objectives as outlined below.

The ACC further agreed that written comments, clarifications, etc. **are due no later than Friday, October 25, 2019** in accordance with the timeline below.

## Attachment E

Table 4.1. Funding Process Timeline

Activity	Target Milestone Date
Submit Request For Pre-Proposal Forms	Late May
Pre-Proposal Forms due	Late September
Pre-proposal forms distributed to ACC & Utilities	Late September
ACC submits Pre-Proposal Listing and Evaluation Sheets (Attachment D). Discuss and approve pre-proposals that qualify for full proposals. Applicants are welcome to attend and observe only.	October ACC meeting
ACC members shall provide written clarification, suggestions, comments or questions for Selected Projects to the Utilities for inclusion in the Request For Full Proposals.	Late October
Submit Request For Full Proposals to Selected Applicants	Early November
Conduct Proposed Project Information Meeting (applicant presentations)	December ACC meeting
ACC members submit written request for clarification of project information if questions not answered in previous meeting/presentation.	December 27
Final Full Proposals due (ACC requests for clarification need to be included as an Appendix)	February 3
Final Full Proposals submitted to ACC for 30-day review	February 4
ACC Proposal Evaluation Sheet (Attachment D, Part B-E) due to Utilities	March 6
*Conduct Project Selection Meeting	March ACC meeting
Provide add'l 7-day review period for absentee ACC participants, if needed	Third Thursday in March
Submit Project Selection Report to FERC	By April 15th

\*Project applicants not permitted to attend this meeting.

### Initial Review (Part A) Matrix

	Lewis River 21 Phase III	Rush Creek Side Channel Reactivation	Eagle Island chum spawning channel construction	Anderson NF Lewis River Restoration
Applicant	GPNF	GPNF	WDFW	Cowlitz Cons.
Funding Request	\$227,000	\$130,000	\$175,000	\$254,000
UTILITIES	Meets	Meets	Meets	Meets
LCFRB	Meets	Meets	Meets	Meets
WDFW	Meets	Meets		Meets
USFWS				
NOAA				
COWLITZ TRIBE				
YAKAMA NATION				
FISH FIRST				
AMERICAN RIVERS				
TROUT UNLIMITED	Does not meet*	Meets	Meets	Meets
USFS / GPNF				

1. Benefit fish recovery throughout the North Fork Lewis River, priority to federal ESA-listed species
2. Support the re-introduction of anadromous fish throughout the Basin (this objective will not be evaluated for bull trout proposals)
3. Enhance fish habitat in the Lewis River Basin, with priority given to the North Fork Lewis River.
4. Requesting funding for a project that would otherwise be required by law or mitigation requirement?
5. Maintain consistency with applicable Federal, State, and local laws and, to the extent feasible, consistent with policies and comprehensive plans in effect at the time the project is proposed.

McCune provided the following Aquatic Funds balance as of October 1, 2019:

- Aquatic Fund (Resource) – \$2,701,866.58
- Aquatic Fund (Bull Trout) - \$ 779,219.87

Each fund will accrue interest on the date nearest April 30, 2020. An additional \$225,000 will be contributed to the Resource fund on or about April 30, 2020. No additional contributions will be made to the Bull Trout fund.

<Break 10:10am>

<Reconvene 10:15am>

### In Lieu Update

In Todd Olson (PacifiCorp) absence Amanda Froberg (Cowlitz PUD) provided the following update as provided by Olson via email:

*On September 30, PacifiCorp provided a report to FERC noting that an ADR meeting was conducted on September 19th, and that many of the ACC representatives attended.*

*NMFS is now scheduling follow-up meetings discussed at the September 19 meeting. The Utilities are revising the Action Documents (Strategic, Monitoring and bull trout passage plan) and*

*preparing the draft license amendment application to FERC. Per the Utilities prior filings with FERC, we are working towards updating these documents for submittal to FERC.*

*If you have any questions, please email Todd and he will respond when he returns.*

Bryce Glaser had a couple clarifying questions and Froberg indicated she will send those questions to Todd Olson.

- Will there be any more ACC review prior to formal submittal?
- Is there a new expected date that the Draft License Amendment Application will be submitted?

Josh Ashline (NMFS) also noted NMFS submitted comments to Todd Olson of PacifiCorp on September 25, 2019 specific to the In Lieu documents (strategic plan, M&E plan, Bull trout passage) and will request Jennifer Quan (NMFS) approval to distribute to the ACC representatives. Ashline will send to PacifiCorp and in turn PacifiCorp will distribute to the ACC. Bryce Glaser indicated that WDFW believes comments submitted during the ACC review process of the In Lieu plans should be available to all ACC representatives.

### **2020 Meeting Schedule**

The ACC agreed to continue its meetings once per month every other Thursday but to modify the start time to 9:30am and adapt as needed.

McCune will distribute the 2020 ACC Meeting invites to each ACC representative.

### **Study/Work Product Updates**

#### **H&S/ATS Update**

Lesko informed the ACC attendees that the tentative review date for the comprehensive periodic review by DJ Warren has been delayed to November 1, 2019. The draft H&S Plan is still working its way through the ATS which is causing a slight delay. The ATS hopes to have final comments by October 18, 2019 and a final review draft by October 25.

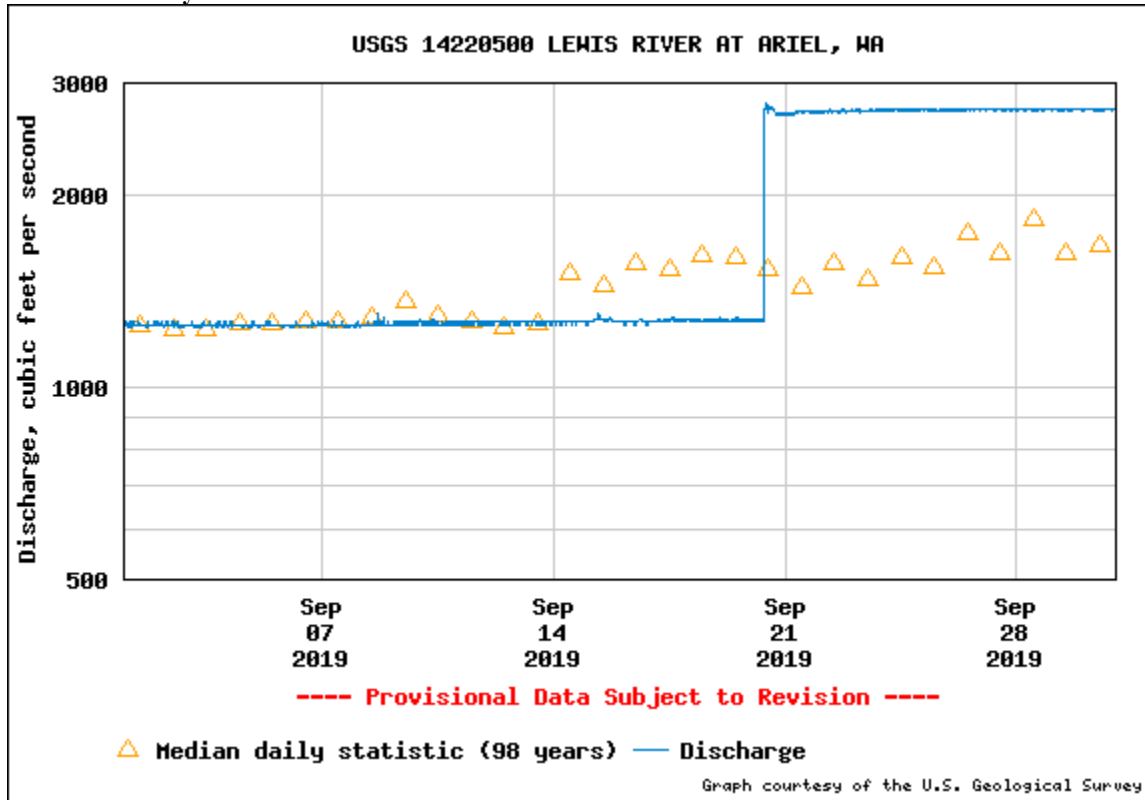
#### **Merwin Fish Collection Facility and General Operations ([Attachment B](#))**

During the month of September, a total of 1,665 fish were captured at the Merwin Dam Adult Fish Collection Facility. The majority of these fish were early-run coho (73.5%).

The Merwin Dam Fish Collection Facility ran continuously during the month of September.

River flow below Merwin Dam was maintained at approximately 1,250 cfs from September 1-19. River flow then increased to approximately 2,750 cfs, where it remained for the remainder of the month (Table 1).

**Table 1. Discharge in cubic feet per second recorded at the USGS Ariel, WA gauge (14220500) located immediately downstream of Merwin Dam.**



### Upstream Transport ([Attachment B](#))

Eight (8) Blank Wire Tag (BWT) winter steelhead were captured by the end of December 2018 and were transported upstream as part of the 2019 run year. An additional 38 adults were taken upstream in January 2019 and another 30 in February, 106 in March, 705 in April, 110 in May, and 4 in June for a total of 1,001 BWT winter steelhead transported as part of the 2019 run year. Twelve (12) additional winter steelhead of natural origin (NOR) containing PIT tags from the upper basin were also transported upstream as part of the 2019 run year. A combined total of 1,013 adult winter steelhead have been transported upstream of Swift Dam as part of the 2019 run year (Table 2).

**Table 2. Total number of adult winter steelhead transported upstream of Swift Dam in 2019.**

Run Year	Male	Female	Total adult winter steelhead taken upstream of Swift Dam

<b>2012</b>	141	48	<b>189</b>
<b>2013</b>	440	301	<b>741</b>
<b>2014</b>	452	581	<b>1,033</b>
<b>2015</b>	746	477	<b>1,223</b>
<b>2016</b>	378	376	<b>754</b>
<b>2017</b>	331	261	<b>592</b>
<b>2018</b>	682	535	<b>1,227</b>
<b>2019</b>	527	486	<b>1,013</b>

Thirty three (33) NOR (12 female/12 male/9 jack) and an additional 76 hatchery origin jack (HOR) spring Chinook have been taken upstream through September 2019.

By the end of September, 1,105 adult early-run coho (541 male/564 female) had been transported upstream along with 127 wild jacks (< 20 inches). During the month of September, 24 NOR coho that were PIT tagged in the upper basin had been detected as returning adults at the Merwin Adult Collection Facility. The majority of these coho (22/24) were tagged at the Swift FSC in the spring of 2018 and had returned as adults. The remaining two coho were tagged at the Swift FSC in the spring of 2019, and returned as jacks. One PIT tagged cutthroat trout was also collected at the Merwin Adult Collection Facility during the month of September. Historical PIT tag records indicate that this particular cutthroat has completed two upstream/downstream migration cycles on the Lewis River thus far, and is currently on its third upstream trip.

Additionally, two PIT tagged spring Chinook smolts were collected in the month of September at the Merwin Adult Collection Facility. These fish were originally tagged in the early spring at Rapid River Hatchery located near Riggins, Idaho.

#### **Swift Floating Surface Collector ([Attachment B](#))**

Record numbers of fish collected at the Swift FSC in spring 2019 with a total of 105,340 out-migrants along with an additional 4,404 planted rainbow trout, and 54 adult steelhead kelts collected by the time the FSC was shut down in late-July. The total number of out-migrants collected at the Swift FSC this spring has exceeded all other previous years of operation (i.e., since 2013) over this time period (January 1 to July 31; Table 3).

The Swift FSC was shut down for summer maintenance on July 22, 2019. It is anticipated that the Swift FSC will return to service in early-October.



**Table 3. Total number of out-migrating salmonids (by species) collected at the Swift FSC and transported downstream of Merwin Dam during the month of July since 2013.**

<b>Run Year</b>	<b>Collection Numbers by Run Year at Swift FSC</b>				
	<i>(From January 1 to July 31)</i>				
	Coho	Chinook	Steelhead	Cutthroat	<b>TOTAL</b>
<b>2013</b>	14,850	976	162	551	<b>16,539</b>
<b>2014</b>	7,645	905	513	853	<b>9,916</b>
<b>2015</b>	33,242	4,417	1,221	642	<b>39,522</b>
<b>2016</b>	59,734	3,422	2,167	1,052	<b>66,375</b>
<b>2017</b>	13,217	738	1,574	372	<b>15,901</b>
<b>2018</b>	38,914	4,564	7,877	844	<b>52,199</b>
<b>2019</b>	95,351	6,229	2,911	849	<b>105,340</b>

#### **Agenda items for November 14 2019**

- October 10, 2019 Meeting Notes
- In Lieu /ADR Update
- Flows/Reservoir Conditions Update
- Study/Work Product Update

*Adjourn 10:40am*

#### **Next Scheduled Meeting:**

November 14, 2019
Conference Call
9:00 a.m. – 10:30 a.m.

#### **Meeting Handouts & Attachments:**

- Meeting Notes from 9/12/19
- Agenda from 10/10/19
- **Attachment A** – Lewis River Aquatic Fund project images and comments, October 10, 2019
- **Attachment B** - Lewis River Fish Passage Report (September 2019)

# Lewis River 21 Phase III

## Legend

- Coho Redds 2012 - 2018
- Live Steelhead
- spring Chinook Redds 2018

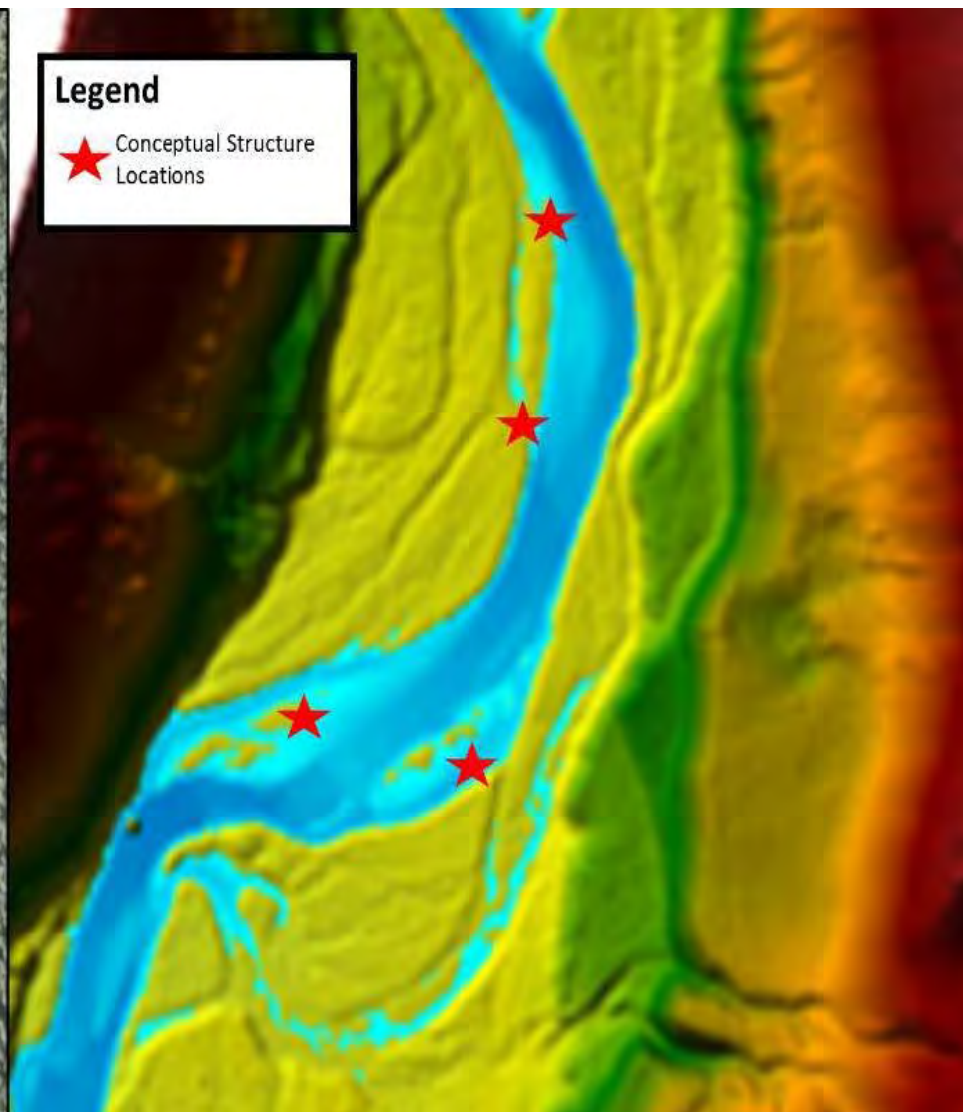
Google Earth

400 ft

N









## Rush Creek

### Legend

- ▣ Coho Redds 2012 - 2018
- Live Steelhead
- spring Chinook Redds 2018





# Chum Channel

\$175,000

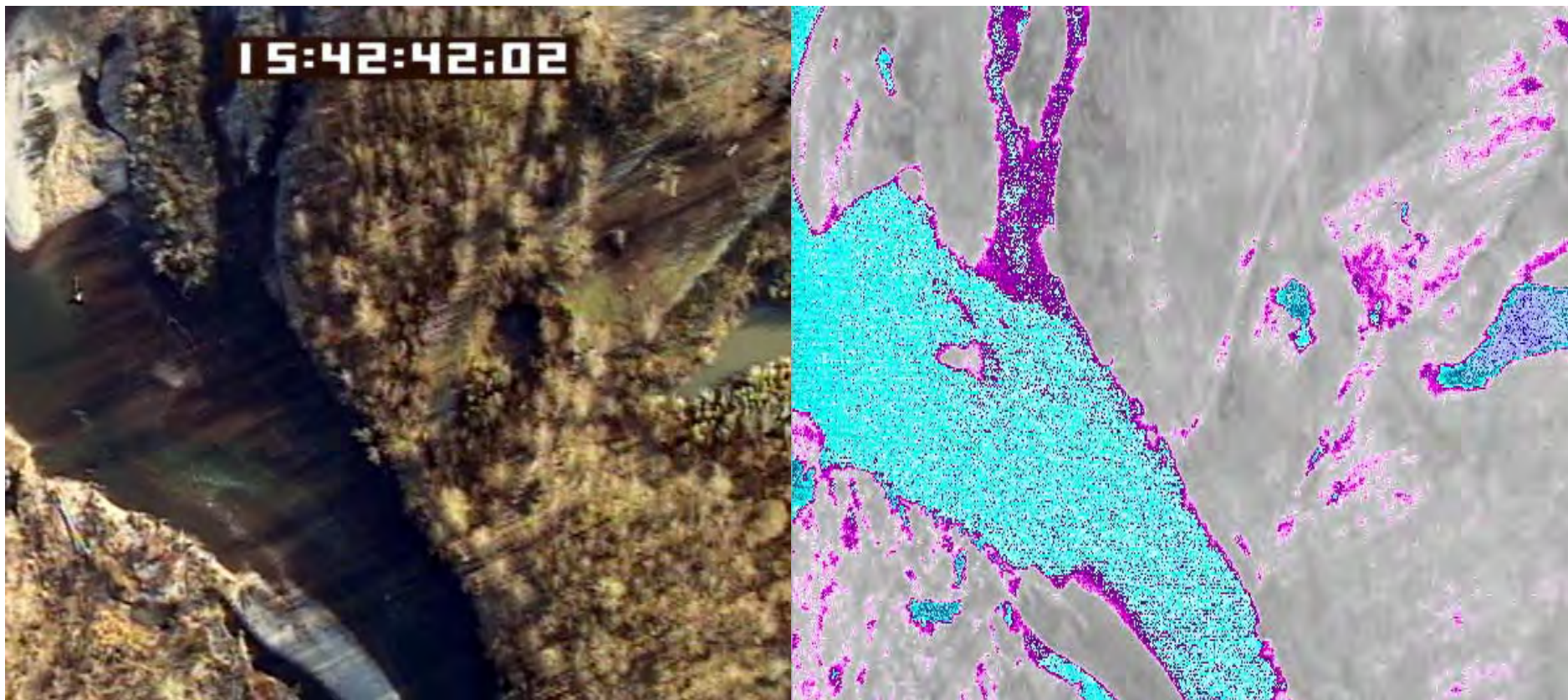


Google Earth

200 ft



# Chum Channel, FLIR Survey, March 22, 2000





# Cowlitz Conservation

Steelhead Redds 2009 - 2019  
\$254,000

Log Jams

Screw Trap Site  
(current)

Google Earth

800 ft





# EXISTING CONDITION





## Initial Review (Part A) Matrix

Lewis River 21 Phase III	Rush Creek Side Channel Reactivation	Eagle Island chum spawning channel construction	Anderson NF Lewis River Restoration
--------------------------	--------------------------------------	---	-------------------------------------

Applicant	GPNF	GPNF	WDFW	Cowlitz Cons.
Funding Request	\$227,000	\$130,000	\$175,000	\$254,000

UTILITIES	Meets	Meets	Meets	Meets
LCFRB	Meets	Meets	Meets	Meets
WDFW	Meets	Meets		Meets
USFWS				
NOAA	Meets	Meets	Meets	Meets
COWLITZ TRIBE	Meets	Meets	Meets	Meets
YAKAMA NATION				
FISH FIRST				
AMERICAN RIVERS				
TROUT UNLIMITED	Does not meet*	Meets	Meets	Meets
USFS / GPNF				

1. Benefit fish recovery throughout the North Fork Lewis River, priority to federal ESA-listed species
2. Support the re-introduction of anadromous fish throughout the Basin (this objective will not be evaluated for bull trout proposals)
3. Enhance fish habitat in the Lewis River Basin, with priority given to the North Fork Lewis River.
4. Requesting funding for a project that would otherwise be required by law or mitigation requirement?
5. Maintain consistency with applicable Federal, State, and local laws and, to the extent feasible, consistent with policies and comprehensive plans in effect at the time the project is proposed.

# ACC QUESTIONS

## Lewis River 21 Phase III

LCFRB	Unclear if this builds on previous phases I and II; if related, please show where other adjacent work has occurred.
LCFRB	Also helpful to show proximity of Little Creek by CIT.
LCFRB	SRP is high for WSH, medium for coho, and low for SpCH
LCFRB	Proposal appears to address the multi-species priority restoration needs, incl. OC and SC habitat, which are high.
LCFRB	12-14" DBH LWM seems small; how will naturally accumulated LWM be obtained?
LCFRB	Is there any concern with tipping over large cedars? Have these trees been identified already?
LCFRB	Dollar request seems odd, as the ACC request appears to be the exact amount as that included in the total project- \$227k vs. \$227k.
LCFRB	Would be helpful to see itemized budget detail.
LCFRB	Not sure if objectives are in line with other statements: 4 log complexes, and apex jam with addt'l LWM
LCFRB	Not a ton of detail; designs seem to be "typical"
LCFRB	Has fish stranding been considered for the side channels?
UTILITIES	Use of trees from immediate riparian area is probably not preferred. Swift Reservoir logs available? Effects to Little Creek spawning (see spawner redd distribution image).
TU	TU does not support USFS - Lewis River 21 Phase III. We believe it undermines ESA listed bull trout by providing increased benefit to bull trout competitors (coho, Chinook and steelhead) and is located too close to one of the only two identified bull trout spawning streams in the basin

## Rush Creek Side Channel Reactivation

LCFRB	Are these culverts required to be removed?
LCFRB	Is there enough flow for both channels to be watered up to avoid stranding, esp. for juveniles?
LCFRB	Are the roads being permanently decommissioned?
LCFRB	Are typicals appropriate?
LCFRB	Quick turnaround- can you get designs, permits, and “mobed” by July 16, 2020?
LCFRB	Would be helpful to include other projects in the general area, incl. proposed project, such as Lewis 21, phase III
UTILITIES	How does this affect flows in Rush Cr proper? What effect might this have on bull trout migration? 3145 feet of new stream habitat.

## Eagle Island chum spawning channel construction

LCFRB	Why is this so expensive?
LCFRB	Do you anticipate this being delayed further?
LCFRB	What maintenance is expected?
LCFRB	Consider adding other projects in the immediate vicinity
UTILITIES	Reference channel adjacent to this proposed channel. How has the other channel performed? How does this channel differ in objective? How will benefits be determined (very few chum salmon available). What are the plans to bring Chum to use the channel (hatchery?). Other grants have been secured, and permitting and logs secured. Funds are for construction only (20% of total construction costs). Where do monitoring funds come from?

## Anderson NF Lewis River Restoration

LCFRB	Better explain riparian plan and strategy
LCFRB	What is the certainty of obtaining a WDNR Aquatics lease?
LCFRB	Access appears to be pretty clear and relatively non-invasive. Is this true? Please show access points.
LCFRB	Based on the acreage, and lineal feet, the budget seems appropriate; however, a more detailed budget would be helpful
LCFRB	Reference to other projects is helpful, but Skamokawa and Monahan (I believe) don't seem to be good proxies. Design details would be helpful
LCFRB	Provide a more detailed explanation on how this project fits in with other projects in the area.
LCFRB	May be helpful to see if there are other release sites (other than the DS Woodland site) US of this project site.
UTILITIES	Limited benefits for fish recovery (benefit/cost), potential hazard for boating, landowner benefit
UTILITIES	More clarity and definition of "margin structures" and how these are designed and function

# Lewis River Fish Passage Report

September 2019

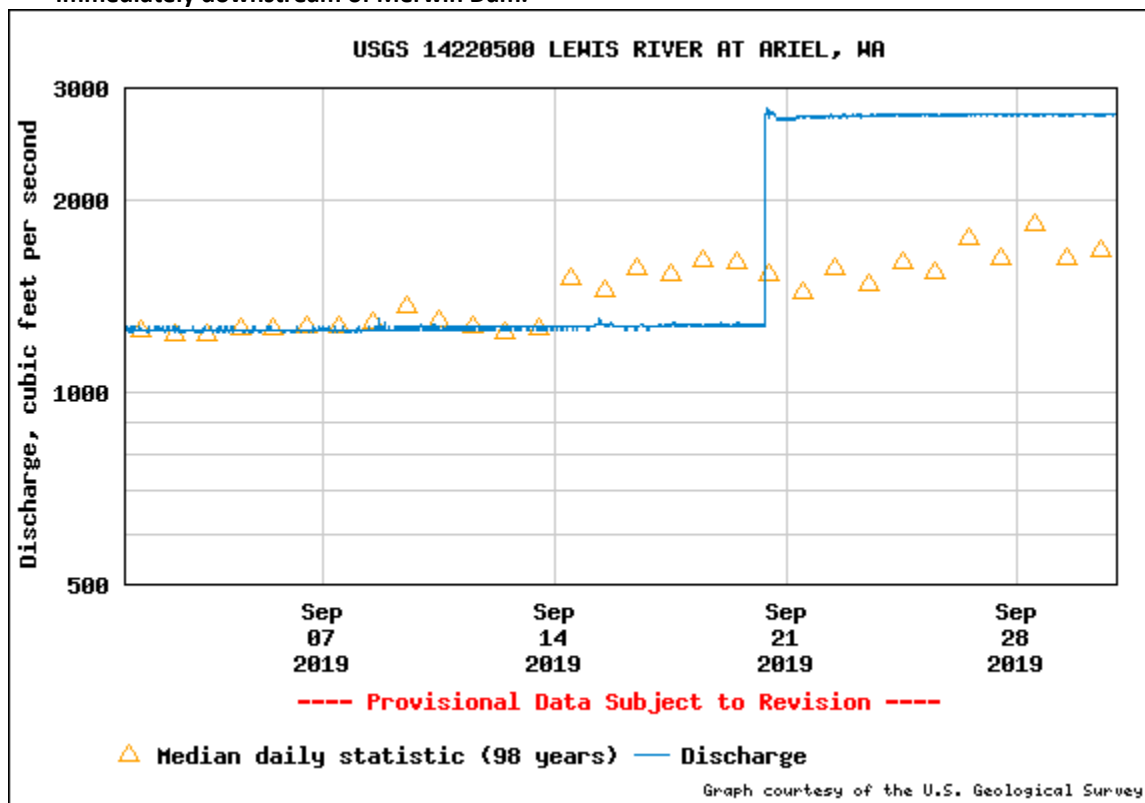
## Merwin Fish Collection Facility and General Operations

During the month of September, a total of 1,665 fish were captured at the Merwin Dam Adult Fish Collection Facility. The majority of these fish were early-run coho (73.5%).

The Merwin Dam Fish Collection Facility ran continuously during the month of September.

River flow below Merwin Dam was maintained at approximately 1,250 cfs from September 1-19. River flow then increased to approximately 2,750 cfs, where it remained for the remainder of the month (Table 1).

**Table 1. Discharge in cubic feet per second recorded at the USGS Ariel, WA gauge (14220500) located immediately downstream of Merwin Dam.**



## **Upstream Transport**

Eight (8) Blank Wire Tag (BWT) winter steelhead were captured by the end of December 2018 and were transported upstream as part of the 2019 run year. An additional 38 adults were taken upstream in January 2019 and another 30 in February, 106 in March, 705 in April, 110 in May, and 4 in June for a total of 1,001 BWT winter steelhead transported as part of the 2019 run year. Twelve (12) additional winter steelhead of natural origin (NOR) containing PIT tags from the upper basin were also transported upstream as part of the 2019 run year. A combined total of 1,013 adult winter steelhead have been transported upstream of Swift Dam as part of the 2019 run year (Table 2).

**Table 2. Total number of adult winter steelhead transported upstream of Swift Dam in 2019.**

<b>Run Year</b>	<b>Male</b>	<b>Female</b>	<b>Total adult winter steelhead taken upstream of Swift Dam</b>
<b>2012</b>	141	48	<b>189</b>
<b>2013</b>	440	301	<b>741</b>
<b>2014</b>	452	581	<b>1,033</b>
<b>2015</b>	746	477	<b>1,223</b>
<b>2016</b>	378	376	<b>754</b>
<b>2017</b>	331	261	<b>592</b>
<b>2018</b>	682	535	<b>1,227</b>
<b>2019</b>	527	486	<b>1,013</b>

Thirty three (33) NOR (12 female/12 male/9 jack) and an additional 76 hatchery origin jack (HOR) spring Chinook have been taken upstream through September 2019.

By the end of September, 1,105 adult early-run coho (541 male/564 female) had been transported upstream along with 127 wild jacks (< 20 inches). During the month of September, 24 NOR coho that were PIT tagged in the upper basin had been detected as returning adults at the Merwin Adult Collection Facility. The majority of these coho (22/24) were tagged at the Swift FSC in the spring of 2018 and had returned as adults. The remaining two coho were tagged at the Swift FSC in the spring of 2019, and returned as jacks. One PIT tagged cutthroat trout was also collected at the Merwin Adult Collection Facility during the month of September. Historical PIT tag records indicate that this particular cutthroat has completed two upstream/downstream migration cycles on the Lewis River thus far, and is currently on its third upstream trip.



Additionally, two PIT tagged spring Chinook smolts were collected in the month of September at the Merwin Adult Collection Facility. These fish were originally tagged in the early spring at Rapid River Hatchery located near Riggins, Idaho.

### **Floating Surface Collector (FSC)**

Record numbers of fish collected at the Swift FSC in spring 2019 with a total of 105,340 out-migrants along with an additional 4,404 planted rainbow trout, and 54 adult steelhead kelts collected by the time the FSC was shut down in late-July. The total number of out-migrants collected at the Swift FSC this spring has exceeded all other previous years of operation (i.e., since 2013) over this time period (January 1 to July 31; Table 3).

The Swift FSC was shut down for summer maintenance on July 22, 2019. It is anticipated that the Swift FSC will return to service in early-October.

**Table 3. Total number of out-migrating salmonids (by species) collected at the Swift FSC and transported downstream of Merwin Dam during the month of July since 2013.**

<b>Run Year</b>	<b>Collection Numbers by Run Year at Swift FSC</b>				
	<i>(From January 1 to July 31)</i>				
	Coho	Chinook	Steelhead	Cutthroat	<b>TOTAL</b>
<b>2013</b>	14,850	976	162	551	<b>16,539</b>
<b>2014</b>	7,645	905	513	853	<b>9,916</b>
<b>2015</b>	33,242	4,417	1,221	642	<b>39,522</b>
<b>2016</b>	59,734	3,422	2,167	1,052	<b>66,375</b>
<b>2017</b>	13,217	738	1,574	372	<b>15,901</b>
<b>2018</b>	38,914	4,564	7,877	844	<b>52,199</b>
<b>2019</b>	95,351	6,229	2,911	849	<b>105,340</b>

[illegible]

<sup>1</sup> Only hatchery verses wild distinctions are currently being made. All hatchery fish are labeled as "AD-Clip".

**Fish Facility Report**  
**Swift Floating Surface Collector**  
**September 2019**

Day	Coho			Chinook			Steelhead				Cutthroat			Bull Trout	Planted Rainbow	Total
	fry	parr	smolt	fry	parr	smolt	fry	parr	smolt	kelt	fry	< 13 in	> 13 in			
01																0
02																0
03																0
04																0
05																0
06																0
07																0
08																0
09																0
10																0
11																0
12																0
13																0
14																0
15																0
16																0
17																0
18																0
19																0
20																0
21																0
22																0
23																0
24																0
25																0
26																0
27																0
28																0
29																0
30																0

Monthly	0	0	0	0	0	0	0	0	0	0	0	0	0	0	0	0
Total	2766	2772	89813	64	2567	3598	7	56	2848	54	0	806	43	2	4404	109800

