

**Lewis River Hydroelectric Projects Settlement Agreement  
Aquatic Coordination Committee (ACC)  
Meeting Agenda**

**Date & Time:** Thursday, December 10, 2015  
9:00 a.m. – 3:00 p.m.

**Place:** Merwin Hydro Control Center  
105 Merwin Village Court  
Ariel, WA 98603

**Contacts:** Frank Shrier: (503) 320-7423

<b>Time</b>	<b>Discussion Item</b>
9:00 a.m.	Welcome <ul style="list-style-type: none"> <li>➤ Review Agenda and ACC 11/12/15 Meeting Notes</li> <li>➤ Comment &amp; Accept Agenda and 11/12/15 Meeting Notes</li> </ul>
9:10 a.m.	Public Comment Opportunity
9:20 a.m.	M&E Update
<b>10:00 a.m.</b>	<b>Break</b>
10:15 a.m.	Boat radio telemetry survey on Swift 11/13/15 Update
10:45 a.m.	Study/Work Product Updates <ul style="list-style-type: none"> <li>○ 2016/2017 Aquatic Fund Process Update</li> <li>○ Smolt releases at LRH; first pass water and release options</li> <li>○ Woodland Release Ponds - Status</li> <li>○ Acclimation Ponds - Status</li> <li>○ Merwin Upstream Passage – Status</li> <li>○ Swift Floating Surface Collector – Status</li> </ul>
11:15 a.m.	<ul style="list-style-type: none"> <li>➤ Next Meeting’s Agenda</li> <li>➤ Public Comment Opportunity</li> </ul> Note: all meeting notes and the meeting schedule can be located at: <a href="http://www.pacificorp.com/es/hydro/hl/lr.html#">http://www.pacificorp.com/es/hydro/hl/lr.html#</a>
<b>12:00 p.m.</b>	<b>Working Lunch/Adjourn ACC Meeting</b>
12:30 p.m.	Monitoring and Evaluation (M&E) Subgroup <ul style="list-style-type: none"> <li>○ Ongoing discussion by section; Ocean recruits</li> </ul>
<b>3:00 p.m.</b>	<b>Adjourn M&amp;E Subgroup Meeting</b>

Join by Phone

+1 (503) 813-5252 [Portland, Ore.]

+1 (855) 499-5252 [Toll Free]

**Conference ID: 5687805**

**FINAL Meeting Notes**  
**Lewis River License Implementation**  
**Aquatic Coordination Committee (ACC) Meeting**  
**December 10, 2015**  
**Conference Call**

**ACC Participants Present (8)**

Chris Karchesky, PacifiCorp  
 Frank Shrier, PacifiCorp  
 Erik Lesko, PacifiCorp  
 Baker Holden, USDA Forest Service  
 Aaron Roberts, WDFW  
 Pat Frazier, WDFW  
 Michelle Day, NMFS

**Guests**

Al Thomas, Columbian

**Calendar:**

January 7, 2015	ACC Meeting (Aquatic Fund Subgroup)	Merwin Hydro
January 14, 2015	ACC Meeting	Merwin Hydro

<b>Assignments from December 10, 2015</b>	<b>Status</b>
Frazier: Advise Shrier of available dates specific to the EDT subgroup meetings in January and February 2016.	<b>February date pending</b>

<b>Assignments from February 13, 2014 meeting (revised 9/10/15)</b>	<b>Status</b>
Kinne: Work on securing the 2012, 2013 and 2014 lower river coho abundance survey data for tributaries. Provide this information to Erik Lesko (PacifiCorp).	<b>Pending as of 1/14/16 (Frazier noted he is working to get this done by February 2016 meeting)</b>

**Opening, Review of Agenda and Meeting Notes**

Frank Shrier (PacifiCorp) called the meeting to order at 9:15 a.m. and reviewed the agenda and assignments.

The November 12, 2015 meeting notes were reviewed and approved with without changes at 9:20am.

**Public Comment**

None

## Flow Conditions

Shrier informed the attendees that this latest storm event rivaled 2006 but not the same effects due to the lack of snow pack in 2015.

June Lake (3,400') since December 6, 2015 there was 16.7" rain fall at this site. The majority received was on December 8, 2015 (8"). There have been 1-2 major slides in the upper basin which resulting in large amounts of debris drift in the reservoirs. The log boom failed as an unknown individual disconnected it. PacifiCorp connect it to a bigger anchor at the time; but the boom has failed. Debris is floating freely to the floating surface collector. PacifiCorp has deployed crews to corral the debris. PacifiCorp is currently spilling at all three (3) projects as follows:

Swift	10,000 cfs
Yale	20,000 cfs
Merwin	19,000 cfs

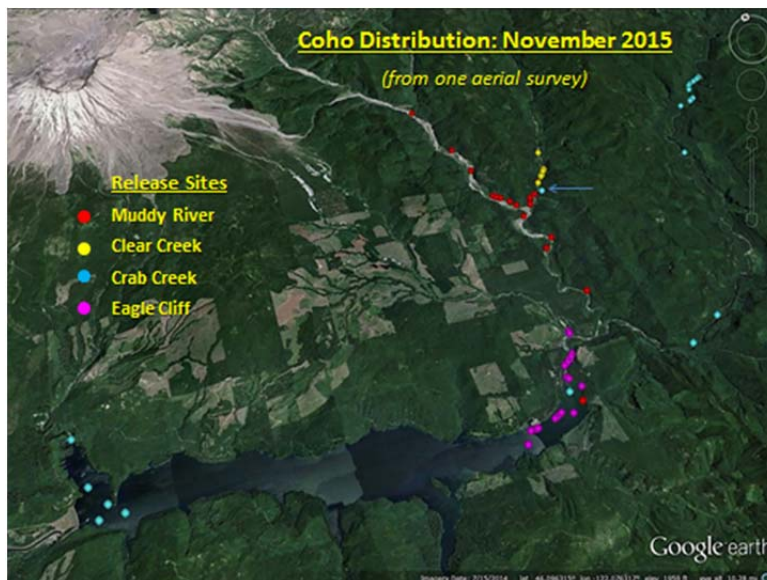
On December 9, 2015 inflow at Merwin hit 90,000 cfs and 45,000 cfs at Swift. Projected rainfall over the next 5-6 days is about 5".

The upstream fish release pipe located at Eagle Cliff was compromised and a portion of the pipe has been lost. PacifiCorp priority is getting the log boom reconnected.

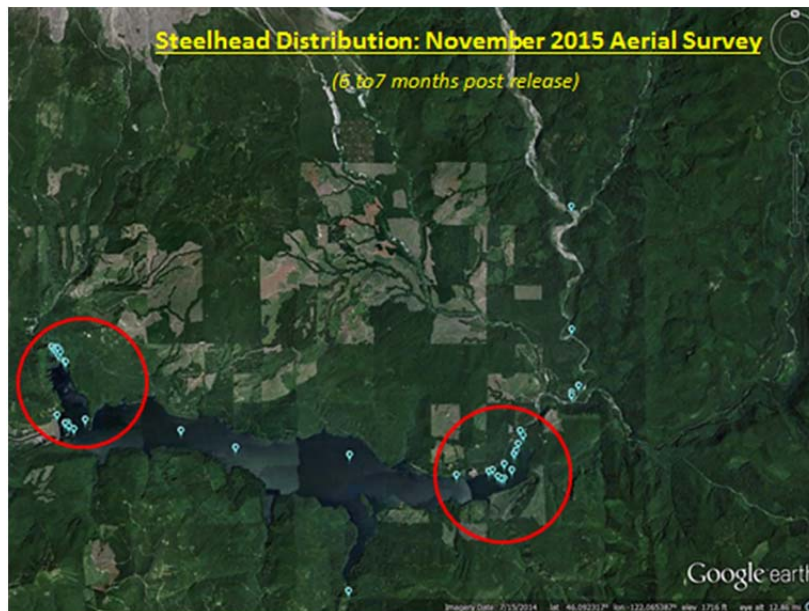
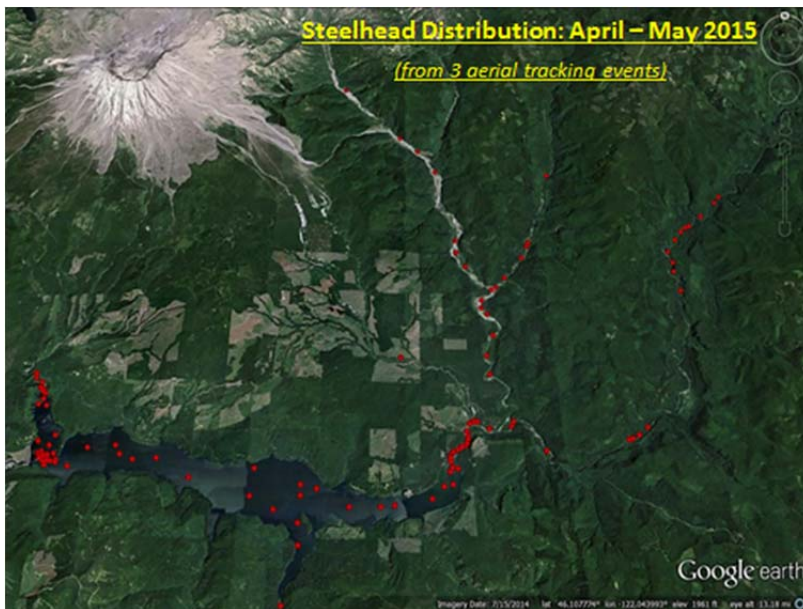
There is currently 34' storage at the reservoirs.

## Boat Radio Telemetry Survey on Swift; November 13, 2015 Update

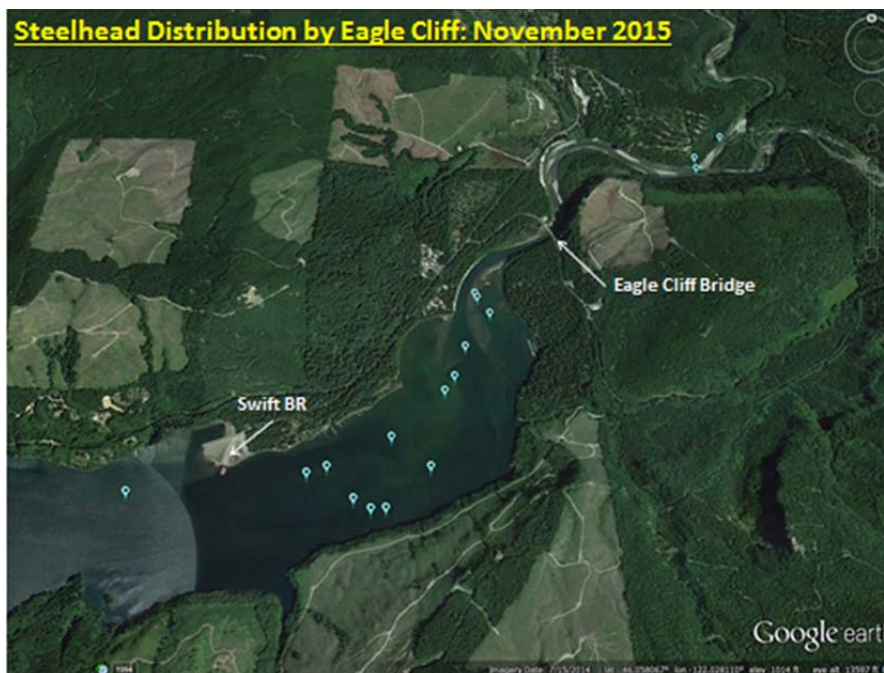
Erik Lesko (PacifiCorp) provided the slides below for the ACC review. As illustrated by the coho distribution: November 2015 the coho are generally staying where they are released. There was one coho released at Crab Creek that migrated into Clear Creek (Muddy R system) and several coho released at the Muddy River bridge migrated upstream 3 to 4 miles. A female was detected later at the floating surface collector. Another flight is scheduled for the week of December 14, 2015.



Also provided below for ACC review is the steelhead distribution April – May 2015 and November 2015 (see slides below): The April to May slide represents steelhead distribution during the spring of 2015. The following slide represents the distribution of those same radio tagged steelhead in November 2015. Nearly all steelhead migrated to Swift Reservoir and generally are located in two areas: Swift Creek Cove and the headwater area of the reservoir just downstream of Eagle Cliff (last two slides). Surveys in the spring of 2016 will continue to track these fish and note if these fish are migrating upstream (repeat spawners).







**M&E Update**

Shrier informed the ACC attendees that a subgroup is needed to review the EDT updates. Two meetings are requested; the initial to take place in the 3<sup>rd</sup> or 4<sup>th</sup> week of January, 2016 followed by a second meeting in mid-February 2016.

Pat Frazier (WDFW) indicated that he will get back to Shrier on a best date for WDFW internal parties, particularly those with on-the-ground knowledge.

Michelle Day (NMFS) indicated that she will decide if she can participate as a subgroup member once WDFW advises the available dates.

Baker Holden (WDFW) will also be a member of the subgroup.

### **Study/Work Product Updates**

#### **Smolt releases at LRH; first pass water and release options**

No updates from WDFW.

#### **2016/2017 Aquatic Fund Update**

The subgroup met in November and the focus is on available evaluation tools for both the proposers and the reviewers. Changes/updates are being made to the existing Habitat Synthesis Matrix. The subgroup is meeting again on January 7, 2016.

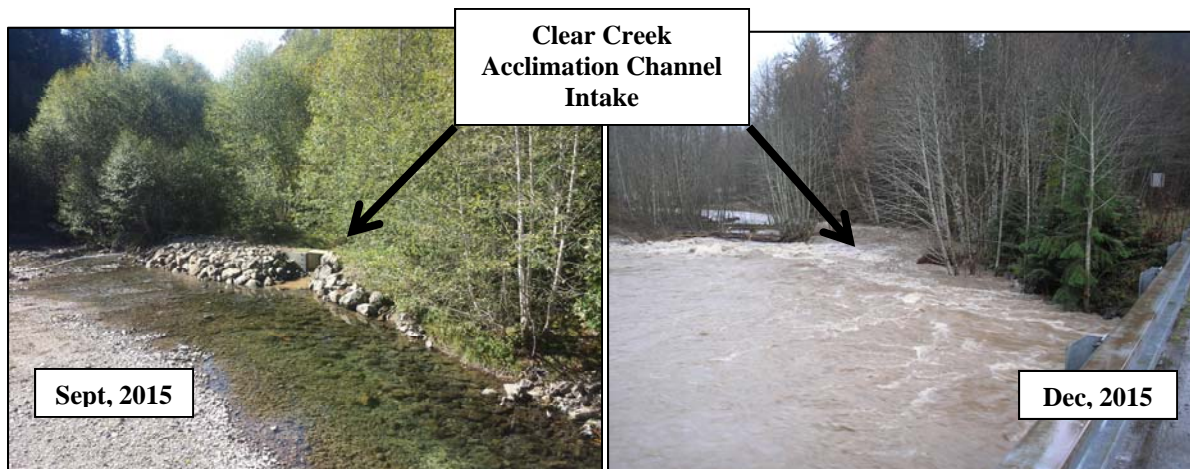
#### **Woodland Release Ponds**

PacifiCorp continues to work through the process to give all permits to DNR; waiting for the City of Woodland response on the submitted permit documents; may get their response this month.

Once DNR receives PacifiCorp's permit application a public review process of 30 days is needed before the documents go to their board.

#### **Acclimation Pond/Crab Creek**

Everything is underwater right now; PacifiCorp was informed that at the Clear Creek site there is a nice big side channel (see picture below); we will wait to see what happens after the flood waters subside.



#### **Upstream Passage**

Daily operation of the Merwin Trap was suspended temporarily on 12/7/2015 due to high river flow. Karchesky (PacifiCorp) expressed that the trap will be put back into service once river flow falls below the maximum design capacity of 14,800 cfs for safe operation. Until then, PacifiCorp will be working with Lewis River Hatchery staff to maintain the upstream transport schedule for adult coho salmon.

#### **Merwin Fish Collection Facility and General Operations ([Attachment A](#))**

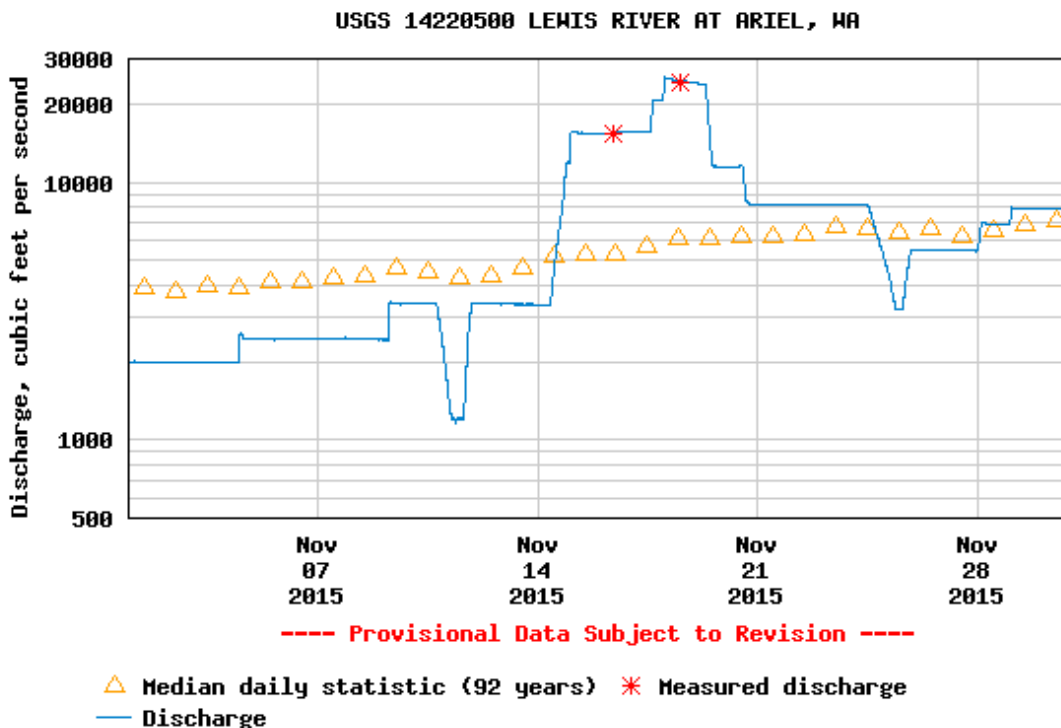
Karchesky (PacifiCorp) reported during the month of November, a total 1,852 fish were captured at the Merwin Fish Collection Facility; the majority (82%) of these fish were late run coho (n=1,519) followed by hatchery winter steelhead (n=124). All hatchery summer and winter

steelhead, hatchery fall Chinook, and hatchery coho jacks were given to Washington Department of Fish and Wildlife. WDFW also retrieved 489 of 1,379 hatchery adult coho and 23 of 32 wild adult and jack coho for brood stock. Five wild summer steelhead, 35 wild fall Chinook, and 11 resident rainbow trout less than twenty inches were captured at Merwin trap and returned downstream. Sixteen (16) derby trout from Merwin reservoir were captured at Merwin trap post spill event and given to WDFW. Eight hundred seventy-nine adult hatchery coho, nine wild coho (adults: 6, jacks: 3), and eight cutthroat trout greater than thirteen inches were captured at Merwin trap and transported upstream of Swift dam. Eleven hatchery coho were radio tagged and returned downstream as part of the Merwin Trap Efficiency Study.

Operations at the Merwin Trap were previously suspended on November 16, 2015 through November 19, 2015 during a high flow/spill event. The Merwin trap was put back into service November 19, 2015 when flows met the criteria for safe trap operation. The Merwin trap was also suspended on November 22, 2015 due to high water. The Merwin trap was put back into service on November 23, 2015. The Auxiliary Water Supply (AWS) system, which can boost attraction flow up to 400 cfs, was operated daily in exception to high water events during peak spill at Merwin Dam.

River flow below Merwin Dam ranged between approximately 1,970 cfs to 25,500 cfs during November.

## Discharge, cubic feet per second



### Upstream Transport ([Attachment A](#))

To date, 1,218 (741 m: 477 f) BWT winter steelhead have been transported and released upstream of Swift Reservoir (27 of which were captured via tangle net in the lower river as part of the Hatchery and Supplementation Plan Monitoring). In addition, 3,310 (1,851 m: 1,432 f: 27 j) coho (2,124 of which were captured at Lewis River Fish Hatchery) and 27 coastal cutthroat trout exceeding thirteen inches have been transported upstream of Swift Reservoir this year.

**Swift Floating Surface Collector (Attachment A)**

A total of 3,542 juvenile fish were collected during the month of November and 3,507 target species (>60mm) were transported downstream. The majority (84 percent) of these fish were coho (n=2,992), followed by spring Chinook (n=385), cutthroat (n=93), steelhead (n=66), planted rainbow (n=4), and bull trout (n=2). All salmonid fry, planted rainbow, and bull trout were returned to Swift Reservoir. To date, 45,173 fish have been captured at the FSC and a total of 37,447 target species (>60mm) have been transported below Merwin Dam.

The Swift FSC was suspended the night of November 17, 2015 due to a power outage and returned back to service on November 18, 2015. The FSC was again taken out of service on 12/8/15 due to high water conditions at Swift Reservoir that resulted in lowering the barrier net and allowing spill to occur.

*< Meeting adjourned at 10:00 a.m. >*

**Agenda items for January 14, 2016**

- December 10, 2015 Meeting Notes
- M&E Update
- 2015 Year-end Financial Reporting
- 2016/2017 Aquatic Fund Process Update
- Study/Work Product Updates

**Next Scheduled Meetings:**

January 7, 2016	January 14, 2016
Aquatic Fund Subgroup (HCC)	Merwin Hydro Control Center (HCC)
Ariel, WA	Ariel, WA
12:00 p.m. –3:00 p.m.	9:00 a.m. – 3:00 p.m.

**Meeting Handouts & Attachments:**

- Meeting Notes from 11/12/15
- Agenda from 12/10/15
- **Attachment A** - Lewis River Fish Passage Report (November 2015)



# Lewis River Fish Passage Report

## November 2015

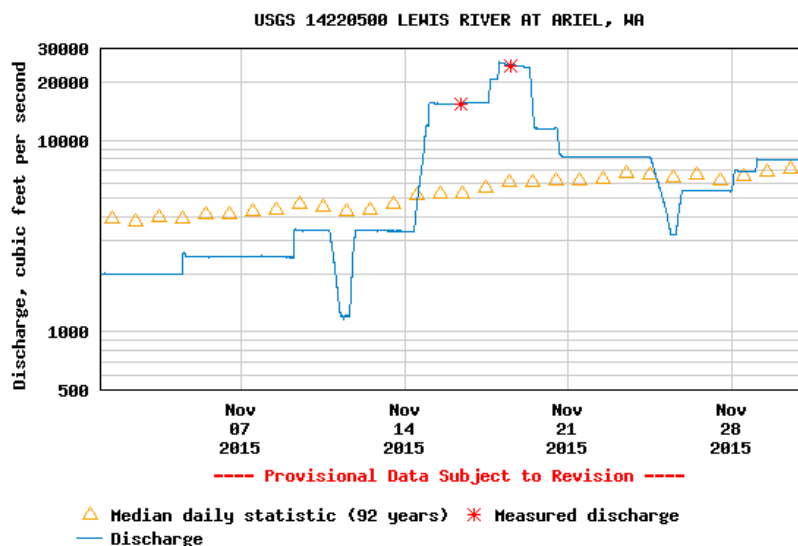
### Merwin Fish Collection Facility and General Operations

During the month of November, a total 1,852 fish were captured at the Merwin Fish Collection Facility; the majority (82%) of these fish were late run coho (n=1,519) followed by hatchery winter steelhead (n=124). All hatchery summer and winter steelhead, hatchery fall Chinook, and hatchery coho jacks were given to Washington Department of Fish and Wildlife. WDFW also retrieved 489 of 1,379 hatchery adult coho and 23 of 32 wild adult and jack coho for brood stock. Five wild summer steelhead, 35 wild fall Chinook, and 11 resident rainbow trout less than twenty inches were captured at Merwin trap and returned downstream. Sixteen derby trout from Merwin reservoir were captured at Merwin trap post spill event and given to WDFW. Eight hundred seventy-nine adult hatchery coho, nine wild coho (adults: 6, jacks: 3), and eight cutthroat trout greater than thirteen inches were captured at Merwin trap and transported upstream of Swift dam. Eleven hatchery coho were radio tagged and returned downstream as part of the Merwin Trap Efficiency Study.

Operations at the Merwin trap were suspended on November 16, 2015 through November 19, 2015 during a high flow/spill event. The Merwin trap was put back into service November 19, 2015 when flows met the criteria for safe trap operation. The Merwin trap was also suspended on November 22, 2015 due to high water. The Merwin trap was put back into service on November 23, 2015. The Auxiliary Water Supply (AWS) system, which can boost attraction flow up to 400 cfs, was operated daily in exception to high water events during peak spill at Merwin Dam.

River flow below Merwin Dam ranged between approximately 1,970 cfs to 25,500 cfs during November.

### Discharge, cubic feet per second



### **Upstream Transport**

To date, 1,218 (741 m: 477 f) BWT winter steelhead have been transported and released upstream of Swift Reservoir (27 of which were captured via tangle net in the lower river as part of the Hatchery and Supplementation Plan Monitoring). In addition, 3,310 (1,851 m: 1,432 f: 27 j) coho (2,124 of which were captured at Lewis River Fish Hatchery) and 27 coastal cutthroat trout exceeding thirteen inches have been transported upstream of Swift Reservoir this year.

### **Swift Floating Surface Collector**

A total of 3,542 juvenile fish were collected during the month of November and 3,507 target species (>60mm) were transported downstream. The majority (84 percent) of these fish were coho (n=2,992), followed by spring Chinook (n=385), cutthroat (n=93), steelhead (n=66), planted rainbow (n=4), and bull trout (n=2). All salmonid fry, planted rainbow, and bull trout were returned to Swift Reservoir. The FSC was suspended the night of November 17, 2015 due to a power outage and returned back to service on November 18, 2015. To date, 45,173 fish have been captured at the FSC and a total of 37,447 target species (>60mm) have been transported below Merwin Dam.



**Fish Facility Report**  
**Swift Floating Surface Collector**  
**November 2015**

Day	Coho			Chinook			Steelhead				Cutthroat			Bull Trout			Planted Rainbow	Total
	fry	parr	smolt	fry	parr	smolt	fry	parr	smolt	kelt	fry	< 13 in	> 13 in	fry	< 13 in	> 13 in		
01	15	31	4	0	1	1	0	0	0	0	0	3	0	0	0	0	0	55
02	0	13	50	0	0	10	0	0	0	0	0	0	0	0	0	0	0	73
03	0	40	47	0	0	0	2	0	9	0	0	0	0	0	0	0	0	98
04	0	142	61	0	1	30	0	0	6	0	1	1	0	0	0	1	0	243
05	0	101	48	0	1	4	0	0	3	0	0	1	0	0	0	0	0	158
06	0	83	88	0	0	33	1	0	2	0	0	3	0	0	0	0	0	210
07	0	123	13	0	0	9	0	0	1	0	0	2	0	0	0	0	0	148
08	0	81	13	0	0	10	0	0	0	0	0	1	0	0	0	0	0	105
09	0	27	30	0	0	10	0	1	1	0	0	2	0	0	0	1	0	72
10	0	13	12	0	1	7	0	0	1	0	0	0	0	0	0	0	0	34
11	0	29	20	0	0	9	0	0	2	0	0	0	0	0	0	0	0	60
12	0	26	38	0	0	12	0	0	2	0	0	0	0	0	0	0	0	78
13	0	8	49	0	0	8	0	0	1	0	0	1	0	0	0	0	0	67
14	7	13	29	0	0	12	0	0	1	0	0	0	0	0	0	0	0	62
15	0	18	32	0	0	14	0	1	2	0	0	0	0	0	0	0	0	67
16	0	53	19	0	0	19	0	0	2	0	0	5	0	0	0	0	0	98
17	0	69	49	0	1	12	0	0	1	0	0	2	0	0	0	0	0	134
18																		
19	0	125	80	0	0	16	0	5	0	0	0	7	0	0	0	0	1	234
20	0	76	55	0	0	19	0	1	1	0	0	10	0	0	0	0	0	162
21	0	25	215	0	0	24	0	0	2	0	0	2	0	0	0	0	0	268
22	0	131	124	0	0	15	0	3	1	0	0	7	0	0	0	0	1	282
23	0	173	76	0	0	49	0	0	2	0	2	12	0	0	0	0	0	314
24	0	9	27	0	0	8	0	0	0	0	0	5	0	0	0	0	0	49
25	0	8	9	0	0	5	0	0	0	0	0	3	0	0	0	0	0	25
26	1	20	29	0	0	6	0	0	0	0	0	1	0	0	0	0	0	57
27	0	18	40	0	0	7	0	0	3	0	0	3	0	0	0	0	0	71
28	0	49	25	0	2	1	0	1	0	0	0	5	0	0	0	0	2	85
29	0	46	21	0	0	4	0	0	5	0	0	2	0	0	0	0	0	78
30	0	80	36	0	0	24	0	0	3	0	0	12	0	0	0	0	0	155
<b>Monthly</b>	<b>23</b>	<b>1630</b>	<b>1339</b>	<b>0</b>	<b>7</b>	<b>378</b>	<b>3</b>	<b>12</b>	<b>51</b>	<b>0</b>	<b>3</b>	<b>90</b>	<b>0</b>	<b>0</b>	<b>0</b>	<b>2</b>	<b>4</b>	<b>3542</b>
<b>Annual</b>	<b>5848</b>	<b>5884</b>	<b>24617</b>	<b>0</b>	<b>207</b>	<b>4686</b>	<b>3</b>	<b>36</b>	<b>1255</b>	<b>31</b>	<b>4</b>	<b>684</b>	<b>48</b>	<b>0</b>	<b>15</b>	<b>4</b>	<b>1852</b>	<b>45173</b>