

PRE- PROPOSAL FORM -

1. Applicant organization.

USDA Forest Service
Gifford Pinchot National Forest

2. Organization purpose

Resource management agency

3. Project manager (name, address, telephone, email, fax).

Adam Haspiel
Mount St. Helens National Volcanic Monument
42218 NE Yale Bridge Road
Amboy, WA 98601
360-449-7833
360-449-7801-FAX
ahaspiel@fs.fed.us e-mail

Fishery Biologist

25+ years experience with fish habitat restoration projects

4. Project Title

Clear Creek Instream Habitat Restoration

5. Summary of Project proposal

This project would install large woody material (LWM) in Clearwater Creek starting from the mouth upstream to a large log jam at River Mile 1.7.

A stream survey conducted in 2004 by USFS Fish technicians identified the lower 1.7 miles of Clearwater Creek as being deficient in Large Woody Material (LWM). Field reconnaissance of the proposed project area was conducted by USFS Fish Biologist Adam Haspiel and USFS Fish Technician Bryce Michaelis on October 14, 2011 and minimal instream wood was observed.

Approximately 40 locations were identified that could be enhanced by additions of LWM. Approximately 800 pieces of LWM would be installed. Most of the wood for this project will come from USFS Peppercat Timber Sale, most of the wood will have rootwads attached, some supplemental wood may come from Swift Reservoir cleaning operations. Two existing side channels are included in the project proposal that will also have LWM placed instream.

There is also an opportunity to treat invasive weeds in the area as we rehabilitate access roads and sites.

Priority 1: *Benefit fish recovery throughout the North Fork Lewis River, with priority to federal ESA-listed species.*

This project benefits fish recovery in the basin by restoring and enhancing fish habitat. This project will increase overwintering habitat and summer rearing habitat for juvenile coho salmon and steelhead trout and possibly Chinook salmon. In addition, spawning areas will be associated with the log complexes.

Chinook are listed as a threatened species under the ESA.

Steelhead trout are listed as a threatened species under the ESA.

Coho Salmon are listed as a threatened species under the ESA.

Bull trout are listed as a threatened species under the ESA.

Priority 2: Support the reintroduction of anadromous fish throughout the basin.

LWM will increase pools, providing overwintering and summer rearing opportunities for juveniles, and enhanced spawning opportunities for adult anadromous fish. This project will increase the chances for success when anadromous fish are reintroduced into the basin. Several coho test redds were observed in this creek during the October 2011 reconnaissance.

Priority 3: Enhance fish habitat in the Lewis River Basin-, with priority given to the North Fork Lewis River.

LWM will directly enhance and increase fish habitat in the North Fork Lewis River Basin for re-introduced anadromous fish.

6. Project location (including River/Stream and Lat/Long coordinates if available).
Clearwater Creek- RM 0.0 to RM 1.7.

7. Expected products and results

Each structure should create a pool capable of rearing a combination of juvenile coho and Chinook salmon and steelhead trout. Spawning habitat will be created in pool tailouts.

8. Benefits of proposed Project

The project will benefit anadromous fish by increasing rearing and spawning habitat, and protecting stream banks. Side channel habitat will be improved.

9. Project partners and roles. Potential Partners include: Fish First, Washington Department of Fish and Wildlife, Equipment Rental Services, Mt. St. Helens Institute. Potential Funding sources include Whole Watershed Joint Venture Fund.

10. Community involvement (to date and planned).

The Forest Service maintains active community involvement by scheduling regular events with legislators, scientists, members, and key individuals for continual program and project development along with cultivating strong ties with agencies, academia, and local citizen groups. The Mt. St. Helens Institutes Youth Stream Team will be involved in the monitoring process.

11. Procedure for monitoring and reporting on results.

This project will be monitored by taking pre and post project cross sections, pebble counts, snorkel counts and spawning surveys. Monitoring will be conducted in partnership with Mt. St. Helens Institute Youth Stream Team.

12. Project schedule (anticipated start date, major milestones, completion date).
The NEPA for this project not been started yet.

NEPA- Summer 2012 /Winter 2013
Project implementation July 2013
Pre-project monitoring 2012
Post project monitoring 2013 and beyond.

13. Funding requested (estimated cost for project design, permitting (including necessary resource surveys), construction, and monitoring).

Requesting a total of \$128K as a cost share portion for project implementation and monitoring.

NEPA cost- 8K
Project preparation and implementation-120K

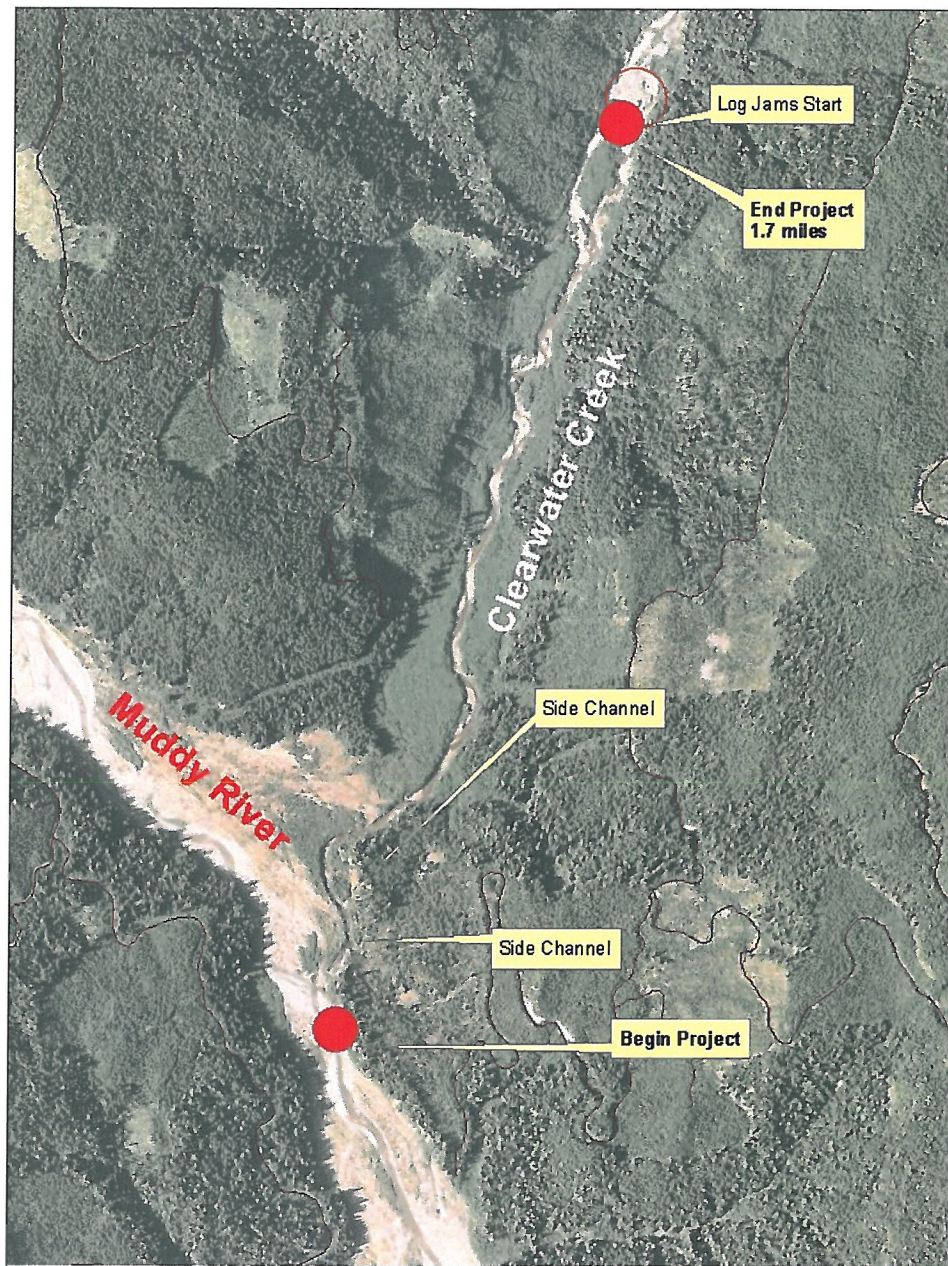
14. Type and source of other contributions (Identify cash (C) and/or in-kind (IK), and status, pending (P) or confirmed (Co)).

Gifford Pinchot National Forest	\$15,000 (IK)	(Co)
Materials from USFS	\$120,000 (IK)	(Co)
Mt St Helens Institute	\$3,000 (IK)	(Co)

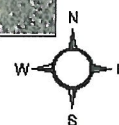
15. If you have technical assistance needs for this project, please briefly describe such needs.

None Needed

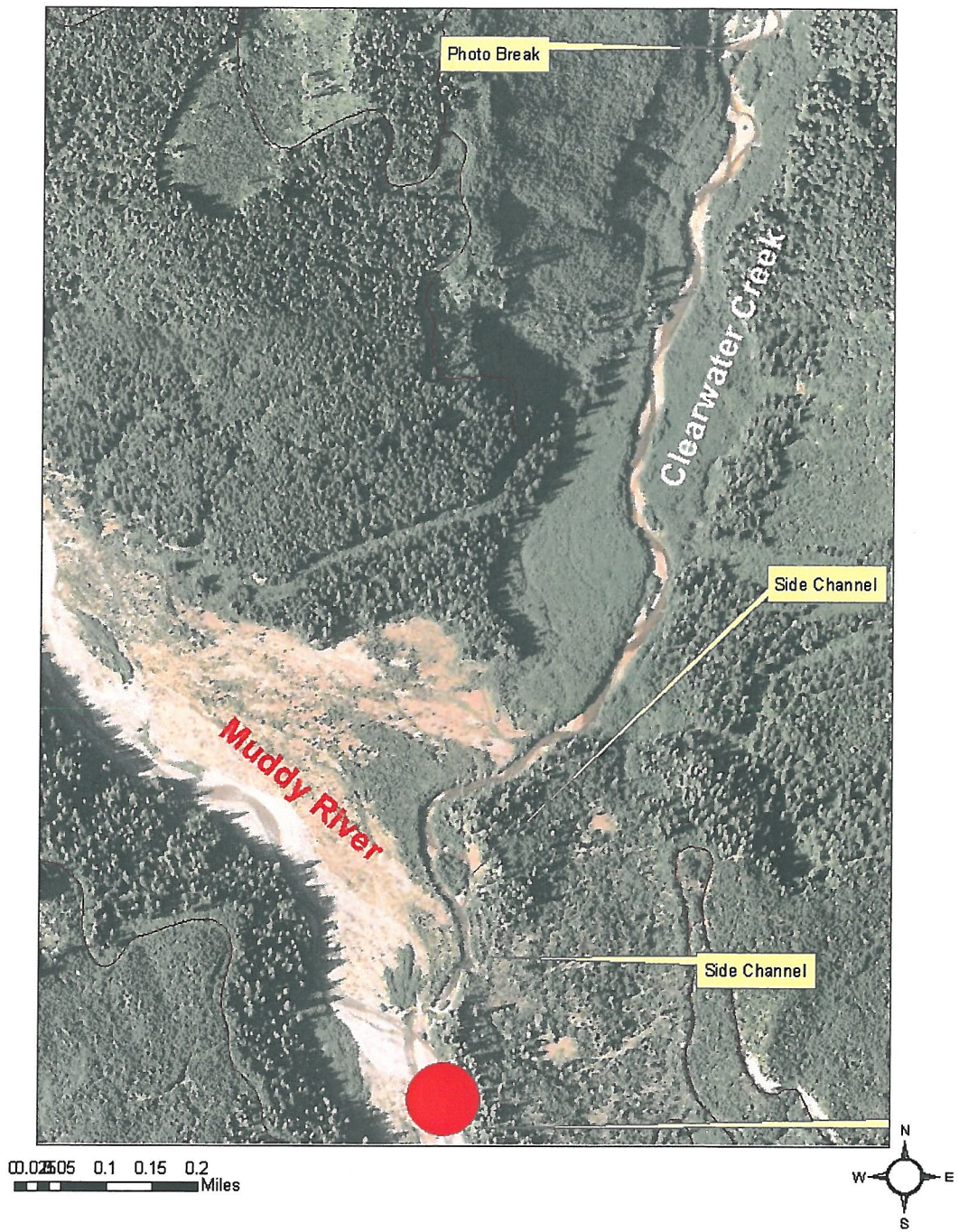
2012 Clearwater Creek Project



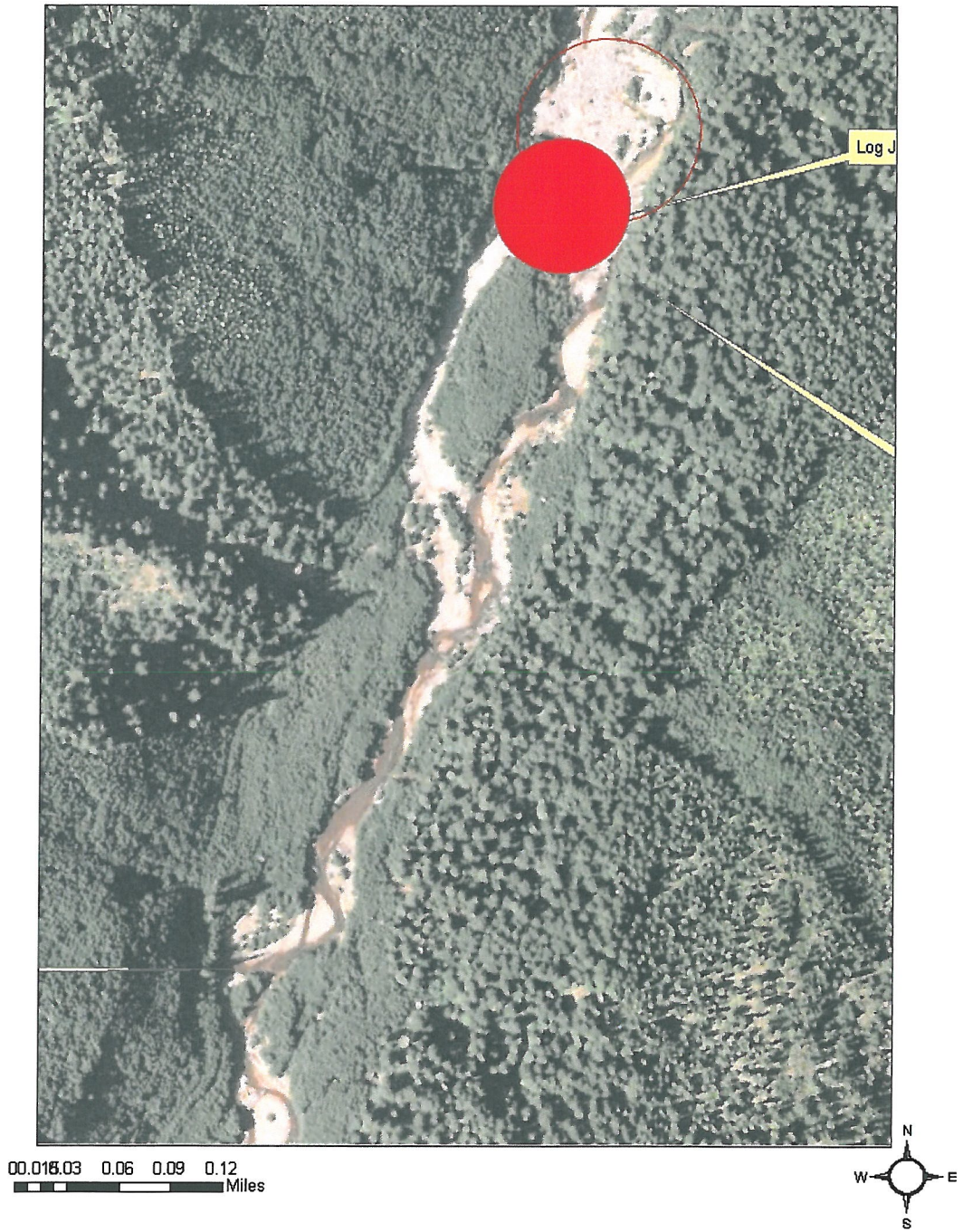
0.0625 0.125 0.1875 0.25 0.3125 0.375 0.4375 0.5 Miles



2012 Clearwater Creek Project Lower Photo



2012 Clearwater Creek Project Upper Photo





Clearwater Creek-Typical Slow-water found.



Clearwater Creek- Top of Side Channel



Cutthroat Trout Clearwater Creek October 2011