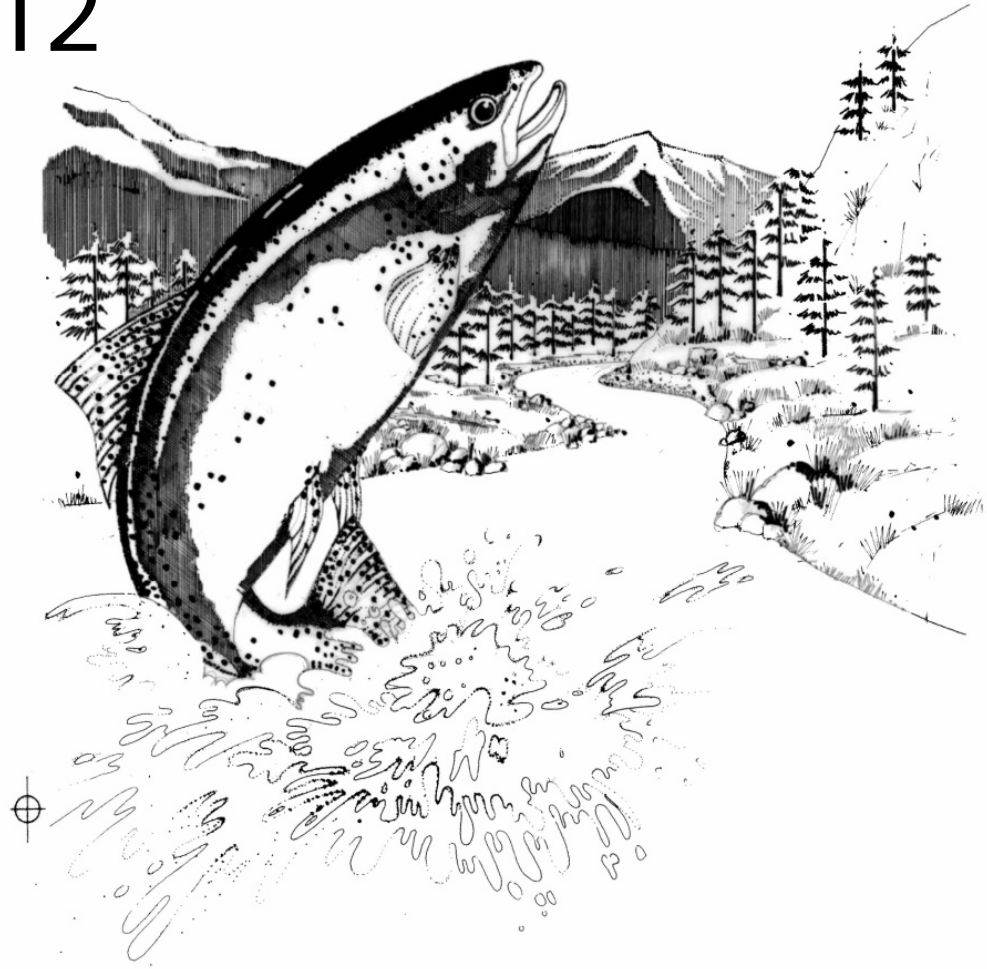




Forest Service Projects

2012





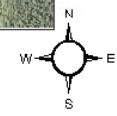
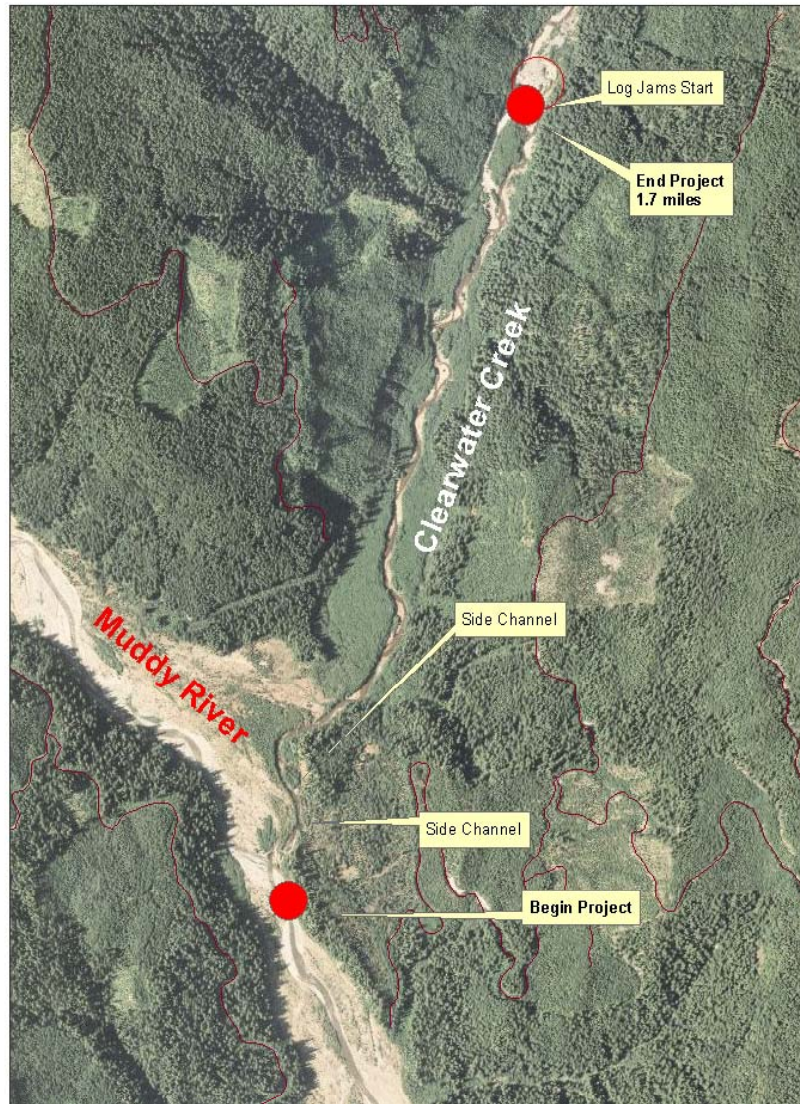
Clearwater Creek Habitat Restoration



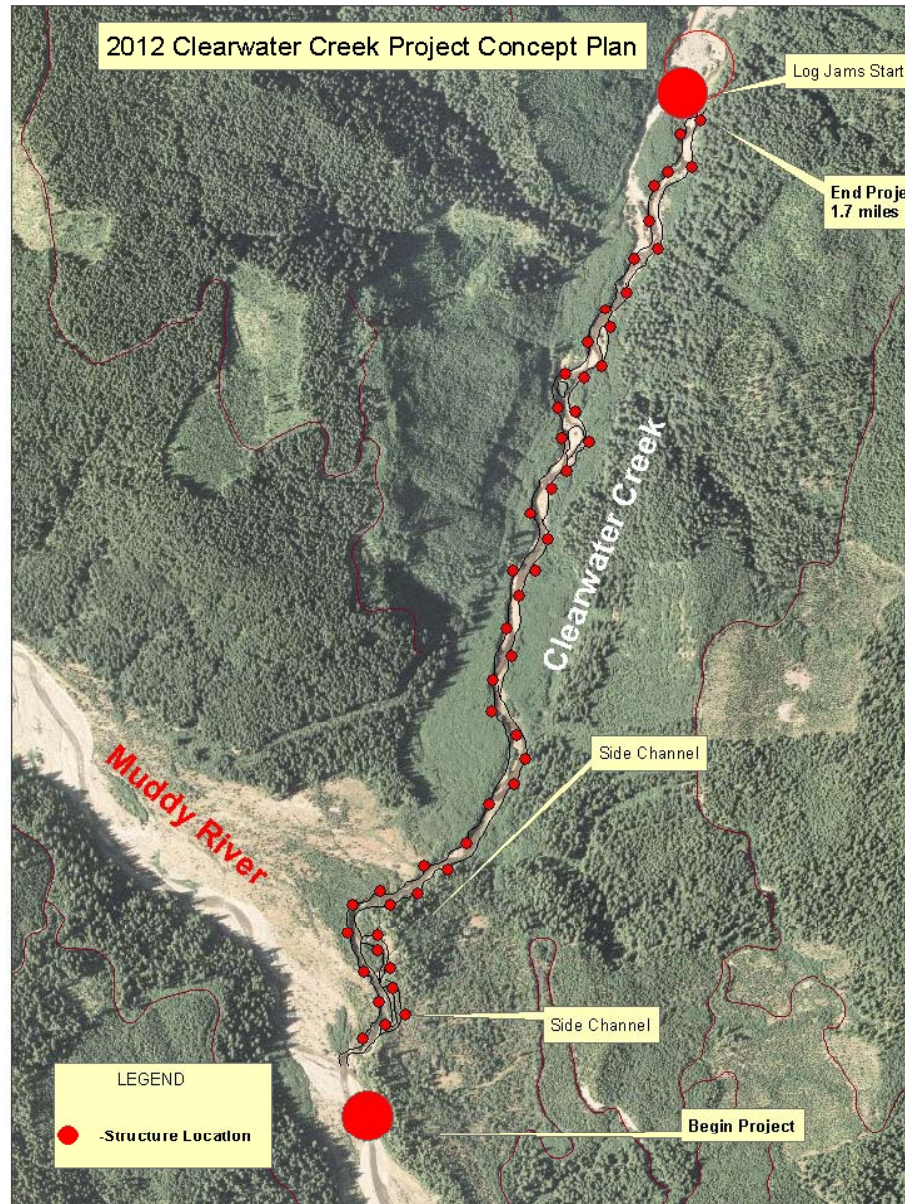
Project Description

- Restore mainstem Clearwater Creek and two side channels with Large Woody Material
- Target Species-, Coho Salmon, Steelhead Trout and Chinook Salmon
- Project Length- 1.7 miles
- Approximately 40 structures composed of 800 pieces of LWM with rootwads

2012 Clearwater Creek Project



2012 Clearwater Creek Project Concept Plan



Log Jams Start

End Project
1.7 miles

Clearwater Creek

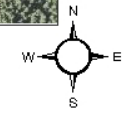
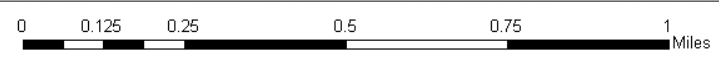
Muddy River

Side Channel

Side Channel

Begin Project

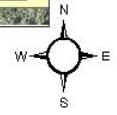
LEGEND
● -Structure Location



2012 Clearwater Creek Project Lower Photo



0 0.025 0.05 0.1 0.15 0.2 Miles

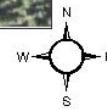


2012 Clearwater Creek Project Upper Photo



Log J

00.018.03 0.06 0.09 0.12
Miles





Salmon Plans

- The Lower Columbia Fish Recovery Boards Salmon Recovery Plan specifically cites side channel habitat and stream channel habitat structure as high priority restoration needs.
- EDT Ranks this area as “high” for coho reach potential and as a Primary coho and Chinook reach, a “medium” reach potential for Steelhead and Chinook, and a “contributing” population for Steelhead.
- The top three critical life stages identified in the plan are egg incubation and juvenile active rearing, and, juvenile inactive rearing (overwintering).
- The ACC Synthesis Matrix rated this section of the river as having unknown restoration potential.



Methods

- Thin a timber harvest unit from Pepper Cat to get trees with rootwads.
- Truck trees as long as possible from unit to Muddy River using Forest Service Roads 25 and 8322.
- Transport trees down Muddy River floodplain and up Clearwater Creek using skidder.
- Bury some trees for key anchor points and put others on the bank to create LWM clusters using an excavator.

Clearwater Creek-Typical Slow-water found.



Clearwater Creek-Typical Slow-water area



Clearwater Creek- Top of Side Channel



Clearwater Creek mainstem near top of side channel

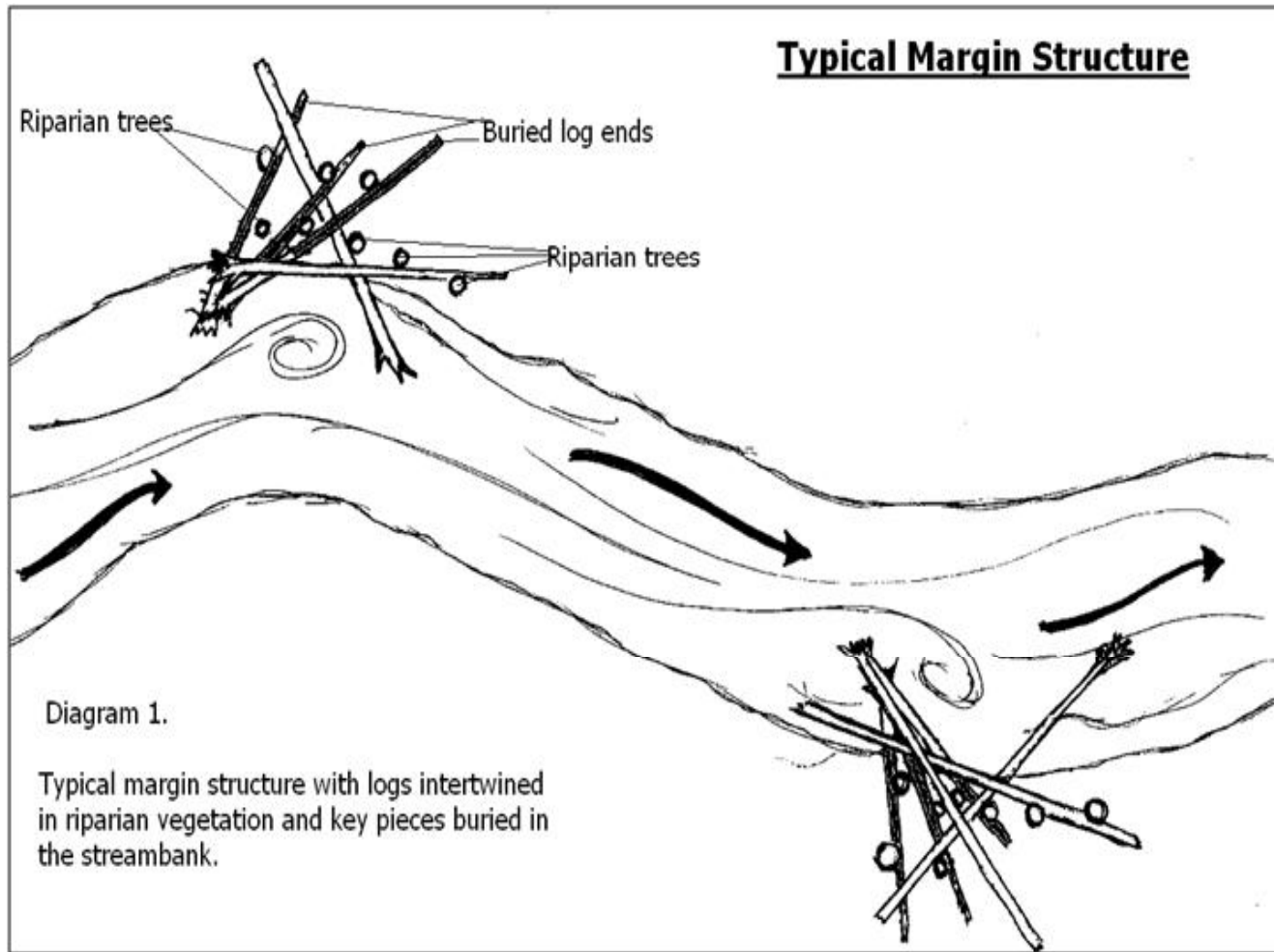


Clearwater Creek



Clearwater Creek

Typical Structure





Project Budget

Action	ACC Funds	Partner Funds
NEPA	\$8,000	
Final Designs and Project Mgmt and Contract Administration	\$11,000	\$17,000
Equipment Contract	\$103,000	
Materials	\$2,000	\$120,000
Monitoring	\$5,000	\$4,000
Total	\$128,000	\$141,000



Project Partners

Partner	Contribution	Funds
Forest Service	Project development, Contracting, Permitting, Monitoring	\$17,000 In-kind
	Trees	\$120,000
Mt. St. Helens Institute	Monitoring	\$4,000 In-kind



● **END**

- Clearwater Creek-Questions