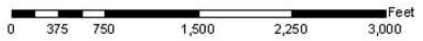
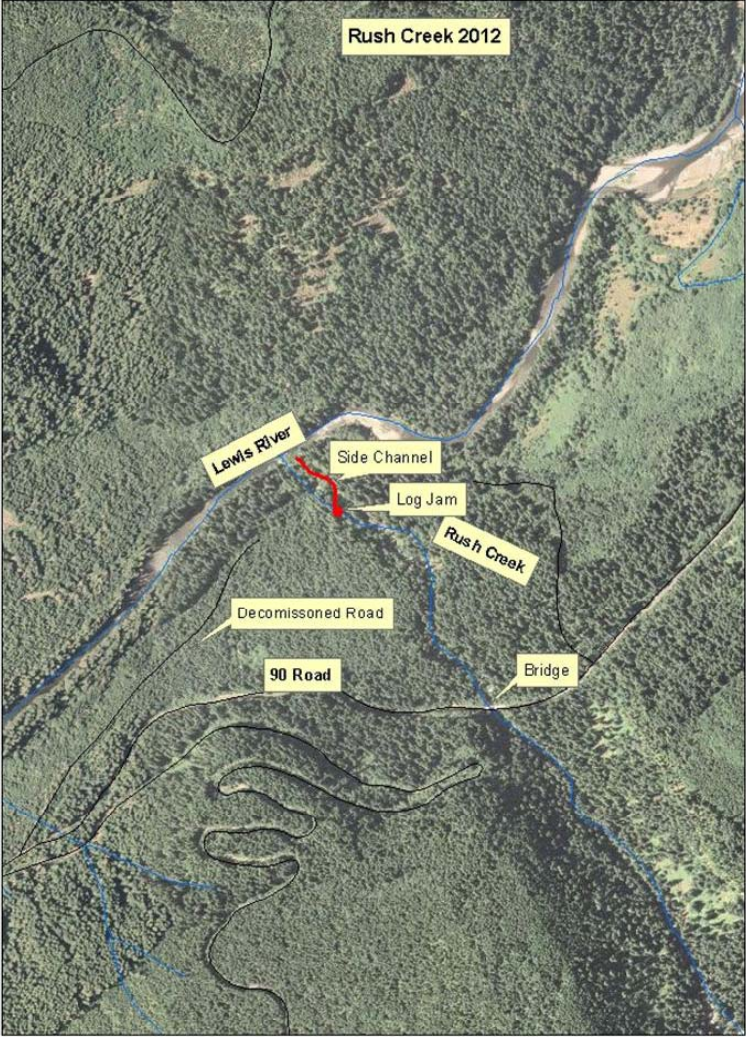


# Rush Creek Habitat Restoration Pilot Project

# Project Description

- Large woody material will be placed in a side channel of Rush Creek to increase bank stability, enhance and restore juvenile Bull Trout rearing habitat, and create adult spawning habitat.
- Target Species- Bull Trout
- Project Length- 750 feet.
- Approximately 24 pieces of large woody material and 8 cubic yards of gravel will be placed in a side channel of Rush Creek to create 4 log weirs/complexes. This is a “Pilot” project and will be heavily monitored to determine success of project.





Picture of side channel being proposed for habitat improvement





Picture of side channel being proposed for habitat improvement



Picture of side channel being proposed for habitat improvement

# Salmon Plans

- The ACC Synthesis Matrix rated Rush Creek as having Low restoration potential, needing additional gravels, moderate need for channel stability, but some of the best Bull Trout Habitat in the basin because of cool waters.

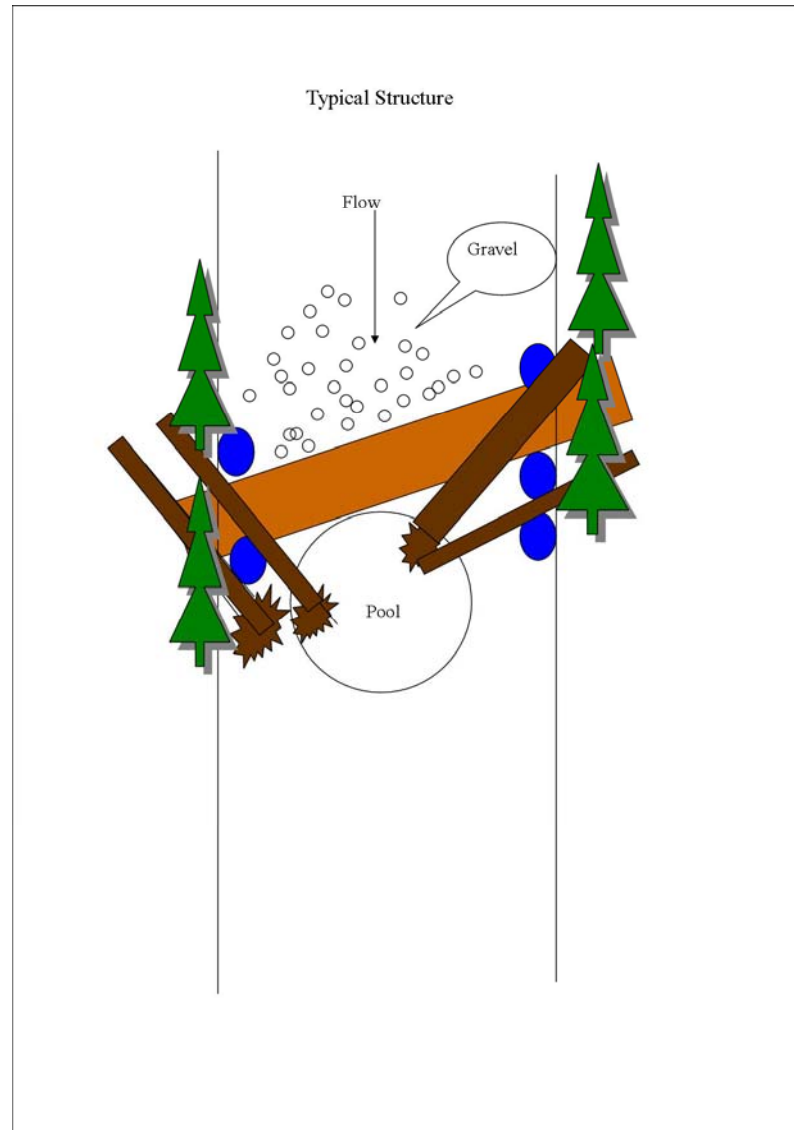


# Methods

- Thin a timber harvest unit from Pepper Cat to get small trees.
- Truck trees to a staging area at House Rock Gravel Quarry.
- Use a small helicopter with 750 lb capacity to move logs and gravel to structure sites using a long line.
- Use volunteer labor to maneuver logs next to boulders to provide stability, may attach some logs to boulders using cable.
- Use volunteer labor to spread gravel upstream of structures



# Typical Structure



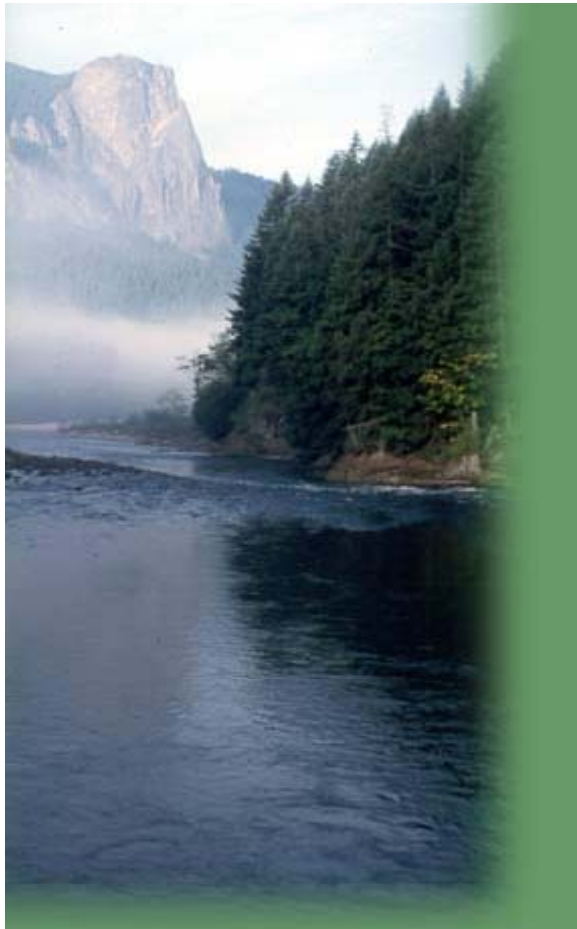
# Project Budget

Action	ACC Funds	Partner Funds
NEPA	\$3,000	
Final Designs and Project Mgmt and Contract Administration	\$7,000	\$19,000
Equipment Contract	\$14,720	\$2,000
Materials	\$1,000	\$1,200
Monitoring	\$6,000	\$17,000
<b>Total</b>	<b>\$31,720</b>	<b>\$39,200</b>

# Project Partners

Partner	Contribution	Funds
Forest Service	Project development, Contracting, Permitting, Monitoring	\$14,000 In-kind
	Trees	\$1,200 In-kind
Gifford Pinchot Task Force	Monitoring and project implementation	\$19,000 In-kind
WDFW	Monitoring	\$2,000 In-Kind
USFWS	Monitoring Plan & Technical assistance	\$3,000 In-Kind

## The Gifford Pinchot Task Force



- The GPTF is a 501 (C) 3 non-profit organization with over 6,000 members in Oregon and Washington.
- The GPTF supports the biological diversity and communities of the Northwest through conservation and restoration of forests, rivers, fish, and wildlife.
- We have partnered with the Forest Service on many occasions to work on projects that protect fish and wildlife within the Gifford Pinchot National Forest. For example we have received funds through Ecotrusts and NFF for projects that have removed roads harming fish habitat, coordinate collaborative groups on the GPNF, and complete NEPA and on the ground administration of several stewardship thinning projects.



Example:  
Clear Creek Road Restoration



In the summer of 2010 restoration professionals were busy restoring fish and wildlife habitat near Clear Creek, a tributary of the Lewis River in the Gifford Pinchot National Forest. The Gifford Pinchot Task Force helped secure funding from Ecotrust's Whole Watershed Restoration Initiative and Wild Fish Conservancy and partnered with the Forest Service to remove eight miles of road. These roads were strategically identified for removal because they are in a key watershed for salmon recovery and benefit elk, gray wolves, and other wildlife by expanding the unroaded area around Spencer Ridge Roadless Area by 3,000 acres.



## Monitoring

The Gifford Pinchot Task Force has committed volunteers who will actively monitor the project after completion as well as help implement the project as needed by the Forest Service.



The GP Task Force outreach coordinator will be actively recruiting volunteers for this specific project who will be trained in the monitoring protocol by Forest Service and USFWS personnel. Our volunteers have proven to be dedicated, motivated and compliant with all necessary protocol for projects that we undergo on the ground.

## Volunteer Duties

- Instream Project:
  - Hand spread the gravel in the stream once it is deposited by helicopter
  - Help place logs in the side channel
- Monitoring Project:
  - A Task Force employee along side Forest Service and USFWS personnel will thoroughly train volunteers in the protocol for monitoring as attached.
  - Monitoring will be conducted by volunteers on a regular basis as outlined by the protocol.
  - The Gifford Pinchot Task Force will be overseeing all the volunteer recruitment and monitoring tasks to ensure that they are being performed satisfactorily and in accordance to protocol.