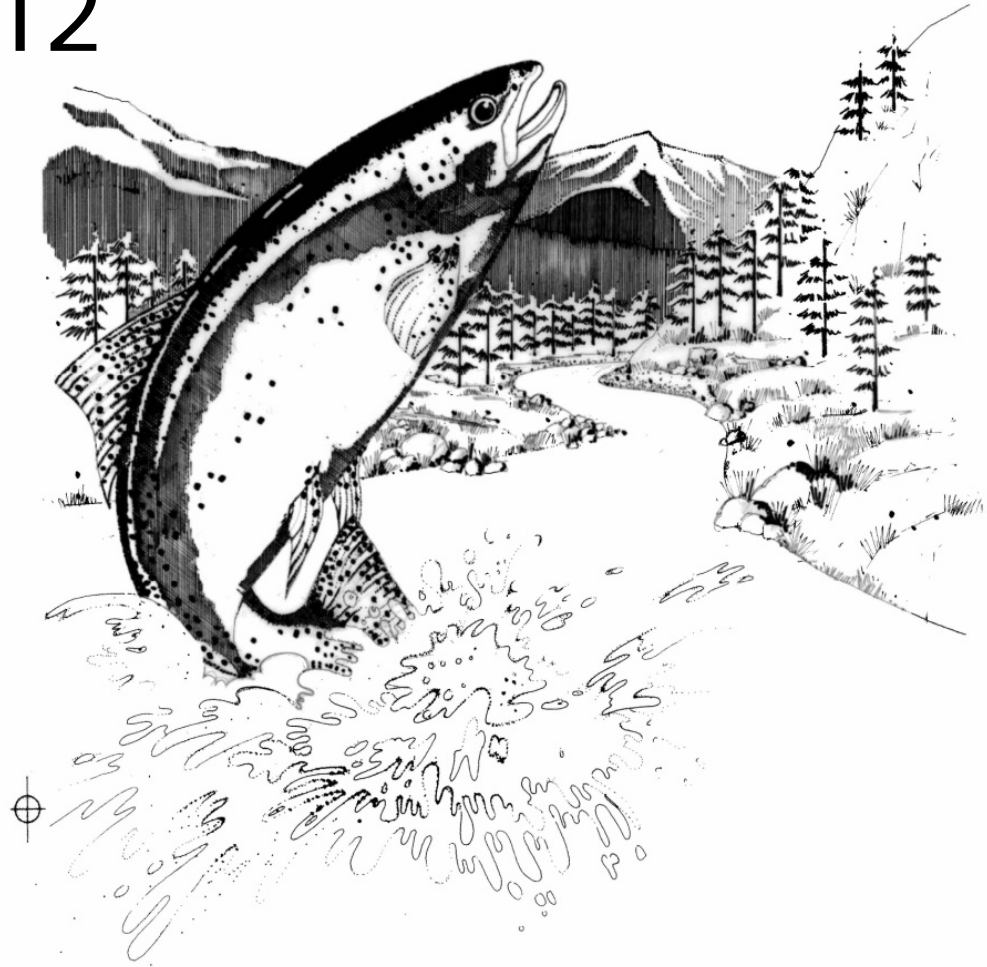




Forest Service Projects

2012





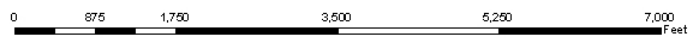
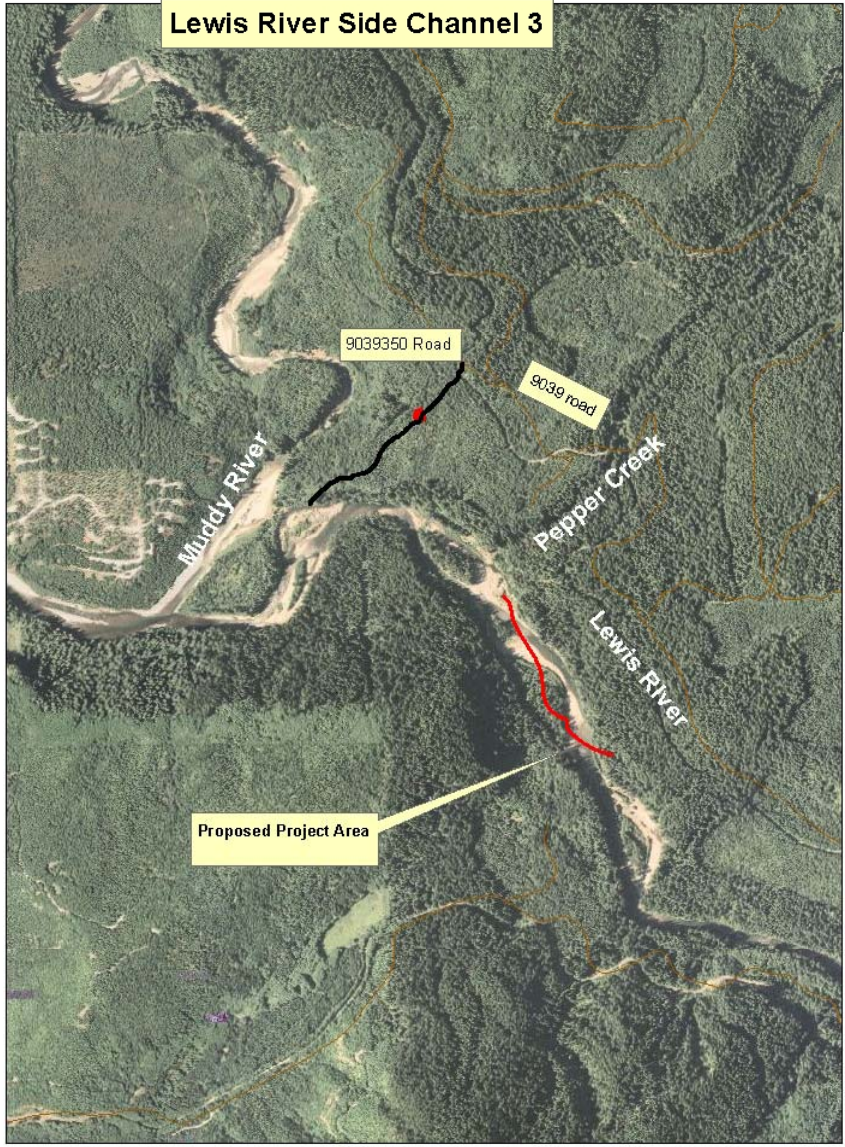
Lewis River Side Channel 3 Habitat Restoration



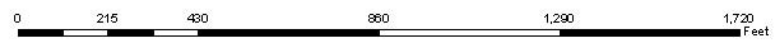
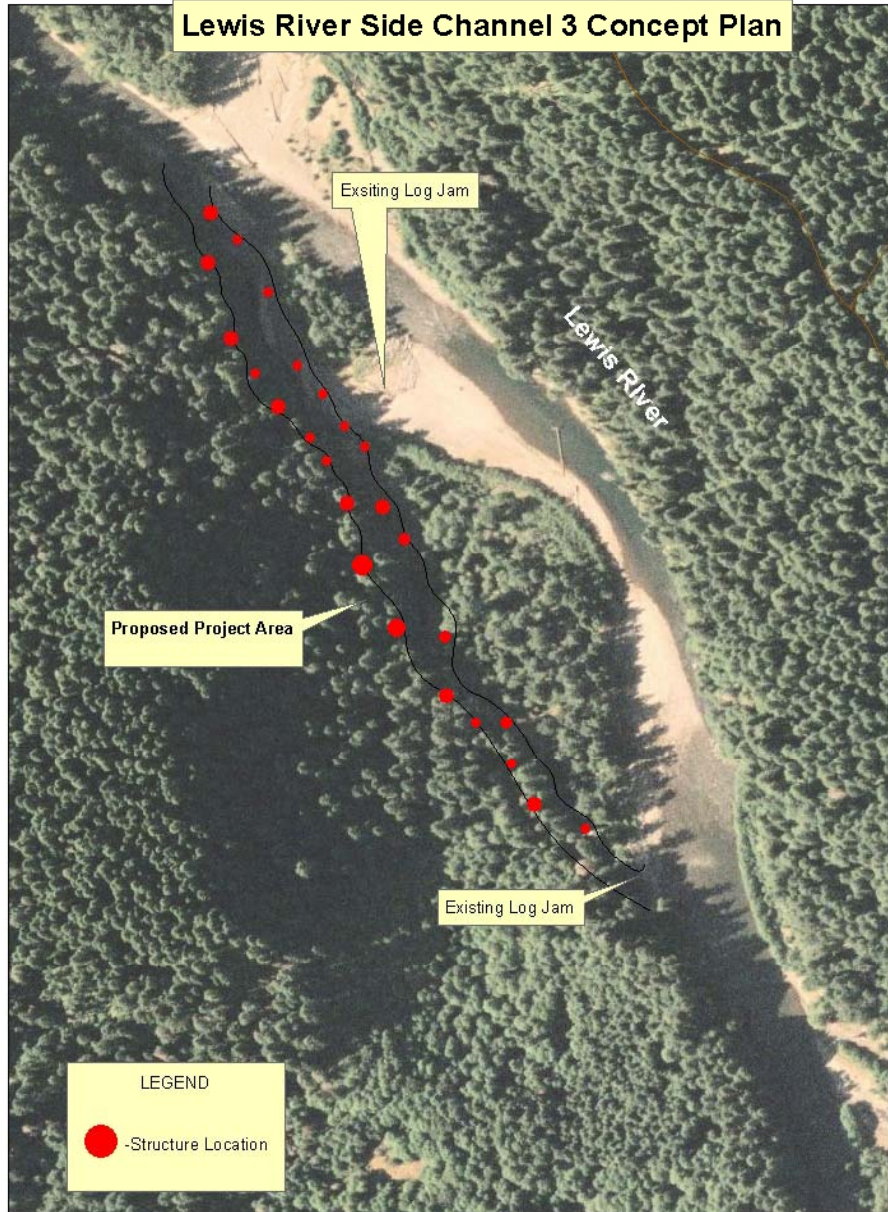
Project Description

- Restore a side channel with Large Woody Material
- Target Species-Coho Salmon
- Project Length- ½ mile
- Approximately 25 structures composed of 300 pieces of LWM with rootwads
- Separated from mainstem by a logjam and a stable island.
- This side channel is located on Forest Service Lands and is approximately 1/8 mile upstream of the Pepper Lewis Side channel completed last year.

Lewis River Side Channel 3



Lewis River Side Channel 3 Concept Plan





Salmon Plans

- EDT analyses concludes habitat diversity and side channel habitat is one of the highest concerns in this reach and it should respond well to restoration activities.
- Concerns include high habitat diversity, moderate hatchery fish competition, food availability, and sediment concerns.
- The ACC Synthesis Matrix rated this section of the river as having medium restoration potential and as a Primary coho population area.



Methods

- Thin a timber harvest unit from Pepper Cat to get trees with rootwads.
- Truck trees as long as possible from unit to confluence of Muddy River and Lewis River via Forest Service and Private Roads.
- Transport trees up Lewis River side channel using skidder and excavator.
- Bury some trees for key anchor points and put others on the bank to create LWM clusters



Lewis River Side Channel 3 at low flow.



Lewis River Side Channel 3

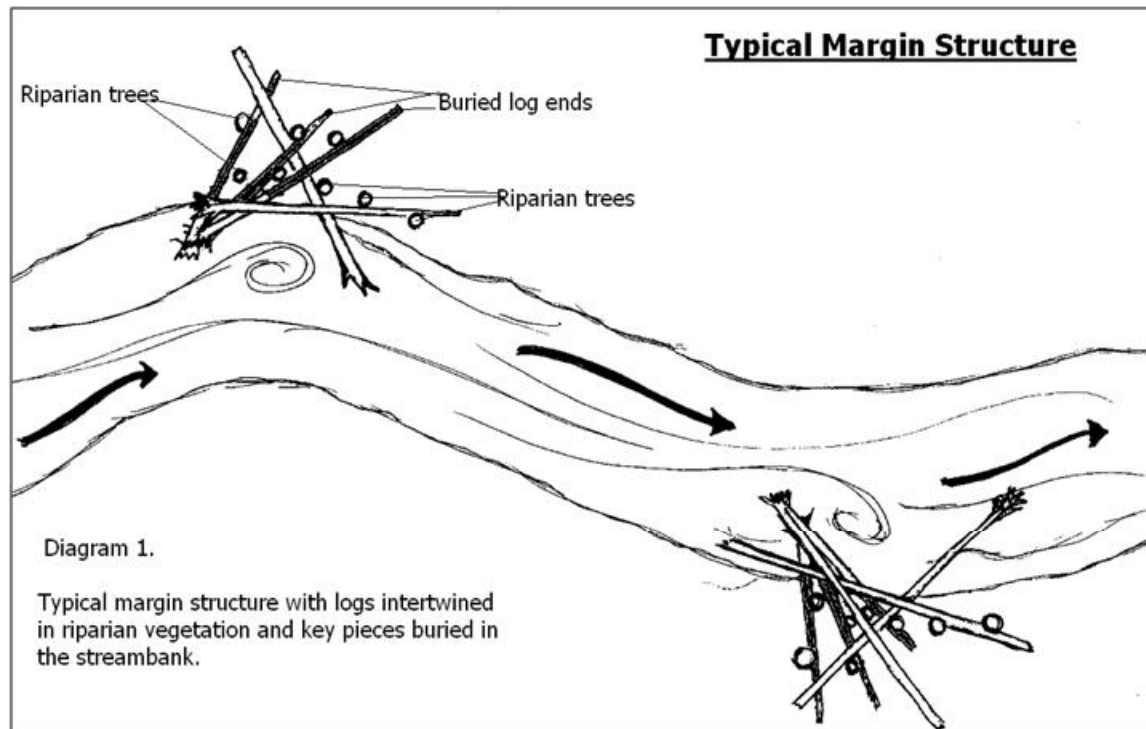


Lewis River Side Channel 3 at low flow



Lewis River Side Channel 3 logjam at top of side channel

Typical Structure





Project Budget

| Action | ACC Funds | Partner Funds |
|--|-----------------|-----------------|
| NEPA | \$8,000 | |
| Final Designs and Project Mgmt and Contract Administration | \$8,000 | \$14,000 |
| Equipment Contract | \$30,000 | \$2,400 |
| Materials | \$1,000 | \$45,000 |
| Monitoring | \$3,000 | \$2,000 |
| Total | \$50,000 | \$63,400 |



Project Partners

| Partner | Contribution | Funds |
|---------------------------------------|--|------------------|
| Forest Service | Project development, Contracting, Permitting, Monitoring | \$14,000 In-kind |
| | Trees | \$45,000 In-kind |
| Mt. St. Helens Institute | Monitoring | \$2,000 In-kind |
| Swift Community Action Team (SCAT) | Machine Time | \$800 |
| Fish First | Design and Monitoring | \$800 |
| Equipment Rental Services | Machine Time | \$800 |



● **END**

- Lewis River Side Channel 3- Questions