

PRE- PROPOSAL FORM -

Lewis River Aquatic Fund

1. Applicant organization.

USDA Forest Service
Gifford Pinchot National Forest

2. Organization purpose

Resource management agency

3. Project manager (name, address, telephone, email, fax).

Adam Haspiel
Mount St. Helens National Volcanic Monument
42218 NE Yale Bridge Road
Amboy, WA 98601
360-449-7833
360-449-7801-FAX
ahaspiel@fs.fed.us e-mail

Fishery Biologist
25+ years experience with fish habitat restoration projects

4. Project Title

Lewis River Alcove near 90480 Road

5. Summary of Project proposal

The Forest Service proposes to restore approximately 200-300 feet of alcove habitat on the Lewis River. This site was located during scoping efforts for the Lewis River Acclimation Pond. This alcove is protected from high flows of the Lewis River by natural landforms, and at one time was considered for an acclimation pond. It is expected that coho salmon will be the main species to benefit from these actions; however steelhead and chinook juveniles may also use this alcove.

Approximately 60 pieces of large woody material with rootwads will be placed in the alcove to improve rearing habitat. Woody material will be flown in via helicopter during the same time period wood is flown into Little Creek and Lewis River Side Channel 4 projects to save on move-in costs. A small excavator will anchor woody material into streambanks. Access for the excavator to the river will be down the decommissioned 90480 road.

This project address the following Aquatic Fund priorities.

Priority 1: *Benefit fish recovery throughout the North Fork Lewis River, with priority to federal ESA-listed species.*

Chinook and coho salmon along with steelhead trout are listed as a threatened species under the ESA. This project will directly benefit recovery of listed species by providing quality rearing of juvenile salmonids.

Priority 2: Support the reintroduction of anadromous fish throughout the basin.

Creating quality rearing and overwintering habitat in alcoves directly off the Lewis River will support reintroduction of anadromous fish in the Lewis River Watershed.

Priority 3: Enhance fish habitat in the Lewis River Basin-, with priority given to the North Fork Lewis River.

This project is located in the North Fork Lewis River Basin. It is well documented that coho salmon juveniles prefer slow water habitats with large wood components.

6. Project location

The project area is located approximately 1000 feet downstream of Spencer Creek. The project area can be accessed from the decommissioned 90480 road

7. Expected products and results

This project will result in on large complex structure over 200-300 feet. It will create complex slow water pockets for juvenile salmonid rearing and overwintering opportunities.

8. Benefits of proposed Project

Increased numbers of juvenile salmonids above background levels from reintroduction activities are expected to occur from this project.

9. Project partners and roles.

Mount St. Helens Institute.

10. Community involvement (to date and planned).

The Forest Service maintains active community involvement by scheduling regular events with legislators, scientists, members, and key individuals for continual program and project development along with cultivating strong ties with agencies, academia, and local citizen groups.

11. Procedure for monitoring and reporting on results.

- 1) Perform baseline monitoring. This monitoring will occur prior to project implementation and include a longitudinal profile, cross-sections, pebble counts, photo-documentation and snorkel surveys. MSHI will provide two interns, five volunteer urban youth and a supervisor to perform monitoring work. They will perform all aspects of the monitoring with supervision and training from the Forest Service.
- 2) Perform after project monitoring. This monitoring will occur following project implementation and will continue on an annual basis for several years following project completion. MSHI will provide two interns for this portion of the work supervised by the Forest Service.

- 3) **Monitoring Report.** A monitoring report will be written each year following project implementation. MSHI will provide raw data in excel format, the Forest Service will provide analysis of data and report.

12. Project schedule (anticipated start date, major milestones, completion date).

NEPA – Complete in 2015
Project Implementation July 2016
Post project monitoring 2017

13. Funding requested (estimated cost for project design, permitting (including necessary resource surveys), construction, and monitoring).

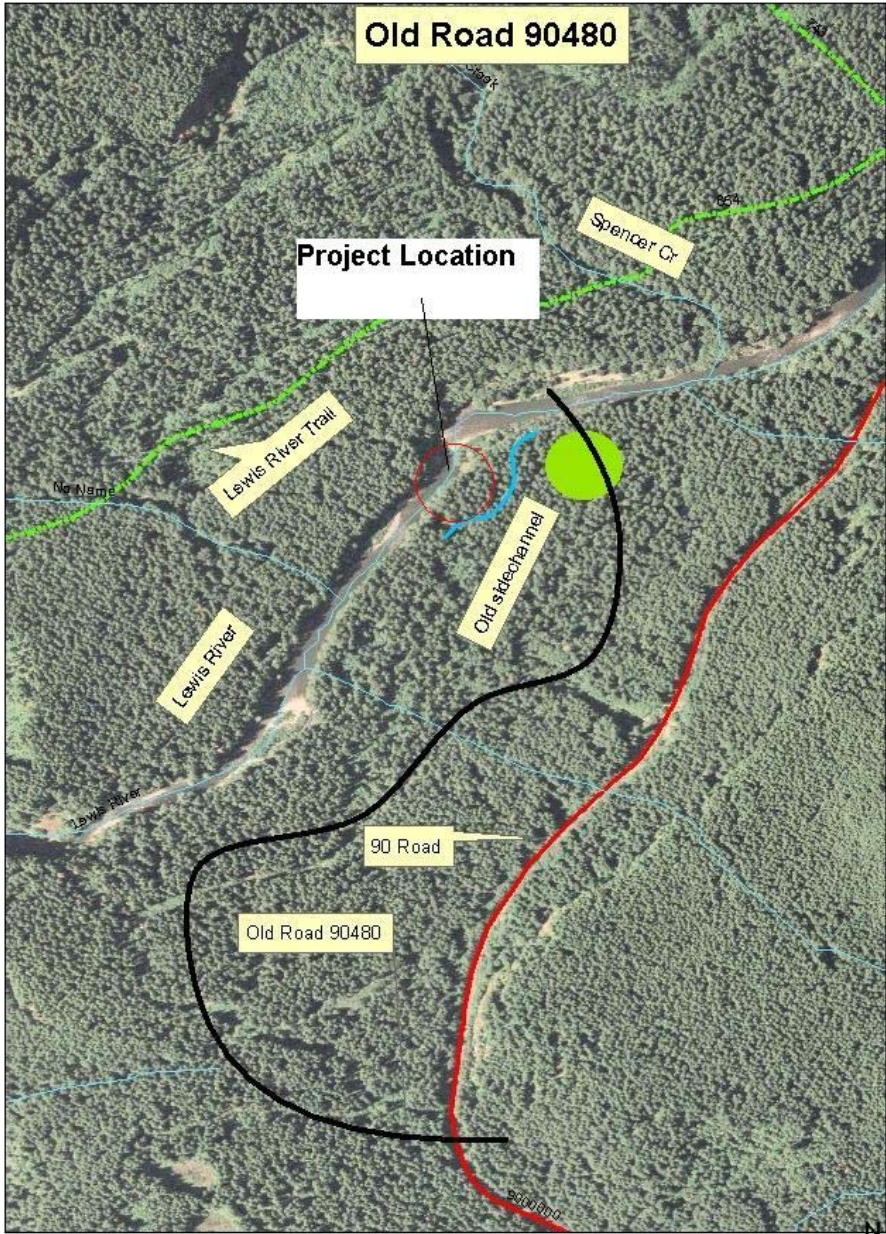
Total ACC Funds-\$25,000

14. Type and source of other contributions (Identify cash (C) and/or in-kind (IK), and status, pending (P) or confirmed (Co)).

Gifford Pinchot National Forest- **\$20,000** (IK) (Co)
Mt. St. Helens Institute- **\$2,000** (IK)(Co).

15. If you have technical assistance needs for this project, please briefly describe such needs.

None Needed



Old Road 90480

Project Location

Spencer Cr

Lewis River Trail

No Name

Lewis River

Old sidechannel

90 Road

Old Road 90480

0 250 500 1,000 1,500 2,000 Feet

