

Attachment A

PRE-PROPOSAL FORM

Lewis River Aquatic Fund

1. Applicant organization.

Lower Columbia Fish Enhancement Group (LCFEG)

2. Organization purpose

To lead the process of salmon recovery in a way that ensures community involvement in habitat restoration so that abundant, naturally self-sustaining salmon and steelhead runs occur throughout the Lower Columbia River region.

3. Project manager (name, address, telephone, email, fax).

Peter Barber

12404 SE Evergreen Highway Vancouver, WA 98683

Peter@lcfeg.org

360-882-6671

www.lcfeg.org

Note: Please attach a resume or other description of the education and experience of the persons responsible for project implementation.

4. Project Title

Haapa Habitat Enhancement

5. Summary of Project proposal

Note: Please include description of how project addresses Lewis River Aquatic Fund priorities and identify any impacts to other resource areas (e.g. wildlife, recreation, etc.).

The Haapa Habitat Enhancement Project will restore critical habitat for ESA-listed salmonids in one of the highest priority reaches in the lower NF Lewis River. This project addresses the Lewis River Aquatic Fund priorities #1 & #3 and has high restoration potential for multiple salmonid populations, including fall Chinook, coho, steelhead, and chum. Human uses, including intensive historical instream gravel mining at this site, have degraded habitat quantity and quality. The habitat restoration designs focus on increasing spawning and rearing habitat, including pool quantity and quality, rearing cover and refugia, and spawning habitat availability. The project builds upon past and ongoing restoration work in the lower Lewis River to address habitat limiting factors for high priority ESA-listed salmon and steelhead populations.

Priority 1: *Benefit fish recovery throughout the North Fork Lewis River, with priority to federal ESA-listed species.*

Chinook, chum, coho and steelhead trout are listed as a threatened species under the ESA. This project will contribute to the recovery of these species by increasing the amount and quality of complex rearing habitat and refugia in the NF Lewis River.

Priority 3: *Enhance fish habitat in the Lewis River Basin-, with priority given to the North Fork Lewis River.*

The project directly benefits all salmonids originating in and returning to the NF Lewis River.

6. Project location (including River/Stream and Lat/Long coordinates if available).

The project area is located between RM 13.8 and 15.0. The site is adjacent to the Haapa Boat Ramp and river access points owned by Clark County, WDFW, and private landowners. The site is downstream of the canyon reach, which is highly productive for Chinook spawning. The project area encompasses the main channel and off-channel areas along the river-left (south) bank.

7. Expected products and results (Please attach any drawings).

- Enhance 1,200 lineal feet (5 acres) of existing backwater habitat using large wood structures to enhance cover and complexity for rearing juvenile salmon and steelhead.
- Enhance channel margin juvenile rearing habitat along up to 1,500 lineal feet of the mainstem Lewis River using large wood structures and streambank plantings.
- Creation of 1,000 lineal feet of connected low-flow side-channel habitat to enhance habitat diversity and quantity for multiple species and life-stages.
- Restore the native riparian plant community on up to 9 acres to restore long-term riparian processes and function.
- Construct bar apex jams within the mainstem island complex to enhance lateral channel dynamics and habitat formation.
- Enhance/create approximately 800 feet of off-channel alcove habitat located upstream of the Haapa boat ramp.

8. Benefits of proposed Project

Chinook, chum, coho and steelhead trout are listed as threatened species under the ESA. This project will contribute to the recovery of these species by increasing the quantity and quality of habitat available to fish in the Haapa (RM 13.5 – 15.0) area, specifically along the south shore.

9. Project partners and roles.

An inter-disciplinary technical team is providing guidance throughout the design process to ensure that landowners and managers are involved throughout project development. The technical team consists of representatives from WDFW, Clark County Parks and Recreation, PacifiCorp, Bonneville Power Administration, Cowlitz Indian Tribe, WA DNR Aquatics, and local private landowners.

10. Community involvement (to date and planned).

The design for this project is being vetted through the LCFRB project review process, which includes significant opportunity for community involvement and technical review. Final coordination with community, DNR Aquatics, private landowners, and recreational user representatives will be conducted prior to submission of construction permitting documents.

11. Procedure for monitoring and reporting on results.

WDFW conducts regular monitoring of the lower NF Lewis River, which includes juvenile fish seining, enumeration, and tagging. This on-going monitoring effort will be used to evaluate project effectiveness. Any additional monitoring procedures will be developed collaboratively with WDFW after implementation of this restoration project. Reporting of results will be done using ACC protocols (if existing), or standard SRFB protocols, which include a final as-built report and photo summary.

12. Project schedule (anticipated start date, major milestones, completion date).

Project construction activities will commence in 2015 and extend through 2016. The specific final construction schedule will be developed as part of this project when funded.

13. Funding requested (estimated cost for project design, permitting (including necessary resource surveys), construction, signage, monitoring and administrative/insurance).

\$75,000 of ACC funding is requested to assist with construction of the restoration work and will also be used as cost-share (match) for an anticipated SRFB grant (2014 Grant Round) that will be pursued to also help fund project construction. The design for the project was previously funded as a part of SRFB Project #12-1165.

14. Type and source of other contributions (Identify cash (C) and/or in-kind (IK), and status, pending (P) or confirmed (Co)).

\$112,900 – Analysis, design, and permitting; SRFB Project #12-1165; C; Co

\$TBD – Additional construction funding; SRFB (2014 Grant Round); C; P (anticipated)

\$TBD – LCFEG; IK; P

15. If you have technical assistance needs for this project, please briefly describe such needs.

Technical assistance for design is being provided by a Technical Oversight Group consisting of representatives from multiple entities including WDFW, Clark County, Cowlitz Indian Tribe, PacifiCorp, Lower Columbia Fish Recovery Board, WA Dept of Natural Resources, and Bonneville Power Administration. It is anticipated that the TOG will be available to provide continued technical assistance during the construction and monitoring phase. Inter-Fluve is providing technical services for the design and will provide construction oversight and assistance.

16. If any boating hazards are an issue please note if any signage requirements.

Boater safety is an important consideration in project design. The design of the project, and construction methods, will incorporate boater safety considerations and will be vetted by recreational user representatives. Signage is anticipated for the project as has been conducted for other past restoration just downstream of this project site. Signage may also be a requirement of the WA DNR aquatic land use authorization for the project.

Location: Haapa Project site, NF Lewis (RM 13.5-15)



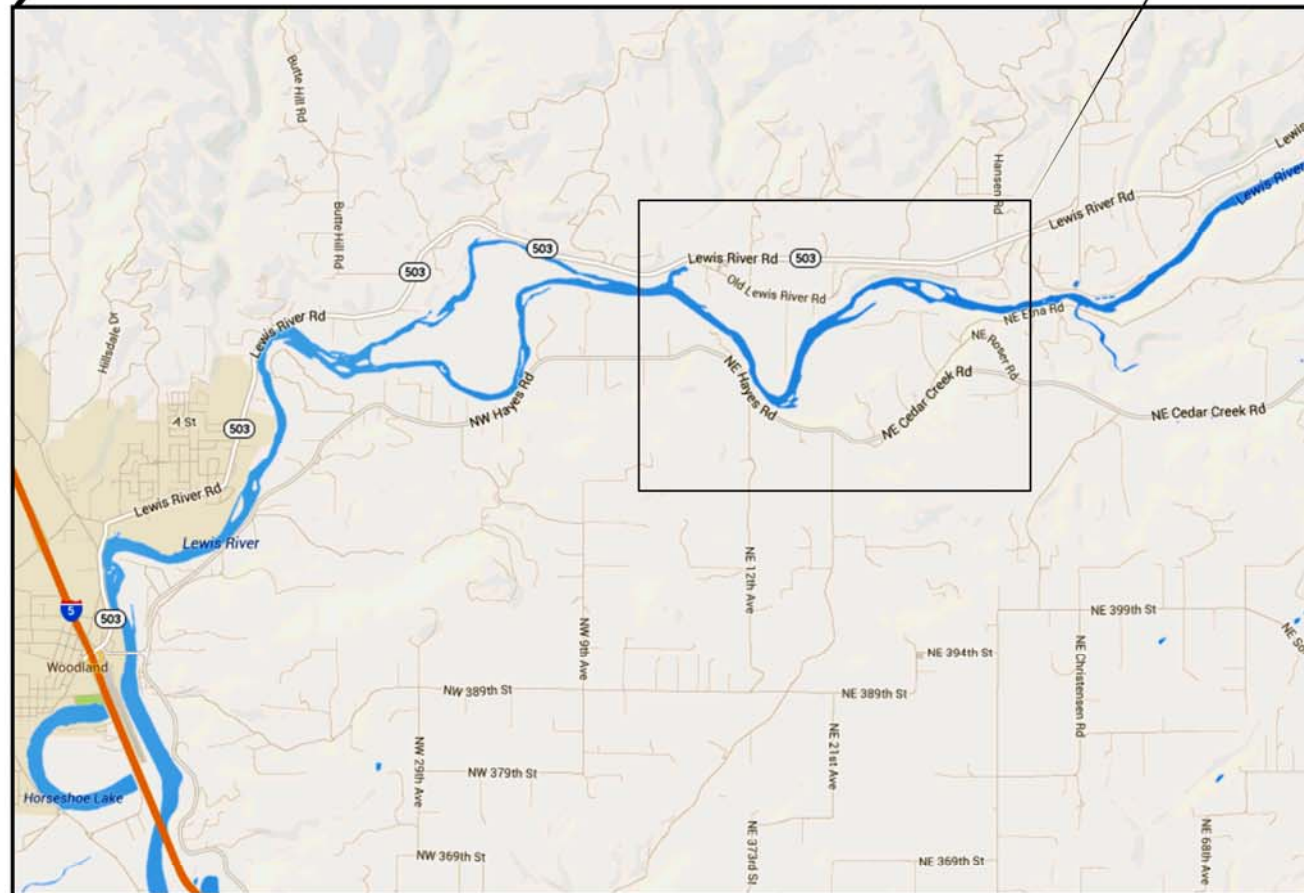
N. LEWIS RIVER - HAAPA FISH HABITAT RESTORATION PROJECT

CLARK COUNTY, WASHINGTON

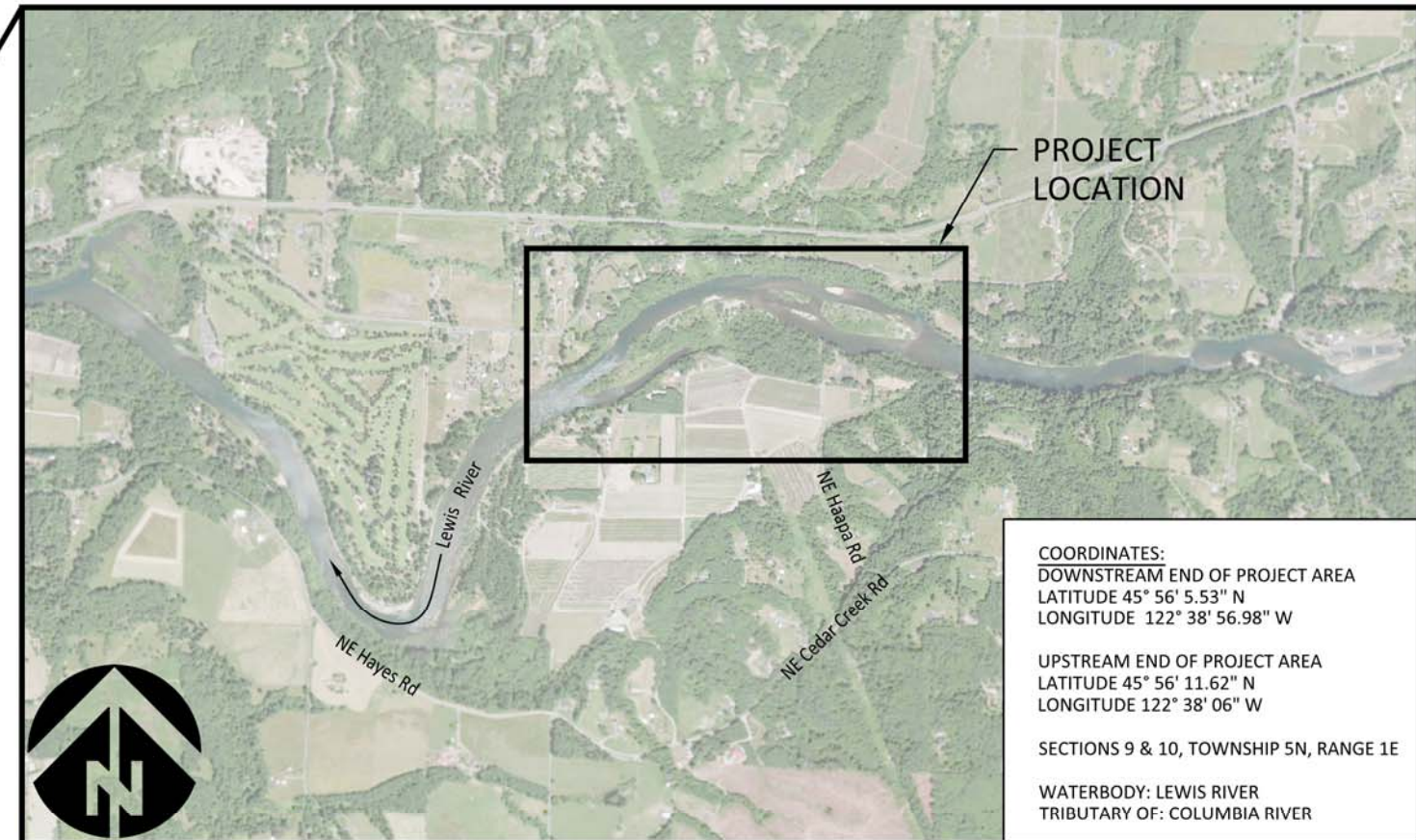
PRELIMINARY DESIGN - SEPTEMBER 17, 2013



LOCATION MAP
STATE OF WASHINGTON



VICINITY MAP
NOT TO SCALE



COORDINATES:
 DOWNSTREAM END OF PROJECT AREA
 LATITUDE 45° 56' 5.53" N
 LONGITUDE 122° 38' 56.98" W
 UPSTREAM END OF PROJECT AREA
 LATITUDE 45° 56' 11.62" N
 LONGITUDE 122° 38' 06" W
 SECTIONS 9 & 10, TOWNSHIP 5N, RANGE 1E
 WATERBODY: LEWIS RIVER
 TRIBUTARY OF: COLUMBIA RIVER

SITE MAP
NOT TO SCALE

SHEET INDEX

- 1 Cover Sheet, Index and Vicinity Map
- 2 Existing Conditions and Ownership
- 3 Proposed Conditions, Access and Project Components
- 4 Component 1 - Side Channel Construction
- 5 Component 2 - Backwater Channel Enhancement
- 6 Component 3 - Main Stem Margin LWD
- 7 Component 4 - Riparian Enhancement
- 8 Component 5 - Backwater Channel Construction
- 9 Component 6 - Apex Jams and Margin LWD
- 10 Typical Details

Preliminary
Not for Construction

G:\E-H\Haapa Lewis River_130201\Drawings\I\I_HAAPA_BASE.dwg

NO.	BY	DATE	REVISION DESCRIPTION

DF	MM,JE	GJ
DRAWN	DESIGNED	CHECKED
MM	9/17/13	13-02-01
APPROVED	DATE	PROJECT

Lower Columbia Fish Enhancement Group
 N. Lewis River - Haapa
 Fish Habitat Restoration Project

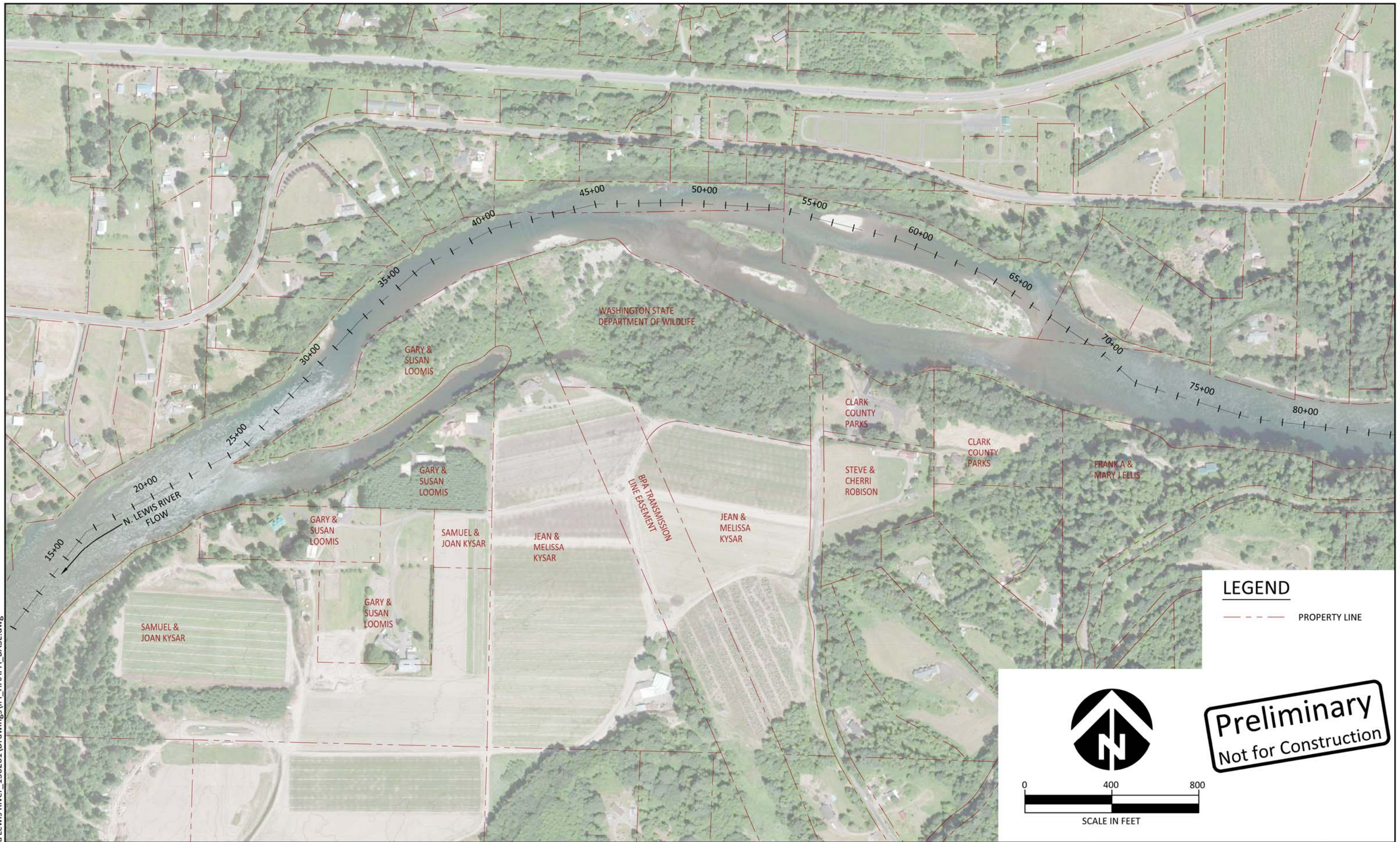


501 Portway Ave, Suite 101
 Hood River, OR 97031
 541.386.9003
 www.interfluve.com

COVER SHEET, INDEX
 AND VICINITY MAP

SHEET
 1 OF 10

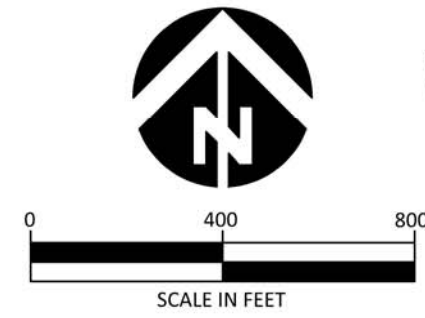
G:\E-H\Haapa Lewis River_130201\Drawings\JL_HAAPA_BASE.dwg



LEGEND

--- PROPERTY LINE

Preliminary
Not for Construction



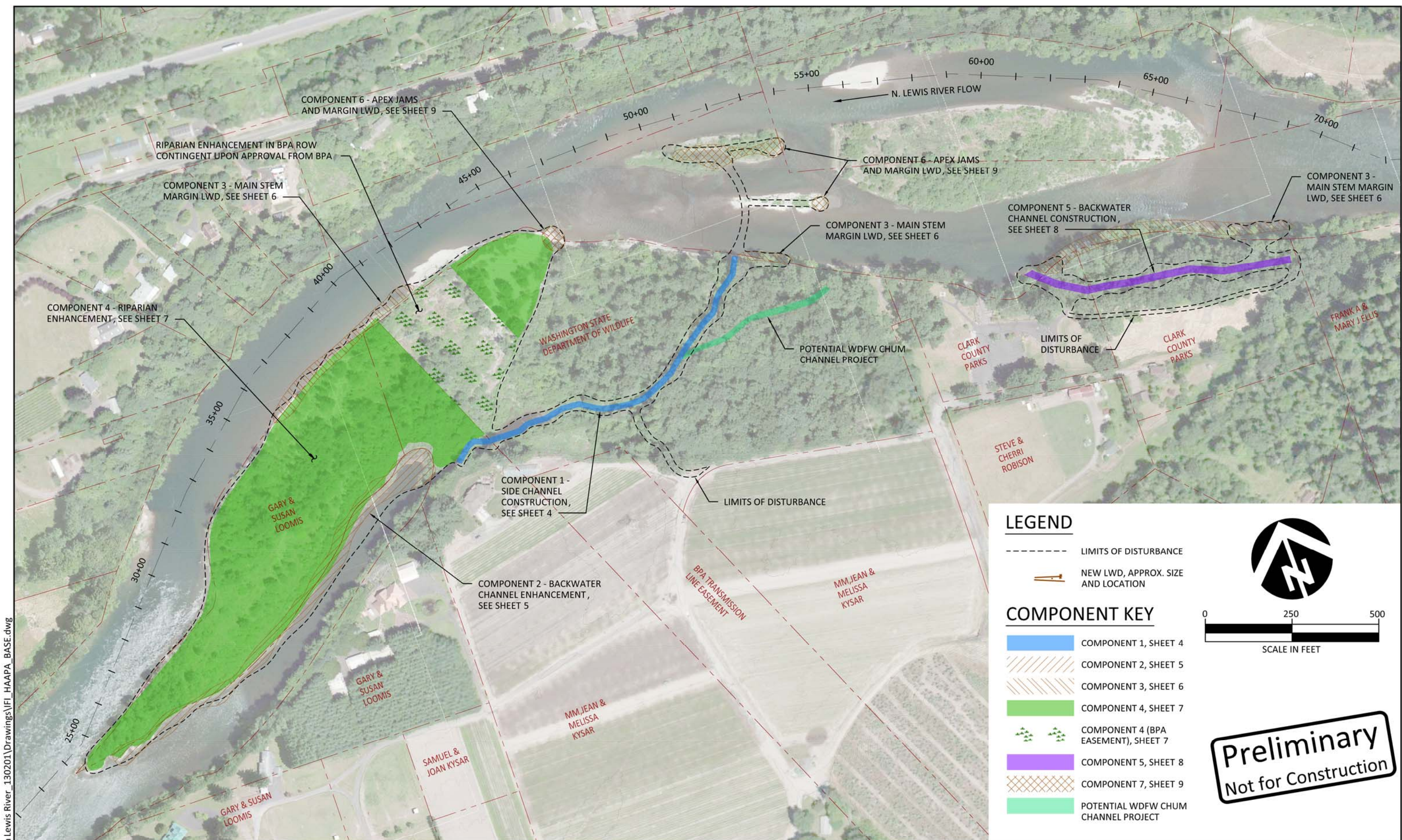
NO.	BY	DATE	REVISION DESCRIPTION

DF	MM,JE	GJ
DRAWN	DESIGNED	CHECKED
MM	9/17/13	13-02-01
APPROVED	DATE	PROJECT

Lower Columbia Fish Enhancement Group
N. Lewis River - Haapa
Fish Habitat Restoration Project

501 Portway Ave, Suite 101
Hood River, OR 97031
541.386.9003
www.interfluve.com

EXISTING CONDITIONS
AND OWNERSHIP

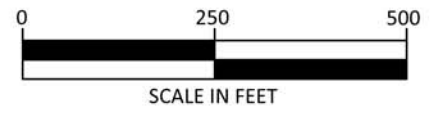


LEGEND

- LIMITS OF DISTURBANCE
- NEW LWD, APPROX. SIZE AND LOCATION

COMPONENT KEY

- COMPONENT 1, SHEET 4
- COMPONENT 2, SHEET 5
- COMPONENT 3, SHEET 6
- COMPONENT 4, SHEET 7
- COMPONENT 4 (BPA EASEMENT), SHEET 7
- COMPONENT 5, SHEET 8
- COMPONENT 7, SHEET 9
- POTENTIAL WDFW CHUM CHANNEL PROJECT



Preliminary
Not for Construction

G:\E-H\Haapa Lewis River_130201\Drawings\FL_HAAPA_BASE.dwg

NO.	BY	DATE	REVISION DESCRIPTION

DF	MM,JE	GJ
DRAWN	DESIGNED	CHECKED
MM	9/17/13	13-02-01
APPROVED	DATE	PROJECT

Lower Columbia Fish Enhancement Group
N. Lewis River - Haapa
Fish Habitat Restoration Project



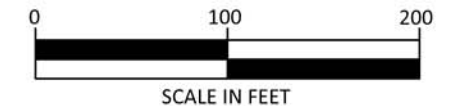
501 Portway Ave, Suite 101
Hood River, OR 97031
541.386.9003
www.interfluve.com

PROPOSED CONDITIONS, ACCESS
AND PROJECT COMPONENTS

SHEET
3 OF 10



PLAN

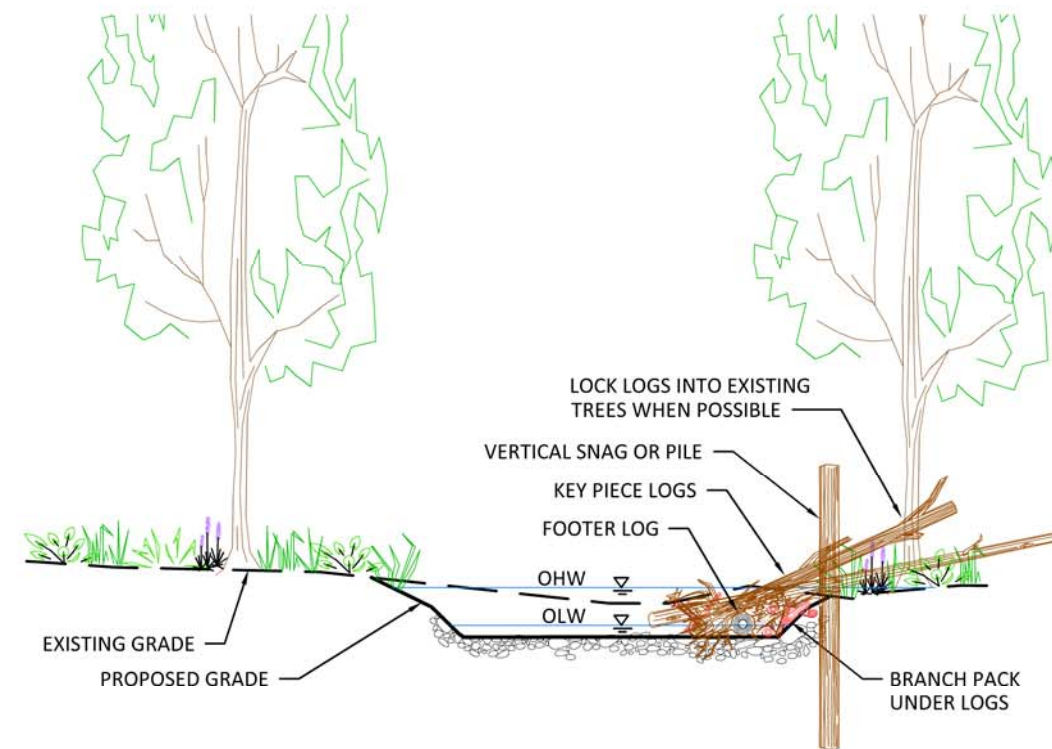


LEGEND

- NEW LWD, APPROX. SIZE AND LOCATION
- COMPONENT 1
- WDFW CHUM CHANNEL
- PROPOSED GRADING (1-FT CONTOURS)



KEY MAP
NOT TO SCALE



SECTION - CONSTRUCTED SIDE CHANNEL LWD
SCALE: 1" = 10'

Preliminary
Not for Construction

G:\E-H\Haapa Lewis River_130201\Drawings\IFL_HAAPA_BASE.dwg

NO.	BY	DATE	REVISION DESCRIPTION

DF	MM,JE	GJ
DRAWN	DESIGNED	CHECKED
MM	9/17/13	13-02-01
APPROVED	DATE	PROJECT

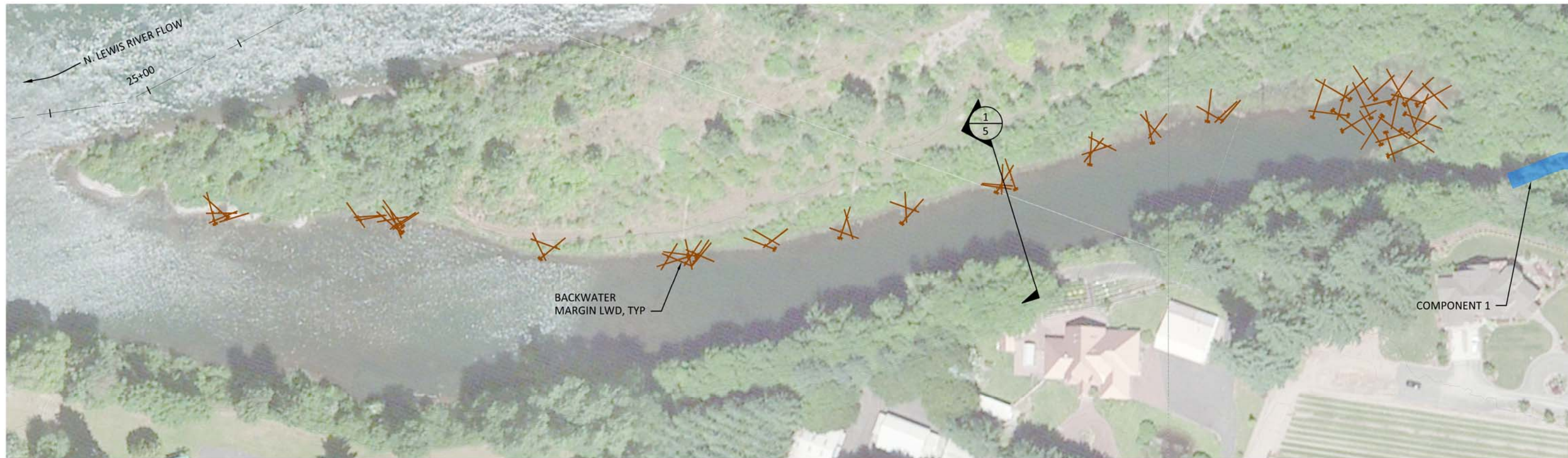
Lower Columbia Fish Enhancement Group
N. Lewis River - Haapa
Fish Habitat Restoration Project



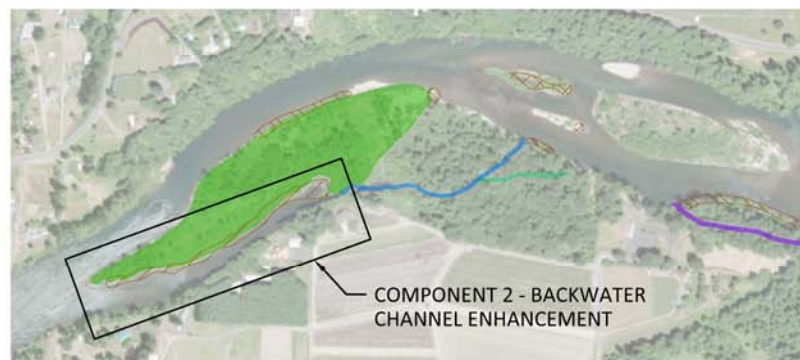
501 Portway Ave, Suite 101
Hood River, OR 97031
541.386.9003
www.interfluve.com

COMPONENT 1 - SIDE CHANNEL CONSTRUCTION

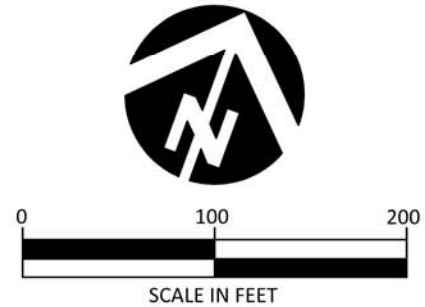
SHEET
4 OF 10



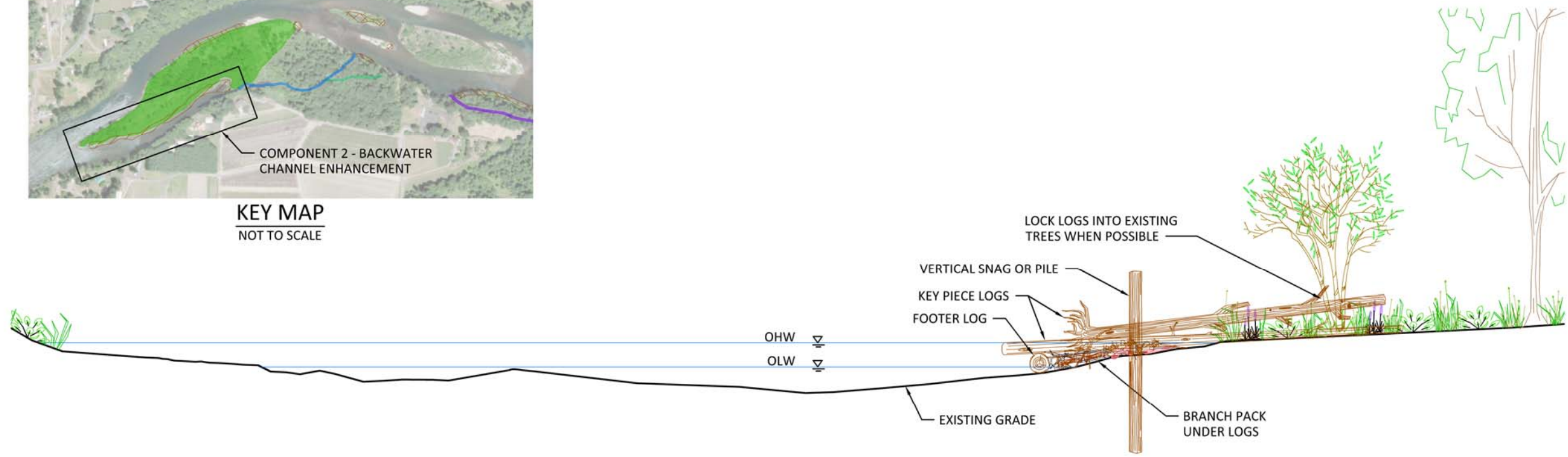
PLAN



KEY MAP
NOT TO SCALE



- LEGEND**
- NEW LWD, APPROX. SIZE AND LOCATION
 - COMPONENT 1



1
5 SECTION - BACKWATER ENHANCEMENT LWD
SCALE: 1" = 10'

Preliminary
Not for Construction

G:\E-H\Haapa Lewis River_130201\Drawings\IF_HAAPA_BASE.dwg

NO.	BY	DATE	REVISION DESCRIPTION

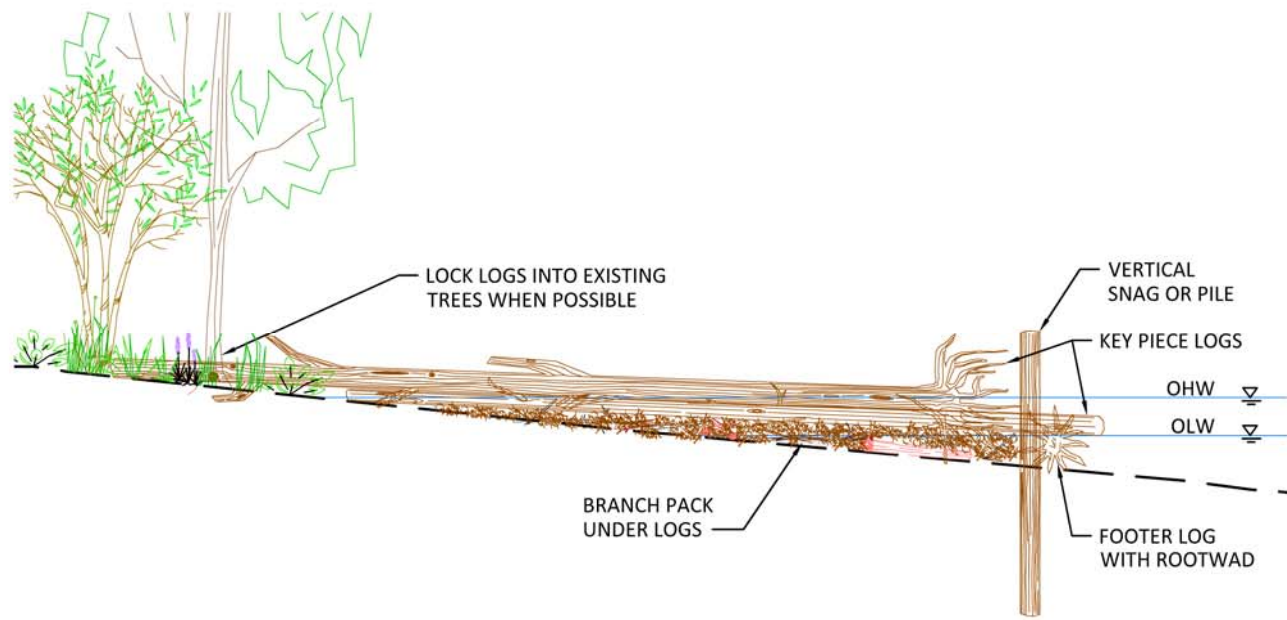
DF	MM,JE	GJ
DRAWN	DESIGNED	CHECKED
MM	9/17/13	13-02-01
APPROVED	DATE	PROJECT

Lower Columbia Fish Enhancement Group
N. Lewis River - Haapa
Fish Habitat Restoration Project

501 Portway Ave, Suite 101
Hood River, OR 97031
541.386.9003
www.interfluve.com

COMPONENT 2 - BACKWATER
CHANNEL ENHANCEMENT

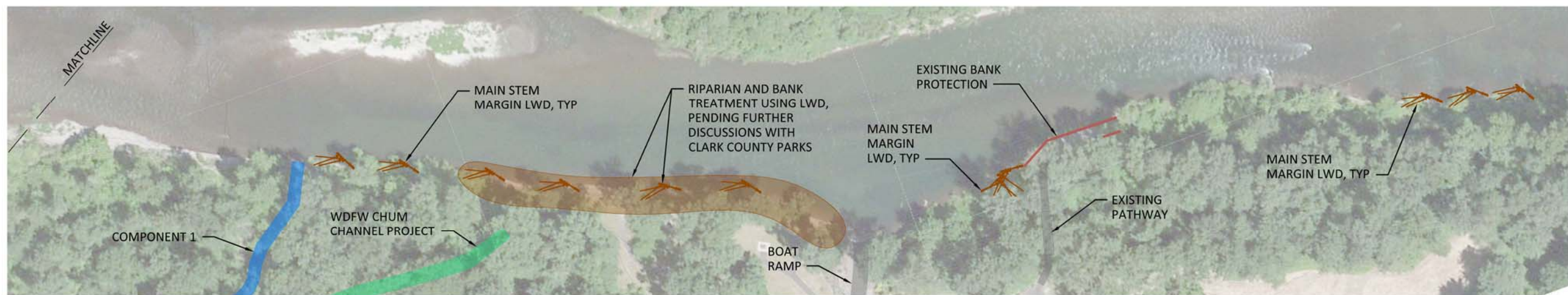
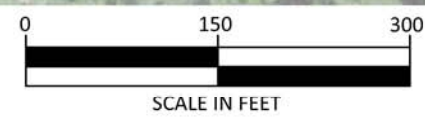
SHEET
5 OF 10



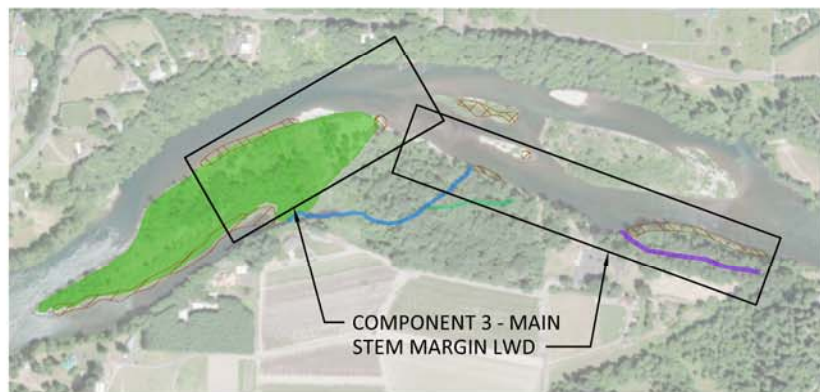
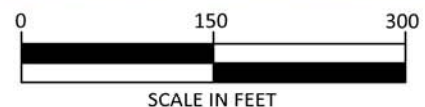
1
6 SECTION - MAIN STEM MARGIN LWD
SCALE: 1" = 10'



PLAN



PLAN



KEY MAP
NOT TO SCALE

LEGEND

- NEW LWD, APPROX. SIZE AND LOCATION
- COMPONENT 1
- WDFW CHUM CHANNEL PROJECT
- RIPARIAN AND BANK TREATMENT PENDING FURTHER DISCUSSION

Preliminary
Not for Construction

G:\E-H\Haapa Lewis River_130201\Drawings\FI_HAAPA_BASE.dwg

NO.	BY	DATE	REVISION DESCRIPTION

DF	MM,JE	GJ
DRAWN	DESIGNED	CHECKED
MM	9/17/13	13-02-01
APPROVED	DATE	PROJECT

Lower Columbia Fish Enhancement Group
N. Lewis River - Haapa
Fish Habitat Restoration Project



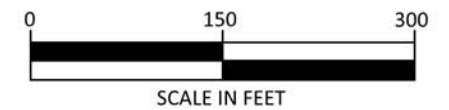
501 Portway Ave, Suite 101
Hood River, OR 97031
541.386.9003
www.interfluve.com

COMPONENT 3 - MAIN
STEM MARGIN LWD

SHEET
6 OF 10







PLAN



KEY MAP
NOT TO SCALE

ZONED PLANTING PLAN
AND SPECIES LISTS TO BE
COMPLETED PENDING
VEGETATION SURVEY

LEGEND

-  NEW LWD, APPROX. SIZE AND LOCATION
-  COMPONENT 1
-  COMPONENT 4
-  COMPONENT 4 (BPA EASEMENT)

Preliminary
Not for Construction

G:\E-H\Haapa Lewis River_130201\Drawings\FL_HAAPA_BASE.dwg

NO.	BY	DATE	REVISION DESCRIPTION

DF	MM,JE	GJ
DRAWN	DESIGNED	CHECKED
MM	9/17/13	13-02-01
APPROVED	DATE	PROJECT

Lower Columbia Fish Enhancement Group
N. Lewis River - Haapa
Fish Habitat Restoration Project

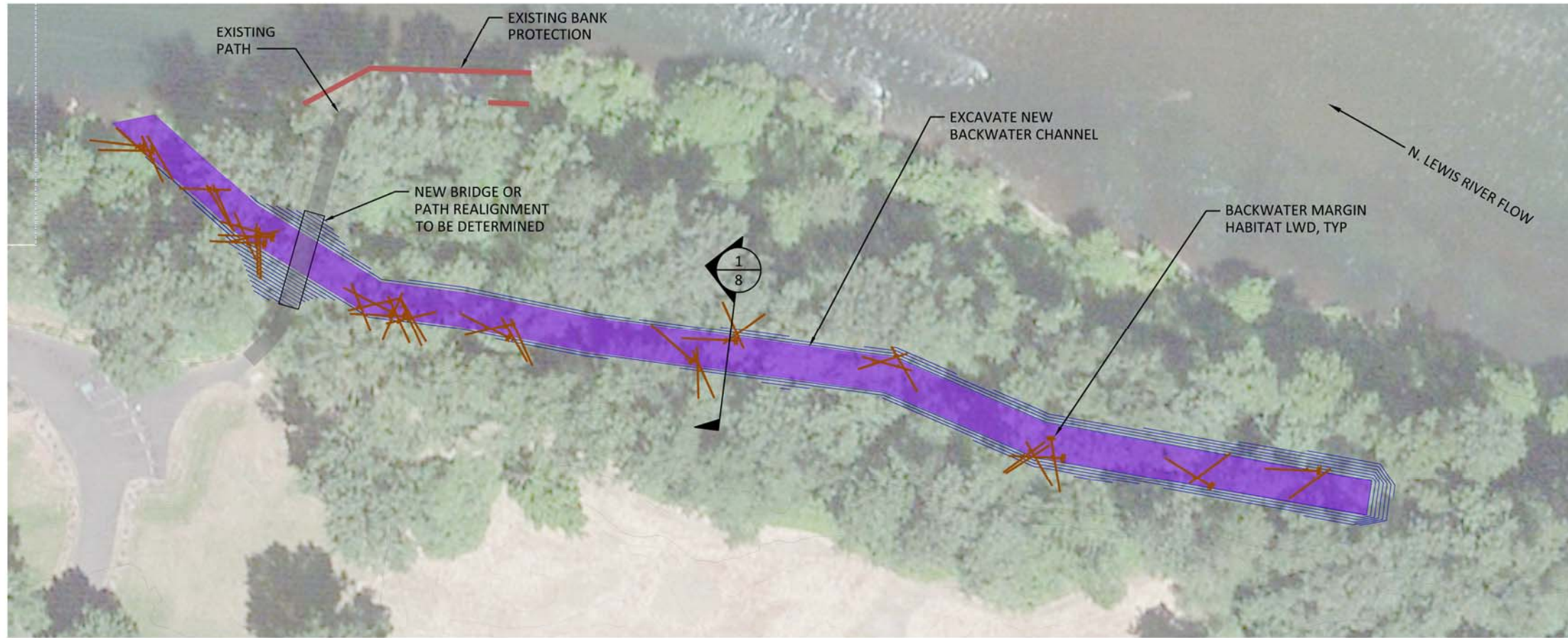


501 Portway Ave, Suite 101
Hood River, OR 97031
541.386.9003
www.interfluve.com

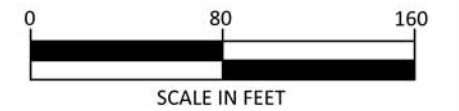
**COMPONENT 4 -
RIPARIAN ENHANCEMENT**

SHEET
7 OF 10




G:\E-H\Haapa Lewis River_130201\Drawings\FI_HAAPA_BASE.dwg

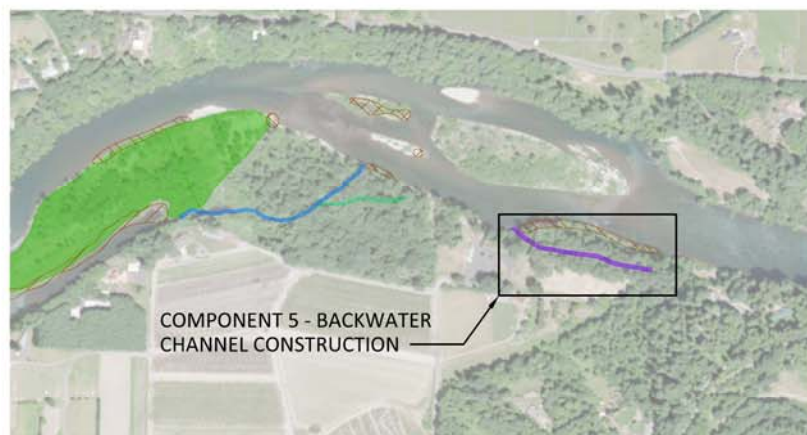


PLAN

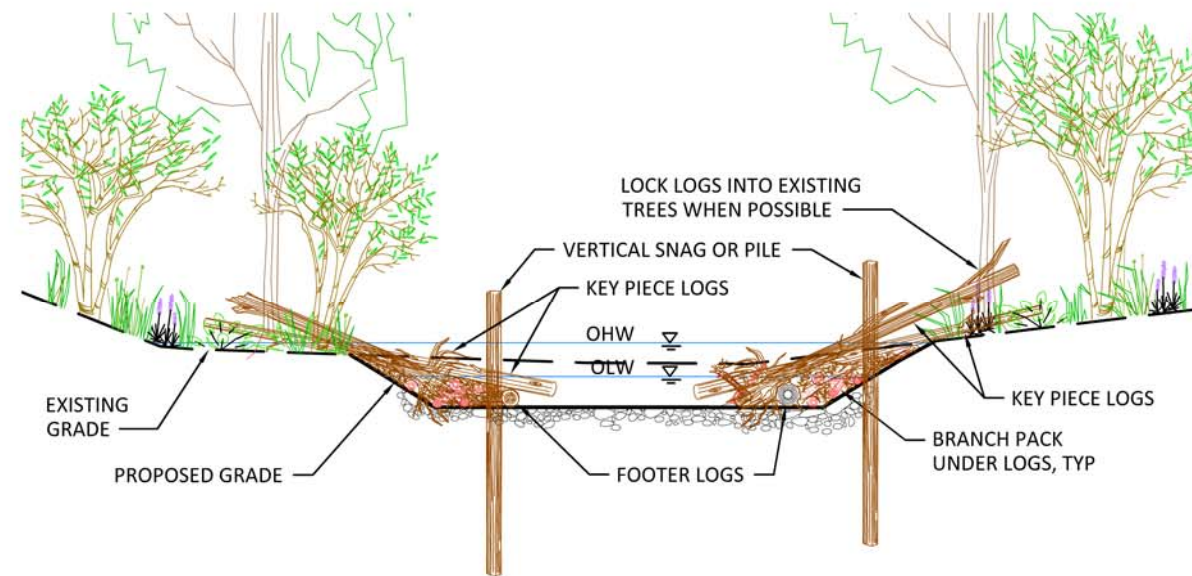


LEGEND

-  NEW LWD, APPROX. SIZE AND LOCATION
-  COMPONENT 5
-  PROPOSED GRADING (1-FT CONTOURS)



KEY MAP
NOT TO SCALE



SECTION - BACKWATER CHANNEL CONSTRUCTION
SCALE: 1" = 10'

Preliminary
Not for Construction

NO.	BY	DATE	REVISION DESCRIPTION

DF	MM,JE	GJ
DRAWN	DESIGNED	CHECKED
MM	9/17/13	13-02-01
APPROVED	DATE	PROJECT

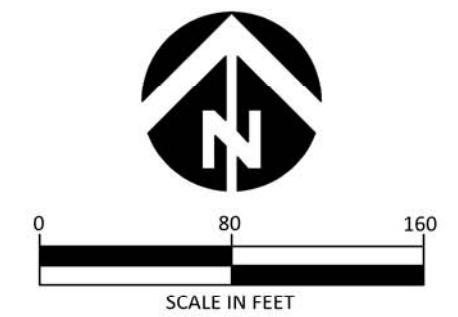
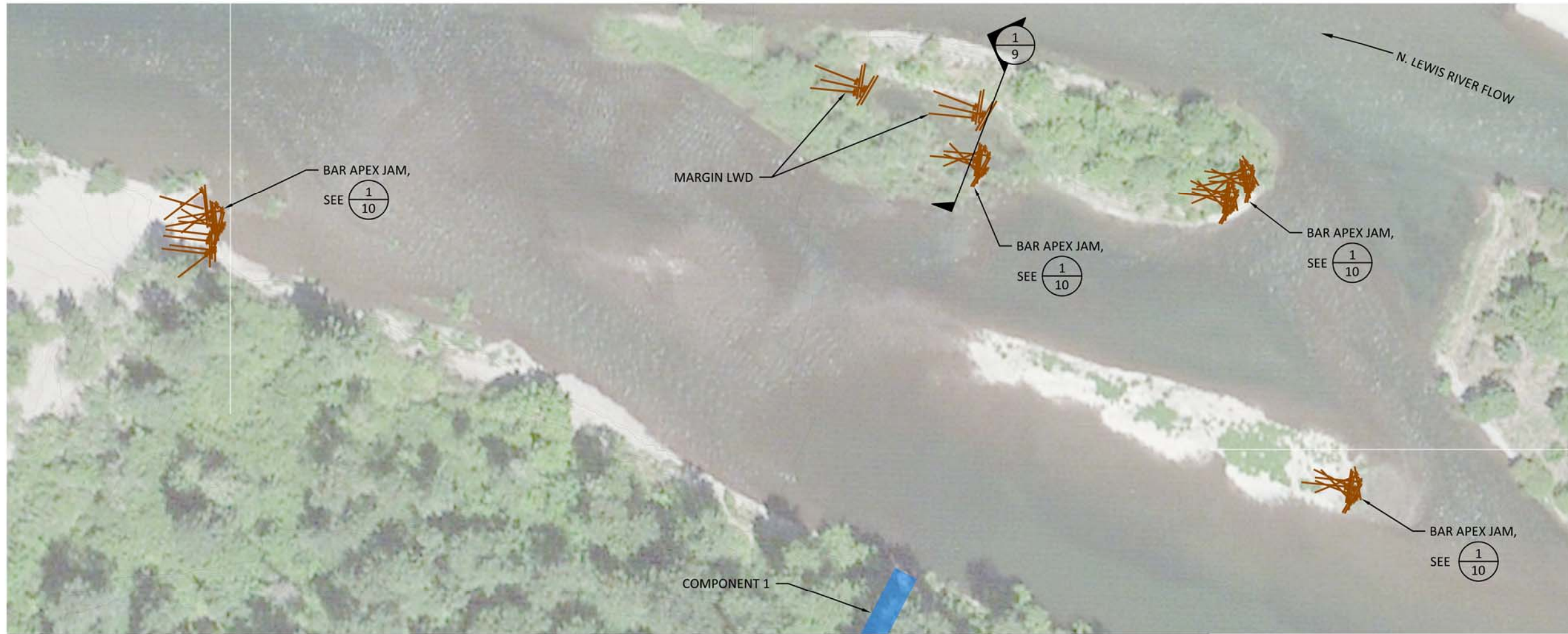
Lower Columbia Fish Enhancement Group
N. Lewis River - Haapa
Fish Habitat Restoration Project



501 Portway Ave, Suite 101
Hood River, OR 97031
541.386.9003
www.interfluve.com

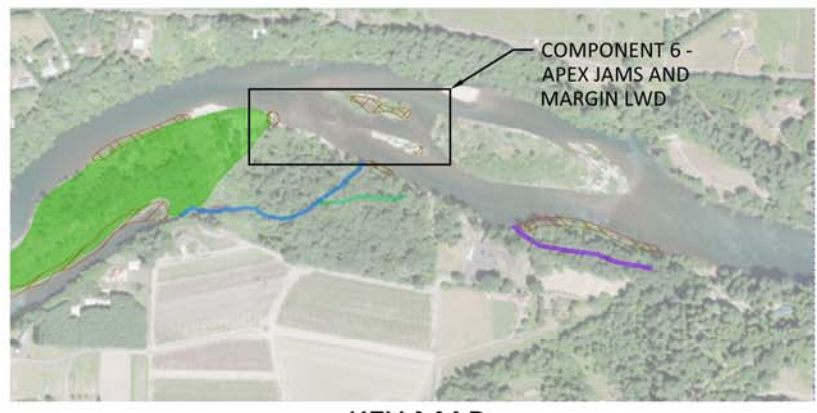
COMPONENT 5 - BACKWATER
CHANNEL CONSTRUCTION

SHEET
8 OF 10



- LEGEND**
-  NEW LWD, APPROX. SIZE AND LOCATION
 -  COMPONENT 1

Preliminary
Not for Construction



KEY MAP
NOT TO SCALE

G:\E-H\Haapa Lewis River_130201\Drawings\FI_HAAPA_BASE.dwg

NO.	BY	DATE	REVISION DESCRIPTION

DF	MM,JE	GJ
DRAWN	DESIGNED	CHECKED
MM	9/17/13	13-02-01
APPROVED	DATE	PROJECT

Lower Columbia Fish Enhancement Group
N. Lewis River - Haapa
Fish Habitat Restoration Project

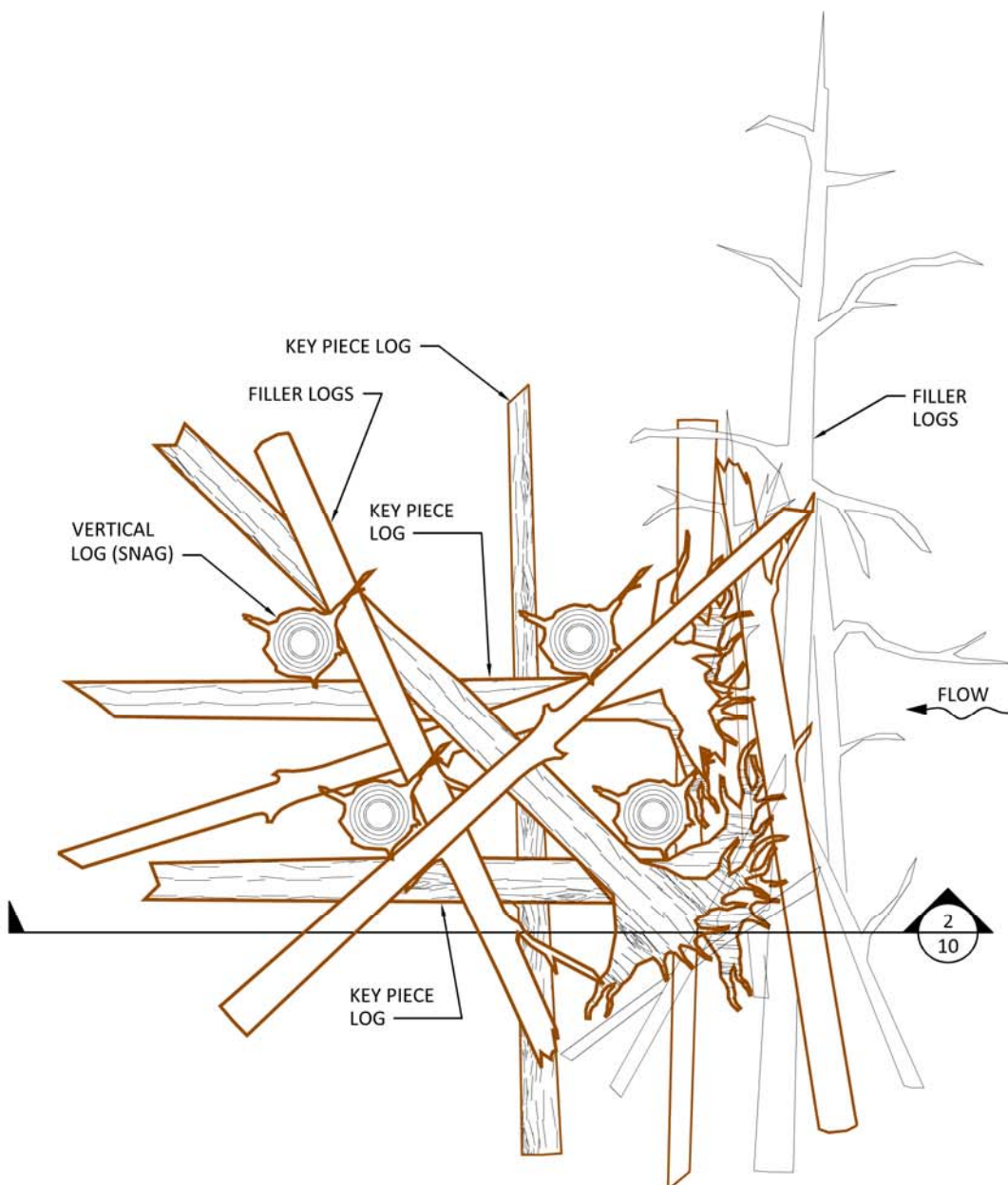


501 Portway Ave, Suite 101
Hood River, OR 97031
541.386.9003
www.interfluve.com

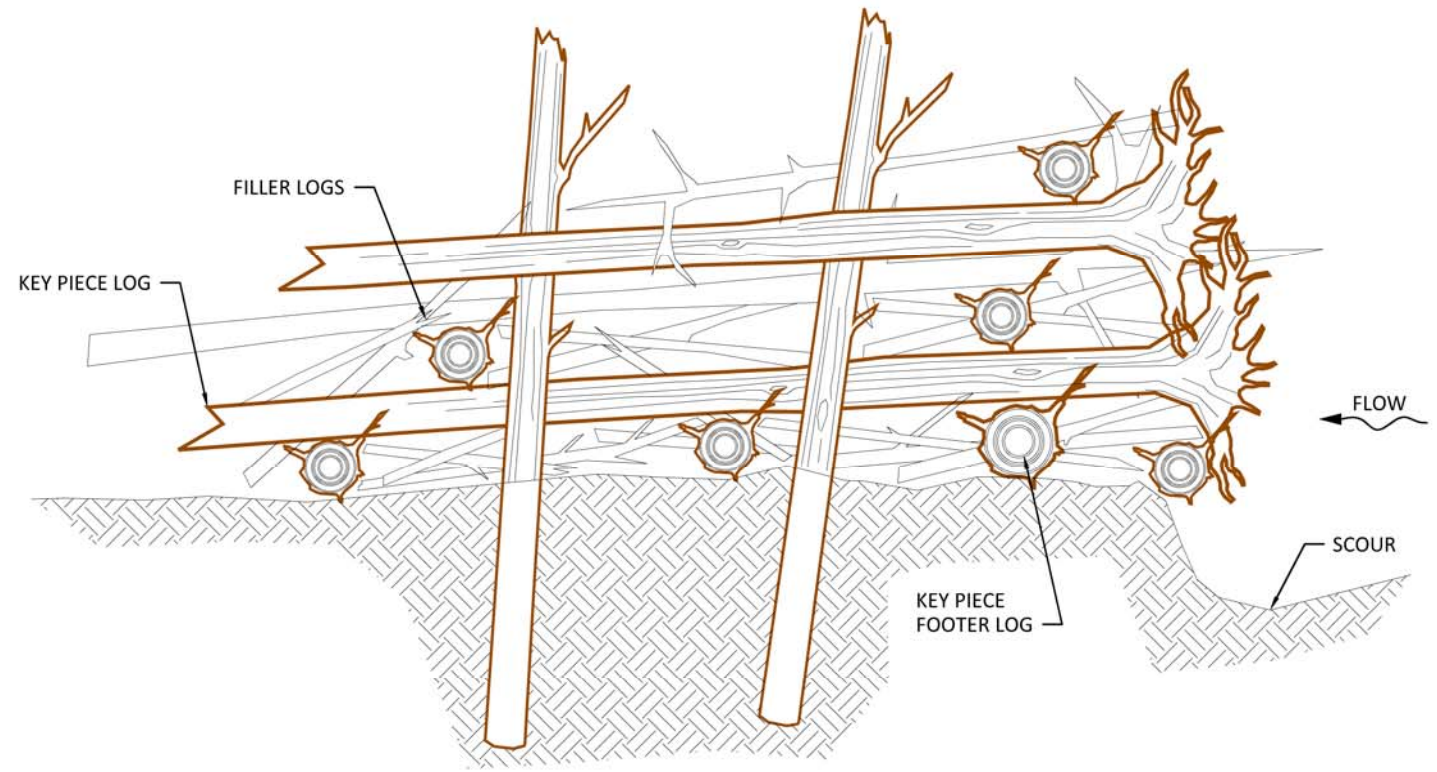
**COMPONENT 6 - APEX
JAMS AND MARGIN LWD**

SHEET
9 OF 10

G:\E-H\Haapa Lewis River_130201\Drawings\FI_HAAPA_BASE.dwg



1
10 PLAN - TYPICAL BAR APEX LOG JAM
NOT TO SCALE



NOTE: ANCHORING AND BALLASTING TECHNIQUES TO BE DETERMINED.

2
10 SECTION - TYPICAL BAR APEX LOG JAM
NOT TO SCALE

Preliminary
Not for Construction

NO.	BY	DATE	REVISION DESCRIPTION

DF	MM,JE	GJ
DRAWN	DESIGNED	CHECKED
MM	9/17/13	13-02-01
APPROVED	DATE	PROJECT

Lower Columbia Fish Enhancement Group
N. Lewis River - Haapa
Fish Habitat Restoration Project



501 Portway Ave, Suite 101
Hood River, OR 97031
541.386.9003
www.interfluve.com

TYPICAL DETAILS

SHEET
10 OF 10