

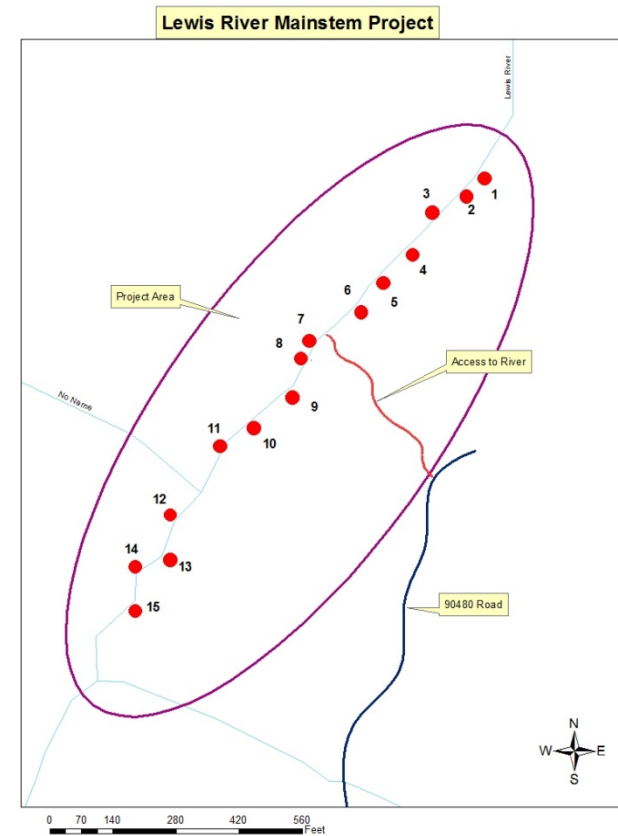


# Forest Service Projects

2015



# Lewis River Mainstem Restoration

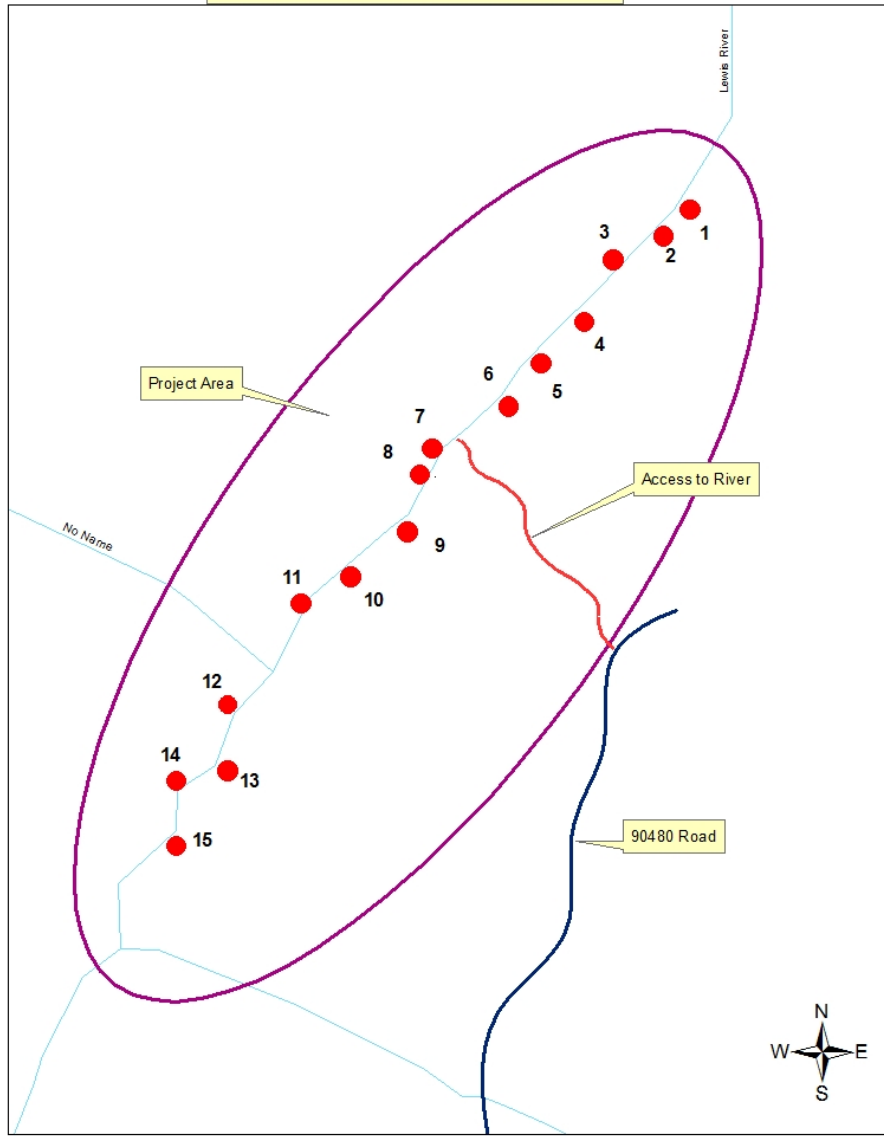




# Project Description

- Restore a section of the Mainstem Lewis River with Large Woody Material
- Target Species-Coho Salmon, Chinook Salmon, Steelhead Trout
- Project Length- approximately 1000 feet
- Approximately 15 structures composed of 200 pieces of LWM with rootwads

## Lewis River Mainstem Project



Slow water area of mainstem

2014 funded projects upstream & downstream of this section

Juveniles- margin structures

Spawning-material and habitat

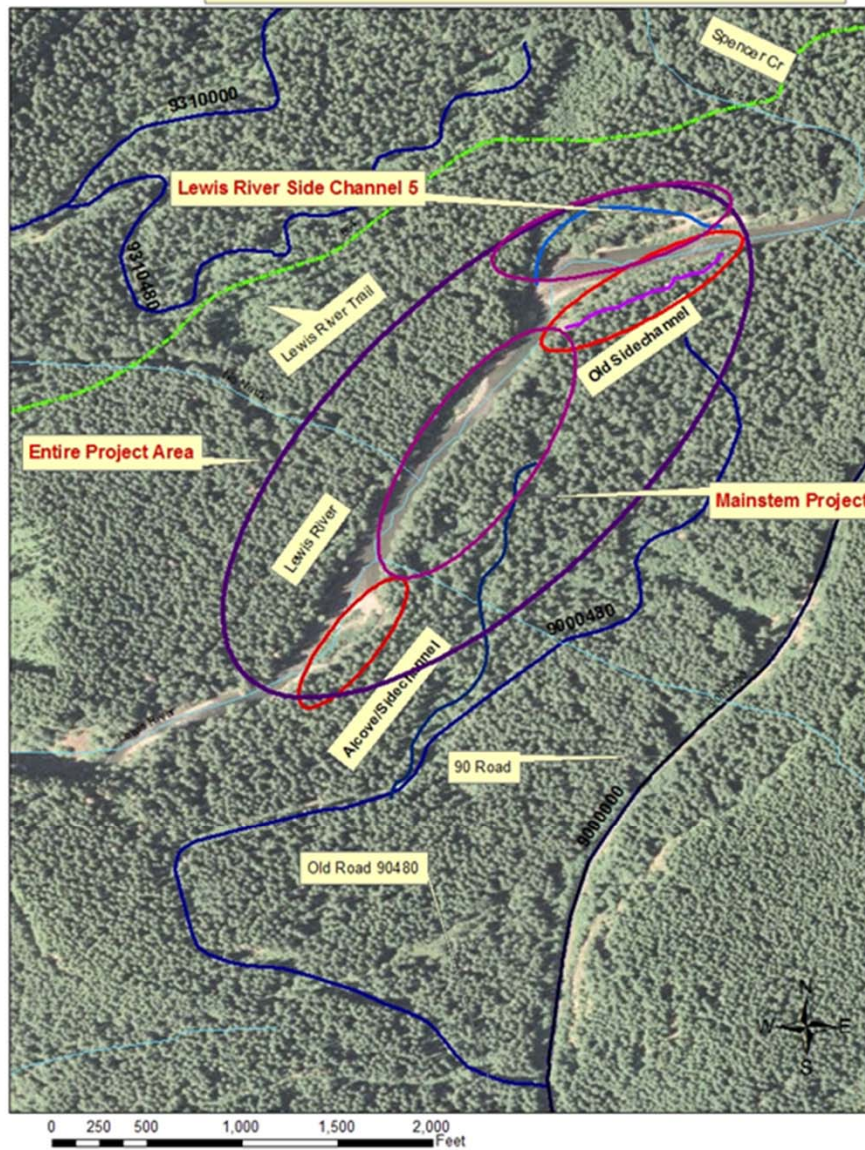
Stream surveys

4,000 feet downstream of Crab Creek Acclimation Pond

# Lewis River Mainstem Project



# Lewis River side channel and mainstem project



## Lewis River Mainstem Project Area



## Lewis River Mainstem Project Area





## Lewis River Mainstem Project Area



# Project Budget

Action	ACC Funds	Partner Funds	Total
NEPA	\$12,000	\$12,000	
Final Designs and Project Mgmt and Contract Administration	\$14,000	\$16,000	
Equipment Contract	\$41,000		
Materials	\$1,000	\$40,000	
Monitoring	\$4,000	\$4,000	
<b>Total</b>	<b>\$72,000</b>	<b>\$72,000</b>	<b>\$144,000</b>

Opportunity to save \$6,000 on NEPA if both projects are funded



# Project Partners

Partner	Contribution	Funds
Forest Service	Project development, Contracting, Permitting, Monitoring	\$29,000 In-kind
	Trees	\$40,000 In-kind
Mt. St. Helens Institute	Monitoring	\$3,000 In-kind
Clark Skamania Fly Fishers	Spawning Surveys	

# Questions

