



# Forest Service Projects

2015



# Lewis River Side Channel 5 Restoration





# Project Description

- Restore an existing old side channel by removing sediment deposits at the inlet and outlet, excavating excess deposited material, and adding Large Woody Material.
- Obtain an in depth site survey using a total station to map the entire side channel, including topographic elevation data to complete project design parameters
- Project length – Approximately 800 feet-excavated to proper grade
- Approximately 100 pieces of LWM in 10 structures
- Target Species-Spring Chinook (acclimation pond fish), Coho Salmon, Steelhead

### Lewis River Side Channel 5



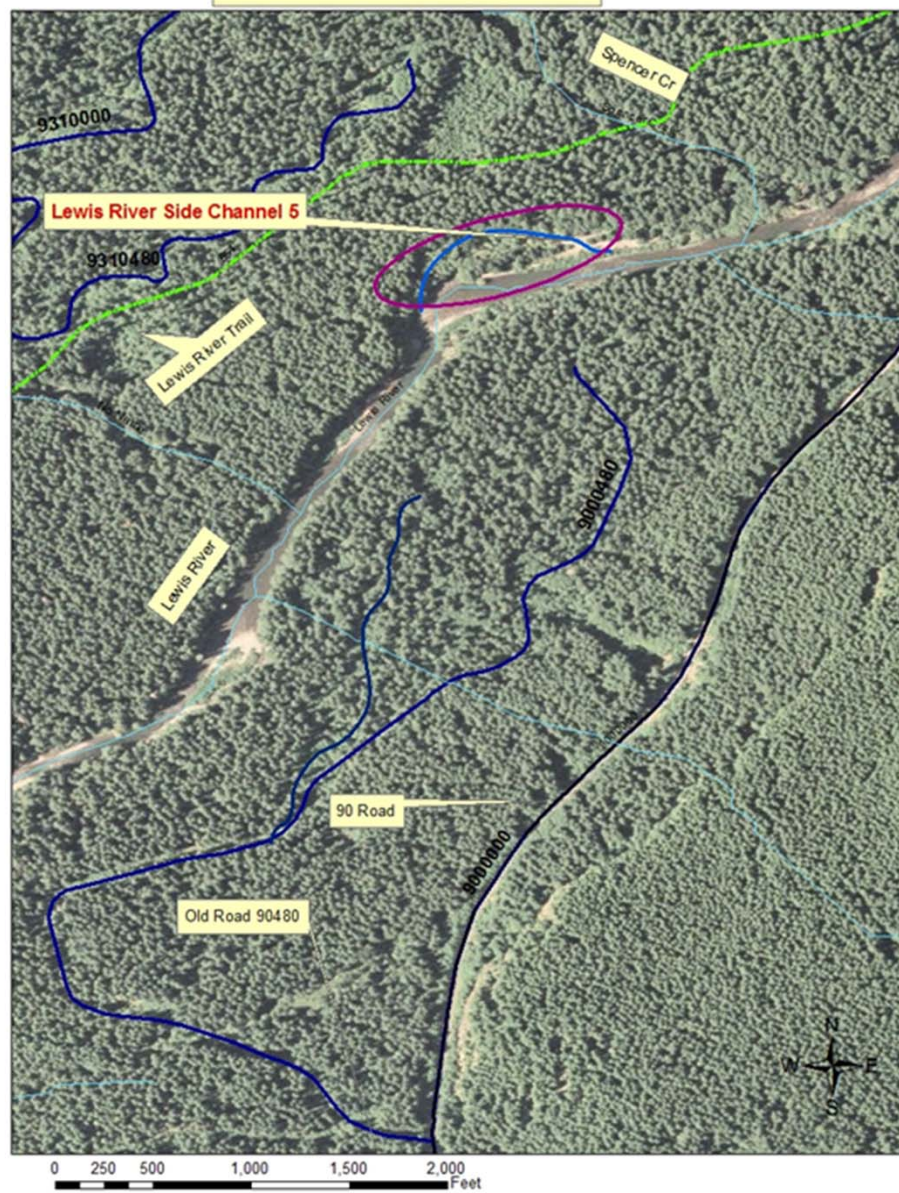
Restore scarce side channel habitat in the Lewis River

2014 funded projects upstream & downstream of this section

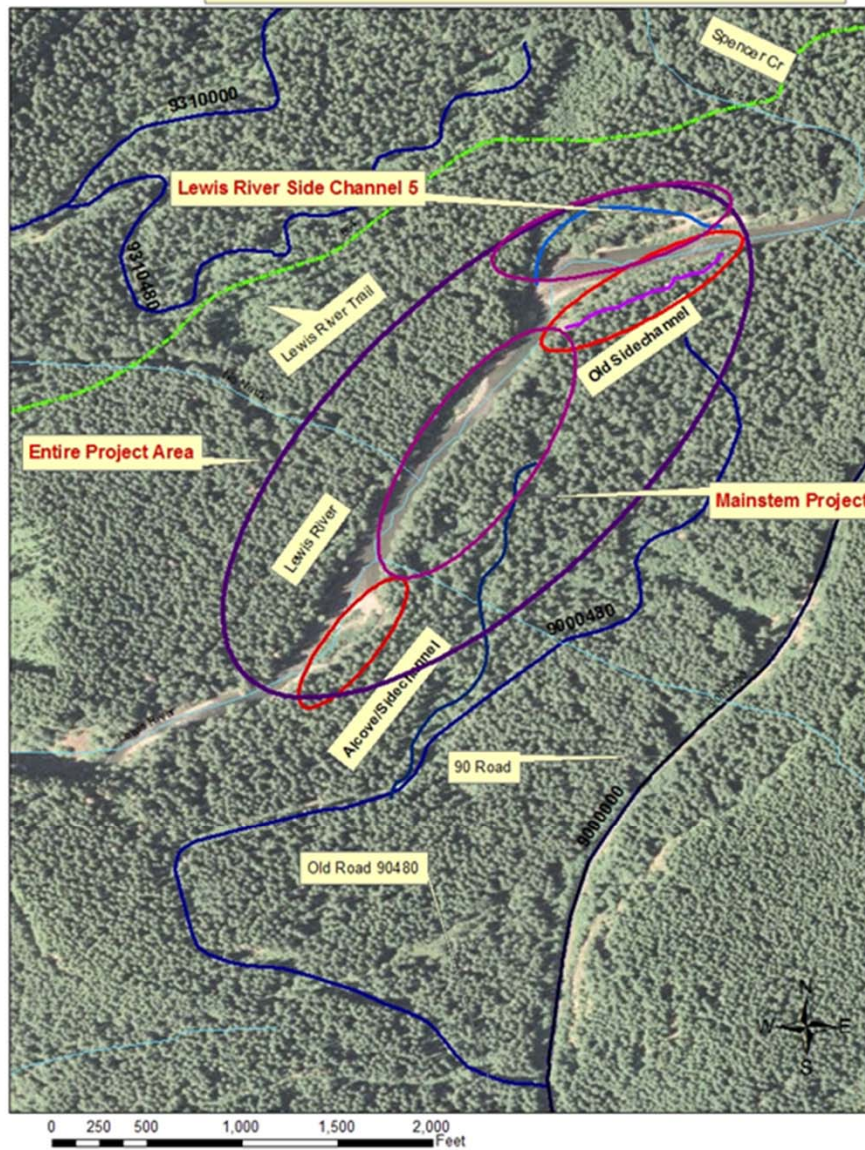
Juveniles-overwintering and rearing habitat

4,000 feet downstream of Crab Creek Acclimation Pond

### Lewis River Side Channel 5



### Lewis River side channel and mainstem project



## Lewis River Side Channel 5 Project



## Lewis River Side Channel 5 Project





## Lewis River Side Channel 5 Project



# Project Budget

Action	ACC Funds	Partner Funds	Total
NEPA	\$12,000	\$12,000	
Final Designs and Project Mgmt and Contract Administration	\$14,000	\$16,000	
Topo Survey	\$13,000		
Equipment Contract	\$44,000		
Materials	\$1,000	\$20,000	
Monitoring	\$4,000	\$4,000	
<b>Total</b>	<b>\$88,000</b>	<b>\$52,000</b>	<b>\$140,000</b>

Opportunity to save \$6,000 on NEPA if both projects are funded



# Project Partners

Partner	Contribution	Funds
Forest Service	Project development, Contracting, Permitting, Monitoring	\$29,000 In-kind
	Trees	\$20,000 In-kind
Mt. St. Helens Institute	Monitoring	\$3,000 In-kind
Clark Skamania Fly Fishers	Spawning Surveys	

# Questions

