

Lewis River Fish Passage Subcommittee Meeting

Agenda

Thursday February 8, 2024

2:30 to 4:30 pm

Teams

Introductions, Review Agenda and Meeting Notes <ul style="list-style-type: none">Meeting notes (November, December, January)	All
Design Team Updates	Karchesky and Olson
Scope of Work: 2024 Swift FSC Collection Efficiency and Fish Channel Assessment Study <ul style="list-style-type: none">Comments/QuestionsRequest for Decision document / ACC support	Karchesky
60% Design Review – Questions/Comments/Updates	All
Yale Spillway Net	All
Next Steps <ul style="list-style-type: none">Continue 60% design reviewFish Transport Plan/Marking Strategies – Alternatives development	All
Next FPS meeting – March 17th Teams Agenda	All
Adjourn	

Microsoft Teams meeting

Join on your computer, mobile app or room device

[Click here to join the meeting](#)

Meeting ID: 274 390 173 526

Or call in (audio only)

[+1 563-275-5003,,892083208#](#) United States, Davenport

Phone Conference ID: 892 083 208#

**FINAL Meeting Notes
Lewis River License Implementation
Fish Passage Subcommittee Meeting
February 8, 2024
2:30 PM – 4:30 PM
MS Teams Meeting**

Attendees

Christina Donehower – Cowlitz Indian Tribe	Jeffrey Garnett – USFWS
Steve West – LCFRB	Josua Holowatz – WDFW
Melissa Jundt – NOAA Fisheries	Aaron Roberts – WDFW
Beth Bendickson – PacifiCorp	Doug Robison – WDFW
Chris Karchesky – PacifiCorp	Keely Murdoch – Yakama Nation Fisheries
Erik Lesko – PacifiCorp	Bill Sharp – Yakama Nation Fisheries
Todd Olson – PacifiCorp	Pad Smith – WDFW

Introductions, Review Agenda and Meeting Notes

Josua Holowatz, Washington Department of Fish and Wildlife (WDFW), reviewed the meeting agenda.

Design Team Updates

Todd Olson, PacifiCorp, reported that now that the weather is getting better, a surveying team will soon start for the two upstream projects. A Geotech plan is being developed for FERC Dam Safety approval to conduct core drilling at the project sites.

2024 Fish Behavior Study to Inform Yale Downstream Design

Chris Karchesky, PacifiCorp, reminded the Fish Passage Subcommittee (FPS) that following the January 11, 2024 FPS meeting, PacifiCorp sent out a draft Scope of Work outlining the effort currently being planned as part of the Swift Downstream Collection Efficiency Study. Karchesky also reminded the FPS that the intent for this year was to allocate resources and focus effort on evaluating the recent modifications made to the Swift FSC fish collection channel and whether smoothing the hydraulics within the channel have improved fish passage success. He asked if folks had any initial feedback and/or questions on the Scope of Work that was sent out. If there is general consensus for this effort, the next step will be to pull together a draft Decision Request for FPS review, which can then be submitted to the ACC for review and approval. Once approved, this Decision Request form can be completed and put in the notes “for the record.” Karchesky noted that this plan was discussed at the ACC meeting earlier that day. Josua Holowatz, WDFW, asked if FPS members had any comments on the scope of Work, should they include in the comment matrix form or just email them? Karchesky said email is fine, and he would include them into the Comment Matrix. Karchesky also noted he wants to take advantage of spring Chinook smolts coming out in March, and so time is of the essence here. He requested that if the group had any

formal comments to please submit them in the next few days. Karchesky said we are working on equipment needs and anticipate starting to tag fish by March 15. Holowatz asked if the reservoir would be full by the Memorial Day holiday, as usual, and would it effect the study there? Karchesky replied that it shouldn't affect the study. The Swift FSC is currently operating. Olson added that dam safety will finish working on the Swift Spillway by March 15, and Operations will begin refilling the reservoir at that time. Depending on the inflows in late/early April, we should be able to get the reservoir filled back up. Holowatz said he knows that the Utility has done a lot of work at the Swift FSC and knows that the work planned this spring will help with the design of the Yale Downstream Facility. We think it's important to see where we missed capture in the fish collection channel and whether the recent improvement have helped. We want to be really clear about questions being asked and having the comment matrix will help. Karchesky agreed. There is a lot of good information that can be gained from the modifications made to the Swift FSC this past summer. In fact, we are already seeing a lot more fish coming out this winter. This may be due to the high flow events we've had, or due to improved FSC hydraulics, or a combination of both. It's been kind of unprecedented at this time of year. Holowatz said he'd like to see the behavior of kelts (life history) with these changes. How do adults behave? Karchesky responded that we have recapture rates and numbers from previous year's to compare.

Karchesky ended the conversation with adding that he would send out a reminder to the group after the meeting for responding to the Scope of Work and would consolidate any comments received into the Comment Matrix for review.

60% Design Review – Questions/Comments/Updates

Olson noted comments were received earlier this week from NMFS, WDFW, and USFWS identifying items that would be needed to complete their review of the 60% designs. Karchesky added these items have been submitted to the Design Team and they are reviewing them now. He noted that the only initial question the Design Team had was the comment received that had to do with the Design Team “commitment” for a handsfree visual-type sorting facility and to address draft tube injury of adults if that issue was found to be significant. He asked Holowatz what they were looking for as far as a response on those items. Holowatz deferred to Melissa Jundt, NOAA Fisheries, once she gets on the call, but added that adults being drawn into the powerhouse draft tubes and that there can be injuries.

Karchesky also noted that some 60% design related comments were received from WDFW prior to the December 14, 2023 presentation. He said that those comments were included in the Comment Matrix along with responses. There were also additional columns added to the Comment Matrix to help work through the comments and determine if the responses resolved the comments, or if additional discussion was needed. Did folks have an opportunity to take a look at it? What are the thoughts on how to move through the process? He was curious if there were any initial comments. No comments were provided.

Regarding the “commitment” question in the comments they sent out earlier, Jundt would like to see a discussion on “we might do this or that.” Regarding the possible draft tube injury item, Olson said that made sense. The discussion might be along the lines of let's build these things but if we're seeing an issue, it needs to be addressed. Important to know what triggers future action? We should talk about it. Is it injury to two fish or 100 fish? Let's identify the issue and track our discussion

on how to resolve it so the “future us” have a history of what we did to resolve things and our thought process on it.

Doug Robison, WDFW, asked if there was any anticipated timeframe on when the design team would respond? Olson said that Karchesky and the Design Team have weekly meetings and this information was shared with them. We’ll work towards getting information back by the March meeting, if possible. This would likely be for some things but not everything. The Design Team knows it’s high priority. Robison asked when the 45-day review process would start. Olson said when we have a work product that is ready for review, Beth Bendickson, PacifiCorp, will send it out with a due date. It will likely be done in pieces as the team gets things prepared. Robison asked if each piece will have a 45-day review process or will it be one 45-day process for everything? Olson replied that each submittal would have 45 days. The intent is to move things along.

Jeff Garnett, USFWS, said it makes sense for each incremental piece that comes up. He would caution, though, that some of the discreet pieces may tie into each other. If they approve one piece, we may need to go back and “turn some dials” on a piece we already commented on. Olson understood, the goal is that all pieces get approved in the end. If we have to make adjustments along the way, we can and provide the FPS additional review time for the change. Holowatz asked if each facility was considered a piece? Olson said the design team will let us know. Robison added that we’re trying to make our best effort on this. There are a lot of pieces. Olson said the design team can see if some things could be grouped together. They don’t want to work on one piece and then have to deal with something in another area and then jump back to another. Naturally, some things are going to group together. This is “to be determined.” Robison appreciated that.

Holowatz echoed that we need more drawings to conceptualize things. Olson acknowledged that is the interest.

Yale Spillway Net

Karchesky walked through a few slides that showed historic spill events at Yale Dam that required the existing spillway barrier net to be lowered (any spills greater than 6,000 cfs). Holowatz asked about the other barrier net at the intake that had broken free during the 2022 fish behavior study. Jundt also wanted to know the performance of the spillway net and asked if there was a receiver behind it during the 2023 fish behavior study to see if there were holes or leakage? Karchesky replied, no. Although during the 2022 fish behavior study when there were four distinct spill events while tagged fish were in the forebay, there were a number of fish detected to have passed through the spillway while the barrier net was still up and in position. Holowatz asked about net maintenance. The net is inspected twice a year with divers that look for holes, etc. These events generally occur once in the early spring prior to migration season and once again in the summer so any repairs can be complete before fall.

The group thought the information was helpful.

Someone asked about the “yellow” line in the slide. Karchesky said it means the existing net remains in place.

Karchesky said that due to Dam Safety’s probably maximum flood (PMF) study on the spillway, it’s highly likely we’ll have to add another spillway bay\gate at Yale Dam. If we do that, we may have to change the spillway net to a different configuration to accommodate the new bay.

Fish Transport Plans

Karchesky said PacifiCorp emailed the 2012 Transport plans as written by Frank Shrier, PacifiCorp, in 2009 to the FPS on January 30, 2024. As a reminder, these plans were “interim” because they are intended to change over time. For example, integration of late coho upstream was a change that was made. Also, these annual changes are now tracked through the AOP process and not the transport plans, so these are fairly old documents and haven’t been updated in a long time. Could we use these plans as a starting point for including the additional transport facilities? What information needs to be updated or added? He asked if anyone had a chance to look through them as he's looking for feedback.

Holowatz said he did take a look at them and that there is a lot of old information in there (e.g., reference to “acclimation pond” for one). He also suggested having another discussion internally and also with the ACC. We may want to look at including summer steelhead. Maybe not specify winter or summer, just steelhead.

Robison asked about a timeline. Holowatz to Karchesky, what are you thinking of as far as timeline? Karchesky said the transport plans need to be completed before the new fish passage facilities go online. We need to see what the plans have in them and what additional information needs to go in there to identify various items (species, etc.), and then it becomes topics of information that we can go through and work towards developing an updated plan for review. It’s important to capture what folks want to have in there, or maybe it’s better suited for an item to go elsewhere (M&E, AOP, etc.). From a planning standpoint, we have other plans that also need revision (M&E plan, etc.). Robison said he will make sure to get it into the queue. Karchesky recognizes that people will be looking at it with different lenses. Importantly, the 2009 plans are the benchmark and what we have to work with. He asked folks to review and figure out what needs to be added, and then we can discuss them. He proposed that everyone take a look and provide comments by the next meeting so we can get the comments into the Comment Matrix. Holowatz added that the 45-review period is creeping up. It will be good to get them reviewed.

ACTION: Karchesky will work with Bendickson to get a clarification email out about the Transport Plans (when they need to be reviewed by, etc.)

Olson said he appreciated everyone’s comments, and if anyone wants to see other things on the March agenda, they can be sent to both he and Holowatz with a copy to Peggy Miller, WDFW.

FPS Next Steps

- Continue reviewing the 60% design
- Fish Transport Plan/Marking Strategies – Alternative

Next FPS Meeting: March 14, 2024

Action Items from February 8, 2024	Status
Chris Karchesky will work with Beth Bendickson to get a clarification email out about the Transport Plans (when they need to be reviewed by, etc.)	Ongoing

Action Items from January 11, 2024	Status
The Services and WDFW will work to develop a list of additional design information needs.	Complete
Group review of the December 2023 PowerPoint presentation.	
Beth Bendickson will send out a link to or a copy of the last version of the Fish Transport Plan.	Complete

Action Items from December 14, 2023	Status
Review and provide comments into the Comment Matrix and send to Chris Karchesky and Beth Bendickson by February 19, 2024.	Ongoing

Action Items from November 9, 2023	Status
Bryce Glaser will take a harder look through the Elements Document and pull out items to work on going forward.	Ongoing

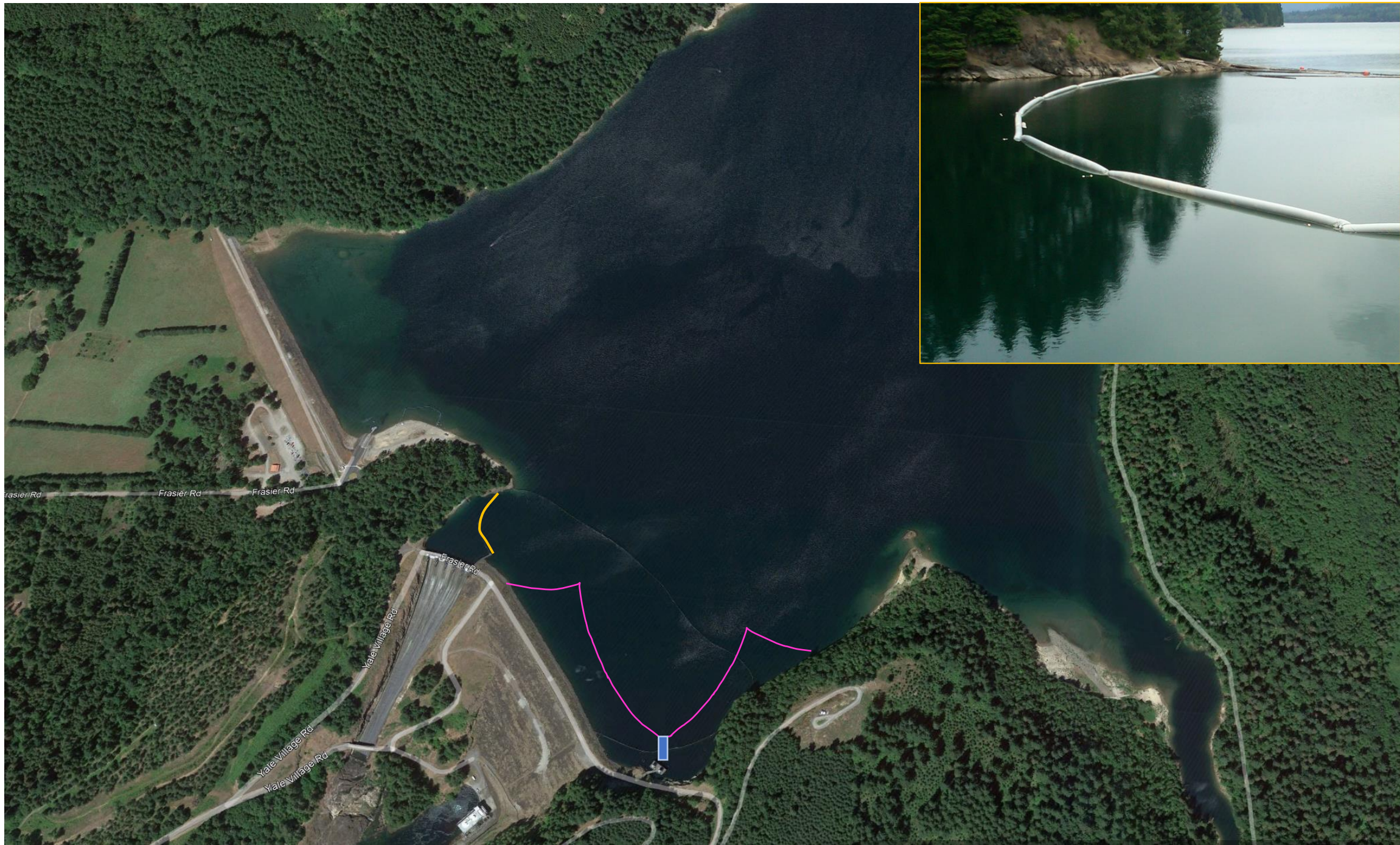
The meeting adjourned at 4:33 PM.

Meeting Handouts and Attachments

- Agenda
- **Attachment A** - Yale Hydroelectric Project: Spills Greater than 6,000 cfs

Attachment A

Yale Hydroelectric Project: Spills Greater than 6,000 cfs



Yale Hydroelectric Project: Spills Greater than 6,000 cfs

Year	Start	End	Duration (hour)	Average Spill (cfs)	Max Spill (cfs)
2011	01/16/2011 20:15	01/19/2011 05:30	57	6398	9010
2012	04/27/2012 14:15	05/11/2012 12:00	334	6137	9392
	05/23/2012 11:30	05/24/2012 10:15	23	6816	7073
	05/27/2012 17:45	05/28/2012 11:15	17	5663	6007
	11/20/2012 09:00	11/22/2012 16:45	56	6360	6962
	11/23/2012 08:30	11/25/2012 14:45	54	5955	7356
2013	None				
2014	03/06/2014 11:00	03/11/2014 15:15	124	7310	17613
2015	12/06/2015 11:00	12/18/2015 13:30	290	10812	21184
2016	None				
2017	03/15/2017 17:00	03/22/2017 09:15	160	6440	11066
	04/25/2017 08:00	04/27/2017 12:15	52	5767	6153
	10/22/2017 13:45	10/26/2017 07:30	90	7018	8099
2018	None				
2019	10/03/2019 08:45	10/15/2019 17:45	297	4144	27257
2020	01/27/2020 13:00	02/11/2020 17:00	364	8499	11537
2021	01/11/2021 12:00	01/16/2021 14:15	122	6547	10424
	11/11/2021 12:30	11/16/2021 18:00	125	11373	22216
2022	None				
2023	None				



- Since 2011, there has been 15 spill events with flows that exceed the limits of the barrier net (> 6,000 cfs) and it had to be lowered.
- Median duration: 122 hours (~5 days)