

**Lewis River Hydroelectric Projects Settlement Agreement  
Aquatic Coordination Committee (ACC)  
Meeting Agenda**

**Date & Time:** Thursday, June 13, 2019  
9:00 a.m. – 10:15 a.m.

**Place:** CONFERENCE CALL ONLY

**Contacts:** Erik Lesko: (503) 412-8401

Time	Discussion Item
9:00 a.m.	Welcome <ul style="list-style-type: none"><li>➤ Review Agenda and ACC 5/9/19 Meeting Notes</li><li>➤ Comment &amp; Accept Agenda and 5/9/19 Meeting Notes</li></ul>
9:10 a.m.	Public Comment Opportunity
9:15 a.m.	Lewis River In-Lieu Update; (Review schedule)
9:45 a.m.	Study/Work Product Updates <ul style="list-style-type: none"><li>○ ATS Update</li><li>○ Merwin Upstream Passage – Status</li><li>○ Swift Floating Surface Collector – Status</li><li>○ Bull Trout Subgroup Update</li></ul>
10:00 a.m.	<ul style="list-style-type: none"><li>➤ Next Meeting's Agenda</li><li>➤ Public Comment Opportunity</li></ul> <p>Note: all meeting notes and the meeting schedule can be located at: <a href="http://www.pacificorp.com/es/hydro/hl/lr.html#">http://www.pacificorp.com/es/hydro/hl/lr.html#</a></p>
10:15 a.m.	Adjourn

Join by Phone  
+1 (503) 813-5252 [Portland, Ore.]  
+1 (855) 499-5252 [Toll Free]

**Conference ID: 6325627**

**FINAL Meeting Notes**  
**Lewis River License Implementation**  
**Aquatic Coordination Committee (ACC) Meeting**  
**June 13, 2019**  
**Merwin Hydro Control Center**  
**Ariel, WA**

**ACC Representatives Present (13)**

Kim McCune, PacifiCorp  
Chris Karchesky, PacifiCorp  
Todd Olson, PacifiCorp  
Eli Asher, Cowlitz Indian Tribe  
Jonathan Stumpf, American Rivers  
Tom Wadsworth, WDFW  
Peggy Miller, WDFW  
Ruth Tracy, USFS  
Jim Byrne, Trout Unlimited  
Amanda Froberg, Cowlitz PUD  
Steve Manlow, LCFRB  
Tim Romanski, USFWS  
Joshua Ashline, NMFS

**Calendar:**

July 11, 2019	ACC Meeting	Merwin HCC
---------------	-------------	------------

Assignments from June 13, 2019	Status
Wadsworth: Schedule bull trout subgroup meeting end of July, 2019	<b>Pending – tentative 8/1/19</b>
Olson: Incorporate an ACC working session into the In-Lieu schedule to allow additional time for ACC input before bull trout 30% design is completed.	

Assignments from May 9, 2019	Status
Lesko: Add 2017 spring chinook distribution detection data and provide to the ACC.	<b>Complete – 7/11/19</b>
Olson: Provide schedule when Draft In-Lieu Program Strategic Plan, Draft Evaluation Plan for a 90-day review period, and Preliminary designs for Yale and Merwin Bull Trout fish passage facilities will be provided to the ACC for a 30-day review period.	<b>Complete – 6/13/19</b>

Assignments from March 14, 2019	Status
Josh Ashline – Contact NMFS sampling permit department for their response on NOR Tracking and report back to the ACC and perhaps discuss other tagging options.	<b>Complete – 7/11/19 Coverage under existing BiOp with gastric tags; more</b>

	<b>detailed discussion is needed with ACC</b>
--	---

<b>Parking Lot Items</b>	<b>Status</b>
Tracy: Stage 0 webinar PowerPoint presentation to ACC.	<b>Tentative – Fall 2019</b>
All: What are things to focus on; Salmon Port	

### Opening, Review of Agenda and Meeting Notes

Amanda Froberg (Cowlitz County PUD) called the meeting to order at 9:05am and reviewed the agenda. Froberg also reviewed the May 9, 2019 meeting notes. The meeting notes were approved with the following clarification change from Eli Asher on page 5 at 9:15am:

*Eli Asher (Cowlitz Indian Tribe) indicated disagreement with the In Lieu decision for Merwin Reservoir, and objected to delaying the decision on fish passage into Yale reservoir. Asher also stated that the current state of monitoring science would not be able to show a population level response to restoration actions within the proposed timeframe.*

### Public Comment

None

### Lewis River In-Lieu Update (Review Schedule)

Todd Olson (PacifiCorp) provided an In-Lieu review schedule per the ACC request (see insert below). Olson noted that at the ACC August 8, 2019 meeting the consultant R2 Resource will provide a bull trout passage presentation and Q&A. In addition, PacifiCorp is assembling the draft bull trout fish passage program plan which will also be available for review by August 8, 2019. Tom Wadsworth (WDFW) suggested that PacifiCorp present the Strategic and Evaluation plans to the ACC at the August 8<sup>th</sup> meeting. Todd Olson said this would be good and should be possible.

Aquatic Coordination Committee - Fish Passage Determination Review Schedule (Subject to change)

Document Title	Date to ACC	Date to SA Parties	Review Period	Comments Due	Due to FERC	Notes
Draft In-Lieu Program Strategic Plan	7/24/2019		30 days	8/24/2019		
Draft In-Lieu Program Evaluation Plan	7/24/2019		30 days	8/24/2019		
Bull Trout Fish Passage Concepts	8/8/2019					Presentation to ACC
Draft Application for FERC License Amendments (includes Strategic Plan, Evaluation Plan and Bull Trout Fish Passage Plan with Preliminary (30%) Designs)	9/12/2019	9/12/2019	90 days	12/12/2019		Draft Application will include ACC comment matrix on Draft In-Lieu Fund Program Strategic Plan and Evaluation Plans. These documents will be revised accordingly and included in Draft Application
Draft Biological Evaluation for FERC License Amendments	9/12/2019	9/12/2019	90 days	12/12/2019		
Application for FERC License Amendments					2/12/2020	

The goal for the September 12, 2019 ACC meeting is 30% design drawing and strategic plan. Jim Byrne (Trout Unlimited) expressed he wanted a working session prior to completion of the 30% design to discuss both the design and monitoring. Tim Romanski (USFWS) wants to know how the bull trout subgroup worked into the review and discussions to develop protocol of moving fish around. Tom Wadsworth (WDFW) will schedule a bull trout subgroup meeting the end of July to

provide recommendations to the ACC on the bull trout passage designs that PacifiCorp has developed.

Olson will incorporate an ACC working session into the schedule to allow time for additional ACC input before 30% design is completed.

Olson also communicated that the Alternative Dispute Resolution (ADR) process is underway as requested by Cowlitz Tribe and joining parties, and separately the Lower Columbia Fish Recovery Board. PacifiCorp legal counsel has reached out to the Cowlitz Tribe counsel for meeting dates and location of the two initial ADR meetings. Utilities counsel and Cowlitz Tribe counsel are discussing if all Settlement Agreement Parties are invited. The ACC expressed that they too would like to participate in the ADR meetings.

Ruth Tracy (USFS) asked if Settlement Agreement (SA) parties could attend the ADR meetings, Olson stated he would check with legal counsel. Olson believes it is the intent of the Utilities to invite all SA parties to the ADR meetings. Eli Asher (Cowlitz Indian Tribe) requested Olson provide the SA language that supported Olson's position, that SA parties should be allowed to participate in any ADR process.

## **Study/Work Product Updates**

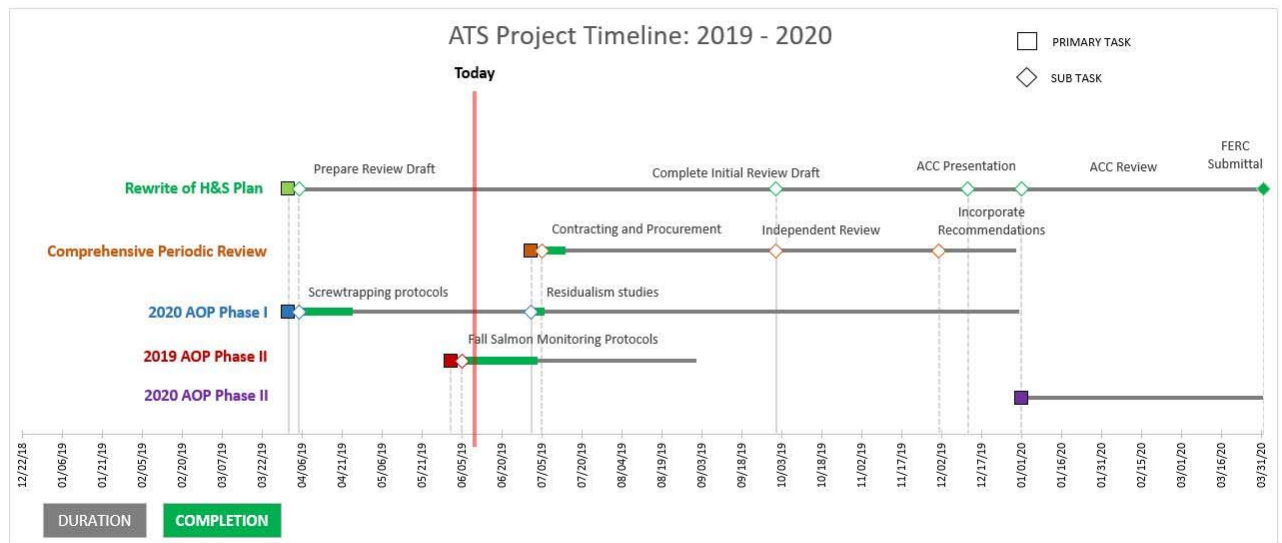
### **Flow Update**

Olson informed the ACC attendees that the Lewis River inflows to the projects 1,150 cubic feet per second (cfs) became less than the FERC Merwin minimum instream flow of 2,700 cfs. At that point in time, supplemental water was needed and PacifiCorp elected to first draft Yale reservoir.

Reservoirs are starting to draft so watch through June but if this continues PacifiCorp will have discussions with the Low Flow Committee. On July 1, 2019 instream flow will drop to 2,500 cfs.

### **Aquatic Technical Subgroup (ATS)**

The ATS continues to work on finalizing both the Phase II 2019 AOP and drafting the rewrite of the H&S Plan (see schedule below). Also, PacifiCorp has reached out to several firms to solicit interest on performing a Comprehensive Independent Review of the draft H&S Plan. The ATS will have a couple of names identified for the ACC to discuss and approve at our July meeting. Later this year, the Utilities will request an extension (from Dec 31, 2019 to April 1, 2020) for submittal of the H&S Plan to FERC. This extension was agreed to at our May ACC meeting to allow the ACC (60-day) review time after the Comprehensive Review is complete in early December.



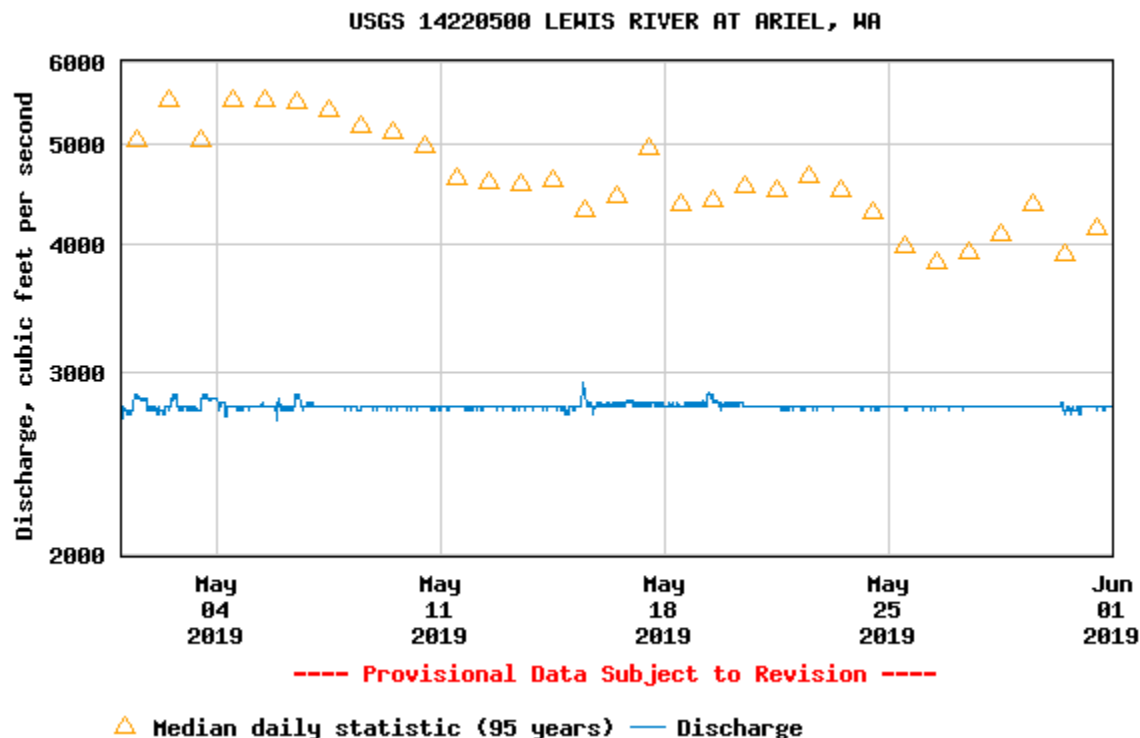
### Merwin Fish Collection Facility and General Operations ([Attachment A](#))

During the month of May, a total of 810 fish were captured at the Merwin Dam Adult Fish Collection Facility. The majority of these fish were adult spring Chinook with a few late arriving winter steelhead. Six hundred eight (608) adult spring Chinook and 121 jacks had been captured through the month of May. This number is down from last year (2018) when over 1,700 adult spring Chinook had been collected by the end of May.

The Merwin Trap was turned off unexpectedly on May 30, 2019 for a one day outage to replace damaged crowder cables. Other than this event, the trap ran continuously during the remainder of the month.

River flow below Merwin Dam was maintained near the minimum flow requirement of 2,700 cfs for the entire month.

## Discharge, cubic feet per second



### Upstream Transport ([Attachment A](#))

Eight (8) Blank Wire Tag (BWT) winter steelhead were captured by the end of December 2018 and were transported upstream as part of the 2019 run year. An additional 38 adults were taken upstream in January 2019 and another 30 in February, 106 in March, 705 in April, and 110 in May for a total of 997 BWT winter steelhead transported as part of the 2019 run year. Eleven (11) additional winter steelhead of natural origin (NOR) containing PIT tags from the upper basin were also transported upstream as part of the 2019 run year.

Run Year	Male	Female	Total adult winter steelhead taken upstream of Swift Dam
2012	141	48	189
2013	440	301	741
2014	452	581	1,033
2015	746	477	1,223
2016	378	376	754

<b>2017</b>	331	261	<b>592</b>
<b>2018</b>	682	535	<b>1,227</b>
<b>2019</b>	525	483	<b>1,008</b>

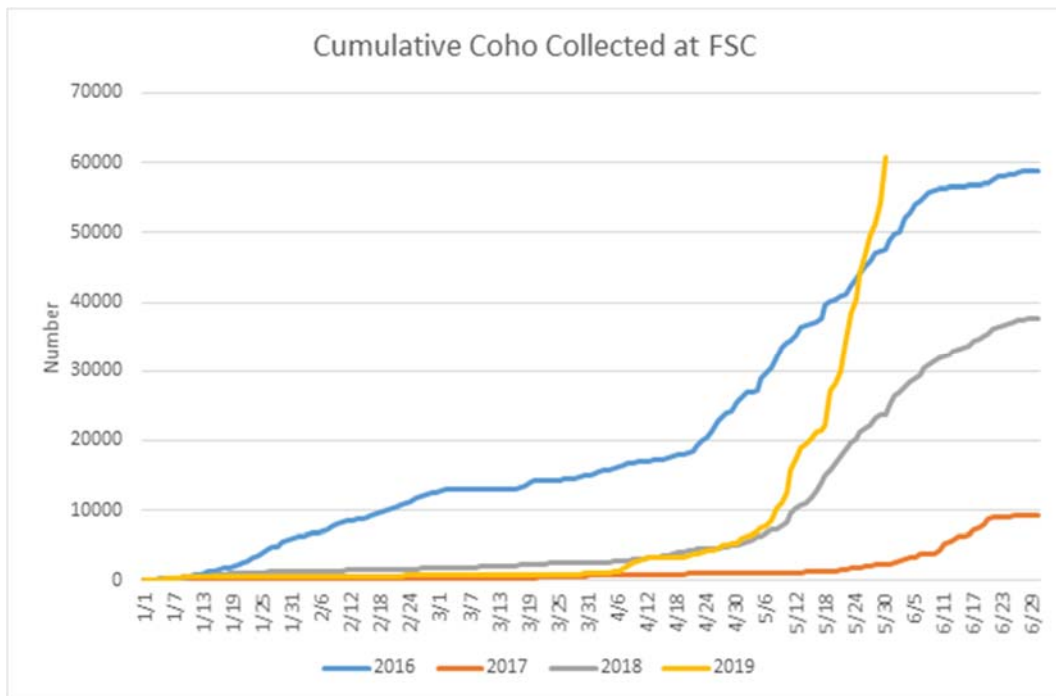
Eighteen (18) NOR (7 female/4 male/7 jack) and an additional 29 hatchery origin jack (HOR) spring Chinook have been taken upstream through May 2019.

#### **Swift Floating Surface Collector ([Attachment A](#))**

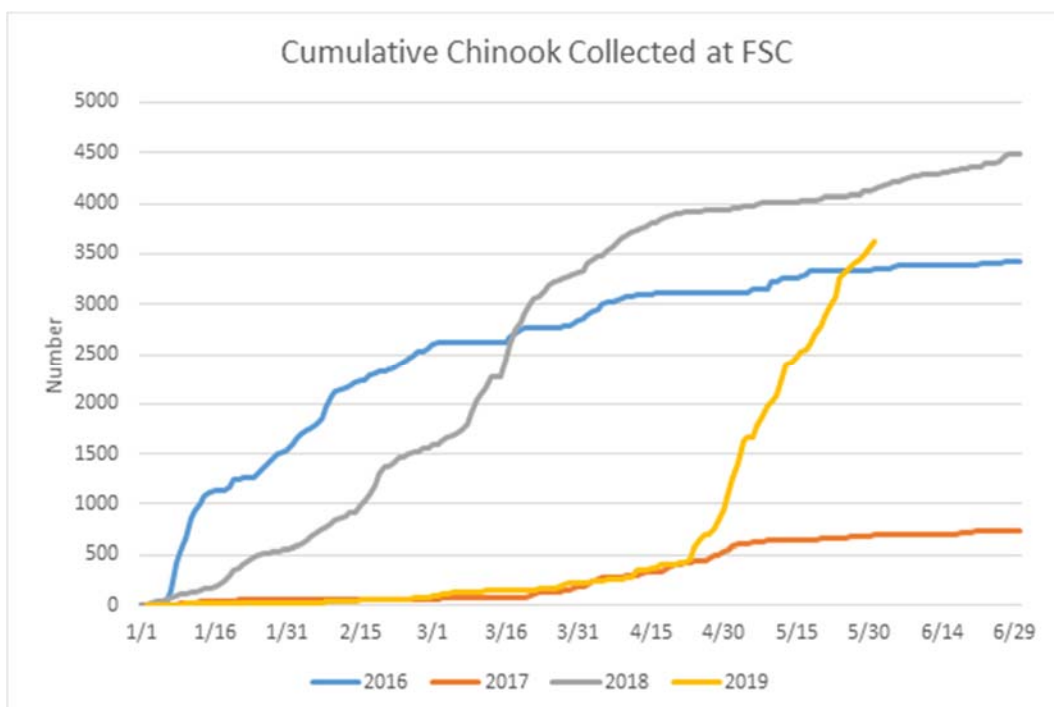
The Swift FSC remained in operation throughout the month of May. A total of 61,335 out-migrants were collected along with an additional 601 planted rainbow trout, 30 adult steelhead kelts, and two (2) bull trout. The total number of out-migrants collected at the Swift FSC during the month of May 2019 has eclipsed all other previous years of operation (i.e., since 2013). The highest number of out-migrants collected previously during the month of May was in 2018, when 26,135 out-migrants were collected overall. The total number of out-migrants collected in May 2019 accounts for approximately 87% of the total catch (70,045) at the Swift FSC since January 1, 2019.

<b>Run Year</b>	<b>May Collection Numbers by Run Year at Swift FSC</b>				
	<b>Coho</b>	<b>Chinook</b>	<b>Steelhead</b>	<b>Cutthroat</b>	<b>TOTAL</b>
<b>2013</b>	7,358	377	100	264	<b>8,099</b>
<b>2014</b>	2,435	216	311	515	<b>3,477</b>
<b>2015</b>	14,912	1,938	887	333	<b>18,070</b>
<b>2016</b>	23,799	233	1,392	551	<b>25,975</b>
<b>2017</b>	12,963	738	1,565	149	<b>7,607</b>
<b>2018</b>	18,965	190	6,651	329	<b>26,135</b>
<b>2019</b>	55,788	2,753	2,321	473	<b>61,335</b>

Collection of out-migrating juvenile coho from Swift Reservoir was higher in 2019 than any other previous year to date. While we saw an early bump in larger 2+ smolts in late-March and early-April, most fish out-migrating in May were 1+ smolts from the 2017 brood year. We expect to see coho smolts at the Swift FSC through June, although we anticipate daily collection numbers to decline as the reservoir water temperature warms through the month.

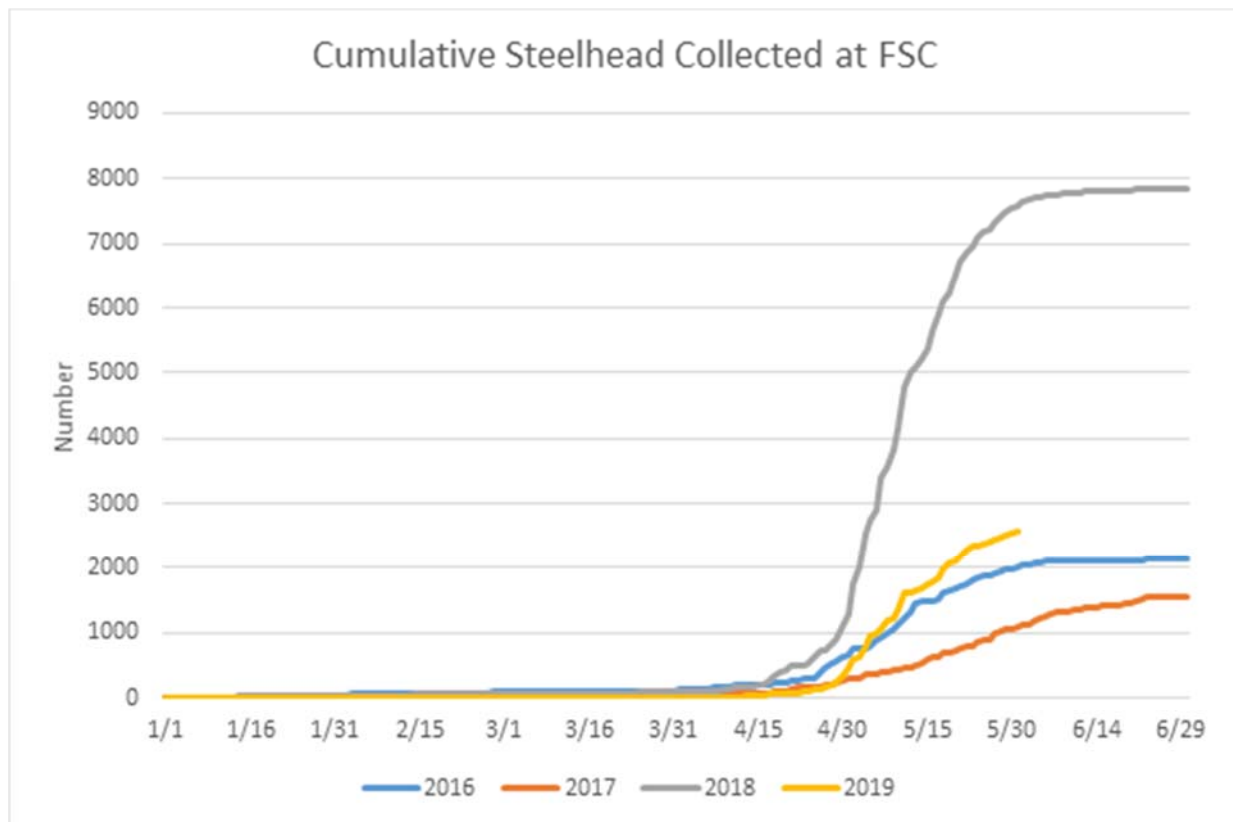


The number of spring Chinook collected at the Swift FSC remained lower than expected through April 2019. Historically, we have seen a higher number of juvenile spring Chinook coming out earlier in the year; however this year, numbers did not begin increasing until early-May. This is also the first year in which the run is mostly comprised of NOR fish from the 1,110 adults transported upstream in 2017. In all previous years', nearly all juvenile spring Chinook smolt collected at the Swift FSC were comprised of fish released in the upper basin as part of the acclimation program. This program was discontinued in 2018 when these releases were then transferred downstream in support of increasing adult returns.





Juvenile steelhead numbers collected at the Swift FSC were higher than in all previous years to date except for in 2018 when over 7,500 steelhead smolts had been captured and transported downstream by the end of May. Some possible reasons for this slightly lower number this year include: lower than average adults returns and lower spawner abundance in 2016 and 2017, or perhaps related to recent modifications to the entrance of the Swift FSC. The ongoing collection efficiency study at the Swift FSC will help assess these possibilities.



As a reminder, the entrance of the Swift FSC was modified in January 2019 with a new false floor within the Net Transition Structure (NTS). This was done to increase the entrance water velocity of the NTS and improve the hydraulic signature at the front of the vessel. A detailed presentation regarding this work was provided at the October 11, 2018 Aquatics Coordination Meeting. A copy of those meeting notes can be found online at:

[http://www.pacificorp.com/content/dam/pacificorp/doc/Energy\\_Sources/Hydro/Hydro\\_Licensin g/Lewis\\_River/li/acc/10112018\\_ACC\\_MN.pdf](http://www.pacificorp.com/content/dam/pacificorp/doc/Energy_Sources/Hydro/Hydro_Licensin g/Lewis_River/li/acc/10112018_ACC_MN.pdf)

The ongoing collection efficiency evaluation using a combination of acoustic and PIT tagged fish will help assess whether increasing the velocity at the entrance has improved collection of juvenile fish for all transport species. This study is ongoing and is expected to be completed in July 2019. A summary of preliminary result will be provided in next month's Fish Passage Report.

Karchesky (PacifiCorp) also mentioned that on June 1, 2019 approximately 2,000 juvenile out-migrants perished during downstream transport from Swift Reservoir. The investigation is still ongoing; although it appears that the mortality was caused by operator error in making the proper adjustment to the fish tank oxygen level.

### **Bull Trout Subgroup Update**

Tom Wadsworth (WDFW) informed the ACC attendees that the bull trout subgroup met June 12, 2019. The Subgroup is talking about improving monitoring methods, and a new eDNA study to be done by USGS folks this fall to further evaluate distribution in the upper basin. In addition, the bull trout tagging is underway at the Eagle Cliff area, which is completed every 3 years. The subgroup is also working to develop a comprehensive monitoring plan to address threats to bull trout as described in the USFWS Bull Trout recovery plan.

### **Agenda items for July 11, 2019**

- June 13, 2019 Meeting Notes
- Review Comprehensive Review Consultants, as provided by Lesko
- In Lieu Update
- Study/Work Product Update

*Adjourn 10:10am*

### **Next Scheduled Meeting:**

June 13, 2019
Merwin HCC
9:00 a.m. – 3:00 p.m.

### **Meeting Handouts & Attachments:**

- Meeting Notes from 5/9/19
- Agenda from 6/13/19
- **Attachment A** - Lewis River Fish Passage Report (May 2019)

# Lewis River Fish Passage Report

## May 2019

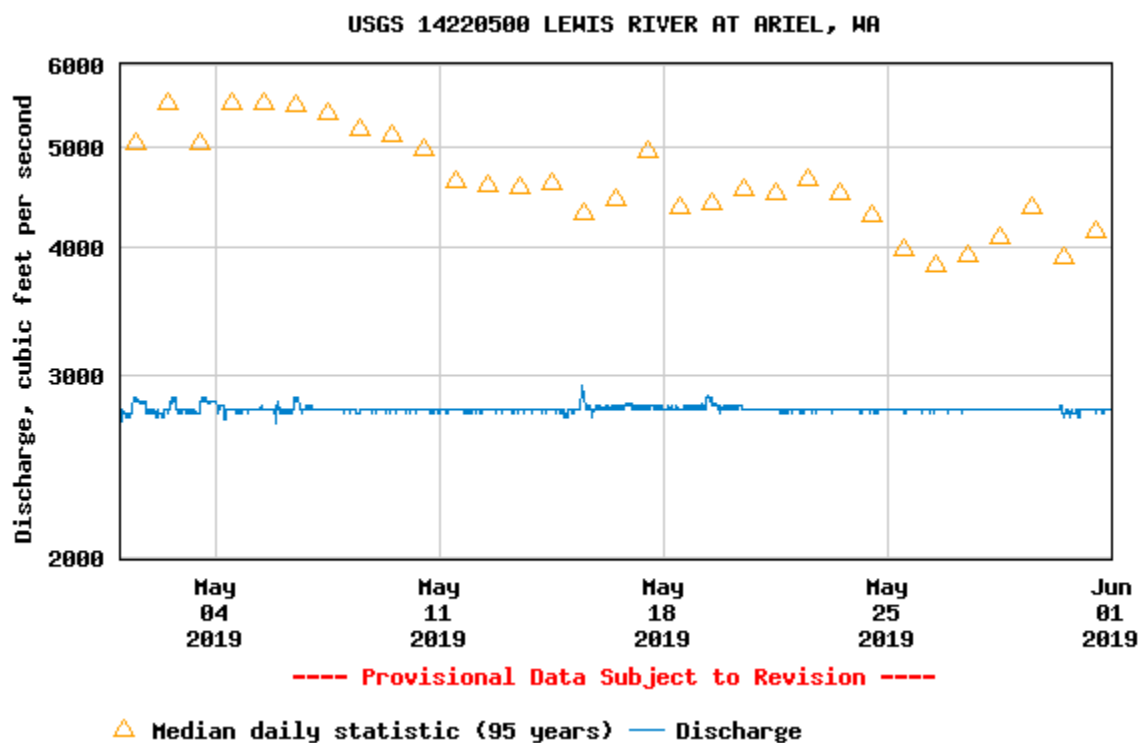
### Merwin Fish Collection Facility and General Operations

During the month of May, a total of 810 fish were captured at the Merwin Dam Adult Fish Collection Facility. The majority of these fish were adult spring Chinook with a few late arriving winter steelhead. Six hundred eight (608) adult spring Chinook and 121 jacks had been captured through the month of May. This number is down from last year (2018) when over 1,700 adult spring Chinook had been collected by the end of May.

The Merwin Trap was turned off unexpectedly on May 30, 2019 for a one day outage to replace damaged crowder cables. Other than this event, the trap ran continuously during the remainder of the month.

River flow below Merwin Dam was maintained near the minimum flow requirement of 2,700 cfs for the entire month.

### Discharge, cubic feet per second



### **Upstream Transport**

Eight (8) Blank Wire Tag (BWT) winter steelhead were captured by the end of December 2018 and were transported upstream as part of the 2019 run year. An additional 38 adults were taken upstream in January 2019 and another 30 in February, 106 in March, 705 in April, and 110 in May for a total of 997 BWT winter steelhead transported as part of the 2019 run year. Eleven (11) additional winter steelhead of natural origin (NOR) containing PIT tags from the upper basin were also transported upstream as part of the 2019 run year.

<b>Run Year</b>	<b>Male</b>	<b>Female</b>	<b>Total adult winter steelhead taken upstream of Swift Dam</b>
<b>2012</b>	141	48	<b>189</b>
<b>2013</b>	440	301	<b>741</b>
<b>2014</b>	452	581	<b>1,033</b>
<b>2015</b>	746	477	<b>1,223</b>
<b>2016</b>	378	376	<b>754</b>
<b>2017</b>	331	261	<b>592</b>
<b>2018</b>	682	535	<b>1,227</b>
<b>2019</b>	525	483	<b>1,008</b>

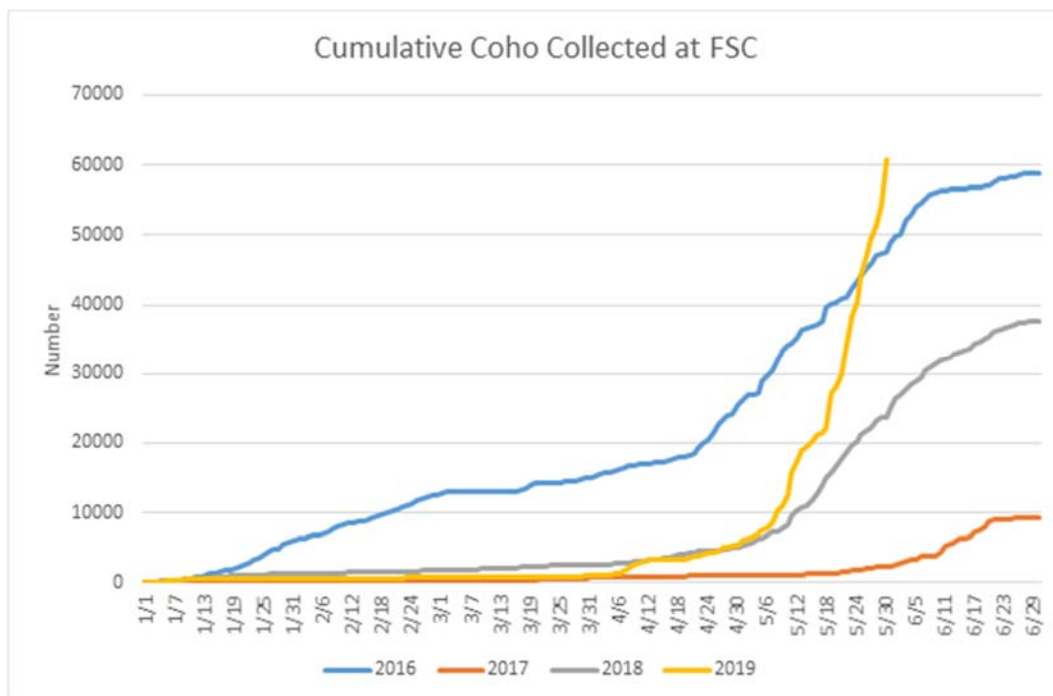
Eighteen (18) NOR (7 female/4 male/7 jack) and an additional 29 hatchery origin jack (HOR) spring Chinook have been taken upstream through May 2019.

### **Floating Surface Collector (FSC)**

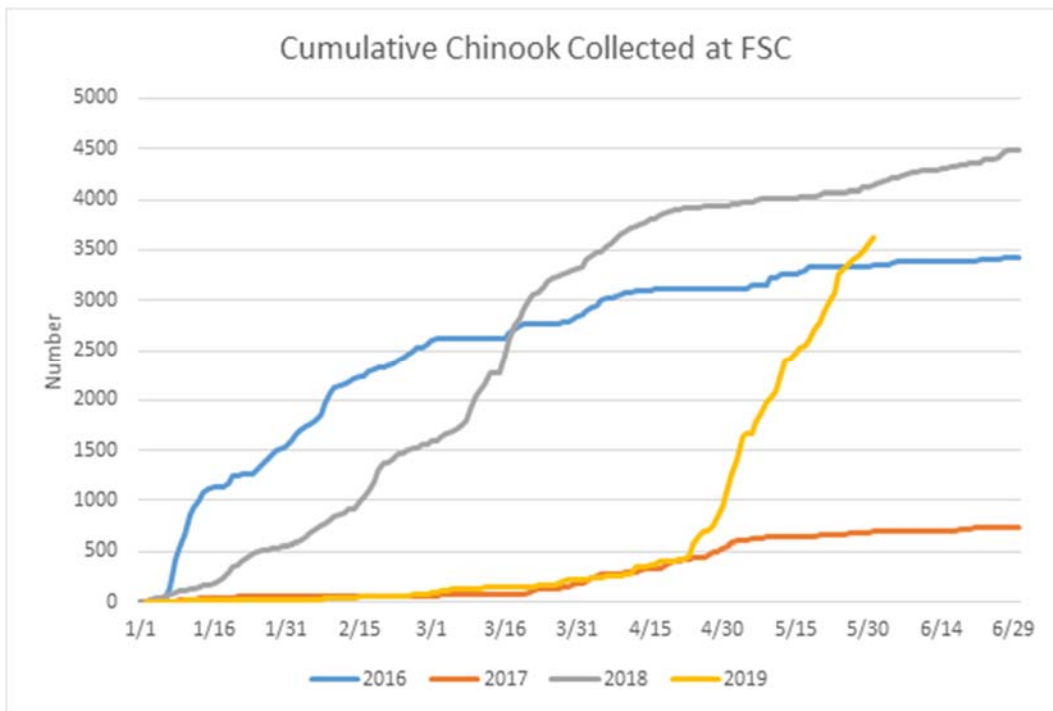
The Swift FSC remained in operation throughout the month of May. A total of 61,335 out-migrants were collected along with an additional 601 planted rainbow trout, 30 adult steelhead kelts, and two (2) bull trout. The total number of out-migrants collected at the Swift FSC during the month of May 2019 has eclipsed all other previous years of operation (i.e., since 2013). The highest number of out-migrants collected previously during the month of May was in 2016, when 25,975 out-migrants were collected overall. The total number of out-migrants collected in May 2019 accounts for approximately 87% of the total catch (70,045) at the Swift FSC since January 1, 2019.

Run Year	May Collection Numbers by Run Year at Swift FSC				
	Coho	Chinook	Steelhead	Cutthroat	TOTAL
<b>2013</b>	7,358	377	100	264	<b>8,099</b>
<b>2014</b>	2,435	216	311	515	<b>3,477</b>
<b>2015</b>	14,912	1,938	887	333	<b>18,070</b>
<b>2016</b>	23,799	233	1,392	551	<b>25,975</b>
<b>2017</b>	12,963	738	1,565	149	<b>7,607</b>
<b>2018</b>	18,965	190	6,651	329	<b>26,135</b>
<b>2019</b>	55,788	2,753	2,321	473	<b>61,335</b>

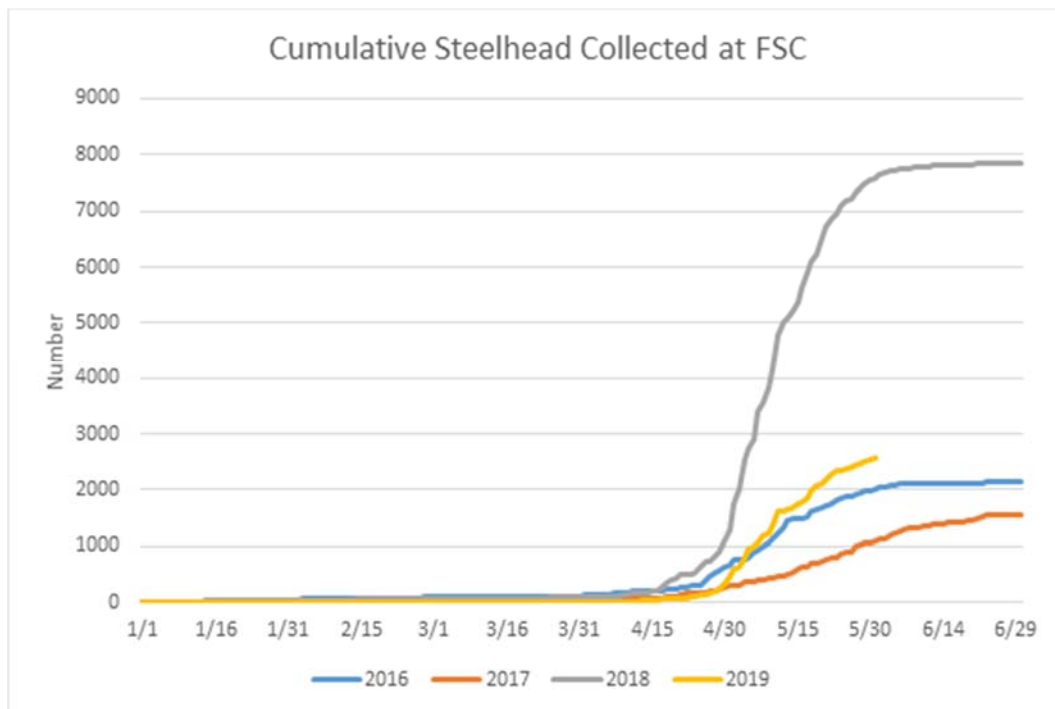
Collection of out-migrating juvenile coho from Swift Reservoir was higher in 2019 than any other previous year to date. While we saw an early bump in larger 2+ smolts in late-March and early-April, most fish out-migrating in May were 1+ smolts from the 2017 brood year. We expect to see coho smolts at the Swift FSC through June, although we anticipate daily collection numbers to decline as the reservoir water temperature warms through the month.



The number of spring Chinook collected at the Swift FSC remained lower than expected through April 2019. Historically, we have seen a higher number of juvenile spring Chinook coming out earlier in the year; however this year, numbers did not begin increasing until early-May. This is also the first year in which the run is mostly comprised of NOR fish from the 1,110 adults transported upstream in 2017. In all previous years', nearly all juvenile spring Chinook smolt collected at the Swift FSC were comprised of fish released in the upper basin as part of the acclimation program. This program was discontinued in 2018 when these releases were then transferred downstream in support of increasing adult returns.



Juvenile steelhead numbers collected at the Swift FSC were higher than in all previous years to date except for in 2018 when over 7,500 steelhead smolts had been captured and transported downstream by the end of May. Some possible reasons for this include: lower than average adults returns and lower spawner abundance in 2016 and 2017, or perhaps related to recent modifications to the entrance of the Swift FSC. The ongoing collection efficiency study at the Swift FSC will help assess these possibilities.



As a reminder, the entrance of the Swift FSC was modified in January 2019 with a new false floor within the Net Transition Structure (NTS). This was done to increase the entrance water velocity of the NTS and improve the hydraulic signature at the front of the vessel. A detailed presentation regarding this work was provided at the October 11, 2018 Aquatics Coordination Meeting. A copy of those meeting notes can be found online at:

[http://www.pacificorp.com/content/dam/pacificorp/doc/Energy\\_Sources/Hydro/Hydro\\_Licensing/Lewis\\_River/li/acc/10112018\\_ACC\\_MN.pdf](http://www.pacificorp.com/content/dam/pacificorp/doc/Energy_Sources/Hydro/Hydro_Licensing/Lewis_River/li/acc/10112018_ACC_MN.pdf)

The ongoing collection efficiency evaluation using a combination of acoustic and PIT tagged fish will help assess whether increasing the velocity at the entrance has improved collection of juvenile fish for all transport species. This study is ongoing and is expected to be completed in July 2019. A summary of preliminary result will be provided in next month's Fish Passage Report.

# Fish Facility Report

## Merwin Adult Trap

### May 2019

[illegible]

<sup>1</sup> Only hatchery verses wild distinctions are currently being made. All hatchery fish are labeled as "AD-Clip".



**Fish Facility Report**  
**Swift Floating Surface Collector**  
**May 2019**

Day	Coho			Chinook			Steelhead				Cutthroat			Bull Trout	Planted Rainbow	Total
	fry	parr	smolt	fry	parr	smolt	fry	parr	smolt	kelt	fry	< 13 in	> 13 in			
01	15	2	71	0	0	124	0	0	99	0	0	0	0	0	1	312
02	7	1	671	0	0	188	0	0	150	2	0	11	0	0	11	1041
03	6	3	426	0	1	123	0	1	110	1	0	8	0	0	8	687
04	6	20	204	0	17	146	0	0	30	0	0	0	1	0	0	424
05	10	1	381	0	17	198	0	13	164	0	0	0	0	0	2	786
06	14	12	516	0	0	41	0	0	166	2	0	0	0	0	1	752
07	21	2	153	0	0	0	0	1	23	0	0	0	0	0	0	200
08	13	6	904	3	0	101	0	2	79	1	0	9	0	0	5	1123
09	124	5	1707	0	12	89	0	0	113	6	0	0	0	0	4	2060
10	31	1	739	0	12	97	0	0	55	0	0	11	2	0	6	954
11	13	0	1475	0	0	25	0	0	129	0	0	0	0	0	21	1663
12	11	0	3211	0	0	80	0	0	236	2	0	1	0	0	0	3541
13	10	17	1441	0	2	179	0	0	25	0	0	11	0	0	0	1685
14	6	30	1759	0	0	121	0	1	20	2	0	2	0	0	2	1943
15	5	1	458	0	10	15	0	0	24	1	0	23	0	0	3	540
16	30	60	646	0	0	52	0	0	71	1	0	31	0	0	3	894
17	6	40	937	2	0	55	0	0	54	0	0	3	1	0	4	1102
18	5	13	344	0	0	23	0	1	44	0	0	4	0	0	0	434
19	5	3	627	0	1	43	0	1	132	0	0	4	0	0	0	816
20	0	0	4986	0	10	100	0	0	106	2	0	21	0	0	42	5267
21	1	59	1014	0	4	85	0	0	44	0	0	14	0	0	3	1224
22	62	66	1780	0	4	77	0	2	63	0	0	0	0	0	6	2060
23	5	0	4339	1	3	114	0	0	81	1	0	35	0	1	4	4584
24	0	43	4076	1	12	84	0	0	73	1	0	22	0	0	22	4334
25	13	35	1952	1	19	160	0	0	13	0	0	21	0	0	40	2254
26	3	17	3561	0	34	8	0	1	11	0	0	36	0	0	96	3767
27	3	63	2536	0	7	53	0	0	43	1	0	5	0	0	16	2727
28	1	0	2805	0	9	30	0	0	33	0	0	54	0	0	86	3018
29	5	68	1722	1	11	34	0	0	20	2	0	76	0	0	16	1955
30	1	10	3079	0	13	22	0	0	45	2	0	21	1	1	62	3257
31	0	116	6142	3	32	44	0	1	41	3	0	44	1	0	137	6564
Monthly	432	694	54662	12	230	2511	0	24	2297	30	0	467	6	2	601	61968
Total	2696	1247	59351	29	317	3244	1	45	2507	37	0	591	17	2	823	70907

