

**Lewis River Hydroelectric Projects Settlement Agreement  
Aquatic Coordination Committee (ACC)  
Meeting Agenda**

**Date & Time:** Thursday, July 11, 2019  
9:00 a.m. – 10:45 a.m.

**Place:** CONFERENCE CALL ONLY

**Contacts:** Erik Lesko: (503) 412-8401

Time	Discussion Item
9:00 a.m.	Welcome <ul style="list-style-type: none"> <li>➤ Review Agenda and ACC 6/13/19 Meeting Notes</li> <li>➤ Comment &amp; Accept Agenda and 6/13/19 Meeting Notes</li> </ul>
9:10 a.m.	Public Comment Opportunity
9:15 a.m.	Lewis River In-Lieu Update; (Review schedule)
9:30 a.m.	Review Comprehensive Review Consultants, as provided by the ATS
10:00 a.m.	Study/Work Product Updates <ul style="list-style-type: none"> <li>○ ATS Update – schedule and broodstock status</li> <li>○ Merwin Upstream Passage – Status</li> <li>○ Swift Floating Surface Collector – Status</li> <li>○ Bull Trout Subgroup Update</li> </ul>
10:30 a.m.	<ul style="list-style-type: none"> <li>➤ Next Meeting’s Agenda</li> <li>➤ Public Comment Opportunity</li> </ul> <p>Note: all meeting notes and the meeting schedule can be located at: <a href="http://www.pacificorp.com/es/hydro/hl/lr.html#">http://www.pacificorp.com/es/hydro/hl/lr.html#</a></p>
10:45 a.m.	<b>Adjourn</b>

Join by Phone

+1 (503) 813-5252 [Portland, Ore.]

+1 (855) 499-5252 [Toll Free]

**Conference ID: 6325627**

**FINAL Meeting Notes**  
**Lewis River License Implementation**  
**Aquatic Coordination Committee (ACC) Meeting**  
**July 11, 2019**  
**CONFERENCE CALL ONLY**

**ACC Representatives Present (13)**

Kim McCune, PacifiCorp  
 Chris Karchesky, PacifiCorp  
 Todd Olson, PacifiCorp  
 Eli Asher, Cowlitz Indian Tribe  
 Jonathan Stumpf, American Rivers  
 Tom Wadsworth, WDFW  
 Peggy Miller, WDFW  
 Aaron Roberts, WDFW  
 Sam Gibbons, WDFW  
 Ruth Tracy, USFS  
 Jim Byrne, Trout Unlimited  
 Amanda Froberg, Cowlitz PUD  
 Joshua Ashline, NMFS

**Guests (2)**

Jim Lynch, K&L Gates  
 Kelley Jorgensen, Plas Newydd Farm

**Calendar:**

August 8, 2019	ACC Meeting	Merwin HCC
----------------	-------------	------------

Assignments from July 11, 2019	Status
Lesko: Add 2018 spring Chinook distribution detection data and provide to the ACC, per Tom Wadsworth request.	<b>There is no data for SPCH in 2018.</b>

Assignments from June 13, 2019	Status
Wadsworth: Schedule bull trout subgroup meeting end of July, 2019	<b>Pending</b>
Olson: Incorporate an ACC working session into the In-Lieu schedule to allow additional time for ACC input before bull trout 30% design is completed.	<b>Complete – 7/11/19</b>

Assignments from May 9, 2019	Status
Lesko: Add 2017 spring chinook distribution detection data and provide to the ACC.	<b>Complete – 7/11/19</b>

Assignments from March 14, 2019	Status
Josh Ashline – Contact NMFS sampling permit department for their response on NOR Tracking and report back to the ACC and perhaps discuss other tagging options.	<b>Complete – 7/11/19</b> <b>Coverage under existing BiOp with gastric tags; more detailed discussion is needed with ACC</b>

Parking Lot Items	Status
Tracy: Stage 0 webinar PowerPoint presentation to ACC.	<b>Tentative – Fall 2019</b>
All: What are things to focus on; Salmon Port	

**Opening, Review of Agenda and Meeting Notes**

Erik Lesko (PacifiCorp) called the meeting to order at 9:03am and reviewed the agenda. No additions to the agenda were requested. Lesko also reviewed the June 13, 2019 meeting notes and assignment. In response to a comment from Eli Asher (Cowlitz Indian Tribe) the meeting notes were approved at 9:18am with the following clarifying changes on page 3:

Modify 2<sup>nd</sup> paragraph to read: *Olson also communicated that the Alternative Dispute Resolution (ADR) process is underway as requested by Cowlitz Tribe and joining parties, and separately the Lower Columbia Fish Recovery Board. PacifiCorp legal counsel has reached out to the Cowlitz Tribe counsel for meeting dates and location of the two initial ADR meetings. Utilities counsel and Cowlitz Tribe counsel are discussing if all Settlement Agreement Parties are invited. The ACC expressed that they too would like to participate in the ADR meetings.*

Add a 3<sup>rd</sup> paragraph to read: *Ruth Tracy (USFS) asked if Settlement Agreement (SA) parties could attend the ADR meetings, Olson stated he would check with legal counsel. Olson believes it is the intent of the Utilities to invite all SA parties to the ADR meetings. Eli Asher (Cowlitz Indian Tribe) requested Olson provide the SA language that supported Olson’s position, that SA parties should be allowed to participate in any ADR process.*

**Public Comment**

None

**Lewis River In-Lieu Update (Review Schedule)**

Todd Olson (PacifiCorp) provided an updated In-Lieu review schedule for ACC review. Olson noted that there are three items due to the ACC for a 30-day review by August 1, 2019:

- Draft In-Lieu Program Strategic Plan
- Draft In-Lieu Program Monitoring Plan
- Draft Bull Trout Fish Passage Concepts and Plan

In addition, the consultants Phil Roni, Mike Bonoff and R2 Resources will provide presentations and an opportunity for Q&A at the ACC August 8, 2019 meeting. In addition, PacifiCorp is assembling the draft bull trout fish passage program plan which should be available for review by the Bull Trout Working Group by July 22, 2019.

Aquatic Coordination Committee - Fish Passage Determination Review Schedule (Subject to change)

Document Title	Date to Parties	Comments Due	Date to ACC	Date to SA Parties	Review	Comments Due	Due to FERC	Notes	Completed
Draft In-Lieu Program Strategic Plan (ACC Review)			8/1/2019		30 days	9/3/2019		Presentation to ACC on August 8, 2019	
Draft In-Lieu Program Monitoring Plan (ACC Review)			8/1/2019		30 days	9/3/2019		Presentation to ACC on August 8, 2019	
Draft Bull Trout Fish Passage Concepts and Plan (Bull Trout Working Group Review)	7/22/2019	9/3/2019							
Draft Bull Trout Fish Passage Concepts and Plan (ACC Review)			8/1/2019			9/3/2019		Presentation to ACC on August 8, 2019	
Draft Application for FERC License Amendments (includes Strategic Plan, Monitoring Plan and Bull Trout Fish Passage Plan with Preliminary (30%) Designs)			9/12/2019	9/12/2019	90 days	12/12/2019		Draft Application will include ACC comment matrix on Draft In-Lieu Fund Program Strategic Plan and Monitoring Plan. These documents will be revised accordingly and included in Draft Application package.	
Draft Biological Evaluation for FERC License Amendments			9/12/2019	9/12/2019	90 days	12/12/2019			
Application for FERC License Amendments							2/12/2020		

Olson also noted that the list of disputing parties include the following:

- Cowlitz Indian Tribe and adjoining parties – Native Fish Society, Trout Unlimited and American Rivers
- Lower Columbia Fish Recovery Board, and
- WDFW which filed its ADR dispute July 8, 2019

In response to a question from Tom Wadsworth (WDFW) that he did not think a 30-day review will be very productive during ADR process, Olson noted that there are two tracks 1) the ADR process and 2) the FERC schedule that the Utilities have committed to.

Peggy Miller (WDFW) suggested postponing ACC review of the strategic and monitoring plan until the ADR process is complete because any review may give the perception that WDFW has agreed to the plans when the ADR process may change conditions of the preliminary determination. Ruth Tracy (USFS) also thinks the review schedule is unrealistic.

Olson communicated that it is the Utilities intent to provide a comment matrix and consultation record to the FERC with all filings. In addition, the 30-day review is the initial review. Another 90-day review will be available when the Utilities submit the Draft Application for FERC License Amendment to the settlement parties. Collectively, the Utilities are providing 120 day review of the documents. There will be plenty of time and attention available to the ACC for review of In-Lieu documents.

The comment matrix will help the FERC determine if additional information is needed or there are discrepancies in documents. All ACC comment letters/emails will be included in the consultation record to the FERC.

Tracy asked if there is a public review requirement for the biological evaluation (BE) after completion of the BE. Josh Ashline (NMFS) noted that it's up to FERC to open for public review.

Tracy would like the initial review to be 60 days rather than 30 days. Miller stated that WDFW wants to wait until the ADR process is complete before any review of documents.

Olson informed the ACC that the Utilities are seeking initial responses to the bull trout fish passage designs and other documents during the 30-day ACC review period.

In response to a July 9, 2019 email from Ruth Tracy suggesting that the Utilities propose to exclude settlement agreement (SA) parties from the dispute resolution process, Olson reviewed his response email of July 10, 2019 to Tracy and communicated that the Utilities intent is to notify all SA Parties of dates, times, etc. and to not exclude SA Parties and/or ACC representatives from the ADR meetings.

In response to a question from Eli Asher (Cowlitz Indian Tribe), Olson expressed that the role of a non-disputing party at an ADR meeting has yet to be determined. Legal counsel of disputing parties are engaged to identify the ADR process (including participation of non-disputing parties) and schedule.

Asher asked Tracy what the Forest Service role would be in an ADR meeting. Tracy said she is not prepared to respond to that question in this form at this time.

Jim Lynch (K&L Gates) said that the SA provides notice provisions to SA Parties and email to ACC representatives.

## **Study/Work Product Updates**

### **Aquatic Technical Subgroup (ATS)**

Lesko informed the ACC that 8.2.6 of the Lewis River Settlement Agreement calls for a Comprehensive Periodic Review of the draft Hatchery and Supplementation Program and provided the time line below. A draft scope of work was provided to the ACC by PacifiCorp via email on July 8, 2019 for their review and discussion.

Lesko reviewed the schedule and informed the ACC that a contractor to review the H&S Program should be on board by October 1, 2019. That contractor would have about 60 days to complete their review. The reviewer would present their results to the ACC during our December meeting.

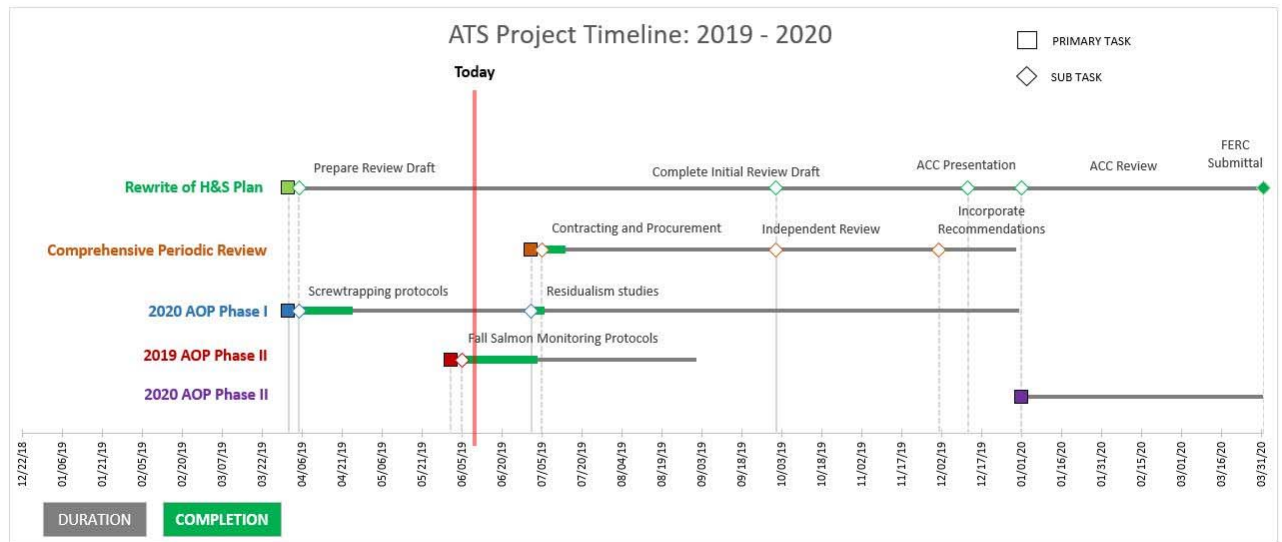
In developing the scope, Lesko indicated that it is important that we find a contractor that has knowledge and experience with HSRG recommendations, HGMP development and is knowledgeable in Pacific Northwest recovery planning and hatchery supplementation programs. With these qualifications, we have the best chance to be presented with practical recommendations that add value to the program and achieve the goals of the H&S program.

PacifiCorp noted that two firms have shown interest and are well qualified:

- DJ Warren
- HDR – Dave Ward

And possibly Chuck Peven of Peven Consulting (not contacted yet).

The ACC was invited to contact Erik Lesko directly with questions or if they have consultants that should be considered for this work. The scope of work will be available for comment at the August 8, 2019 ACC meeting. Later this year, the Utilities will request an extension (from Dec 31, 2019 to April 1, 2020) for submittal of the H&S Plan to FERC.



PacifiCorp would like to send out the SOW to potential consultants by August 12, 2019. If the ACC has additional contractors to add or would like comment on the SOW prior to the next meeting please send those comments to Erik Lesko

Regarding other ATS business, Lesko noted that a new 'ATS' tab has been added to the PacifiCorp website next to the ACC tab. Final meeting notes will be located under this tab as well as relevant plans and reports. The ATS tab can be found on the Lewis River website at the following link:

<http://www.pacificorp.com/es/hydro/hl/lr.html#>

- License Implementation
- ATS Tab

Chris Karchesky (PacifiCorp) updated the ACC on the recent Monitoring and Evaluation (M&E) agenda topics discussed during the June 27, 2019 ATS Meeting. Several agenda topics were discussed and included: 1) Transport of adult coho salmon above Swift Dam in fall 2019; 2) Catchable rainbow trout stocking into Swift Reservoir; and 3) Merwin Adult Trap Efficiency (ATE) Study – adult coho salmon in 2019? The draft meeting notes for this meeting have not been distributed yet, but will be by the end of July.

Karchesky mentioned that M&E Subgroup discussed the possibility of using surplus hatchery adults for nutrient enhancement upstream of Swift Dam in fall 2019. This is a possibility given the high numbers of adult coho forecasted to return to the Lewis River this year. Ruth Tracy (USFS), Tom Wadsworth (WDFW), and Karchesky (PacifiCorp) are in the process of putting together a draft proposal which they will share with the ACC later this summer. At this point, the general idea is to put excess coho carcasses into areas within the Gifford Pinchot National Forest that can be

accessed from a bridge. The timing, numbers of carcasses and specific locations in the upper basin are still under review.

Stocking of catchable rainbow into Swift Reservoir was also discussed at the June ATS meeting. Karchesky reminder members that the Utilities are required to stock 20,000 pounds of hatchery rainbow trout into Swift Reservoir annually for recreational fishing per the Lewis River Settlement Agreement. Stocking of these fish typically occurs in the spring just before Memorial Day (May) each year. The issue discussed was that a portion of these fish are subsequently collected at the Swift Reservoir FSC and eventually transported downstream along with juvenile salmon. Karchesky mentioned that this initial discussion was to identify the potential issues associated with stocking catchable rainbow trout into Swift Reservoir, and that further discussion regarding this topic is anticipated.

Lastly, Karchesky review M&E Subgroup's discussion and subsequent recommendation regarding the Adult Trap Efficiency Study at Merwin Dam for adult coho planned for fall 2019. It was the subgroup's recommendation that the study be postponed until next year when it is anticipated that more adults from the upper basin (or Natural Origin – NOR fish) will be returning. Although it is anticipated that a good number of hatchery adult coho will be returning to the Lewis River in fall 2019, it is not anticipated that many of these fish will be NOR. Past ATE studies using hatchery adult coho salmon have provided mixed results and were thought to be biased due to the fish's origin. Also, researchers feel that it is important to tag a number of fish that are initially captured in the lower river – or Trap Naïve – in order to account for trap bias. It is anticipated that numbers of adult NOR coho returning in 2020 will be higher than the numbers anticipated in 2019. Karchesky asked if the members of the ACC would accept the recommendation of the ATS. There was no objection.

**The ACC accepted the recommendation of the ATS that the Adult Trap Efficiency (ATE) Study scheduled in fall 2019 for adult coho salmon be postponed until fall of 2020.**

### **Broodstock**

Aaron Roberts (Hatchery Complex Manager, WDFW) provided an update regarding Lewis River run size for spring Chinook this year. Currently, returns to the traps are about 808. This is far below hatchery spring Chinook broodstock needs of about 1400.

Juvenile releases this year (from 2018 broodstock returns) are normal and include about 950,000 extra releases in June as part of ongoing rearing and release evaluations of the H&S program.

Coho returns to the Lewis River this fall are expected to be very strong with estimates for both early and late coho of about 70,000.

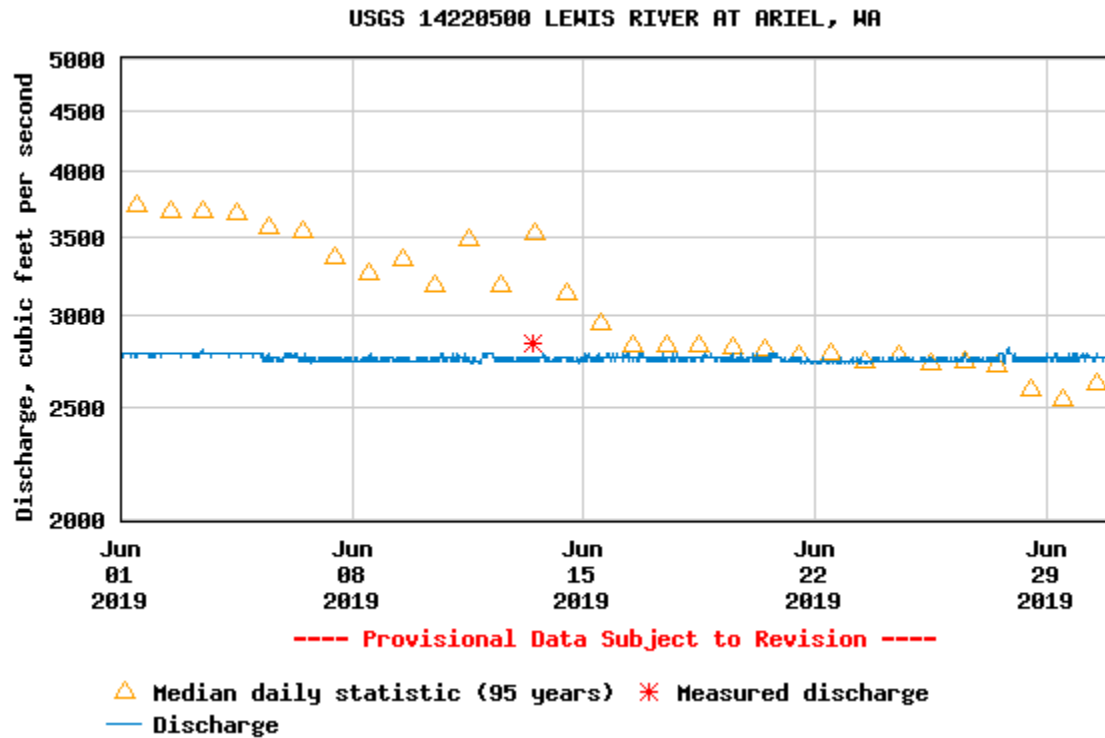
### **Merwin Fish Collection Facility and General Operations (Attachment A)**

During the month of June, a total of 392 fish were captured at the Merwin Dam Adult Fish Collection Facility. The majority of these fish were adult spring Chinook and summer steelhead. Seven hundred eleven (711) adult spring Chinook and 202 jacks had been captured through the month of June. This number is down from last year (2018) when nearly 2,000 adult spring Chinook had been collected by the end of June (n = 1,915).

The Merwin Dam Adult Fish Trap ran continuously during the month June.

River flow below Merwin Dam was maintained near the minimum flow requirement of 2,700 cfs for the entire month (Table 1).

**Table 1. Discharge in cubic feet per second recorded at the USGS Ariel, WA gauge (14220500) located immediately downstream of Merwin Dam.**



### Upstream Transport ([Attachment A](#))

Eight (8) Blank Wire Tag (BWT) winter steelhead were captured by the end of December 2018 and were transported upstream as part of the 2019 run year. An additional 38 adults were taken upstream in January 2019 and another 30 in February, 106 in March, 705 in April, 110 in May, and 4 in June for a total of 1,001 BWT winter steelhead transported as part of the 2019 run year. Twelve (12) additional winter steelhead of natural origin (NOR) containing PIT tags from the upper basin were also transported upstream as part of the 2019 run year. A combined total of 1,013 adult winter steelhead have been transported upstream of Swift Dam as part of the 2019 run year (Table 2).

**Table 2. Total number of adult winter steelhead transported upstream of Swift Dam in 2019.**

Run Year	Male	Female	Total adult winter steelhead taken upstream of Swift Dam
2012	141	48	189
2013	440	301	741



<b>2014</b>	452	581	<b>1,033</b>
<b>2015</b>	746	477	<b>1,223</b>
<b>2016</b>	378	376	<b>754</b>
<b>2017</b>	331	261	<b>592</b>
<b>2018</b>	682	535	<b>1,227</b>
<b>2019</b>	527	486	<b>1,013</b>

Twenty three (23) NOR (9 female/6 male/8 jack) and an additional 66 hatchery origin jack (HOR) spring Chinook have been taken upstream through June 2019.

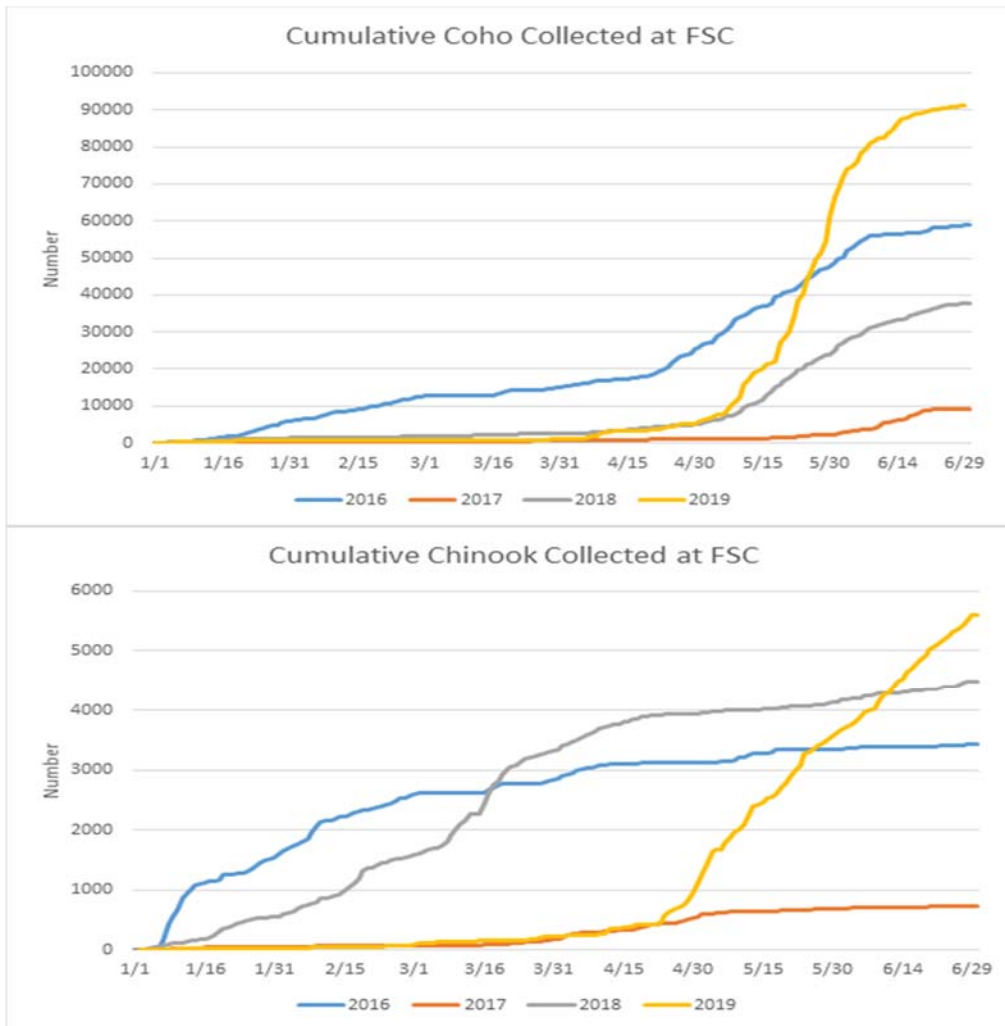
### **Swift Floating Surface Collector (Attachment A)**

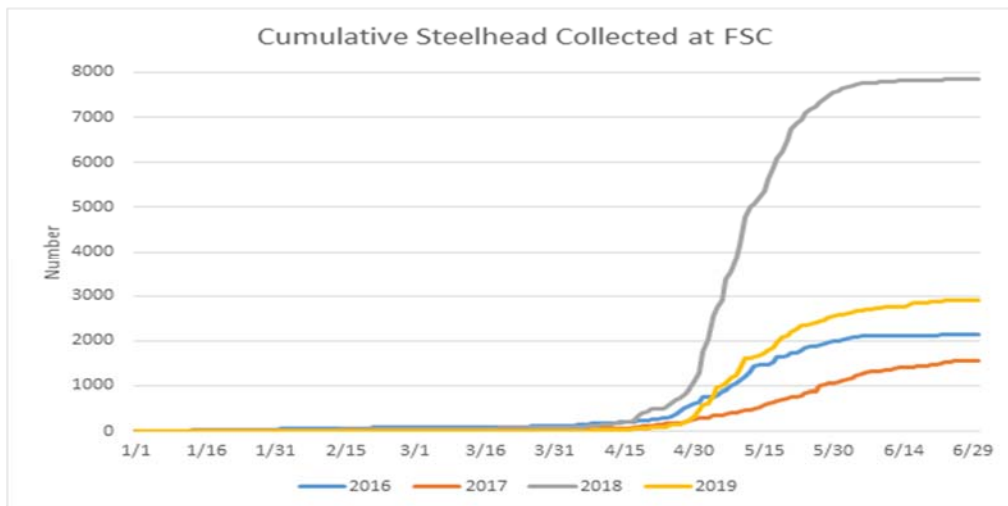
Record numbers of fish collected at the Swift FSC in 2019 continued into the month June with a total of 33,222 out-migrants along with an additional 3,579 planted rainbow trout, and 13 adult steelhead kelts collected for the month. Similar to May 2019, the total number of out-migrants collected at the Swift FSC during the month of June has also exceeded all other previous years of operation (i.e., since 2013). The highest number of out-migrants collected previously during the month of June was in 2018, when 14,699 out-migrants were collected and transported downstream (Table 3). To date, over 100,000 out-migrants have been collected at the Swift FSC and transported downstream by the end of June in 2019 (see Swift FSC Facility Report for June 2019 below).

**Table 3. Total number of out-migrating salmonids (by species) collected at the Swift FSC and transported downstream of Merwin Dam during the month of June since 2013.**

<b>Run Year</b>	<b>June Collection Numbers by Run Year at Swift FSC</b>				
	<b>Coho</b>	<b>Chinook</b>	<b>Steelhead</b>	<b>Cutthroat</b>	<b>TOTAL</b>
<b>2013</b>	5,415	297	52	172	<b>5,936</b>
<b>2014</b>	2,653	419	117	108	<b>3,297</b>
<b>2015</b>	7,192	300	152	68	<b>7,711</b>
<b>2016</b>	10,118	75	131	89	<b>10,411</b>
<b>2017</b>	6,947	44	467	149	<b>7,607</b>
<b>2018</b>	13,844	365	306	184	<b>14,699</b>
<b>2019</b>	30,603	2,064	341	214	<b>33,222</b>

Collection of out-migrating juvenile salmonids from Swift Reservoir remained high through early-June. As anticipated, daily collection numbers began decreasing towards the end of the month as reservoir water temperature began increasing. This was particularly evident for juvenile coho and steelhead, but less so for juvenile Chinook (Figure 1). Over 2,000 juvenile Chinook were collected this month, which exceeded all previous years for the month of June (Table 3). Nearly all of the juvenile Chinook (88%) collected in June 2019 were between 100 and 130 mm in length and were classified as parr (subyearlings). As a reminder, this is the first year in which out-migrating Chinook from Swift Reservoir are mostly comprised of NOR fish from the 1,110 adults transported upstream in 2017, and 700 in 2018. In all previous years', nearly all juvenile spring Chinook smolt collected at the Swift FSC were comprised of fish released in the upper basin as part of the acclimation program. This program was discontinued in 2018 when these releases were then transferred downstream in support of increasing adult returns.





**Figure 1. Cumulative number of out-migrating coho, Chinook and steelhead collected at the Swift FSC.**

As a reminder, the entrance of the Swift FSC was modified in January 2019 with a new false floor within the Net Transition Structure (NTS). This was done to increase the entrance water velocity of the NTS and improve the hydraulic signature at the front of the vessel. A detailed presentation regarding this work was provided at the October 11, 2018 Aquatics Coordination Meeting. A copy of those meeting notes can be found online at:

[http://www.pacificorp.com/content/dam/pacificorp/doc/Energy\\_Sources/Hydro/Hydro\\_Licensin\\_g/Lewis\\_River/li/acc/10112018\\_ACC\\_MN.pdf](http://www.pacificorp.com/content/dam/pacificorp/doc/Energy_Sources/Hydro/Hydro_Licensin_g/Lewis_River/li/acc/10112018_ACC_MN.pdf)

The ongoing collection efficiency evaluation using a combination of acoustic and PIT tagged fish will help assess whether increasing the velocity at the entrance has improved collection of juvenile fish for all transport species. This study is ongoing and the field portion of the effort is expected to be completed in July 2019.

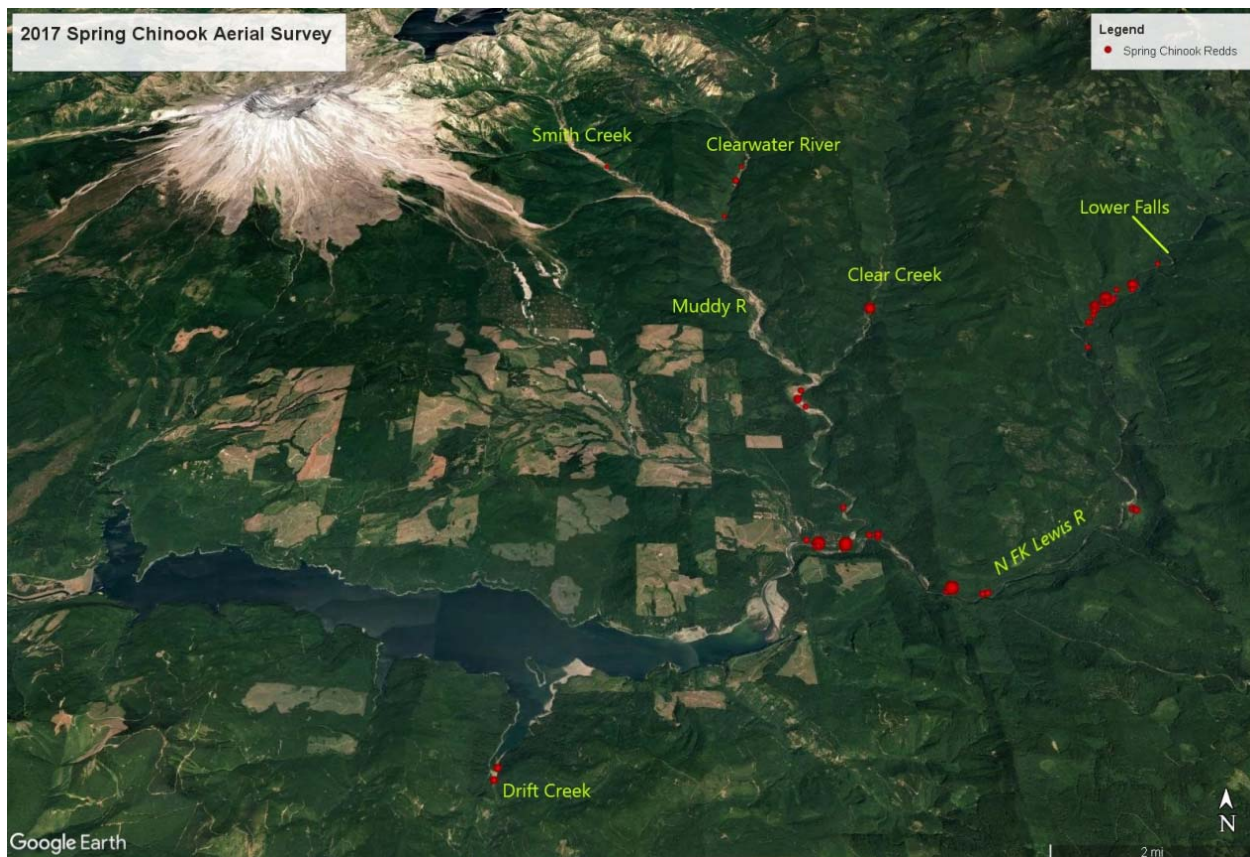
On June 1, 2019, approximately 2,000 juvenile out-migrants perished while in transport downstream from Swift Dam. The cause of mortality was due to low oxygen levels in the transport tanks while traveling from the Swift Floating Surface Collector (FSC) to the downstream release point below Merwin Dam. These mortalities will be reported on the Incidental Take Form for 2019 per Biological Opinion for ESA Section 7 Consultation (August 27, 2007).

### **Bull Trout Subgroup Update**

Tom Wadsworth (WDFW) informed the ACC attendees that the tentative bull trout subgroup meeting is August 1, 2019. The Subgroup is will continue its discussion about improving monitoring methods, distribution, monitoring and related methodology.

**Other** – See below for this assignment. Wadsworth requested the 2018 spring chinook distribution detection data added to the 2017 distribution map.

<b>Assignments from May 9, 2019</b>	<b>Status</b>
Lesko: Add 2017 spring chinook distribution detection data and provide to the ACC.	<b>Complete – 7/11/19</b>



**Agenda items for August 8, 2019**

- July 11, 2019 Meeting Notes
- SA 8.2.6 Scope of Work for Comprehensive Periodic Review; Update on Consultants
- In Lieu Update and presentations on the Draft Merwin In-Lieu Strategic Plan, Draft Monitoring Plan and Draft Bull Trout Fish Passage designs.
- Project Proposal; Nutrient Enhancement Update
- Study/Work Product Update

*Adjourn 10:35am*

**Next Scheduled Meeting:**

August 8, 2019
Merwin HCC
9:00 a.m. – 3:00 p.m.

**Meeting Handouts & Attachments:**

- Meeting Notes from 6/13/19
- Agenda from 7/11
- **Attachment A** – Lewis River Fish Passage Report (June 2019)

# Lewis River Fish Passage Report

## June 2019

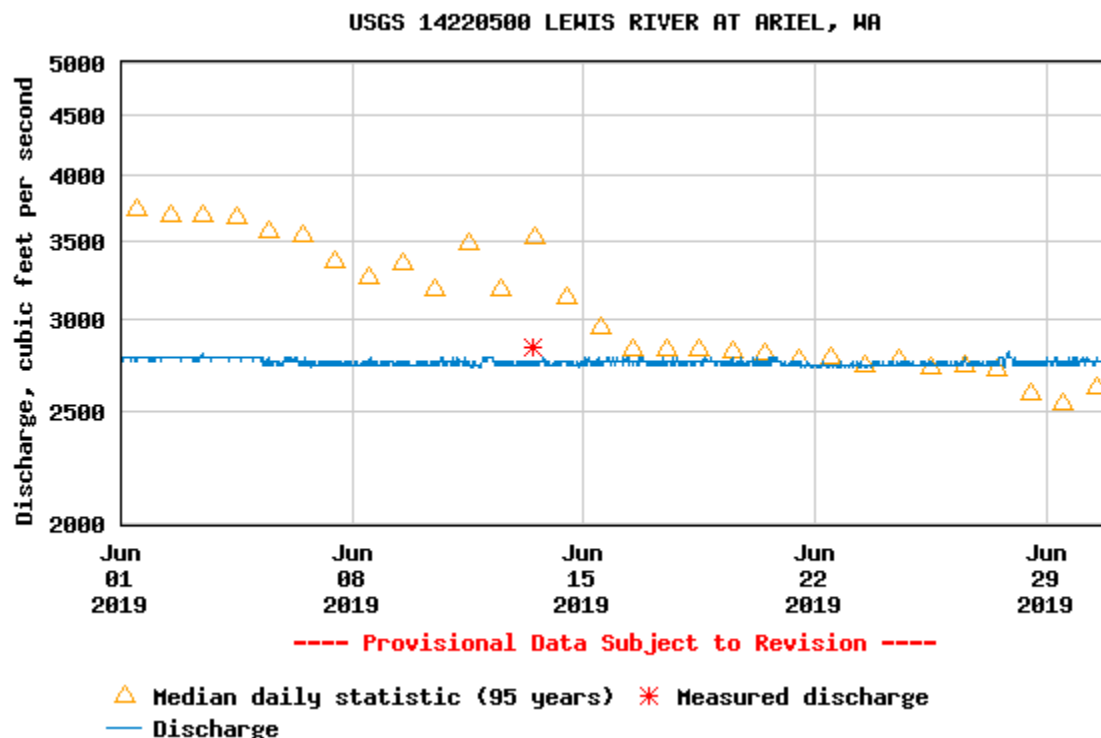
### Merwin Fish Collection Facility and General Operations

During the month of June, a total of 392 fish were captured at the Merwin Dam Adult Fish Collection Facility. The majority of these fish were adult spring Chinook and summer steelhead. Seven hundred eleven (711) adult spring Chinook and 202 jacks had been captured through the month of June. This number is down from last year (2018) when nearly 2,000 adult spring Chinook had been collected by the end of June (n = 1,915).

The Merwin Dam Adult Fish Trap ran continuously during the month June.

River flow below Merwin Dam was maintained near the minimum flow requirement of 2,700 cfs for the entire month (Table 1).

**Table 1. Discharge in cubic feet per second recorded at the USGS Ariel, WA gauge (14220500) located immediately downstream of Merwin Dam.**



## **Upstream Transport**

Eight (8) Blank Wire Tag (BWT) winter steelhead were captured by the end of December 2018 and were transported upstream as part of the 2019 run year. An additional 38 adults were taken upstream in January 2019 and another 30 in February, 106 in March, 705 in April, 110 in May, and 4 in June for a total of 1,001 BWT winter steelhead transported as part of the 2019 run year. Twelve (12) additional winter steelhead of natural origin (NOR) containing PIT tags from the upper basin were also transported upstream as part of the 2019 run year. A combined total of 1,013 adult winter steelhead have been transported upstream of Swift Dam as part of the 2019 run year (Table 2).

**Table 2. Total number of adult winter steelhead transported upstream of Swift Dam in 2019.**

<b>Run Year</b>	<b>Male</b>	<b>Female</b>	<b>Total adult winter steelhead taken upstream of Swift Dam</b>
<b>2012</b>	141	48	<b>189</b>
<b>2013</b>	440	301	<b>741</b>
<b>2014</b>	452	581	<b>1,033</b>
<b>2015</b>	746	477	<b>1,223</b>
<b>2016</b>	378	376	<b>754</b>
<b>2017</b>	331	261	<b>592</b>
<b>2018</b>	682	535	<b>1,227</b>
<b>2019</b>	527	486	<b>1,013</b>

Twenty three (23) NOR (9 female/6 male/8 jack) and an additional 66 hatchery origin jack (HOR) spring Chinook have been taken upstream through June 2019.

## **Floating Surface Collector (FSC)**

Record numbers of fish collected at the Swift FSC in 2019 continued into the month June with a total of 33,222 out-migrants along with an additional 3,579 planted rainbow trout, and 13 adult steelhead kelts collected for the month. Similar to May 2019, the total number of out-migrants collected at the Swift FSC during the month of June has also exceeded all other previous years of operation (i.e., since 2013). The highest number of out-migrants collected previously during the

month of June was in 2018, when 14,699 out-migrants were collected and transported downstream (Table 3). To date, over 100,000 out-migrants have been collected at the Swift FSC and transported downstream by the end of June in 2019 (see Swift FSC Facility Report for June 2019 below).

**Table 3. Total number of out-migrating salmonids (by species) collected at the Swift FSC and transported downstream of Merwin Dam during the month of June since 2013.**

<b>Run Year</b>	<b>June Collection Numbers by Run Year at Swift FSC</b>				
	<b>Coho</b>	<b>Chinook</b>	<b>Steelhead</b>	<b>Cutthroat</b>	<b>TOTAL</b>
<b>2013</b>	5,415	297	52	172	<b>5,936</b>
<b>2014</b>	2,653	419	117	108	<b>3,297</b>
<b>2015</b>	7,192	300	152	68	<b>7,711</b>
<b>2016</b>	10,118	75	131	89	<b>10,411</b>
<b>2017</b>	6,947	44	467	149	<b>7,607</b>
<b>2018</b>	13,844	365	306	184	<b>14,699</b>
<b>2019</b>	30,603	2,064	341	214	<b>33,222</b>

Collection of out-migrating juvenile salmonids from Swift Reservoir remained high through early-June. As anticipated, daily collection numbers began decreasing towards the end of the month as reservoir water temperature began increasing. This was particularly evident for juvenile coho and steelhead, but less so for juvenile Chinook (Figure 1). Over 2,000 juvenile Chinook were collected this month, which exceeded all previous years for the month of June (Table 3). Nearly all of the juvenile Chinook (88%) collected in June 2019 were between 100 and 130 mm in length and were classified as parr (subyearlings). As a reminder, this is the first year in which out-migrating Chinook from Swift Reservoir are mostly comprised of NOR fish from the 1,110 adults transported upstream in 2017, and 700 in 2018. In all previous years', nearly all juvenile spring Chinook smolt collected at the Swift FSC were comprised of fish released in the upper basin as part of the acclimation program. This program was discontinued in 2018 when these releases were then transferred downstream in support of increasing adult returns.



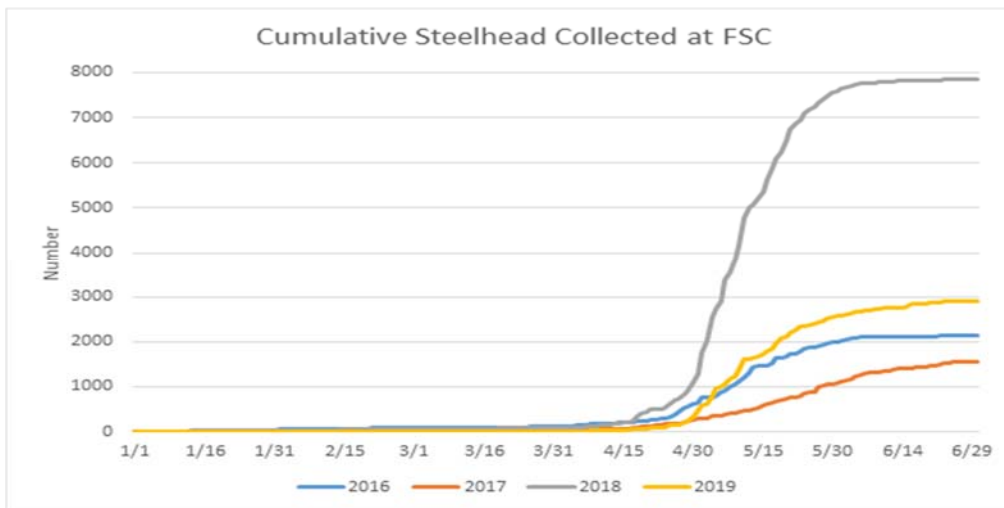
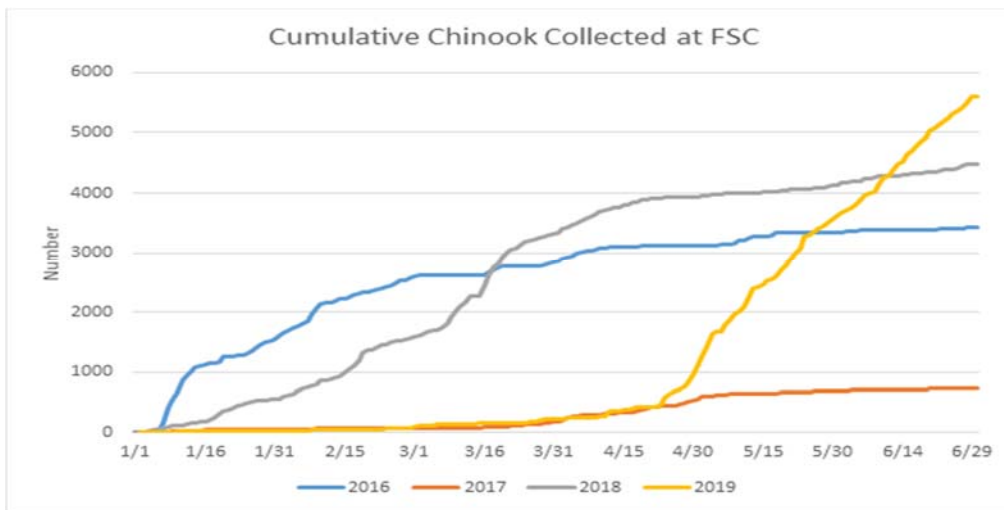
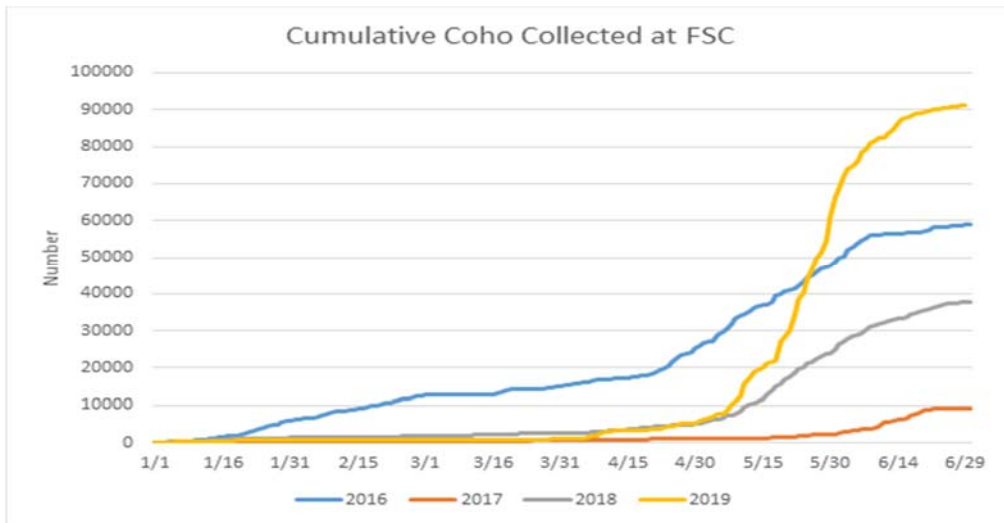


Figure 1. Cumulative number of out-migrating coho, Chinook and steelhead collected at the Swift FSC.



As a reminder, the entrance of the Swift FSC was modified in January 2019 with a new false floor within the Net Transition Structure (NTS). This was done to increase the entrance water velocity of the NTS and improve the hydraulic signature at the front of the vessel. A detailed presentation regarding this work was provided at the October 11, 2018 Aquatics Coordination Meeting. A copy of those meeting notes can be found online at:

[http://www.pacificorp.com/content/dam/pacificorp/doc/Energy\\_Sources/Hydro/Hydro\\_Licensing/Lewis\\_River/li/acc/10112018\\_ACC\\_MN.pdf](http://www.pacificorp.com/content/dam/pacificorp/doc/Energy_Sources/Hydro/Hydro_Licensing/Lewis_River/li/acc/10112018_ACC_MN.pdf)

The ongoing collection efficiency evaluation using a combination of acoustic and PIT tagged fish will help assess whether increasing the velocity at the entrance has improved collection of juvenile fish for all transport species. This study is ongoing and the field portion of the effort is expected to be completed in July 2019.

On June 1, 2019, approximately 2,000 juvenile out-migrants perished while in transport downstream from Swift Dam. The cause of mortality was due to low oxygen levels in the transport tanks while traveling from the Swift Floating Surface Collector (FSC) to the downstream release point below Merwin Dam. These mortalities will be reported on the Incidental Take Form for 2019 per Biological Opinion for ESA Section 7 Consultation (August 27, 2007).



**Fish Facility Report**  
**Swift Floating Surface Collector**  
**June 2019**

Day	Coho			Chinook			Steelhead				Cutthroat			Bull Trout	Planted Rainbow	Total
	fry	parr	smolt	fry	parr	smolt	fry	parr	smolt	kelt	fry	< 13 in	> 13 in			
01	5	150	5475	1	20	43			31						108	5833
02		304	1754		32	13		2				1			208	2314
03	1	38	3792	2	23	20			23	3		22	23		274	4221
04		8	1926	1	27	10		2	31			71			375	2451
05		12	712	2	48	1			21						231	1027
06		77	1306		73	12		1	11			14			319	1813
07	2	5	2061	6	59	10		1	32			14	1		494	2685
08		4	1159		42				4			1			201	1411
09	4	22	1461		30	1			11	1					249	1779
10		54	670	1	104							10			141	980
11		54	799		126	1			21			1	1		83	1086
12			82		27										40	149
13		23	889		63	20			10						48	1053
14	2	135	1106		102	6			14	1		7			314	1687
15		10	1688		52				2	1		1	1		156	1911
16	1	2	943		107	1			22						124	1200
17	2	6	564	2	62	10			41			1			32	720
18		4	379		44	10	1		10			10			49	507
19		20	471		73	32				1		1			7	605
20		61	140		63	4		1	10						14	293
21		4	373		100				10						32	519
22	1	3	262	5	48				1	12		10			45	387
23		11	259		71	1			11			2			22	377
24		6	203		39				1	1					1	251
25	2	3	275	3	59		1					11			1	355
26	20	11	125		59			1								216
27		4	78		55	5			1	1						144
28	20	37	189	5	61					3		11			10	336
29		27	188		62				1							278
30		16	103		94	11				1					1	226

<b>Monthly</b>	60	1111	29432	28	1825	211	2	9	330	13	0	188	26	0	3579	36814
<b>Total</b>	2756	2358	88783	57	2142	3455	3	54	2837	50	0	779	43	2	4402	107721

