

We are addressing questions concerning:

Resident rainbow vs. steelhead,

late-winter steelhead @Merwin

vs. winter-run hatchery steelhead,
and

vs. other Lewis River steelhead
stocks.

Gary.winans@noaa.gov

14 Aug 2008

Above

Quartz

Cussed Hollow

Muddy

Eagle Cliff Trap

Siouxon

Below

@ Merwin Dam 05,06, and **07**

Hatchery winters

Hatchery summers

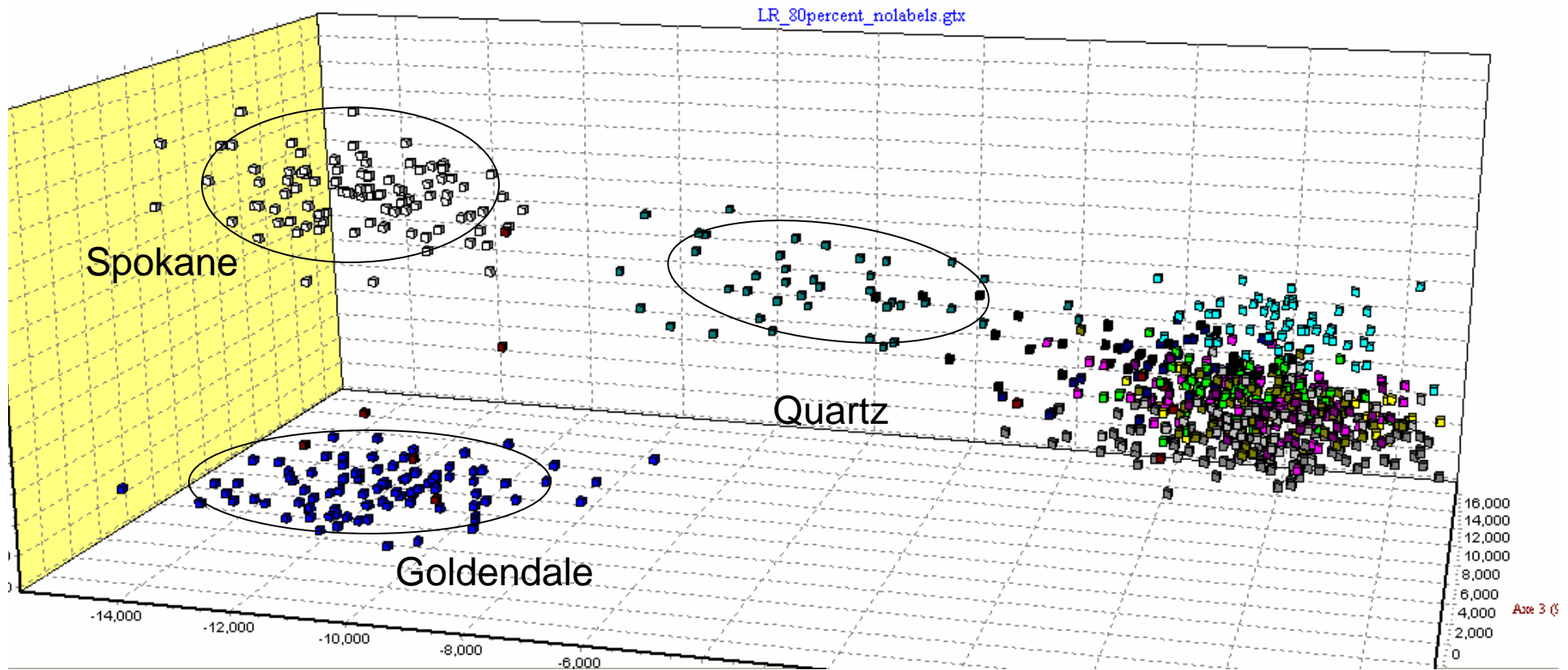
Cedar 96 & 03

EF Lewis

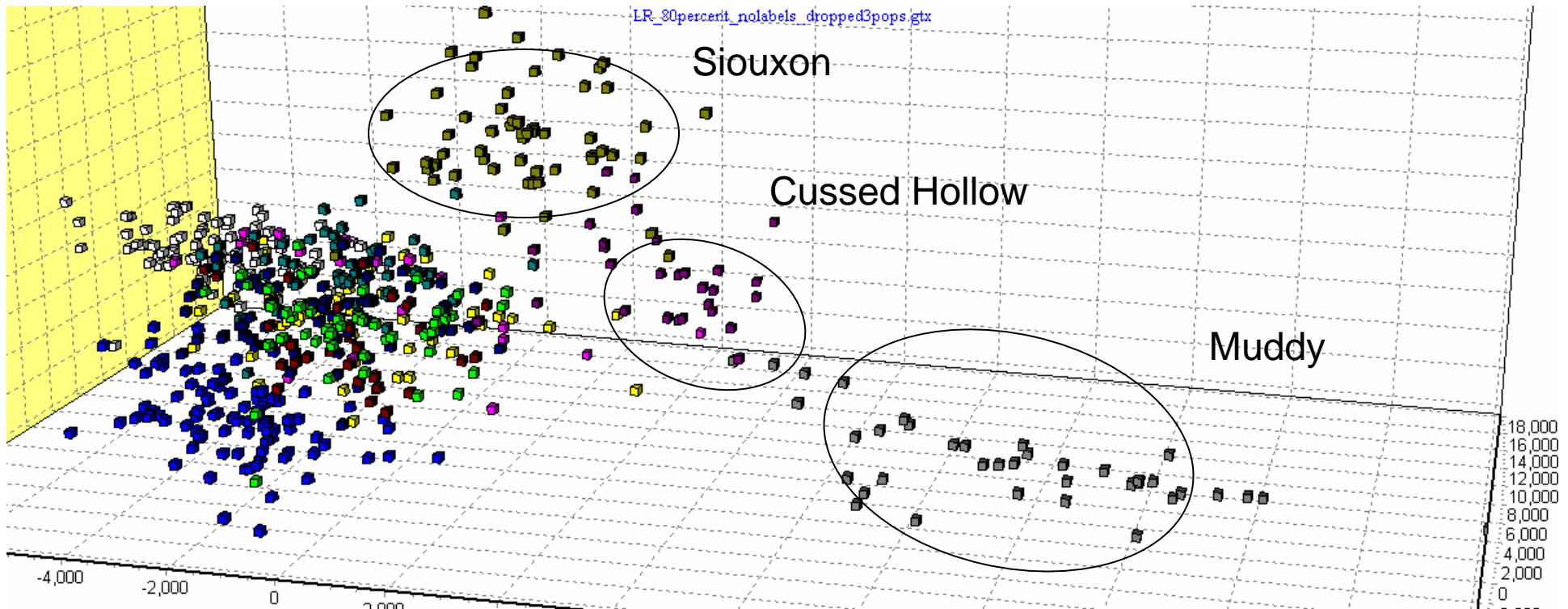
NF Lewis (mix)

Goldendale & Spokane

Rainbow trout (residents and introduced hatchery stocks) are genetically different from steelhead.

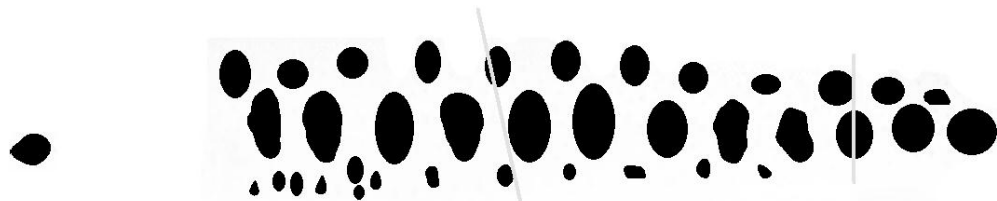
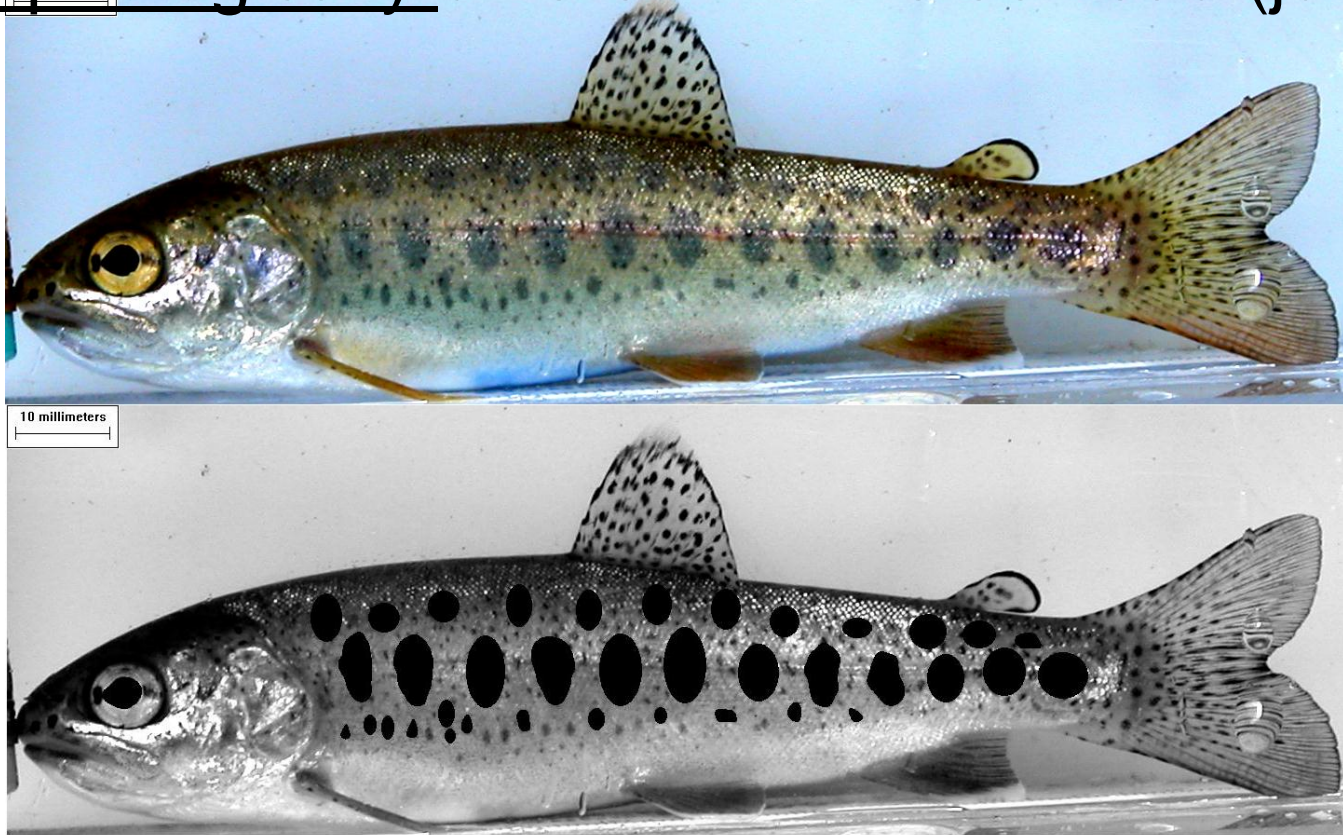


Rainbow trout (residents and introduced hatchery stocks) are genetically different from steelhead: part 2.

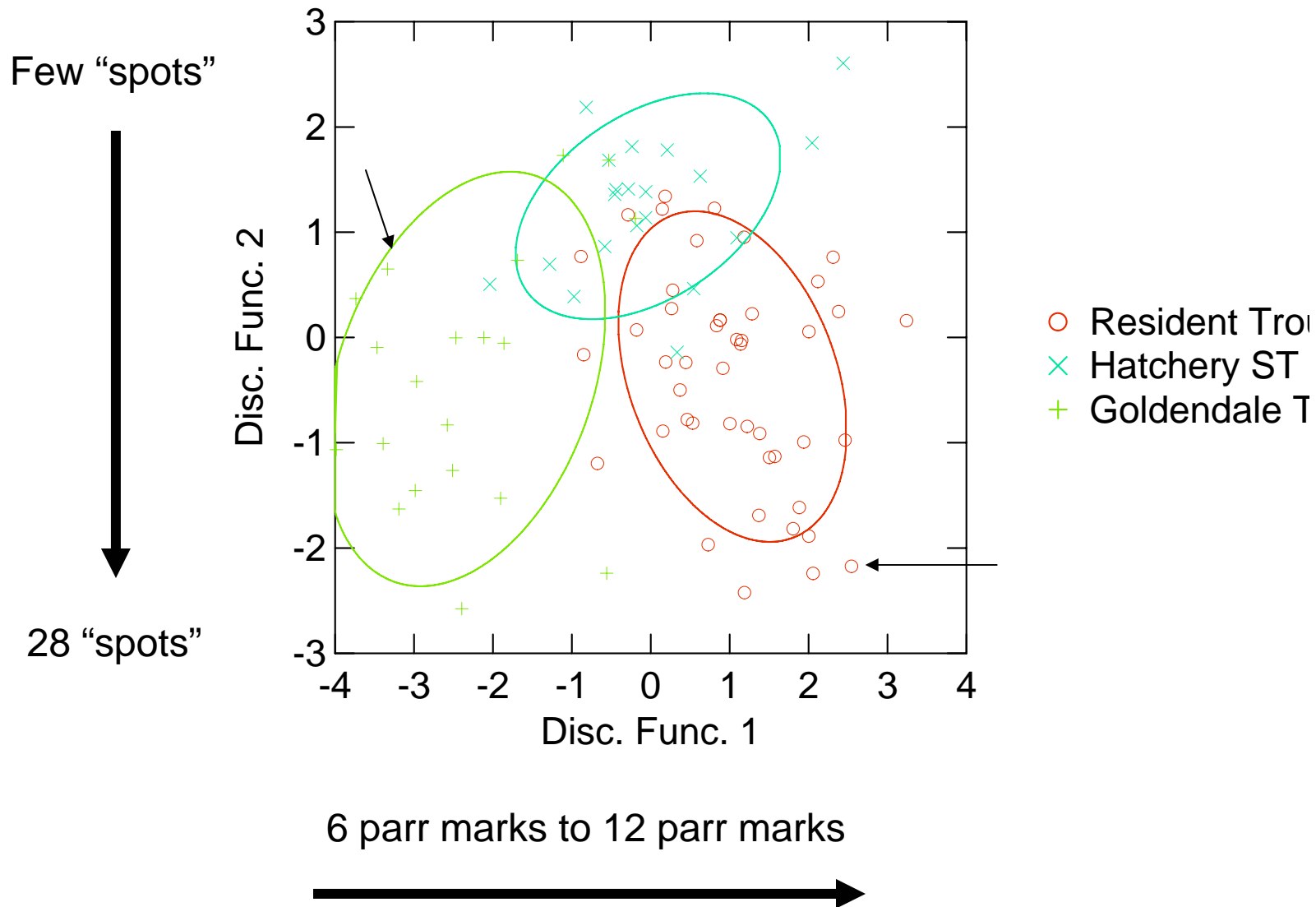


After dropping Quartz, Goldendale, and Spokane collections.

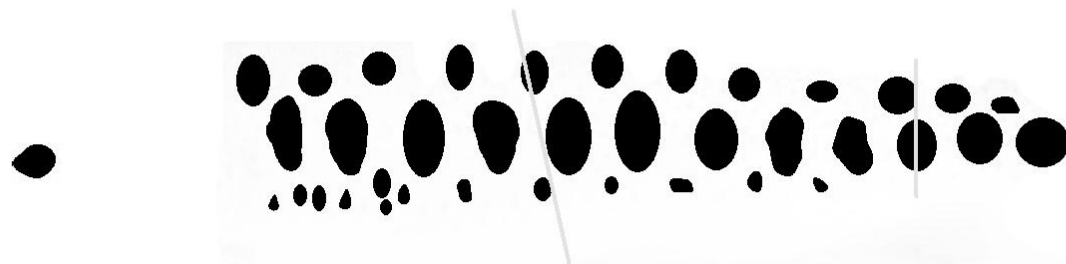
Resident and introduced hatchery stocks of rainbows are morphologically different from steelhead (juveniles).



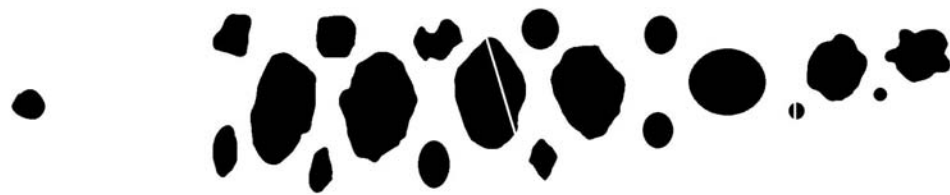
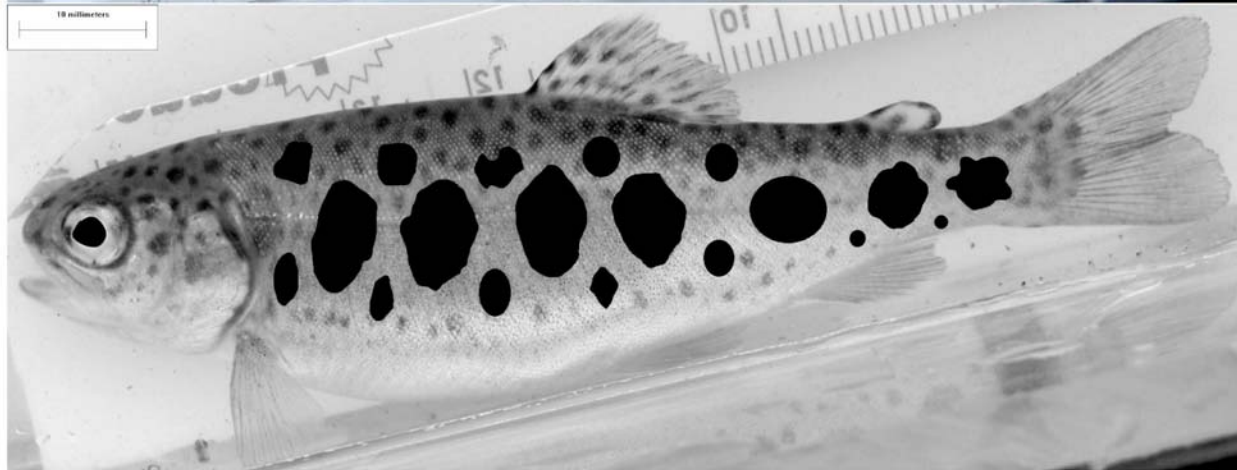
Preliminary parr mark analyses show that resident trout have a more complex coloration pattern.



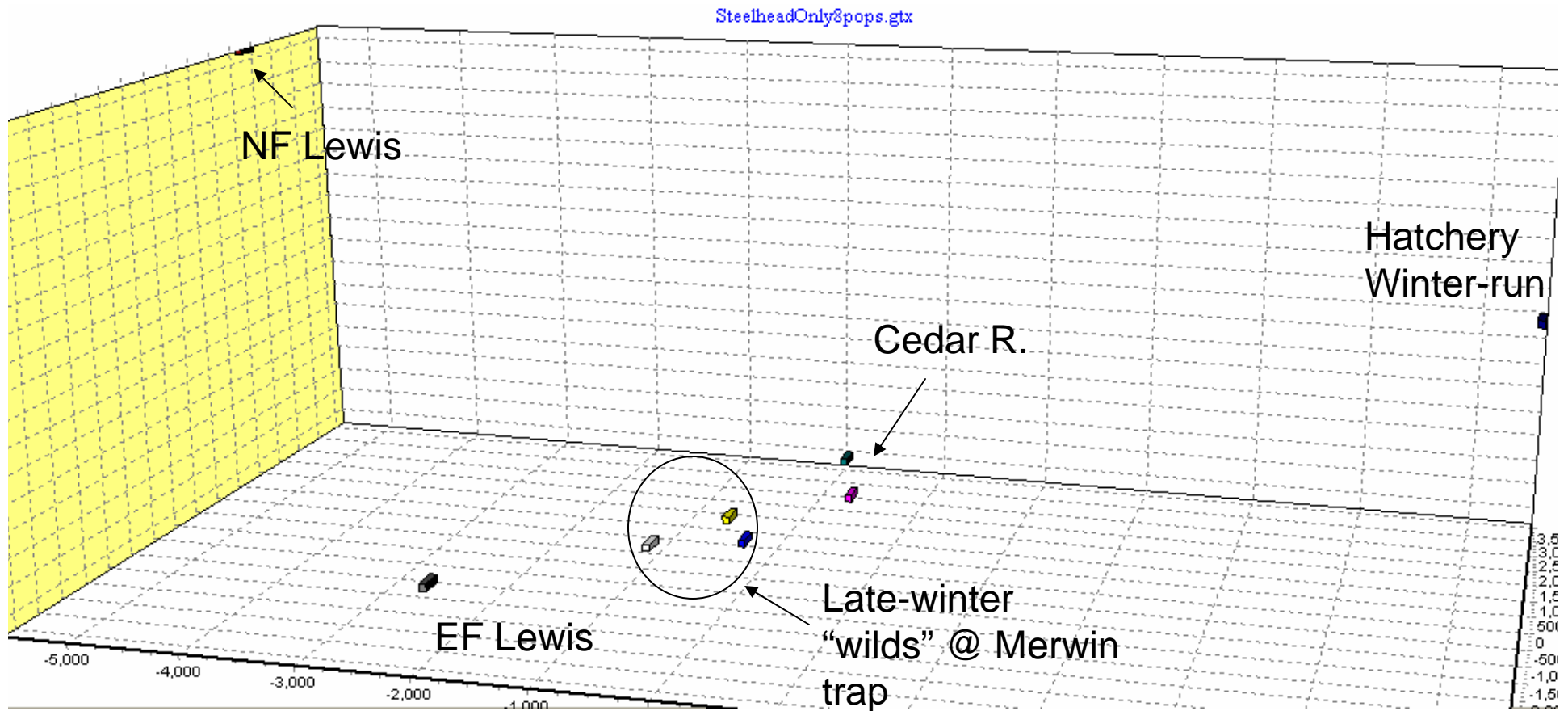
This is an above-dam resident juvenile trout.

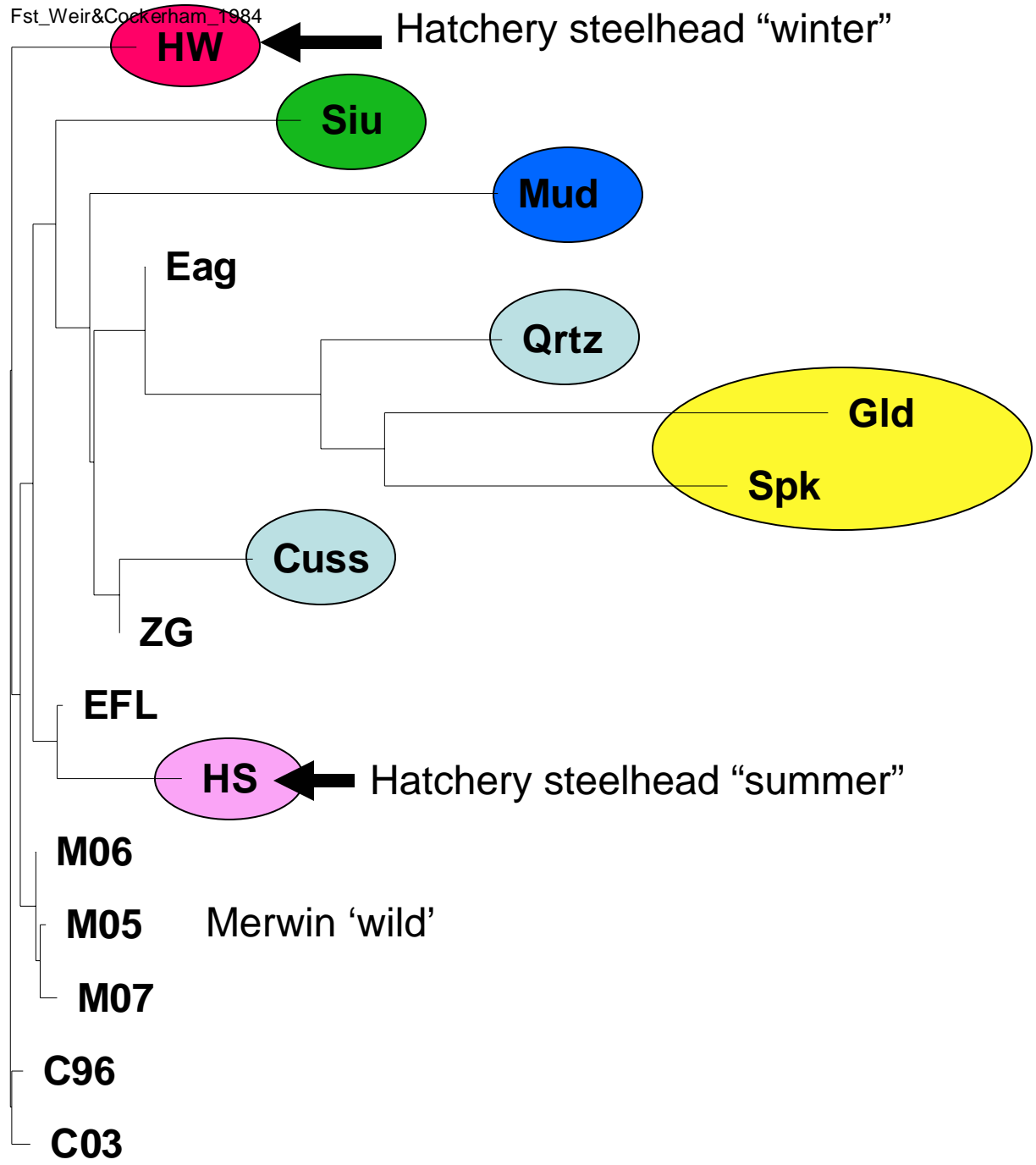


This is a juvenile Goldendale trout.

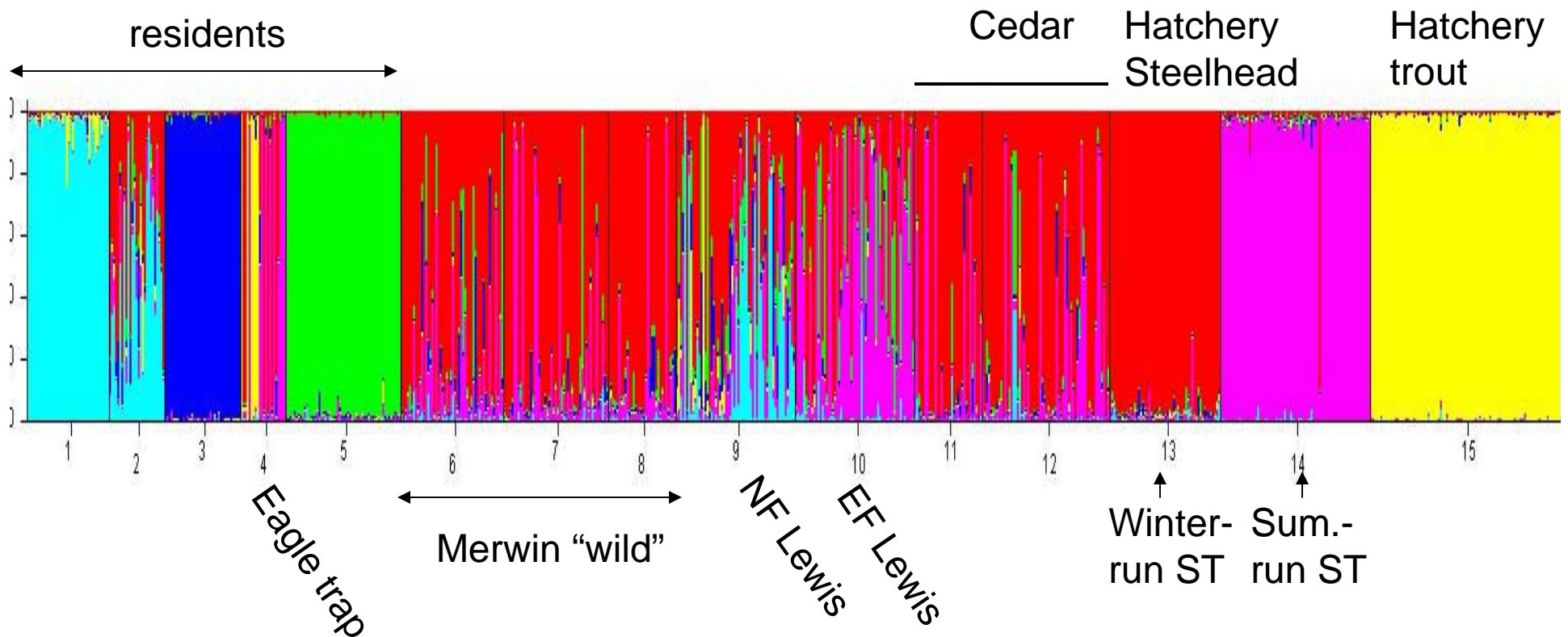


Collections of steelhead are genetically different from the hatchery winter-run steelhead.



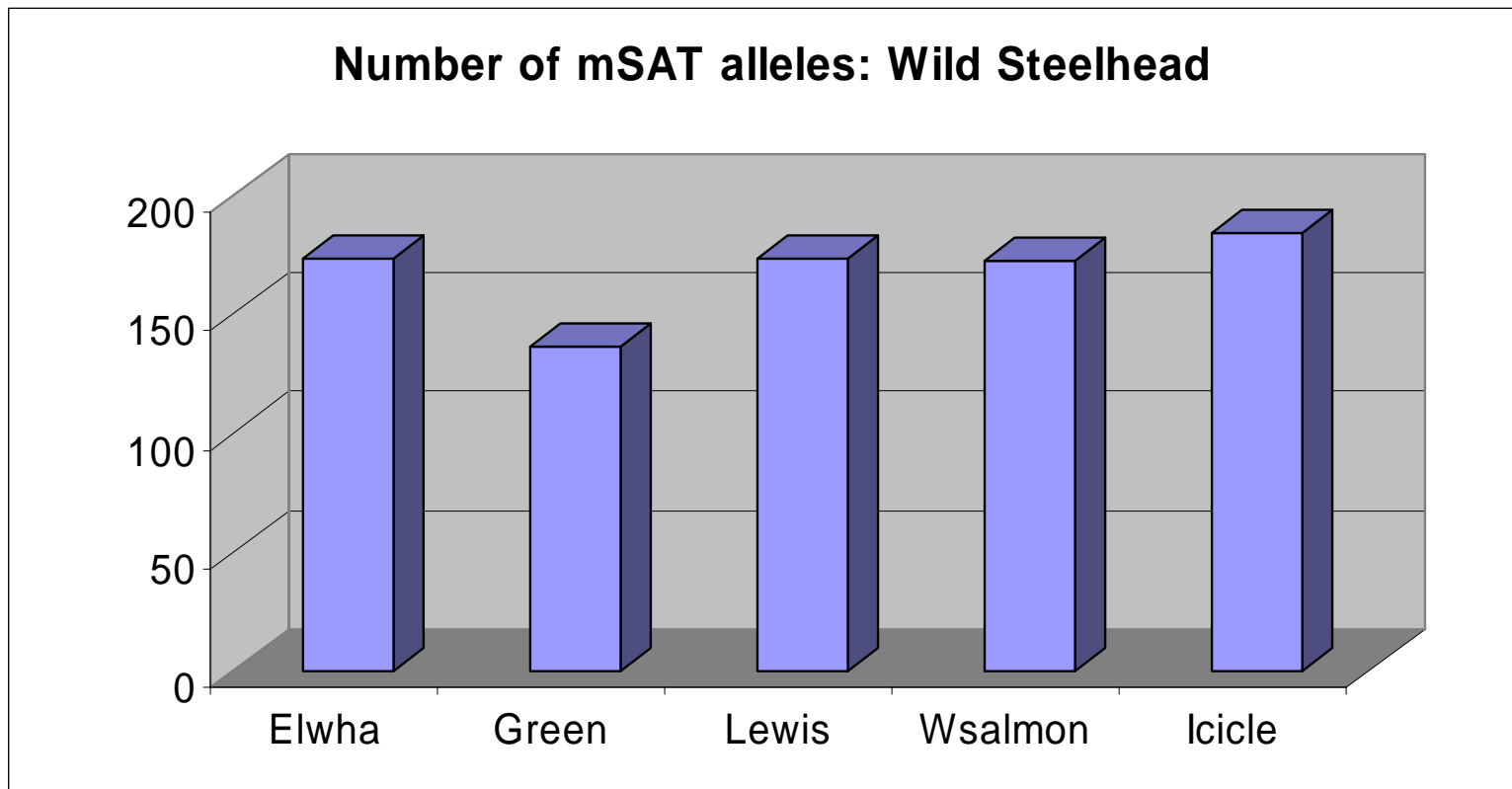


Structure results of Lewis mSATS indicate 6 gene pools.



N=843

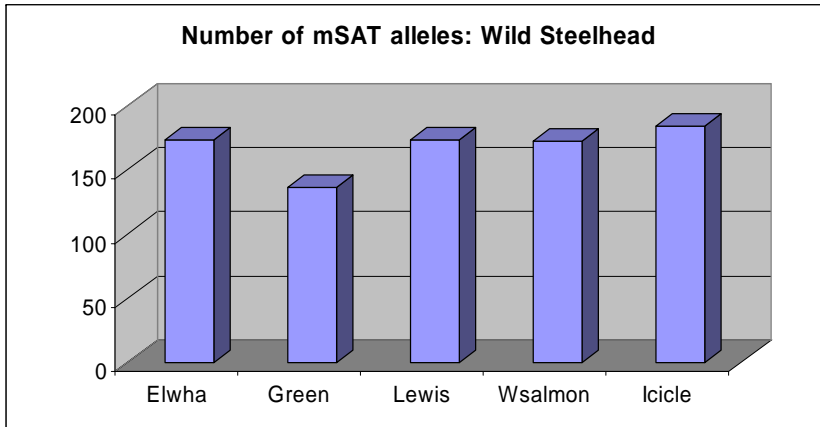
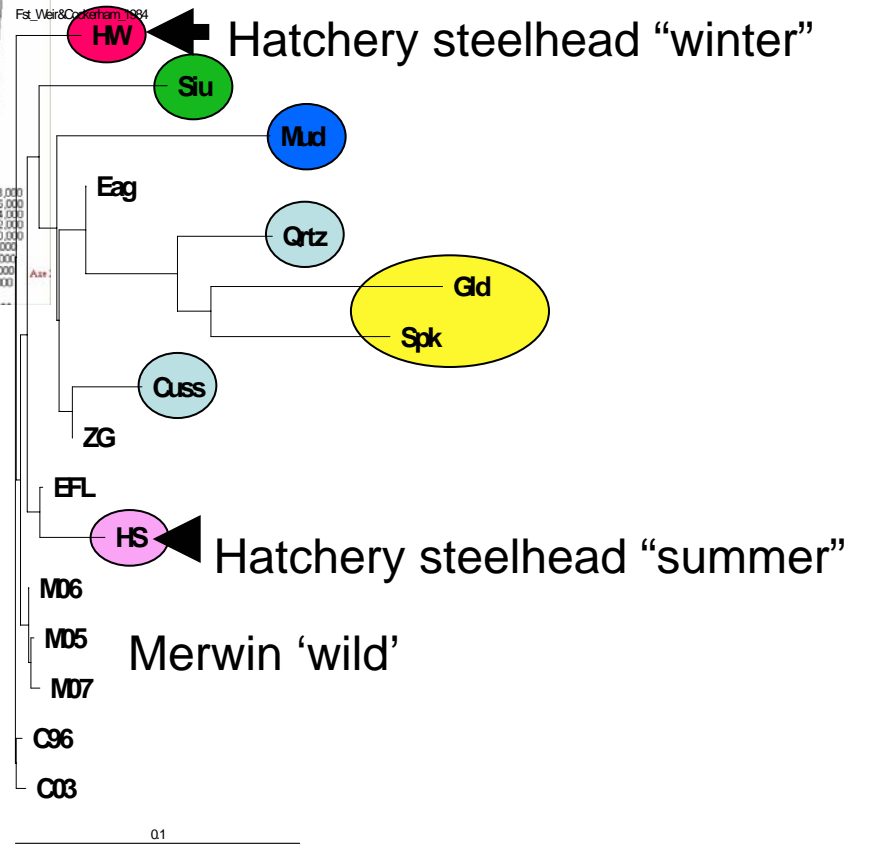
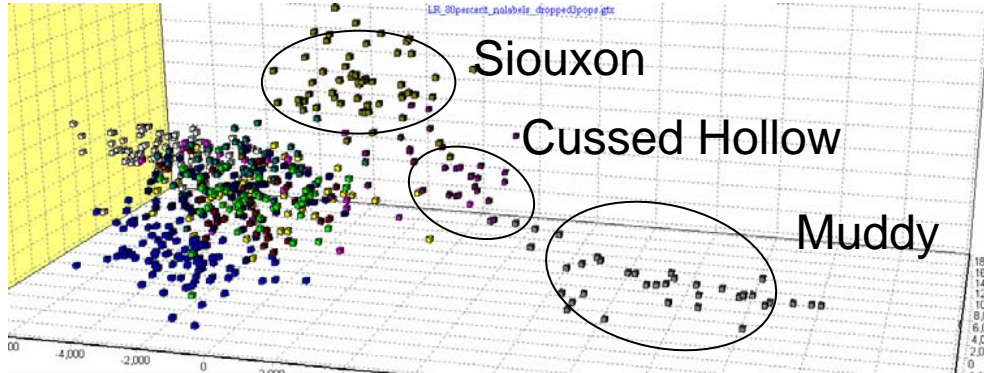
mSAT markers provide a powerful means to monitor the success of recolonization.



168 alleles available to monitor recolonization



mSATs



168 alleles available to monitor recolonization

