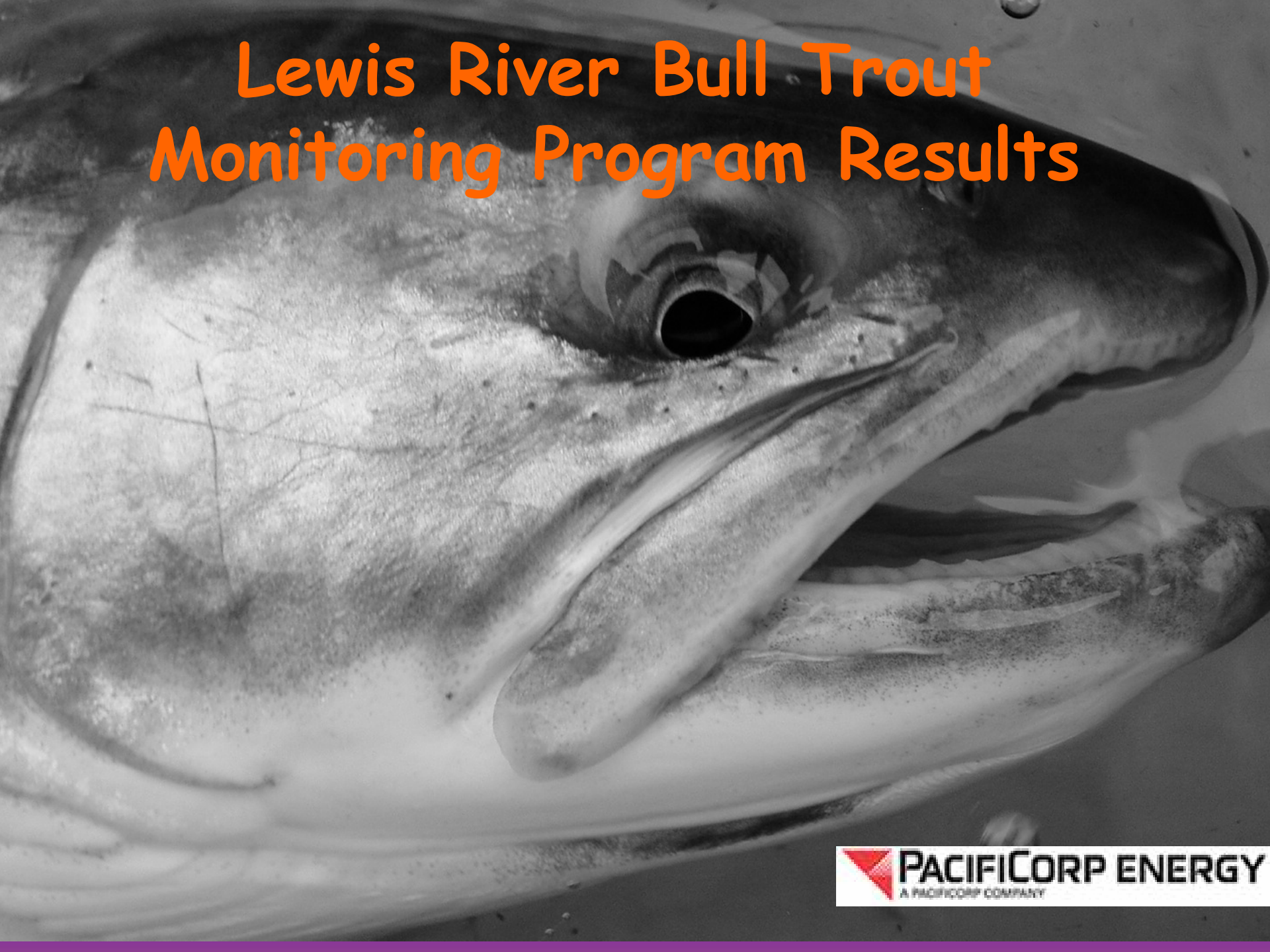


# Lewis River Bull Trout Monitoring Program Results



# Yale Tailrace Netting and Transportation






**Yale Tailrace Capture Site**

Figure 1.2.1

**PACIFIC POWER & LIGHT COMPANY**  
Location of The MERWIN, YALE,  
and SWIFT Hydroelectric Projects  
of The Lewis River



SCALE 1 inch = 2 Miles

































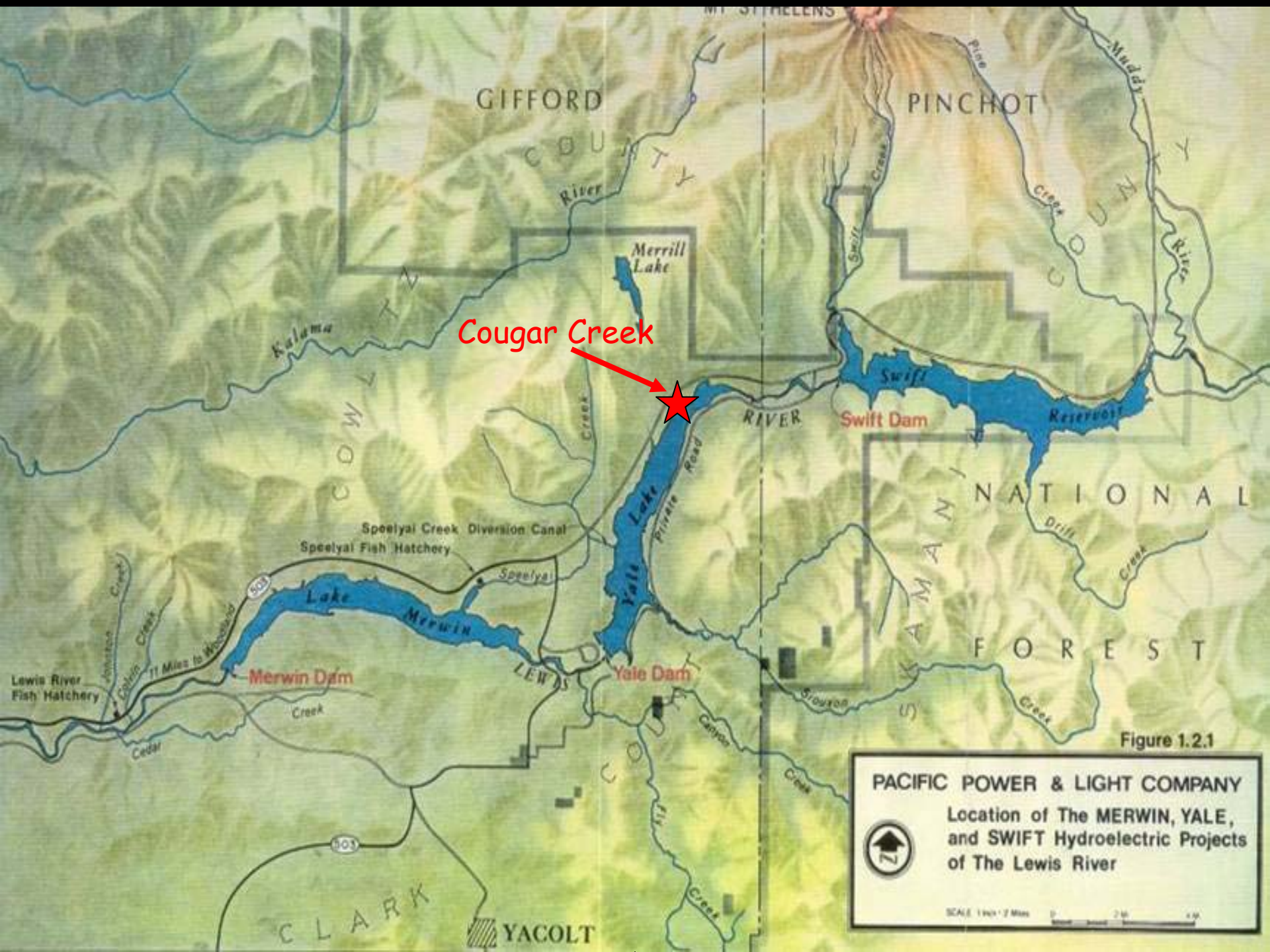
# Number of Bull Trout Captured at the Yale Tailrace











Cougar Creek

Figure 1.2.1

**PACIFIC POWER & LIGHT COMPANY**  
 Location of The MERWIN, YALE,  
 and SWIFT Hydroelectric Projects  
 of The Lewis River

SCALE 1 inch = 2 Miles











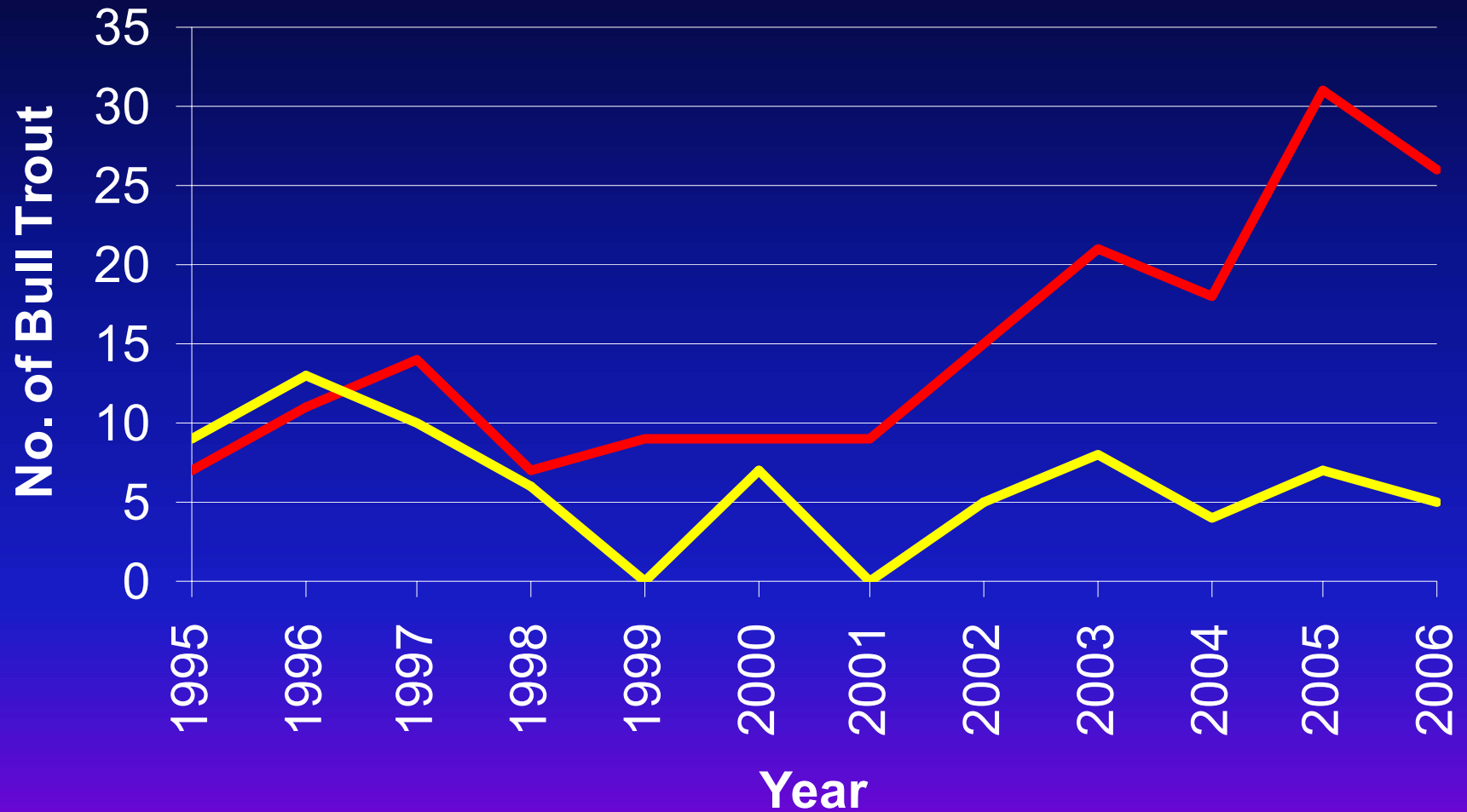








# Proportion of Cougar Creek Peak Counts to the Number of Bull Trout Transported



**—** Cougar Creek Peak Count **—** No. of bull trout transported



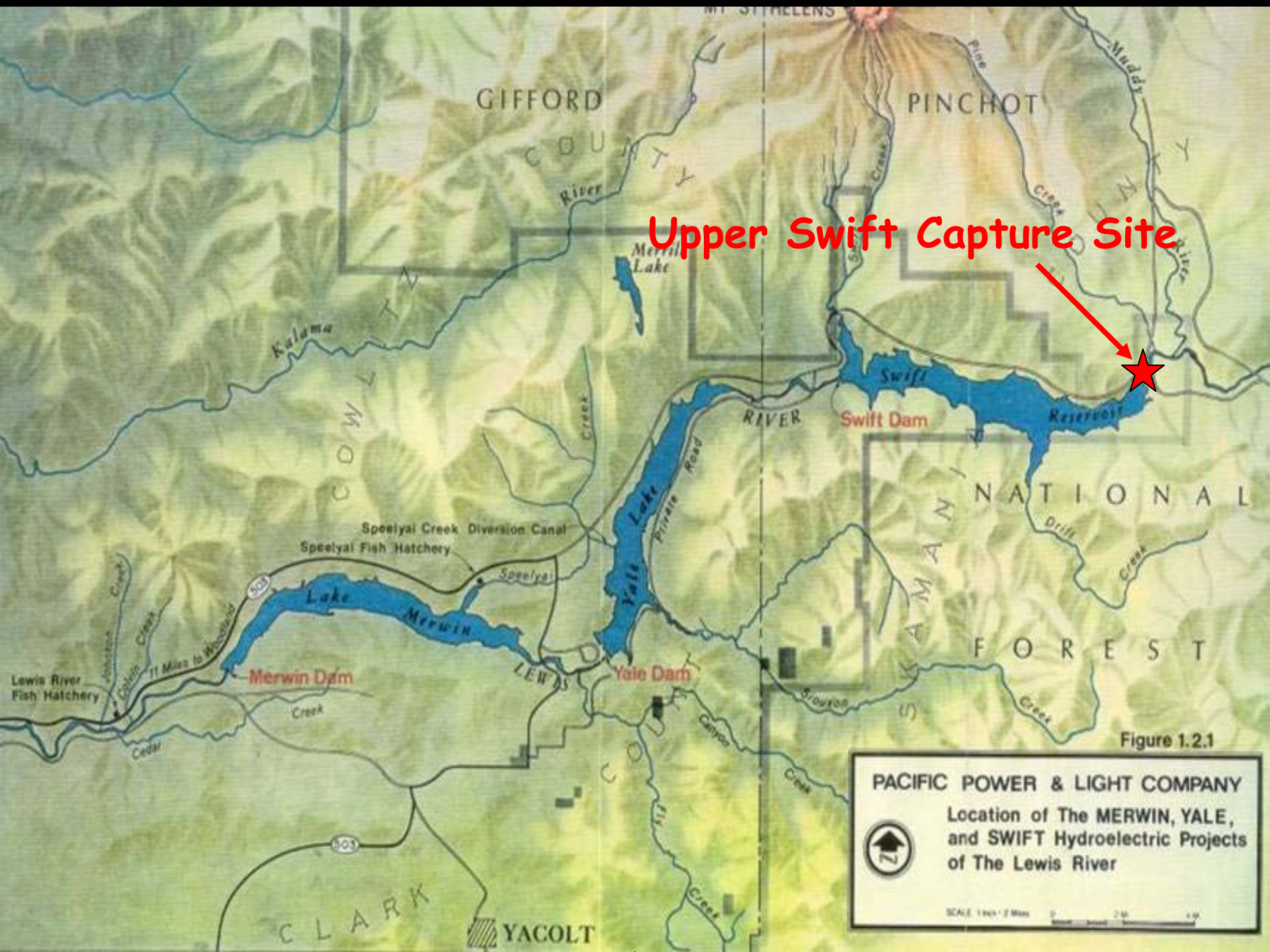
## ARE BULL TROUT TRANSPORTATION ACTIVITIES WORTH IT?

	Peak Count	No. Observed with Tags	Percent Contribution
1995	7	2	29%
1996	11	1	9%
1997	14	3	21%
1998	7	4	57%
1999	9	0	0%
2000	9	1	11%
2001	9	0	0%
2002	15	1	7%
2003	21	1	5%
2004	18	1	6%
2005	31	2	6%
2006	26	1	4%



# Swift Reservoir Capture and Marking






Upper Swift Capture Site



Figure 1.2.1

**PACIFIC POWER & LIGHT COMPANY**  
Location of The MERWIN, YALE,  
and SWIFT Hydroelectric Projects  
of The Lewis River



SCALE 1 inch = 2 Miles















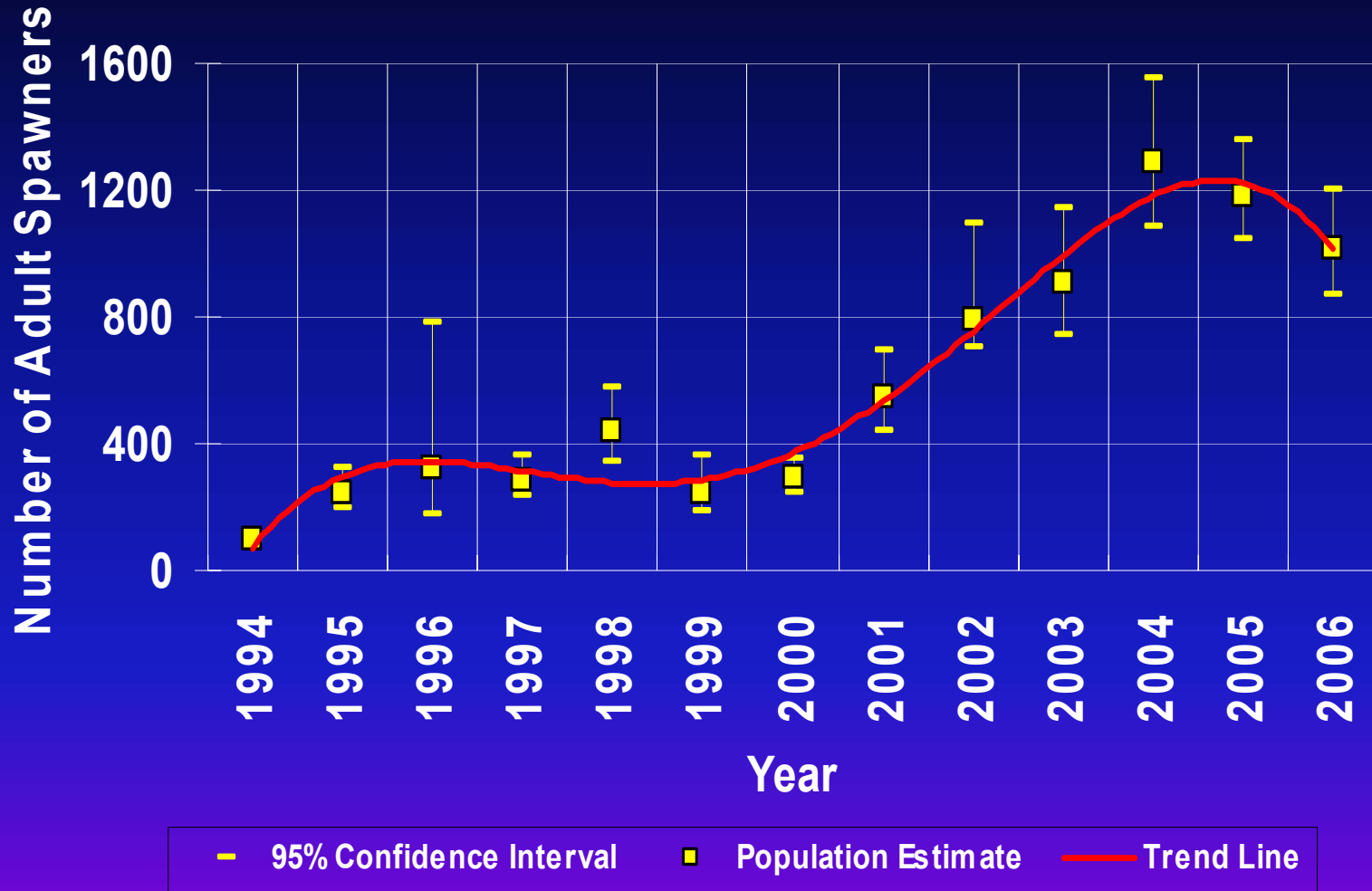




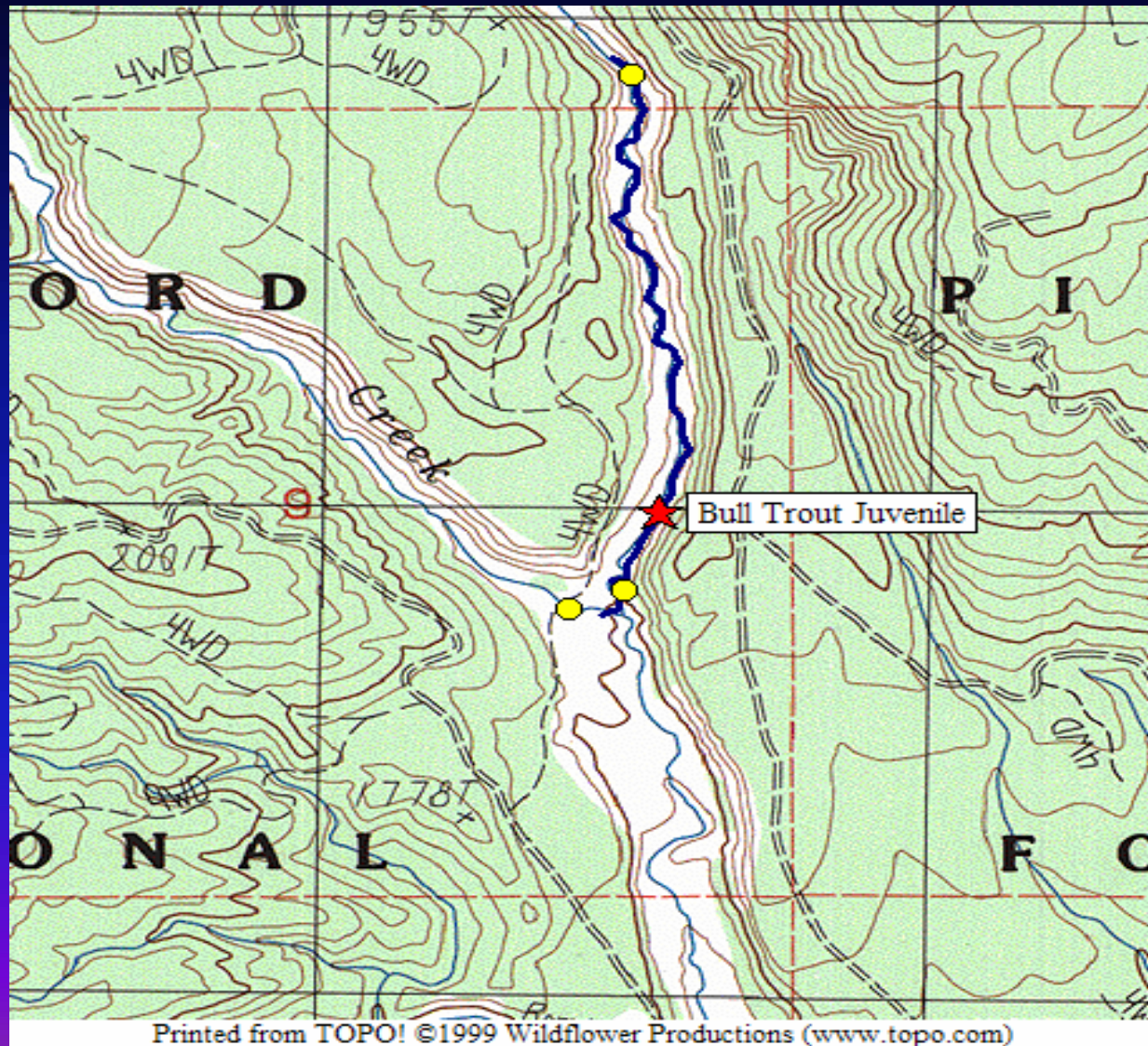




# Swift Reservoir Spawning Estimates

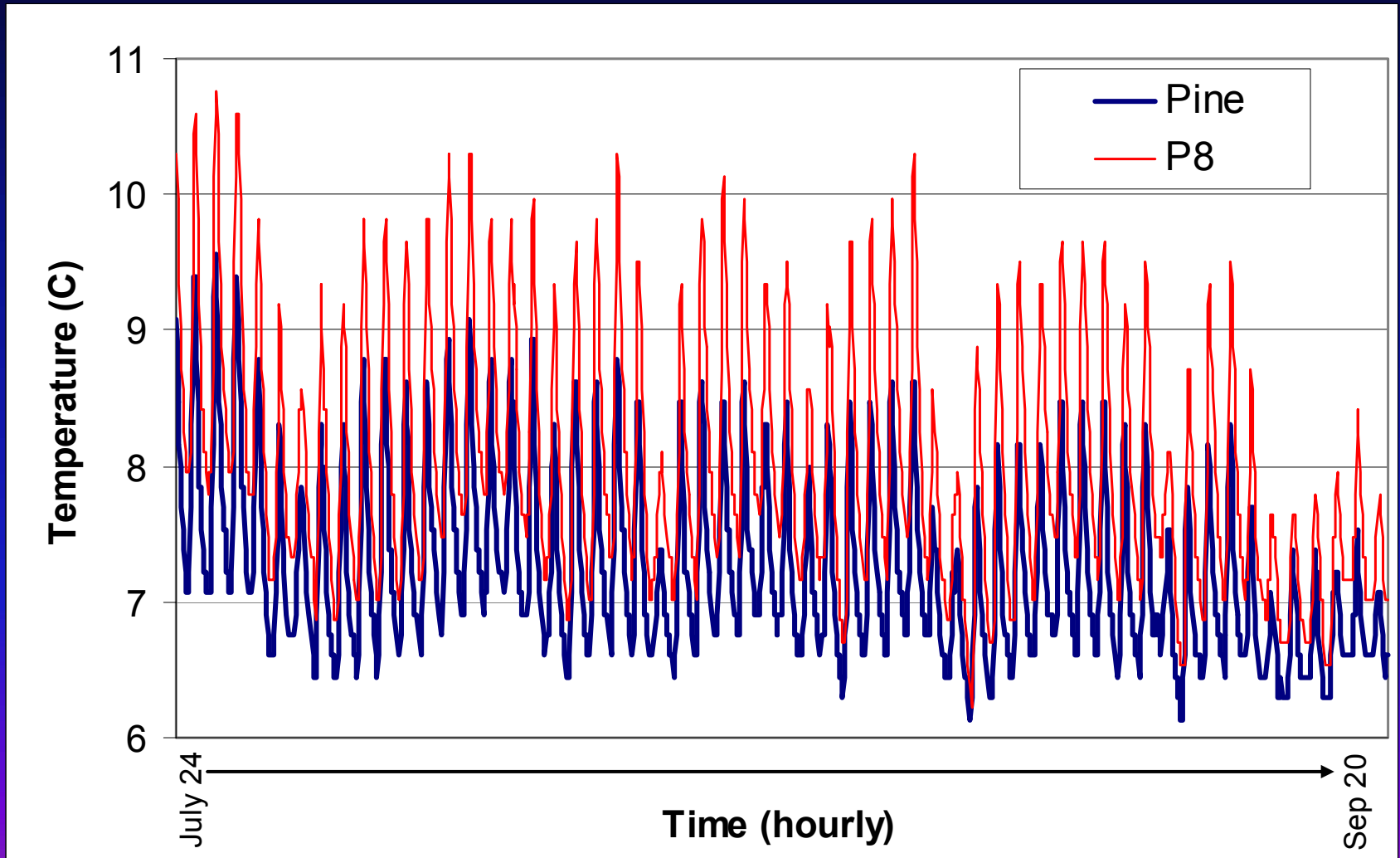


# P8 Bull Trout and Temperature Survey



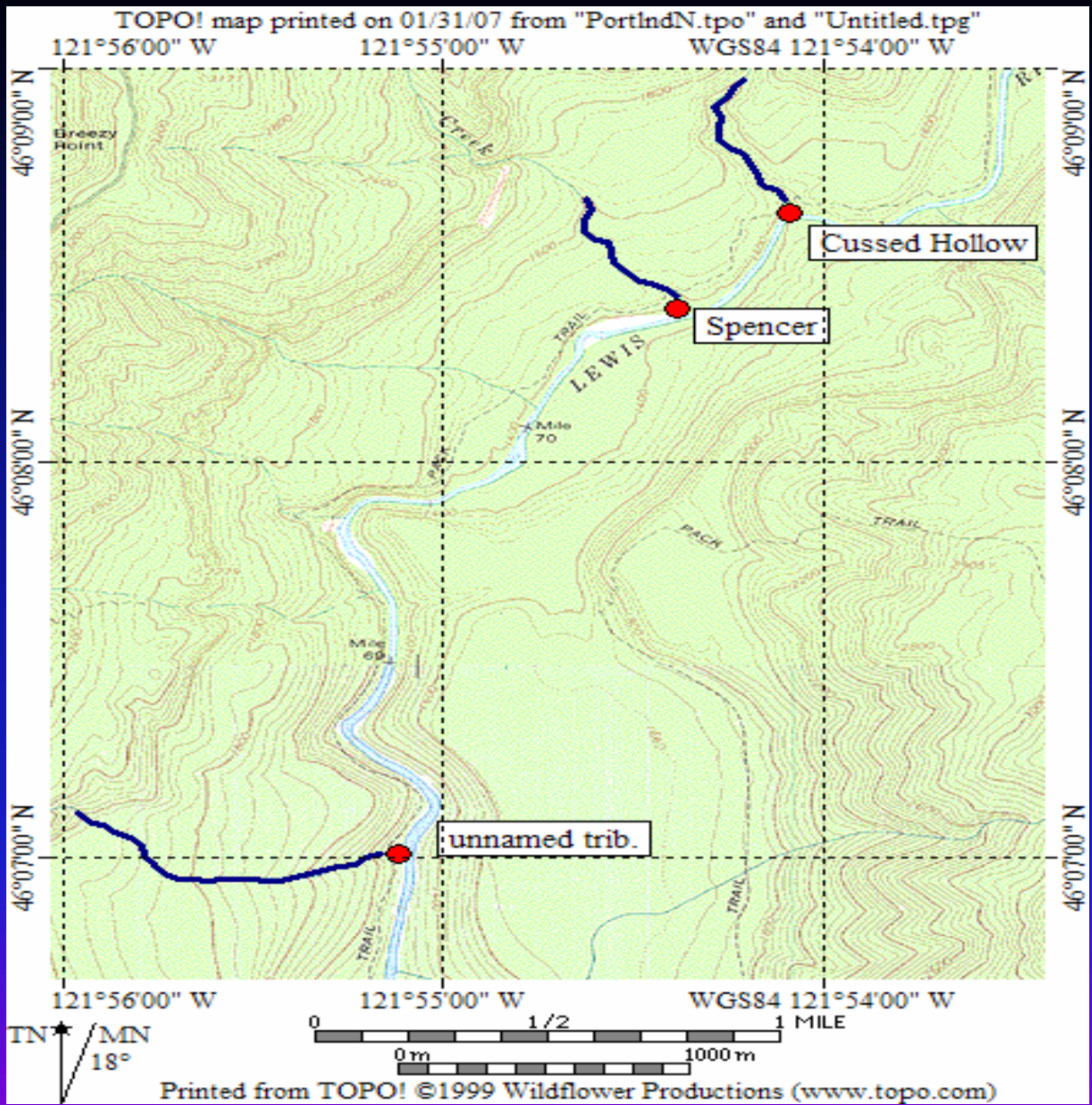


# Temperature Variations Between P8 and Pine Creek



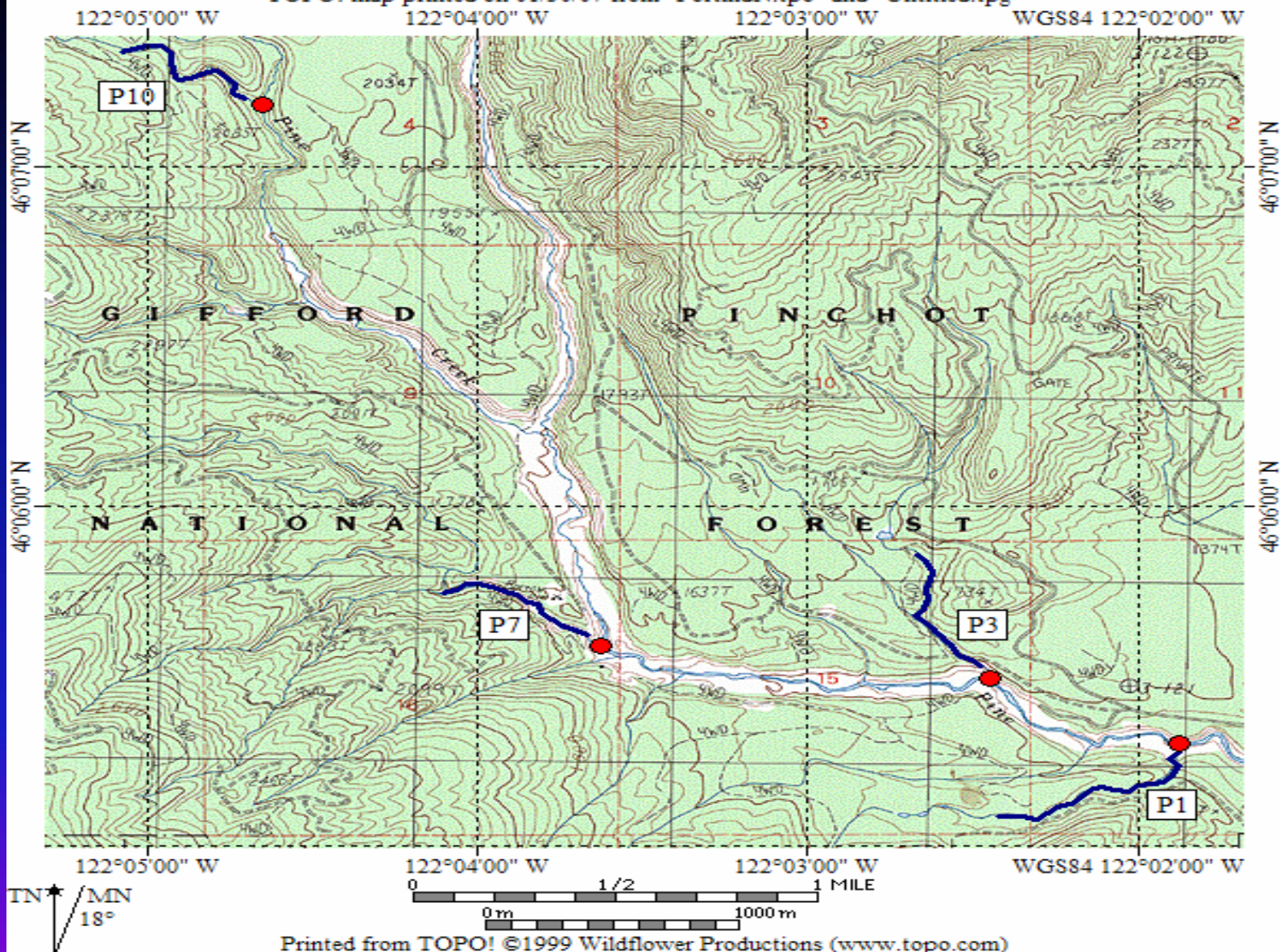


1. Swift Reservoir Bull Trout Spawning Estimate
2. Yale and Swift No. 2 Tailrace Netting and Transportation
3. Pine Creek Tributaries Bull Trout Surveys
4. Swift Creek Bull Trout Surveys
5. Rainbow Trout Stomach Analysis
6. Cougar Creek Spawning Estimate
7. Bull Trout Surveys of the Swift Bypass Reach
8. Upper Rush Creek Survey
9. Upper Lewis Tributary Surveys





TOPO! map printed on 01/30/07 from "PortlndN.tpo" and "Untitled.tpg"



Printed from TOPO! ©1999 Wildflower Productions ([www.topo.com](http://www.topo.com))