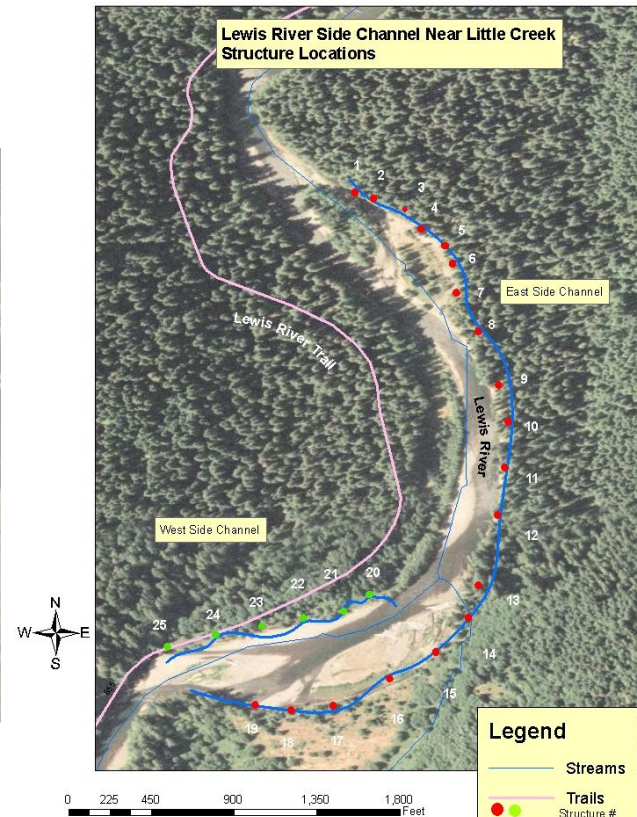


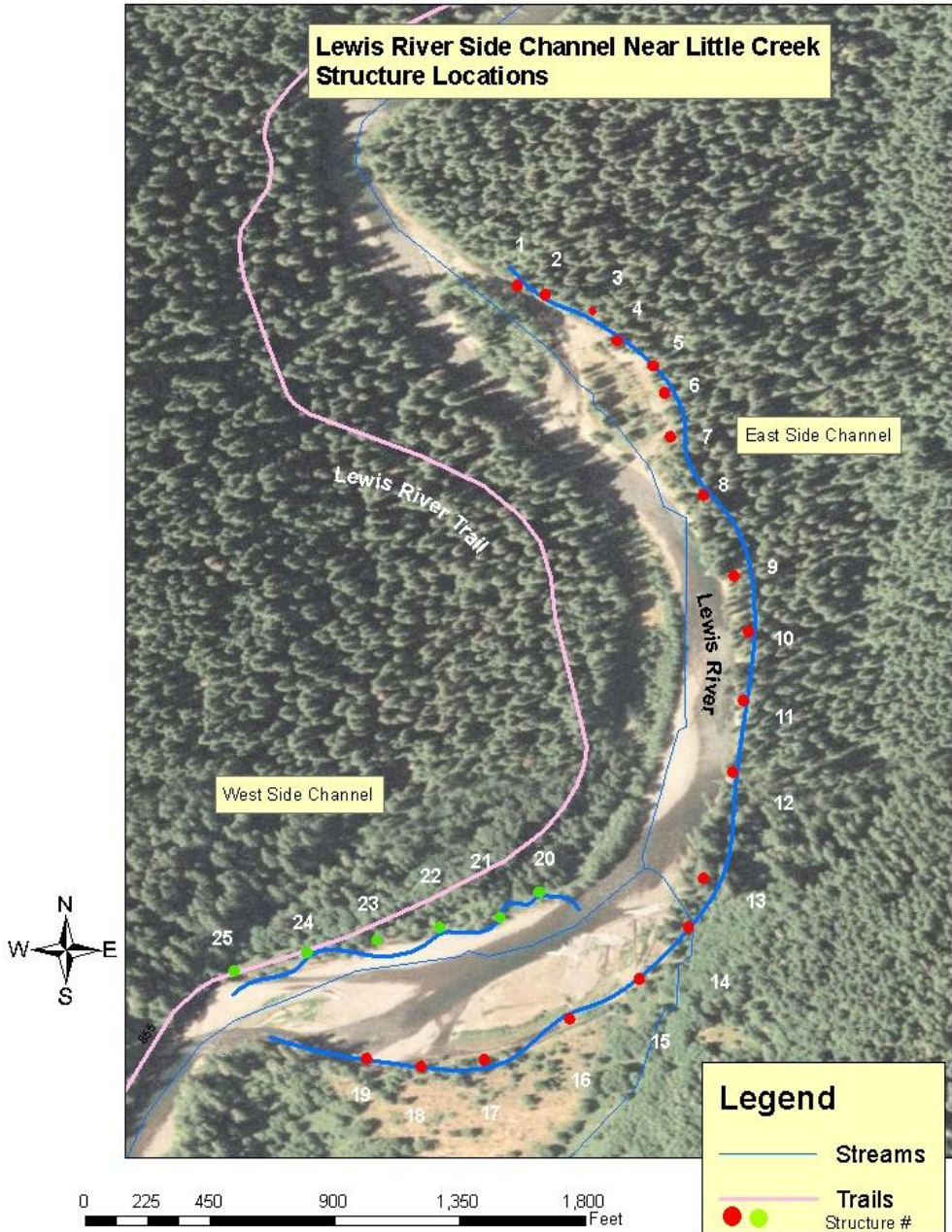
# Lewis River Side Channel 4 Habitat Restoration



# Project Description

- Restore two side channels on the Lewis River with Large Woody Material
- Target Species-Coho Salmon
- Project Length- approximately 3/4 mile
- Approximately 25 structures composed of 300 pieces of LWM with rootwads
- East Side Channel is approximately 3,000 feet long and separated from mainstem by an island.
- West Side Channel is approximately 1,000 feet long and is separated from mainstem by a large gravel bar
- These side channels are located on Forest Service Lands and are near the confluence of Little Creek with the Lewis River

# Lewis River Side Channel Near Little Creek Structure Locations



**Legend**

- Streams
- Trails
- Structure #

0 225 450 900 1,350 1,800 Feet

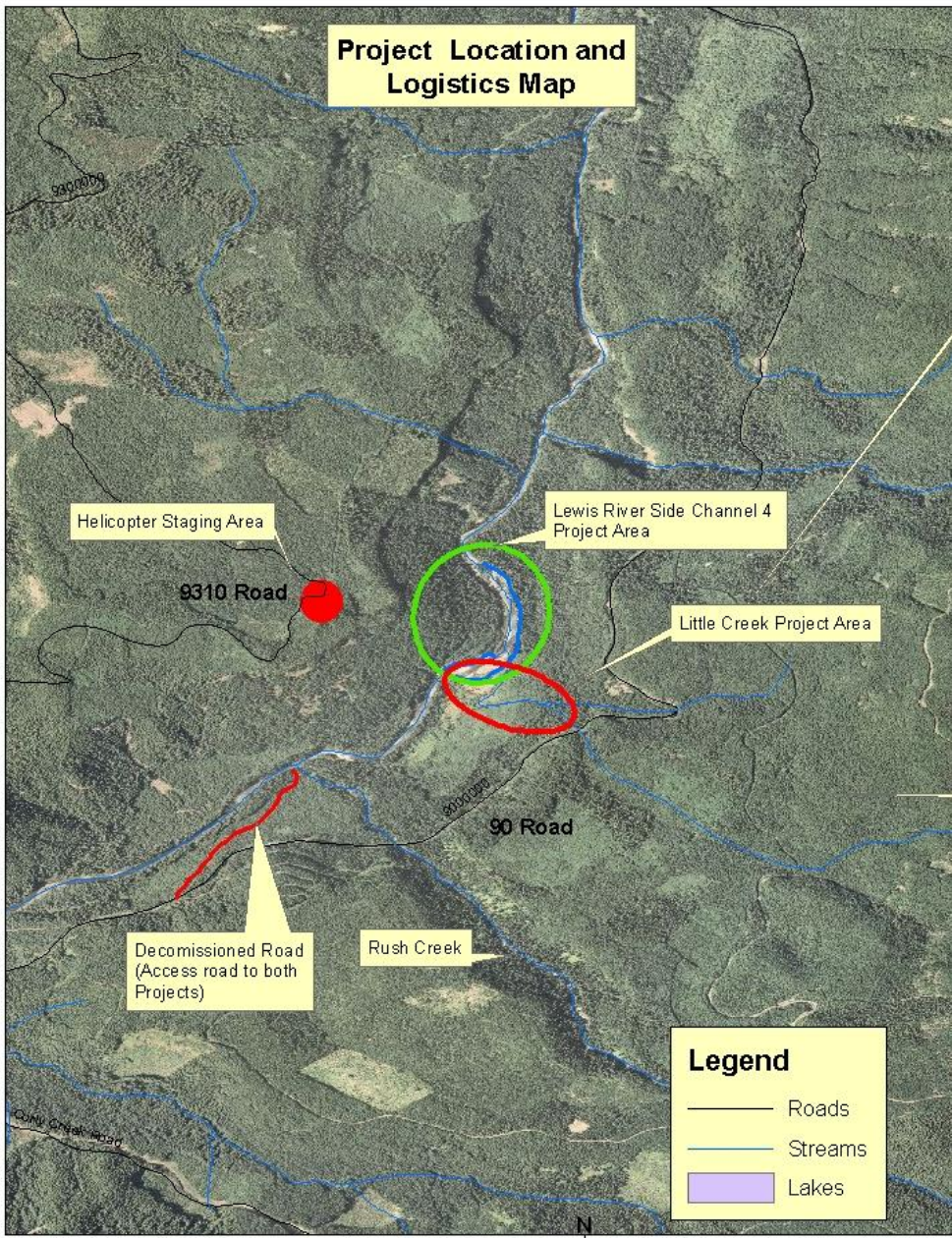
# Salmon Plans

- EDT analyses concludes habitat diversity and side channel habitat is one of the highest concerns in this reach and it should respond well to restoration activities.
- Concerns include high habitat diversity, moderate hatchery fish competition, food availability, and sediment concerns.
- The ACC Synthesis Matrix rated this section of the river as having medium restoration potential and as a Primary coho population area.

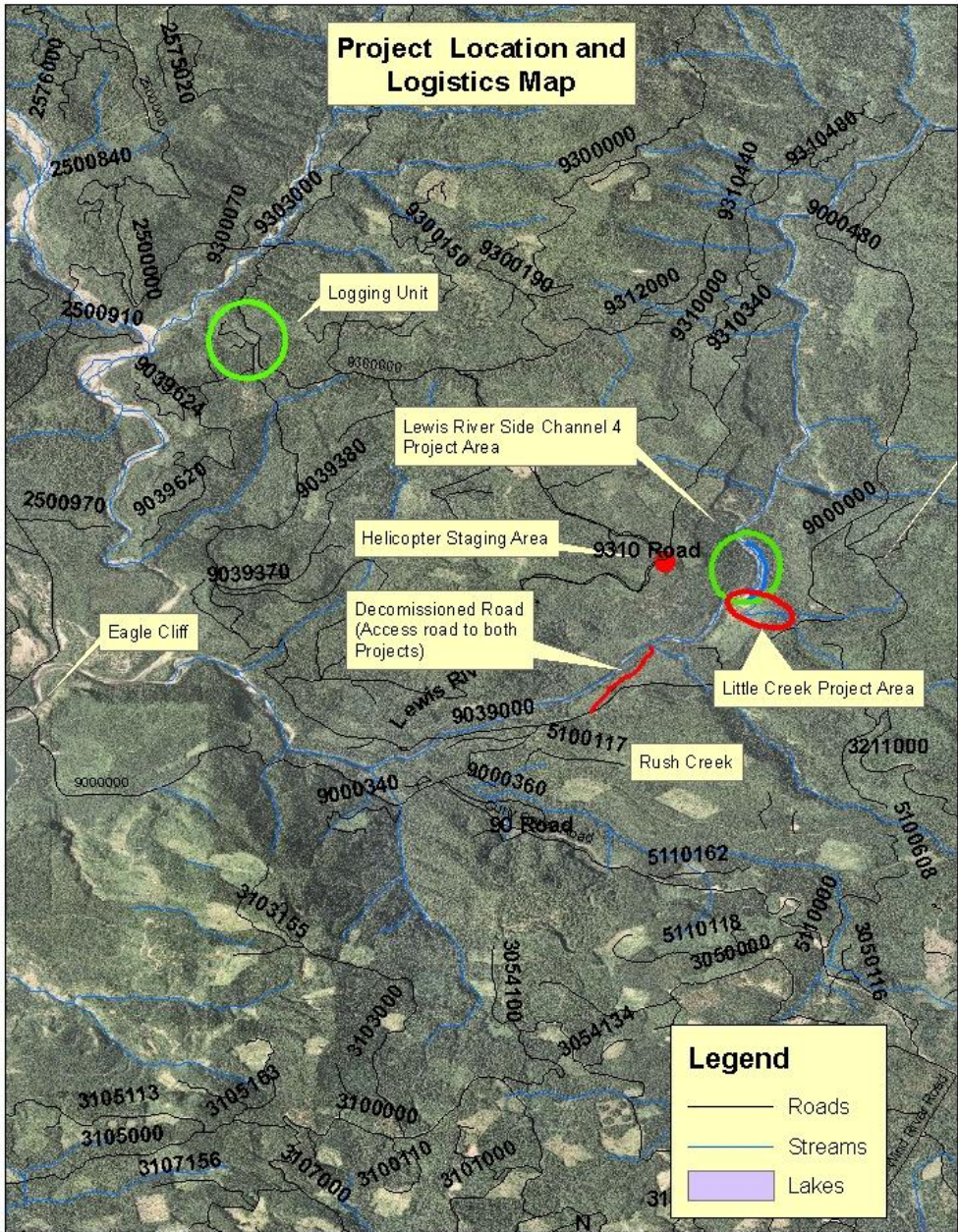
# Methods

- Thin a timber harvest unit from Pepper Cat to get trees with rootwads.
- Truck trees as long as possible from unit and stockpile at a road landing near project site.
- Helicopter trees from landing into side channel.
- Excavator will access site via a decommissioned road near Rush Creek.
- Move trees into final position and install with an excavator.
- Bury some trees for key anchor points and put others on the bank to create LWM clusters

# Project Location and Logistics Map



# Project Location and Logistics Map



## Typical Section of East Side Channel





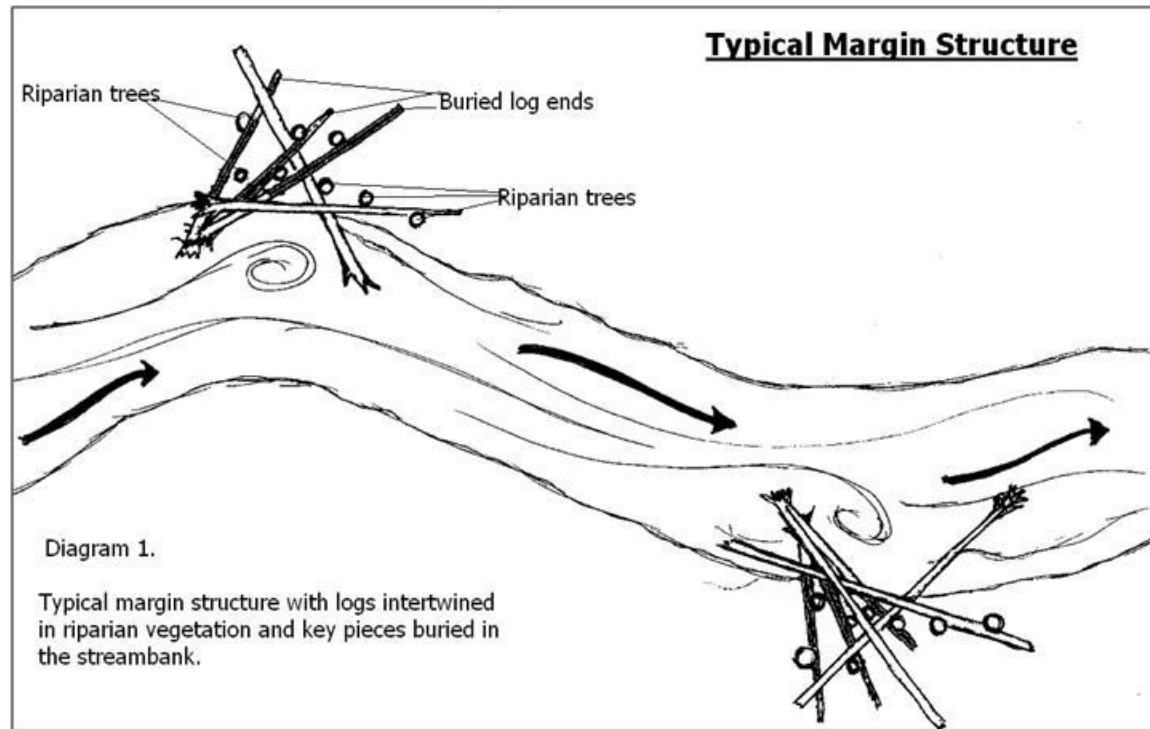
# Typical Section of East Side Channel



# Typical Section of West Side Channel



# Typical Structure



# Project Budget

Action	ACC Funds	Partner Funds
NEPA	\$8,000	
Final Designs and Project Mgmt and Contract Administration	\$8,000	\$14,000
Equipment Contract	\$40,000	\$70,000- LCFRB
Materials	\$1,000	\$45,000
Monitoring	\$3,000	\$2,000
<b>Total</b>	<b>\$60,000</b>	<b>\$131,000</b>

# Project Partners

Partner	Contribution	Funds
Forest Service	Project development, Contracting, Permitting, Monitoring	\$14,000 In-kind
	Trees	\$45,000 In-kind
Mt. St. Helens Institute	Monitoring	\$2,000 In-kind
Lower Columbia Fish Recovery Board	Helicopter Contract Funds	\$70,000 Cash-Proposed