

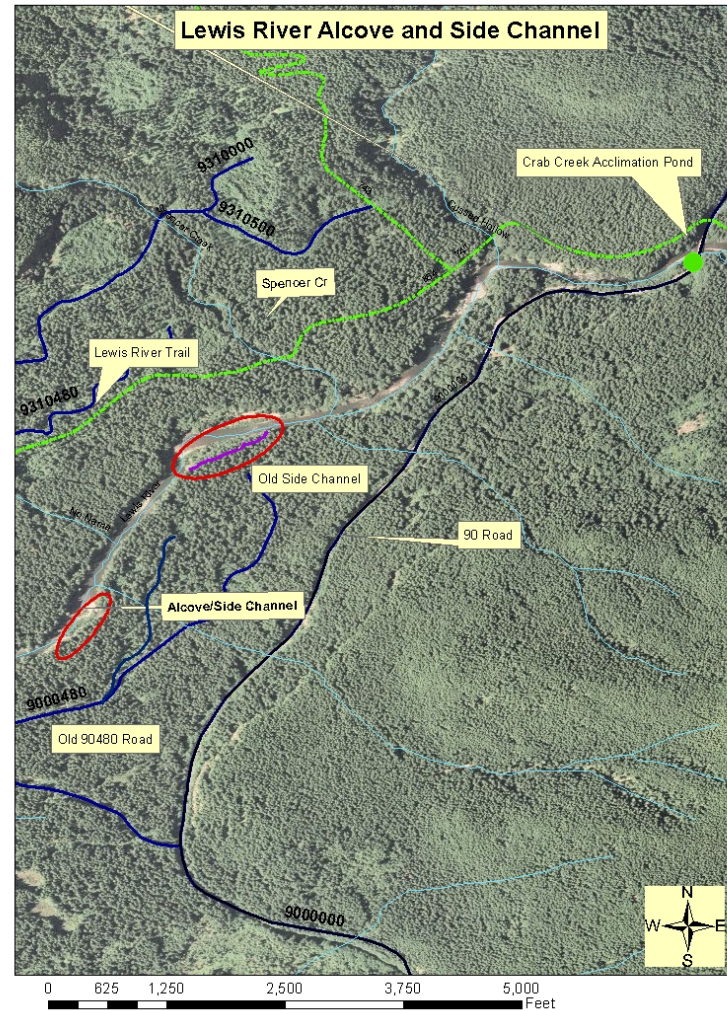
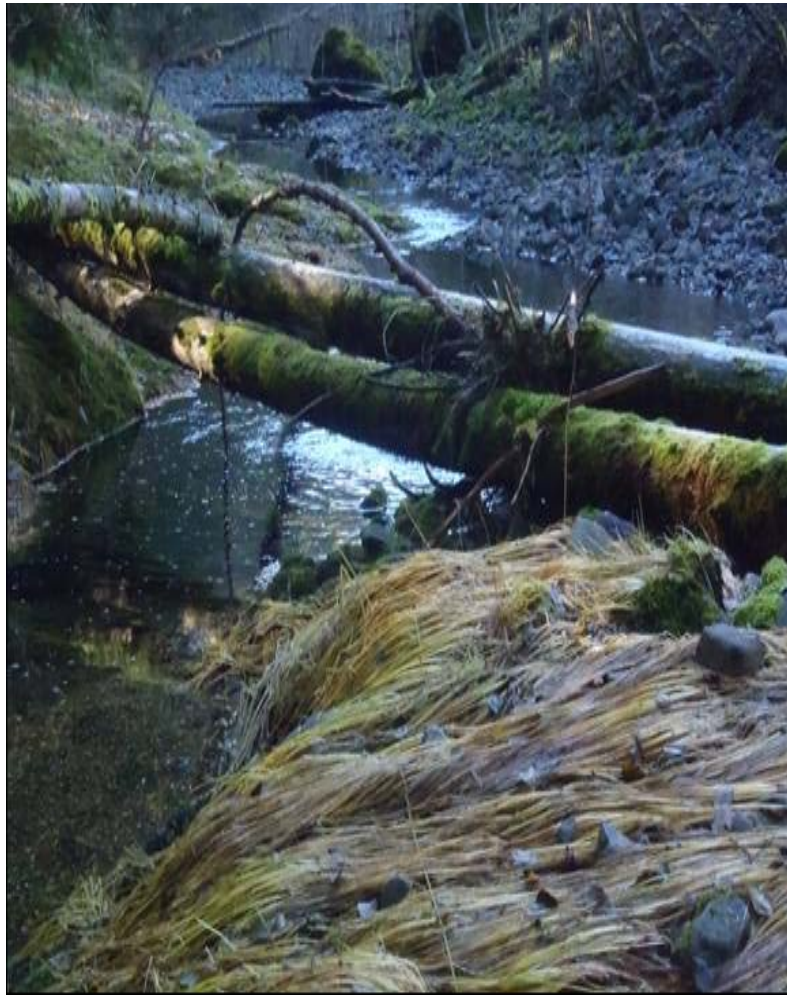


Forest Service Projects

2014



Lewis River Alcove/Side Channel and Old Side Channel Project





Project Description

- **Two main components to the project**
- 1) Restore an Alcove with an associated side channel to full potential using Large Woody Material (LWM)
- Project length – Approximately 350 feet
- Approximately 60 pieces of LWM in 8-10 structures
- Target Species-Spring Chinook (acclimation pond fish), Coho Salmon, Steelhead

Lewis River Alcove/Side Channel



0 80 160 320 480 640 Feet



Alcove/Side Channel





Back end of Alcove



Side Channel associated with alcove



Project Description

- 2) Restore an existing old side channel by removing sediment deposits at the inlet and outlet, and adding Large Woody Material.
- Project length – Approximately 700 feet
- Located approximately 600 feet upstream of the Alcove
- Approximately 200 pieces of LWM in 15 structures
- Target Species-Spring Chinook (acclimation pond fish), Coho Salmon, Steelhead

Old Side Channel





11/3/2011

Old Side Channel

Image USDA Farm Service Agency

Google earth

1995

Imagery Date: 9/25/2011 46° 8.314' N 121° 54.529' W elev 1391 ft eye alt 3390 ft

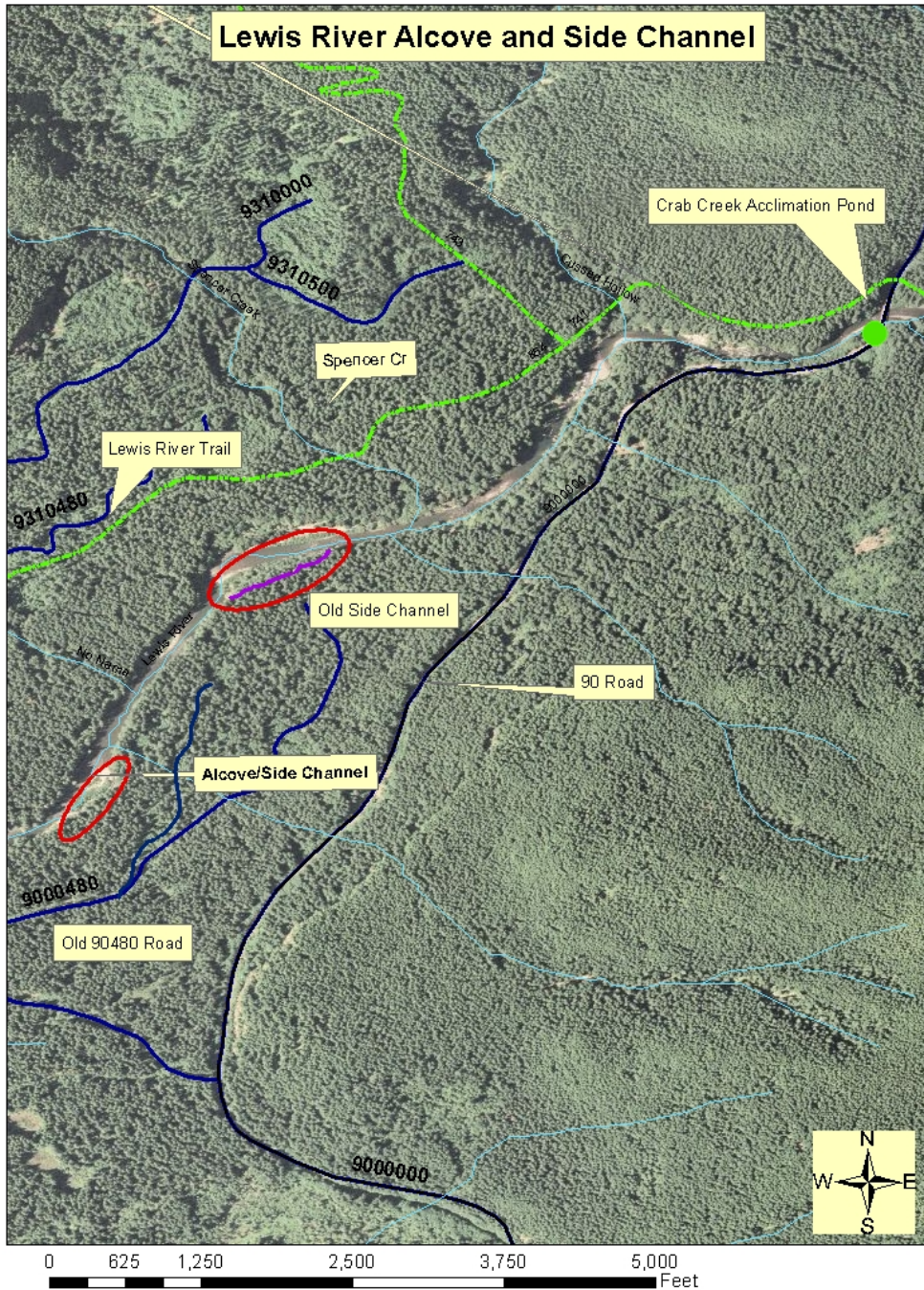


Old Side Channel-looking upstream



Old Side Channel- looking downstream

Lewis River Alcove and Side Channel





Project Budget

Action	ACC Funds	Partner Funds	Project total
NEPA	\$12,000	\$12,000	
Final Designs and Project Mgmt and Contract Administration	\$14,000	\$16,000	
Equipment Contract	\$53,000		
Materials	\$1,000	\$52,000	
Monitoring	\$4,000	\$4,000	
Total	\$84,000	\$84,000	\$168,000



Project Partners

Partner	Contribution	Funds
Forest Service	NEPA, Project development, Contracting, Permitting, Monitoring	\$29,000 In-kind
	Trees	\$52,000 In-kind
Mt. St. Helens Institute	Monitoring	\$3,000 In-kind