

**Lewis River Hydroelectric Projects Settlement Agreement
Lewis River Recreation Coordination Committee (LRC)
Meeting Agenda**

Date & Time: **Wednesday, October 25, 2017
9:30 AM – 11:30 AM**

Place: **Merwin Hydro Facility
105 Merwin Village Court
Ariel, WA 98603**

Contacts: **Lore Boles: (360) 225-4412
Jessica Kimmick: (503) 813-6945**

Time	Discussion Item
9:30 AM	Welcome and Introductions <ul style="list-style-type: none">➤ Preview Agenda
9:40 AM	Rolling Five Year Recreation Action Plan
10:00 AM	Completed Recreation Facility Capital Improvements Program <ul style="list-style-type: none">➤ ADA Site Improvements at Yale Recreation Sites➤ Lewis River Buoy and Swim Boom Project➤ Lewis River Park Kiosk Replacement
10:15 AM	Ongoing Recreation Facility Capital Improvements Program <ul style="list-style-type: none">➤ IP Road Trail Project: update➤ ADA Fishing Access Project: update➤ Cedar Creek Boat Launch: update➤ Yale Day Use Facilities: Saddle Dam Park improvements: update
10:30 AM	Break
10:45 AM	Upcoming Implementation/Other Projects <ul style="list-style-type: none">➤ Eagle Cliff Park Improvements➤ Swift ADA Site Improvements
11:00 AM	Next Meeting <ul style="list-style-type: none">➤ Scheduling➤ Agenda Topics
11:10 AM	Adjourn

Join by phone
[+1 \(503\) 813-5252](tel:+15038135252) [[Portland, Ore.](#)] (PacifiCorp)
[+1 \(855\) 499-5252](tel:+18554995252) [[Toll Free](#)] (PacifiCorp)

Conference ID: 2852572

**FINAL Meeting Notes
Lewis River License Implementation
Lewis River Recreation Committee (LRC) Meeting
October 25, 2017
Merwin Hydro Control Center**

LRC Participants Present (12)

Kim McCune, PacifiCorp
Jessica Kimmick, PacifiCorp
Peggy Miller, WDFW
Todd McDaniel, Cowlitz County Sheriff's Office
Alex Schoening, Clark County Sheriff's Office
Amanda Froberg, Cowlitz PUD
Nathan Reynolds, Cowlitz Indian Tribe
Ruth Tracy, USDA FS
Bill Bjerke, Clark County
Mariah Reese, Lewis River Community Council
Jeremy Kanooth, Clark County
Rex Happla, DNR

Assignments from October 25, 2017 Meeting	Status
McCune: Email Ruth Tracy the links to the Lewis River Dispersed Campsites Program Monitoring Report – January 2010	Complete – 10/25/17
McCune: Send Outlook invite to Ruth Tracy for 2018 Dispersed Camping Meeting, typically held in February of each year.	Complete – 10/25/17
Bjerke: Provide magnesium chloride product detail to Kimmick.	Complete – 10/25/17
McCune: Order one (1) Lewis River wall map for Alex Schoening, Clark County Sheriff's Office.	Complete – 10/27/17

Opening, Review of Agenda and Meeting Notes

Jessica Kimmick (PacifiCorp) called the meeting to order @ 9:30 a.m.

Rolling 5-Year Recreation Action Plan

Kimmick provided a thorough review of the Lewis River Rolling 5-Year Recreation Action Plan (**Attachment A**), which was emailed to the LRC for its review October 2, 2017.

Completed Recreation Facility Capital Improvements Program (see PowerPoint, Attachment B)

- ADA Site Improvements at Yale Recreation Sites – completed the following improvements:
 - 4 individual and 2 group camping ADA sites at Beaver Bay and Cougar each
 - 2 ADA dishwashing sinks installed at Cougar
 - 1 ADA dishwashing sink at Beaver Bay
 - 1 ADA picnic site at Beaver Bay day use area
 - Modified parking spot at Beaver Bay group camp shelter to ADA standards

- Hand rails added at Speelyai boat launch
 - Added asphalt van parking with direct access to boat launch at Yale Park
 - Fire pit and benches modified to ADA standards at Beaver Bay group camp
 - Added ADA picnic tables in shelter at Beaver Bay group camp
 - 2 ADA picnic sites created at Cougar Park group camp picnic area
- Lewis River Buoy and Swim Boom Project - completed the following improvements (all buoys indicate no wake zone):
- New swim boom at Cresap Bay Park
 - 3 new buoys at Swift
 - 3 new buoys at Yale Park
 - 3 new buoys at Cougar Park
 - Repositioned 5 buoys and added several new at Cresap Bay Park to encompass swim area, boat launch and moorage area
 - Added 4 buoys at Yale Narrows area just upriver of Cresap Bay Park
 - Replaced all broken buoys
 - Replaced all cables and anchors on existing buoys
 - 3 new buoys for moorage area of Woodland Park
- Lewis River Park Kiosk Replacement – completed the following improvements:
- Installed triple kiosks at Cougar, Cresap, Swift and Beaver Bay
 - Installed single pane in all day use areas

Ongoing Recreation Facility Capital Improvements Program

- IP Road Trail Project – Completed all design work for construction of trailhead and other amenities including bridge railing; brought up to Forest Practice Standards per RMAP requirements. Working on permitting but shifted completion into 2018 budget schedule as we work with Clark County vs. Forest Practices Act permitting requirements. There is a disagreement with Clark County regarding code requirements. Attorneys for both parties are discussing.
- Saddle Dam Park – Park improvement construction is currently underway with an estimated completion by 2017 year end.
- ADA Fishing Access Project and Cedar Creek Boat Launch – Moving forward with design work while WDFW and DNR work out shoreline agreements. 30% design is planned for review by WDFW in November 2018. Work is planned for 2019 completion.

Break <10:35am>

Reconvene <10:45am>

Upcoming Implementation/Other Projects

- Eagle Cliff Park Improvements – Design work begins November 2017 and completing by April 2018 based on Recreation Facilities Master Plan conceptual. The improvements will include delineated parking area; moving picnic area close to parking area, vault toilet, ADA facilities and plantings to manage storm water drainage.
- Swift ADA Site Improvements – partially completed, budgeted and in the parking lot cannot confirm which year it will be completed at this time. An update will be provided in

the Rolling 5-Year Recreation Action Plan. Items to be included is an ADA access to the boat launch, vault toilet by the boat launch and site improvement in the campground.

Other

Saddle Dam Dust Abatement - The LRC indicated that the Saddle Dam dust is a problem to users. Kimmick indicated that PacifiCorp is aware and is researching environmental friendly products to use as dust abatement. Any chemical product will require PacifiCorp environmental review and local county permitting. Asphalt may be a better option. Bill Bjerke (Clark County) expressed that they use a magnesium chloride product which could be a possibility. Bjerke will get the information to Kimmick.

Dispersed Camping Management - Ruth Tracy (USFS) would like to have further discussion around the Lewis River Dispersed Campsites Management to include, but not limited to, Drift Creek, hardening sites, offering to other land owners, 4E requirements, etc. McCune indicated she will research the Settlement Agreement, License requirements, RRMP and report back to Tracy as to PacifiCorp's obligations.

Caretaking of Merwin Park Grounds – Mariah Reese (Lewis River Community Council) communicated that the goose feces at Merwin Park and Speelyai is a problem. She would like PacifiCorp to add caretaking of grounds by camp hosts to include raking goose feces from the lawn areas. In addition, she expressed that there have been incidents where the camp hosts have not been adhering to the open/close gate hours (closing gates early). Kimmick responded that PacifiCorp will expressly address this issue in the camp host training next May 2018. She further communicated that PacifiCorp has included increased staffing requirements in its request for proposal in its bid package for next year as well.

Next Scheduled Meeting:

Fall 2018 (Date & Time TBD); 4 th
Wednesday of October is preferred
Merwin Hydro Control Center
Ariel, WA

Meeting Handouts & Attachments:


- Agenda from 10/25/17
- **Attachment A** - Lewis River Rolling 5-Year Recreation Action Plan,
- **Attachment B** – Capital Improvements LRC Meeting, October 25, 2017

Meeting adjourned at 11:20a.m.

ROLLING 5-YEAR RECREATION ACTION PLAN CALENDAR YEAR 2017

**Lewis River Hydroelectric Project
FERC No. P-935, P-2071 and P-2111**

AUTHORIZATION

Final
Approved: PacifiCorp 11/3/17 (date)  (signature)

ATTACHMENTS

- Meeting Notes – From Recreation Work Group Meeting (February 24, 2016 and October 26, 2016)

Program/Activities	Action Lead	Prior Year	Current Year	Out Year #1	Out Year #2	Out Year #3
		CY 2016	CY 2017	CY 2018	CY 2019	CY 2020
RRMP Section 2.7: Periodic Reporting to the FERC						
12 Year RRMP Review, update and submittal to the FERC	PacifiCorp					X
Collect recreation facility use data for analysis and inclusion in the FERC Form 80 report	PacifiCorp					X
Develop monitoring report to accompany FERC Form 80 submittal	PacifiCorp					X
RRMP Section 3.1: Recreation Facility Capital Improvement						
Working with DNR to secure a lease agreement for a trailhead location for the IP Road Trail Project.	PacifiCorp	X	X			
IP Road Trail Project construction of trailhead and other amenities				X		
Provide Saddle Dam Park improvements to include group picnic shelter, off-shore boat anchors and ADA access.	PacifiCorp	X	X			
Provide a site plan, conceptual design and an ADA Fishing Access Feasibility Study to the LRC for review.	PacifiCorp	X				
Install ADA fishing platform at Lewis River Hatchery	PacifiCorp and WDFW	X	X	X		
Complete Yale Reservoir ADA Site Improvements at Beaver Bay and Cougar Park to include re-decking and ADA improvements to Cougar Camp boarding float.	PacifiCorp		X			
Upgrade Cedar Creek Boat Ramp to include a new single lane ramp.	PacifiCorp and WDFW	X	X	X		
Install a double vault toilet; create picnic area and remove old picnic facilities at Eagle Cliff Park	PacifiCorp		X	X	X	

Program/Activities	Action Lead	Prior Year	Current Year	Out Year #1	Out Year #2	Out Year #3
		CY 2016	CY 2017	CY 2018	CY 2019	CY 2020
Provide 2-3 picnic tables at each of the lower Lewis River access sites.	PacifiCorp				X	
Redesign Beaver Bay Park and Campground	PacifiCorp					X
Improve overflow parking in the quarry area at Speelyai Bay Park and evaluate feasibility of providing additional parking with trail access to boat launch	PacifiCorp					X
Complete Swift Reservoir ADA Site Improvements at Swift Forest Camp	PacifiCorp			X	X	
RRMP Section 3.2: Recreation Facility Operation and Maintenance						
Launched new recreation reservation system to provide option of making reservations 9-months in advance.	PacifiCorp and Thousand Trails	X				
WDFW to secure aquatic land lease from DNR to repair Cedar Creek Boat Launch and construct ADA Bank Fishing platform.	PacifiCorp, WDFW & DNR	X	X			
Re-anchor all existing reservoir buoys and add new buoys	PacifiCorp	X				
Replace information signs and install new updated informational signs in the Lewis River park kiosks.	PacifiCorp	X				
Replace stair treads with heavier weight new tread for the Yale Bridge non-motorized boat access.	PacifiCorp	X				
Apply for permits and implement drinking water compliance measures annually	PacifiCorp Dept. of Health/ Cowlitz/ Skamania Counties	X	X	X	X	X

Program/Activities	Action Lead	Prior Year	Current Year	Out Year #1	Out Year #2	Out Year #3
		CY 2016	CY 2017	CY 2018	CY 2019	CY 2020
Apply for County RV Park Operating Permits and perform corresponding site inspections annually	PacifiCorp Cowlitz County	X	X	X	X	X
RRMP Section 3.3: Recreation Dispersed Shoreline Use						
Maintain shoreline camping and day use sites	PacifiCorp	X	X	X	X	X
Provide \$5,220 in 2004 dollars annually to the USDA-FS for Dispersed Camping Management Funding.	PacifiCorp	X	X	X	X	X
Implement appropriate method of waste disposal management for dispersed campsites on Swift and Yale Reservoirs.	PacifiCorp	X	X	X	X	X
Implement dispersed campsite management controls	PacifiCorp	X	X	X	X	X
RRMP Section 3.4: Recreation Monitoring						
Monitor dispersed sites for maintenance needs	PacifiCorp	X	X	X	X	X
Monitor dispersed sites for site resource impacts	PacifiCorp	X	X	X	X	X
RRMP Section: 3.5: Interpretation and Education Program						
Redesign and install Eagle Cliff Interpretive signs.	PacifiCorp	X	X	X		
Campfire talks program provided by the U.S. Forest Service continue during July and August recreation season.	U.S. Forest Service	X	X	X	X	X
Install Saddle Dam Park Interpretive signs	PacifiCorp		X			
RRMP Section 3.7: Reporting						
Prepare RAP status report for Annual LRC Meeting.			X			

Program/Activities	Action Lead	Prior Year	Current Year	Out Year #1	Out Year #2	Out Year #3
		CY 2016	CY 2017	CY 2018	CY 2019	CY 2020
Complete the upcoming RAP, including the prior year, current year, and out years.			X			

SUMMARY OF RESULTS FROM THE PREVIOUS RRMP CALENDAR YEAR ACTION PLAN

Capital Improvement Projects Completed Last Year (CY 2016)

- Marble Creek Trail interpretive signs: developed and installed.

Projects Not Completed and Carried Forward to the Current Year (CY 2017)

- Eagle Cliff Park interpretive signs: developed in 2016 but not installed due to information included on the signs about the juvenile fish acclimation ponds. The Aquatic Coordination Committee has agreed that these acclimation ponds, which received significant damage and were rendered inoperable following a 2016 high flow event, should be removed. Accordingly, the signs will be revised to remove the information about them.

Unanticipated Events in 2016

- Existing Lewis River buoys were reset with new anchor systems, and additional buoys were placed for public safety purposes.
- Existing park kiosks were replaced, and new ones installed where there were none before.

CHANGES IN RRMP RESPONSIBILITIES OF THE PARTIES: ASSUMPTIONS, RATIONALE, AND PERCENTAGES

None

McCune, Kimberly

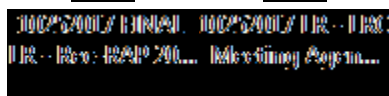
Subject: Lewis River Recreation Committee (LRC) Meeting
Location: Merwin Hydro Control Center

Start: Wed 10/25/2017 9:30 AM
End: Wed 10/25/2017 11:30 AM
Show Time As: Tentative

Recurrence: (none)

Meeting Status: Not yet responded

Organizer: McCune, Kimberly
Required Attendees: Amanda Froberg; Bill Bjerke; Bob Rose; Chelsea Muise; Dan Haws; Deb Schoenberg; Deputy Pat Bond; James H Malinowski; Jeremy Kanooth; Kimmick, Jessica; Leslie Connelly; Mariah Stoll-Smith Reese; Mayor Will Finn; Mike Moss; Nathan Reynolds; Noel Johnson; Olson, Todd; Pam Johnson; Peggy Miller; Rose, Robin G -FS; Ruth Tracy; Sgt. Alex Schoening; Susan Rosebrough (NPS); Todd McDaniel; rex.hapala@dnr.wa.gov



Please find attached the 10/25/17 Meeting Agenda and the 5-yr rolling plan The 2016 LRC Meeting Notes can be viewed at the following links:

February 24, 2016

http://www.pacificorp.com/content/dam/pacificorp/doc/Energy_Sources/Hydro/Hydro_Licensing/Lewis_River/li/lrc/022416_LRC_MN2.pdf

October 26, 2016

http://www.pacificorp.com/content/dam/pacificorp/doc/Energy_Sources/Hydro/Hydro_Licensing/Lewis_River/li/lrc/10262016%20LRC_MN_rev.pdf

→ [Join Skype Meeting](#)

Trouble Joining? [Try Skype Web App](#)

Join by phone

+1 (503) 813-5252 [[Portland, Ore.](#)] (PacifiCorp)

+1 (801) 220-5252 [[Salt Lake City, Utah](#)] (PacifiCorp)

+1 (855) 499-5252 [[Toll Free](#)] (PacifiCorp)

[Find a local number](#)

English (United States)

English (United States)

English (United States)

Conference ID: 2852572

[Forgot your dial-in PIN?](#) [Help](#)

**Lewis River Hydroelectric Projects Settlement Agreement
Lewis River Recreation Coordination Committee (LRC)
Meeting Agenda**

Date & Time: **Wednesday, February 24, 2016
9:30 AM – 11:30 AM**

Place: **Merwin Hydro Control Center
105 Merwin Village Court
Ariel, WA 98603**

Contacts: **Lore Boles: (360) 225-4412
Jessica Kimmick: (503) 813-6945
Kim McCune: (503) 813-6078**

Time	Discussion Item
9:30 AM	Welcome and Introductions ➤ Preview Agenda
9:40 AM	Yale Bridge staircase boater access issue
10:45 AM	Break
11:00 AM	Project Updates ➤ Yale Stair repairs ➤ Saddle Dam Upgrades ➤ Cedar Creek Safety Measures ➤ ADA Fishing Access Site
11:30 AM	Adjourn

Security procedure: Upon arrival at the Merwin Hydro Control Center the gate will be closed and you will be required to use the call-in box on the left side of the gate; please announce who you are and the reason for your visit.

Join by Phone
+1 (503) 813-5252 [Portland, Ore.]
+1 (855) 499-5252 [Toll Free]

Conference ID: 1689150

**FINAL Meeting Notes
Lewis River License Implementation
Lewis River Recreation Committee (LRC) Meeting
February 24, 2016
Merwin Hydro Control Center**

LRC Participants Present (8)

Mariah Stoll-Smith Reese, Lewis River Community
Kim McCune, PacifiCorp
Todd Olson, PacifiCorp
Jessica Kimmick, PacifiCorp
Peggy Miller, WDFW
Nathan Higa, PacifiCorp
Emelie McKain, WDFW
David Howe, WDFW

Assignments from February 24, 2016 meeting	Status
LRC: Yale Bridge staircase boater access - Provide feedback specific to design (usability and safety) and value to boaters.	Complete

Assignments from October 21, 2015 meeting	Status
Kimmick/McCune: Schedule February or March 2016 LRC meeting.	Complete – 2/24/16
Schoenberg: Ask her contacts about retro-fit options for the Yale Bridge stairs and communicate this with Kimmick for PacifiCorp consideration.	Complete

Opening, Review of Agenda and Meeting Notes

Jessica Kimmick (PacifiCorp) called the meeting to order @ 9:45 a.m.

Yale Bridge Staircase Boater Access Update

Consideration of sea kayak rail – Information provided to the Lewis River Recreation Coordination Committee on February 24, 2016.

The recently constructed stairway on the bank of Lake Merwin just upstream of Yale bridge allows access for whitewater kayakers taking out of the Canyon Creek run. While this access is adequate for whitewater kayaks, it has been requested that a design for allowing sea kayaks to be portaged up or down the stairway be examined.

Typical whitewater kayaks are short (less than 8 ft. in length) and made of a flexible but durable plastic material such as roto molded polyethylene. They also tend to be light enough to be carried by a single person, typically by hoisting the cowling over the shoulder. With stairways it is often common to lay the kayak across the stairway on the handrails and push or slide the kayak up or down the stairs. Sea kayaks; however tend to be longer rigid vessels, up to 18 ft. long. While many newer ones are made of plastic, fiberglass and skin over rib construction are still

common. They can also weigh in excess of 100 pounds. Such craft are typically launched from a ramp or shoreline. It is commonly carried by two people, trailer, or by a wheeled dolly.

The stairway is in a narrow and steep cut in the bank alongside the bridge abutment. The stairway has two intermediate landings and a landing with a 90 degree turn at the bottom, ending in a terraced concrete box structure at the bottom. The simple concept to assist sea kayak deployment would be to install a rail slide along the top of one side of the stairway. To prevent people from using it as a slide to ride the craft down, the rail can be made to cant the boat at an angle. For whitewater craft, one holds on to the craft as they walk down the stairs. The length and rigidity of a sea kayak, however, may make the landing transitions awkward. The weight of a sea kayak may also make it precarious to walk down with it. Consideration should be given for an anchor, pulley, or winch at the top of the stairway to allow the sea kayak to be raised or lowered while on the rail. The 90 degree bottom landing also complicates descent. Running it down the right side means the paddler would leave arm distance of the kayak as the 90 degree bend takes them away from the craft, and running it down the left side means a long boat would have to negotiate the inside curve. Some thought would have to be taken to determine a geometry that would work. Rollers or lining may be needed to prevent abrasion damage to the sea kayak, especially those with fiberglass construction.

To aid in visualizing the proposed boat rail, photographs of existing rails are presented below. One is an aluminum chute mounted to a stairway with brackets. The other is built like a park bench, out of structural square tubing with wooden slat rails. The proposed rail for Yale is a set of galvanized tubes lined with wood or uhmw mounted to the existing hand rails or foundation blocks. Design work would be required to determine the best way to attach the rail to the existing stairway.



Bottom Landing of Yale Stairs



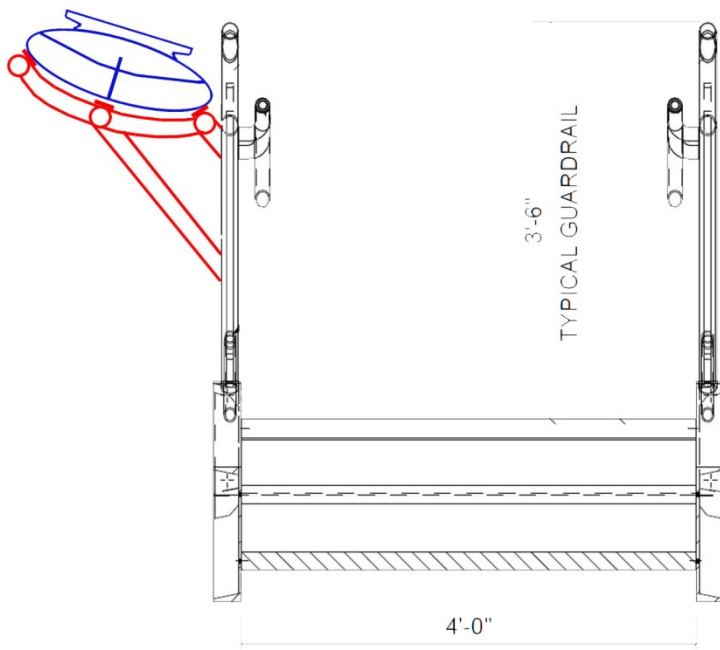
Looking down from the top of the Yale Stairs



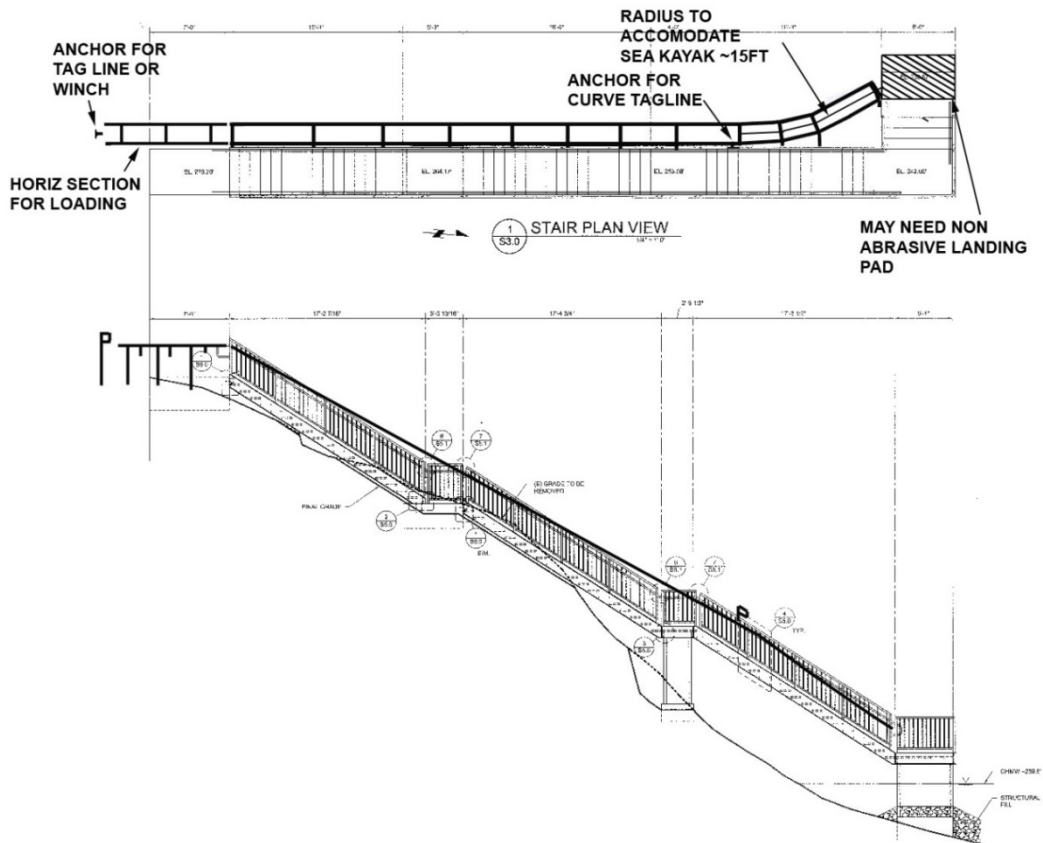
A light duty aluminum kayak rail attached to a dock stairway



A heavy duty structural steel tube boat rail



Cross section of potential kayak rail



Layout of potential kayak rail

Completed Implementation Projects

➤ Yale Bridge non-motorized boat access + planned repairs

PacifiCorp replaced stair treads with heavier weight new tread; grading and bull nose; one man boulders removed and repaired erosion damage. Kimmick provided “after” photos of repairs (see below). No further issues with vandalism have occurred since repairs were completed.



➤ *Saddle Dam Upgrades*

Completed the feasibility study and provided conceptual design to the LRC last October 2015. The engineering phase has begun to further develop designs. Geotechnical testing will take place on February 25, 2016 for the moorage anchors.

➤ *Cedar Creek Boat Ramp Safety Measures*

In November, 2015, safety measures were installed at the Cedar Creek boat ramp. Guide posts and jersey barriers were placed to define where the ramp can be used safely. The boat launch is now more useable and safe until something more permanent can be installed. PacifiCorp is looking to replace the current facility with a new single lane ramp. Given WDFW land ownership of the site, PacifiCorp will be consulting with WDFW prior to developing final design. Current schedule is to complete design and permitting in 2016, with construction in 2017.



Cedar Creek guide posts and jersey barriers



➤ *ADA Fishing Access Feasibility Study*

PacifiCorp has put out a request for proposal to consultants for assistance in conducting a feasibility study to determine the best location to place a new ADA Fishing access on the Lewis River or project reservoirs. Considerations will include, but not limited to, safety of access, topography, geological hazards, traffic, environmental issues, and availability of fish and areas which are not hydrologically dynamic. The LRC commented that the

Yale, Speelyai, Cresap central area is more in keeping of the intent of the Settlement Agreement Parties.

➤ *IP Road Trail Feasibility Study*

PacifiCorp has identified a trailhead location and is working with the Washington Department of Natural Resources (DNR) on a lease agreement to develop the trailhead and associated facilities. Development of permit applications is underway.

Next Scheduled Meeting:

Fall 2016 (Date & Time TBD)
Merwin Hydro Control Center
Ariel, WA

Meeting Handouts & Attachments:

- Agenda from 2/24/16

Meeting adjourned at 11:50am.

**Lewis River Hydroelectric Projects Settlement Agreement
Lewis River Recreation Coordination Committee (LRC)
Meeting Agenda**

Date & Time: **Wednesday October 26, 2016**
 9:30 AM – 11:30 AM

Place: **Merwin Hydro Control Center**
 105 Merwin Village Court
 Ariel, WA 98603

Contacts: **Lore Boles: (360) 225-4412**
 Jessica Kimmick: (503) 813-6945
 Kim McCune: (503) 813-6078

Time	Discussion Item
9:30 AM	Welcome and Introductions <ul style="list-style-type: none">➤ Preview Agenda
9:40 AM	Completed Implementation Projects and 2016 changes <ul style="list-style-type: none">➤ I&E Program: Eagle Cliff and Marble Creek Trail➤ Recreation reservation system policy changes info
10:00 AM	Ongoing Implementation Projects <ul style="list-style-type: none">➤ IP Road Trail Project: update➤ Yale Lake Day Use Facilities: Saddle Dam Park improvements➤ ADA Fishing Access Feasibility Study: update➤ Yale Reservoir ADA Site Improvements
10:45 AM	Break
11:00 AM	Upcoming/Other Projects <ul style="list-style-type: none">➤ Maintenance Project: Cedar Creek Boat Launch: update and schedule➤ Lewis River Buoy and Swim Boom➤ Lewis River Park Kiosk Replacement
11:30 AM	Adjourn

Security procedure: Upon arrival at the Merwin Hydro Control Center the gate may be closed and you will be required to use the call-in box on the left side of the gate; please announce yourself and the reason for your visit.

.....

Join by Phone

+1 (503) 813-5252 [Portland, Ore.]
+1 (801) 220-5252 [Salt Lake City, Utah]
+1 (855) 499-5252 [Toll Free]

FINAL Meeting Notes
Lewis River License Implementation
Lewis River Recreation Committee (LRC) Meeting
October 26, 2016
Merwin Hydro Control Center

LRC Participants Present (4)

Kim McCune, PacifiCorp (via conference)
Jessica Kimmick, PacifiCorp
Peggy Miller, WDFW
Al Thomas, Columbian

Assignments from October 26, 2016 meeting	Status
Kimick: Research ADA regulations specifically relating to rules around how a non-disabled person must use the LR Hatchery ADA Fishing platform i.e. 100' away from an ADA accessible site.	Complete

Opening, Review of Agenda and Meeting Notes

Jessica Kimmick (PacifiCorp) called the meeting to order @ 9:30 a.m.

Completed Implementation Projects and 2016 Changes

➤ *I&E Program*

The recreation committee was informed that the signs for both the Eagle Cliff acclimation ponds and Marble Creek trail at Merwin Park have both been fabricated and delivered. The Marble Creek trail signs have been installed. They are a trailhead sign and an interpretive sign approx. 1/3 of the way in the trail about the Merwin Dam. The Eagle Cliff signs are currently in PacifiCorp's possession. PacifiCorp is waiting for the conclusion of the decisions about the acclimation ponds prior to installation. They may need to be sent back to the manufacturer to have an alternate I&E information printed on them.

Discussion re: Eagle Cliff: The recreation committee and the Settlement Agreement parties were informed that plans for a trail along the North Fork of the Lewis River heading upstream from Eagle Cliff Park to the Gifford Pinchot National Forest boundary will not move forward. Several years ago, the U.S. Fish and Wildlife Service opposed the proposed trail because it would provide easy fishing access to habitat in the North Fork of the Lewis River heavily used by bull trout, a threatened species. PacifiCorp will be submitting a formal License Amendment to the Federal Energy Regulatory commission. PacifiCorp was asked how far the trail was supposed to go: action item for PacifiCorp to provide that information.

➤ *Recreation Reservation System Policy Changes*

The new recreation reservation system launch which included the option of making reservations 9-months in advance is working really well. Great feedback was received from customers. It was necessary to modify the cancellation fees to deter users from reserving large blocks of time that they did not intend to use. All customers that made a reservation up until February 2, 2016 were made aware of the policy change/increase in cancellations fees and provided a 2-week grace period to modify and/or update their reservations.

➤ *Yale Stairs*

PacifiCorp met with the LRC, external stakeholders and interested parties to address ADA access at Yale stairs. PacifiCorp conducted a thorough investigation, reviewed multiple alternative locations for the access point and conducted a thorough engineering review. The topography at the Yale Nonmotorized Boat Access stair project is approximately 90% average slope. PacifiCorp determined that they are in compliance with both Clark County Building Codes and Clark County Accessibility requirements, and ADA access is not feasible at this location.

When asked if there have been any further vandalism issues, Kimmick also informed the LRC attendees that PacifiCorp removed the one-man boulders on the adjacent slope, seeded and applied jute mat for alternate erosion control, placed additional boulders to deter vehicular access, and replaced the damaged stair treads with heavier weight treads.

Ongoing Implementation Projects

➤ *IP Road Trail Project: update*

PacifiCorp's property department is working with the state Department of Natural Resources on a lease agreement for the trailhead location. A land-use lease for the trailhead can take a year or more to acquire from DNR. PacifiCorp has actual momentum going on now for this project and we are working and negotiating with the neighboring land owner (DNR), who has its own concerns. It's definitely a partnership. PacifiCorp envisions families with children on tricycles, or local residents walking their dogs, or folks out for an early morning jog. It's a great trail opportunity for folks of all ages and abilities. PacifiCorp is moving forward and are pretty excited. Undersized culverts on the road have been replaced. A fence is planned along with benches and picnic tables at the downstream terminus of the trail. PacifiCorp will try to discourage people from going any farther for general safety reasons. There's no timetable for construction or completion of the trail.

➤ *Yale Lake Day Use Facilities: Saddle Dam Park improvements*

- Engineer design phase is complete.
- PacifiCorp is working on securing all needed permits.
- On track for construction Fall 2017.
- A group picnic shelter, including off-shore boat anchors in Yale Reservoir, with construction in the fall of 2017. The shelter will make the park more usable during rain or very hot weather.
- In addition to these new amenities, ADA access will be provided to the boat dock and into the picnic area, ensuring a recreation use for all.
- The new facilities will be ready when the park opens in May 2018 for the summer.

➤ *ADA Fishing Access Feasibility Study: update*

PacifiCorp consulted with the LRC in June 2016 (**Attachment A**) but after further review and comments PacifiCorp implemented revisions to address environmental constraints, public safety concerns, better fishing potential and no structures in the reservoir. A new site plan and conceptual design was provided to the LRC October 25, 2016 for a 14-day review period. Comments are due on or before November 9, 2016. In addition, road access will be improved as well.

Miller requested PacifiCorp look into ADA regulations specifically relating to rules around how a non-disabled person must use the area for fishing i.e. at a minimum distance of 100' away from an ADA accessible site.

➤ *Yale Reservoir ADA Site Improvements*

PacifiCorp submitted a cost bid request to suitable contractors for a quote to complete the ADA site improvements for Beaver Bay and Cougar Park. Barrier –free camp sites will be designated at Cougar and Beaver Bay parks along Yale Reservoir. The boarding float at Cougar Camp boat ramp also will be replaced and made usable for boaters with disabilities.

- Minor earth grading for slope requirements
- Beaver Bay informational kiosk accessibility modifications
- New picnic tables and fire rings

PacifiCorp will conduct an on-site meeting Friday, October 28th with one of the contractors that is bidding. Update: meeting was rescheduled to Friday Nov. 4, 2016.

The goal is to complete the upgrades by Spring 2017.

Upcoming/Other Projects

➤ *Maintenance Project: Cedar Creek Boat Launch: update and schedule*

- PacifiCorp is moving ahead with the repair of Cedar Creek Boat Launch. The completion schedule is dependent on WDFW obtaining an aquatic land lease from Washington Dept. of Natural Resources (DNR). PacifiCorp is hopeful for a construction start and finish in 2018 but realistically 2019 is more likely due to permitting time requirements. The boat launch will close for a time during construction for public safety.

➤ *Lewis River No-wake Buoy and Swim Boom*

- PacifiCorp is replacing all existing reservoir buoys and adding new anchor system.
- Completion is expected by December 31, 2016.

➤ *Lewis River Park Kiosk Replacement*

- Expected completion is December 31, 2016.
- Replacing all informational signs with new and updated informational kiosks.

Next Scheduled Meeting:

Fall 2017 (Date & Time TBD)
Merwin Hydro Control Center
Ariel, WA

Meeting Handouts & Attachments:

- Agenda from 10/26/16
- **Attachment A** - Lewis River ADA Fishing Site Feasibility Study Access site/Platform Proposed Location and Conceptual Design, October 25, 2016

Meeting adjourned at 11:00a.m.

McCune, Kimberly

From: McCune, Kimberly
Sent: Tuesday, October 25, 2016 9:49 AM
To: Peggy Miller; emelie.mckain@dfw.wa.gov; David Howe; Mariah Stoll-Smith Reese; James H Malinowski; Amanda Froberg; 'Deb Schoenberg'; HML LRN (Bjerke, Bill); 'Jeremy Kanooth'; Noel Johnson; Olson, Todd; 'leslie.connelly@rco.wa.gov'
Cc: Kimmick, Jessica; Kahut, Michael
Subject: ACTION REQUESTED: Lewis River ADA Fishing Site Feasibility Study; 14-day Review and Comment Period
Attachments: LR ADA Fishing Access (2).pdf
Importance: High
Follow Up Flag: Follow up
Flag Status: Flagged

Lewis River Recreation Committee (LRC):

Following initial consultation with the LRC regarding siting the ADA Accessible Fishing Access site, PacifiCorp engaged with a consultant to investigate various sites on the Lewis River to construct the facility. The site chosen for the initial concept was a fishing platform located at Speelyai Park.

This site met the intent of the requirement, however, several concerns were expressed regarding the site. They were:

- Public safety concerns with visitors diving off the platform into shallow water,
- Site improvements require placing concrete and piling in the reservoir, and
- The poor fishing potential of the site.

During subsequent consultations, WDFW suggested locating the access below Merwin on the river behind the Lewis River Hatchery. The advantages to this site are:

- No platform will be constructed which avoids the safety concern,
- No structures will be constructed in the river, and
- The site has excellent potential for catching trout and salmon.

Following discussions with WDFW hatchery personnel, who agreed with constructing the site at that location, PacifiCorp developed a site plan for review by the Committee (see attached).

We ask that you provide your comments to PacifiCorp **on or before Wednesday, November 9, 2016** to my attention at kimberly.mccune@pacificorp.com.

Please note that once available, we will provide you with a copy of the conceptual design that will be included in our report to the FERC by the end of this year.

Thank you.

Kimberly McCune
Sr. Business Administrator

PacifiCorp – Hydro Resources
825 NE Multnomah St., Suite 1500
Portland, OR 97232
Ph: (503) 813-6078

From: McCune, Kimberly

Sent: Friday, June 17, 2016 4:22 PM

To: 'Deb Schoenberg'; Diana MacDonald; HML LRN (Bjerke, Bill); James H Malinowski; 'Jeremy Kanooth'; Jim Eychaner; Mariah Stoll-Smith Reese; Noel Johnson; Olson, Todd; Peggy Miller

Cc: Kimmick, Jessica

Subject: RE: ACTION REQUESTED: Lewis River ADA Fishing Site Feasibility Study; 30-day Review and Comment Period

Lewis River Recreation Committee:

Please be advised that the *Lewis River ADA Fishing Site Feasibility Study* is now available on the Lewis River website for a 30-day review and comment period. I have provided the link below for your convenience.

A preliminary construction schedule will be included in our filing to the FERC to reflect our intent to construct in the 4th quarter of 2018. Comments provided to us will also be included in the FERC filing. Please pay particular attention to the identified preferred site for the ADA bank fishing structure (page 12 and Appendix 3), the conceptual designs provided, and let us know how you feel the findings of the feasibility study fulfill the needs of the ADA community we are serving.

http://www.pacificorp.com/content/dam/pacificorp/doc/Energy_Sources/Hydro/Hydro_Licensing/Lewis_River/li/lrc/LR_ADA_SiteFeas_LRC.pdf

Article 407. Barrier-free Bank Fishing Access Plan. Within 8 years of license issuance, the licensee shall file with the Commission for approval, a plan to construct one barrier-free bank fishing access site within the Swift No. 1, Yale, or Merwin Project boundary, as outlined in section 11.2.14 of the Settlement Agreement (Agreement) filed on December 3, 2004. The plan shall include the results of a feasibility study to identify the most feasible location to construct the facility, detailed design drawings, and a schedule to construct the facility. The plan shall specify the specific project the site would become a part of, and the licensee that would administer the site. Upon Commission approval, the licensee will be required to file revised Exhibit G drawings incorporating the facility within the appropriate project boundary.

The access plan shall be developed after consultation with Lewis River Advisory Committee (as defined in section 11.2.16 of the Agreement). The licensee shall include with the plan documentation of consultation, copies of comments and recommendations on the completed plan after it has been prepared and provided to the entities above, and specific descriptions of how the entities' comments are accommodated by the plan. The licensee shall allow a minimum of 30 days for the entities to comment and to make recommendations before filing the plan with the Commission. If the licensee does not adopt a recommendation, the filing shall include the licensee's reasons, based on project-specific reasons.....

We ask that you provide your comments to PacifiCorp **on or before Friday July 22, 2016** to my attention at kimberly.mccune@pacificorp.com

Thank you.

Kimberly McCune
Sr. Business Administrator

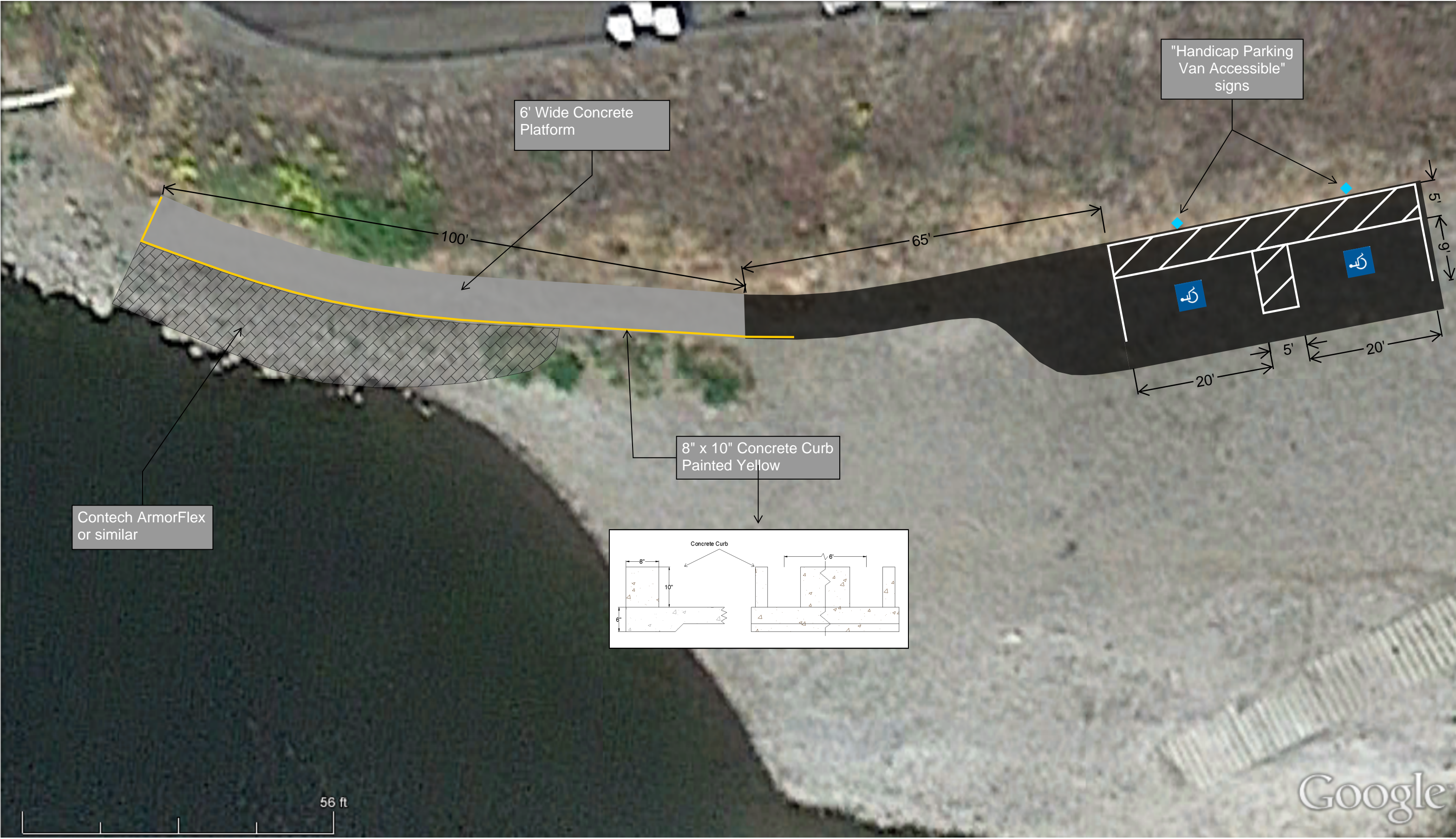


Lewis River: ADA Fishing Platform

Proposed Location and
Conceptual Design

- Asphalt
- Concrete
- Concrete Curb
- Modified Armoring





Lewis River: ADA Fishing Platform

Proposed Location and Conceptual Design

- Asphalt
- Concrete
- Concrete Curb
- Modified Armoring





**Capital Improvements
LRC Meeting
Oct. 25, 2017**



Completed Implementation Projects

ADA Park Improvements: Yale



Completed Implementation Projects



Lewis River Buoys and Booms



Completed Implementation Projects



Park Kiosk Replacement