

**Lewis River Hydroelectric Projects Settlement Agreement  
Terrestrial Coordination Committee (TCC)  
Meeting Agenda**

**Date & Time:** Thursday, March 21, 2013  
9:00 a.m. – 12:00 p.m.

**Place:** Woodland Police Dept. (Council Chambers)  
100 Davidson Avenue  
Woodland, WA

**Contacts:** Kirk Naylor: (503) 813-6619; cell (503) 866-8750

Time	Discussion Item
9:00 a.m.	Welcome <ul style="list-style-type: none"> <li>➤ Review Agenda &amp; 2/12/13 Meeting Notes</li> <li>➤ Comment &amp; accept Agenda &amp; 2/12/13 Meeting Notes</li> </ul>
9:15 a.m.	ACC/TCC 2012 Draft Annual Report
9:45 a.m.	PacifiCorp WHMP 2012 Report and 2013 Plan
<b>10:30 a.m.</b>	<b>Break</b>
10:45 a.m.	I-5 Corridor Reinforcement Project Update
11:00 a.m.	Old Growth Connectivity
11:30 a.m.	Hamm Meadow Update
11:45 a.m.	<ul style="list-style-type: none"> <li>➤ Next Meeting's Agenda</li> <li>➤ Public Comment Opportunity</li> </ul> Note: all meeting notes and the meeting schedule can be located at: <a href="http://www.pacificorp.com/es/hydro.html">http://www.pacificorp.com/es/hydro.html</a>
12:00 p.m.	<i>Adjourn</i>

Join by Phone  
+1 (503) 813-5252 [Portland, Ore.]  
+1 (855) 499-5252 [Toll Free]

**Conference ID: 4641794**

**FINAL Meeting Notes**  
**Lewis River License Implementation**  
**Terrestrial Coordination Committee (TCC) Meeting**  
**March 21, 2013**  
**Woodland Police Dept. (Council Chambers)**

**TCC Participants Present: (9)**

Bob Nelson, RMEF  
Ray Crosswell, RMEF  
Peggy Miller, WDFW  
Eric Holman, WDFW  
Kirk Naylor, PacifiCorp Energy  
Kimberly McCune, PacifiCorp Energy  
Kendel Emmerson, PacifiCorp Energy  
Diana Gritten-MacDonald, Cowlitz PUD  
Mitch Wainwright, USDA Forest Service

**Calendar:**

Tuesday – April 9, 2013	TCC Meeting	HCC
Wednesday – May 8, 2013	TCC Meeting	HCC

<b>Assignments from March 21, 2013</b>	<b>Status</b>
McCune: Modify April meeting date to 4/9/13 and change location to Woodland Police Department (council chambers).	<b>Complete</b> <b>3/21/13</b>

<b>Assignments from January 9, 2013</b>	<b>Status</b>
Gritten-MacDonald: Investigate an inter-local agreement with Skamania County for 2013 weed control.	<b>Pending as of</b> <b>3/21/13</b>

<b>Assignments from December 12, 2012</b>	<b>Status</b>
Peggy Miller/Eric Holman: Research WDFW process for changing hunting regulations (Hamm Meadow Issues). Discuss at the January 2013 TCC meeting.	<b>Complete</b>

<b>Assignments from June 13, 2012</b>	<b>Status</b>
Naylor: Review the SA/WHMP budget(s) as well as determine status and opportunity for coordination with John Cook (NCASI) and Lisa Shipley (Washington State University) doing the blacktail study and report back to the TCC.	<b>In Progress</b>

<b>Parking lot items from April 13, 2011 Meeting</b>	<b>Status</b>
Naylor: Provide TCC with Riparian Management Plan for review.	<b>Pending</b>

<b>Parking lot items from December 12, 2012 Meeting</b>	<b>Status</b>
PacifiCorp: Work with TCC to proceed with second RMEF/PAC Project Proposal.	<b>Pending</b>

<b>Parking lot items from February 12, 2013 Meeting</b>	<b>Status</b>
Cowlitz PUD: Schedule a field tour of the Devil's Backbone management unit	<b>Pending for summer 2013</b>

### **Review of Agenda and Finalize Meeting Notes**

Kirk Naylor (PacifiCorp Energy) called the meeting to order at 9:15 a.m. Naylor reviewed the agenda and asked the TCC if there were any changes/additions. Diana Gritten-MacDonald (Cowlitz PUD) would like to add a Cowlitz PUD Wildlife Habitat Management Plan (WHMP) 2013 update.

Naylor reviewed the February 12, 2013 meeting notes and assignments. No changes were requested. The meeting notes were approved at 9:20 am.

### **ACC/TCC 2012 Draft Annual Report**

Kim McCune (PacifiCorp Energy) reminded the TCC attendees that the ACC/TCC 2012 Draft Annual Report was submitted for its 30-day review and comment period on March 5, 2013. All comments, if any, are due on or before April 5, 2013.

### **PacifiCorp WHMP 2012 Annual Report**

Kendel Emmerson (PacifiCorp Energy) and Naylor provided a cursory review of PacifiCorp's WHMP 2012 Annual Report which was emailed to the TCC for its 30-day review and comment period on March 5, 2013. The document can be viewed at the link provided below. All comments, if any, are due on or before April 5, 2013.

[http://www.pacificorp.com/content/dam/pacificorp/doc/Energy\\_Sources/Hydro/Hydro\\_Licensing/Lewis\\_River/2012Annual%20Report\(draft\\_2.22.13\).pdf](http://www.pacificorp.com/content/dam/pacificorp/doc/Energy_Sources/Hydro/Hydro_Licensing/Lewis_River/2012Annual%20Report(draft_2.22.13).pdf)

<Break 11:15am>

<Reconvene 11:30am>

### **PacifiCorp WHMP 2013 Annual Plan**

Emmerson and Naylor provided a cursory review of PacifiCorp's WHMP 2013 Annual Plan which was emailed to the TCC for its 30-day review and comment period on March 5, 2013. The document can be viewed at the link provided below. All comments, if any, are due on or before April 5, 2013.

[http://www.pacificorp.com/content/dam/pacificorp/doc/Energy\\_Sources/Hydro/Hydro\\_Licensing/Lewis\\_River/2013AnnualPlanDraftWHMP.pdf](http://www.pacificorp.com/content/dam/pacificorp/doc/Energy_Sources/Hydro/Hydro_Licensing/Lewis_River/2013AnnualPlanDraftWHMP.pdf)

Emmerson also briefly reviewed the overall 2013 budget compared with the 2012 funds (details provided below):

## Overall 2013 Budget

License Year 5  
Calendar Year 2013  
Annual WHMP Budget

Total Available Funds		2012 Funds	2013 Funds
Fee Simple Lands	Acres	11,105	13,134
	Cost Per Acre	\$32.47	\$33.18
	SubTotal	\$360,611.00	\$435,792.62
Interests in Lands	Acres	16	16
	Cost Per Acre	\$16.24	\$16.59
	SubTotal	\$259.78	\$265.44
Other Additional Funds	Remaining Funds from 2012	\$33,093.31	\$1,724.60
	Additional HEP Funding	\$0.00	\$0.00
	Interest	\$2,000.00	\$12,323.19
	SubTotal	\$35,093.31	\$14,047.79
<b>Total</b>		<b>\$395,964.09</b>	<b>\$450,105.85</b>

Budget			
WHMP Management Area or Plan-Wide Goal	2012 Budget		Proposed 2013
	Proposed	Actual	
Administration	Cost	\$30,500.00	\$31,454.60
	Percent of Budget	6.78%	6.99%
Old-Growth	Cost	\$11,250.00	\$5,728.90
	Percent of Budget	2.50%	1.27%
Wetlands	Cost	\$15,075.00	\$5,097.23
	Percent of Budget	3.35%	1.13%
Riparian	Cost	\$13,725.00	\$2,312.19
	Percent of Budget	3.05%	0.51%
Shrubland	Cost	\$2,250.00	\$7,531.07
	Percent of Budget	0.50%	1.67%
Farmland, Meadow, Idle Areas	Cost	\$50,010.00	\$50,733.99
	Percent of Budget	11.11%	11.27%
Orchard	Cost	\$14,150.00	\$16,363.32
	Percent of Budget	3.14%	3.64%
Transmission Line Right-of-Way	Cost	\$24,150.00	\$17,782.79
	Percent of Budget	5.37%	3.95%
Unique Area/Habitat	Cost	\$9,900.00	\$5,144.47
	Percent of Budget	2.20%	1.14%
Forestland	Cost	\$150,400.00	\$166,103.38
	Percent of Budget	33.41%	36.90%
Invasive Plant Species	Cost	\$18,475.00	\$18,773.87
	Percent of Budget	4.10%	4.17%
Raptor	Cost	\$41,900.00	\$53,837.81
	Percent of Budget	9.31%	11.96%
Public Access Management	Cost	\$11,150.00	\$11,116.09
	Percent of Budget	2.48%	2.47%
Monitoring	Cost	\$3,000.00	\$0.00
	Percent of Budget	0.67%	0.00%
<b>Total Cost</b>		<b>\$395,935.00</b>	<b>\$391,979.71</b>
<b>Total Percent of Budget Spent</b>		<b>99.99%</b>	<b>99.99%</b>
<b>Remaining Funds</b>		<b>\$29.09</b>	<b>\$3,984.38</b>

Emmerson informed the TCC attendees that at this time PacifiCorp does not have a farmer under contract but they are working on securing these services for 2013. Depending on when a farming

contract can be completed, some of the actions in the manual plan may need to be deferred (e.g. spring mowing and Buncome Hollow meadow clearing and grass seeding).

During the review of the Raptor chapter Erik Holman (WDFW) specifically asked Naylor and Emmerson if during their bald eagle flights next month to please keep an eye out for golden eagles and advise if any sightings.

### **Bonneville Power Administration – I5 Corridor Reinforcement Transmission Project**

McCune informed the TCC attendees that PacifiCorp submitted its response to BPAs Draft Environmental Impact Statement (DEIS) on March 20 2013. The letters to BPA and the U.S. Army Corps of Engineers can be viewed on the Lewis River website at the following location:

<http://www.pacificorp.com/es/hydro/hl/lr.html#> >BPA I-5 Transmission Reinforcement Project

### **Old Growth Connectivity**

Emmerson provided a cursory review of the *Lewis River Wildlife Habitat Management Plan Old-Growth Management (Objective D) Memorandum*, dated December 21, 2012 (**Attachment A**), which was emailed to the TCC on February 26, 2013. The TCC was provided hard copies of the document and asked to review and provide any comments, questions/concerns on or before Tuesday, April 9, 2013.

Emmerson informed the TCC attendees that she developed a GIS model that essentially identified all of the old-growth and the mature stands that are greater than 1.0 acre in size and on WHMP lands.

The mature stands were then scored based on criteria for size, proximity to old-growth, spotted owl habitat connectivity, and within a protected raptor habitat and/or riparian buffer. The table in the document lists the criteria and its associated scores (for further details see **Attachment A**).

### **Hamm Meadow Update**

Naylor informed the TCC attendees that a private property owner contacted PacifiCorp the week of March 18, 2013 and reported hunters requesting access to Hamm Meadow in the month of March. PacifiCorp contacted local law enforcement on the property owner's behalf. The property owner informed the hunters that they were on private property and were asked to leave. Naylor further encouraged the property owner to post more signs on the access road to their property.

### **Cowlitz PUD WHMP 2013 Plan**

Diana Gritten-MacDonald informed the TCC attendees that the comment period ended on March 8, 2013 but provided an additional opportunity and asked if any questions or comments from the TCC. None were provided so she will be filing the document with the FERC on or before April 30, 2013.

### **Public Comment Opportunity**

No public comment was provided.

<12:35 p.m. meeting adjourned>

**Agenda items for April 9, 2013**

- Review March 21, 2013 Meeting Notes
- Review Old-Growth Connectivity Memo edits or comments
- I-5 Corridor Reinforcement Project Update
- Tour timber harvest areas (Units 4, 15 & 20)
- Tour BPA crossing

**Next Scheduled Meetings**

April 9, 2013	May 8, 2013
TCC Meeting	TCC Meeting
Merwin Hydro Control Center	Merwin Hydro Control Center
Ariel, WA	Ariel, WA
9:00am – 3:00pm	9:00am – 3:00pm

**Attachments:**

- March 21, 2013 Meeting Agenda
- February 12, 2013 Meeting Notes
- **Attachment A** – Lewis River Wildlife Habitat Management Plan Old-Growth Management (Objective D), dated December 21, 2012

## MEMORANDUM

---

**DATE:** December 21, 2012

**TO:** Terrestrial Coordination Committee

**FROM:** Kendel Emmerson, PacifiCorp Energy Wildlife Biologist

**SUBJECT:** Lewis River Wildlife Habitat Management Plan Old-Growth Management  
Objective D Old-Growth Connectivity

---

The 2008 Lewis River Wildlife Habitat Management Plan (WHMP) Old-growth Management Habitat Management section overall goal is to “promote the development, maintenance, and connectivity of old-growth coniferous forest and/or associated habitat components”. This goal is achieved by implementing a variety of objectives; in particular Objective c, d, and e promote connectivity. This memo describes the strategy meeting Objective d which reads as follows:

Objective d: Within 5 years of Lewis River WHMP implementation, identify and evaluate specific mature conifer stands or other areas that could improve habitat connectivity between old-growth stands or increase number or size of old-growth patches, and develop a schedule to manage/protect these areas as appropriate. Complete the identification/evaluation process within 5 years of the acquisition of Interests in Land.

Section 4.5.3 of the WHMP Old-growth Habitat Management Chapter described how Objective D will be achieved

Existing mature conifer stands (i.e., mature stands identified in the maps in PacifiCorp and Cowlitz PUD [2004a]) will also be assessed to determine the existing or potential connectivity to old-growth stands within 5 years of Lewis River WHMP implementation. Newly acquired mature conifer stands will be assessed within 5 years of acquiring the land.

Mature stands that are a priority to old-growth connectivity will include stands that are adjacent to and/or connected by forested buffers to old-growth stands. These priority mature stands will be evaluated in the field to determine if any management activities are required to develop old-growth habitat characteristics within the stand (i.e., snag development, thinning, and large woody debris development). Evaluations and management recommendations will be

documented and discussed with the TCC. Evaluations will follow the same procedures and use the same evaluation forms as used for the old-growth evaluations. The result of these stand evaluations will provide recommended management actions and will identify mature stands that may be developed into old-growth during the life of the licenses.

In order to identify the priority mature stands (i.e., a stand that is a priority to old-growth habitat connectivity) a GIS model was developed that essentially identified all of the old-growth (OG) and the mature (M and M-t) stands that are greater than 1.0 acre in size and on WHMP lands.

The mature stands were then scored based on criteria for size, proximity to old-growth, spotted owl habitat rating, and designated raptor and/or riparian habitat buffer. The following table lists the criteria and its applicable points.

**Table 1: Mature Stand as Old-Growth Connectivity Criteria and Points**

Criteria	Description	Points
Size	The stand is $\geq 10$ acres	3
	The stand is between $\geq 5$ and $\leq 9.99$ acres	2
	The stand is between $\geq 1$ and $\leq 4.99$ acres	1
Old-Growth Proximity	The stand is adjacent (i.e., $\leq 1,000$ ft.) to an old-growth stand on WHMP or USFS lands or within the SOSEA	3
	The stand is $\geq 1000$ ft. and $\leq 0.25$ miles from old-growth stand on WHMP or USFS lands or within the SOSEA	2
	The stand is $\geq 0.25$ and $\leq 0.5$ miles from old-growth stand on WHMP or USFS lands or within the SOSEA	1
Spotted Owl Habitat	Any portion of the stand is within Raptor Management Objective J lands (i.e., these are lands within the Siouxon SOSEA)	3
	Any portion of the stand that is within Raptor Management Objective I lands (i.e., These are lands, that unless separated by a reservoir, are within 2.0 miles of the Siouxon SOSEA)	2
	Any portion of the stand that is within Raptor Management Objective H lands (i.e., These are lands, that unless separated by a reservoir, are within a spotted owl circle and greater than 2.0 miles of the Siouxon SOSEA)	1
Protected Raptor Habitat	Any portion of the stand that is within a raptor nest buffer	2
	Any portion of the stand that is within a raptor roost buffer	1
Riparian Buffer	Any portion of the stand that is within the Cougar/Panamaker Conservation Covenant	3
	Any portion of the stand that is within a Fish or Non-fish Perennial stream or shoreline buffer.	2
	The stands only applicable buffer(s) is a non-fish seasonal or other stream buffer.	1

Only one point category for size, old-growth proximity, and spotted owl habitat can be applied to a mature stand, whereas a stand can have multiple points applied for Protected



Raptor Habitat (e.g. a stand within a raptor nest and roost buffer would receive a score of 3). Only the highest riparian buffer score was applied to stand that are within multiple riparian buffers (e.g. stand with 1 fish bearing streams and 2 non-fish bearing streams receives a score of 2). For example the highest score that could be obtained for a mature stand on WHMP lands would be 15 points= 3 points for being greater than 10 acres in size, 3 points for adjacent to an old-growth stand, 3 points for being within the Siouxon SOSEA, 3 points for being within a raptor nest and a raptor roost buffer, and 3 points for being in a Cougar/Panamaker Conservation Covenant. Conversely the lowest score a stand could obtain would be 1 point for a stand that is between  $\geq 1$  and  $\leq 4.99$  acres in size and meets no other criteria. The following table is a breakdown of the mature stand scores and a comparison in acres, size range, and average size.

**Table 2: Mature Stand Scores and Total, Average, and Range Size Comparison**

Score	Number of Stands	Total acres	Average Size	Size Range
1	8	14.40	1.80	1.05-3.34
2	5	21.49	4.29	1.29-8.67
3	17	46.50	2.74	1.00-4.16
4	13	76.40	5.88	1.13-21.69
5	20	147.56	7.38	1.56-25.09
6	18	113.30	6.29	1.53-33.88
7	15	136.43	9.10	1.86-30.28
8	8	101.38	12.67	4.46-44.86
9	6	66.84	11.14	1.68-19.85
10	2	13.12	6.56	5.32-7.80
11	0	0	0	0
12	0	0	0	0
13	3	46.37	15.45	10.36-22.80
<b>Total</b>	<b>115</b>	<b>782.77</b>	<b>6.41</b>	<b>1.00-44.86</b>

A priority ranking was assigned to all mature stands that scored an 8 or better. This included 19 stands for a total of 227.71 acres or 29% of the stands. Any stand that scored less than 8 was considered non-priority to old-growth connectivity. These stands totaled 556.06 acres or 71% of the total mature stand acres.

The following maps show the priority vs. non-priority mature stands in relation to old-growth stands, riparian buffer, raptor nest and roosts. Each stand is labeled with its unique 6 digit number known as Asset ID and its associated score. There is also an associated table that is sorted by Asset ID that shows the score for each criterion to see how the polygon ranking was determined.

Mature stands were originally identified during the vegetation cover typing conducted for relicensing. These stands were identified using largely aerial imagery interpretation based on the following description:

Greater than 70% of canopy coverage is comprised of conifer. Average stand diameter 21 to 26 inches at breast height. Canopy structure has a relatively uniform vertical and horizontal texture.

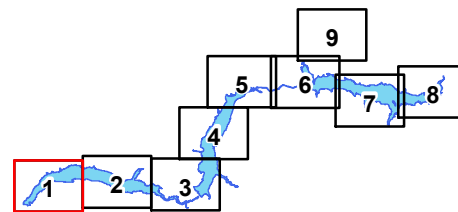
Because diameter at breast height is the most definitive characteristic for mature stands, but the least accurate to determine with aerial imagery, it is likely that many stands may not meet the mature stand criteria. The stands identified as a priority (scored  $\geq 8$ ) will be field verified to ensure that they meet the mature stand definition for mature cover. Several areas have been field verified and corrected since receiving the license as part of the old-growth inventory or cover type correcting for timber harvest management units. The following table has every stand identified as priority and whether or not it has been field verified.

<b>Asset ID</b>	<b>Score</b>	<b>Acres</b>	<b>Unit</b>	<b>Field Verified</b>
152138	10	5.32	31-14	Yes
152183	8	15.02	31-9	No
152332	9	8.12	31-1	Yes
152684	13	10.36	23	No
152806	13	13.21	23	No
153638	9	9.01	21	No
153749	8	4.46	30	No
153903	13	22.80	23	No
154100	8	44.86	17	Yes
154301	8	8.16	11	Yes
154305	8	7.97	11	Yes
155662	9	15.28	5	Yes
156159	8	9.92	15	Yes
156170	8	6.43	15	Yes
156215	9	19.85	16	Yes
156227	9	12.91	16	Yes
158629	9	1.68	22	Yes
158631	8	4.55	22	Yes
158633	10	7.80	22	Yes

Future management in these stands will need to be determined, but is limited to snag creation and thinning only if the average stands diameter remains between 21 and 26" dbh and canopy cover remains above 70 percent.

# Lewis River Mature Stand Connectivity

Sheet 1



Mature Stands are labelled with the total score and the Asset ID.

## Legend

- Priority Mature Stand
- Non-priority Mature Stand
- Road
- Stream
- Stream Buffer
- Raptor Nest Buffer
- Raptor Roost Buffer
- Spotted Owl Area
- Old Growth
- Cougar Creek Conservation Covenant
- Siouxon SOSEA
- Siouxon SOSEA Buffer
- Management Unit
- Water Body



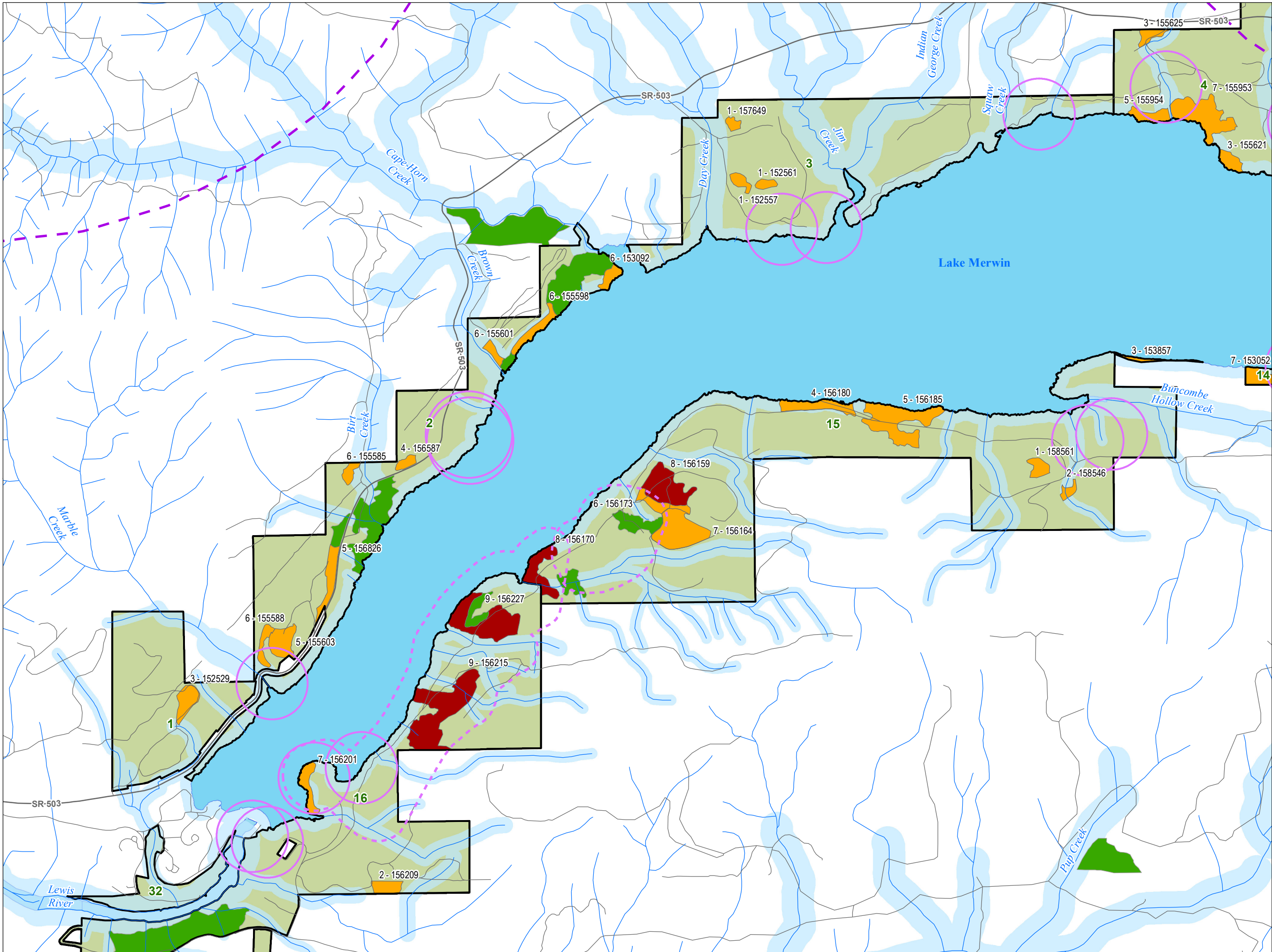
1:20,000



GIS Support Services  
Solutions Group  
gisdept@PacifiCorp.com

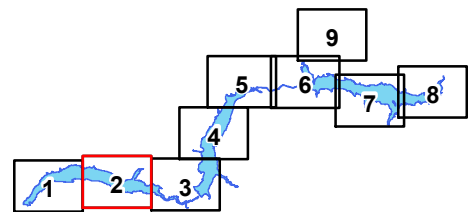
Data is projected in UTM Zone 10, NAD83, meters.

No Warranty. With respect to any information, including but not limited to the Confidential Information, which a Party furnishes or otherwise discloses to another Party for the purpose of evaluating Compliance, it is understood and agreed that the Disclosing Party does not make any representations or warranties as to the accuracy, completeness or fitness for a particular purpose thereof. It is further understood and agreed that no Party or its Representatives shall have any liability or responsibility to another Party or to any other person or entity resulting from the use of any information so furnished or otherwise provided pursuant to this Agreement.



# Lewis River Mature Stand Connectivity

Sheet 2



Mature Stands are labelled with the total score and the Asset ID.

## Legend

- Priority Mature Stand
- Non-priority Mature Stand
- Road
- Stream
- Stream Buffer
- Raptor Nest Buffer
- Raptor Roost Buffer
- Spotted Owl Area
- Old Growth
- Cougar Creek Conservation Covenant
- Siouxe SOSEA
- Siouxe SOSEA Buffer
- Management Unit
- Water Body



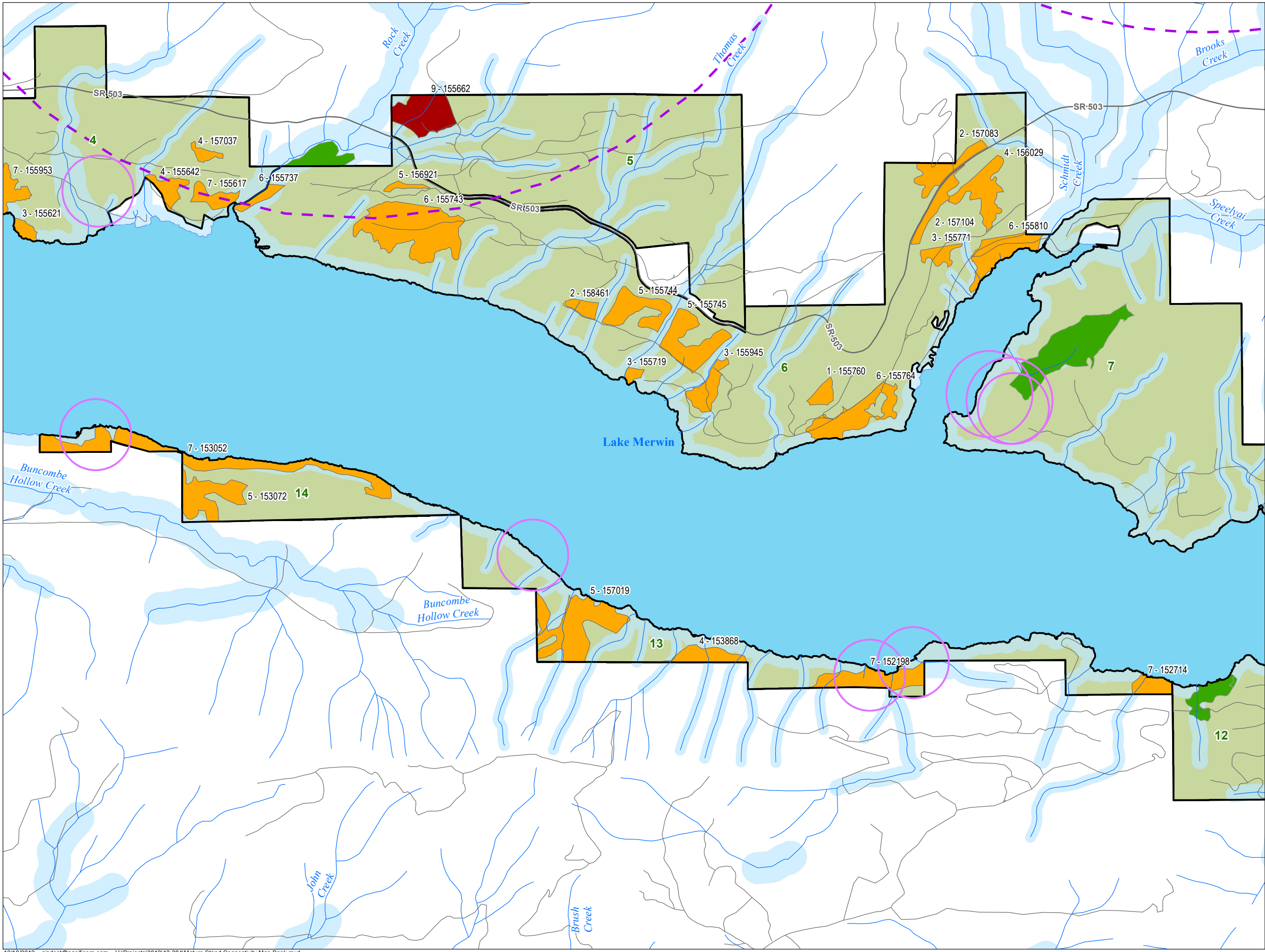
1:20,000



GIS Support Services  
Solutions Group  
gisdept@PacifiCorp.com

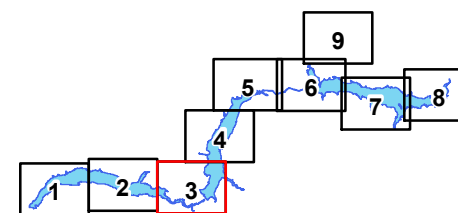
Data is projected in UTM Zone 10, NAD83, meters.

No Warranty. With respect to any information, including but not limited to the Confidential Information, which a Party furnishes or otherwise discloses to another Party for the purpose of evaluating Compliance, it is understood and agreed that the Disclosing Party does not make any representations or warranties as to the accuracy, completeness or fitness for a particular purpose thereof. It is further understood and agreed that no Party or its Representatives shall have any liability or responsibility to another Party or to any other person or entity resulting from the use of any information so furnished or otherwise provided pursuant to this Agreement.



# Lewis River Mature Stand Connectivity

Sheet 3



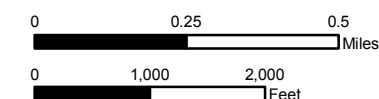
Mature Stands are labelled with the total score and the Asset ID.

## Legend

- Priority Mature Stand
- Non-priority Mature Stand
- Road
- Stream
- Stream Buffer
- Raptor Nest Buffer
- Raptor Roost Buffer
- Spotted Owl Area
- Old Growth
- Cougar Creek Conservation Covenant
- Siouxon SOSEA
- Siouxon SOSEA Buffer
- Management Unit
- Water Body



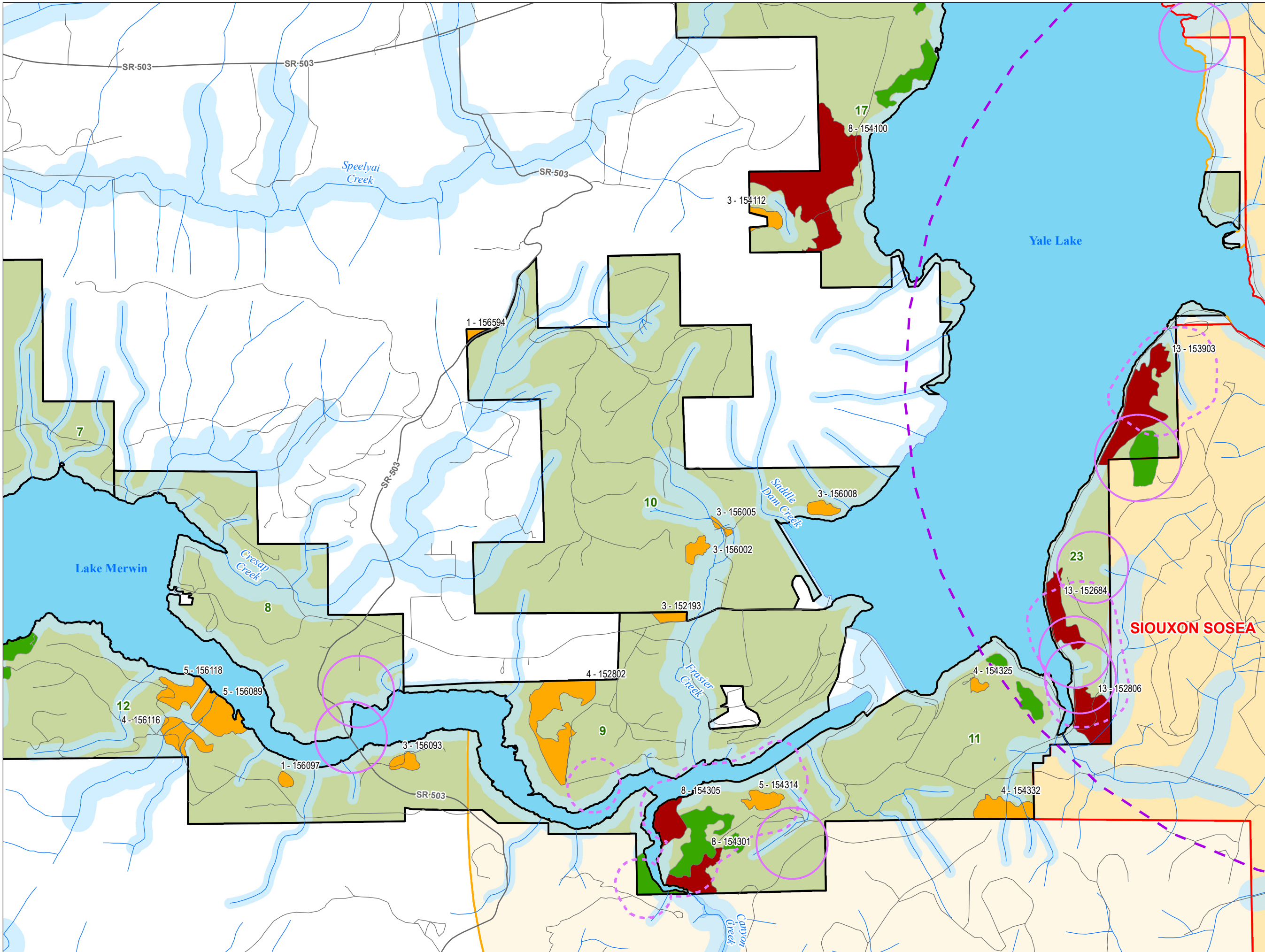
1:20,000



GIS Support Services  
Solutions Group  
gisdept@PacifiCorp.com

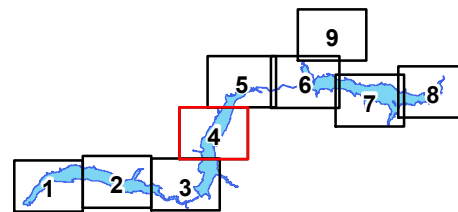
Data is projected in UTM Zone 10, NAD83, meters.

No Warranty. With respect to any information, including but not limited to the Confidential Information, which a Party furnishes or otherwise discloses to another Party for the purpose of evaluating Compliance, it is understood and agreed that the Disclosing Party does not make any representations or warranties as to the accuracy, completeness or fitness for a particular purpose thereof. It is further understood and agreed that no Party or its Representatives shall have any liability or responsibility to another Party or to any other person or entity resulting from the use of any information so furnished or otherwise provided pursuant to this Agreement.



# Lewis River Mature Stand Connectivity

Sheet 4



Mature Stands are labelled with the total score and the Asset ID.

## Legend

- Priority Mature Stand
- Non-priority Mature Stand
- Road
- Stream
- Stream Buffer
- Raptor Nest Buffer
- Raptor Roost Buffer
- Spotted Owl Area
- Old Growth
- Cougar Creek Conservation Covenant
- Siouxon SOSEA
- Siouxon SOSEA Buffer
- Management Unit
- Water Body



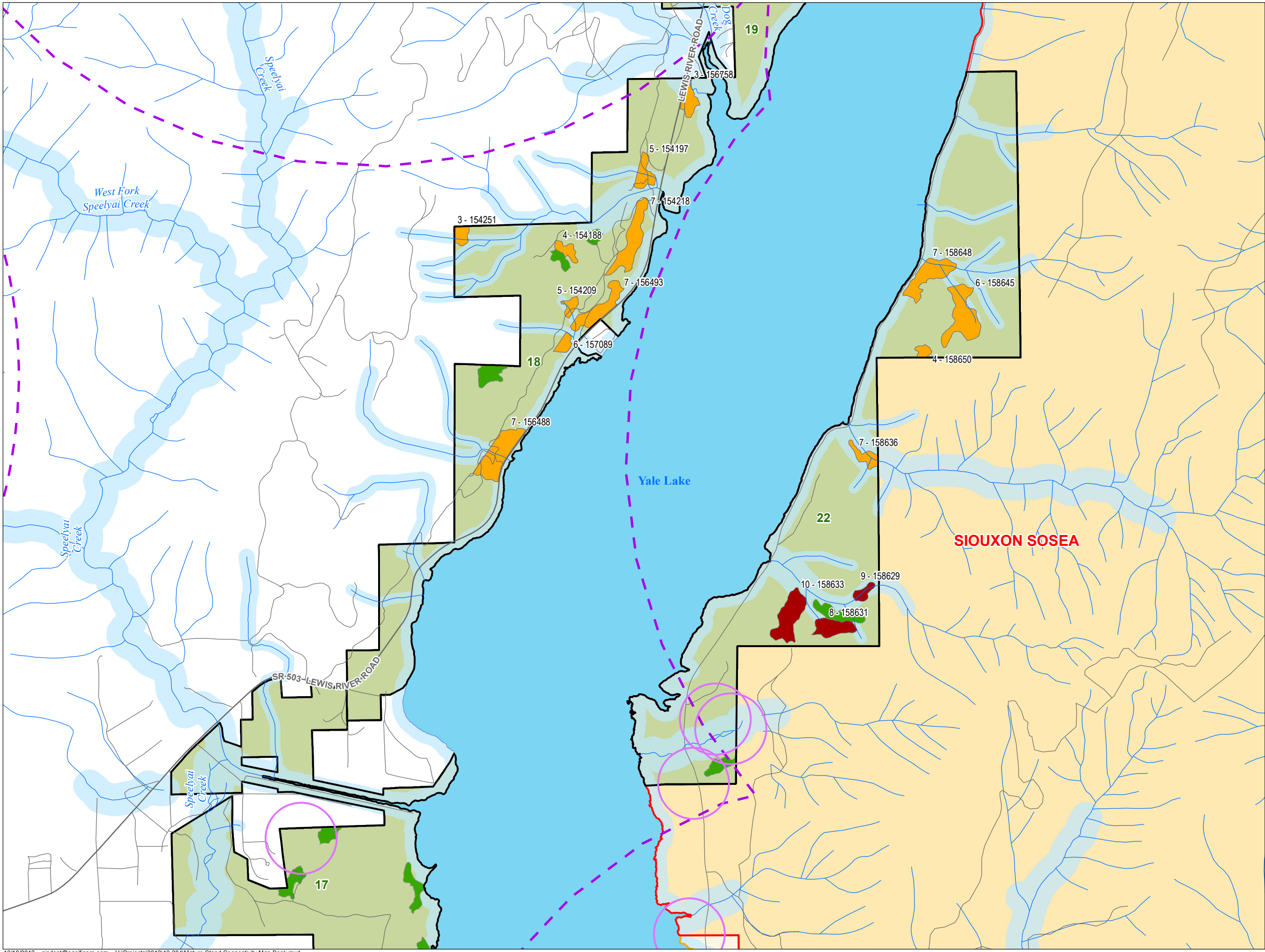
1:20,000



GIS Support Services  
Solutions Group  
gisdept@PacifiCorp.com

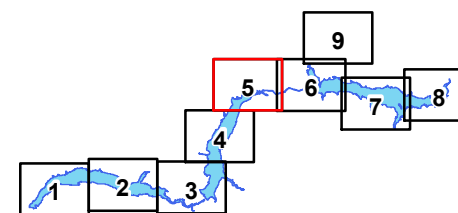
Data is projected in UTM Zone 10, NAD83, meters.

No Warranty. With respect to any information, including but not limited to the Confidential Information, which a Party furnishes or otherwise discloses to another Party for the purpose of evaluating Compliance, it is understood and agreed that the Disclosing Party does not make any representations or warranties as to the accuracy, completeness or fitness for a particular purpose thereof. It is further understood and agreed that no Party or its Representatives shall have any liability or responsibility to another Party or to any other person or entity resulting from the use of any information so furnished or otherwise provided pursuant to this Agreement.



# Lewis River Mature Stand Connectivity

Sheet 5



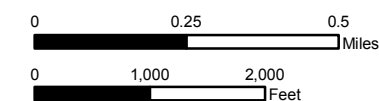
Mature Stands are labelled with the total score and the Asset ID.

## Legend

- Priority Mature Stand
- Non-priority Mature Stand
- Road
- Stream
- Stream Buffer
- Raptor Nest Buffer
- Raptor Roost Buffer
- Spotted Owl Area
- Old Growth
- Cougar Creek Conservation Covenant
- Siouxon SOSEA
- Siouxon SOSEA Buffer
- Management Unit
- Water Body



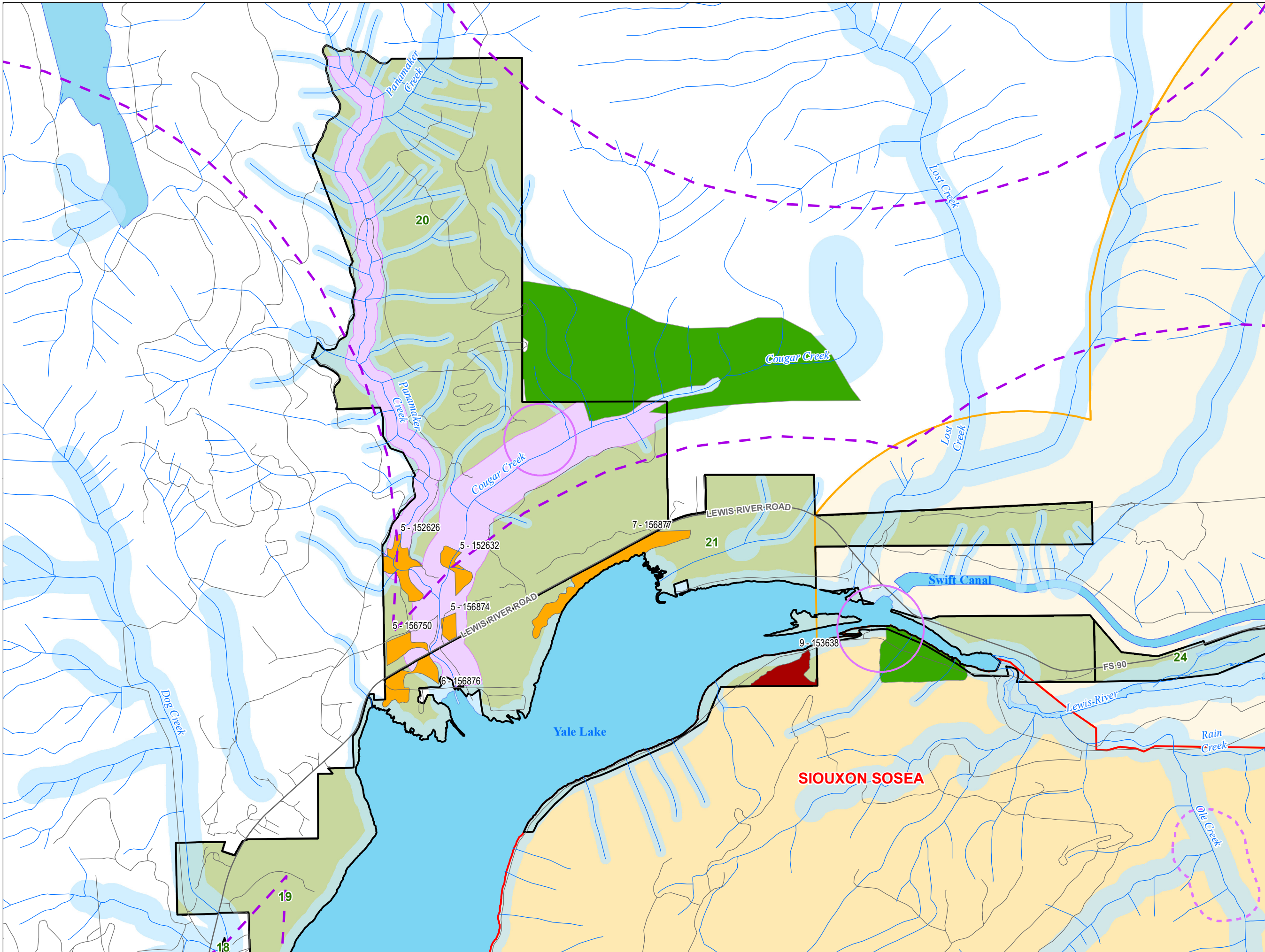
1:20,000



GIS Support Services  
Solutions Group  
gisdept@PacifiCorp.com

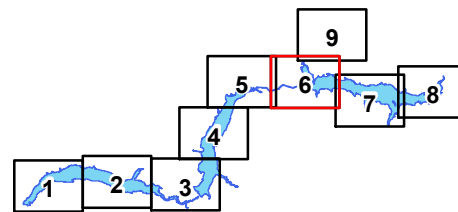
Data is projected in UTM Zone 10, NAD83, meters.

No Warranty. With respect to any information, including but not limited to the Confidential Information, which a Party furnishes or otherwise discloses to another Party for the purpose of evaluating Compliance, it is understood and agreed that the Disclosing Party does not make any representations or warranties as to the accuracy, completeness or fitness for a particular purpose thereof. It is further understood and agreed that no Party or its Representatives shall have any liability or responsibility to another Party or to any other person or entity resulting from the use of any information so furnished or otherwise provided pursuant to this Agreement.



# Lewis River Mature Stand Connectivity

Sheet 6



Mature Stands are labelled with the total score and the Asset ID.

## Legend

- Priority Mature Stand
- Non-priority Mature Stand
- Road
- Stream
- Stream Buffer
- Raptor Nest Buffer
- Raptor Roost Buffer
- Spotted Owl Area
- Old Growth
- Cougar Creek Conservation Covenant
- Siouxon SOSEA
- Siouxon SOSEA Buffer
- Management Unit
- Water Body

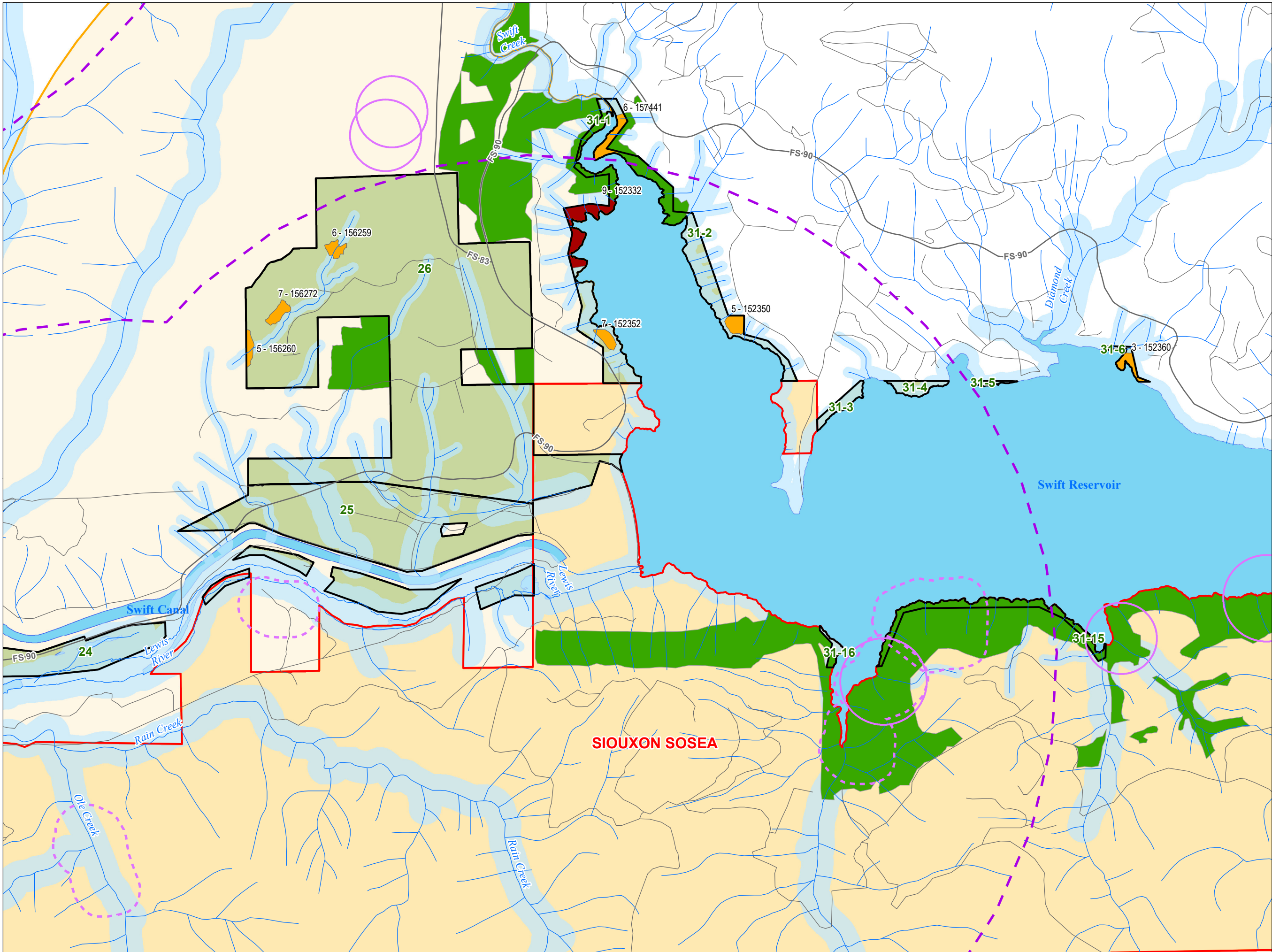


1:20,000



GIS Support Services  
Solutions Group  
gisdept@PacifiCorp.com

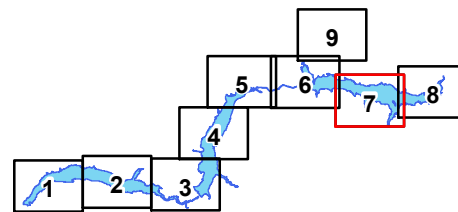
Data is projected in UTM Zone 10, NAD83, meters.  
No Warranty. With respect to any information, including but not limited to the Confidential Information, which a Party furnishes or otherwise discloses to another Party for the purpose of evaluating Compliance, it is understood and agreed that the Disclosing Party does not make any representations or warranties as to the accuracy, completeness or fitness for a particular purpose thereof. It is further understood and agreed that no Party or its Representatives shall have any liability or responsibility to another Party or to any other person or entity resulting from the use of any information so furnished or otherwise provided pursuant to this Agreement.





# Lewis River Mature Stand Connectivity

Sheet 7



Mature Stands are labelled with the total score and the Asset ID.

## Legend

- Priority Mature Stand
- Non-priority Mature Stand
- Road
- Stream
- Stream Buffer
- Raptor Nest Buffer
- Raptor Roost Buffer
- Spotted Owl Area
- Old Growth
- Cougar Creek Conservation Covenant
- Siouxon SOSEA
- Siouxon SOSEA Buffer
- Management Unit
- Water Body



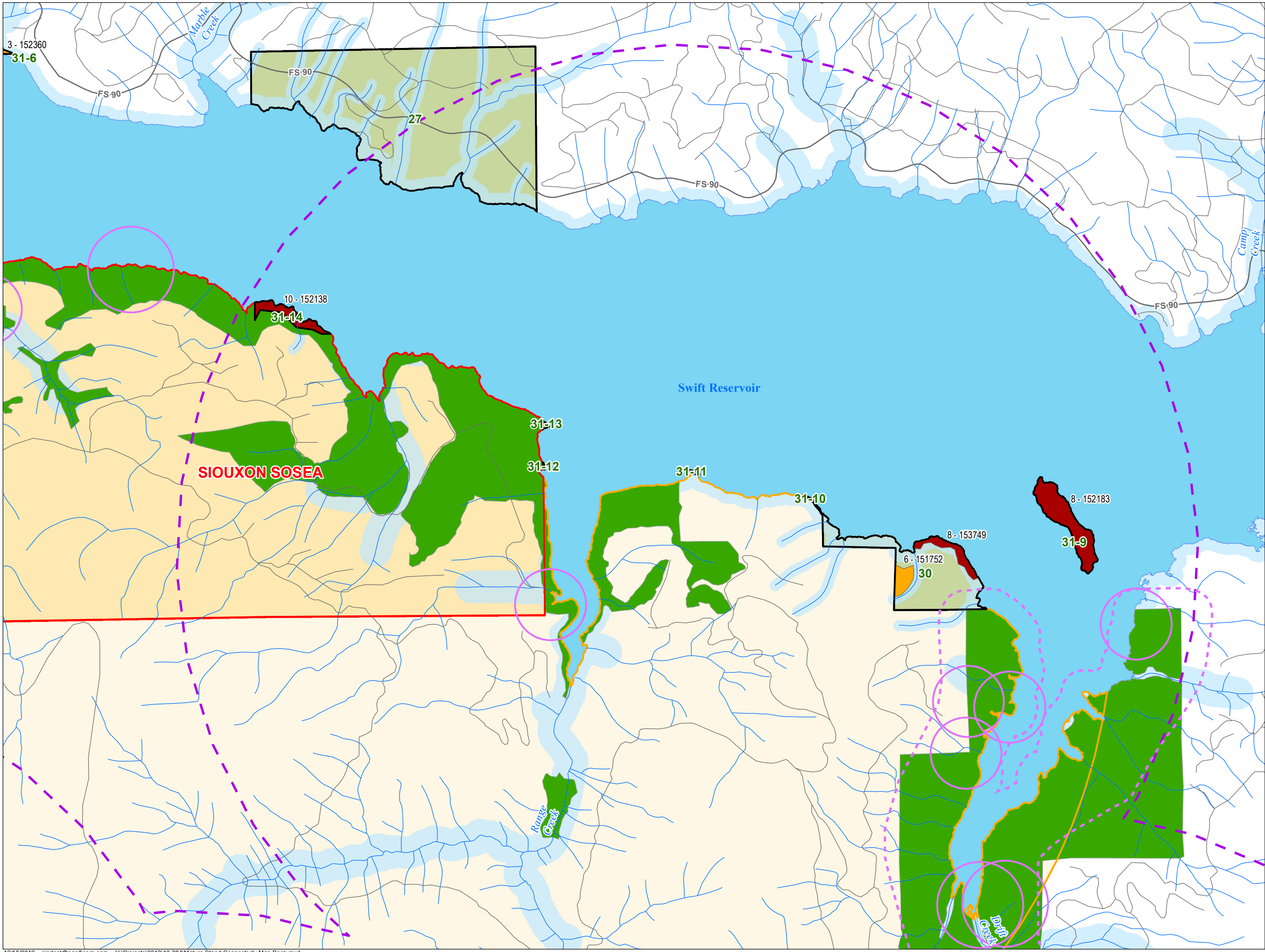
1:20,000



GIS Support Services  
Solutions Group  
gisdept@PacifiCorp.com

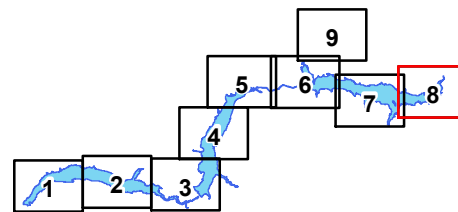
Data is projected in UTM Zone 10, NAD83, meters.

No Warranty. With respect to any information, including but not limited to the Confidential Information, which a Party furnishes or otherwise discloses to another Party for the purpose of evaluating Compliance, it is understood and agreed that the Disclosing Party does not make any representations or warranties as to the accuracy, completeness or fitness for a particular purpose thereof. It is further understood and agreed that no Party or its Representatives shall have any liability or responsibility to another Party or to any other person or entity resulting from the use of any information so furnished or otherwise provided pursuant to this Agreement.



# Lewis River Mature Stand Connectivity

Sheet 8



Mature Stands are labelled with the total score and the Asset ID.

## Legend

- Priority Mature Stand
- Non-priority Mature Stand
- Road
- Stream
- Stream Buffer
- Raptor Nest Buffer
- Raptor Roost Buffer
- Spotted Owl Area
- Old Growth
- Cougar Creek Conservation Covenant
- Siouxon SOSEA
- Siouxon SOSEA Buffer
- Management Unit
- Water Body



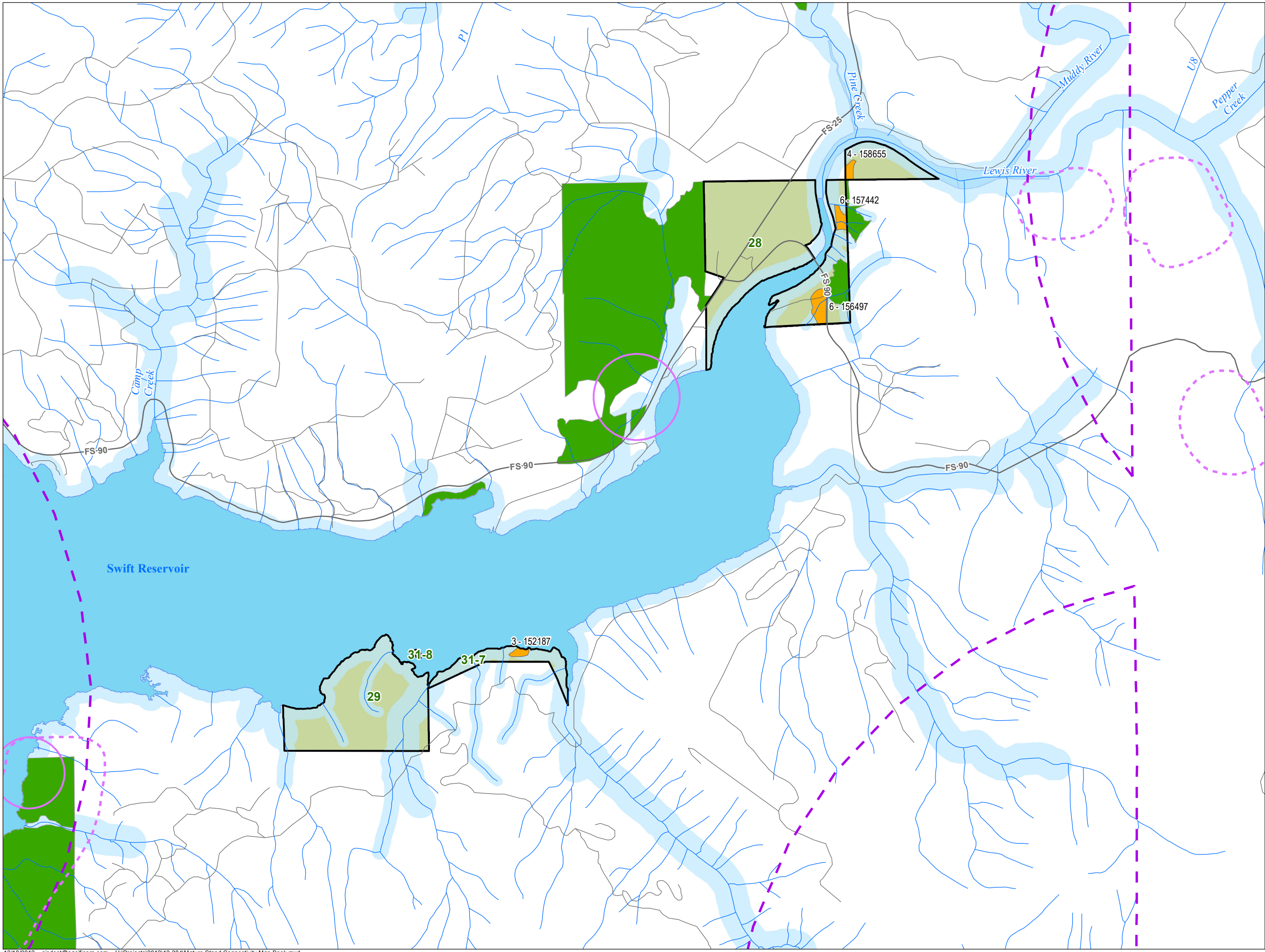
1:20,000



GIS Support Services  
Solutions Group  
gisdept@PacifiCorp.com

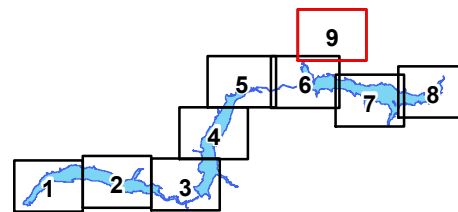
Data is projected in UTM Zone 10, NAD83, meters.

No Warranty. With respect to any information, including but not limited to the Confidential Information, which a Party furnishes or otherwise discloses to another Party for the purpose of evaluating Compliance, it is understood and agreed that the Disclosing Party does not make any representations or warranties as to the accuracy, completeness or fitness for a particular purpose thereof. It is further understood and agreed that no Party or its Representatives shall have any liability or responsibility to another Party or to any other person or entity resulting from the use of any information so furnished or otherwise provided pursuant to this Agreement.



# Lewis River Mature Stand Connectivity

Sheet 9



Mature Stands are labelled with the total score and the Asset ID.

## Legend

- Priority Mature Stand
- Non-priority Mature Stand
- Road
- Stream
- Stream Buffer
- Raptor Nest Buffer
- Raptor Roost Buffer
- Spotted Owl Area
- Old Growth
- Cougar Creek Conservation Covenant
- Siouxon SOSEA
- Siouxon SOSEA Buffer
- Management Unit
- Water Body



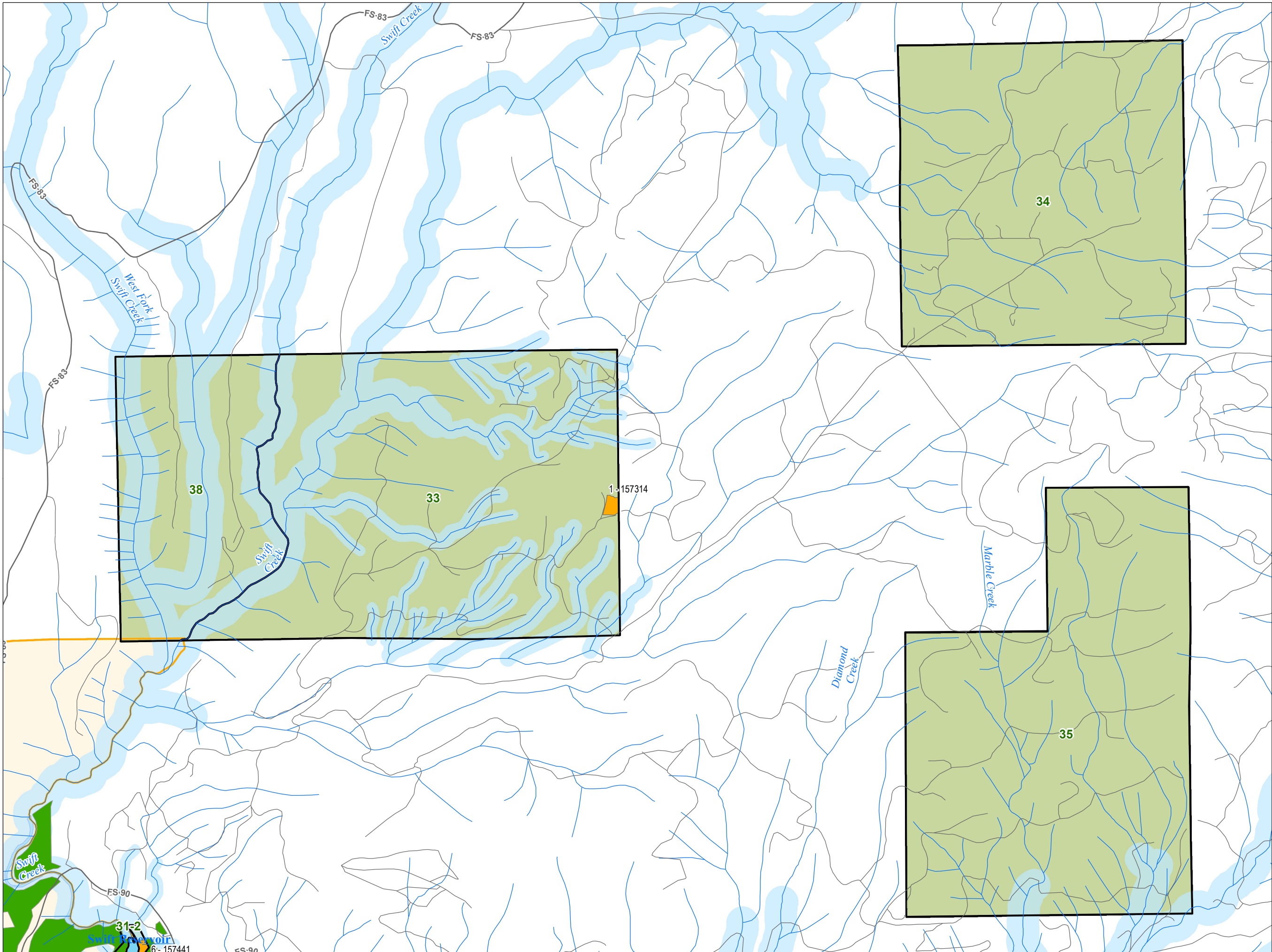
1:20,000



GIS Support Services  
Solutions Group  
gisdept@PacifiCorp.com

Data is projected in UTM Zone 10, NAD83, meters.

No Warranty. With respect to any information, including but not limited to the Confidential Information, which a Party furnishes or otherwise discloses to another Party for the purpose of evaluating Compliance, it is understood and agreed that the Disclosing Party does not make any representations or warranties as to the accuracy, completeness or fitness for a particular purpose thereof. It is further understood and agreed that no Party or its Representatives shall have any liability or responsibility to another Party or to any other person or entity resulting from the use of any information so furnished or otherwise provided pursuant to this Agreement.



ID	LOAD_DT	VEG	TMU	ACRES	TOTAL	PRI_FLG	SIZE_CAT	SIZE_SCR	RIP_CAT	RIP_SCR	OG_CAT	OG_SCR	OBJ_CAT	OBJ_SCR	NEST_FLG	NEST_SCR	RST_FLG	RST_SCR	MISC_FLG	STAND_NOTES
151752	5/6/2006	M	30	3.59	6		C		1 C		1 B		2 I		2		0		0	Score is less than 8
152138	2/9/2012	M	31-14	5.32	10	Y	B		2 B		2 A		3 J		3		0		0	Stand Score is >8
152183	5/6/2006	M	31-9	15.02	8	Y	A		3 B		2 B		2 H		1		0		0	Inaccessible
152187	5/6/2006	M	31-7	1.00	3		C		1 B		2				0		0		0	Score is less than 8
152193	5/6/2006	M	9	2.55	3		C		1 B		2				0		0		0	Score is less than 8
152198	5/6/2006	M	13	14.27	7		A		3 B		2				0	0 Y	2		0	Score is less than 8
152332	5/6/2006	M	31-1	8.12	9	Y	B		2 B		2 A		3 I		2		0		0	Stand Score is >8
152350	5/6/2006	M	31-2	2.35	5		C		1 B		2 C		1 H		1		0		0	Score is less than 8
152352	5/6/2006	M	31-1	1.86	7		C		1 B		2 B		2 I		2		0		0	Score is less than 8
152360	5/6/2006	M	31-6	2.21	3		C		1 B		2				0		0		0	Score is less than 8
152529	5/6/2006	M	1	4.16	3		C		1 B		2				0		0		0	Score is less than 8
152557	5/6/2006	M	3	1.81	1		C		1		0				0		0		0	Score is less than 8
152561	5/6/2006	M	3	1.31	1		C		1		0				0		0		0	Score is less than 8
152626	5/6/2006	M	20	9.04	5		B		2 A		3				0		0		0	Score is less than 8
152632	5/6/2006	M	20	5.14	5		B		2 A		3				0		0		0	Score is less than 8
152684	5/6/2006	M	23	10.36	13	Y	A		3 B		2 A		3 I		2	Y	2	Y	1	Stand Score is >8
152714	5/6/2006	M	13	5.14	7		B		2 B		2 A		3		0		0		0	Score is less than 8
152802	5/6/2006	M	9	21.69	4		A		3		0 C		1		0		0		0	Score is less than 8
152806	5/6/2006	M	23	13.21	13	Y	A		3 B		2 A		3 I		2	Y	2	Y	1	Stand Score is >8
153052	5/6/2006	M	14	30.28	7		A		3 B		2				0	Y	2		0	Score is less than 8
153072	5/6/2006	M	14	13.64	5		A		3 B		2				0		0		0	Score is less than 8
153092	5/6/2006	M	2	2.29	6		C		1 B		2 A		3		0		0		0	Score is less than 8
153638	5/6/2006	M	21	9.01	9	Y	B		2 B		2 B		2 J		3		0		0	Stand Score is >8
153749	5/6/2006	M	30	4.46	8	Y	C		1 B		2 A		3 I		2		0		0	Inaccessible
153857	5/6/2006	M	14	1.03	3		C		1 B		2				0		0		0	Score is less than 8
153868	5/6/2006	M	13	7.08	4		B		2 B		2				0		0		0	Score is less than 8
153903	5/6/2006	M	23	22.80	13	Y	A		3 B		2 A		3 I		2	Y	2	Y	1	Stand Score is >8
154100	3/5/2010	M	17	44.86	8	Y	A		3 B		2 A		3		0		0		0	yes due to size
154112	3/5/2010	M	17	3.00	3		C		1 B		2				0		0		0	Score is less than 8
154188	12/20/2010	M	18	1.95	4		C		1		0 A		3		0		0		0	Score is less than 8
154197	12/20/2010	M	18	3.35	5		C		1 B		2 B		2		0		0		0	Score is less than 8
154209	12/20/2010	M	18	1.56	5		C		1 C		1 A		3		0		0		0	Score is less than 8
154218	12/20/2010	M	18	8.09	7		B		2 B		2 A		3		0		0		0	Score is less than 8
154251	12/20/2010	M	18	1.95	3		C		1 C		1 C		1		0		0		0	Score is less than 8
154301	12/20/2010	M	11	8.16	8	Y	B		2 B		2 A		3		0		0	Y	1	Good Connectivity- Canyon Creek
154305	12/20/2010	M	11	7.97	8	Y	B		2 B		2 A		3		0		0	Y	1	Good Connectivity- Canyon Creek
154314	12/20/2010	M	11	4.39	5		C		1		0 A		3		0		0	Y	1	Score is less than 8
154325	12/20/2010	M	11	1.38	4		C		1		0 A		3		0		0		0	Score is less than 8
154332	12/20/2010	M	11	8.36	4		B		2 C		1 C		1		0		0		0	Score is less than 8
155585	10/17/2011	M	2	1.70	6		C		1 B		2 A		3		0		0		0	Score is less than 8
155588	10/17/2011	M	2	2.23	6		C		1 B		2 C		1		0	Y	2		0	Score is less than 8
155598	10/17/2011	M	2	3.77	6		C		1 B		2 A		3		0		0		0	Score is less than 8
155601	10/17/2011	M	2	1.53	6		C		1 B		2 A		3		0		0		0	Score is less than 8
155603	10/17/2011	M-T	2	5.12	5		B		2		0 C		1		0	Y	2		0	Score is less than 8
155617	10/18/2011	M	4	5.13	7		B		2 B		2 A		3		0		0		0	Score is less than 8
155621	10/18/2011	M	4	2.62	3		C		1 B		2				0		0		0	Score is less than 8
155625	10/18/2011	M	4	2.13	3		C		1 B		2				0		0		0	Score is less than 8
155642	10/18/2011	M	4	4.99	4		C		1 B		2 C		1		0		0		0	Score is less than 8
155662	10/19/2011	M-T	5	15.28	9	Y	A		3 B		2 A		3 H		1		0		0	Stand Score is >8
155719	10/24/2011	M	6	1.60	3		C		1 B		2				0		0		0	Score is less than 8
155737	10/24/2011	M	6	3.24	6		C		1 B		2 A		3		0		0		0	Score is less than 8
155743	10/24/2011	M-T	6	33.88	6		A		3		0 A		3		0		0		0	Score is less than 8
155744	10/24/2011	M-T	6	11.43	5		A		3 B		2				0		0		0	Score is less than 8
155745	10/24/2011	M-T	6	14.88	5		A		3 B		2				0		0		0	Score is less than 8
155760	10/24/2011	M	6	3.34	1		C		1		0				0		0		0	Score is less than 8
155764	10/24/2011	M	6	14.99	6		A		3 B		2 C		1		0		0		0	Score is less than 8
155771	10/19/2011	M	6	3.83	3		C		1 C		1 C		1		0		0		0	Score is less than 8
155810	10/19/2011	M	6	12.59	6		A		3 B		2 C		1		0		0		0	Score is less than 8
155945	10/24/2011	M	6	7.24	3		B		2 C		1				0		0		0	Score is less than 8
155953	10/18/2011	M	4	11.87	7		A		3 B		2				0	Y	2		0	Score is less than 8
155954	10/18/2011	M	4	3.22	5		C		1 B		2				0	Y	2		0	Score is less than 8
156002	10/27/2011	M	10	3.04	3		C		1 B		2				0		0		0	Score is less than 8
156005	10/27/2011	M	10	1.03	3		C		1 B		2				0		0		0	Score is less than 8
156008	10/27/2011	M	10	2.85	3		C		1 B		2				0		0		0	Score is less than 8
156029	10/19/2011	M	6	12.00	4		A		3		0 C		1		0		0		0	Score is less than 8
156089	11/1/2011	M	12	11.83	5		A		3 B		2				0		0		0	Score is less than 8
156093	11/1/2011	M-T	12	3.09	3		C		1 B		2				0		0		0	Score is less than 8
156097	11/1/2011	M	12	1.39	1		C		1		0				0		0		0	Score is less than 8

ID	LOAD_DT	VEG	TMU	ACRES	TOTAL	PRI_FLG	SIZE_CAT	SIZE_SCR	RIP_CAT	RIP_SCR	OG_CAT	OG_SCR	OBJ_CAT	OBJ_SCR	NEST_FLG	NEST_SCR	RST_FLG	RST_SCR	MISC_FLG	STAND_NOTES
156116	11/1/2011	M	12	7.38	4		B	2	B	2		0		0		0		0		Score is less than 8
156118	11/1/2011	M	12	7.37	5		B	2	B	2	C	1		0		0		0		Score is less than 8
156159	11/2/2011	M-T	15	9.92	8	Y	B	2	B	2	A	3		0		0	Y		1	Low connectivity
156164	11/2/2011	M-T	15	11.52	7		A	3		0	A	3		0		0	Y		1	Score is less than 8
156170	11/2/2011	M	15	6.43	8	Y	B	2	B	2	A	3		0		0	Y		1	Within buffer unable to manage
156173	11/2/2011	M	15	3.20	6		C	1	C	1	A	3		0		0	Y		1	Score is less than 8
156180	11/2/2011	M	15	5.50	4		B	2	B	2		0		0		0		0		Score is less than 8
156185	11/2/2011	M	15	13.95	5		A	3	B	2		0		0		0		0		Score is less than 8
156201	11/3/2011	M	16	3.70	7		C	1	B	2	C	1		0	Y		2	Y	1	Score is less than 8
156209	11/3/2011	M	16	2.78	2		C	1		0	C	1		0		0		0		Score is less than 8
156215	11/3/2011	M	16	19.85	9	Y	A	3	B	2	A	3		0		0	Y		1	Stand Score is >8
156227	11/3/2011	M	16	12.91	9	Y	A	3	B	2	A	3		0		0	Y		1	Stand Score is >8
156259	11/3/2011	M	26	1.85	6		C	1	C	1	B	2	I	2		0		0		Score is less than 8
156260	11/3/2011	M	26	1.65	5		C	1	C	1	C	1	I	2		0		0		Score is less than 8
156272	11/3/2011	M	26	2.21	7		C	1	C	1	A	3	I	2		0		0		Score is less than 8
156488	12/20/2010	M	18	9.17	7		B	2	B	2	A	3		0		0		0		Score is less than 8
156493	12/20/2010	M	18	6.28	7		B	2	B	2	A	3		0		0		0		Score is less than 8
156497	12/20/2010	M	28	3.55	6		C	1	B	2	A	3		0		0		0		Score is less than 8
156587	5/6/2006	M	2	1.50	4		C	1		0	A	3		0		0		0		Score is less than 8
156594	10/27/2011	M	10	1.05	1		C	1		0		0		0		0		0		Score is less than 8
156750	5/6/2006	M	20	4.80	5		C	1	A	3		0	H	1		0		0		Score is less than 8
156758	12/20/2010	M	18	3.16	3		C	1	B	2		0		0		0		0		Score is less than 8
156826	5/6/2006	M	2	4.54	5		C	1	C	1	A	3		0		0		0		Score is less than 8
156874	5/6/2006	M	20	2.58	5		C	1	A	3		0	H	1		0		0		Score is less than 8
156876	5/6/2006	M	21	8.26	6		B	2	A	3		0	H	1		0		0		Score is less than 8
156877	5/6/2006	M	21	17.21	7		A	3	B	2	C	1	H	1		0		0		Score is less than 8
156921	10/24/2011	M	6	1.63	5		C	1		0	A	3	H	1		0		0		Score is less than 8
157019	5/6/2006	M	13	25.09	5		A	3	B	2		0		0		0		0		Score is less than 8
157037	10/18/2011	M	4	2.20	4		C	1		0	B	2	H	1		0		0		Score is less than 8
157083	10/19/2011	M	6	8.67	2		B	2		0		0		0		0		0		Score is less than 8
157089	12/20/2010	M	18	1.63	6		C	1	B	2	A	3		0		0		0		Score is less than 8
157104	10/19/2011	M	6	5.60	2		B	2		0		0		0		0		0		Score is less than 8
157314	1/9/2012	M-T	33	1.93	1		C	1		0		0		0		0		0		Score is less than 8
157441	2/9/2012	M	31-2	3.65	6		C	1	B	2	A	3		0		0		0		Score is less than 8
157442	2/9/2012	M	28	1.69	6		C	1	B	2	A	3		0		0		0		Score is less than 8
157649	2/22/2012	M	3	1.18	1		C	1		0		0		0		0		0		Score is less than 8
158461	12/10/2012	M-T	6	3.15	2		C	1	C	1		0		0		0		0		Score is less than 8
158546	12/12/2012	M	15	1.29	2		C	1	C	1		0		0		0		0		Score is less than 8
158561	12/12/2012	M	15	2.38	1		C	1		0		0		0		0		0		Score is less than 8
158629	12/20/2010	M	22	1.68	9	Y	C	1	B	2	A	3	J	3		0		0		Stand Score is >8
158631	12/20/2010	M	22	4.55	8	Y	C	1	C	1	A	3	J	3		0		0		Yes SOSEA and inaccessible
158633	12/20/2010	M	22	7.80	10	Y	B	2	B	2	A	3	J	3		0		0		Stand Score is >8
158636	12/20/2010	M	22	2.51	7		C	1	B	2	C	1	J	3		0		0		Score is less than 8
158645	12/20/2010	M	22	9.64	6		B	2	C	1		0	J	3		0		0		Score is less than 8
158648	12/20/2010	M	22	7.17	7		B	2	B	2		0	J	3		0		0		Score is less than 8
158650	12/20/2010	M	22	1.24	4		C	1		0		0	J	3		0		0		Score is less than 8
158655	12/20/2010	M	28	1.13	4		C	1		0	A	3		0		0		0		Score is less than 8