

# LEWIS RIVER TERRESTRIAL COORDINATION COMMITTEE

Facilitator: KENDEL EMMERSON  
503-813-6040; CELL 509-774-8102  
Location: SKYPE MEETING ONLY  
Date: July 8, 2020  
Time: 9:00 AM – 10:30 AM

## Agenda Items

- 9:00 a.m. Welcome
- Review Agenda & 6/10/20 Meeting Notes
  - Review and Accept Agenda & 6/10/20 Meeting Notes
- 9:15 a.m. Land Acquisition Update and Final Financial Report
- 9:30 a.m. Study/Work Product Updates
- Update Saddle Dam Seismic
  - Speelyai Feasibility Study Update
  - 2020 Timber Harvest Update
- 10:15 a.m. Next Meeting's Agenda
- Note: all meeting notes and the meeting schedule can be located at:  
<https://www.pacificorp.com/energy/hydro/lewis-river/acc-tcc.html>
- 10:30 a.m. Meeting adjourn

→ [Join Skype Meeting](#)

Join by phone

[\(503\) 813-6614](#) (US)

English (United States)

[\(503\) 813-5252 \[Portland, OR\]](#) (US)

English (United States)

[\(855\) 499-5252 \[Toll-Free\]](#) (US)

English (United States)

**Conference ID: 4604738**

**FINAL Meeting Notes**  
**Lewis River License Implementation**  
**Terrestrial Coordination Committee (TCC) Meeting**  
**July 8, 2020**  
**Conference Call Only**

**TCC Representatives Present: (7)**

Kendel Emmerson, PacifiCorp  
 Summer Peterman, PacifiCorp  
 Kim McCune, PacifiCorp  
 Peggy Miller, WDFW  
 Eric White, Cowlitz Indian Tribe  
 Ray Crosswell, RMEF  
 Amanda Froberg, Cowlitz PUD

**Calendar:**

August 12, 2020	TCC Meeting	Cancelled
September 9, 2020	TCC Meeting	Skype Call Only

<b>Parking Lot Items</b>	<b>Status</b>
Emmerson/McCune: Contact PacifiCorp’s properties department to discuss further TNC detail and report to the TCC at the next meeting.	<b>In progress</b>

Kendel Emmerson (PacifiCorp) called the meeting to order at 9:04am. Emmerson reviewed the agenda and the June 10, 2020 meeting notes. The TCC requested additional clarification regarding descriptive details around the feasibility study trail options so they agreed to postpone finalizing the June 10, 2020 meeting notes until the September 9, 2020 TCC meeting.

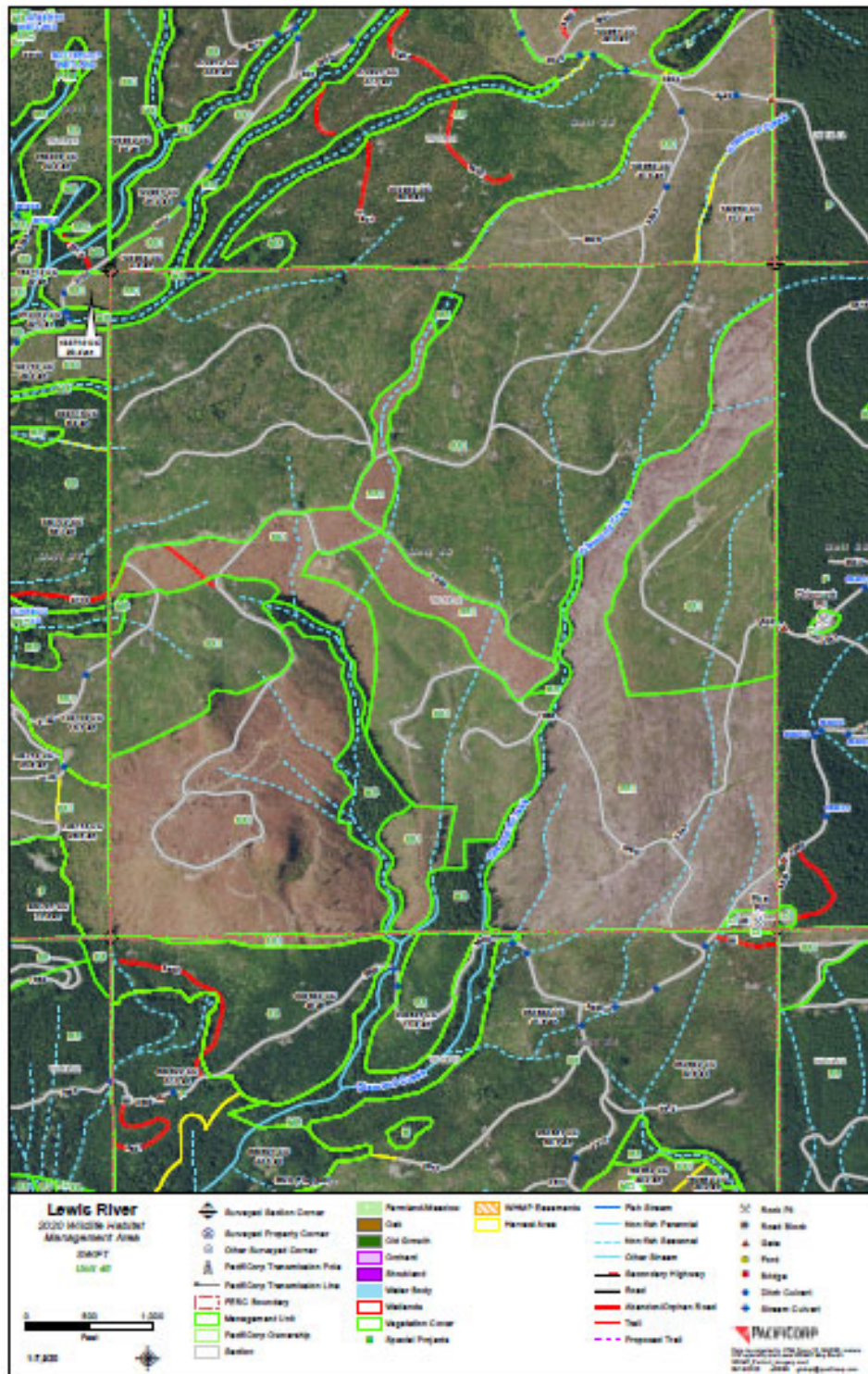
**Public Comment Opportunity:**

None

**Land Acquisition Update and Final Financial Report**

Emmerson informed the TCC attendees that the planting was completed in about 2 days and had wonderful weather for the trees and could not have asked for better growing conditions. Below is a 2019 image of this section. The area that doesn’t have any trees is the 2018/2019 timber harvest and the green areas are the 2012 harvest, planted in 2013. Emmerson went out to try and find a flat area to put a meadow in. Although there were flat areas the prior landowner used two different logging contractors; one that removed adequate amount of slash and one that left a tremendous amount of slash. This limited the available flat areas that could be grass seeded. Emmerson was able to locate an area in the western half that is about 2.5 acre in size that will be grass seeded this fall. The 2013 harvest areas were planted at approximately 350 trees per acre and today is an estimated 600 trees per acre due to hemlocks coming in naturally with an average height of 8 to 10 feet. PacifiCorp is also taking the timber harvest and dividing them up into more manageable timber harvest areas for PacifiCorp and hope to get it done this month. ANE didn’t have any culvert data, so PacifiCorp will work on getting these mapped. The road layer is pretty good as extracted from Google Earth. The gates leading into MU 35 are now all open as we don’t need them locked anymore. Eventually PacifiCorp may remove the gates and find another place for them. Emmerson determined Plantskydd application, which prevents big game from browsing on seedlings, to be unnecessary because

overtime the trees per acres will increase due to natural recruitment and the abundance of other available forage. If we discover that we are having so much tree loss due to elk we can do the Plantskydd any time. We will wait and see and the elk may thin the trees out for us quite nicely.



2020 – Management Unit 40

## Land Acquisition Final Financial Report\*

Ernest money to Ticor Title for ANE purchase	\$ 84,000.00
Property purchase; includes escrow and title closing costs of \$1,856.59	\$2,017,856.59
2019 ESA Phase I	\$ 4,910.65
2020 ESA Phase I updated	\$ 3,498.50
2020 Desktop survey of title encumbrances	\$ 1,530.00
2019 Land Appraisal	\$10,000.00
2019 Timber Appraisal	\$ 3,200.00
<b>Remainder in the fund</b>	<b>\$ 17,827.11</b>

\*complete financial data was confirmed shortly after the 7/8/20 TCC Meeting.

Emmerson informed the TCC that the remainder of the Swift funds can be used in accordance with the following settlement agreement provision:

*10.2.2 Matching Funds. The TCC may elect, in its discretion, to use all or part of the Swift Fund to match the cash contributions made by local, state, and federal agencies, and other persons or organizations, for acquisition of Interests in Land in the vicinity of the Swift Projects. Any Party may propose a source of matching funds under this subsection.*

The funds will remain in the account and collect interest until such time a suitable use for the funds is determined.

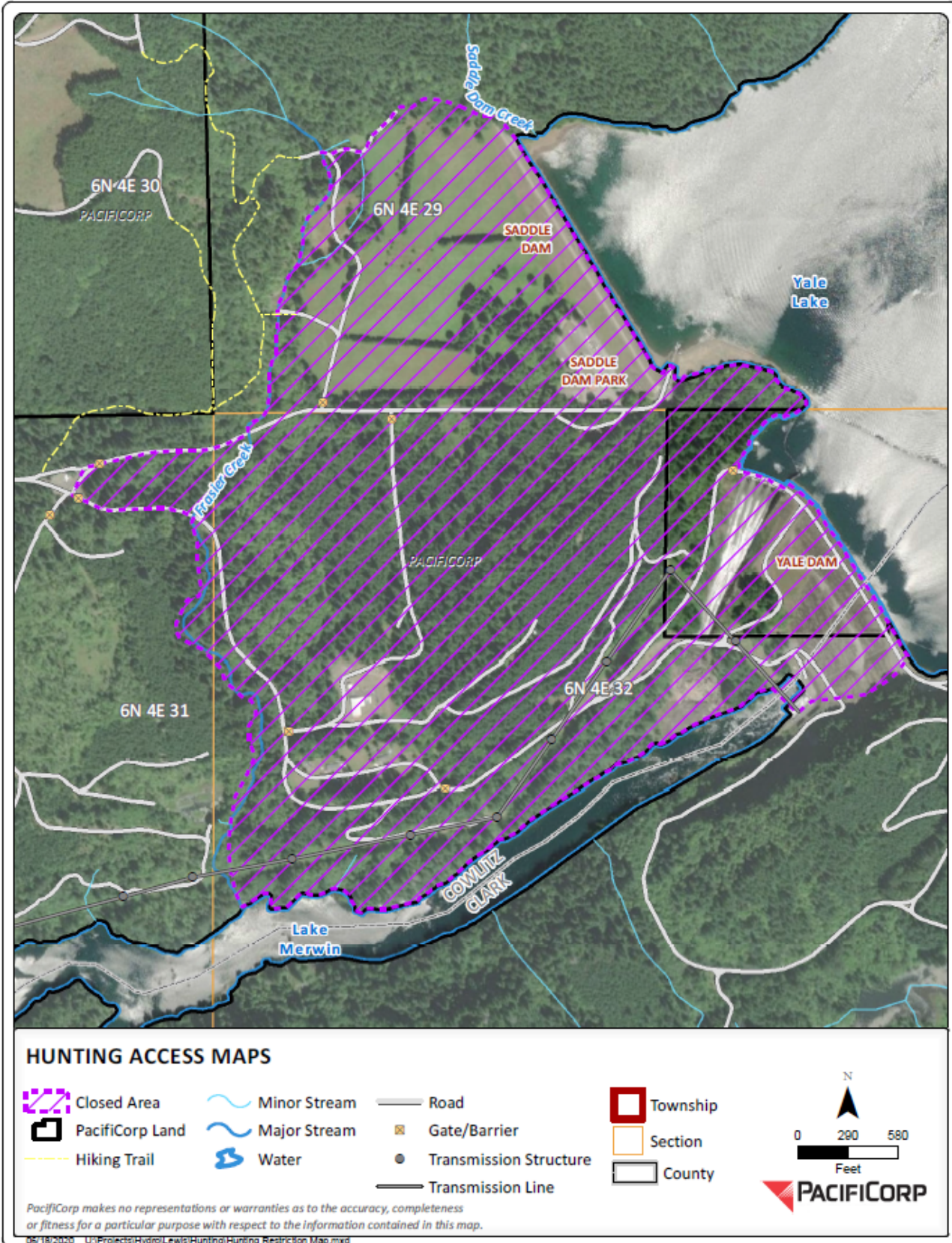
### Study/Work Product Updates

#### Update Saddle Dam Seismic

Drill testing completed and the lab results are expected back today. The findings are critical to determine the design needed and 30% design is expected September 2020. The internal PacifiCorp group plans to get together in October 2020 to go out to Saddle Dam and look at the barrow areas that have been selected. All trails in Saddle Dam have been closed to recreation and it went into effect early June 2020 and the hunting access map has been updated to indicate closure (see maps below). The hunting closure map was reviewed in advance with WDFW to ensure the map made sense since they will field questions from the public and WDFW concurred.

The updated maps have been added to PacifiCorp's website.





June 2020 Hunting Access Closures

### **Speelyai Feasibility Study Update**

On June 26, 2020 PacifiCorp requested an extension of time from the FERC until September 30, 2020 for submittal of the feasibility study in order to incorporate a comprehensive report including the TCC requests and clarifications. The FERC has not yet responded but PacifiCorp will provide an update to the TCC at its September 2020 meeting.

Jessica Kimmick (PacifiCorp) will be invited to the September 2020 TCC meeting and provide an update to the TCC.

Emmerson further noted that some of the questions we had were about wildlife use so she checked with PacifiCorp's contractor and asked about big game forage on the planted cedars in the timber harvest areas and he replied there is very little. . In regards to hunter use right now we have a restricted hunter access area from below the road that is all of Speelyai Park, so if we are going to put a year-round parking area in there we will have to expand that restricted hunting access. The option that the TCC preferred along the road will have the least impact to hunting as we don't think they are hunting in this area. As far as the transmission line what we see is the people park at the gate and walk a ½ - 1 mile before they actually start hunting so we think the impact will be low. The other questions were about wetlands, which park area would meet all future needs and if it was an allowable use along the transmission right of way we need to circle back with Jessica Kimmick and confirm with her.

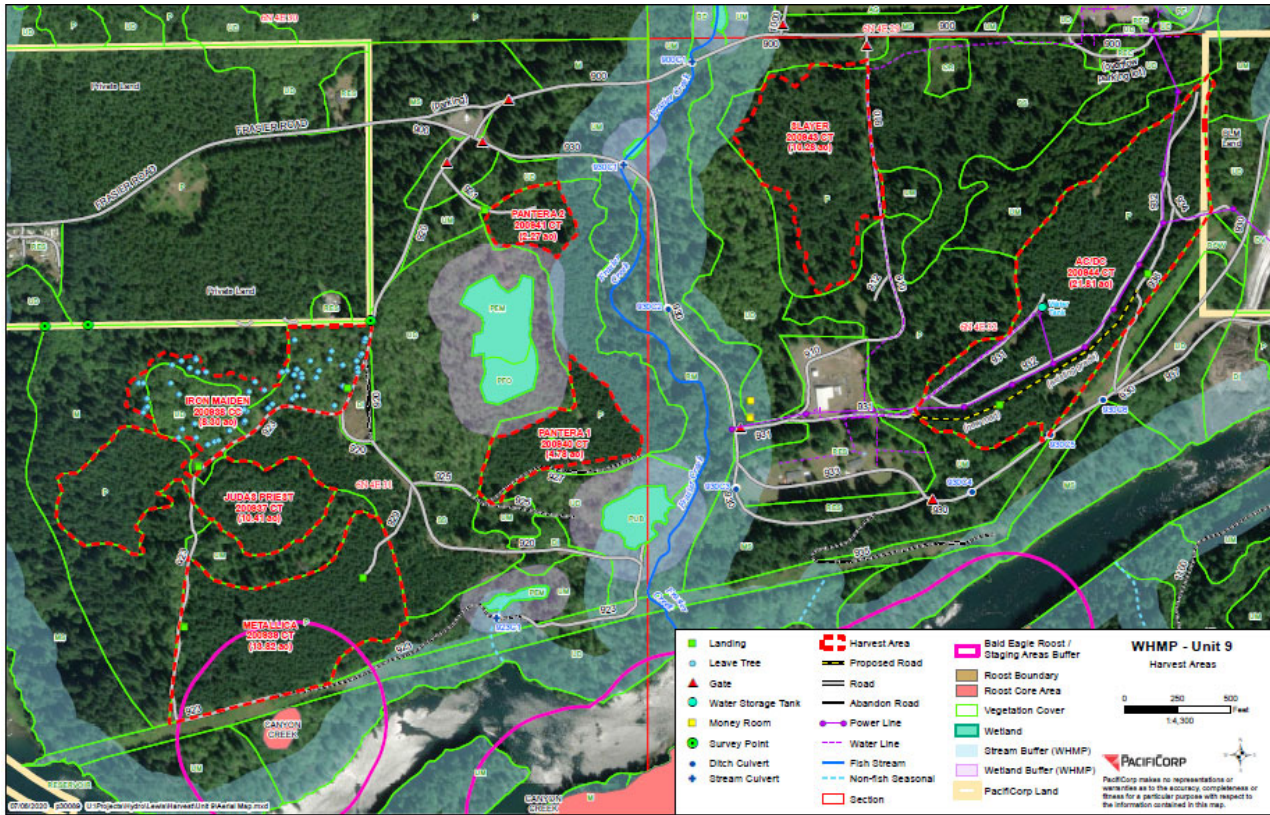
Summer Peterman (PacifiCorp) noted that after speaking with Jessica, PacifiCorp has no obligation under the license to build another and/or expand the lot, determined to be appropriate at this time, in the future. If there is more need in the future the stakeholders will have to wait until the next Settlement Agreement and/or License to readdress future use needs.

### **2020 Timber Harvest Update**

This has been a challenging timber harvest with a lot of nuances. Due to resource conflicts timber harvest areas had to be entirely removed and boundaries revised. At the last meeting the TCC approved combining two harvest areas and harvesting trees within the WHMP buffers and up to Washington Forest Practices Act wetland and riparian buffer to promote faster and larger trees. That area had a resource conflict so it will not be logged in WHMP buffers and will go back to the original harvest areas as shown in the 2020 Annual Plan.

Also timber harvest prices are not favorable as we are going into a recession causing a slow in the timber market and during the start of quarantine several mills closed down. Now that mills are starting to open they are receiving all of the stockpiled wood which is driving prices down. As a result a few of the harvest areas with smaller wood did not seem profitable. It looks as if it will be ok, but things could change.

Just started in Management Unit 2 last week and going up tomorrow to look at it and hear its going well. Will start near Yale Dam next week.



**The TCC agreed to cancel the August TCC meeting and reconvene September 9, 2020. The TCC is hopeful to meet in person at the September meeting.**

**Agenda items for September 9, 2020**

- Review June 10, 2020 and July 8, 2020 Meeting Notes **(TCC COMMENTS DUE August 31, 2020)**
- Study/Work Product Updates
  - Update Saddle Dam Seismic
  - Speelyai Feasibility Study Update

**Next Scheduled Meeting**

September 9, 2020
TBD

**Attachments:**

- July 8, 2020 Meeting Agenda

*Adjourn 9:40 a.m.*