

**Lewis River Hydroelectric Projects
Terrestrial Coordination Committee (TCC)
Meeting Agenda**

Date & Time: **Wednesday, October 9, 2019
9:00 a.m. – 3:00 p.m.**

Place: **City of Woodland & Field Tour
Police Department (Council Chambers)
200 East Scott Avenue
Woodland, WA 98674**

Contacts: **Kendel Emmerson (503) 813-6040; cell 509-774-8102**

Time	Discussion Item
9:00 a.m.	Welcome <ul style="list-style-type: none">➤ Review Agenda & 9/11/19 Meeting Notes➤ Review and Accept Agenda & 9/11/19 Meeting Notes➤ 2020 Meeting Schedule
9:15 a.m.	Land Acquisition Update (Confidential)
9:45 a.m.	Access for Disabled Hunters; Discussion
10:00 a.m.	Safety ¹ orientation for site visit to Upper Hanley Curry Meadow and Devil's Backbone Timber Mgmt. Project
10:45 a.m.	Arrive at Upper Hanley Curry Meadow to review the meadow restoration and pollinator plot
12:00 p.m.	Arrive at Devils Backbone Timber Management Project; lunch upon arrival
1:45 p.m.	Pollinator plots in MU 3 or MU 6, time permitting
2:30 p.m.	Next Meeting's Agenda Note: all meeting notes and the meeting schedule can be located at: https://www.pacificorp.com/energy/hydro/lewis-river/acc-tcc.html
3:00 p.m.	Meeting adjourn

¹ Please bring rain gear and sturdy walking shoes for hiking in the forest. No hard hats needed for this tour. PacificCorp will have 2 vehicles for transportation of up to 4 additional passengers.

PLEASE BRING YOUR LUNCH

Join by Phone
+1 (503) 813-5252 [Portland, Ore.]
+1 (855) 499-5252 [Toll Free]

Conference ID: 3719038

FINAL Meeting Notes
Lewis River License Implementation
Terrestrial Coordination Committee (TCC) Meeting & Field Tour
October 9, 2019
Woodland Police Station, Conference Room

TCC Representatives Present: (6)

Kendel Emmerson, PacifiCorp
 Summer Peterman, PacifiCorp
 Amanda Froberg, Cowlitz PUD
 Kim McCune, PacifiCorp
 Eric Holman, WDFW
 Erik White, Cowlitz Indian Tribe

Guests Present: (1)

Emma Johnson, Cowlitz Indian Tribe

Calendar:

November 13, 2019	TCC Meeting	Conference Call
-------------------	-------------	-----------------

Assignment from October 9, 2019	Status
Emmerson: Review SA 10.3.3 and if it can be used for land acquisition.	Complete – 10/9/19

Parking Lot Items	Status
Emmerson/McCune: Contact PacifiCorp’s properties department to discuss further TNC detail and report to the TCC at the next meeting.	In progress

Kendel Emmerson (PacifiCorp) called the meeting to order at 9:05am. Emmerson reviewed the agenda and asked the TCC if there were any changes/additions. No additions to the agenda were requested.

The TCC reviewed the September 11, 2019 meeting notes and they were approved at 9:10am with no changes.

Public Comment Opportunity:

None

Land Acquisition Update (CONFIDENTIAL)

Emmerson informed the TCC attendees that the seller of the parcel of interest has withdrew from the negotiations. Other parcels of interest in the Lewis River basin are being investigated. Any efforts on revisiting the appraisal have been discontinued.

Additional detail around this topic is considered confidential and proprietary and not for public viewing.

TCC 2020 Meeting Schedule

The TCC agreed to the 2nd Wednesday of every month beginning at 9:00am – 3:00pm and adjust as needed. The TCC further agreed that the Woodland Police Station conference room is working out nicely so Kim McCune (PacifiCorp) will reserve the space for the entire year.

Access for Disabled Hunters Discussion

In response to a disabled hunter inquiry to access Utilities lands behind the gates via e-bike and overnight camping, the TCC and Utilities reviewed its license requirements for public access to project lands.

SA 11.3.4 Recreational Access to Project Lands. *Boating, swimming, any other in-water activity and overnight camping shall not be permitted within the Swift No. 2 Project Boundary.*

SA 11.2.13 Vehicular Access and Use Control. *For each Project, beginning upon Issuance of the New License for that Project, PacifiCorp shall: (1) discourage dispersed upland (non-shoreline) camping and motorized use, by keeping Project roads gated and maintained as necessary; and (2) continue to work with adjacent private landowners and agency resource managers to restrict access from their non-Project lands onto PacifiCorp-owned lands where undesirable motorized access is gained,*

In addition, on May 9, 2018 the TCC agreed that an e-bike is a motorized vehicle and its use will not be allowed on Lewis River WHMP lands.

Management Unit 20 Update

Very wet fall and the topography is very steep, so the harvest area has not been fully scarified this year. It was a safety call so only 2/3 of the area was scarified and the remaining will be completed in 2020. The areas that were scarified were grass seeded this fall. In 2020, scarification will be completed, piles will be burned, and total harvest area will be planted in 2021.

Field Tour Safety Briefing

Emmerson informed the TCC tour attendees to watch for uneven ground, rough roads, tripping hazard, muddy and slippery conditions. There is no concern for overhead hazards and no logging activity in Devil's Backbone.

Depart for Field Tour – 10:15am

Upper Hanley Curry Meadow- review the meadow restoration and pollinator plot

Emmerson informed the TCC that Upper Hanley Curry Meadow (11 acres) passed its resource survey and the no till drill seeding is nearly complete. The drilling tractor will be on site today for the tour.

Upper Hanley Curry Meadow Mix			
		%	
Mountain brome	4	20.83%	
Blue wildrye	5	26.04%	
Native Red fescue	2	10.42%	
Slender hairgrass	0.5	2.60%	
Meadow Barley	0.5	2.60%	62.50% = Grasses
Ladino clover	3	15.63%	
Small burnett	3	15.63%	
Western yarrow	0.2	1.04%	
blackeyed susan	0.25	1.30%	
purple coneflower	0.25	1.30%	
lupine river	0.25	1.30%	
camas large	0.25	1.30%	37.50% = forbs
Total lbs. per acre	19.2	100.00%	
Cost/lb.	\$ 11.97		
Cost/acre	\$ 229.82		100.00%
10 acres	\$2,298.24		
Lbs Needed	192.00		





Devil's Backbone Timber Management Project <Working Lunch 12:30pm>

Amanda Froberg (Cowlitz PUD) informed the TCC attendees that logging is complete and the slash will be burned this November, which is one year ahead of schedule. Seeding will take place Spring 2020.

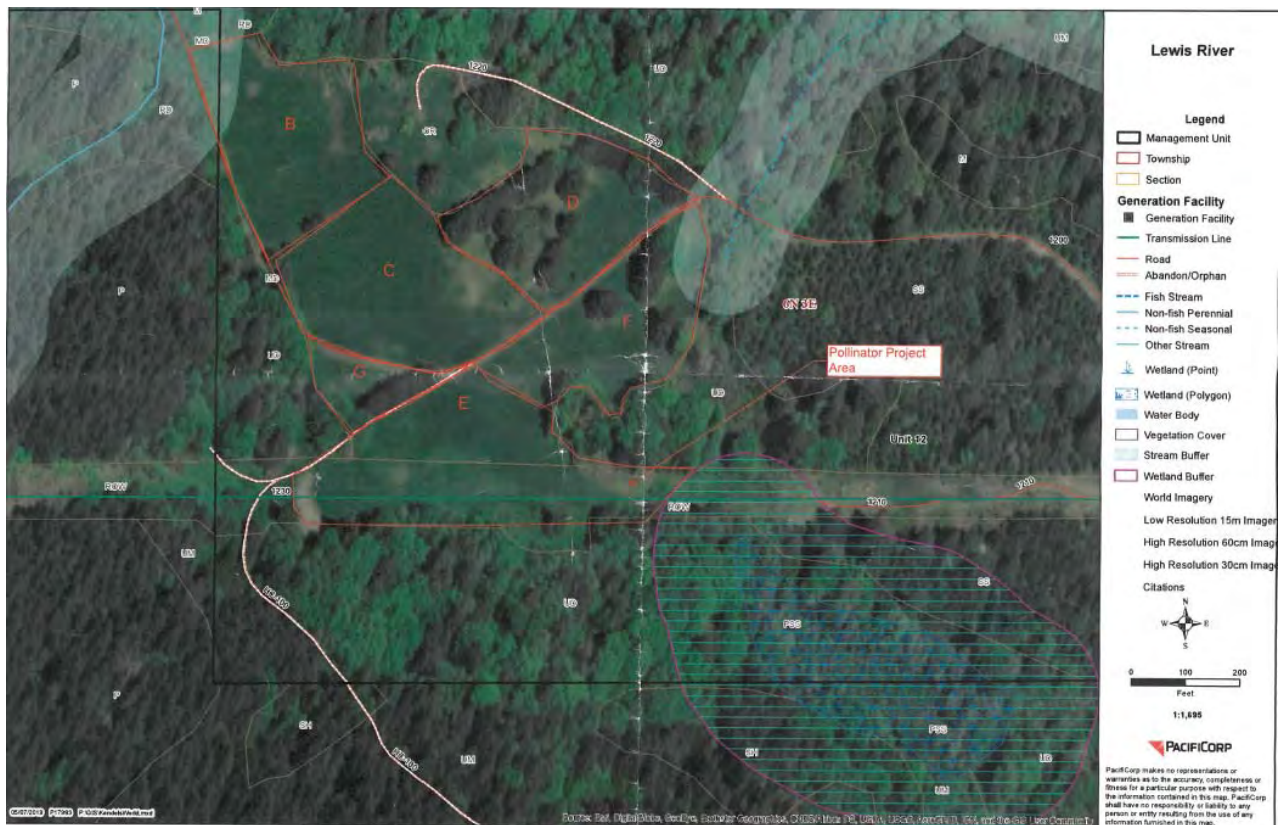




Pollinator plots in Management Unit 3 and Management Unit 6 – Transmission Line ROW

The pollinator project includes approximately 3 acres (each site is just under 1 acre) and each will be hand seeded (broadcast spray) with the mix as outlined below.

Pollinator Mix				
Blue Wild Rye	4	19.42%	55.83%	= Grasses
Meadow Barley	3	14.56%		
Hairgrass slender	0.5	2.43%		
ladino clover	3	14.56%	44.17%	= forbs
small burnett	3	14.56%		
blackeyed susan	1	4.85%		
purple coneflower	0.75	3.64%		
lupin river	0.75	3.64%		
western yarrow	0.1	0.49%		
nootka rose	0.25	1.21%		
camas large	0.25	1.21%		
mountain brome	4	19.42%		
lbs/acre	20.6		100.00%	
cost / lb	\$ 16.71			
cost / acre	\$ 344.14			
3.5 acres	\$1,204.50			
Lbs Needed	72.1			
Total Lbs Ordered	264.10			
Shipping	\$ 60.00			
Total Cost	\$ 3,562.74			



Agenda items for November 13, 2019

- Review October 9, 2019 Meeting Notes
- Land Acquisition Update (**Confidential**)
- Study/Work Product Updates

Next Scheduled Meeting

November 13, 2019

Location: Conference Call

Attachments:

- October 9, 2019 Meeting Agenda

Adjourn 2:30pm

