

FINAL Meeting Notes
Lewis River License Implementation
Terrestrial Coordination Committee (TCC) Meeting
October 8, 2008
Ariel, WA

TCC Participants Present: (8)

Kendel Emmerson, PacifiCorp Energy
 David Geroux, WDFW
 LouEllyn Jones, USFWS
 Kimberly McCune, PacifiCorp Energy
 Todd Olson, PacifiCorp Energy
 Kirk Naylor, PacifiCorp Energy
 Bob Nelson, RMEF
 Nathan Reynolds, Cowlitz Indian Tribe

Calendar:

November 12, 2008	TCC Meeting	Merwin Hydro Facility
November 13, 2008	ACC Meeting	Merwin Hydro Facility

Assignments from October 8th Meeting:	Status
Emmerson: Add language in the Public Access Management Chapter regarding annual maintenance for those areas discovered as motorized vehicle use trails, closure of those areas and addition to the inventory.	Complete – 11/12/08
Emmerson: Add a definition of “trails” to the Public Access Management Chapter to address the concerns of Jim Eychaner, (Washington Recreation and Conservation Office) in accordance with his email dated October 1, 2008	Complete – 11/12/08

Assignments from September 10th Meeting:	Status
TCC: Provide a formal response from each TCC participants relating to their interpretation of the SA provision 10.8.2.3, specific to the text, “any funds derived” on or before September 24, 2008 and submit via email to the TCC.	Received comment from WDFW – 9/26/08 (see Attachment B)
Geroux: Naylor asked the TCC if they object to combining the Merwin WHMP into the annual Lewis River WHMP report that will be submitted to the TCC in Spring 2009. David Geroux (WDFW) will confirm with Curt Leigh (WDFW) and will advise.	WDFW confirmed that this is acceptable – 10/8/08

Assignments from January 9th Meeting:	Status
Naylor/Emmerson: Incorporate the following into the Forest Management chapter: WHMP lands that are within the SOSEA should have greater spotted owl protection than what is provided in Forest Practices Act and timber management actions should increase or improve spotted owl habitat in the SOSEA.	Complete – 11/12/08

Assignments from September 12, 2007 Meeting:	Status
Naylor/Emmerson: Incorporate the following text into the Forest Management chapter of the WHMP, “ <i>Prior to any harvest, the areas will be evaluated (ground truth) to determine whether or not the area qualifies as NSO habitat.</i> ”	Complete – 11/12/08

Parking lot items from June 11, 2008 Meeting:	Status
Review and discussion of occupancy and productivity of Wood Duck Nest Box and Kestrel Nest Box Program. Should this program be discontinued?	

Parking lot items from February 10, 2006 Meeting:	Status
PacifiCorp Wildlife Habitat Management Plan (WHMP) Budget (annual)	
Conservation Agreement – what is wanted?	Ongoing – 4/28/06

Review of Agenda and Finalize Meeting Notes

Kirk Naylor (PacifiCorp Energy) called the meeting to order at 9:05am. Naylor conducted a review of the agenda for the day and requested if the TCC had any additions to the agenda. Kendel Emmerson (PacifiCorp Energy) requested the addition of Osprey/Transmission tower discussion. In addition, Naylor noted that the Forestry Chapter discussion will be postponed to the November 2008 TCC meeting. The TCC attendees agreed to the requested changes.

Naylor reviewed the TCC Draft September 10, 2008 meeting notes and the meeting assignments with the TCC attendees and asked for any comments and/or additional changes. No changes were requested. The meeting notes were approved at 9:15am.

Riparian Management Chapter Review and Discussion of WDFW Comments

Emmerson discussed the comments provided by WDFW on September 12, 2008 ([Attachment A](#)), to address concern regarding enhancement of riparian areas, increase in hydrophytic shrubs in riparian areas. She referenced TCC meeting notes dated December 2, 2005, page 4 ([Attachment B](#)) which states,

“3.3.4 Riparian Habitat Goals & Objectives

The TCC have agreed to eliminate Objective a in its entirety. The following text will be stricken:

Objective a: Select and manage riparian deciduous areas at Merwin to increase the cover of hydrophytic shrub species by at least an addition 5% (as determined by the line intercept method) by TY17 to improve habitat for mink and yellow warbler”.

David Geroux (WDFW) agreed with the TCC’s interpretation that WDFW’s request to increase hydrophytic shrub conflicts with the TCC’s earlier decision and it would be counter productive for WDFW to go against this decision. Naylor stated that the TCC will find that they will continue to see an increase in shrub species which will address some WDFW concerns regarding increased shrub cover and increased diversity in riparian zones due to rehabilitation of some riparian areas.

Lewis River License Update

Olson informed the TCC attendees that PacifiCorp received formal notice from the Federal Energy Regulatory Commission (FERC) stating that they are in receipt of the Utilities Request for Rehearing. In mid-September PacifiCorp requested a stay regarding the submittal of revised Exhibit G drawings which were under consideration of rehearing. FERC approved the stay until February 27, 2009.

Introduce New Wildlife Habitat Management Plan (WHMP) Chapters

- Public Access Chapter Discussion

<http://www.pacificorp.com/Article/Article79878.html>

Emmerson provided a cursory review of the Public Access Management Chapter to include the introduction, goals and objectives and public access management areas. The management areas include all current and newly acquired WHMP lands. In addition, Emmerson reviewed three trails which provide non-motorized public access to WHMP Lands:

- Cresap Bay Campground Loop Trail
- Marble Creek Trail
- Saddle Dam – Speelyai Canal Equestrian Trail*

*The TCC attendees expressed that they remain concerned about equestrian use through Saddle Dam Farm.

Emmerson also provided a review of initial road evaluations, road closure barriers to ensure effectiveness, trail evaluation and inspections, recreation management to include the expansion of existing trails and development of new recreation facilities and trails. She also reviewed the strategy for managing dispersed shoreline recreation sites, controlling public access and reducing public access and reducing disruption to wildlife, closing roads, controlling unauthorized motorized vehicle use, road construction and visual screening, if topography and vegetation are inadequate.

Emmerson noted that new language will be added regarding annual maintenance for those areas discovered as motorized vehicle use trails, closure of those areas and addition to the inventory.

Emmerson will also add a definition of “trails” to address the concerns of Jim Eychaner, (Washington Recreation and Conservation Office) in accordance with an email dated October 1, 2008 ([Attachment C](#)).

TCC comments are due on or before Friday, October 31, 2008.

- Monitoring Chapter Discussion

<http://www.pacificorp.com/Article/Article79878.html>

Emmerson provided a cursory review of the Monitoring Chapter to include the management goal and objectives which applies to all current and newly acquired WHMP lands. She discussed the

monitoring for each of the WHMP lands and plan wide goals and the Habitat Evaluation Procedure (HEP) in year 17. Emmerson also expressed that in the year 2025 the HEP will be repeated on all WHMP lands to measure any changes in habitat values compared with the baseline HEP data, and at that time modifications, if any, will be made to the Standard and Guidelines Goals and Objectives and revision of the WHMP.

TCC comments are due on or before Monday, October 20, 2008.

Olson informed the TCC participants that in order to meet the FERC WHMP submittal deadline of December 26, 2008, PacifiCorp will submit a final review draft to the TCC of all WHMP chapters in early November, conduct a conference call with the TCC in late November, then add any changes in early December. PacifiCorp will also submit a consultation record, to include historical meeting notes and written comments as part of the FERC submittal.

Lewis River Osprey/Transmission Tower Discussion

Emmerson provided a map (**Attachment D**) illustrating the location of osprey nests near the Merwin powerhouse on transmission towers 1 & 2, suggested location for creating snags, and recommendation for an osprey pole location.

Emmerson informed the TCC that transmission towers 1 & 2 each have an active osprey nest that is in the middle of the Merwin Upstream Fish Collection Facility construction site, which is a project that is required to meet license obligations for fish passage. The project is scheduled to begin in 2010 and will require 2 years of continued construction. To avoid disturbing the ospreys during construction, PacifiCorp is going to try to relocate the nests to a distance greater than 660 feet from the construction site by removing the entire nests from the towers and creating two to three snags in the mature conifer forest area across from the Merwin Hatchery boat launch area by the end of the year. In addition, a pole will be erected, as illustrated in the attached map. The pole will need a shoreline permit, which PacifiCorp may not be able to obtain prior to the 2009 nesting season; however, the snags will be created in an old growth area prior to the nesting season.

The primary interest of PacifiCorp is to perform due diligence to avoid disturbing the nesting ospreys during construction. However because there are nine identical transmission towers with multiple places to nest and the ospreys have a high tenacity for these sites, the ospreys may continue to nest on the towers. In which case, PacifiCorp would have met best management practices and construction would continue as scheduled

By July 2009, PacifiCorp will know if the osprey have relocated their nests or continue to nest on the towers and the TCC will be notified. Emmerson informed the TCC attendees that every attempt will be made to erect the pole by April 1, 2009, permit dependent.

Review and Discussion of Land Interests

Naylor provided an update of interests in certain lands, however, this discussion is considered confidential and proprietary and not for public viewing.

Next Meeting's Agenda

- Review of 10/8/08 Meeting Notes
- License Update
- WHMP Chapter Review (Public Access, Monitoring, Forestry)
- Cowlitz PUD WHMP Budget Comments
-

Public Comment Opportunity

No public comment was provided.

Meeting adjourned at 11:00 a.m.

Next Scheduled Meetings

November 12, 2008	December 10, 2008
Merwin Hydro Facility	USFWS
Ariel, WA	Lacey, WA
9:00am – 3:00pm	9:00am – 3:00pm

Handouts

1. Agenda
2. Draft meeting notes from 9/10/08
3. **Attachment A** – WDFW comments on PacifiCorp Riparian Wildlife Habitat Management Plan, dated September 12, 2008
4. **Attachment B** – TCC Meeting Notes, dated December 2, 2005
5. **Attachment C** – Jim Eychaner, Washington Recreation and Conservation Office email dated October 1, 2008
6. **Attachment D** – Lewis River Osprey Map/Transmission Tower, as provided by PacifiCorp



**State of Washington
DEPARTMENT OF FISH AND WILDLIFE**

**Mailing Address: 600 Capitol Way North · Olympia, WA 98501-1091 · (360) 902-2200, TDD (360) 902-2207
Main Office Location: Natural Resources Building · 1111 Washington Street SE · Olympia, WA**

September 12th, 2008

Mr. Kirk Naylor
Environmental Supervisor
PacifiCorp Energy
825 NE Multnomah, Suite 1500
Portland, Oregon 97232

RE: WDFW comments on PacifiCorp Riparian Wildlife Habitat Management Plan

The Washington Department of Fish and Wildlife (WDFW) appreciates the opportunity to comment on the Riparian Wildlife Habitat Management Plan (WHMP) that PacifiCorp submitted on August, 11 2008. WDFW looks forward to working with PacifiCorp in further refining the WHMP and in assisting with implementation of that plan.

After reviewing the WHMP, WDFW has some comments and concerns on some of the sections. They are addressed by topic and section in the following letter. Our goal is to expand upon the working relationship we have with PacifiCorp and to assist in the protection and enhancement of the resources associated with the Lewis River Basin.

WDFW's primary concern with the Riparian WHMP involves section X.5 Management Actions. Under this section, there are currently three actions listed: establish buffers, snag management, and restoration. WDFW believes that these actions are important and should be addressed when managing riparian areas on WHMP lands. However, this list did not include enhancement, which was specifically referred to in the Standards and Guidelines document under Section 3.3.4: Riparian Habitat Goals and Objectives, which states:

Goal: Protect, maintain, and/or enhance riparian areas to include a diversity of native plant species and vegetation structures to benefit wildlife species that use riparian habitats.

Opportunities to enhance and improve plant diversity and structure in WHMP Riparian habitats, specifically increasing the coverage of hydrophytic shrubs, were discussed in several sections of the Terrestrial Resource Studies (TER). In TER 2, page 2-41 bullet 6, and then again in TER 9, pages 7, 35, 39, and 44, the lack of shrub cover in a majority of the riparian areas is noted. The HEP also assumed there would be an effort to enhance and identify the lack of hydrophytic shrubs, particularly in the Merwin and Swift canal areas. TER 2-41 stated,

"Planting would increase hydrophytic shrub cover by 5 percent by TY15".

Mr. Kirk Naylor
September 12, 2008
Page 2

These sections all refer to the need for an increase in hydrophytic shrubs. We encourage the inclusion of measures to enhance these areas and increase shrub cover to provide browse, and forage for a variety of species. WDFW believes that the development of a specific plan to address this concern would respond to the HSI prediction as discussed in the TERs, and in the goal set forth in the Standards and Guidelines document. Other potential riparian management measures should also be available to allow the TCC to enhance plant diversity and structure in these unique habitats.

The creation of snags would significantly increase the habitat value for these areas by creating openings in the canopy to allow shrub species to volunteer in the newly opened areas. Active snag creation could also create canopy diversity, large woody debris recruitment for adjacent water bodies, create woody debris in the riparian zone, and aid in the establishment of large diameter trees. These characteristics are considered vital to a robust riparian zone, according to the Department of Natural Resources (DNR) Riparian Forest Restoration Document section of the Habitat Conservation Plan (Bigley, R.E. and F.U. Deisenhofer 2006).

Another strategy discussed in the DNR document is selective stand thinning. Felling and leaving select trees in riparian zones would also open the canopy to allow for shrub recruitment, create woody debris, and produce a diverse stand composition. Thinning would also help in establishing “ranges of tree diameters” (Bigley, 2006, Page 8, paragraph 2), which DNR describes as a “long term target” for riparian habitat management (Bigley, 2006, Page 8, paragraph 2). This action would also create large woody debris in the streams themselves, which is a crucial habitat component for salmonids, particularly in the juvenile stage. Thinning targets and strategies should be available as an option for potential riparian enhancement actions in the annual plan submitted by PacifiCorp for TCC review.

WDFW looks forward to further discussing this draft management plan with PacifiCorp and the rest of the TCC at future meetings. The enhancement and protection of riparian habitats on PacifiCorp lands is a shared goal that WDFW looks forward to assisting throughout the life of the license. Thank you for your continued cooperation and consideration with the creation of these management plans. If you have any questions or concerns, please feel free to contact me at the information provided below.

David Geroux
Department of Fish and Wildlife
Habitat Biologist
(360) 902 2539
geroudcg@dfw.wa.gov
600 Capitol Way N
Olympia WA 98501
Mail stop: 4-3143

Mr. Kirk Naylor
September 12, 2008
Page 3

References

Bigley, R.E. and F.U. Deisenhofer. 2006 Implementation Procedures for the Habitat Conservation Plan Riparian Forest Restoration Strategy. DNR Scientific Support Section, Olympia, Washington.

FINAL Meeting Notes
Lewis River License Implementation
Terrestrial Coordination Committee (TCC) Meeting
December 2, 2005
Ariel, WA

TCC Participants Present: (14)

Brock Applegate, WDFW
 Monte Garrett, PacifiCorp
 Eric Holman, WDFW
 Mike Iyall, Cowlitz Indian Tribe
 LouEllyn Jones, USFW
 Curt Leigh, WDFW
 Diana MacDonald, Cowlitz PUD (via teleconference 9:00am – 12:00pm)
 Kimberly McCune, PacifiCorp
 Colleen McShane, EDAW, Inc.
 Bob Nelson, Rocky Mountain Elk Foundation
 Tom Macy, RMEF
 Kirk Naylor, PacifiCorp
 Todd Olson, PacifiCorp
 Mitch Wainwright, US Forest Service

Calendar:

December 2, 2005	TCC Meeting	Lacey, WA
December 8, 2005	ACC Meeting	Vancouver, WA
December 12, 2005	TCC Meeting	Longview, WA

Assignments from December 2nd Meeting:	
Naylor – Provide McShane confirmation of names in line three of the first paragraph of ROW Habitats in the Region (3.7.2). <i>...the Merwin-Yale, Swift No. 2 to BPA TAP, Speelyai, Cougar, and Lake lines.</i>	Complete – 12/21/05
McShane – Add additional language in Chapter 2 which builds in flexibility for the TCC.	Complete – 12/21/05
McShane – Add a “place-holder” for revising the standards and guidelines goals & objectives in Chapter 4 for discussion at the next meeting	Complete – 12/5/05
Naylor - Modify text on page 39, Section 3.9.2 and page 9, Section 2.3.3 regarding Unit Management Plans with Colleen’s assistance, if needed, and provide to TCC for review and approval.	Complete – 12/21/05

Issues to revisit from November 9th Meeting:	
Forestland snags and retention trees.	Complete 12/2/05
What can and can’t be done in riparian buffers?	TCC agreed that no additional objective was required to address this issue

Objective a of 3.3.4, Riparian Habitat Goals and Objectives. TCC may make additional changes.	TCC chose to delete Objective a on 12/2/05
---	--

WHMP Further Consideration	
>30 acre harvest area.	Agenda item 1/11/06
Disperse harvest areas retaining hiding cover adjacent to all newly harvest areas.	Agenda item 1/11/06
Applegate's (WDFW) forest management strategies.	Agenda item 1/11/06

Assignments from November 9th Meeting:	Status:
TCC to determine when to discuss management plans at the unit level.	Pending
McShane - Add appropriate text to 3.1.2 relating to mature cover type acreage and present to the TCC for review and approval at the next meeting.	Complete - 11/18/05
McShane - Modify Objective e of Wetland Habitat Goals & Objectives to read largely similar to riparian buffer text.	Complete - 11/18/05
McShane - Write additional Objective (Objective e) regarding Reservoir Buffer and present to the TCC for review and approval.	Complete - 11/18/05

Opening, Review of Agenda, Finalize Meeting Notes

Monte Garrett (PacifiCorp) called the meeting to order at 9:15am. The purpose of the meeting is to continue the review of the draft WHMP Standards and Guidelines document, beginning with section 3.3.1 Riparian Habitat.

Garrett reviewed the Agenda with the TCC and asked if any changes or additional Agenda items. LouEllyn Jones (USFW) requested an addition relating to a land acquisition opportunity. The TCC agreed to add Jones' request to the Agenda after the Meeting Notes review. In addition, the RMEF land acquisition discussion will also be moved from its later time slot to immediately after review of the Draft Meeting Notes.

Eric Holman WDFW requested the addition of discussion regarding his concerns about big game entrapment into Cowlitz PUDs new power canal. The TCC agreed to add this topic immediately after the land acquisition discussions.

Garrett reviewed the Draft 11/9/05 Meeting Notes with the TCC. The Meeting Notes were approved at 9:30am with only additions of completion dates in the Assignments section on pages 1 and 2.

RMEF Summary of Activities for Land Acquisition

Garrett provided an update to the TCC of potential land acquisition opportunities. This discussion is confidential and proprietary and not for public viewing.

USFW Summary of Land Acquisition opportunity

Jones provided a summary to the TCC of a potential land acquisition opportunity. This discussion is confidential and proprietary and not for public viewing.

WDFW Concerns regarding Cowlitz PUD construction of new power canal

Holman expressed to the TCC his concern with the construction/fencing of the new power canal and requested additional data from Cowlitz PUD that there was sufficient consideration given to elk escapement. Diana Gritten-MacDonald (Cowlitz PUD) communicated to the TCC that the maintenance road (she believes it is concrete) is constructed at a low angle down into the canal. The purpose of the road is for maintenance and as an elk escape ramp. If elk get into the area above the fence the access road allows them to get out. Holman said that a diagram of the subject area so the TCC can view the fencing and the road would be very helpful to get their minds around it.

Gritten-MacDonald will discuss the construction details further with their engineers to address Eric's concerns and get back to him at the next TCC meeting on 12/12/05. Gritten-MacDonald will also provide a suitable diagram (plan view and/or picture for the TCC review). She also told the TCC that she will be at the site the week of 12/5/05 at which time she will take pictures while she is there.

Break <10:15am>

Reconvene <10:30am>

Continue review of Riparian/Wetland Buffer

3.3.1 Riparian Habitat (Background Information)

Colleen McShane (EDAW) provided a quick review of WHMP discussions for those not in attendance on 11/9/05.

Modify Table 3-6 (Footnote 1) to read as follows:

- 1 Distance is defined as the slope distance from the high water mark.*

3.2.4 Wetland Habitat Goals & Objectives

Modify Objective e as follows:

Objective e: Identify and establish buffers to maintain and protect wetland habitat and functions using the following guidelines as a minimum when planning forest management activities: (1) 150 ft as measured from the edge of the hydric vegetation, or height of one site potential tree, whichever is greater, for wetlands ≥ 1 acres; and (2) 100 ft as measured from the edge of the hydric vegetation, or height of one site potential tree, whichever is greater, for wetlands < 1 acres. Buffer widths are measured horizontally from the edge of the hydric vegetation. Reduced buffer widths and other management activities would only be allowed for the purpose of meeting specific wildlife habitat objectives.

3.3.4 Riparian Habitat Goals & Objectives

The TCC have agreed to eliminate Objective a in its entirety. The following text will be stricken:

Objective a: Select and manage riparian deciduous areas at Merwin to increase the cover of hydrophytic shrub species by at least an addition 5% (as determined by the line intercept method) by TY17 to improve habitat for mink and yellow warbler.

Modify Objective c as follows:

Objective c: Identify and establish buffers to maintain and protect riparian habitat and functions, using the following guidelines as a minimum when planning forest management activities: (1) 300 ft, or height of 2 site potential trees, whichever is greater for perennial fish-bearing streams; (2) 150 ft, or height of 1 site potential tree, whichever is greater for perennial streams; and (3) 100 ft, or height of 1 site potential tree, whichever is greater for intermittent streams. Buffer widths are measured horizontally. Reduced buffer widths and other management activities would only be allowed for the purpose of meeting specific wildlife habitat objectives.

Objective d approved without changes.

Brock Applegate (WDFW) recommended the addition of another Objective, which the TCC will review at the next meeting on 12/12/05. Objective e currently reads as follows:

Objective e: Identify physically and/or ecologically damaged riparian sites and prepare restoration plans within 5 years of WHMP implementation or land acquisition. Restoration plans should incorporate measures to meet applicable objectives for invasive species and public access management (see Section 4.1.4 and 4.3.4).

Note: McShane and Applegate may massage this text further and present to the TCC for review and approval at the next meeting on 12/12/05.

3.4.2 Shrubland Habitat on the WHMP Lands

Modify last sentence in the last paragraph on pg 27 to read as follows: *Grass and forbs in many shrub stands are relatively limited but shrublands may provide browse and some hiding and thermal cover.*

3.4.3 Shrubland Habitat Goals and Objectives

Add the following text after Analysis Species:

Other Species: *Black-tailed deer, migratory birds, and raptors*

Modify Objective a as follows:

Objective a: Within 5 years of WHMP implementation, evaluate all cover typed shrub stands to determine tree composition and size classes, and shrub size and structural characteristics. Where appropriate, manage to prevent conversion to forest and maintain/improve mixture of shrub ages and sizes; re-evaluate stands every 15 years.

Modify Objective b as follows:

Objective b: Within 5 years of WHMP implementation, evaluate the designated shrublands identified in the Merwin SOP (PacifiCorp 1998) and determine if and how these areas should continue to be managed as shrublands in the future. Within 8 years, revise management actions where necessary.

Modify Objective c as follows:

Objective c: Maintain existing snags and large perch trees, while minimizing excessive shading, in shrublands over the license periods to benefit raptors. When possible, maintain existing large red-cedar trees.

3.5.4 Farmland/Idle Field/Meadow Goals and Objectives

Modify Objective a to read as follows:

Objective a: Intensively manage select meadows, farm fields at Saddle Dam Farm, and other designated lands to provide quality forage for wintering elk (November 1-April 30) over the life of the licenses.

Objective b & c approved without changes.

Modify Objective b to read as follows:

Objective d: Maintain fruit or soft mast bearing species in shrub patches or hedgerows over the life of the licenses.

3.6.4 Orchards Goals and Objectives

Modify “Other Species” as follows:

Other Species: Black bears, black-tailed deer, migratory and upland birds

Objective a approved without changes.

The TCC have agreed to eliminate Objective b in its entirety. The following text will be stricken:

Objective b: Protect young orchard trees from big game damage while allowing access by game birds and smaller wildlife for the life of the licenses.

Objective c approved without changes.

Lunch <12:00pm>

Reconvene <12:45pm>

WHMP Discussion – (cont’d)

3.7.2 ROW Habitats in the Region

Naylor will provide McShane confirmation of names in line three of the first paragraph.

...the Merwin-Yale, Swift No. 2 to BPA TAP, Speelyai, Cougar, and Lake lines {KN to check names}.

Curt Leigh (WDFW) requested further discussion relating to the following text in the first paragraph of Section 3.7.2:

Cowlitz PUDs distribution lines share some common corridors with PacifiCorp's Speelyai line but are not subject to the SA.

However, Gritten-MacDonald needs to be a party to this discussion, so the TCC agreed to revisit the discussion at the next meeting on 12/12/05.

3.7.4 ROW Goals and Objectives

The Goal was approved without changes.

The TCC have agreed to eliminate Objective a in its entirety. The following text will be stricken:

Continue to manage existing big game forage areas of the transmission line ROWs in the MWHMA over the life of the licenses.

Modify Objective b to read as follows:

Objective b: Manage and develop patches of desirable shrubs in the transmission line ROWs and along ROW edges to break up line-of-sight distances and provide screening/hiding cover for elk and multi-layered habitat structure for birds for the license periods. Evaluate alternative techniques where needed.

Modify Objective c to read as follows:

Objective c: Continue to manage existing deer and elk foraging areas on ROW in the MWHMA. Identify and manage other suitable areas within PacifiCorp's transmission line ROWs to provide enhanced forage for elk and deer. Suitable areas should be identified within 5 years of WHMP implementation, with management activities to follow.

Modify Objective d to read as follows:

Objective d: Identify and provide screening cover for deer and elk, where needed, along public roads that cross transmission line ROWs.

Modify Objective e to read as follows:

Objective e: Schedule mowing in transmission line ROW between August 15 and September 15 to minimize impacts to ground-nesting birds and complete prior to fall rains.

3.8 Unique Habitats on WHMP Lands

Modify Table 3-8 to add the following under the heading "Unique Habitat Type":

Rock Talus/Lava Flow

3.8.4 Unique Area/Habitat Goals and Objectives

After Analysis Species add the following new text:

Other Species: Other species associated with unique areas (i.e., migratory birds)

Modify Objective a to read as follows:

Objective a: Protect and maintain existing oak stands and prevent encroachment of conifers and invasive plant species over the life of the licenses.

Objective b approved without changes.

Modify Objective c to read as follows:

Objective c: Maintain a record of sensitive sites and unique habitats, as they are identified, through implementation of the WHMP.

The TCC have agreed to eliminate Objective d in its entirety. The following text will be stricken:

Protect talus slopes and other areas known to support populations of Larch Mountain salamanders and VanDyke's salamanders over the life of the licenses.

Objective e approved without changes.

3.9.1 Forestlands – (Background Information)

General discussion regarding the use of the term Forestlands. The TCC agreed to table discussion for now and revisit at a later time.

3.9.4 Forestland Goals and Objectives

Modify Objective b to read as follows:

Objective b: Over the life of the licenses, maintain or create at least 8 snags (≥ 20 in. dbh), green retention trees (≥ 15 in. dbh) or wildlife reserve trees (≥ 15 in. dbh) per acre if available within the harvest area. Retain larger trees and snags representative of the harvest area. A different number of snags, retention, or reserve trees would be allowed only to meet specific wildlife objectives. To the extent possible, retain or create 4 logs/acre (≥ 24 in. dia and 50 ft long).

Break <2:13pm>

Reconvene <2:30pm>

WHMP Discussion – (cont'd)

3.9.1 Forestlands (Background Information)

The TCC chose to revisit the text in this paragraph and agreed to modify as follows:

Forestland is a general term for upland areas dominated by trees; it encompasses all forest types, structures, and age classes. In the Pacific Northwest, forestlands west of the Cascade crest are dominated by Douglas-fir. The composition, structure and habitat quality of forestlands for wildlife varies greatly as a consequence of forest succession, disturbance, plant community, and environmental factors (Spies and Franklin 1991). Forestlands are often distinguished by whether or not they are unmanaged or managed. Unmanaged forestlands are not harvested periodically and changes are the result of natural succession and environmental processes; managed forestlands are periodically affected by some type of harvest. For the WHMPs, managed forestlands are periodically subject to timber harvest for purposes of perpetuating enhanced forage for deer and elk, as well as other species that benefit from a variety of successional stages.

3.9.2 Forestland in the Region

Naylor to modify text on page 39 regarding Unit Management Plans with Colleens assistance, if needed, and provide to TCC for review and approval.

2006 Meeting Schedule

The TCC agreed to meet the second Wednesday of every month in 2006. Changes will be made as needed and as agreed to by the TCC.

New Topics/Issues

None

Next Meeting's Agenda

WHMP Discussion

- Final review of Chapter 4
- Final review of Chapter 1
- Initial/final review of Chapter 2
- Final check/agreement on revision still in track changes in Section 3.1
- Review of wording for new objective e for Riparian

Cowlitz Distribution Line Discussion

New Power Canal Concerns – Cowlitz PUD

Meeting adjourned at 3:00 pm

Next Scheduled Meetings

December 12, 2005

Cowlitz PUD
961 12th Avenue
Longview, WA 98632

January 09, 2006

Merwin Hydro Facility
105 Merwin Village Court
Ariel, WA 98603

Handouts

1. Final Meeting Agenda
2. Draft WHMP Goals & Objectives (11-09-05 version for 12-02-05)
3. Draft meeting notes from 11/09/05

McCune, Kimberly

From: McCune, Kimberly
Sent: Thursday, October 02, 2008 8:35 AM
To: 'Eychaner, Jim (RCO)'
Cc: Emmerson, Kendel; Naylor, Kirk
Subject: RE: WHMP Draft Public Access Management Chapter, 30-day ReviewVersion
Sensitivity: Confidential

Thank you, Jim.

Kimberly L. McCune - PacifiCorp Energy
Hydro Resources Project Coordinator
Phone: 503-813-6078
Fax: 503-813-6633
kimberly.mccune@pacificorp.com

From: Eychaner, Jim (RCO) [mailto:Jim.Eychaner@rco.wa.gov]
Sent: Wednesday, October 01, 2008 4:57 PM
To: McCune, Kimberly
Subject: RE: WHMP Draft Public Access Management Chapter, 30-day ReviewVersion
Sensitivity: Confidential

Kimberly: I suggest a modest change on page 8.

Page 8**Recreation Development**

The Recreation Resource Management Plan requires the expansion of existing and development of new recreation facilities and trails. PacifiCorp biologists will review projects that are on or near Wildlife Habitat Management Plan lands in the design stage to assess the impacts to wildlife, determine compliancy with the Wildlife Habitat Management Plan goals and objectives, and provide management recommendations for reducing the impacts. Management recommendations will be site specific and will comply with the U.S Fish and Wildlife Service Biological Opinion, as well as other applicable state and Federal regulations (U.S Fish and Wildlife Service 2006). Recreation projects on Wildlife Habitat Management Plan lands should comply with the Wildlife Habitat Management Plan (e.g. buffers and seasonal restrictions). However, if a proposed project is unable to comply with the Wildlife Habitat Management Plan, then the Terrestrial Coordination Committee shall consult with the Recreation Committee to collaborate on potential ~~may determine other~~ alternatives to minimize wildlife impacts

Also, the footnotes on the inspection forms need a bit more specificity. I would not use the word "trail," instead I'd suggest "track" or a similar term implying informal use as opposed to purpose built. Jumping

from “few” to “many” around the number 3 is also a bit vague. One track of several hundred feet may indicate heavy use: you may wish to use descriptors (e.g., vegetation, ruts, and so on).

Thank you.

Jim Eychaner

From: McCune, Kimberly [mailto:Kimberly.McCune@PacifiCorp.com]
Sent: Tuesday, September 30, 2008 4:02 PM
To: Bob Nelson; Clifford Casseseka; Leigh, Curt (DFW); Darlene Johnson; Geroux, David (DFW); Diana MacDonald; Emmerson, Kendel; Holman, Eric (DFW); Eychaner, Jim (RCO); Jim Malinowski; Joanna Meninick (joannam@yakama.com); Joel Rupley; 'John Clapp'; Weinheimer, John (DFW); LouEllyn Jones; Mariah Stoll-Smith Reese (M.Reese@tds.net); Michelle Day; Mitch Wainwright; Nathan Reynolds; Naylor, Kirk; Olson, Todd; Paul Pearce (pearce@co.skamania.wa.us); Ray Crosswell (shedhunt@aol.com); Ruth Tracy; 'Ryan Lopossa'; Shannon Wills; HML LRN (Branz, Steve); Susan Rosebrough; Taylor Aalvik (taalvik@cowlitz.org)
Subject: RE: WHMP Draft Public Access Management Chapter, 30-day ReviewVersion
Sensitivity: Confidential

Attn: TCC Participants

Please be advised that the *Lewis River WHMP Draft Public Access Management Chapter, 30-day review version* is now available on the Lewis River website for your review and comment. I've provided the link below for your convenience:

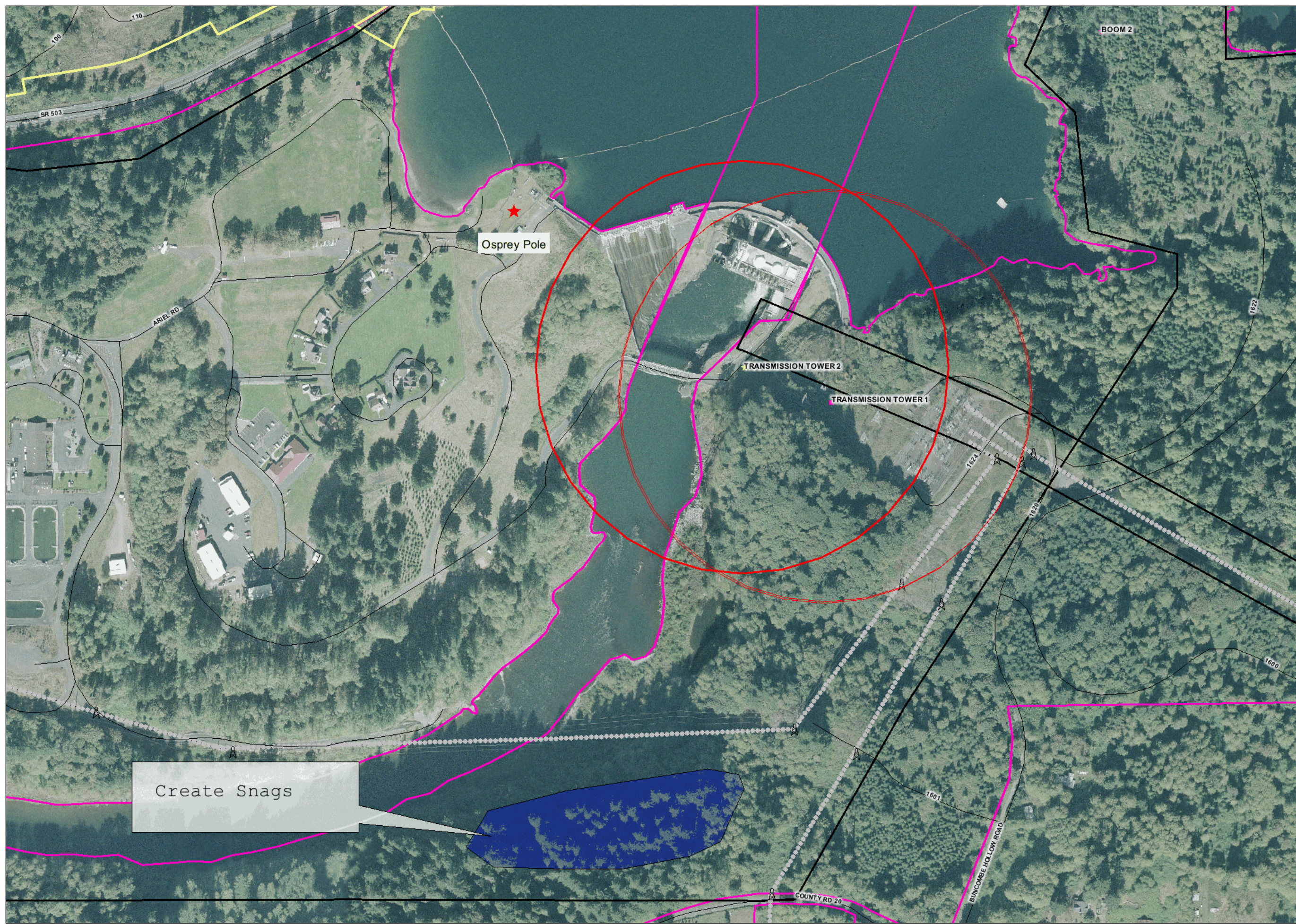
<http://www.pacificorp.com/Article/Article79878.html>

We would greatly appreciate receiving any comments and/or questions **on or before Friday, October 31, 2008** addressed to Kendel Emmerson at kendel.emmerson@pacificorp.com

Thank you.

*Kimberly L. McCune - PacifiCorp Energy
Hydro Resources Project Coordinator
Phone: 503-813-6078
Fax: 503-813-6633
kimberly.mccune@pacificorp.com*

Lewis River

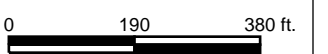


Legend

- Inactive Raptor Nest
 - OSPREY
 - BALD EAGLE
- Active Raptor Nest
 - OSPREY
 - BALD EAGLE
- PacifiCorp Transmission Pole
- Road
- PacifiCorp Transmission Line
- FERC Boundary
- Management Unit
- PacifiCorp Ownership



1:3,485



Data are collected from a variety of City, County, State, Federal and Private sources. PacifiCorp GIS makes no warranty as to the accuracy, reliability, or completeness of this data for individual or aggregate use. Maps and data from PowerMap are not to be released to nor put into any location that is accessible electronically or otherwise available to Market Affiliates.